



# Kent Academic Repository

Rivett, Skye, Bicknell, Jake E. and Davies, Zoe G. (2016) *Effect of reduced-impact logging on seedling recruitment in a neotropical forest*. *Forest Ecology and Management*, 367 . pp. 71-79. ISSN 0378-1127.

## Downloaded from

<https://kar.kent.ac.uk/54525/> The University of Kent's Academic Repository KAR

## The version of record is available from

<https://doi.org/10.1016/j.foreco.2016.02.022>

## This document version

Author's Accepted Manuscript

## DOI for this version

## Licence for this version

CC BY-NC-ND (Attribution-NonCommercial-NoDerivatives)

## Additional information

## Versions of research works

### Versions of Record

If this version is the version of record, it is the same as the published version available on the publisher's web site. Cite as the published version.

### Author Accepted Manuscripts

If this document is identified as the Author Accepted Manuscript it is the version after peer review but before type setting, copy editing or publisher branding. Cite as Surname, Initial. (Year) 'Title of article'. To be published in *Title of Journal* , Volume and issue numbers [peer-reviewed accepted version]. Available at: DOI or URL (Accessed: date).

## Enquiries

If you have questions about this document contact [ResearchSupport@kent.ac.uk](mailto:ResearchSupport@kent.ac.uk). Please include the URL of the record in KAR. If you believe that your, or a third party's rights have been compromised through this document please see our [Take Down policy](https://www.kent.ac.uk/guides/kar-the-kent-academic-repository#policies) (available from <https://www.kent.ac.uk/guides/kar-the-kent-academic-repository#policies>).

# **Effect of Reduced-Impact Logging on Seedling Recruitment in a Neotropical Forest**

Skye L. Rivett<sup>1</sup>, Jake E. Bicknell<sup>1\*</sup>, Zoe G. Davies<sup>1</sup>

<sup>1</sup> Durrell Institute of Conservation and Ecology (DICE), School of Anthropology and Conservation,  
University of Kent, Canterbury, CT2 7NR, UK

\*Corresponding Author: J. E. Bicknell

Present Address: Durrell Institute of Conservation and Ecology (DICE), School of Anthropology and  
Conservation, University of Kent, Canterbury, CT2 7NR, UK

Email: J.E.Bicknell@kent.ac.uk

## Abstract

1 Seedling growth and survival are critical for tropical rainforest regeneration. Alterations to natural  
2 disturbance regimes, such as those brought about by logging, have the potential to shift relative species  
3 abundances and the community composition of forests, resulting in population declines for  
4 commercially valuable species. Timber operations therefore need to minimise such changes if long-  
5 term sustainability is to be achieved within the industry. Reduced-impact logging (RIL) has been  
6 promoted widely as an alternative management strategy to conventional selective logging, as it  
7 employs practices that decrease the negative impacts of logging within forests. However, the long-  
8 term sustainability of RIL, including the influence it has on the regeneration of species targeted for  
9 timber extraction, is still uncertain. Here we undertake a comparative study in Iwokrama forest,  
10 Guyana, examining seedling densities of four commercially valuable and two pioneer tree species in  
11 unlogged, 1.5 years and 4.5 years postharvest forest plots to ascertain how seedling regeneration is  
12 effected by RIL. We find that RIL had either a neutral or positive impact on the density of seedlings  
13 of timber species when compared to unlogged forest, with pioneer species densities remaining  
14 unaffected. We conclude that the forestry practices associated with RIL have little effect on the natural  
15 regeneration rates of key commercially valuable tree species in logged neotropical forests.

16

17 Key words: Guyana, Regeneration, Forest disturbance, RIL, Sustainable forestry, Timber

18

19

20

21

22

23

24

## 25 **1. Introduction**

26 Logging rates throughout the world's tropical rainforests continue to increase (Arets 2005; FAO 2010;  
27 Gardner 2010) with approximately 30% of their areal extent designated for timber and non-timber  
28 product exploitation (FAO 2010). Indeed, over 40 million hectares are currently allocated to selective  
29 logging globally (Asner et al. 2009; Blaser et al. 2011). In tropical forests, seedling growth and survival  
30 are driven principally by small-scale disturbance dynamics of canopy gaps (Brokaw 1982; Hartshorn  
31 1978; ter Steege et al. 1994; Zagt 1997). When a tree falls, either naturally or through logging, a canopy  
32 gap is created of varying size. The resultant gap alters the microclimate (light, moisture, and  
33 temperature) of the immediate area, stimulating the growth of any seedlings already present (climax  
34 species) or triggering seed germination (pioneer and climax species) (Yamamoto 2000). Changes to  
35 natural disturbance regimes, such as those brought about by logging, can thus affect the growth,  
36 survival and reproduction rates of plant species (Asner et al. 2004; Boot 1996; Brokaw 1982; de Avila  
37 et al. 2015; Fenner 1985; Karsten et al. 2014; Rose 2000; ter Steege & Hammond 2000). Consequently,  
38 forest assemblage composition can alter over time, due to species-specific variation in re-establishment  
39 following logging (Asner et al. 2004; Karsten et al. 2014; ter Steege et al. 2002) and applied  
40 silvicultural practices (de Avila et al. 2015). Low disturbance levels tend to favour slower growing  
41 hardwood climax species, resulting in relatively stable forest ecosystems that characterise lowland  
42 tropical rainforests. As disturbance levels rise, faster growing, less dense pioneer species tend to  
43 dominate (Karsten et al. 2014; ter Steege & Hammond 2000). Therefore, the extent to which rainforest  
44 structure and composition are impacted by logging is highly dependent on the intensity of logging,  
45 harvest interval, and management practices implemented (Gardner 2010; Waide & Lugo 1992; Zagt  
46 1997).

47

48 Reduced-Impact Logging (RIL) was developed to provide a more sustainable alternative to  
49 conventional selective logging, whereby the detrimental effects inherent in many traditional forestry

50 operations are minimised (Pinard & Putz 1996; Putz et al. 2008). Although the forestry techniques  
51 used under RIL vary from country to country, the aim is to retain forest canopy integrity and species  
52 diversity (Edwards et al. 2011; Gibson et al. 2011; Putz et al. 2012), reduce land degradation (Bryan  
53 et al. 2010; Dykstra 2002; Dykstra & Heinrich 1992; Dykstra & Heinrich 1996; Jonkers 2002; Putz et  
54 al. 2008), and decrease the carbon emissions associated with collateral damage to surrounding  
55 vegetation and soil disturbance (Pinard & Putz 1996; Putz et al. 2008), while maintaining a sustained  
56 timber supply for future cutting cycles (Putz et al. 2000). Tree inventories are undertaken in order to  
57 plan the most efficient and least destructive extraction of logged timber and, in some operations,  
58 selected harvest trees have attached vines cut several months prior to removal. The trees are then felled  
59 using directional techniques in order to facilitate extraction and minimise stand damage, with logs  
60 removed using a skidder and winch.

61

62 In this study, we examine natural regeneration levels of commercially valuable tree species in a RIL  
63 logging operation in Guyana. Guyana's commercial timber species occur in isolated stands dominated  
64 by one or two species (Johnston & Gillman 1995). Harvesting operations are therefore selective by  
65 necessity with extraction rates averaging 2-3 trees/ha<sup>-1</sup> (Blaser et al. 2011; Jonkers 2002; van der Hout  
66 1999), although they can be as high as 20 trees/ha<sup>-1</sup> in some areas (Jonkers 2002). While the countries  
67 annual rate of 0.3% deforestation is relatively low compared with other tropical countries (FAO 2006),  
68 timber constitutes an important component of the national economy (Blaser et al. 2011; GFC 2002).  
69 As in many other tropical countries, Guyana's timber industry relies on natural regeneration  
70 (Hammond et al. 1996; van der Hout 1999), meaning that logging that has a detrimental impact on the  
71 natural regeneration of commercially important tree species will not be sustainable in the long-term.  
72 Historically, the timber industry in the country has centred on *Chlorocardium rodiei* (greenheart), but  
73 increased market demand has seen the number of species targeted by logging expand considerably in  
74 recent decades (Jonkers 2002).

75  
76 Presently, there is a paucity of research into the effects of RIL on natural seedling regeneration within  
77 the neotropics (Lobo et al. 2007; Rose 2000), with the majority of studies focusing on the application  
78 of silviculture (Dekker & de Graaf 2003; Forget et al. 2001; ter Steege et al. 1994), other forms of  
79 logging (Kuusipalo et al. 1996; Pinard et al. 1996), or seedling regeneration in the absence of logging  
80 disturbance (Baraloto & Goldberg 2004; Baraloto et al. 2005). Consequently, this paper fills an  
81 important gap in our understanding, thus contributing to the improvement of management practices  
82 within RIL forest stands and the long-term sustainable use of commercially important target species  
83 across their range (Arets 2005; Putz et al. 2000; van der Hout 2000).

84

## 85 **2. Material and Methods**

### 86 *2.1 Study area*

87 Iwokrama forest is located in central Guyana (Fig. 1.), covering an area of 371,000 ha<sup>-1</sup>. It was  
88 established in 1996 as a demonstration site to exemplify how tropical forest exploitation can be  
89 sustainable, with commercially viable logging being balanced with biodiversity conservation and local  
90 community needs (Watkins 2005). The climate is tropical, with an annual rainfall ~ 3700 mm across  
91 two rainy seasons (May-August and December-January). Temperatures range from a mean minimum  
92 of 22 °C overnight in July, up to a daytime maximum of 36 °C in October.

93

94 The study area (Fig.1) is characterised by low-lying terra firme tropical rainforest on nutrient poor  
95 soils. Dominant forest types include: (i) mixed *C. rodiei*, *Eschweilera spp.* and *Swartzia leiocalycina*  
96 forest; (ii) *Mora excelsa*, *Euterpe oleracea*, *Carapa guianensis* and *Pentaclethra macroloba* forest;  
97 and, (iii) mixed *C. rodiei*, *Catostemma fragrans*, and *Eperua falcata* forest.

98

99 RIL became operational in Iwokrama forest during 2007, with operations certified by the Forestry  
100 Stewardship Council (FSC). Sustainable harvest levels are calculated based on species growth rates  
101 combined with a 60-year polycyclic felling rotation. Logging intensity (calculated within a 100 m  
102 radius from the sampling sites) ranged from 0.6-11.1 (mean = 3.7, median = 3.2, S.D. = 2.6) trees/ha<sup>-1</sup>,  
103 with an average of 152 m/ha<sup>-1</sup> of skid trails throughout the logging concession (Bicknell et al. 2015).

104

## 105 2.2 Study design

106 A comparative study was undertaken examining seedling density for six species, in both unlogged and  
107 postharvest forest stands, to ascertain how RIL influences forest regeneration. Following Rose (2000),  
108 we sampled seedlings (defined as up to 150 cm tall) of the four primary timber species logged in the  
109 Guianas (Hammond et al. 1996; van der Hout 2000): *C. rodiei* (greenheart), *Dicorynia guianensis*  
110 (basralocus), *E. falcata* (soft wallaba), and *Goupia glabra* (kabukalli). In addition, we also assessed  
111 the densities of the two most common pioneer species, *Cecropia obtusifolia* and *Cecropia*  
112 *sciadophylla*, which are indicators of disturbance as they grow along forest edges and within canopy  
113 gaps (Alvarez-Buylla & Martinez-Ramos 1992). Seedlings were then assigned to one of three height  
114 classes (0-50, 50-100 and 100-150 cm).

115

116 The study was conducted in May and June 2012, within the *C. rodiei*, *Eschweilera spp.* and *S.*  
117 *leiocalycina* forest type which is predominant in the Iwokrama logging concession. Two postharvest  
118 temporal logging treatments (1.5 and 4.5 years after timber extraction) and unlogged (control) forest  
119 were sampled. Sample plots of 20 x 20 m were used to determine seedling densities; this size was large  
120 enough for accurate estimates of seedling densities, but not too large to preclude maximum replication  
121 of plots per treatment (Bullock 2006). In total, sixty plots were sampled, comprising 20 within each of  
122 three harvesting blocks (Fig. 1). The sampling areas had been divided into a 20 x 20 m grid for tree  
123 inventory purposes prior to logging. The intersections of the grid were used to assign plot localities,

124 using a random number generator to select coordinates. In logged treatments, the south-west corner of  
125 each plot was constrained to within a 50 m radius of a felled tree. This means that we inevitably  
126 sampled seedlings both within and on the edge of these gaps. In the unlogged forest, plots were  
127 similarly constrained to within a 50 m radius of inventoried trees allocated for felling, with many plots  
128 also falling within or adjacent to natural gaps. This was done to ensure a comparable adult community  
129 composition between the three treatments. Areas subject to much higher intensity impacts, such as  
130 skid trails, roads, mill sites and log landings (where vegetation is highly disturbed or removed), were  
131 excluded from sampling. This was so that the focus was on areas that will provide future timber yields,  
132 rather than sampling logging infrastructure which is likely to be cleared again during the next round  
133 of timber extraction and, thus, where commercially valuable species will not be able to grow to  
134 maturity between cutting cycles.

135

### 136 *2.3 Reproductive ecology of six species*

137 Whilst the specific reproductive and ecological traits of the species studied vary (summarised in Table  
138 1), pioneers tend to have small seeds, which are readily dispersed and grow rapidly in large gaps  
139 (Martinez-Ramos et al. 1989; Pons et al. 2005) during the first 1-5 years post germination (Baraloto et  
140 al. 2005). Larger seeded climax species targeted for timber harvesting can persist as seedlings for a  
141 long time (Forget 1989) within shaded environments, attaining maturity as and when light levels  
142 increase (Martinez-Ramos et al. 1989).

143

### 144 *2.4 Data analyses*

145 Seedling densities for each species were compared between unlogged and the two temporal logging  
146 treatments to determine the effect of RIL on regeneration rates. Seedling densities within the three  
147 height classes were also compared across treatments to determine the effects of logging on the  
148 recruitment and regeneration of seedlings of different ages. All data were  $\log_{10}$  transformed prior to



149 analyses, and non-parametric Kruskal-Wallis tests were employed to examine differences in densities  
150 between treatments. Mann-Whitney U tests were used to make post-hoc comparisons. All analyses  
151 were conducted in SPSS (IBM v. 19).

152

153 Additionally, community analyses were used to determine if seedling densities differed between  
154 treatments for all six species. This was conducted via non-metric multi-dimensional scaling (NMDS),  
155 coupled with analysis of similarity (ANOSIM). The NMDS, based on Bray-Curtis dissimilarity  
156 coefficients, was implemented in PC-ORD v.6.07 (McClune & Mefford 2011). Five hundred iterations  
157 and 250 runs of both real and randomised data were used to produce a final ordination of minimum  
158 stress and consisting of two axes. ANOSIM was computed from 999 permutations in R (R Core Team  
159 2013).

160

### 161 **3. Results**

162 In total, 13,771 seedlings of the six target species were sampled across the 60 plots. Of these, 69%  
163 were greenheart, 17% soft wallaba, 13% basralocus, and 0.5% kabukalli. The two pioneer *Cecropia*  
164 species combined comprised less than 0.5% of the total number of seedlings recorded. Greenheart had  
165 the highest seedling densities within both the treatment and control plots, followed by basralocus in  
166 unlogged forest, and soft wallaba in the 1.5 and 4.5 years postharvest plots. Both pioneer species were  
167 unrecorded in unlogged and 4.5 years postharvest plots (Fig. 2).

168

169 Plots occurring in the 4.5 years postharvest forest treatment contained the highest overall density of  
170 seedlings (42% of all seedlings), with unlogged forest (34%) and 1.5 years postharvest forest (24%)  
171 containing slightly lower densities (Table 3). Of the six species studied, overall densities of four  
172 species (greenheart, basralocus, and both *Cecropia* species) did not differ between the three types of  
173 plot (Table 2; Fig. 2). Significant increases in seedling densities of soft wallaba and kabukalli were

174 apparent across the 1.5 years and 4.5 years postharvest forest compared to unlogged forest (Fig. 2;  
175 Table 2).

176

177 Within height classes, the seedling densities of soft wallaba were consistently greater in 4.5 years  
178 postharvest forest compared to both unlogged and 1.5 years postharvest forest ( $p < 0.001$  in all  
179 comparisons). Greenheart and *Cecropia obtusifolia* seedling densities were significantly lower in the  
180 100–150 cm height class ( $p = 0.042$  and  $p = 0.045$  respectively), and kabukalli seedling densities  
181 were significantly higher in 0–50 cm class ( $p = 0.018$ ). All other species showed no significant  
182 differences within height classes across treatments ( $p > 0.05$  in all cases) (Tables 2 and 3; Fig. 3).

183

184 The NMDS ordination of community structure represented 62% of the dissimilarity between  
185 treatments and control (Fig. 4), and analysis of similarity indicated that significant differences were  
186 evident between the 4.5 year plots and all others (ANOSIM - unlogged versus 1.5 year:  $R = 0.02$ ,  $p =$   
187  $0.21$ ; unlogged versus 4.5 year:  $R = 0.26$ ,  $p < 0.01$ ; 1.5 year versus 4.5 year:  $R = 0.17$ ,  $p < 0.01$ ). This  
188 showed the community composition of the 4.5 year postharvest forest differed from both the 1.5 year  
189 postharvest and unlogged forest. However, there was no difference between the community  
190 composition of the 1.5 year postharvest plots and unlogged plots.

191

#### 192 **4. Discussion**

193 Species specific biological responses, including regeneration rates and the original density of target  
194 species, retention of mature trees for seed dispersal, logging intensity and time between cutting cycles  
195 (Baraloto et al. 2005; Polak 1992; Sist et al. 2003, ter Steege & Hammond 2000), are key  
196 considerations in determining the long-term sustainability of logging. A failure to integrate such basic  
197 ecological information into forest management planning can lead to declines in exploited species  
198 populations, alter community composition and threaten future timber yields (Hammond et al. 1996;

199 Shearman et al. 2012; Zimmerman & Kormos 2012). As RIL explicitly takes into account these factors,  
200 it is likely to have the least detrimental impact on commercially valuable timber species when  
201 compared with conventional selective logging (West et al. 2014).

202

203 Our findings suggest that disturbance arising from RIL operations may not have a lasting negative  
204 impact on seedling regeneration and, for some species, may even help to encourage establishment (ter  
205 Steege et al. 1994; Rose 2000; ter Steege et al. 2002; Putzel et al. 2011; Karsten et al. 2014). Of the  
206 species studied, soft wallaba showed the largest increase in seedling densities across the temporal  
207 logging treatments. It is likely that this species drove differences in overall assemblage composition  
208 between treatments. Previous research into the growth rate of soft wallaba after logging suggests that  
209 the relatively high abundance of seedlings found in our study could subsequently result in a greater  
210 abundance of soft wallaba over time, altering the forest assemblage and dynamics in the long-term  
211 (Herault et al. 2010). While this may be a desirable outcome for forest management if market demand  
212 for this species increases, soft wallaba is already one of the most widespread canopy species in the  
213 Guiana's (ter Steege & Zondervan 2000; ter Steege et al. 2013). As such, limiting gap size and  
214 minimising disturbance through RIL will be important in maintaining the current tree assemblage  
215 composition of the forest (Herault et al. 2010). Without such precautions, this species may outcompete  
216 other commercially valuable but less responsive timber species.

217

218 While RIL had no effect on the overall seedling densities of either greenheart or basralocus, greenheart  
219 seedling density was greater within the taller height classes following logging, which is probably a  
220 response to moderate increases in light levels (ter Steege et al. 1994). Basralocus is also known to be  
221 negatively affected by some forms of selective logging (Degen et al. 2006), although no changes to  
222 seedling densities for this species across the height classes were observed in this study. Our results

223 indicate, therefore, that disturbance levels following RIL operations remain sufficiently low enough to  
224 have little to no impact on the long-term persistence of these species.

225

226 Densities of kabukalli seedlings increased across the logged treatments compared with unlogged  
227 forest, indicating regeneration of this species was stimulated by logging disturbance. However,  
228 seedling numbers for this species were the lowest of the four timber species surveyed, paralleling more  
229 closely with regeneration responses of the two pioneer species, and consistent with the reported  
230 regeneration responses of other light preferring species in logged forests (Karsten et al. 2014; Putzel  
231 et al. 2011; Rose 2000). The outcome of our study implies that the regeneration potential of kabukalli  
232 may be constrained within RIL concessions to outside the extraction forest in areas where disturbance  
233 is highest, such as along skid trails, within log landings and mill sites, or where larger gaps open within  
234 the forest canopy.

235

236 Neither of the two pioneer species showed a difference in seedling densities between the temporal  
237 logging treatments. Recorded numbers of both *Cecropia* species were very low in 1.5 years forest,  
238 with none documented in unlogged or 4.5 years postharvest forest plots. This reflects the biology of  
239 *Cecropia* species where successful recruitment is restricted to gaps less than three years old and larger  
240 than 100 m<sup>2</sup> (Alvarez-Buylla & Martinez-Ramos 1992; Vazquez-Yanes & Smith 1982) on disturbed  
241 mineral soils (Lawton & Putz 1988), dropping off markedly as the canopy closes (Rose 2000). This  
242 suggests that structural and soil disturbance within the standing forest area may have been kept to a  
243 minimum. However, as skid trails and other logging infrastructure constitute the greatest damage  
244 caused by RIL (Asner et al. 2004), additional research within the Guiana's is warranted to determine  
245 the full impact of logging on commercially valuable species (Karsten et al. 2014).

246

247 Overall our work demonstrates that disturbance levels following RIL in Iwokrama forest, within the  
248 vicinity of logged gaps, is minimal, with regeneration rates of four commercially harvested timber  
249 species either unchanged or increasing after logging. As none of the timber species included in this  
250 study showed a reduction in density postharvest, it is likely that RIL will allow effective natural  
251 regeneration to occur without the need for further silvicultural intervention (Putz et al. 2008).  
252 Furthermore, recent research has shown that the community composition of important seed dispersing  
253 animals remain relatively unaltered by RIL (e.g. Bicknell & Peres 2010; Bicknell et al. 2014; Bicknell  
254 et al. 2015), and thus the important role they play in forest regeneration is likely to be maintained.

255

## 256 **5. Conclusion**

257 Though arguments remain against the sustainability of logging across the tropics (Shearman et al.  
258 2012; Zimmerman & Kormos 2012) the timber industry will undoubtedly persist into the future. As  
259 lowland rainforests in the Neotropics, including Guyana, contain a large number of tree species with  
260 highly restricted distributions (Gentry 1992), it is crucial that logging has the least detrimental impact  
261 possible on the overall integrity of forest ecosystems and exploited species populations. Adjusting  
262 harvesting practices to ensure the effective natural regeneration of commercially valuable species is  
263 an important step in safeguarding the long-term viability of the industry. The results from this study  
264 indicate that RIL may provide a sustainable alternative to other forms of logging, and efforts should  
265 be made to implement it more widely to maintain the ecological and economic value of rainforests  
266 indefinitely.

267

## 268 **Acknowledgments**

269 Thanks to R. Thomas, I. Bovolo and V. Welch from Iwokrama International Centre for in-country  
270 research assistance, K. Rodney for supplying forestry information, and the Iwokrama rangers for help

271 in the field. We are grateful to the Guyana Environmental Protection Agency for granting research  
272 permission.

273

## 274 **References**

275 Alvarez-Buylla, E. R., and M. Martinez-Ramos. 1992. Demography and allometry of *Cecropia*  
276 *obtusifolia*, a neotropical pioneer tree – an evaluation of the climax-pioneer paradigm for tropical rain  
277 forests. *Journal of Ecology* **80**:275-290.

278

279 Arets, E. J. M. M. 2005. Long-term responses of populations and communities of trees to selective  
280 logging in tropical rain forests in Guyana. *Tropenbos Guyana Series 13*, Georgetown, Guyana.

281

282 Asner, G. P., M. Keller, and J. N. M. Silva. 2004. Spatial and temporal dynamics of forest canopy gaps  
283 following selective logging in the eastern Amazon. *Global Change Biology* **10**:765-783.

284

285 Asner, G. P., T. K. Rudel, T. M. Aide, R. Defries, and R. Emerson. 2009. A contemporary assessment  
286 of change in humid tropical forests. *Conservation Biology* **23**:1386-1395.

287

288 Baraloto, C., P. Forget, and D. E. Goldberg. 2005. Seed mass, seedling size and neotropical tree  
289 seedling establishment. *Journal of Ecology* **93**:1156-1166.

290

291 Baraloto, C., and D. E. Goldberg. 2004. Microhabitat associations and seedling bank dynamics in a  
292 neotropical forest. *Oecologia* **141**:701-712.

293

294 Bicknell, J. and C.A. Peres, 2010. Vertebrate population responses to reduced-impact logging in a  
295 neotropical forest. *Forest Ecology and Management* **259**:2267-2275.

296

297 Bicknell, J.E., S.P. Phelps, R.G. Davies, D.J. Mann, M.J. Struebig, and Z.G. Davies. 2014. Dung  
298 beetles as indicators for rapid impact assessments: Evaluating best practice forestry in the neotropics.  
299 *Ecological Indicators* **43**:154-161.

300

301 Bicknell, J.E., M.J. Struebig, and Z.G. Davies, 2015. Reconciling timber extraction with biodiversity  
302 conservation in tropical forests using reduced-impact logging. *Journal of Applied Ecology* **52**:379-  
303 388.

304

305 Blaser, J., A. Sarre, D. Poore, and S. Johnson. 2011. Status of tropical forest management 2011. ITTO,  
306 Yokohama. Available at: [www.itto.int/sfm/](http://www.itto.int/sfm/).

307

308 Boot, R. G. A. 1996. Chapter 11: The significance of seedling size and growth rate of tropical rain  
309 forest tree seedlings for regeneration in canopy openings. Pages 267-283 in M. D. Swaine, editor. *The*  
310 *Ecology of Tropical Forest Tree Seedlings*. Man and the Biosphere Series 17. UNESCO, Paris, France.

311

312 Brokaw, N. V. L. 1982. The definition of treefall gap and its effect on measures of forest dynamics.  
313 *Biotropica* **14**:158-160.

314

315 Bryan, J., P. Shearman, J. Ash, and J. B. Kirkpatrick. 2010. Impact of logging on aboveground biomass  
316 stocks in lowland rain forest, Papua New Guinea. *Ecological Applications* **20**:2096-2103.

317

318 Bullock, J. M. 2006. Chapter 4: Plants. Pages 186-213. In: W. J. Sutherland, editor. *Ecological Census*  
319 *Techniques: A Handbook*. Second Edition. Cambridge University Press, Cambridge.

320

- 321 De Avila, A. L., A. R. Ruschel, J. O. P. de Carvalho, L. Mazzei, J. N. M. Silva, J. D. C. Lopes, M. M.  
322 Araujo, C. F. Dormann, and J. Bauhus. 2015. Medium-term dynamics of tree species composition in  
323 response to silvicultural intervention intensities in a tropical rain forest. *Biological Conservation*  
324 **191**:577-586
- 325
- 326 De Grandcourt, A., D. Epron, P. Montpied, E. Louisanna, M. Bereau, J. Garbaye, and J. M. Guehl.  
327 2004. Contrasting responses to mycorrhizal inoculation and phosphorus availability in seedlings of  
328 two tropical rainforest tree species. *New Phytologist* **161**:865-875.
- 329
- 330 Degen, B., L. Blanc, H. Caron, L. Maggia, A. Kremer, and S. Gourelt-Fleury. 2006. Impact of selective  
331 logging on genetic composition and demographic structure of four tropical tree species. *Biological*  
332 *Conservation* **131**:386-401.
- 333
- 334 Dekker, M., and N. R. de Graaf. 2003. Pioneer and climax tree regeneration following selective  
335 logging with silviculture in Suriname. *Forest Ecology and Management* **172**:183-190.
- 336
- 337 Dykstra, D. P., and R. Heinrich. 1992. Sustaining tropical forests through environmentally sound  
338 harvesting practices. *Unasylva* **43**:9-15.
- 339
- 340 Dykstra, D. P., and R. Heinrich. 1996. FAO model code of forest harvesting practice. Food and  
341 Agriculture Organization of the United Nations, Rome, Italy.
- 342
- 343 Dykstra, D.P. 2002. Chapter 2: Reduced impact logging: concepts and issues. In T. Enters, P. B. Durst,  
344 G. B. Applegate, P. C. S. Kho, and G. Man, editors. *Applying Reduced Impact Logging to Advance*  
345 *Sustainable Forest Management*. Food and Agriculture Organization of the United Nations, Bangkok,



- 346 Thailand. Available from <http://www.fao.org/docrep/005/AC805E/ac805e04.htm#bm04> (accessed  
347 March 2014).
- 348
- 349 Edwards, D. P., T. H. Larsen, T. D. S. Docherty, F. A. Ansell, W. W. Hsu, M. A. Derhe, K. C. Hamer,  
350 and D. S. Wilcove. 2011. Degraded lands worth protecting: the biological importance of Southeast  
351 Asia's repeatedly logged forests. *Proceedings of the Royal Society B: Biological Sciences* **278**:82-90.  
352
- 353 FAO (Food and Agriculture Organization of the United Nations). 2006. Global Forest Resources  
354 Assessment 2005: Progress Towards Sustainable Forest Management. FAO Forestry Paper 147. Food  
355 and Agriculture Organization of the United Nations, Rome, Italy. Available from  
356 <http://www.fao.org/forestry/fra/fra2005/en/> (accessed July 2014).  
357
- 358 FAO (Food and Agriculture Organization of the United Nations). 2010. Global Forest Resources  
359 Assessment 2010: Main Report. FAO Forestry Paper 163. Food and Agriculture Organization of the  
360 United Nations, Rome, Italy. Available from <http://www.fao.org/docrep/013/i1757e/i1757e.pdf>  
361 (accessed July 2014).  
362
- 363 Fenner, M. 1985. *Seed Ecology*. Chapman and Hall, London.  
364
- 365 Forget, P. M. 1989. Natural regeneration of an autochorous species of the Guianese forest: *Eperua*  
366 *falcata* Aublet – *Caesalpinaceae*. *Biotropica* **21**:115-125.  
367
- 368 Forget, P., J. M. Rankin-De Merona, and C. Julliot. 2001. The effects of forest type, harvesting and  
369 stand refinement on early seedling recruitment in a tropical rain forest. *Journal of Tropical Ecology*  
370 **17**:593-609.

371

372 Fournier-Oraggi, L. A. 2002. *Cecropia obtusifolia* Bertol. Pages 382-383. In: J. A. Vozzo, editor.  
373 Tropical Tree Seed Manual. Agriculture Handbook 721, USDA Forest Service, Washington DC.

374

375 Gardner, T. 2010. Monitoring Forest Biodiversity: Improving Conservation Through Ecologically  
376 Responsible Management. Earthscan, London and New York.

377

378 Gentry, A. H. 1992. Tropical forest biodiversity: distributional patterns and their conservational  
379 significance. *Oikos* **63**:19-28.

380

381 Gerard, J., R. B. Miller, and B. J. H. ter Welle. 1996. Major Timber Trees of Guyana: Timber  
382 Characteristics and Utilization. Tropenbos Series 15. The Tropenbos Foundation, Wageningen, The  
383 Netherlands.

384

385 GFC (Guyana Forestry Commission). 2002. Code of Practice for Timber Harvesting. Second Edition.  
386 Guyana Forestry Commission website. Available from  
387 <http://www.forestry.gov.gy/Downloads/CoP%20Timber%20Harvesting.pdf> (accessed March 2012).

388

389 Gibson, L., T. M. Lee, L. P. Koh, B. W. Brook, T. A. Gardner, J. Barlow, C. A. Peres, C. J. A.  
390 Bradshaw, W. F. Laurance, T. E. Lovejoy, and N. S. Sodhi. 2011. Primary forests are irreplaceable for  
391 sustaining tropical biodiversity. *Nature* **478**:378-381.

392

393 Hammond, D. S., S. Gourlet-Fleury, P. van der Hout, H. ter Steege, and V. K. Brown 1996. A  
394 compilation of known Guianan timber trees and the significance of their dispersal mode, seed size and  
395 taxonomic affinity to tropical rain forest management. *Forest Ecology and Management* **83**:99-116.

396

397 Hartshorn, G. S. 1978. Tree falls and tropical forest dynamics. Pages 617-638. In P. B. Tomlinson,  
398 and M. H. Zimmerman, editors. *Tropical Trees as Living Systems*. Cambridge University Press,  
399 Cambridge.

400

401 Herault, B., J. Ouallet, L. Blanc, F. Wagner, and C. Baraloto. 2010. Growth responses of neotropical  
402 trees to logging gaps. *Journal of Applied Ecology* **47**: 821-831.

403

404 Horsley, T.W., Bicknell, J.E., Lim, B.K. and Ammerman, L.K. 2015. Seed dispersal by frugivorous  
405 bats in central Guyana and a description of previously unknown plant-animal interactions. *Acta*  
406 *Chiropterologica*. **17**: 331-336.

407

408 ITTO (International Timber Organization). 2015. ITTO Lesser Used Species: Tropical Timber  
409 Information (website). Available from [http://www.tropicaltimber.info/specie/basralocus-dicorynia-](http://www.tropicaltimber.info/specie/basralocus-dicorynia-guianensis)  
410 [guianensis](http://www.tropicaltimber.info/specie/basralocus-dicorynia-guianensis) (accessed 27 December 2015)

411

412 Johnston, M., and M. Gillman. 1995. Tree population studies in low-diversity forests, Guyana. I.  
413 Floristic composition and stand structure. *Biodiversity and Conservation* **4**:339-362.

414

415 Jonkers, W. B. J. 2002. Reduced impact logging in Sarawak, Guyana and Cameroon - the reasons  
416 behind differences in approach. In T. Enters, P. B. Durst, G. B. Applegate, P. C. S. Kho, and G. Man,  
417 editors. *Applying Reduced Impact Logging to Advance Sustainable Forest Management*. Food and  
418 Agriculture Organization of the United Nations, Bangkok, Thailand. Available from  
419 <http://www.fao.org/DOCREP/005/AC805E/ac805e0n.htm#bm23> (accessed July 2014).

420

421 Karsten, R. J., H. Meilby, and J. B. Larsen. 2014. Regeneration and management of lesser known  
422 timber species in the Peruvian Amazon following disturbance by logging. *Forest Ecology and*  
423 *Management* **327**:76-85.

424

425 Kuusipalo, J., Y. Jafarsidik, G. Adjers, and K. Tuomela. 1996. Population dynamics of tree seedlings  
426 in a mixed dipterocarp rainforest before and after logging and crown liberation. *Forest Ecology and*  
427 *Management* **81**:85-94.

428

429 Lawton, R. O. and F. E. Putz. 1988. Natural disturbance and gap-phase regeneration in a wind-exposed  
430 tropical cloud forest. *Ecology* **69**:764-777.

431

432 Lobo, J., G. Barrantes, M. Castillo, R. Quesada, T. Maldonado, E. J. Fuchs, S. Solis, and M. Quesada.  
433 2007. Effects of selective logging on the abundance, regeneration and short-term survival of *Caryocar*  
434 *costaricense* (Caryocaceae) and *Peltogyne purpurea* (Caesalpinaceae), two endemic timber species of  
435 southern Central America. *Forest Ecology and Management* **245**:88-95.

436

437 Martinez-Ramos, M., E. Alvarez-Buylla, and J. Sarukhan. 1989. Tree demography and gap dynamics  
438 in a tropical rain forest. *Ecology* **70**:555-558.

439

440 McClune, B., and M.J. Mefford. 2011. PC-ORD. Multivariate analysis of ecological data.

441

442 Pinard, M., B. Howlett, and D. Davidson. 1996. Site conditions limit pioneer tree recruitment after  
443 logging of dipterocarp forest in Sabah, Malaysia. *Biotropica* **28**:2-12.

444

- 445 Pinard, M. A., and F. E. Putz. 1996. Retaining forest biomass by reducing logging damage. *Biotropica*  
446 **28**:278-295.
- 447
- 448 Polak, A. M. 1992. Major Timber Trees of Guyana: A Field Guide. Tropenbos Series 2. The Tropenbos  
449 Foundation, Wageningen, The Netherlands.
- 450
- 451 Pons, T. L., E. E. Alexander, N. C. Houter, S. A. Rose, and T. Rijkers. 2005. Ecophysiological patterns  
452 in Guianan forest plants. Chapter 3. In: D. S. Hammond (Ed). *Tropical Forests of the Guiana Shield:  
453 Ancient Forests in a Modern World*. CABI Publishing, CAB International, Wallingford UK.
- 454
- 455 Putz, F. E., K. H. Redford, J. G. Robinson, R. Fimbel, and G. M Blate. 2000. Biodiversity Conservation  
456 in the Context of Tropical Forest Management. World Bank Biodiversity Series - Impact Studies 1.  
457 Paper No. 75. World Bank Environment Department, Washington, D.C., USA.
- 458
- 459 Putz, F. E., P. Sist, T. Fredricksen, and D. Dykstra. 2008. Reduced-impact logging: challenges and  
460 opportunities. *Forest Ecology and Management* **256**:1427-1433.
- 461
- 462 Putz, F. E., P. A. Zuidema, T. Synnott. 2012. Sustaining conservation values in selectively logged  
463 tropical forests: the attained and the attainable. *Conservation Letters* **5**:296-303.
- 464
- 465 Putzel, L., Peters, C. M., and Romo, M. 2011. Post-logging regeneration and recruitment of  
466 shihuahuaco (*Dipteryx* spp.) in Peruvian Amazonia: Impications for management. *Forest Ecology and  
467 Management* **261**:1099-1105.
- 468

469 R Core Team. 2013. R: A language and environment for statistical computing. R Foundation for  
470 Statistical Computing, Vienna, Austria. <http://www.R-project.org>.

471

472 Rose, S. A. 2000. Seeds, seedlings and gaps - size matters: a study in the tropical rain forest of Guyana.  
473 Tropenbos-Guyana Series 9. Tropenbos-Guyana Programme, Georgetown, Guyana.

474

475 Shearman, P., J. Bryan, and W. F. Laurance. 2012. Are we approaching 'peak timber' in the tropics?  
476 Biological Conservation **151**:17-21.

477

478 Sist, P., R. Fimbel, D. Sheil, R. Nasi, and M. H. Chevallier. 2003. Towards sustainable management  
479 of mixed dipterocarp forests of Southeast Asia: Moving beyond minimum diameter cutting limits.  
480 Environmental Conservation **30**:364-374.

481

482 ter Steege, H. 1990. A monograph of Wallaba, Mora and Greenheart. Tropenbos Technical Series 5.  
483 The Tropenbos Foundation, Ede, The Netherlands.

484

485 ter Steege, H., C. Bokdam., M. Boland., J. Dobbelsteen., and I. Verburg. 1994. The effects of man  
486 made gaps on germination, early survival, and morphology of *Chlorocardium rodiei* seedlings in  
487 Guyana. Journal of Tropical Ecology **10**:245-260.

488

489 ter Steege, H., and D. S. Hammond. 2000. An analysis at the ecosystem level: community  
490 characteristics, diversity, and disturbance. In H. ter Steege, editor. Plant Diversity in Guyana: With  
491 Recommendations for a National Protected Area Strategy. Tropenbos Series 18. The Tropenbos  
492 Foundation, Wageningen, The Netherlands.

493

494 ter Steege, H., and Zondervan, G. 2000. A preliminary analysis of large-scale forest inventory data of  
495 the Guiana Shield. In. H. ter Steege, editor. *Plant diversity in Guyana: With recommendations for a*  
496 *National Protected Area Strategy*. Tropenbos Series 18. The Tropenbos Foundation, Wageningen, The  
497 Netherlands. 35-54.

498

499 ter Steege, H., I. Welch., and R. Zagt. 2002. Long-term effect of timber harvesting in the Bartica  
500 Triangle, Central Guyana. *Forest Ecology and Management* **170**:127-144.

501

502 ter Steege, H., N. C. A. Pitman, D. Sabatier, C. Baraloto, R. P. Salomão, J. E. Guevara, O. L. Phillips,  
503 C. V. Castilho, W. E. Magnusson, J. Molino, A. Monteagudo, P. N. Vargas, J. C. Montero, T. R.  
504 Feldpausch, E. N. H. Coronado, T. J. Killeen, B. Mostacedo, R. Vasquez, R. L. Assis, J. Terborgh, F.  
505 Wittmann, A. Andrade, W. F. Laurance, S. G. W. Laurance, B. S. Marimon, B. Marimon Jr., I. C. G.  
506 Vieira, I. L. Amaral, R. Brienen, H. Castellanos, D. C. López, J. F. Duivenvoorden, H. F. Mogollón,  
507 F. D. de Almeida Matos, N. Dávila, R. García-Villacorta, P. R. S. Diaz, F. Costa, T. Emilio, C. Levis,  
508 J. Schietti, P. Souza, A. Alonso, F. Dallmeier, A. J. D. Montoya, M. T. F. Piedade, A. Araujo-  
509 Murakami, L. Arroyo, R. Gribel, P. V. A. Fine, C. A. Peres, M. Toledo, G. A. Aymard C., T. R. Baker,  
510 C. Cerón, J. Engel, T. W. Henkel, P. Maas, P. Petronelli, J. Stropp, C. E. Zartman, D. Daly, D. Neill,  
511 M. Silveira, M. R. Paredes, J. Chave, D. de Andrade Lima Filho, P. M. Jørgensen, A. Fuentes, J.  
512 Schöngart, F. C. Valverde, A.D. Fiore, E. M. Jimenez, M. C. P. Mora, J. F. Phillips, G. Rivas, T. R.  
513 van Andel, P. von Hildebrand, B. Hoffman, E. L. Zent, Y. Malhi, A. Prieto, A. Rudas, A.R. Ruschell,  
514 N. Silva, V. Vos, S. Zent, A. A. Oliveira, A. C. Schutz, T. Gonzales, M. T. Nascimento, H. Ramirez-  
515 Angulo, R. Sierra, M. Tirado, M. N. U. Medina, G. van der Heijden, C. I. A. Vela, E. V. Torre, C.  
516 Vriesendorp, O. Wang, K. R. Young, C. Baider, H. Balslev, C. Ferreira, I. Mesones, A. Torres-Lezama,  
517 L. E. U. Giraldo, R. Zagt, M. N. Alexiades, L. Hernandez, I. Huamantupa-Chuquimaco, W. Milliken,

- 518 W. P. Cuenca, D. Pauletto, E. V. Sandoval, L. V. Gamarra, K. G. Dexter, K. Feeley, G. Lopez-  
519 Gonzalez, and M. R. Silman. 2013. Hyperdominance in the Amazonian Tree Flora. *Science* **342**:6156.  
520
- 521 van der Hout, P. 1999. Reduced Impact Logging in the Tropical Rain Forest of Guyana: Ecological,  
522 Economic and Silvicultural Consequences. Tropenbos – Guyana Series 6. Tropenbos-Guyana  
523 Programme, Georgetown, Guyana.  
524
- 525 van der Hout, P. 2000. Testing the applicability of reduced impact logging in greenheart forest in  
526 Guyana. *International Forestry Review* **2**:24-32.  
527
- 528 Vazquez-Yanes, C., and H. Smith. 1982. Phytochrome control of seed germination in the tropical rain  
529 forest pioneer trees *Cecropia obtusifolia* and *Piper auritum* and its ecological significance. *New*  
530 *Phytologist* **92**:477-485.  
531
- 532 Waide, R. B., and A. E. Lugo. 1992. A research perspective on disturbance and recovery of a tropical  
533 montane forest. Pages 173-190 in J. G. Goldammer, editor. *Tropical Forests in Transition: Ecology of*  
534 *Natural and Anthropogenic Disturbance Processes*. Birkhauser Verlag, Basel, Switzerland.  
535
- 536 Watkins, G. G. 2005. The Iwokrama Centre and Forest: Introduction to special papers. *Proceedings of*  
537 *the Academy of Natural Sciences of Philadelphia* **154**:1-5.  
538
- 539 West, T.A.P., E. Vidal, & F.E. Putz. 2014. Forest biomass recovery after conventional and reduced-  
540 impact logging in Amazonian Brazil. *Forest Ecology and Management* **314**: 59-63.  
541



- 542 Yamamoto, S.I. 2000. Forest gap dynamics and tree regeneration. *Journal of Forest Research* **5**:223-  
543 229.
- 544
- 545 Zagt, R. J. 1997. *Tree Demography in the Tropical Rain Forest of Guyana. Tropenbos–Guyana Series*  
546 3. Tropenbos-Guyana Programme, Georgetown, Guyana.
- 547
- 548 Zimmerman, B. L., and C. F. Kormos. 2012. Prospects for sustainable logging in tropical forests.  
549 *BioScience* **62**:479-487.

**Table 1:** Summary information related to the reproductive ecology of four commercially valuable (CV) and two pioneer (PI) tree species, including seed mass, shade tolerance, primary seed dispersal vectors (u, unassisted; m, mammal; b, bat and/or bird; w, wind and/or water), seed dispersal distance, tree height at maturity and diameter at breast height (DBH) at maturity (Fournier-Origgi 2002; Gerard et al. 1996; Hammond et al. 1996; Horsley et al. 2015; ITTO 2015). Market information for the Iwokrama operations is provided for the four timber tree species, and comprises minimum cutting size (DBH) for logs, and mean annual increments (MAI).

Species	Common name	Species type	Reproductive ecology					Market information		
			Seed Mass <sup>1</sup> (g)	Shade tolerant Y/N	Seed dispersal vectors	Seed dispersal distance (m)	Height at maturity (m)	DBH at maturity (m)	Minimum cutting DBH (m)*	MAI m <sup>3</sup> /ha/yr <sup>-1</sup> *
<i>Chlorocardium rodiei</i>	Greenheart	CV	65.5±22.3	Y	u/m	30	20-45	0.3-0.6	0.45	0.129
<i>Eperua falcata</i>	Soft wallaba	CV	9.22	Y	u/m	50	15-30	0.6-1	0.5	0.166
<i>Dicorynia guianensis</i>	Basralocus	CV	1.36	Y	u/m	>50	20-45	0.5-1.5	0.5	unknown
<i>Goupia glabra</i>	Kabukalli	CV	0.001	Y	w/b	>100	20-40	0.6-1.5	0.4	0.037
<i>Cecropia obtusifolia</i>	<i>Cecropia</i>	PI	<0.001	N	w/b	>100	10-40	0.2-0.5	-	-
<i>Cecropia sciadophylla</i>	<i>Cecropia</i>	PI	<0.001	N	w/b	>100	10-40	0.2-0.5	-	-

<sup>1</sup> Fresh seed weight for *Chlorocardium rodiei*, *Eperua falcata*, and *Dicorynia guianensis*. Dry seed weight *Goupia glabra*, *Cecropia obtusifolia*, and *Cecropia sciadophylla*. (de Grandcourt et al. 2004; Rose 2000; ter Steege 1990).

\* In Iwokrama Forest, Guyana

**Table 2:** Comparison of seedling densities between 1.5 year and 4.5 year postharvest logging treatment and control (unlogged) plots, using Kruskal-Wallis and Mann-Whitney U post-hoc tests, for four commercially valuable (CV) and two pioneer (PI) tree species.

Species name	Common name	Species type	Seedling density			Post-hoc comparison					
						1.5 years vs. Unlogged		4.5 years vs. Unlogged		1.5 years vs. 4.5 years	
			$X^2$	$df$	$p$	$U$	$p$	$U$	$p$	$U$	$p$
<i>Chlorocardium rodiei</i>	Greenheart	CV	2.7	2	0.25	149.0	0.17	181.5	0.62	147.5	0.16
<i>Eperua falcata</i>	Soft wallaba	CV	20.5	2	<0.001	184.5	0.65	45.0	<0.001	73.5	<0.001
<i>Dicorynia guianensis</i>	Basralocus	CV	1.7	2	0.42	166.5	0.36	155.0	0.22	181.5	0.61
<i>Goupia glabra</i>	Kabukalli	CV	10.5	2	<0.01	121.0	<0.05	98.0	<0.01	180.0	0.57
<i>Cecropia obtusifolia</i>	<i>Cecropia</i>	PI	6.2	2	<0.05	170.0	0.08	N/A	N/A	170.0	0.08
<i>Cecropia sciadophylla</i>	<i>Cecropia</i>	PI	4.1	2	0.13	180.0	0.15	N/A	N/A	180.0	0.15

**Table 3:** Mean seedling densities per hectare for each species within three height classes (0-50, 50-100 and 100-150 cm) across unlogged and 1.5 year and 4.5 year postharvest logging plots. One decimal place is provided where densities are <1 seedling per hectare.

Height class	Species		Mean density (seedlings/ha <sup>-1</sup> )		
			Plot type		
			Unlogged	1.5 years	4.5 years
0-50	<i>Chlorocardium rodiei</i>	Greenheart	476	198	422
	<i>Eperua falcata</i>	Soft wallaba	17	127	303
	<i>Dicorynia guianensis</i>	Basralocus	228	60	133
	<i>Goupia glabra</i>	Kabukalli	0.5	8	5
	<i>Cecropia obtusifolia</i>	Cecropia	0	0.5	0
	<i>Cecropia sciadophylla</i>	Cecropia	0	0.3	0
50-100	<i>Chlorocardium rodiei</i>	Greenheart	405	372	460
	<i>Eperua falcata</i>	Soft wallaba	14	15	88
	<i>Dicorynia guianensis</i>	Basralocus	7	7	7
	<i>Goupia glabra</i>	Kabukalli	0	1	1
	<i>Cecropia obtusifolia</i>	Cecropia	0	1	0
	<i>Cecropia sciadophylla</i>	Cecropia	0	0	0
100-150	<i>Chlorocardium rodiei</i>	Greenheart	10	22	24
	<i>Eperua falcata</i>	Soft wallaba	3	4	18
	<i>Dicorynia guianensis</i>	Basralocus	1	2	0.3
	<i>Goupia glabra</i>	Kabukalli	0	0.8	1
	<i>Cecropia obtusifolia</i>	Cecropia	0	0.8	0
	<i>Cecropia sciadophylla</i>	Cecropia	0	0.3	0
All height classes combined	<i>Chlorocardium rodiei</i>	Greenheart	891	592	906
	<i>Eperua falcata</i>	Soft wallaba	34	146	409
	<i>Dicorynia guianensis</i>	Basralocus	236	68	140
	<i>Goupia glabra</i>	Kabukalli	0.8	10	7
	<i>Cecropia obtusifolia</i>	Cecropia	0	3	0
	<i>Cecropia sciadophylla</i>	Cecropia	0	0.5	0

## Figure legends

**Figure 1.** The location of the study area in Iwokrama forest, Guyana, South America. The Reduced-Impact Logging 1.5 and 4.5 year postharvest treatment plots are indicated by dark grey and black squares respectively. Unlogged forest plots are shown as light grey squares. Logging roads and skid trails (dashed lines) are shown within logged forest to indicate the level of logging disturbance. Inset: The location of Iwokrama forest (shaded grey) within Guyana.

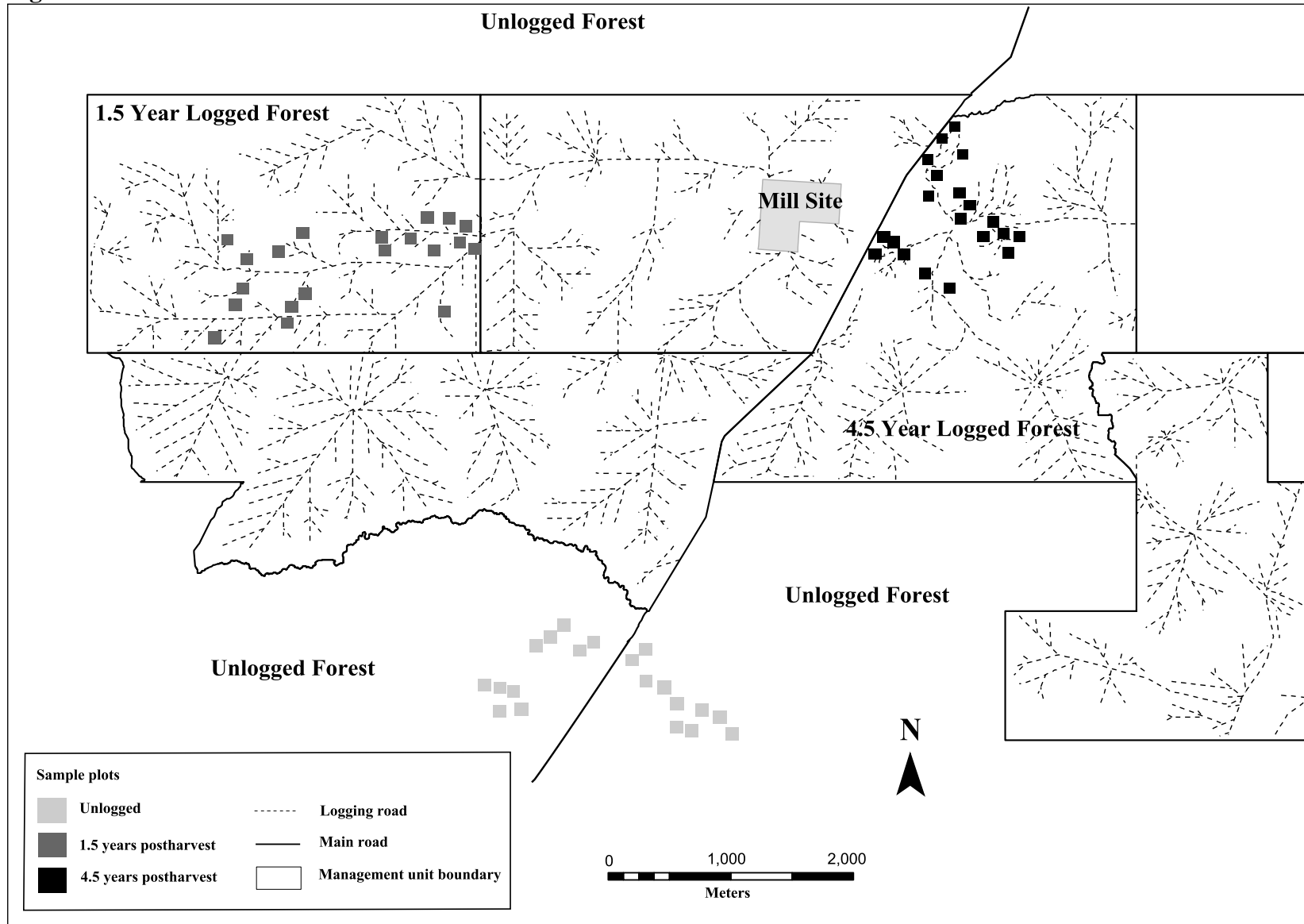
**Figure 2.** Box plots showing median  $\log_{10}$  densities of seedlings for four commercially valuable timber and two pioneer tree species, across 20 unlogged, Reduced-Impact Logging (RIL) 1.5 years postharvest and RIL 4.5 years postharvest treatment plots: (a) *Chlorocardium rodiei* (greenheart); (b) *Dicorynia guianensis* (basralocus); (c) *Eperua falcata* (soft wallaba); (d) *Goupia glabra* (kabukalli); (e) *Cecropia obtusifolia*; and, (f) *Cecropia sciadophylla*. Thick horizontal lines indicate median values, the boxes show the interquartile range, and the vertical lines specify either the maximum value or 1.5 times the interquartile range (whichever is smaller), ° indicates a moderate outlier and \* an extreme outlier. Associated statistics are given in Table 2.

**Figure 3.** Box plots showing median  $\log_{10}$  densities of seedlings for four commercially valuable timber and two pioneer tree species, across 20 unlogged, Reduced-Impact Logging (RIL) 1.5 years postharvest and RIL 4.5 years postharvest treatment plots, within three height classes (0-50, 50-100 and 100-150 cm): (a) *Chlorocardium rodiei* (greenheart); (b) *Dicorynia guianensis* (basralocus); (c) *Eperua falcata* (soft wallaba); (d) *Goupia glabra* (kabukalli); (e) *Cecropia obtusifolia*; and, (f) *Cecropia sciadophylla*. Dark grey boxes are for 0-50 cm, light grey boxes for 50-100 cm and white boxes for 100-150 cm height classes. Thick horizontal lines indicate median values, the boxes show the interquartile range, and the vertical lines specify either the maximum value or 1.5 times the

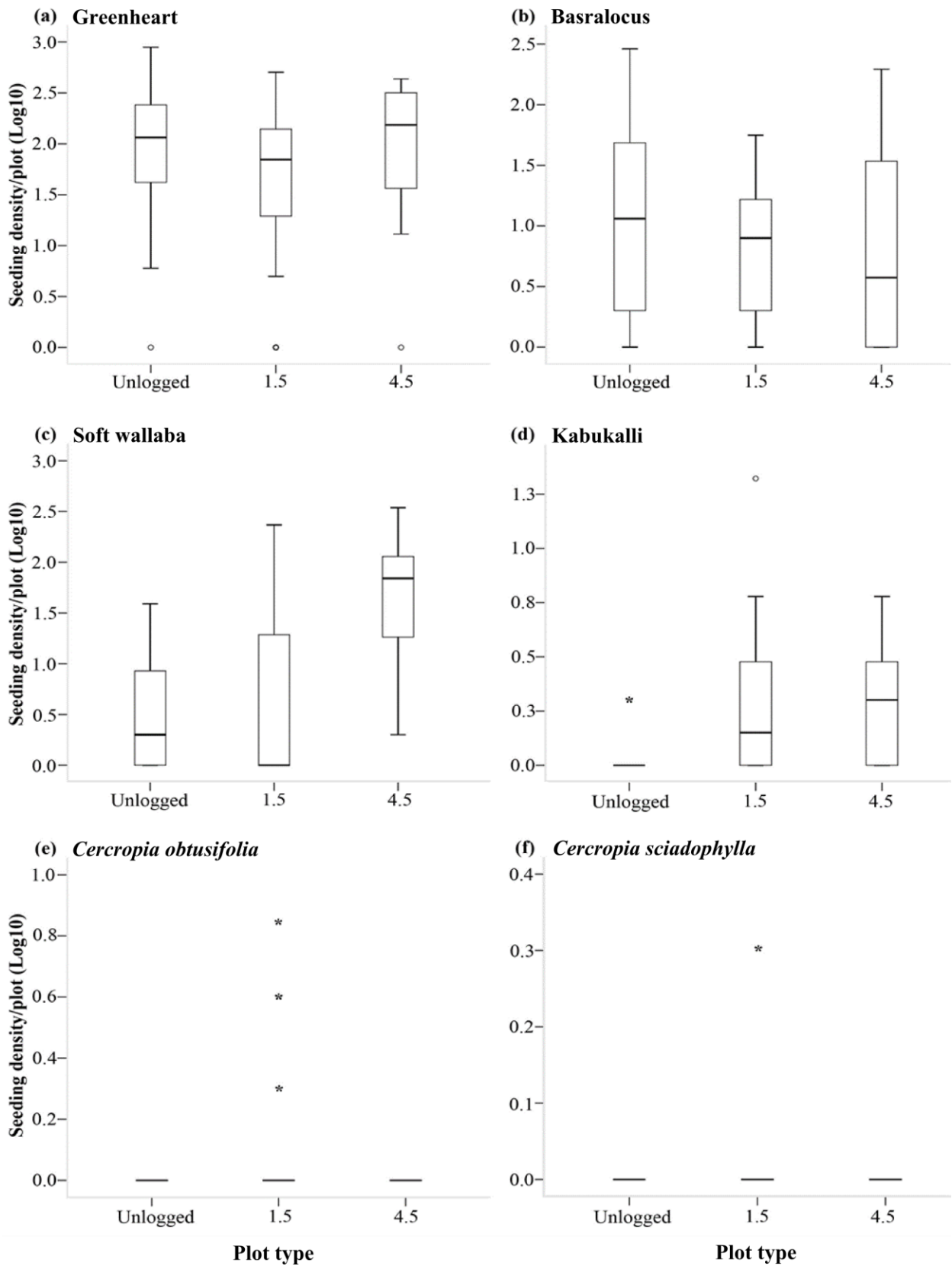
interquartile range of the data (whichever is smaller), ° indicates a moderate outlier and \* an extreme outlier. Associated statistics are given in the results text.

**Figure 4.** Non-metric multidimensional scaling (NMDS) ordination of seedling community structure across the two Reduced-Impact Logging (RIL) treatment and unlogged forest plots: white, unlogged; grey, RIL 1.5 year postharvest; black, RIL 4.5 years postharvest. The first NMDS axis explains 27% of the variation, and the second axis 35%. Stress = 0.15.

**Figure 1**

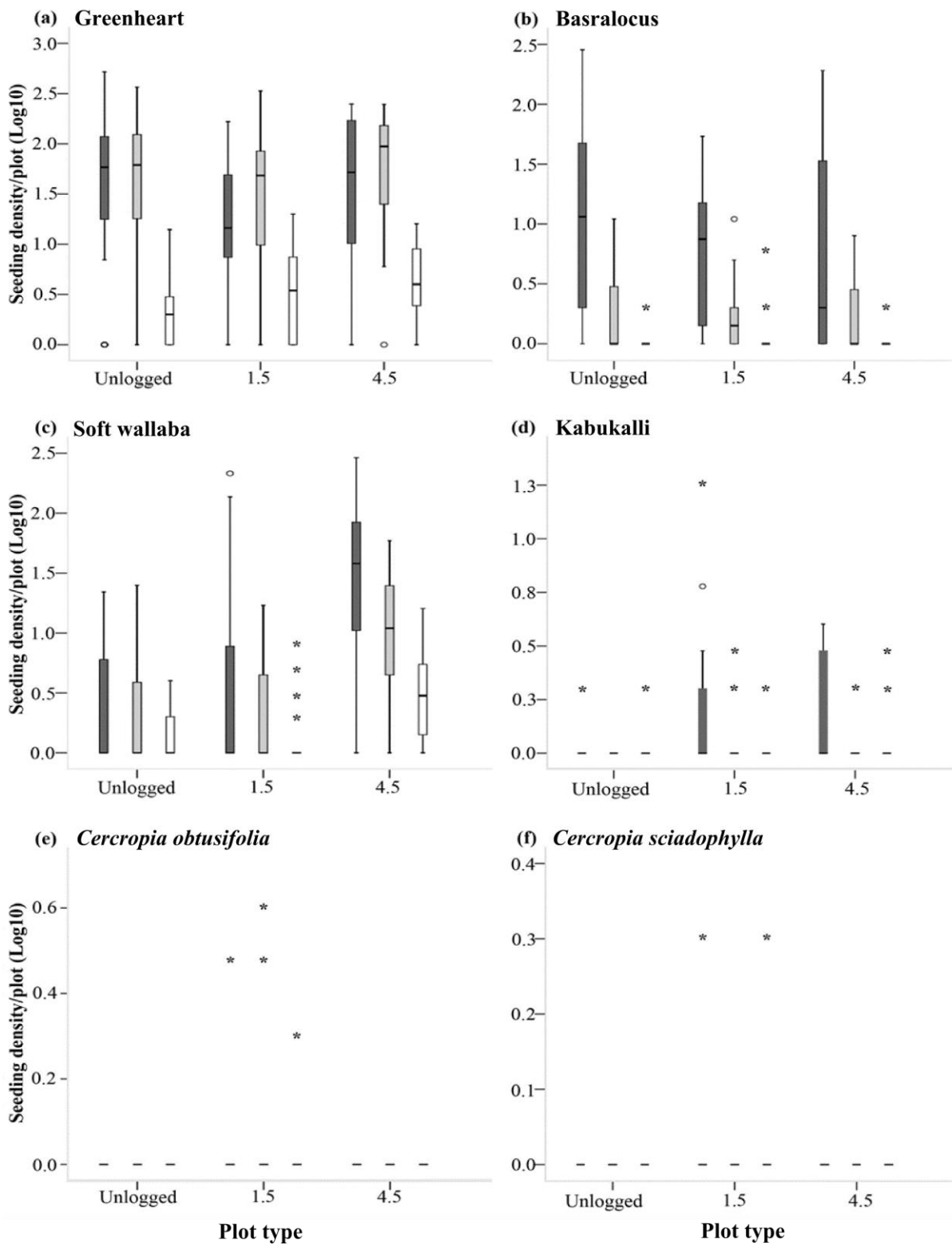


**Figure 2**





**Figure 3**



**Figure 4**

