



# Kent Academic Repository

**Mylona, Athina, Andrieu-Soler, Charlotte, Thongjuea, Supat, Martella, Andrea, Soler, Eric, Jorna, Ruud, Hou, Jun, Kockx, Christel, van Ijcken, Wilfred, Lenhard, Boris and others (2013) *Genome-wide analysis shows that Ldb1 controls essential hematopoietic genes/pathways in mouse early development and reveals novel players in hematopoiesis*. *Blood*, 121 (15). pp. 2902-13. ISSN 1528-0020.**

## Downloaded from

<https://kar.kent.ac.uk/114688/> The University of Kent's Academic Repository KAR

## The version of record is available from

## This document version

Author's Accepted Manuscript

## DOI for this version

## Licence for this version

CC BY-ND (Attribution-NoDerivatives)

## Additional information

## Versions of research works

### Versions of Record

If this version is the version of record, it is the same as the published version available on the publisher's web site. Cite as the published version.

### Author Accepted Manuscripts

If this document is identified as the Author Accepted Manuscript it is the version after peer review but before type setting, copy editing or publisher branding. Cite as Surname, Initial. (Year) 'Title of article'. To be published in ***Title of Journal***, Volume and issue numbers [peer-reviewed accepted version]. Available at: DOI or URL (Accessed: date).

### Enquiries

If you have questions about this document contact [ResearchSupport@kent.ac.uk](mailto:ResearchSupport@kent.ac.uk). Please include the URL of the record in KAR. If you believe that your, or a third party's rights have been compromised through this document please see our [Take Down policy](https://www.kent.ac.uk/guides/kar-the-kent-academic-repository#policies) (available from <https://www.kent.ac.uk/guides/kar-the-kent-academic-repository#policies>).

## HEMATOPOIESIS AND STEM CELLS

Genome-wide analysis shows that *Ldb1* controls essential hematopoietic genes/pathways in mouse early development and reveals novel players in hematopoiesis

Athina Mylona,<sup>1</sup> Charlotte Andrieu-Soler,<sup>1,2</sup> Supat Thongjuea,<sup>3</sup> Andrea Martella,<sup>1</sup> Eric Soler,<sup>1,4,5</sup> Ruud Jorna,<sup>1</sup> Jun Hou,<sup>1,6</sup> Christel Kockx,<sup>7</sup> Wilfred van Ijcken,<sup>7</sup> Boris Lenhard,<sup>3,8,9</sup> and Frank Grosveld<sup>1,5,6,10</sup>

<sup>1</sup>Department of Cell Biology, Erasmus MC, Rotterdam, The Netherlands; <sup>2</sup>INSERM U872, Université René Descartes Sorbonne Paris Cité, Team 17, Centre de Recherche des Cordeliers, Paris, France; <sup>3</sup>Computational Biology Unit–Bergen Centre for Computational Science and Sars Centre for Marine Molecular Biology, University of Bergen, Bergen, Norway; <sup>4</sup>Laboratory of Hematopoiesis and Leukemic Stem Cells (LSHL), CEA/INSERM U967, Fontenay-aux-Roses, France; <sup>5</sup>Cancer Genomics Centre, Utrecht, The Netherlands; <sup>6</sup>Netherlands Consortium for Systems Biology, Amsterdam, The Netherlands; <sup>7</sup>Centre for Biomics, Erasmus MC, Rotterdam, The Netherlands; <sup>8</sup>Department of Molecular Sciences, Institute of Clinical Sciences, Faculty of Medicine, Imperial College London, London, United Kingdom; <sup>9</sup>Medical Research Council (MRC) Clinical Sciences Centre, Hammersmith Hospital Campus, London, United Kingdom; and <sup>10</sup>Centre for Biomedical Genetics, Utrecht, The Netherlands

## Key Points

- Lack of yolk-sac hematopoiesis in the *Ldb1*<sup>-/-</sup> mouse results from a decreased number of hemangioblasts and a differentiation block.
- Identification of genes and pathways regulated by *Ldb1* in the hemangioblast reveals potential targets for early developmental manipulation.

The first site exhibiting hematopoietic activity in mammalian development is the yolk-sac blood island, which originates from the hemangioblast. Here we performed differentiation assays, as well as genome-wide molecular and functional studies in blast colony-forming cells to gain insight into the function of the essential *Ldb1* factor in early primitive hematopoietic development. We show that the previously reported lack of yolk-sac hematopoiesis and vascular development in *Ldb1*<sup>-/-</sup> mouse result from a decreased number of hemangioblasts and a block in their ability to differentiate into erythroid and endothelial progenitor cells. Transcriptome analysis and correlation with the genome-wide binding pattern of *Ldb1* in hemangioblasts revealed a number of direct-target genes and pathways misregulated in the absence of *Ldb1*. The regulation of essential developmental factors by *Ldb1* defines it as an upstream transcriptional regulator of hematopoietic/endothelial development. We show the complex interplay that exists between transcription factors and signaling pathways during the very early stages of hematopoietic/endothelial development and the specific signaling occurring in hemangioblasts in contrast to more advanced hematopoietic developmental stages.

Finally, by revealing novel genes and pathways not previously associated with early development, our study provides novel candidate targets to manipulate the differentiation of hematopoietic and/or endothelial cells. (*Blood*. 2013;121(15):2902-2913)

## Introduction

Primitive erythroid and endothelial progenitors emerge almost simultaneously in mesodermal blood islands from a common hemangioblast progenitor<sup>1</sup> characterized by the expression of *Flkl*, the receptor for vascular endothelial growth factor (VEGF) (supplemental Figure 1). The other mesodermal-derived lineage expressing *Flkl* is the cardiovascular progenitor cell, which is distinguishable from the hemangioblast by platelet-derived growth factor (PDGF) receptor expression. The hemangioblast has been studied in mouse, chick, and zebrafish embryos<sup>2</sup> and its existence is supported by the observation that hematopoietic and endothelial progenitors share the expression of common genes.<sup>3-7</sup>

Deletion of *Flkl* leads to embryonic lethality between 8.5 and 9.5 dpc, possibly because of the absence of yolk-sac blood islands.<sup>8,9</sup> The hemangioblast stage can be more specifically studied in vitro through the differentiation of embryonic stem

(ES) cells into embryoid bodies (EBs), widely considered to be a relevant model of embryonic development. Within EBs, blast colony-forming cells (BL-CFCs) can generate blast colonies able to differentiate into hematopoietic and endothelial progenitors. They are therefore considered the in vitro equivalent of the hemangioblast.<sup>10</sup>

Recently, Li et al demonstrated that *Ldb1* is also required during primitive hematopoiesis in the mouse for the development of megakaryocytes and the maintenance of long-term hematopoietic stem cells.<sup>11,12</sup> *Ldb1* deletion is embryonic-lethal after 9.5 dpc, with severe developmental defects, including small size, anterior truncation, absence of heart/foregut structures, and impairment of yolk-sac hematopoiesis and vascular development.<sup>13</sup> However, no functional studies or molecular mechanisms are known describing *Ldb1* function in early hemangioblasts. *Ldb1* molecular function has been well-studied in definitive erythropoiesis, where it plays

Submitted November 18, 2012; accepted January 25, 2013. Prepublished online as *Blood* First Edition paper, February 6, 2013; DOI 10.1182/blood-2012-11-467654.

A. Mylona, C.A.-S., and S.T. contributed equally to this study.

The online version of this article contains a data supplement.

The publication costs of this article were defrayed in part by page charge payment. Therefore, and solely to indicate this fact, this article is hereby marked "advertisement" in accordance with 18 USC section 1734.

© 2013 by The American Society of Hematology

an essential role by forming large transcriptional complexes with Gata1, Lmo2, Scl, E12/E47, HEB, Lyl1, E2-2, Cbfa2t3 (Eto2), Mtgr1, Cdk9, and Lmo4,<sup>14</sup> binding E-box/GATA motifs genome-wide.<sup>15</sup>

In this study, we generated *Ldb1*<sup>-/-</sup> ES cells and performed differentiation assays and genome-wide molecular and functional studies in BL-CFCs to unravel the function of *Ldb1* in early primitive hematopoietic development. We showed that *Ldb1* deletion actually results in 2 separate defects: a decreased number of hemangioblasts and their inability to differentiate further down the hematopoietic and endothelial lineages. To gain insight into the mechanism underlying these defects, we determined the direct and indirect targets of *Ldb1* in these progenitor cells (in contrast to more advanced hematopoietic developmental stages). The genome-wide binding pattern of Ldb1 revealed that it is directly bound to a number of gene loci involved in mammalian hematopoietic development. Their expression is misregulated in the absence of *Ldb1*, placing it as one of the most upstream factors controlling hematopoietic development. Furthermore our study reveals novel genes and pathways that are potentially important for early hematopoietic/endothelial development and shows the complex interplay between transcription factors and signaling pathways in this very early primitive development stage, providing novel candidate targets that can be used to manipulate the differentiation of hematopoietic and/or endothelial cells.

## Methods

### *Ldb1*<sup>-/-</sup> ES cell line generation/genotyping

This study was approved by Erasmus MC, Article 14.

Both *Ldb1* alleles were inactivated using the same construct (supplemental Methods section, supplemental Figure 2A). After targeting the first allele, a single ES cell clone was transiently transfected with a Cre recombinase-expressing vector to delete exons 1/2 and the pMC-neo cassette, followed by targeting of the second allele. Southern blotting confirmed homologous recombination and deletion. Ldb1 protein levels were determined in nuclear extracts from *Ldb1*<sup>+/+</sup> and *Ldb1*<sup>-/-</sup> ES cells with anti-Ldb1 N-18 (Cat. sc-11198, Santa Cruz Technologies, Santa Cruz, CA).

### ES cell differentiation

*Ldb1*<sup>+/+</sup> and *Ldb1*<sup>-/-</sup> ES cells were grown in suspension at 10 000 cells/mL on nonadherent dishes in Iscove's modified Dulbecco's medium (without leukemia inhibitory factor) with 15% fetal calf serum (FCS), 1% P/S, 1% L-glutamine (Gibco, Cat.25030-08), 0.05 µg/mL transferrin (Roche, Cat.652-202), 0.05 µg/mL ascorbic acid (Sigma, Cat.A-4544), and 3 µL/mL monothioglycerol (Sigma, Cat.M-6145) for day 4 EBs and 1.8 µL/mL for day 6/day 8 EBs. Five percent protein-free hybridoma medium II (Gibco, Cat.12040-077) was added for day 6/day 8 EBs.

### Blast colony-forming cell assay

Day 4 EBs were disrupted with trypsin-ethylenediamine tetraacetic acid and cells were transferred in methycellulose-based media with 10% FCS, 1% P/S, 1% L-glutamine, 0.25 µg/mL transferrin, 0.25 µg/mL ascorbic acid, 2 µL/mL monothioglycerol, 0.01 µg/mL mIL6 (R&D Systems, Cat.406-ML), and 0.005 µg/mL hVEGF (R&D Systems, Cat.293-VE) for 3 days. Colonies were scored according to morphology and number under an inverted microscope.

### Colony-forming cell assay

*Ldb1*<sup>+/+</sup> and *Ldb1*<sup>-/-</sup> day 6 EBs were disrupted with 2.5% collagenase. Cells were transferred in methycellulose-based media with 10% FCS, 1%

P/S, 1% L-glutamine, 0.25 µg/mL transferrin, 0.25 µg/mL ascorbic acid, 2 µL/mL monothioglycerol, 5% protein-free hybridoma medium II, 0.01 µg/mL mIL6, 0.001 µg/mL IL3 (R&D Systems, Cat.403-ML), 0.005 µg/mL hIL11 (R&D Systems, Cat.418-ML), 0.003 µg/mL GM-CSF (R&D Systems, Cat.415-ML), 4 U/mL EPO (R&D Systems, Cat.959-ME), 0.005 µg/mL TPO (R&D Systems, Cat.488-TO), and 0.1 µg/mL SCF (R&D Systems, Cat.455-MC). Red primitive erythroid colonies and white macrophage colonies (composed of round cells growing in clumps) were identified microscopically after 6 days according to morphology and color.

### Flow cytometry

Day 4 EB single-cell suspensions were labeled with Flk1-PE clone Avas 12α1 (BD Pharmigen, Cat.555308) in 1% bovine serum albumin/phosphate-buffered saline. Dead cells were excluded by Hoechst 33258 (Molecular Probes). Flk1<sup>+</sup> cells were sorted from day 4 EBs on FACS Aria using the Diva 5.1 software (BD Pharmigen). Day 6/8 EB single-cell suspensions were labeled in 1% bovine serum albumin/phosphate-buffered saline with CD41-PE clone MWReg30 (Santa Cruz, Cat.sc-19963) or CD31-FITC clone MEC 13.3 (BD Pharmigen, Cat.553372). Dead cells were excluded with 7-AAD (Invitrogen). Flow cytometry (FACS) was performed on FACScan (Becton Dickinson) and analyzed with Cell Quest.

### Flk1<sup>+</sup> blast colony-forming cell isolation

Day 4 EBs were disrupted with dissociation buffer (StemPro Accutase, Invitrogen). Dead cells were removed by Lymphoprep separation. Magnetic-assisted cell sorting was carried out with autoMACS Pro Separator (Miltenyi Biotec) using Anti-PE MicroBeads (Miltenyi Biotec) and the Flk1-PE clone Avas 12α1 (BD Pharmigen) antibody. Purity was assessed by FACS.

### Chromatin immunoprecipitation sequencing

Chromatin immunoprecipitation (ChIP) sequencing of endogenous Ldb1 (using anti-Ldb1 antibody N-18, Santa Cruz) on Flk1<sup>+</sup> BL-CFCs isolated from day 4 EBs was performed as previously described.<sup>15,16</sup>

### Gene expression profiling

RNA was isolated from *Ldb1*<sup>+/+</sup> and *Ldb1*<sup>-/-</sup> Flk1<sup>+</sup> cells with the QIAGEN RNeasy Mini Kit, and integrity was checked on the Agilent 2100 Bioanalyzer.

**Microarray.** RNA was converted to biotin-labeled cRNA, hybridized on the Mouse Genome 430 2.0 Array, and analyzed with the Affymetrix GeneChip Scanner 3000 according to the manufacturer's protocol.

**RNA sequencing.** RNA sequencing was performed on Illumina HiSeq 2000 platform according to the manufacturer instructions.

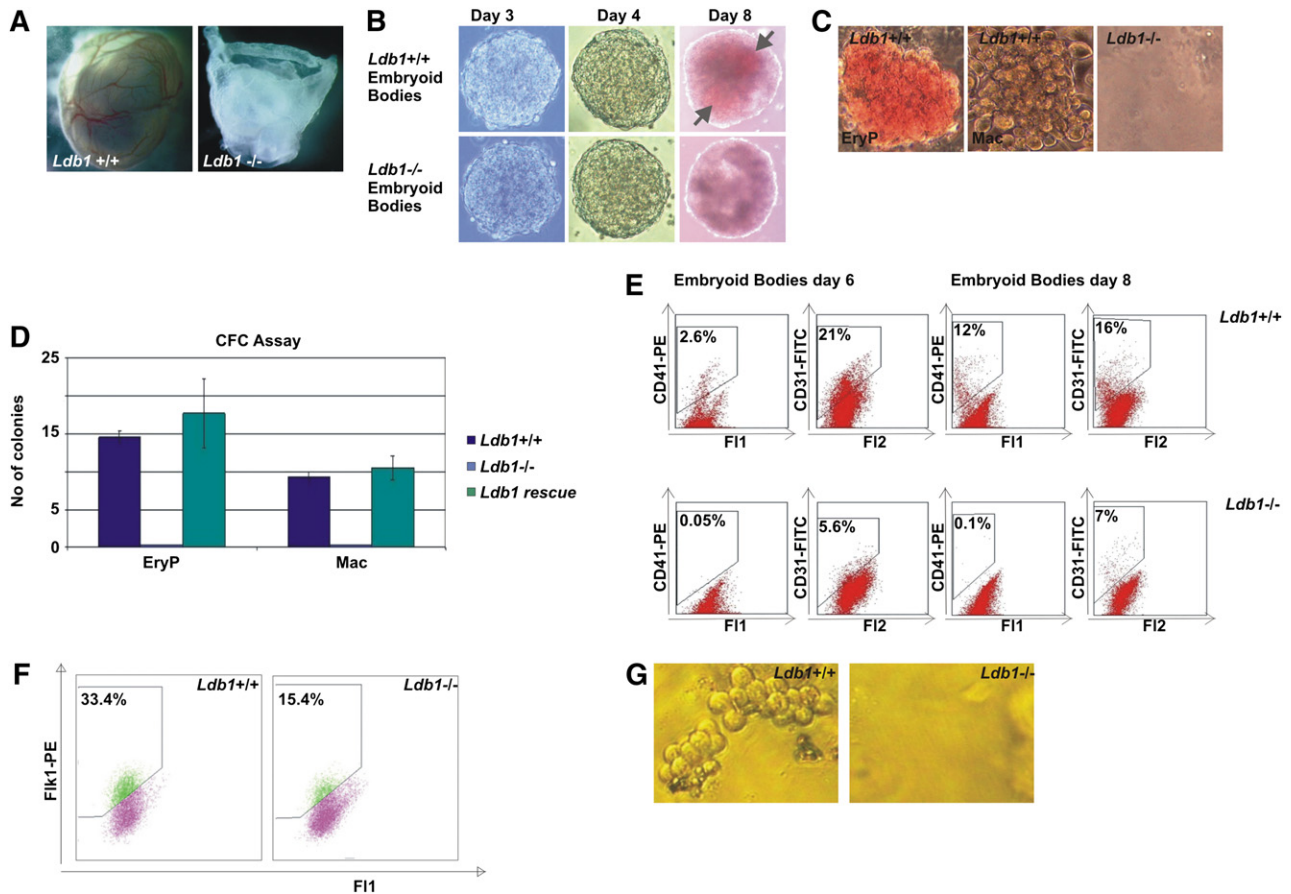
For ChIP/RNA sequencing and microarray bioinformatic analysis see the supplemental material online.

ChIP/RNA sequencing and microarray datasets described in this study have been deposited in the NCBI Gene Expression Omnibus (Accession Number: GSE43044).

## Results

### No primitive erythropoiesis in the *Ldb1*<sup>-/-</sup> mouse

Generation of the *Ldb1*<sup>-/-</sup> mouse is presented in supplemental Figure 2A-D. The first striking observation in the embryos is the complete absence of any blood or vasculature from the extra-embryonic yolk-sac, which also fails to completely surround the whole embryo, showing that erythropoiesis and vascular development are severely impaired in the absence of *Ldb1* (Figure 1A, in agreement with Li et al).<sup>11</sup> *Ldb1*<sup>+/+</sup> mice were viable, able to breed, and did not exhibit any of the phenotypic characteristics of the *Ldb1*<sup>-/-</sup> mice (not shown<sup>11</sup>).



**Figure 1. *Ldb1* deletion leads to defects in primitive hematopoiesis and hemangioblast development.** (A) At 9.5 dpc, blood and a vascular network in the *Ldb1*<sup>-/-</sup> embryo yolk-sac is completely absent. (B) *Ldb1*<sup>+/+</sup> and *Ldb1*<sup>-/-</sup> ES cells were differentiated into EBs. After 3 and 4 days, *Ldb1*<sup>+/+</sup> and *Ldb1*<sup>-/-</sup> EBs look similar. After 8 days, *Ldb1*<sup>-/-</sup> EBs lack erythroid clusters (gray arrows). (C) CFC assay with cell suspensions from *Ldb1*<sup>+/+</sup> and *Ldb1*<sup>-/-</sup> day 6 EBs. Primitive erythroid and macrophage colonies were able to grow from *Ldb1*<sup>+/+</sup> but not *Ldb1*<sup>-/-</sup> cultures. (D) CFC assay with cell suspensions from *Ldb1*<sup>+/+</sup> and *Ldb1*<sup>-/-</sup> day 6 EBs as well as *Ldb1*<sup>-/-</sup> EBs at day 6 expressing exogenous *Ldb1*. The colonies that formed were counted as primitive erythroid or macrophage colonies according to morphology and color. The figure shows that although *Ldb1* absence impairs the formation of primitive erythroid and macrophage colonies, this phenotype can be rescued with *Ldb1* expression. (E) FACS analysis of day 6 and day 8 *Ldb1*<sup>+/+</sup> and *Ldb1*<sup>-/-</sup> EBs. CD41<sup>+</sup> primitive erythroid progenitors are not present in the *Ldb1*<sup>-/-</sup> EBs that contain less than half the number of CD31<sup>+</sup> endothelial cells compared with the *Ldb1*<sup>+/+</sup> EBs. Cell suspensions were stained with either CD41-PE or CD31-FITC. CD41-PE<sup>+</sup> cells were detected through the F12 channel and CD31-FITC<sup>+</sup> cells were detected through the F11 channel. (F) FACS analysis of day 4 EBs. *Ldb1*<sup>-/-</sup> EBs contain approximately 50% fewer Fik1<sup>+</sup> BL-CFCs than *Ldb1*<sup>+/+</sup> EBs. (G) *Ldb1*<sup>+/+</sup> Fik1<sup>+</sup> BL-CFCs give fully-grown blast colonies but *Ldb1*<sup>-/-</sup> Fik1<sup>+</sup> BL-CFCs do not.

### *Ldb1*<sup>-/-</sup> EBs contain no erythroid and fewer endothelial progenitor cells

We additionally generated an *Ldb1*<sup>-/-</sup> ES cell line to carry out differentiation and molecular and functional studies in hemangioblast-equivalent cells. The second *Ldb1* locus allele in *Ldb1*<sup>-/-</sup> ES cells was deleted (supplemental Figure 2E) and the absence of *Ldb1* protein was confirmed by Western blotting and immunofluorescence (supplemental Figure 2F-G). The morphology and growth of *Ldb1*<sup>-/-</sup> ES cells appeared similar to normal ES cells (not shown and Li et al).<sup>11,17</sup> We then tested their differentiation potential into EBs. Because *Ldb1*<sup>+/-</sup> mice did not exhibit any phenotypic differences compared with *Ldb1*<sup>+/+</sup> mice, they were not used for further investigations. *Ldb1*<sup>+/+</sup> and *Ldb1*<sup>-/-</sup> EBs did not show any phenotypic differences at days 3 and 4 and appeared similar in size and structure (Figure 1B). However, after 8 days we observed a striking absence of erythroid clusters within the *Ldb1*<sup>-/-</sup> EBs (Figure 1B), correlating with the hematopoietic defect observed in the knock-out mouse. Of note, *Ldb1*<sup>-/-</sup> EBs survived at least until day 10 without apparent apoptosis but were more adherent than the wild-type ones. After 10 days the majority was found attached to the bottom of the

culture dish (not shown). CFC assays were performed to test the potential of *Ldb1*<sup>-/-</sup> EBs to give rise to primitive erythroid and macrophage colonies. Both bright-red primitive erythroid colonies and white macrophage colonies, present in *Ldb1*<sup>+/+</sup> day 6 EB cultures, were absent in the *Ldb1*<sup>-/-</sup> cultures. This defect was fully rescued by exogenous reexpression of *Ldb1* (Figure 1C-D), indicating that those effects are specifically caused by the absence of *Ldb1*. In addition, the presence of primitive erythroid progenitors was examined by flow cytometry using CD41 (integrin alpha-IIb) as marker.<sup>18</sup> *Ldb1*<sup>+/+</sup> EBs contained 2.6% and 12% of CD41<sup>+</sup> cells at days 6 and 8, respectively, whereas *Ldb1*<sup>-/-</sup> EBs did not contain any CD41<sup>+</sup> erythroid progenitor cells in accordance with the absence of primitive erythroid colonies in *Ldb1*<sup>-/-</sup> CFC cultures (Figure 1E). The presence of endothelial progenitors in day 6 and day 8 EBs was also examined using CD31 (PECAM-1) as a marker, because *Ldb1*<sup>-/-</sup> embryos exhibit a severe defect in vascular development.<sup>19</sup> Days 6 and 8 *Ldb1*<sup>+/+</sup> EBs contained 21% and 16% CD31<sup>+</sup> cells, respectively. These cells were also found to be present in *Ldb1*<sup>-/-</sup> EBs at the same time points but decreased to less than half when compared with the wild-type ones (Figure 1E).

**Table 1. Signaling pathways enriched in *Ldb1*<sup>+/+</sup> and *Ldb1*<sup>-/-</sup> derived Flk1<sup>+</sup> cells**

Pathways	Column A Signaling pathways enriched with genes expressed in Flk1 <sup>+</sup> cells	Column B Signaling pathways enriched with genes expressed in Flk1 <sup>+</sup> cells (and bound by <i>Ldb1</i> )	Column C Signaling pathways perturbed in <i>Ldb1</i> <sup>-/-</sup> Flk1 <sup>+</sup> cells	Column D Signaling pathways perturbed in <i>Ldb1</i> <sup>-/-</sup> Flk1 <sup>+</sup> cells (and bound by <i>Ldb1</i> ) (Set1*)	Column E Signaling pathways perturbed in <i>Ldb1</i> <sup>-/-</sup> Flk1 <sup>+</sup> cells (and not bound by <i>Ldb1</i> ) (Set3)
Focal adhesion	✓	✓	✓	✓	✓
Adherens junction	✓	✓	✓	✓	✓
Angiogenesis	✓	✓	✓	✓	✓
Colorectal cancer	✓	✓	✓	✓	✓
Hedgehog signaling pathway	✓	✓	✓	✓	✓
ErbB signaling pathway	✓	✓	✓	✓	✓
Insulin signaling pathway	✓	✓	✓	✓	✓
Integrin signaling pathway	✓	✓	✓	✓	✓
Leukocyte transendothelial migration	✓	✓	✓	✓	✓
Pathways in cancer	✓	✓	✓	✓	✓
MAPK signaling pathway	✓	✓	✓	✓	✓
Regulation of actin cytoskeleton	✓	✓	✓	✓	✓
WNT signaling pathway	✓	✓	✓	✓	✓
Acute myeloid leukemia	✓	✓	✓	✓	
Basal cell carcinoma		✓	✓	✓	
Interleukin signaling pathway	✓*	✓*	✓*	✓	
Melanoma	✓	✓	✓	✓	
T-cell-receptor signaling pathway	✓	✓	✓	✓	
VEGF signaling pathway	✓	✓	✓		✓
Apoptosis	✓	✓	✓		✓
Axon guidance	✓	✓	✓		✓
Chronic myeloid leukemia	✓	✓	✓		✓
PDGF signaling pathway	✓	✓	✓		✓
Small-cell lung cancer	✓	✓	✓		✓
EGF signaling pathway	✓*	✓	✓		✓
Endocytosis	✓	✓	✓		✓
Glioma	✓	✓	✓		✓
Neurotrophin signaling pathway	✓	✓	✓		✓
TGF-β signaling pathway	✓	✓	✓		✓
Prostate cancer	✓	✓	✓		
Pancreatic cancer	✓	✓	✓		
uCalpain and friends in Cell spread		✓	✓		
Bladder cancer	✓		✓		✓
Dopamine receptor-mediated signaling pathway	✓*		✓		✓
Tight junction	✓		✓		✓
Oxidative stress response	✓		✓		✓
Melanogenesis	✓		✓		
B-cell activation	✓		✓		
Telomeres, telomerase, cellular aging, and immortality	✓		✓		
Cell cycle	✓	✓		✓	
mTOR signaling pathway	✓	✓		✓	
Ras pathway	✓	✓			✓
Glutathione metabolism	✓				✓
Control of gene expression by vitamin D receptor	✓*	✓			
Aminoacyl-tRNA biosynthesis	✓	✓			
Amyotrophic lateral sclerosis	✓	✓			
B-cell-receptor signaling pathway	✓	✓			
Basal transcription factors	✓	✓			
Endometrial cancer	✓	✓			
Glyoxylate and dicarboxylate metabolism	✓	✓			
Heme biosynthesis	✓	✓			
Huntington disease	✓	✓			
Interferon-γ signaling pathway	✓	✓			

**Column A:** Signaling pathways enriched for genes expressed in Flk1<sup>+</sup> cells. **Column B:** Signaling pathways enriched for genes expressed in Flk1<sup>+</sup> cells and bound by *Ldb1*. **Column C:** Signaling pathways perturbed in *Ldb1*<sup>-/-</sup> Flk1<sup>+</sup> cells. **Column D:** Signaling pathways enriched with genes differentially expressed in *Ldb1*<sup>-/-</sup> Flk1<sup>+</sup> cells and bound by *Ldb1* (Set1\*). **Column E:** Signaling pathways enriched with genes differentially expressed in *Ldb1*<sup>-/-</sup> Flk1<sup>+</sup> cells and not bound by *Ldb1* (Set3). Signaling pathways were selected based on significance ( $P \leq .05$ ) unless stated otherwise.

\* $P = .07$  to  $.09$ .

Table 1. (continued)

Pathways	Column A Signaling pathways enriched with genes expressed in Fik1 <sup>+</sup> cells	Column B Signaling pathways enriched with genes expressed in Fik1 <sup>+</sup> cells (and bound by Ldb1)	Column C Signaling pathways perturbed in <i>Ldb1</i> <sup>-/-</sup> Fik1 <sup>+</sup> cells	Column D Signaling pathways perturbed in <i>Ldb1</i> <sup>-/-</sup> Fik1 <sup>+</sup> cells (and bound by Ldb1) (Set1*)	Column E Signaling pathways perturbed in <i>Ldb1</i> <sup>-/-</sup> Fik1 <sup>+</sup> cells (and not bound by Ldb1) (Set3)
JAK/STAT signaling pathway	✓	✓			
Lysosome	✓	✓			
Transcription regulation by bZIP transcription factor	✓	✓			
Adipocytokine signaling pathway	✓	✓			
Alzheimer disease	✓	✓			
Ubiquitin mediated proteolysis	✓	✓			
Non-small-cell lung cancer	✓	✓			
Nucleotide excision repair	✓	✓			
Oxidative phosphorylation	✓	✓			
p38 MAPK signaling pathway	✓	✓			
p53 signaling pathway	✓	✓			
Parkinson disease	✓	✓			
Proteasome	✓	✓			
Renal cell carcinoma	✓	✓			
Ribosome	✓	✓			
RNA degradation	✓	✓			
Spliceosome	✓	✓			
Apoptotic signaling in response to DNA damage	✓				
Arginine and proline metabolism	✓				
Base excision repair	✓				
Biosynthesis of unsaturated fatty acids	✓				
Chemokine signaling pathway	✓				
Chondroitin sulfate biosynthesis	✓				
Circadian clock system	✓				
Citrate cycle (TCA cycle)	✓				
CXCR4 signaling pathway	✓				
Cysteine and methionine metabolism	✓				
DNA replication	✓				
Dorsoventral axis formation	✓				
Endothelin signaling pathway	✓				
Fatty acid metabolism	✓				
Fc $\gamma$ R-mediated phagocytosis	✓				
fMLP-induced chemokine gene expression in HMC-1 cells	✓				
Fructose and mannose metabolism	✓				
Gap junction	✓				
General transcription regulation	✓				
Glycerophospholipid metabolism	✓				
Glycosylphosphatidylinositol-anchor biosynthesis	✓				
Gonadotropin-releasing hormone signaling pathway	✓				
HIV-1 Nef: negative effector of Fas and tumor necrosis factor	✓				
Homologous recombination	✓				
Hypoxia response via HIF activation	✓				
Influence of Ras and Rho proteins on G1 to S transition	✓				
Inositol phosphate metabolism	✓				
Keratan sulfate biosynthesis	✓				
Limonene and pinene degradation	✓				
Links between Pyk2 and MAP kinases	✓				
Long-term depression	✓				
Long-term potentiation	✓				
Lysine degradation	✓				

**Column A:** Signaling pathways enriched for genes expressed in Fik1<sup>+</sup> cells. **Column B:** Signaling pathways enriched for genes expressed in Fik1<sup>+</sup> cells and bound by Ldb1. **Column C:** Signaling pathways perturbed in *Ldb1*<sup>-/-</sup> Fik1<sup>+</sup> cells. **Column D:** Signaling pathways enriched with genes differentially expressed in *Ldb1*<sup>-/-</sup> Fik1<sup>+</sup> cells and bound by Ldb1 (Set1\*). **Column E:** Signaling pathways enriched with genes differentially expressed in *Ldb1*<sup>-/-</sup> Fik1<sup>+</sup> cells and not bound by Ldb1 (Set3). Signaling pathways were selected based on significance ( $P \leq .05$ ) unless stated otherwise.

\* $P = .07$  to  $.09$ .

**Table 1. (continued)**

Pathways	Column A Signaling pathways enriched with genes expressed in Flk1 <sup>+</sup> cells	Column B Signaling pathways enriched with genes expressed in Flk1 <sup>+</sup> cells (and bound by <i>Ldb1</i> )	Column C Signaling pathways perturbed in <i>Ldb1</i> <sup>-/-</sup> Flk1 <sup>+</sup> cells	Column D Signaling pathways perturbed in <i>Ldb1</i> <sup>-/-</sup> Flk1 <sup>+</sup> cells (and bound by <i>Ldb1</i> ) (Set1*)	Column E Signaling pathways perturbed in <i>Ldb1</i> <sup>-/-</sup> Flk1 <sup>+</sup> cells (and not bound by <i>Ldb1</i> ) (Set3)
Mismatch repair	✓				
N-glycan biosynthesis	✓				
Notch signaling pathway	✓				
One carbon pool by folate	✓				
Oocyte meiosis	✓				
Other glycan degradation	✓				
Phosphatidylinositol signaling system	✓				
Phospholipids as signaling intermediaries	✓				
Progesterone-mediated oocyte maturation	✓				
Propanoate metabolism	✓				
Purine metabolism	✓				
Pyrimidine metabolism	✓				
Pyruvate metabolism	✓				
Ras-signaling pathway	✓				
Regulation of eIF4e and p7 S6 kinase	✓				
RNA polymerase	✓				
Role of BRCA1, BRCA2, and ATR in cancer susceptibility	✓				
Role of mitochondria in apoptotic signaling	✓				
Selenoamino acid metabolism	✓				
Signaling of hepatocyte growth factor receptor	✓				
Skeletal muscle hypertrophy is regulated via AKT/mTOR pathway	✓				
SNARE interactions in vesicular transport	✓				
Steroid biosynthesis	✓				
Amino sugar and nucleotide sugar metabolism	✓				
Valine, leucine, and isoleucine degradation	✓				
Thyroid cancer	✓				

**Column A:** Signaling pathways enriched for genes expressed in Flk1<sup>+</sup> cells. **Column B:** Signaling pathways enriched for genes expressed in Flk1<sup>+</sup> cells and bound by *Ldb1*. **Column C:** Signaling pathways perturbed in *Ldb1*<sup>-/-</sup> Flk1<sup>+</sup> cells. **Column D:** Signaling pathways enriched with genes differentially expressed in *Ldb1*<sup>-/-</sup> Flk1<sup>+</sup> cells and bound by *Ldb1* (Set1\*). **Column E:** Signaling pathways enriched with genes differentially expressed in *Ldb1*<sup>-/-</sup> Flk1<sup>+</sup> cells and not bound by *Ldb1* (Set3). Signaling pathways were selected based on significance ( $P \leq .05$ ) unless stated otherwise.

\* $P = .07$  to  $.09$ .

### *Ldb1*<sup>-/-</sup> EBs do not give rise to blast colonies

We then investigated whether BL-CFCs, the in vitro hemangioblast equivalent, were present in the *Ldb1*<sup>-/-</sup> EBs. Day 4 BL-CFCs were isolated using the VEGF receptor *Flk1* as a marker (supplemental Figure 1). Flk1<sup>+</sup> BL-CFCs were present in both *Ldb1*<sup>+/+</sup> and *Ldb1*<sup>-/-</sup> EBs; however, a striking difference was observed because *Ldb1*<sup>-/-</sup> EBs repeatedly contained half the number of Flk1<sup>+</sup> cells (Figure 1F). In three independent experiments, BL-CFC assays also showed that blast colonies did form in the wild-type but not in the knockout cultures (Figure 1G). In conclusion, BL-CFCs are present in *Ldb1*<sup>-/-</sup> EBs but fail to generate fully-grown blast colonies. *Ldb1*<sup>-/-</sup> Flk1<sup>+</sup> cells eventually die in culture (not shown).

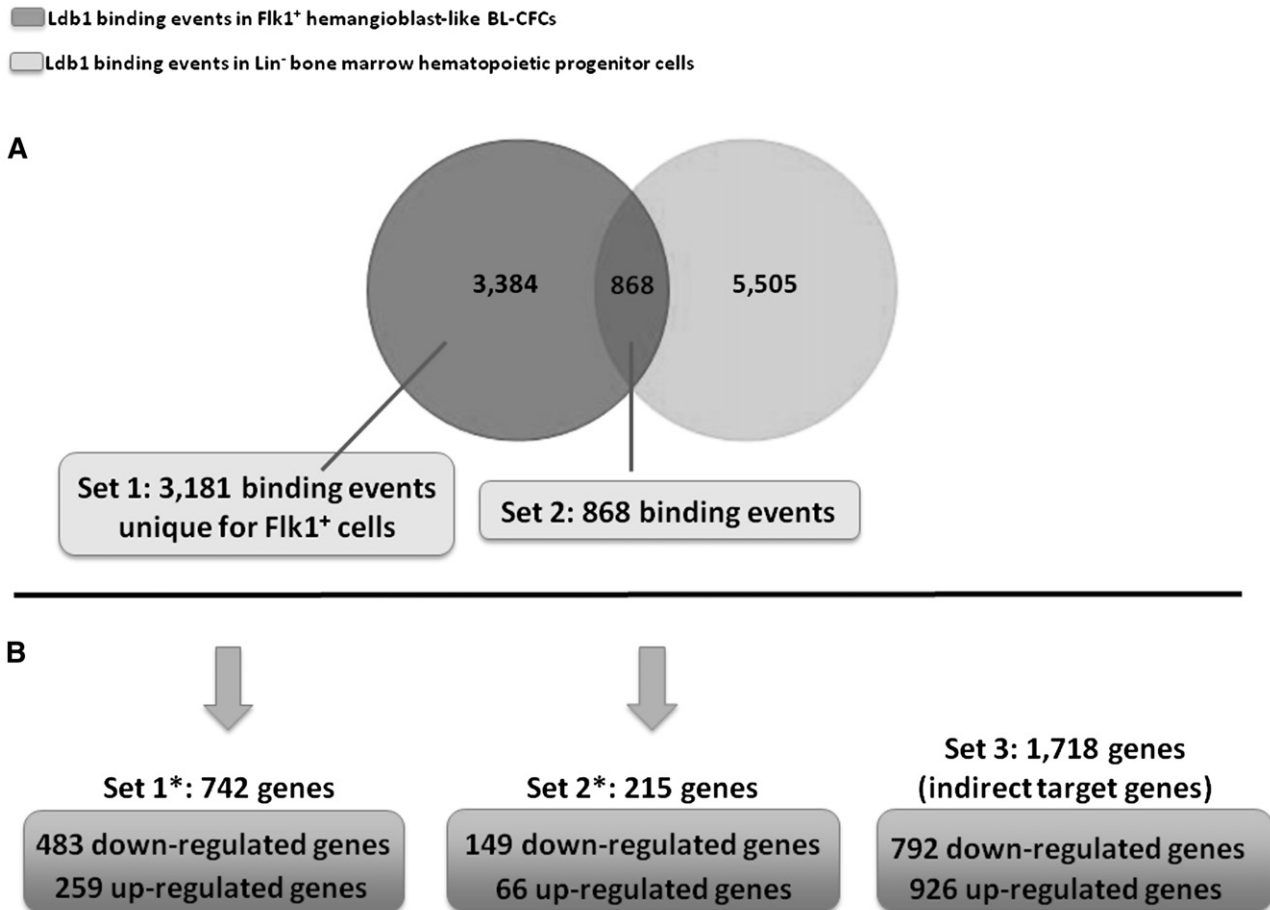
### Transcriptome analysis identifies the genes and associated signaling pathways active in BL-CFCs

To gain insight into the gene expression network and signaling pathways involved in the maintenance of the hemangioblast in vitro-equivalent cells, transcriptome analysis of Flk1<sup>+</sup> BL-CFCs by RNA sequencing showed 12 468 expressed genes. Pathway enrichment analysis of the expressed genes revealed the signaling pathways potentially active in these progenitor cells (Table 1, Column A).

### *Ldb1* plays a specific and major role in the BL-CFCs' gene regulatory network

To identify the direct genomic targets of *Ldb1* in Flk1<sup>+</sup> BL-CFCs, ChIP sequencing in sorted Flk1<sup>+</sup> cells showed 4252 significant *Ldb1* binding peaks. Of all genes expressed in Flk1<sup>+</sup> cells, more than one quarter, or 3264, genes contain *Ldb1* peak(s) in their vicinity. The group of *Ldb1*-bound genes were found to participate in approximately half of the signaling pathways active in BL-CFCs (Table 1, Columns A vs B).

We compared the *Ldb1* ChIP-sequencing dataset of primitive Flk1<sup>+</sup> BL-CFCs to the Li et al dataset in more committed adult hematopoietic Lin<sup>-</sup> bone marrow progenitors.<sup>11</sup> This revealed that the majority of the 4252 *Ldb1*-binding events in Flk1<sup>+</sup> cells is specific to these early progenitor cells (79.6%, or 3384 binding events) (Figure 2A). Of note, among those specific binding events, a few (respectively, 35 and 168 events) have also been detected in previously published *Ldb1* ChIP-sequencing datasets from fetal liver or definitive erythroleukemic cells.<sup>15</sup> We therefore excluded those 203 binding events from the 3384 Flk1<sup>+</sup>-specific events for further investigation. The resulting 3181 Flk1<sup>+</sup>-specific binding events are referred to as "Set1" and will be compared with "Set2", the common binding events between Flk1<sup>+</sup> cells and



**Figure 2. Genome-wide Ldb1 binding in BL-CFCs vs adult hematopoietic progenitor cells and transcriptional function of *Ldb1* on BL-CFC gene expression.** (A) Venn diagram comparing Ldb1-binding events in Flk1<sup>+</sup> BL-CFCs vs Lin<sup>-</sup> bone marrow hematopoietic progenitor cells.<sup>11</sup> (B) Correlative crossing between Ldb1 ChIP-sequencing dataset in BL-CFCs and gene expression dataset of *Ldb1*<sup>-/-</sup> vs *Ldb1*<sup>+/-</sup> BL-CFCs.

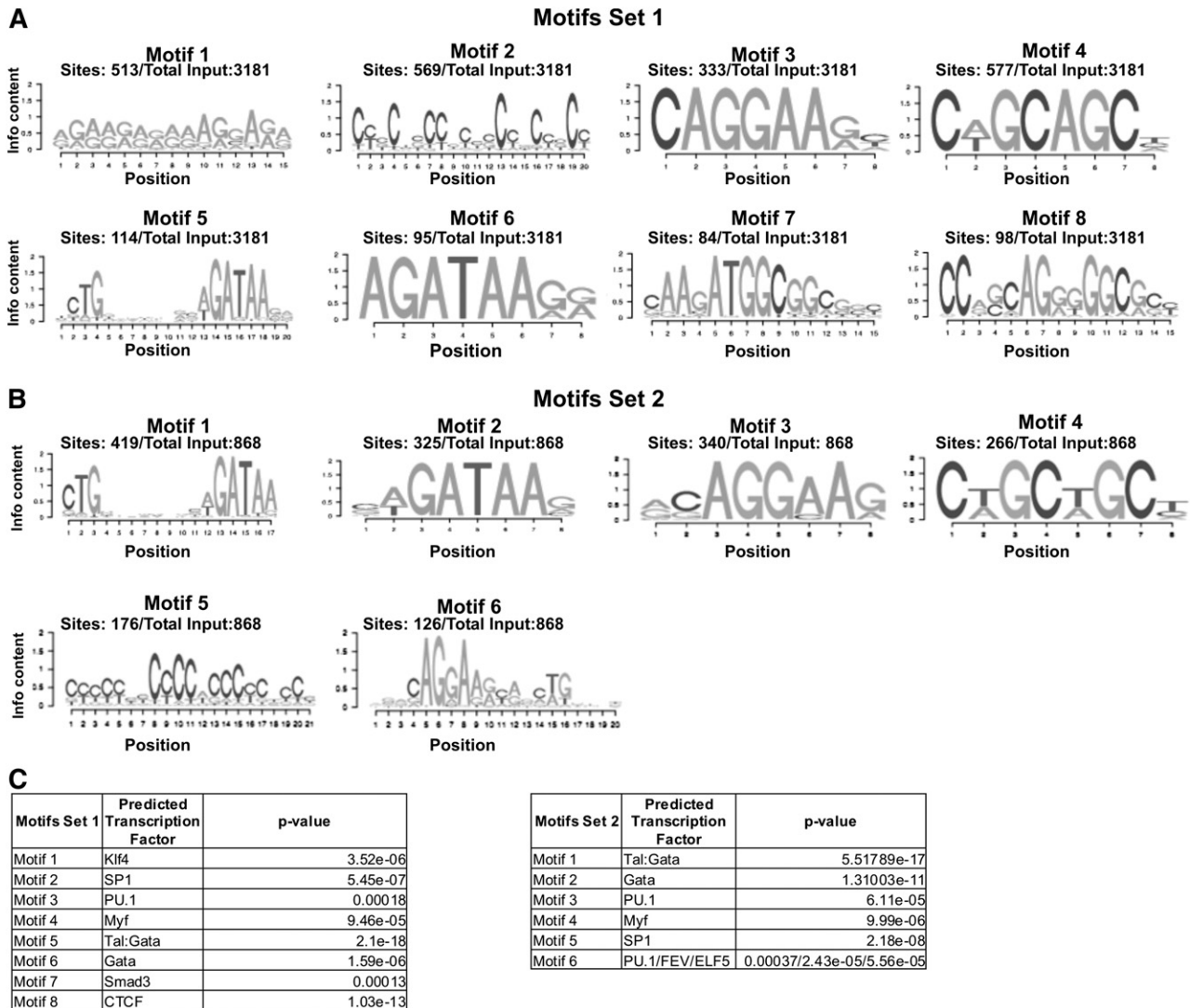
Lin<sup>-</sup> bone marrow cells (20.4% or 868 Ldb1-binding events in Flk1<sup>+</sup> cells).

We then performed a functional study to identify genes and associated signaling pathways regulated by *Ldb1* in BL-CFCs. Day 4 *Ldb1*<sup>-/-</sup> Flk1<sup>+</sup> cells were used for microarray and RNA sequencing. The corresponding gene expression profiles were compared with the profile of wild-type Flk1<sup>+</sup> cells. Of the 12 468 genes found to be expressed in Flk1<sup>+</sup> cells, 2675 genes were identified as differentially expressed between the *Ldb1*<sup>+/-</sup> and the *Ldb1*<sup>-/-</sup> Flk1<sup>+</sup> cells (supplemental Table 1). Of those, 1424 genes were downregulated (53.23%) and 1251 were upregulated (46.77%). The differentially expressed genes were classified into 3 independent sets: Set1\*, Set2\*, and Set3, respectively, depending on whether they were included in the Ldb1-bound genes of Set1, the Ldb1-bound genes of Set2, or they were unbound in Flk1<sup>+</sup> cells (Figure 2B). Interestingly, the majority of *Ldb1* direct targets (Set1\* and Set2\*) were observed downregulated genes; 65% (483 genes) were downregulated and 35% (259 genes) were upregulated in Set1\*, and 69.3% (149 genes) were downregulated and 30.7% (66 genes) were upregulated in Set2\*. This trend is absent in indirect target genes (Set3), which present 46.1% (792 genes) and 53.9% (926 genes) of down- and upregulated genes, respectively. The fact that the majority of direct target genes is downregulated as a result of *Ldb1* deletion shows that *Ldb1* primarily acts as a positive transcriptional regulator in BL-CFCs. However, the one-third of upregulated genes in this group suggests an additional role

for Ldb1 complexes as repressors of transcription. A search for enriched DNA-binding motifs carried out on sequences targeted by Ldb1 in Set1 revealed the known E-box(Tal1):Gata motif (motif 5) in only 3.6% of peaks (114 of 3181) (Figure 3A,C). The motifs found with the highest frequency were those associated with Klf transcription factors (motif 1: 513 peaks out of 3181 or 16%), SP1 (motif 2: 569 peaks or 18%), and PU.1 (motif 3: 333 peaks or 10%). In addition, 3% of Ldb1 peaks from Set1 are associated with a CTCF motif (motif 8: 98 of 3181 peaks) (Figure 3A,C). Conversely, in Set2 peaks (common with adult bone marrow progenitor peaks), a prominent E-box:Gata motif was found (motif 1: 419 peaks of 868 or 48%) as described,<sup>11,15</sup> and no CTCF motif was detected (Figure 3B,C). This suggests that Ldb1 forms different complexes in primitive Flk1<sup>+</sup> cells, targeting different regulatory sites. Alternatively, Ldb1 complex activity may be regulated by different cofactors in these cells as suggested by the differences in recognition motifs, potentially explaining the different repressing and activating transcriptional functions of *Ldb1* in BL-CFCs.

#### ***Ldb1* preferentially controls developmental genes in BL-CFCs and regulates a wide range of important signaling pathways**

Among the misregulated genes in *Ldb1*<sup>-/-</sup> Flk1<sup>+</sup> BL-CFCs directly bound by Ldb1 (Set1\*), we found genes previously shown to participate in the regulation of mouse embryonic development and hematopoiesis such as *Gata2*,<sup>20,21</sup> *Gata1*,<sup>22</sup> *Runx1*,<sup>23</sup> *Fli1*,<sup>24</sup>

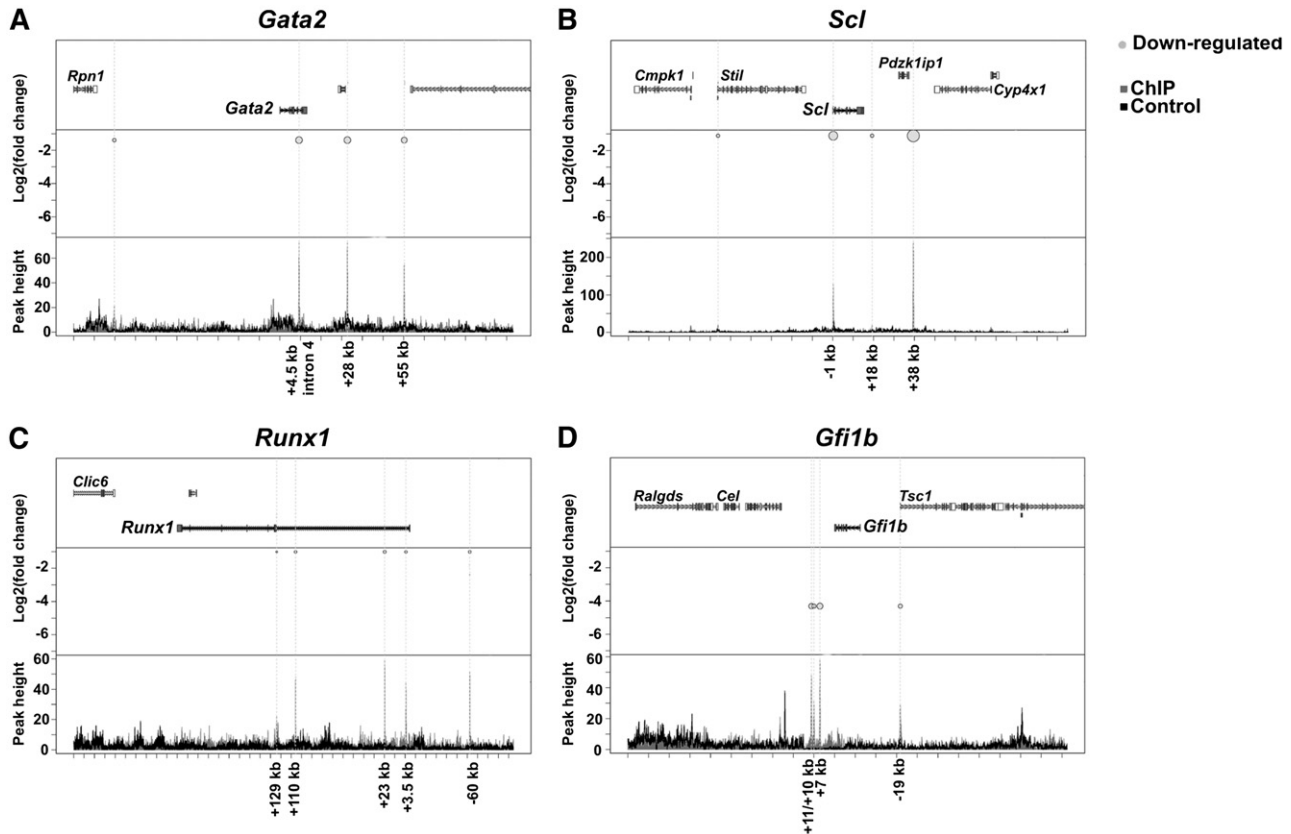


**Figure 3. Enrichment in DNA-binding motifs within BL-CFC *Ldb1* binding peaks.** (A) Most prevalent motifs enriched within *Ldb1*-binding peaks of Set1. (B) Most prevalent motifs enriched within *Ldb1*-binding peaks of Set2. Frequency of each motif within the total number of studied binding peaks is given. (C) Each identified motif has been associated with one or more transcription factors found in the JASPAR database, and the significance of this association is determined by the *P* value. Each factor represents a family of transcription factors binding the same motif.

*Lyl1*,<sup>25</sup> *Id2*, *Id4*,<sup>26</sup> *Klf4*,<sup>27</sup> *Gfi1b*,<sup>28</sup> *Cbfa2t3/Eto2*,<sup>29</sup> *Myb*,<sup>30</sup> *Dkk1*, *Sfrp1*,<sup>31,32</sup> *Meis1*,<sup>33</sup> *Raldh2*,<sup>34</sup> and *Fgfr2*.<sup>35</sup> The changes observed in some of those essential genes were confirmed by real-time polymerase chain reaction (supplemental Figure 3). Of interest is the downregulation of *Stat5a* and *Sox7*, *Sox17*, and *Sox18* all having been reported as hematopoietic regulators.<sup>36-38</sup> Figure 4 shows 4 examples of hematopoietic-essential Set1\* genes. Because BL-CFCs can differentiate into both the hematopoietic and endothelial lineages, we further analyzed the hematopoietic- and endothelial-specific genes.<sup>39</sup> Figure 5 shows that the majority of these is downregulated in the absence of *Ldb1*, illustrating the role of *Ldb1* as an activator of transcription and to a lesser extent as a repressor in hematopoiesis and endothelial development (like the larger group of Set1\* containing those genes, see Figure 2B).

To decipher the essential functions of *Ldb1* in the maintenance/ differentiation of BL-CFCs, we performed a pathway enrichment analysis on the total number of genes misregulated in Flk1<sup>+</sup> cells in the absence of *Ldb1* (Table 1, Column C). Approximately one-third (37 of 127) of the pathways enriched for genes expressed in

Flk1<sup>+</sup> cells are misregulated in the *Ldb1*<sup>-/-</sup> Flk1<sup>+</sup> cells. To distinguish between direct and indirect functions of *Ldb1*, we carried out in parallel pathway enrichment analyses on the *Ldb1* direct-target genes (Set1\*; Table 1, Column D) and the indirect *Ldb1*-regulated genes (Set3; Table 1, Column E). Approximately half of the misregulated pathways in the *Ldb1*<sup>-/-</sup> Flk1<sup>+</sup> cells were directly targeted by *Ldb1* (Table1, Column C vs Column D). Among these, acute myeloid leukemia, basal cell carcinoma, interleukin signaling pathway, melanoma, and T-cell receptor signaling pathways were found. Four examples of perturbed signaling pathways are provided, illustrating how the genes are affected by the absence of *Ldb1* (supplemental Figures 4-7). Signaling pathways such as WNT (Wingless), MAPK (mitogen-activated protein kinase), hedgehog, ErbB, focal adhesion, integrin, insulin, and angiogenesis were commonly enriched for both direct and indirect genes of Set1\* and Set3. Not unexpectedly, we also found myeloid and lymphoid specific pathways in that context. In contrast, the VEGF-, epidermal growth factor (EGF)-, platelet-derived growth factor (PDGF), and endocytosis signaling



**Figure 4.** Bubble plot representation of *Ldb1*-binding peaks around 4 selected hematopoiesis-specific genes downregulated in the *Ldb1*<sup>-/-</sup> BL-CFCs. Each of the figures (A-D) are divided into three panels. The upper panel shows the studied gene and the neighboring genomic genes. The middle panel shows the differential expression (presented as log<sub>2</sub>fold change on the y-axis) of the studied gene in *Ldb1*<sup>-/-</sup> Flk1<sup>+</sup> cells in correlation with the *Ldb1*-binding peaks identified within or around the gene body. The light gray circles (allocated to binding peaks) represent downregulation of gene expression. On the bottom panel, ChIP binding peak heights are represented on the y-axis and genome location on the x-axis. The dark gray color represents *Ldb1* ChIP peaks and the black color represents IgG ChIP peaks (used as control).

pathways were enriched only in the indirect Set3 genes compared with Set1\*.

In conclusion, the large number of pathways that are (potentially) affected in the *Ldb1*<sup>-/-</sup> Flk1<sup>+</sup> BL-CFCs easily explains the severe phenotype of the *Ldb1*<sup>-/-</sup> embryos. Importantly, the fact that some Flk1<sup>+</sup> cells still emerge during *Ldb1*<sup>-/-</sup> ES cell differentiation suggests that most of these pathways may play some role in hemangioblast formation but become essential at subsequent developmental stages before the hematopoietic and endothelial lineages diverge.

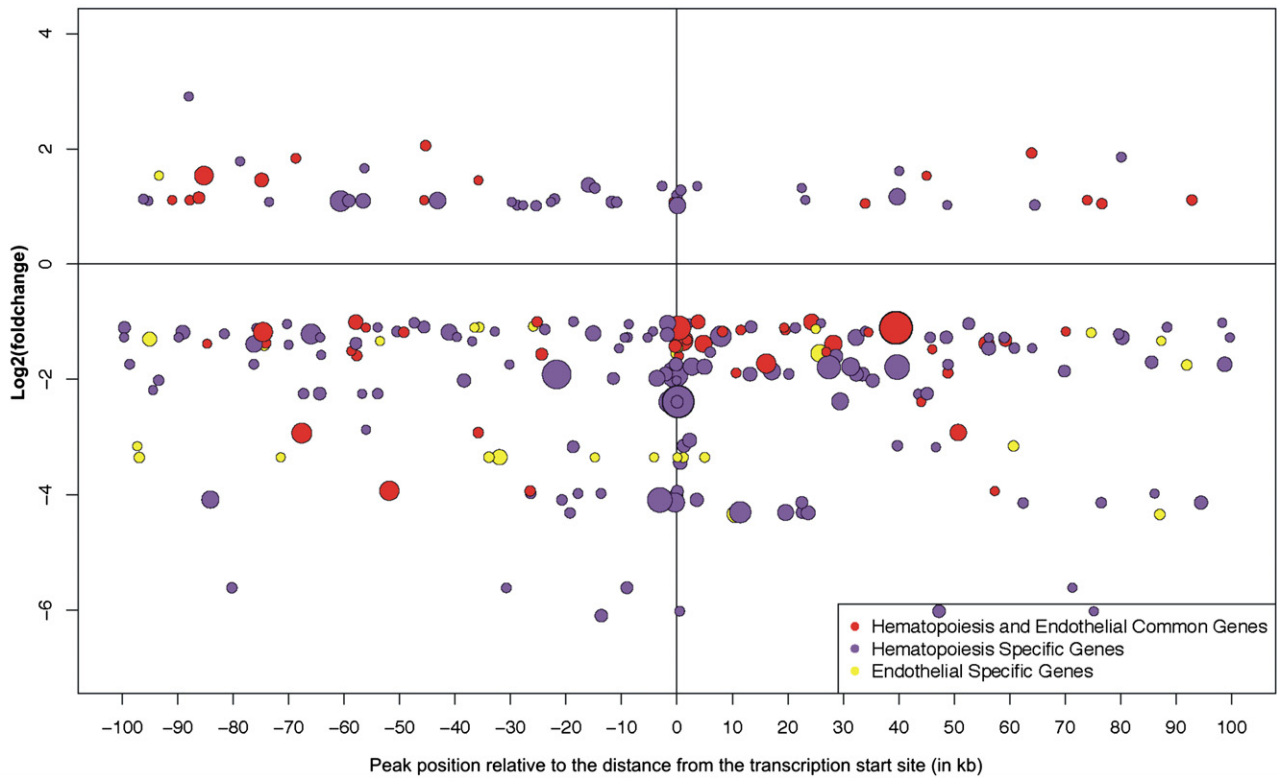
## Discussion

Primitive hematopoiesis begins in the yolk-sac after the migration of *brachyury* expressing mesodermal cells through the primitive streak and their differentiation toward hematopoietic or endothelial precursors that collectively form blood islands. Hematopoietic precursors give rise to primitive erythroblasts and endothelial precursors to the vasculature. Both are absent in *Ldb1*<sup>-/-</sup> embryo yolk-sacs, questioning the role of *Ldb1* in this process.

Many of the misregulated factors identified in the gene-expression profiling of Flk1<sup>+</sup> BL-CFCs from day 4 *Ldb1*<sup>+/+</sup> and *Ldb1*<sup>-/-</sup> EBs act in the nuclear “response” of well-known signaling pathways. WNT signaling has a positive role in regulating primitive hematopoiesis.<sup>32,40</sup> Addition of the inhibitor Dkk1 (downregulated

in the *Ldb1*<sup>-/-</sup> Flk1<sup>+</sup> cells) blocks the pathway, reducing the potential of BL-CFCs to generate colonies.<sup>31</sup> Both WNT and Notch signaling pathways are involved in the differentiation of hemangioblast cells toward the primitive erythroid lineage. WNT signaling is active in Flk1<sup>+</sup> BL-CFCs during the first hours of differentiation toward blast colonies, whereas Notch signaling remains inactive through *Numb* inhibition. Between 12 and 24 hours of differentiation, the inhibitory effect exerted on Notch signaling is reduced and its activation leads to the expression of WNT inhibitors blocking the WNT pathway.<sup>31</sup> Both pathways were found to be active in Flk1<sup>+</sup> cells; however, only WNT signaling was perturbed in *Ldb1*<sup>-/-</sup> Flk1<sup>+</sup> cells. We propose that WNT misregulation can be attributed to changes in expression of genes bound by *Ldb1*. In *Drosophila*, the importance of interplay among Notch, fibroblast growth factor (FGF), MAPK, and EGFR signaling pathways has been documented as a requirement for blood specification,<sup>41</sup> with the last 2 pathways affected by the deletion of *Ldb1* in Flk1<sup>+</sup> cells.

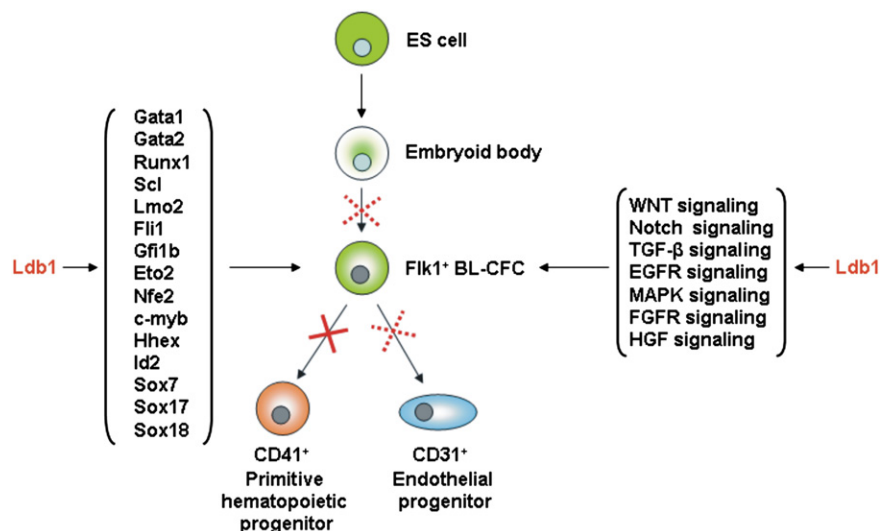
Changes in gene expression of the WNT signaling-associated transcription factors *Lef1*, *Tcf7*, and *Tcf7l1* in *Ldb1*<sup>-/-</sup> Flk1<sup>+</sup> cells confirm the importance of this pathway in early hematopoiesis. The downregulation of *Etv2/Er71* in knockout cells leads to the same conclusion because it acts downstream of not only the WNT but also the bone morphogenic protein (BMP) and Notch pathways.<sup>42,43</sup> Also, expression of the transforming growth factor-beta (TGF-β) signaling receptors, endoglin and Alk-1 (Acvr1k1), was reduced in *Ldb1*<sup>-/-</sup> Flk1<sup>+</sup> cells. ES cell knockout and rescue experiments showed that these receptors are important for hemangioblast



**Figure 5. Bubble plot representation of *Ldb1*-binding peaks around differentially regulated developmental hematopoietic/endothelial genes in *Ldb1*<sup>-/-</sup> BL-CFCs.** Each bubble in the plot represents one *Ldb1*-binding peak allocated to a hematopoietic-specific gene (*purple bubble*), an endothelial-specific gene (*yellow bubble*), or a gene involved in both hematopoietic and endothelial development (*red bubble*). The distance of each binding peak relative to a transcription start site of each gene is represented on the x-axis, whereas changes in gene expression in the *Ldb1*<sup>-/-</sup> vs *Ldb1*<sup>+/+</sup> Flk1<sup>+</sup> cells are represented on the y-axis as the log2fold change. The height of the binding signal/peak is represented by the diameter of the bubble. Hematopoietic- and endothelial-specific genes were identified through the use of IPA (Ingenuity Systems, www.ingenuity.com) and showed a 13.67% (29 of 212 genes) overlap, with the subset of endothelial genes identified through the study of Takase et al.<sup>39</sup> The lists of hematopoietic- and endothelial-specific genes, as well as the common hematopoietic/endothelial genes, used to generate the plot are provided in supplemental Table 2.

development and primitive hematopoiesis.<sup>44</sup> Recently, *Ldb1* has been implicated in cell migration and focal adhesion through an interaction with the Ste20-like kinase (SLK), a microtubule-associated protein necessary for migration.<sup>45</sup> Our data show that expression of a number of focal adhesion proteins is affected, although SLK did not appear to change. Among the misregulated genes in *Ldb1*<sup>-/-</sup> Flk1<sup>+</sup> BL-CFCs, we found *Stat5a*, *Sox7*, *Sox17*,

and *Sox18*. Interestingly, *Stat5a* overexpression in differentiating ES cells leads to an increase in hematopoietic progenitors.<sup>36</sup> *Sox7*, *Sox18*, and *Sox17* participate in different stages of hematopoietic development in the mouse embryo, with *Sox7* and *Sox18* being involved at the earliest stages of yolk-sac hematopoiesis and *Sox17* participating at later stages with the emergence of long-term repopulating hematopoietic stem cells.<sup>37,38</sup>



**Figure 6. Speculative model of *Ldb1* function in hemangioblast cells.** Schematic representation of *Ldb1* functions in the hemangioblast based on whole-genome and transcriptome analyses, revealing *Ldb1* involvement in the regulation of key hematopoietic gene expression and essential developmental signaling pathways.

*Ldb1* acts in a core complex with the essential hematopoietic regulators *Scl*, *Lmo2*, and *Gata1/Gata2* and associates with other essential factors such as *Runx1*.<sup>14,15</sup> When *Scl* is absent, primitive hematopoiesis is impaired and hematopoietic colonies are absent in culture, similar to *Ldb1*<sup>-/-</sup> embryo phenotype.<sup>20,46,47</sup> In vitro generation of *Scl*<sup>-/-</sup> EBs further showed that this factor is dispensable for hemangioblast generation, but is essential for its commitment toward hematopoietic and endothelial lineages.<sup>48</sup> *Gata1*-deficient embryos fail to generate erythroid cells, but *Gata1*-null ES cells can form other hematopoietic lineages.<sup>49,50</sup> *Gata2* deficiency shows reduced yolk-sac hematopoiesis and reduced number of ES cell-derived colonies. Finally, *Lmo2* absence results in a phenotype similar to that of *Scl* and *Gata2*, although macrophage colonies were still present in colony assays.<sup>47</sup> Our data show that all of these factors are regulated by *Ldb1*, placing it as a key regulator of the transcription factor network at the origin of the hematopoietic system. Accordingly, *Ldb1* deletion in the mouse results in a more severe hematopoietic phenotype than that observed with the factors mentioned before. The additional defect observed in endothelial development can also be explained by the EB results. There are still some CD31<sup>+</sup> endothelial cells in the *Ldb1*<sup>-/-</sup> EBs, but their number is severely reduced. We conclude that the defect in primitive hematopoiesis in the absence of *Ldb1* occurs at a stage in development before the hematopoietic and endothelial lineages diverge, i.e., *Ldb1* is involved in the proliferation and differentiation of Flk1<sup>+</sup> BL-CFCs, resulting in half the number of BL-CFCs that do not develop into blast colonies when compared with normal.

It is not yet clear how the hemangioblast develops from the embryonic mesoderm and how differentiation into hematopoietic and endothelial cells is regulated. Our data show that this must be a process orchestrated by a number of signal transduction pathways and transcription factors, many of which are directly or indirectly affected by the loss of *Ldb1*. One of the best-studied transcription factors in hematopoietic development, *Runx1*, is affected by the absence of *Ldb1*. It is expressed at low levels after the first 24 hours of blast colony formation and increases as the first hematopoietic progenitors of the erythroid and macrophage lineages emerge.<sup>31</sup> Although *Runx1*<sup>-/-</sup> blast colonies and primitive hematopoietic colonies are still able to grow,<sup>23</sup> its absence results in the emergence of fewer colonies from EBs.<sup>31</sup> Thus, downregulation of *Runx1* in the *Ldb1*<sup>-/-</sup> EBs would be yet another cause of the decrease seen in the number of BL-CFCs. A large number of key hematopoietic transcription factors is misregulated in the absence of *Ldb1*, showing that this factor is critically required to properly orchestrate the gene expression network of hemangioblasts and their progeny (Figure 6).

A number of factors are also upregulated, and it is interesting to note that expression of the mesodermal marker *brachyury* in *Ldb1*<sup>-/-</sup> BL-CFCs and *Ldb1*<sup>-/-</sup> EBs is upregulated (data not shown). *Brachyury* expression is lost within the first 24 hours of blast colony formation<sup>31</sup> and our data show that it is suppressed by *Ldb1*. The *brachyury* upregulation also suggests that *Ldb1*<sup>-/-</sup>

BL-CFCs have not yet lost their mesodermal identity/properties and are therefore unable to differentiate into blast colonies.

Finally, our data also show that a number of genes involved in cardiovascular development are affected, suggesting that *Ldb1* is also important in cardiovascular development, presumably in complex with the cardiac Gata factors.

In summary, *Ldb1* was identified as an essential regulator of mouse hemangioblast proliferation and differentiation. The severity of the hematopoietic phenotype is the result of a decreased number of hemangioblast cells and their inability to differentiate further down the hematopoietic and endothelial lineages. The expression of essential transcription factors is directly affected by *Ldb1*, revealing its crucial role in the early hematopoietic/endothelial regulatory networks (Figure 6). In addition, the identification of *Ldb1* target genes in Flk1<sup>+</sup> cells reveals a number of novel pathways contributing to hematopoietic/endothelial development and provides better understanding of the early developmental steps of these lineages.

## Acknowledgments

The authors thank the members of the Grosveld Laboratory for technical help and discussion. Cell sorting was done by Reinier van der Linden.

This work was supported by NWO (NL), the Dutch Academy of Sciences (KNAW), the EU (the integrated projects EUTRACC and SyBoss), and the European People Marie Curie actions Program (Marie Curie European Reintegration Grants ERG, Call: FP7-PEOPLE-2010-RG).

## Authorship

Contribution: A. Mylona, C.A.-S., and F.G. designed the research. A. Mylona, C.A.-S., A. Martella, E.S., and R.J. carried out the research. C.K. carried out Illumina sequencing. S.T. and J.H. performed bioinformatics analyses. W.v.I. and B.L. supervised Illumina data processing and bioinformatics analyses. A. Mylona, C.A.-S., E.S., S.T., and F.G. wrote the manuscript.

Conflict-of-interest disclosure: The authors declare no competing financial interests.

The current affiliation for A. Mylona is the Department of Hematology, Erasmus MC, Rotterdam, The Netherlands.

Correspondence: Frank Grosveld, Department of Cell Biology, Erasmus MC, Dr. Molenwaterplein 50, 3065 GE, Rotterdam, The Netherlands; e-mail: f.grosveld@erasmusmc.nl; correspondence for computational biology: Boris Lenhard, Imperial College London, London SW7 2AZ, United Kingdom; e-mail: b.lenhard@imperial.ac.uk.

## References

- Baron MH. Early patterning of the mouse embryo: implications for hematopoietic commitment and differentiation. *Exp Hematol*. 2005;33(9):1015-1020.
- Xiong JW. Molecular and developmental biology of the hemangioblast. *Dev Dyn*. 2008;237(5):1218-1231.
- Huber TL, Kouskoff V, Fehling HJ, et al. Haemangioblast commitment is initiated in the primitive streak of the mouse embryo. *Nature*. 2004;432(7017):625-630.
- Kallianpur AR, Jordan JE, Brandt SJ. The SCL/TAL-1 gene is expressed in progenitors of both the hematopoietic and vascular systems during embryogenesis. *Blood*. 1994;83(5):1200-1208.
- Nishikawa SI, Nishikawa S, Hirashima M, et al. Progressive lineage analysis by cell sorting and culture identifies FLK1+VE-cadherin+ cells at a diverging point of endothelial and hemopoietic lineages. *Development*. 1998;125(9):1747-1757.
- Costa G, Kouskoff V, Lacaud G. Origin of blood cells and HSC production in the embryo. *Trends Immunol*. 2012;33(5):215-223.
- Lacaud G, Keller G, Kouskoff V. Tracking mesoderm formation and specification to the hemangioblast in vitro. *Trends Cardiovasc Med*. 2004;14(8):314-317.

8. Shalaby F, Rossant J, Yamaguchi TP, et al. Failure of blood-island formation and vasculogenesis in Flk-1-deficient mice. *Nature*. 1995;376(6535):62-66.
9. Choi K. The hemangioblast: a common progenitor of hematopoietic and endothelial cells. *J Hematother Stem Cell Res*. 2002;11(1):91-101.
10. Keller GM. In vitro differentiation of embryonic stem cells. *Curr Opin Cell Biol*. 1995;7(6):862-869.
11. Li L, Jothi R, Cui K, et al. Nuclear adaptor *Ldb1* regulates a transcriptional program essential for the maintenance of hematopoietic stem cells. *Nat Immunol*. 2011;12(2):129-136.
12. Li L, Lee JY, Gross J, et al. A requirement for Lim domain binding protein 1 in erythropoiesis. *J Exp Med*. 2010;207(12):2543-2550.
13. Mukhopadhyay M, Teufel A, Yamashita T, et al. Functional ablation of the mouse *Ldb1* gene results in severe patterning defects during gastrulation. *Development*. 2003;130(3):495-505.
14. Meier N, Krpic S, Rodriguez P, et al. Novel binding partners of *Ldb1* are required for haematopoietic development. *Development*. 2006;133(24):4913-4923.
15. Soler E, Andrieu-Soler C, de Boer E, et al. The genome-wide dynamics of the binding of *Ldb1* complexes during erythroid differentiation. *Genes Dev*. 2010;24(3):277-289.
16. Soler E, Andrieu-Soler C, Boer E, et al. A systems approach to analyze transcription factors in mammalian cells. *Methods*. 2011;53(2):151-162.
17. Song SH, Kim A, Ragoczy T, et al. Multiple functions of *Ldb1* required for beta-globin activation during erythroid differentiation. *Blood*. 2010;116(13):2356-2364.
18. Ferkowicz MJ, Starr M, Xie X, et al. CD41 expression defines the onset of primitive and definitive hematopoiesis in the murine embryo. *Development*. 2003;130(18):4393-4403.
19. Baldwin HS, Shen HM, Yan HC, et al. Platelet endothelial cell adhesion molecule-1 (PECAM-1/CD31): alternatively spliced, functionally distinct isoforms expressed during mammalian cardiovascular development. *Development*. 1994;120(9):2539-2553.
20. Tsai FY, Keller G, Kuo FC, et al. An early haematopoietic defect in mice lacking the transcription factor GATA-2. *Nature*. 1994;371(6494):221-226.
21. Tsai FY, Orkin SH. Transcription factor GATA-2 is required for proliferation/survival of early hematopoietic cells and mast cell formation, but not for erythroid and myeloid terminal differentiation. *Blood*. 1997;89(10):3636-3643.
22. Weiss MJ, Keller G, Orkin SH. Novel insights into erythroid development revealed through in vitro differentiation of GATA-1 embryonic stem cells. *Genes Dev*. 1994;8(10):1184-1197.
23. Lacaud G, Gore L, Kennedy M, et al. *Runx1* is essential for hematopoietic commitment at the hemangioblast stage of development in vitro. *Blood*. 2002;100(2):458-466.
24. Liu F, Walmsley M, Rodaway A, et al. *Fli1* acts at the top of the transcriptional network driving blood and endothelial development. *Curr Biol*. 2008;18(16):1234-1240.
25. Capron C, Lécluse Y, Kaushik AL, et al. The SCL relative LYL-1 is required for fetal and adult hematopoietic stem cell function and B-cell differentiation. *Blood*. 2006;107(12):4678-4686.
26. Nogueira MM, Mitjavila-Garcia MT, Le Pesteur F, et al. Regulation of *Id* gene expression during embryonic stem cell-derived hematopoietic differentiation. *Biochem Biophys Res Commun*. 2000;276(2):803-812.
27. Gardiner MR, Gongora MM, Grimmond SM, et al. A global role for zebrafish *klf4* in embryonic erythropoiesis. *Mech Dev*. 2007;124(9-10):762-774.
28. Saleque S, Cameron S, Orkin SH. The zinc-finger proto-oncogene *Gfi-1b* is essential for development of the erythroid and megakaryocytic lineages. *Genes Dev*. 2002;16(3):301-306.
29. Goardon N, Lambert JA, Rodriguez P, et al. ETO2 coordinates cellular proliferation and differentiation during erythropoiesis. *EMBO J*. 2006;25(2):357-366.
30. Mucenski ML, McLain K, Kier AB, et al. A functional *c-myc* gene is required for normal murine fetal hepatic hematopoiesis. *Cell*. 1991;65(4):677-689.
31. Cheng X, Huber TL, Chen VC, et al. *Numb* mediates the interaction between *Wnt* and *Notch* to modulate primitive erythropoietic specification from the hemangioblast. *Development*. 2008;135(20):3447-3458.
32. Nostro MC, Cheng X, Keller GM, et al. *Wnt*, *activin*, and *BMP* signaling regulate distinct stages in the developmental pathway from embryonic stem cells to blood. *Cell Stem Cell*. 2008;2(1):60-71.
33. Pillay LM, Forrester AM, Erickson T, et al. The *Hox* cofactors *Meis1* and *Pbx* act upstream of *gata1* to regulate primitive hematopoiesis. *Dev Biol*. 2010;340(2):306-317.
34. Goldie LC, Lucitti JL, Dickinson ME, et al. Cell signaling directing the formation and function of hemogenic endothelium during murine embryogenesis. *Blood*. 2008;112(8):3194-3204.
35. Nakazawa F, Nagai H, Shin M, et al. Negative regulation of primitive hematopoiesis by the *FGF* signaling pathway. *Blood*. 2006;108(10):3335-3343.
36. Schuringa JJ, Wu K, Morrone G, et al. Enforced activation of *STAT5A* facilitates the generation of embryonic stem-derived hematopoietic stem cells that contribute to hematopoiesis in vivo. *Stem Cells*. 2004;22(7):1191-1204.
37. Gandillet A, Serrano AG, Pearson S, et al. *Sox7*-sustained expression alters the balance between proliferation and differentiation of hematopoietic progenitors at the onset of blood specification. *Blood*. 2009;114(23):4813-4822.
38. Serrano AG, Gandillet A, Pearson S, et al. Contrasting effects of *Sox17*- and *Sox18*-sustained expression at the onset of blood specification. *Blood*. 2010;115(19):3895-3898.
39. Takase H, Matsumoto K, Yamadera R, et al. Genome-wide identification of endothelial cell-enriched genes in the mouse embryo. *Blood*. 2012;120(4):914-923.
40. Lengerke C, Schmitt S, Bowman TV, et al. *BMP* and *Wnt* specify hematopoietic fate by activation of the *Cdx-Hox* pathway. *Cell Stem Cell*. 2008;2(1):72-82.
41. Grigorian M, Mandal L, Hakimi M, et al. The convergence of *Notch* and *MAPK* signaling specifies the blood progenitor fate in the *Drosophila* mesoderm. *Dev Biol*. 2011;353(1):105-118.
42. Kataoka H, Hayashi M, Nakagawa R, et al. *Etv2/ER71* induces vascular mesoderm from *Flk1*+*PDGFR $\alpha$* + primitive mesoderm. *Blood*. 2011;118(26):6975-6986.
43. Lee D, Park C, Lee H, et al. *ER71* acts downstream of *BMP*, *Notch*, and *Wnt* signaling in blood and vessel progenitor specification. *Cell Stem Cell*. 2008;2(5):497-507.
44. Zhang L, Magli A, Catanese J, et al. Modulation of *TGF- $\beta$*  signaling by *endoglin* in murine hemangioblast development and primitive hematopoiesis. *Blood*. 2011;118(1):88-97.
45. Storbeck CJ, Wagner S, O'Reilly P, et al. The *Ldb1* and *Ldb2* transcriptional cofactors interact with the *Ste20*-like kinase *SLK* and regulate cell migration. *Mol Biol Cell*. 2009;20(19):4174-4182.
46. Robb L, Lyons I, Li R, et al. Absence of yolk sac hematopoiesis from mice with a targeted disruption of the *scl* gene. *Proc Natl Acad Sci USA*. 1995;92(15):7075-7079.
47. Warren AJ, Colledge WH, Carlton MB, et al. The oncogenic cysteine-rich LIM domain protein *rbtn2* is essential for erythroid development. *Cell*. 1994;78(1):45-57.
48. D'Souza SL, Elefanti AG, Keller G. *SCL/Tal-1* is essential for hematopoietic commitment of the hemangioblast but not for its development. *Blood*. 2005;105(10):3862-3870.
49. Pevny L, Lin CS, D'Agati V, et al. Development of hematopoietic cells lacking transcription factor *GATA-1*. *Development*. 1995;121(1):163-172.
50. Pevny L, Simon MC, Robertson E, et al. Erythroid differentiation in chimaeric mice blocked by a targeted mutation in the gene for transcription factor *GATA-1*. *Nature*. 1991;349(6306):257-260.