



Kent Academic Repository

Panesar, Lucy and Vickers, Harriet (2022) *Places Never Seen: A youth led, digital exploration of the 1911 Festival of Empire*. [Conference item]

Downloaded from

<https://kar.kent.ac.uk/100373/> The University of Kent's Academic Repository KAR

The version of record is available from

This document version

Author's Accepted Manuscript

DOI for this version

Licence for this version

UNSPECIFIED

Additional information

Versions of research works

Versions of Record

If this version is the version of record, it is the same as the published version available on the publisher's web site. Cite as the published version.

Author Accepted Manuscripts

If this document is identified as the Author Accepted Manuscript it is the version after peer review but before type setting, copy editing or publisher branding. Cite as Surname, Initial. (Year) 'Title of article'. To be published in **Title of Journal**, Volume and issue numbers [peer-reviewed accepted version]. Available at: DOI or URL (Accessed: date).

Enquiries

If you have questions about this document contact ResearchSupport@kent.ac.uk. Please include the URL of the record in KAR. If you believe that your, or a third party's rights have been compromised through this document please see our [Take Down policy](https://www.kent.ac.uk/guides/kar-the-kent-academic-repository#policies) (available from <https://www.kent.ac.uk/guides/kar-the-kent-academic-repository#policies>).

ual - london college
of communication

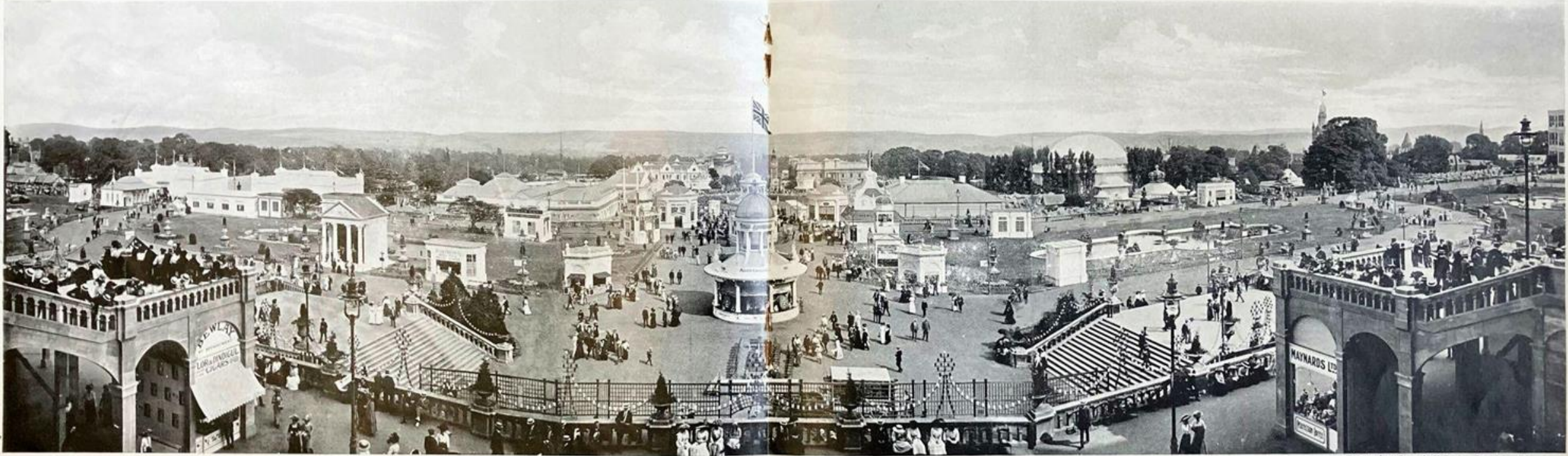
SLG



**Places Never Seen:
A youth led, digital
exploration of the 1911
Festival of Empire**

Audience Agency Dissemination Event
Harriet Vickers + Lucy Panesar | 30.05.22

The 1911 Festival of Empire – Crystal Palace Park



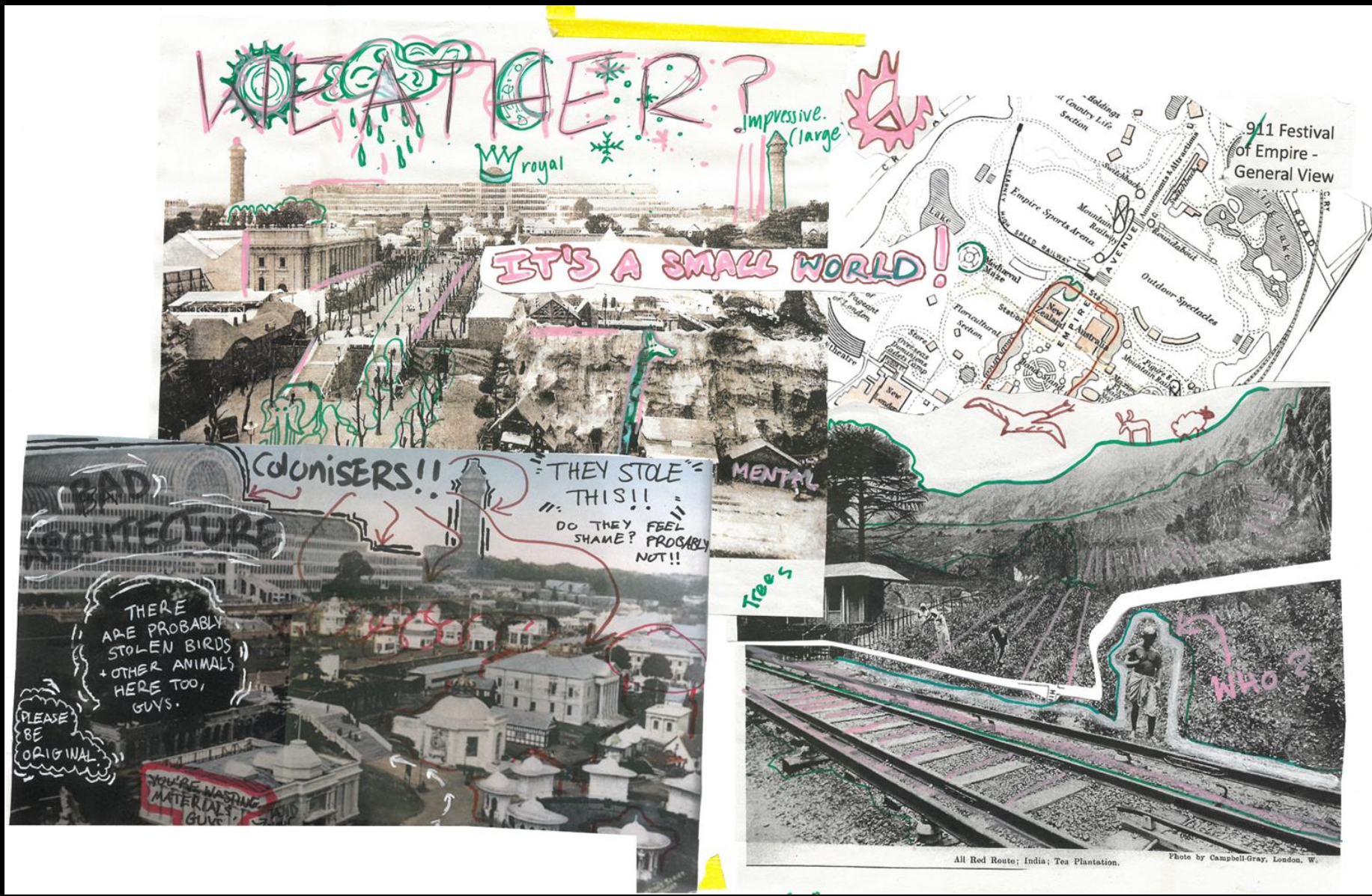
A Panoramic view of the grounds as seen from the Royal Box.

Photo by Campbell Gray, London, W.

<https://festivalofempire.myblog.arts.ac.uk/project-phase-2/>



The South London Gallery's Art Assassins



Collage by Art Assassins

Festival of Empire

From Wikipedia, the free encyclopedia

The 1911 **Festival of Empire** was the biggest single event held at **The Crystal Palace** in **London** since its opening. It opened on 12 May and was one of the events to celebrate the **coronation** of **King George V**. The original intention had been that Edward VII would open it in 1910, however, this was postponed after his death shortly before the planned opening day. The Festival contained a display of landscapes and exhibits from the British Empire, mainly the dominion countries, to encourage emigration to those nations; and it contained a large scale pageant dramatising British history.^[1] It was described at the time as 'a social gathering of the British family' encouraging the 'firmer welding of those invisible bonds which hold together the greatest empire the world has ever known'.^[2] It has since been described as the 'ultimate imperialist propaganda showcase'.^[3]

Contents [hide]


- Context
- Festival Design
 - Buildings
 - Exhibits on The All-Red Route Train Ride
- Pageant of London
- The King's Day with the Children
- Inter-Empire Championships
 - Athletics
- The End of the Festival
- Reception
- See also
- References
- External links

Coordinates: 



View from the Canadian replica Parliament Building of the Festival at the Crystal Palace 



Map of the event 

https://en.wikipedia.org/wiki/Festival_of_Empire

https://en.wikipedia.org/wiki/The_Crystal_Palace



Images of the research presentation to Art Assassins,
the Pageant of London, and the All Red Route

Clay sculptures by the Art Assassins





Digital storytelling with Jazmin Morris at UAL's Creative Computing Institute

CHAT ▾

ONLINE: 1 ▾



<https://framevr.io/places-never-seen>