



Kent Academic Repository

Hoque, Sumaiya, Mavrides, Daphne E., Pinto, Pedro, Costas, Silvia, Begum, Nisa, Azevedo-Ribeiro, Claudia, Liapi, Maria, Kvá, Martin, Malas, Stavros, Gentekaki, Eleni and and others (2022) *High Occurrence of Zoonotic Subtypes of Cryptosporidium parvum in Cypriot Dairy Farms*. *Microorganisms*, 10 (3). ISSN 2076-2607.

Downloaded from

<https://kar.kent.ac.uk/98172/> The University of Kent's Academic Repository KAR

The version of record is available from

<https://doi.org/10.3390/microorganisms10030531>

This document version

Publisher pdf

DOI for this version

Licence for this version

CC BY (Attribution)

Additional information

Versions of research works

Versions of Record

If this version is the version of record, it is the same as the published version available on the publisher's web site. Cite as the published version.

Author Accepted Manuscripts

If this document is identified as the Author Accepted Manuscript it is the version after peer review but before type setting, copy editing or publisher branding. Cite as Surname, Initial. (Year) 'Title of article'. To be published in *Title of Journal*, Volume and issue numbers [peer-reviewed accepted version]. Available at: DOI or URL (Accessed: date).

Enquiries

If you have questions about this document contact ResearchSupport@kent.ac.uk. Please include the URL of the record in KAR. If you believe that your, or a third party's rights have been compromised through this document please see our [Take Down policy](https://www.kent.ac.uk/guides/kar-the-kent-academic-repository#policies) (available from <https://www.kent.ac.uk/guides/kar-the-kent-academic-repository#policies>).



Brief Report

High Occurrence of Zoonotic Subtypes of *Cryptosporidium parvum* in Cypriot Dairy Farms

Sumaiya Hoque ¹, Daphne E. Mavrides ², Pedro Pinto ¹, Silvia Costas ^{1,†}, Nisa Begum ^{1,†}, Claudia Azevedo-Ribeiro ¹, Maria Liapi ³, Martin Kváč ^{4,5}, Stavros Malas ², Eleni Gentekaki ^{6,7} and Anastasios D. Tsaousis ^{1,2,*}

- ¹ Laboratory of Molecular and Evolutionary Parasitology, RAPID Group, School of Biosciences, University of Kent, Canterbury CT2 7NJ, UK; sh986@kent.ac.uk (S.H.); pp410@kent.ac.uk (P.P.); silvia.costas24@hotmail.com (S.C.); nisabegum@hotmail.co.uk (N.B.); c.azevedo-ribeiro@kent.ac.uk (C.A.-R.)
- ² Department of Basic Sciences, University of Nicosia Medical School, Nicosia 2408, Cyprus; mavrides.d@live.unic.ac.cy (D.E.M.); malas.st@unic.ac.cy (S.M.)
- ³ Veterinary Services of Cyprus, Nicosia 1417, Cyprus; mliapi@vs.moa.gov.cy
- ⁴ Biology Centre CAS, Institute of Parasitology, Czech Academy of Sciences, 370 05 České Budějovice, Czech Republic; kvac@paru.cas.cz
- ⁵ Faculty of Agriculture, University of South Bohemia, 370 05 České Budějovice, Czech Republic
- ⁶ School of Science, Mae Fah Luang University, Chiang Rai 57100, Thailand; gentekaki.ele@mfu.ac.th
- ⁷ Gut Microbiome Research Group, Mae Fah Luang University, Chiang Rai 57100, Thailand
- * Correspondence: a.tsaousis@kent.ac.uk or tsaousis.anastasios@gmail.com
- † These authors have contributed equally to this work.



Citation: Hoque, S.; Mavrides, D.E.; Pinto, P.; Costas, S.; Begum, N.; Azevedo-Ribeiro, C.; Liapi, M.; Kváč, M.; Malas, S.; Gentekaki, E.; et al. High Occurrence of Zoonotic Subtypes of *Cryptosporidium parvum* in Cypriot Dairy Farms. *Microorganisms* **2022**, *10*, 531. <https://doi.org/10.3390/microorganisms10030531>

Academic Editor: Gereon R. M. Schares

Received: 24 January 2022
Accepted: 23 February 2022
Published: 28 February 2022

Publisher's Note: MDPI stays neutral with regard to jurisdictional claims in published maps and institutional affiliations.



Copyright: © 2022 by the authors. Licensee MDPI, Basel, Switzerland. This article is an open access article distributed under the terms and conditions of the Creative Commons Attribution (CC BY) license (<https://creativecommons.org/licenses/by/4.0/>).

Abstract: *Cryptosporidium parvum* is one of the major causes of neonatal calf diarrhoea resulting in reduced farm productivity and compromised animal welfare worldwide. Livestock act as a major reservoir of this parasite, which can be transmitted to humans directly and/or indirectly, posing a public health risk. Research reports on the prevalence of *Cryptosporidium* in ruminants from east Mediterranean countries, including Cyprus, are limited. This study is the first to explore the occurrence of *Cryptosporidium* spp. in cattle up to 24 months old on the island of Cyprus. A total of 242 faecal samples were collected from 10 dairy cattle farms in Cyprus, all of which were screened for *Cryptosporidium* spp. using nested-PCR amplification targeting the small subunit of the ribosomal RNA (18S rRNA) gene. The 60 kDa glycoprotein (*gp60*) gene was also sequenced for the samples identified as *Cryptosporidium parvum*-positive to determine the subtypes present. The occurrence of *Cryptosporidium* was 43.8% (106/242) with at least one positive isolate in each farm sampled. *Cryptosporidium bovis*, *Cryptosporidium ryanae* and *C. parvum* were the only species identified, while the prevalence per farm ranged from 20–64%. Amongst these, the latter was the predominant species, representing 51.8% of all positive samples, followed by *C. bovis* (21.7%) and *C. ryanae* (31.1%). Five *C. parvum* subtypes were identified, four of which are zoonotic—IaA14G1R1, IaA15G1R1, IaA15G2R1 and IaA18G2R1. IaA14G1R1 was the most abundant, representing 48.2% of all *C. parvum* positive samples, and was also the most widespread. This is the first report of zoonotic subtypes of *C. parvum* circulating in Cyprus. These results highlight the need for further research into the parasite focusing on its diversity, prevalence, host range and transmission dynamics on the island.

Keywords: *Cryptosporidium*; *Cryptosporidium parvum* detection; subtyping; *gp60*; 18S rRNA; calves; Cyprus; zoonosis

1. Introduction

Cryptosporidium is an apicomplexan parasite and the causative agent of cryptosporidiosis [1]. Clinical signs of this disease include watery diarrhoea and dehydration, which can prove fatal, particularly in immunocompromised individuals and infants [2,3]. The

transmission form of the parasite is the oocyst, which can be transmitted directly via the faecal–oral route or indirectly through contaminated food and water [1]. Oocysts are very robust, are highly resistant to environmental changes and can remain dormant for up to six months [1,4]. Millions of oocysts can be shed through bowel movements of infected hosts, both humans and other animals. Coupled with a lack of effective therapeutic agents and vaccines [5,6], it has proven difficult to manage outbreaks and the spread of *Cryptosporidium*. The outbreaks are commonly of a zoonotic nature with farms constituting a major reservoir of the parasite [7].

Of the 49 described *Cryptosporidium* species, around 20 of them are zoonotic [8,9]. Molecular surveillance of *Cryptosporidium* ssp. outbreaks indicates that the zoonotic *C. parvum* and the anthroponotic *C. hominis* are responsible for the majority of human cryptosporidiosis cases [10,11]. Amongst farm animals, goats and cattle are the main hosts of the organism. In cattle farms, *C. andersoni*, *C. bovis*, *C. ryanae* and *C. parvum* are the major species. Age-related variance of infecting *Cryptosporidium* species has been shown, with *C. parvum* typically infecting neonatal calves, while the others are typically found in adults, heifers and post-weaned calves [12]. *Cryptosporidium parvum* is the most clinically significant as it is the most widespread species in cattle [13–15] and a major cause of enteritis, causing neonatal diarrhoea and subsequent long-term adverse effects on weight gain [6,13,16]. The disease leads to significant economic losses for cattle farmers due to reduced production efficiencies of meat and milk [17–19]. Aside from the financial impact of *Cryptosporidium* infections, cattle have been well-established as a key source of zoonotic cryptosporidiosis, giving an epidemiological dimension to the issue [5,20,21].

Prevalence investigations have frequently been carried out in almost all continents [22,23]. Studies of *Cryptosporidium* occurrences in Europe point towards a high prevalence [24–26]. These investigations have primarily focused on mainland Europe, while island nations have been largely overlooked—with the exception of the UK [27]. Island settings are ideal for studying the epidemiological and ecological aspects of parasitic organisms due to restricted boundaries and the subsequent limited movement of hosts. Regrettably, there is a lack of information on the prevalence and subtypes of *Cryptosporidium* spp. circulating in small European island nations.

This study provides the first molecular epidemiological data on *Cryptosporidium* spp. in dairy cattle in Cyprus. The island is the third largest in the Mediterranean region and is in the paths of three continents. Using molecular techniques and analyses, we were able to identify *Cryptosporidium* species and subtypes circulating within the examined cattle farms. This work will spearhead further studies on the roles and effects of the parasite in this unique region of the world.

2. Methods

2.1. Study Area

Cyprus has 358 dairy cattle farms with approximately 43,900 cows of the Holstein Friesian breed. All cattle farms in Cyprus are intended for dairy production as there are no farms that specifically breed for meat production. Farms are located in all five districts of Cyprus: Nicosia, Larnaca, Limassol, Ammochostos and Paphos. Samples were collected from ten randomly selected farms located in Larnaca and Nicosia (Figure 1). These two districts were chosen as this is where most farms are located, many of which are heavily aggregated with a close proximity between them. Eight farms were located in Nicosia and two were located in Larnaca. The Nicosia district lies in the centre of the island, and samples were taken from the Dali, Tseri, Ayia Varvara, Akaki and Arediou regions. Most of the selected farms in Nicosia are at a relatively low altitude (200–400 m), experiencing hot, dry and humid summers and cold winters with minimal precipitation. The two farms in the Larnaca district were located in the Aradippou region, which has a great confluence of farms. The area experiences a climate similar to that of Nicosia with a slightly elevated humidity due to a closer proximity to the sea and a lower altitude (80 m). Farmers were invited to participate in the study by the employed veterinarian, who also

explained the research project and its overall aims and objectives. The study was under the umbrella of the National Veterinary Services. Cows from all selected farms were of the dairy-producing Holstein Friesian breed. Most farms in Cyprus have intensive to semi-intensive farming conditions (semi-intensive is a system where cattle are exposed to a combination of intensive and extensive methods, which can alternate year-round depending on the weather). Cows are usually housed indoors year-round to avoid heat stress due to warm weather and a lack of grass for grazing outdoors. Rainfall is minimal and so irrigation is necessary to compensate for limited water resources. All participating farms in this study raised their cows semi-intensively.

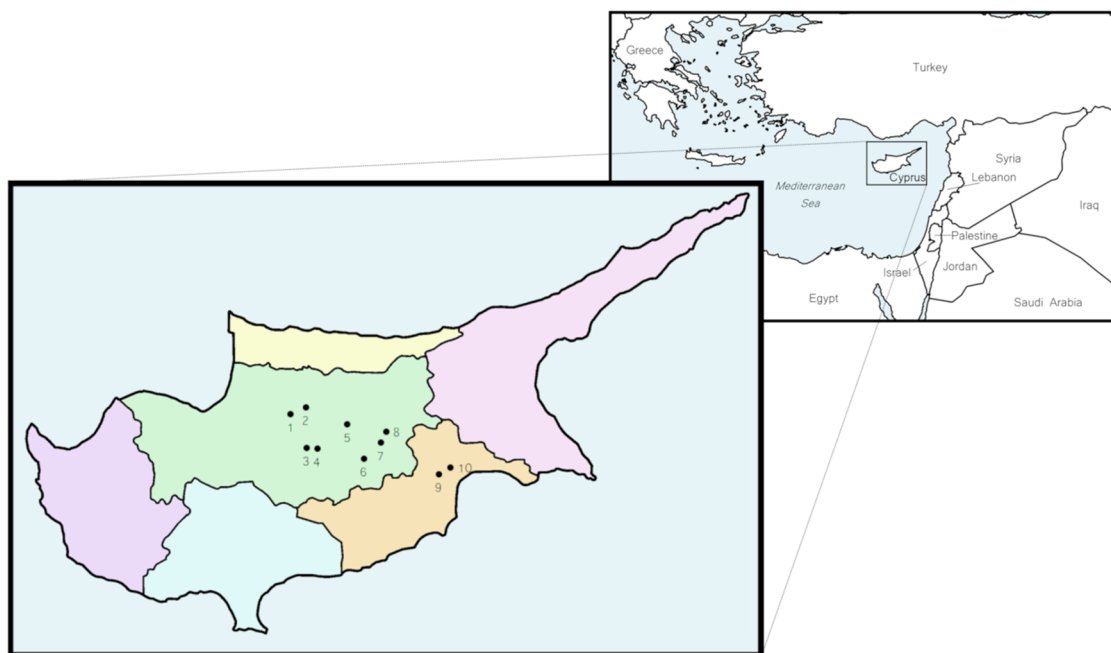


Figure 1. Geographic location of Cyprus in the East Mediterranean region and distribution of the cattle farms sampled. Farms 1–8 were located across the Nicosia district (green), while farms 9–10 were located in the Larnaca district (orange).

2.2. Sample Collection and DNA Extraction

A total of 242 faecal samples were collected in November 2019. While the study focused mainly on pre-weaned animals, samples were also collected from animals up to two years of age (see Supplementary Table S1). Animals were randomly selected. Faeces were collected immediately after defecation, placed in sterile tubes and stored on ice. Tubes were stored at $-20\text{ }^{\circ}\text{C}$ upon arrival at the laboratory. Throughout a random sampling, a mix of diarrheic and asymptomatic calves were sampled (depending on the age of the calves; samples from younger calves were mostly in mushy to liquid forms than the samples from older calves). The condition of the faeces was noted using the Bristol stool score (see Supplementary Figure S1), with higher scores representing softer, watery stools. DNA extraction was carried out using 200 mg of faeces per sample and the PureLink™ Microbiome DNA Purification Kit (Thermo Fisher Scientific, Carlsbad, CA, USA) according to the manufacturer's instructions, with slight modifications. Specifically, 650 μL of S1 lysis buffer was used for each sample. After addition of the S2 lysis enhancer, the samples were incubated for 13 min at $65\text{ }^{\circ}\text{C}$ and homogenised for a further 13 min. Following an addition of the S3 clean-up buffer, the samples were incubated at $4\text{ }^{\circ}\text{C}$ for 10 min to optimise the removal of proteins. After an addition of 100 μL of the S6 elution buffer, the samples were incubated at room temperature for 3 min before centrifugation to improve DNA yield. Genomic DNA was stored at $-20\text{ }^{\circ}\text{C}$ until amplification reactions of the small subunit ribosomal RNA (*18S* rRNA) and 60 kDa glycoprotein (*gp60*) gene were carried out.

2.3. *Cryptosporidium* spp. Screening and Molecular Genotyping

Samples were screened for *Cryptosporidium* spp. using nested-PCR amplification of the 631 bp region of the 18S rRNA gene [24,28]. Positive (genomic DNA from a pure culture of *C. parvum*) and negative (water was used as template instead of DNA) controls were included in both the reactions. PCR products were separated on a 2% gel and extracted using the GeneJET Gel Extraction Kit (Thermo Fisher Scientific, Carlsbad, CA, USA). Sanger sequencing was used to identify *Cryptosporidium* spp. Samples were bidirectionally sequenced (Eurofins Genomics, Wolverhampton, UK) using internal PCR primers. Chromatograms were manually assessed for quality and ambiguous bases were trimmed on both ends of the reads. For species-level identifications, sequences were used as queries to perform BLAST searches against the nucleotide database in GenBank, followed by an alignment with reference sequences.

2.4. *Cryptosporidium* Screening and *gp60* Subtyping

To determine the subtypes of the *Cryptosporidium* 18S rRNA PCR-positive samples, a nested PCR of the *gp60* gene was carried out [24,29]. Positive and negative controls were as described above and included in both reactions. PCR products were separated on a 2% gel and extracted using the GeneJET Gel Extraction Kit (Thermo Fisher Scientific, Carlsbad, CA, USA). Sanger sequencing was used to identify *Cryptosporidium* subtypes. Samples were bidirectionally sequenced (Eurofins Genomics, Wolverhampton, UK) using the internal PCR primers. Chromatograms were manually assessed for quality and ambiguous bases were trimmed on both ends of the reads. Subtypes were determined using established standard nomenclature [30]. Newly generated sequences were used as queries to perform BLAST searches against the nucleotide database in GenBank, followed by an alignment with reference sequences. Polymorphisms were identified using these alignments.

3. Results

3.1. *Cryptosporidium* spp. Occurrences across Cypriot Farms

The amplification of the 18S rRNA gene showed an occurrence of 43.8% with 106/242 specimens positive for *Cryptosporidium* spp. (Table 1). Occurrences varied across the farms from 20% (3/15) to 64% (16/25).

Table 1. *Cryptosporidium* spp. prevalence in Cypriot dairy farms.

Farm	No. of Specimens	Age Range	<i>Cryptosporidium</i> spp. Present			
			<i>C. parvum</i>	<i>C. bovis</i>	<i>C. ryanae</i>	<i>C. ryanae/C. parvum</i> Co-Infection
1	13	0–2 years	3	–	2	–
2	11	9–98 days	2	2	–	–
3	11	Pre-weaned	1	2	4	–
4	15	27–73 days	–	–	3	–
5	25	8–11 months	7	3	5	1
6	23	Pre-weaned	5	3	2	1
7	19	1–3 months	3	2	1	–
8	23	Pre-weaned	8	–	3	–
9	41	Pre-weaned	13	3	2	3
10	61	Pre-weaned	8	8	6	–
Overall	242		50	23	28	5

The majority of the positive samples were identified as *C. parvum* (47.2%, 50/106), with 41 of them showing a 100% nucleotide identity to the reference sequence AH006572.2 and one sample showing a 99% nucleotide identity to the same sequence. We were unable to obtain good quality sequences for eight 18S rRNA PCR-positive samples. Nonetheless, a *C. parvum* identity was confirmed through a positive *gp60* PCR and subsequent sequenc-

ing. At the farm level, *C. parvum* was present in 9/10 farms, with occurrences ranging from 9.1% to 34.8%.

The next most common species present was *C. ryanae* (25.5%, 27/106). Additionally, six samples from three farms had co-infections of *C. ryanae* and *C. parvum*, with their presence determined through 18S rRNA and *gp60* amplifications, respectively. Twenty-nine samples had a 100% nucleotide identity to the reference sequence KF128756.1, while one was 99% identical to the same sequence. Another variant of *C. ryanae* was identified, with three samples having a 100% nucleotide identity to the reference sequence KT922233.1. *Cryptosporidium bovis* was the least prevalent species identified (21.7%, 23/106), with all 23 samples showing a 100% nucleotide identity to the reference sequence EU827363.2. Representative nucleotide sequences of 18S rRNA have been deposited in GenBank under the accession numbers OL348064-OL348160.

3.2. *Cryptosporidium parvum* Subtyping through *gp60* Analysis

All 50 of the 18S rRNA PCR-positive samples were screened using a nested PCR of the *gp60* gene. Of these, the *gp60* gene was successfully amplified and sequenced in 42 samples and then subtyped for *C. parvum*. A further five *gp60*-positive samples were identified as *C. ryanae*. Sequence analysis revealed the presence of five subtypes, all belonging to the IIA *C. parvum* family (Table 2). Nine of the farms sampled contained at least one *C. parvum* subtype.

Table 2. Number of *Cryptosporidium parvum gp60* subtypes identified out of total *C. parvum*-positive samples per farm.

Farm	Subtypes (No. of Subtype/Total <i>C. parvum</i> Samples per Farm)
1	Unidentified (3/3)
2	IaA14G1R1 (2/2)
3	IaA15G1R1 (1/1)
4	–
5	IaA14G1R1 (6/8), IaA15G2R1 (2/8)
6	IaA14G1R1 (5/6), IaA15G2R1 (1/6)
7	IaA14G1R1 (6/8), IaA18G2R1 (1/8), Unidentified (1/8)
8	IaA14G1R1 (2/3), Unidentified (1/3)
9	IaA12G1R1 (14/16) IaA15G2R1 (1/16), Unidentified (1/16)
10	IaA14G1R1 (6/8), Unidentified (2/8)

The IaA14G1R1 subtype was the most numerically prevalent, occurring in 60% of the farms, making it also the most widely distributed. It was the sole subtype present on three farms and represented 57.4% (27/47) of all the *C. parvum*-positive samples with successful *gp60* sequencing. All 27 showed a 100% nucleotide identity to the reference sequence MN815774.1. The IaA12G1R1 subtype was the next-most prevalent and was only found in one farm, accounting for 29.7% (14/47) of all the *C. parvum* infections. All 14 samples were identical and showed a 99% nucleotide identity to the reference sequence MW411017.1. Four samples were identified as IaA15G2R1, with two of them showing a 100% nucleotide identity to the reference sequence DQ630518.1, while the other two were 99% identical with the same sequence. One sample was identified as IaA15G1R1, with a 99% nucleotide identity to the reference sequence AB777872.1, and another was identified as IaA18G2R1, with a 99% nucleotide identity to the reference sequence DQ630515.1 (Table 3). Representative nucleotide sequences of *gp60* have been deposited in GenBank under the accession numbers OL462897-OL462943.

3.3. Geographical Distribution of Subtypes

For easy visualization, subtype names were also indicated by their colour as depicted in Figure 2. The most broadly distributed subtype was IaA14G1R1 (red), present in 6/9 (67%) of the *C. parvum*-positive farms, followed by IaA15G2R1 (green), present in 3/9 (33%) farms. In all cases, the IaA15G2R1 (green) subtype co-occurred with another

and was the least dominant of the two. In two cases, a co-occurrence was with IlaA14G1R1 (red), and in one case, a co-occurrence was with IlaA12G1R1 (orange). The latter subtype, along with IlaA18G2R1 (yellow) and IlaA15G1R1 (blue), occurred only in one farm each. In four farms, only a single subtype was detected: IlaA14G1R1 (red) in three and IlaA15G1R1 (blue) in one. Notably, in Larnaca, the two sampled farms were in very close proximity, but the subtypes present did not overlap. One farm had only the IlaA14G1R1 (red) subtype, while the other had IlaA12G1R1 (orange) and IlaA15G2R1 (green).

Table 3. Polymorphisms in *Cryptosporidium* 18S SSU rRNA and *gp60* gene sequences showing intra-species genetic variability.

Gene	<i>Cryptosporidium</i> Species/Subtype	GenBank Accession Number	Polymorphisms ^b	Reference Sequence
18S	<i>C. parvum</i>	OL348120	G→A, position 701	AH006572.2
18S	<i>C. ryanae</i>	OL348112	T insertion, position 490	KF128756.1
<i>gp60</i>	<i>C. parvum</i> (IlaA12G1R1)	OL462923 ^a	A→G, position 183 C→T, position 721	MW411017.1
<i>gp60</i>	<i>C. parvum</i> (IlaA15G2R1)	OL462910	G→A, positions 163 and 581 A→T, position 639 A→G, position 687	DQ630518.1
<i>gp60</i>	<i>C. parvum</i> (IlaA15G2R1)	OL462917	T→C, positions 454 and 469	
<i>gp60</i>	<i>C. parvum</i> (IlaA15G1R1)	OL462922	C→T, position 753	AB777872.1
<i>gp60</i>	<i>C. parvum</i> (IlaA18G2R1)	OL462903	T→G, position 375	DQ630515.1

^a Though multiple identical sequences were found, only one accession number is given for simplicity; ^b positions indicate differences from the reference sequence.

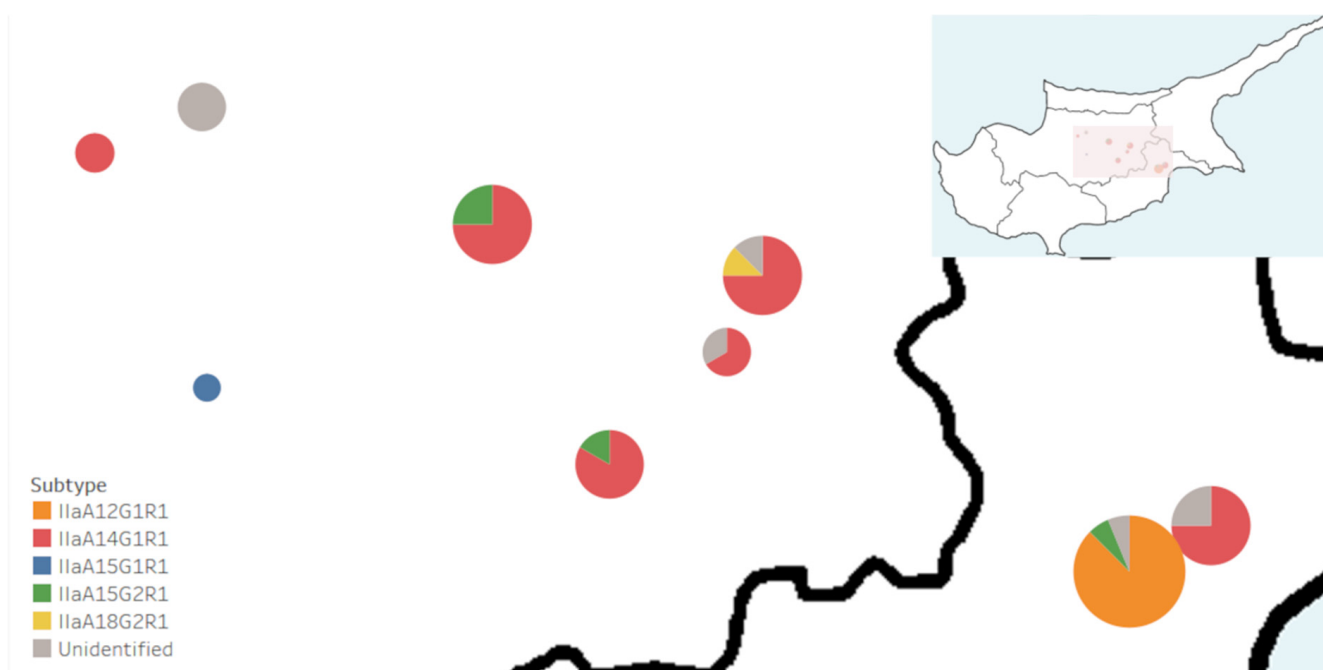


Figure 2. *Cryptosporidium parvum* subtype prevalence across Cypriot cattle farms. Geographical distribution of *gp60* subtypes across Cyprus cattle farms: IlaA12G1R1 (orange), IlaA14G1R1 (red), IlaA15G1R1 (blue), IlaA15G2R1 (green) and IlaA18G2R1 (yellow). *C. parvum*-positive samples with unsuccessful *gp60* sequencing are indicated in grey. Pie charts are proportional to number of *C. parvum*-positive samples identified per farm.

4. Discussion

This is the first study to investigate *Cryptosporidium* spp. occurrences in the dairy farms of Cyprus. The study mainly focused on young calves up to three months of age, although we have collected samples from older calves as well. The overall occurrence of the parasite was 43.8%. Previous molecular studies on the surrounding Mediterranean region have generally reported lower incidences of *Cryptosporidium* infections amongst cattle. Specifically, studies using 18S rRNA PCR and sequencing in Turkey found prevalence ranges of 3.9–53.6% [31–35]. In Egypt, the subtype-based prevalence was between 7 and 30.2% [36–40]. A small-scale PCR-based study in Jordan found 18.7% of asymptomatic cattle carried the organism [41]. The discrepancy in the prevalence observed among these studies may be due to various factors, including the ages of the cows, the farm/herd locations, seasonality, farm management and methods of detection. Due to time and financial constraints, microscopic analysis of faeces is a popular screening method, where only microscopically positive samples undergo molecular genotyping. While these studies do provide information on the *Cryptosporidium* species and *C. parvum* subtypes present, they likely underestimate prevalence due to the reduced sensitivity of microscopy as a screening technique. Additionally, some studies only targeted diarrheic animals [33,35], ignoring the presence of *Cryptosporidium* in asymptomatic individuals. The presence of the parasite in non-diarrheic samples is still of clinical significance as asymptomatic animals can still shed oocysts in their environment and spread infection [6]. Herein, we used a nested-PCR approach to identify and subtype (see below) *Cryptosporidium*, which is a more sensitive and specific method. At the farm level, *Cryptosporidium* was broadly distributed across all farms. This finding matches previous flock-level studies in goats and sheep in Cyprus [42]. Even though this is a preliminary finding, it shows that the parasite is widespread in this region, hinting at its potential of zoonotic transmission. Follow-up studies should expand to include farms across the whole island. The variations in *Cryptosporidium* occurrences per farm could indicate differences in farm management practices. Climate variables, such as temperature and precipitation, may also play a part in the *Cryptosporidium* spread [43,44], with some studies showing seasonal variations in *Cryptosporidium* prevalence in cattle farms [45]. Nonetheless, in this study, there was no precipitation, and there was a minimal variation in temperature in the region during the sampling period (see Supplementary Figure S2). As such, future investigations should report these variables along with potential risk factors, e.g., calf husbandry practices, box dynamics, bedding, colostrum feeding schedules, climate, and geographical variables, to understand their impacts on parasite spreading. A shortcoming of this study is the lack of information that allows for the stratification of age data for the sampled cows. As *C. parvum* has been well established to occur most often in neonatal calves up to three weeks old, it is possible the differences in the prevalence between farms were due to differences in the age ranges of the cows sampled.

Cryptosporidium parvum was the most numerically predominant species present, representing 51.8% of total infections, followed by *C. ryanae* at 31.1% and *C. bovis* at 21.7%. Our results on the predominance of *C. parvum* are in agreement with those from surrounding regions on both healthy and diarrheic animals [31,35,36,46–48]. The predominance of *C. parvum* specifically in pre-weaned cattle has also been reported in the USA [12]. At the farm level, *C. parvum* and *C. ryanae* were found in 90% of the farms, while *C. bovis* was present in 60%. *C. ryanae* and *C. bovis* infections are typically asymptomatic and occur in older animals. Since this study mainly focused on pre-weaned and young calves, it is possible that these two species might be under-represented. Hence, future studies should focus on a wider age range of cattle.

Amongst the 55 *C. parvum*-positive samples identified with 18S rRNA, including co-infections, only 47 were subtyped. The rest of the samples could not be subtyped due to unclear sequence chromatograms. This could suggest that the calves from which the samples were obtained carried multiple subtypes of *C. parvum*. A drawback of nested PCR and Sanger sequencing is the amplification and detection of only the more abundant species

in a sample, while mixed or less abundant species are essentially hidden from detection. Previous molecular studies on *Cryptosporidium* have employed next-generation sequencing and have successfully identified mixed infections as well as less abundant species and subtypes [49]. Recently, TIDE, a new bioinformatics platform, was used to discern the multiple *gp60* subtypes present in obscure chromatograms [50]. Hence, a combination of metagenomics and upcoming methodologies will assist in tackling this common issue in the future.

As is typical in cattle, all the subtypes were in the IIa family; however, the predominant *C. parvum* subtypes found in this study do not correspond to those of surrounding countries. For instance, in Turkey, the endemic subtype is IIaA13G2R1. In Egypt, the IIc family is most commonly found in cows, with the IIcA20G1 subtype being endemic [37–40,46,51]. As IIc subtypes typically infect smaller ruminants, such as lambs and goats, it is possible its prevalence in Egypt's cattle is due to close contact with other livestock [52]. Herein, the most numerically abundant *C. parvum* subtype was IIaA14G1R1 (red colour, Figure 2), and it was also the most widespread, having been found in 6/10 farms. This subtype has been reported previously in cows from Turkey [31], Austria [53,54], Estonia [55], Poland [56], Germany [57] and the Netherlands [24], though it was typically less abundant in all cases. Outbreaks of human cryptosporidiosis in Norway and New Zealand [58,59] have been attributed to IIaA14G1R1, and the subtype has also been found in human samples from the USA [60], Ethiopia [61], Slovenia [62] and Slovakia [63]. In the UK, IIaA14G1R1 has been found in animal housing premises that have been identified as potential sources of transmission [64]. This is the first report on IIaA14G1R1 as the predominant subtype circulating in a region, highlighting its zoonotic potential. However, as this study had a relatively small sample size, the subtypes identified here may not be indicative of the entire cattle population in this country.

The IIaA12G1R1 (orange, Figure 2) subtype comprised 25.4% of the *C. parvum*-positive samples and was only identified in a single farm. Previously, IIaA12G1R1 has been detected in cows in Israel, making this report the second one in the region [47]. The zoonotic potential of this subtype remains to be determined, having so far only been reported in animals. The IIaA15G2R1 (green, Figure 2) subtype is the most predominant worldwide [65], including the neighbouring countries Turkey [66] and Israel [47]. However, it occurred at relatively low levels in the Cypriot farms studied (8.5%). IIaA15G2R1 is responsible for the majority of acute clinical diseases in humans; hence, its zoonotic potential has been well established [14,65]. Nonetheless, our results indicate it may not play a key role in zoonotic transmissions in Cyprus, though this needs further investigations with larger sample sizes.

Single isolates of IIaA15G1R1 (blue, Figure 2) and of IIaA18G2R1 (yellow, Figure 2) were also detected. In cattle, IIaA15G1R1 has been found in Egypt [36,39], Sweden [67] and the Czech Republic [68]. Its zoonotic potential appears to be high, having been linked to numerous instances of human cryptosporidiosis globally. For instance, in Scotland, IIaA15G1R1 is responsible for 47% of human cryptosporidiosis cases [69]. The subtype has also been identified in humans with diarrhoea who are from England [70], Australia [71], Egypt [46], Slovenia [62] and Lebanon [72]. IIaA18G2R1 has been previously identified in cattle in the USA [73], Northern Ireland [74], Germany [75], Italy [76] and France [24], though typically has been one of the less common subtypes found. This is a potentially zoonotic subtype having been identified sporadically in humans from England [70], the USA [60,77] and Australia [78].

5. Conclusions

To date, there have been no studies on human cryptosporidiosis in Cyprus [79]. Despite this, our study revealed a high occurrence of *C. parvum* (90%) in dairy calves, with four out of the five subtypes identified being zoonotic. This brings into question the circulation of the various subtypes not only in calves, but also in human and other animal hosts as well as the environment. It is worth noting that Cyprus imports cattle from Austria, the Czech Republic, Denmark, Germany, Italy, and the Netherlands for both breeding and

production purposes. Hence, screening these animals for *Cryptosporidium* spp. would help track the circulation and introduction of various subtypes across the different countries. While this report represents a first step in determining *Cryptosporidium* burdens in cattle in Cyprus, significant literature gaps on the prevalence, transmission dynamics, sources of infection and effective interventions remain, calling into attention the need for a One Health approach in the immediate future.

Supplementary Materials: The following supporting information can be downloaded at <https://www.mdpi.com/article/10.3390/microorganisms10030531/s1>, Figure S1: Bristol stool score ranges for the *Cryptosporidium* spp. identified in this study, Figure S2: Meteorological report on Nicosia and Larnaca, indicating average temperature and rainfall in these regions during the sampling period, Table S1: Age range of sampled cows at each farm.

Author Contributions: Conceptualization, A.D.T.; methodology, S.H., D.E.M., P.P., C.A.-R., N.B. and S.C.; software, M.K.; validation, S.H., P.P., M.K., E.G. and A.D.T.; formal analysis, S.H. and D.E.M.; investigation, S.H., M.L. and D.E.M.; resources, A.D.T. and S.M.; data curation, M.K.; writing—original draft preparation, S.H.; writing—review and editing, D.E.M., E.G. and A.D.T.; supervision, A.D.T. and S.M.; project administration, S.M. and A.D.T.; funding acquisition, A.D.T. All authors have read and agreed to the published version of the manuscript.

Funding: This project received funding from the Interreg 2 Seas programme (2014–2020) co-funded by the European Regional Development Fund under subsidy contract No. 2S05-043.

Institutional Review Board Statement: This study focused only on the collection of faecal samples from selected dairy cows under the supervision of expert veterinarians, and thus, there were no ethical implications. Consequently, there was no need for any further ethical approvals.

Informed Consent Statement: Not applicable.

Data Availability Statement: All data have been submitted to GenBank as shown in the methods section.

Acknowledgments: We would like to thank the University of Nicosia for funding this work. S.H.'s studentship was funded by the Health 4 Dairy Cows (H4DC) Interreg 2 Seas programme. We are grateful to the farmers and veterinarians in Cyprus who participated in this study. A.D.T. would like to dedicate this manuscript to his son Alexandros.

Conflicts of Interest: The authors declare no conflict of interest.

References

- Shirley, D.-A.T.; Moonah, S.N.; Kotloff, K.L. Burden of disease from cryptosporidiosis. *Curr. Opin. Infect. Dis.* **2012**, *25*, 555–563. [[CrossRef](#)] [[PubMed](#)]
- Carter, B.L.; Chalmers, R.M.; Davies, A.P. Health sequelae of human cryptosporidiosis in industrialised countries: A systematic review. *Parasites Vectors* **2020**, *13*, 443. [[CrossRef](#)] [[PubMed](#)]
- Vanathy, K.; Parija, S.C.; Mandal, J.; Hamide, A.; Krishnamurthy, S. Cryptosporidiosis: A mini review. *Trop. Parasitol.* **2017**, *7*, 72–80. [[CrossRef](#)]
- King, B.; Monis, P.T. Critical processes affecting *Cryptosporidium* oocyst survival in the environment. *Parasitology* **2006**, *134*, 309–323. [[CrossRef](#)]
- Mosier, D.A.; Oberst, R.D. Cryptosporidiosis: A Global Challenge. *Ann. N. Y. Acad. Sci.* **2006**, *916*, 102–111. [[CrossRef](#)]
- Thomson, S.; Hamilton, C.A.; Hope, J.C.; Katzer, F.; Mabbott, N.A.; Morrison, L.J.; Innes, E.A. Bovine cryptosporidiosis: Impact, host–parasite interaction and control strategies. *Vet. Res.* **2017**, *48*, 42. [[CrossRef](#)] [[PubMed](#)]
- Hatam-Nahavandi, K.; Ahmadpour, E.; Carmena, D.; Spotin, A.; Bangoura, B.; Xiao, L. *Cryptosporidium* infections in terrestrial ungulates with focus on livestock: A systematic review and meta-analysis. *Parasites Vectors* **2019**, *12*, 453. [[CrossRef](#)]
- Ježková, J.; Limpouchová, Z.; Prediger, J.; Holubová, N.; Sak, B.; Konečný, R.; Květoňová, D.; Hlásková, L.; Rost, M.; McEvoy, J.; et al. *Cryptosporidium myocastoris* n. sp. (Apicomplexa: Cryptosporidiidae), the Species Adapted to the Nutria (*Myocastor coypus*). *Microorganisms* **2021**, *9*, 813. [[CrossRef](#)]
- Prediger, J.; Ježková, J.; Holubová, N.; Sak, B.; Konečný, R.; Rost, M.; McEvoy, J.; Rajský, D.; Kváč, M. *Cryptosporidium sciurinum* n. sp. (Apicomplexa: Cryptosporidiidae) in Eurasian Red Squirrels (*Sciurus vulgaris*). *Microorganisms* **2021**, *9*, 2050. [[CrossRef](#)]
- Leitch, G.J.; He, Q. Cryptosporidiosis—an overview. *J. Biomed. Res.* **2012**, *25*, 1–16. [[CrossRef](#)]
- Xiao, L.; Feng, Y. Zoonotic cryptosporidiosis. *FEMS Immunol. Med. Microbiol.* **2008**, *52*, 309–323. [[CrossRef](#)] [[PubMed](#)]
- Sanín, M.; Trout, J.M.; Xiao, L.; Zhou, L.; Greiner, E.; Fayer, R. Prevalence and age-related variation of *Cryptosporidium* species and genotypes in dairy calves. *Vet. Parasitol.* **2004**, *122*, 103–117. [[CrossRef](#)] [[PubMed](#)]

13. Cho, Y.-I.; Yoon, K.-J. An overview of calf diarrhea—Infectious etiology, diagnosis, and intervention. *J. Vet. Sci.* **2014**, *15*, 1–17. [[CrossRef](#)] [[PubMed](#)]
14. Feng, Y.; Ryan, U.M.; Xiao, L. Genetic Diversity and Population Structure of *Cryptosporidium*. *Trends Parasitol.* **2018**, *34*, 997–1011. [[CrossRef](#)] [[PubMed](#)]
15. de Graaf, D.C.; Vanopdenbosch, E.; Ortega-Mora, L.-M.; Abbassi, H.; Peeters, J.E. A review of the importance of cryptosporidiosis in farm animals. *Int. J. Parasitol.* **1999**, *29*, 1269–1287. [[CrossRef](#)]
16. Shaw, H.J.; Innes, E.A.; Morrison, L.J.; Katzer, F.; Wells, B. Long-term production effects of clinical cryptosporidiosis in neonatal calves. *Int. J. Parasitol.* **2020**, *50*, 371–376. [[CrossRef](#)]
17. Gunn, G.; Stott, A.W. A Comparison of Economic Losses Due to Calf Enteritis and Calf Pneumonia in Northern Scotland. *Epidemiol. Santé Anim.* **1997**, 31–32.
18. Hawkins, A.; Burdine, K.; Amaral-Phillips, D.; Costa, J.H. An Economic Analysis of the Costs Associated with Pre-Weaning Management Strategies for Dairy Heifers. *Animals* **2019**, *9*, 471. [[CrossRef](#)]
19. Bennett, R. The 'Direct Costs' of Livestock Disease: The Development of a System of Models for the Analysis of 30 Endemic Livestock Diseases in Great Britain. *J. Agric. Econ.* **2003**, *54*, 55–71. [[CrossRef](#)]
20. Widmer, G.; Carmena, D.; Kváč, M.; Chalmers, R.M.; Kissinger, J.C.; Xiao, L.; Sateriale, A.; Striepen, B.; Laurent, F.; Lacroix-Lamandé, S.; et al. Update on *Cryptosporidium* spp.: Highlights from the Seventh International Giardia and Cryptosporidium Conference. *Parasite* **2020**, *27*, 14. [[CrossRef](#)]
21. Chalmers, R.; Giles, M. Zoonotic cryptosporidiosis in the UK—Challenges for control. *J. Appl. Microbiol.* **2010**, *109*, 1487–1497. [[CrossRef](#)] [[PubMed](#)]
22. Dong, S.; Yang, Y.; Wang, Y.; Yang, D.; Yang, Y.; Shi, Y.; Li, C.; Li, L.; Chen, Y.; Jiang, Q.; et al. Prevalence of *Cryptosporidium* Infection in the Global Population: A Systematic Review and Meta-analysis. *Acta Parasitol.* **2020**, *65*, 882–889. [[CrossRef](#)] [[PubMed](#)]
23. Abeywardena, H.; Jex, A.R.; Gasser, R.B. A Perspective on *Cryptosporidium* and *Giardia*, with an Emphasis on Bovines and Recent Epidemiological Findings. *Adv. Parasitol.* **2015**, *88*, 243–301. [[CrossRef](#)] [[PubMed](#)]
24. Pinto, P.; Ribeiro, C.A.; Hoque, S.; Hammouma, O.; Leruste, H.; Détriché, S.; Canniere, E.; Daandels, Y.; Dellevoet, M.; Roemen, J.; et al. Cross-Border Investigations on the Prevalence and Transmission Dynamics of *Cryptosporidium* Species in Dairy Cattle Farms in Western Mainland Europe. *Microorganisms* **2021**, *9*, 2394. [[CrossRef](#)] [[PubMed](#)]
25. Plutzer, J.; Lassen, B.; Jokelainen, P.; Djurkovic-Djakovic, O.; Kucsera, I.; Dorbek-Kolin, E.; Šoba, B.; Sréter, T.; Imre, K.; Omeragić, J.; et al. Review of *Cryptosporidium* and *Giardia* in the eastern part of Europe, 2016. *Eurosurveillance* **2018**, *23*, 16-00825. [[CrossRef](#)] [[PubMed](#)]
26. Cacciò, S.M.; Chalmers, R.M. Human cryptosporidiosis in Europe. *Clin. Microbiol. Infect.* **2016**, *22*, 471–480. [[CrossRef](#)]
27. Smith, R.; Clifton-Hadley, F.; Cheney, T.; Giles, M. Prevalence and molecular typing of *Cryptosporidium* in dairy cattle in England and Wales and examination of potential on-farm transmission routes. *Vet. Parasitol.* **2014**, *204*, 111–119. [[CrossRef](#)]
28. Ziegler, P.E.; Santucci, F.; Lindergard, G.; Nydam, D.V.; Wade, S.E.; Schaaf, S.L.; Chang, Y.-F.; Mohammed, H.O. Evaluation of polymerase chain reaction diagnosis of *Cryptosporidium* spp. in dairy cattle and wildlife. *Vet. Ther. Res. Appl. Vet. Med.* **2007**, *8*, 148.
29. Alves, M.; Xiao, L.; Sulaiman, I.; Lal, A.A.; Matos, O.; Antunes, F. Subgenotype Analysis of *Cryptosporidium* Isolates from Humans, Cattle, and Zoo Ruminants in Portugal. *J. Clin. Microbiol.* **2003**, *41*, 2744–2747. [[CrossRef](#)]
30. Sulaiman, I.M.; Hira, P.R.; Zhou, L.; Al-Ali, F.M.; Al-Shelahi, F.A.; Shweiki, H.M.; Iqbal, J.; Khalid, N.; Xiao, L. Unique Endemicity of Cryptosporidiosis in Children in Kuwait. *J. Clin. Microbiol.* **2005**, *43*, 2805–2809. [[CrossRef](#)]
31. Yildirim, A.; Adanir, R.; Inci, A.; Yukari, B.A.; Duzlu, O.; Onder, Z.; Ciloglu, A.; Simsek, E. Prevalence and genotyping of bovine *Cryptosporidium* species in the Mediterranean and Central Anatolia Region of Turkey. *Comp. Immunol. Microbiol. Infect. Dis.* **2020**, *69*, 101425. [[CrossRef](#)] [[PubMed](#)]
32. Güven, E.; Avcioglu, H.; Balkaya, I.; Hayirli, A.; Kar, S.; Karaer, Z. Prevalence of Cryptosporidiosis and Molecular Characterization of *Cryptosporidium* spp. in Calves in Erzurum. *Kafkas Univ. Vet. Fak. Derg.* **2013**, *19*, 969–974.
33. Yildirim, A.; Sevinc, F.; Onder, Z.; Duzlu, O.; Ekici, O.D.; Isik, N.; Ciloglu, A.; Simsek, E.; Yetismis, G.; Inci, A. Comparison of three diagnostic methods in the diagnosis of cryptosporidiosis and gp60 subtyping of *Cryptosporidium parvum* in diarrheic calves in Central Anatolia Region of Turkey. *EuroBiotech J.* **2021**, *5*, 63–69. [[CrossRef](#)]
34. Mankolli, H. International Journal of Ecosystems and Ecology Science (IJEES). *Int. J. Ecosyst. Ecol. Sci. (IJEES)* **2022**, *10*, 271–276. [[CrossRef](#)]
35. Bin Kabir, M.H.; Ceylan, O.; Ceylan, C.; Shehata, A.A.; Bando, H.; Essa, M.I.; Xuan, X.; Sevinc, F.; Kato, K. Molecular detection of genotypes and subtypes of *Cryptosporidium* infection in diarrheic calves, lambs, and goat kids from Turkey. *Parasitol. Int.* **2020**, *79*, 102163. [[CrossRef](#)]
36. Naguib, D.; Elgohary, A.; Mohamed, A.A.; Roellig, D.M.; Arafat, N.; Xiao, L. Age patterns of *Cryptosporidium* species and *Giardia duodenalis* in dairy calves in Egypt. *Parasitol. Int.* **2018**, *67*, 736–741. [[CrossRef](#)]
37. Amer, S.; Honma, H.; Ikarashi, M.; Tada, C.; Fukuda, Y.; Suyama, Y.; Nakai, Y. *Cryptosporidium* genotypes and subtypes in dairy calves in Egypt. *Vet. Parasitol.* **2010**, *169*, 382–386. [[CrossRef](#)]
38. Ibrahim, M.A.; Abdel-Ghany, A.E.; Abdel-Latef, G.K.; Abdel-Aziz, S.A.; Aboelhadid, S.M. Epidemiology and public health significance of *Cryptosporidium* isolated from cattle, buffaloes, and humans in Egypt. *Parasitol. Res.* **2016**, *115*, 2439–2448. [[CrossRef](#)]

39. Amer, S.; Zidan, S.; Adamu, H.; Ye, J.; Roellig, D.; Xiao, L.; Feng, Y. Prevalence and characterization of *Cryptosporidium* spp. in dairy cattle in Nile River delta provinces, Egypt. *Exp. Parasitol.* **2013**, *135*, 518–523. [[CrossRef](#)]
40. Mahfouz, M.E.; Mira, N.; Amer, S. Prevalence and Genotyping of *Cryptosporidium* spp. in Farm Animals in Egypt. *J. Vet. Med. Sci.* **2014**, *76*, 1569–1575. [[CrossRef](#)]
41. Hijawi, N.; Mukbel, R.; Yang, R.; Ryan, U. Genetic characterization of *Cryptosporidium* in animal and human isolates from Jordan. *Vet. Parasitol.* **2016**, *228*, 116–120. [[CrossRef](#)] [[PubMed](#)]
42. Giadinis, N.D.; Symeoudakis, S.; Papadopoulos, E.; Lafi, S.Q.; Karatzias, H. Comparison of two techniques for diagnosis of cryptosporidiosis in diarrhoeic goat kids and lambs in Cyprus. *Trop. Anim. Health Prod.* **2012**, *44*, 1561–1565. [[CrossRef](#)] [[PubMed](#)]
43. Jagai, J.S.; Castronovo, D.A.; Monchak, J.; Naumova, E.N. Seasonality of cryptosporidiosis: A meta-analysis approach. *Environ. Res.* **2009**, *109*, 465–478. [[CrossRef](#)]
44. Lal, A.; Baker, M.G.; Hales, S.; French, N. Potential effects of global environmental changes on cryptosporidiosis and giardiasis transmission. *Trends Parasitol.* **2013**, *29*, 83–90. [[CrossRef](#)] [[PubMed](#)]
45. Szonyi, B.; Bordonaro, R.; Wade, S.E.; Mohammed, H.O. Seasonal variation in the prevalence and molecular epidemiology of *Cryptosporidium* infection in dairy cattle in the New York City Watershed. *Parasitol. Res.* **2010**, *107*, 317–325. [[CrossRef](#)] [[PubMed](#)]
46. Helmy, Y.A.; Krücken, J.; Nöckler, K.; von Samson-Himmelstjerna, G.; Zessin, K.-H. Molecular epidemiology of *Cryptosporidium* in livestock animals and humans in the Ismailia province of Egypt. *Vet. Parasitol.* **2013**, *193*, 15–24. [[CrossRef](#)]
47. Yasur-Landau, D.; Zilberberg, M.; Markovich, M.P.; Behar, A.; Fleiderovitz, L.; Mazuz, M.L. *Cryptosporidium parvum* subtypes from diarrheic dairy calves in Israel. *Vet. Parasitol. Reg. Stud. Rep.* **2021**, *25*, 100608. [[CrossRef](#)]
48. Kassouha, M.; Soukkarieh, C.; Alkhaled, A. First genotyping of *Cryptosporidium* spp. in pre-weaned calves, broiler chickens and children in Syria by PCR-RFLP analysis. *Vet. Parasitol.* **2016**, *225*, 86–90. [[CrossRef](#)]
49. Zahedi, A.; Gofton, A.W.; Jian, F.; Paparini, A.; Oskam, C.; Ball, A.; Robertson, I.; Ryan, U. Next Generation Sequencing uncovers within-host differences in the genetic diversity of *Cryptosporidium gp60* subtypes. *Int. J. Parasitol.* **2017**, *47*, 601–607. [[CrossRef](#)]
50. Dettwiler, I.; Troell, K.; Robinson, G.; Chalmers, R.M.; Basso, W.; Rentería-Solís, Z.M.; Dauschies, A.; Mühlethaler, K.; Dale, M.I.; Raghavendra, J.B.; et al. TIDE Analysis of *Cryptosporidium* Infections by Gp60 Typing Reveals Obscured Mixed Infections. *J. Infect. Dis.* **2022**, *15*, 686–695. [[CrossRef](#)]
51. Amer, S.; Zidan, S.; Feng, Y.; Adamu, H.; Li, N.; Xiao, L. Identity and public health potential of *Cryptosporidium* spp. in water buffalo calves in Egypt. *Vet. Parasitol.* **2013**, *191*, 123–127. [[CrossRef](#)] [[PubMed](#)]
52. Feng, Y.; Li, N.; Roellig, D.M.; Kelley, A.; Liu, G.; Amer, S.; Tang, K.; Zhang, L.; Xiao, L. Comparative genomic analysis of the IId subtype family of *Cryptosporidium parvum*. *Int. J. Parasitol.* **2017**, *47*, 281–290. [[CrossRef](#)]
53. Lichtmannsperger, K.; Harl, J.; Freudenthaler, K.; Hinney, B.; Wittek, T.; Joachim, A. *Cryptosporidium parvum*, *Cryptosporidium ryanae*, and *Cryptosporidium bovis* in samples from calves in Austria. *Parasitol. Res.* **2020**, *119*, 4291–4295. [[CrossRef](#)] [[PubMed](#)]
54. Lichtmannsperger, K.; Hinney, B.; Joachim, A.; Wittek, T. Molecular characterization of *Giardia intestinalis* and *Cryptosporidium parvum* from calves with diarrhoea in Austria and evaluation of point-of-care tests. *Comp. Immunol. Microbiol. Infect. Dis.* **2019**, *66*, 101333. [[CrossRef](#)] [[PubMed](#)]
55. Santoro, A.; Dorbek-Kolin, E.; Jeremejeva, J.; Tummeleht, L.; Orro, T.; Jokelainen, P.; Lassen, B. Molecular epidemiology of *Cryptosporidium* spp. in calves in Estonia: High prevalence of *Cryptosporidium parvum* shedding and 10 subtypes identified. *Parasitology* **2019**, *146*, 261–267. [[CrossRef](#)] [[PubMed](#)]
56. Kaupke, A.; Rzeżutka, A. Emergence of novel subtypes of *Cryptosporidium parvum* in calves in Poland. *Parasitol. Res.* **2015**, *114*, 4709–4716. [[CrossRef](#)]
57. Holzhausen, I.; Lendner, M.; Göhring, F.; Steinhöfel, I.; Dauschies, A. Distribution of *Cryptosporidium parvum gp60* subtypes in calf herds of Saxony, Germany. *Parasitol. Res.* **2019**, *118*, 1549–1558. [[CrossRef](#)]
58. Robertson, L.J.; Temesgen, T.T.; Tysnes, K.R.; Eikås, J.E. An apple a day: An outbreak of cryptosporidiosis in Norway associated with self-pressed apple juice. *Epidemiol. Infect.* **2019**, *147*, e139. [[CrossRef](#)]
59. Garcia-R, J.C.; Pita, A.B.; Velathanthiri, N.; French, N.P.; Hayman, D.T.S. Species and genotypes causing human cryptosporidiosis in New Zealand. *Parasitol. Res.* **2020**, *119*, 2317–2326. [[CrossRef](#)]
60. Herges, G.R.; Widmer, G.; Clark, M.E.; Khan, E.; Giddings, C.W.; Brewer, M.; McEvoy, J.M. Evidence that *Cryptosporidium parvum* Populations Are Panmictic and Unstructured in the Upper Midwest of the United States. *Appl. Environ. Microbiol.* **2012**, *78*, 8096–8101. [[CrossRef](#)]
61. Hailu, A.W.; Degarege, A.; Adamu, H.; Costa, D.; Villier, V.; Mouhajir, A.; Favennec, L.; Razakandrainibe, R.; Petros, B. Molecular characterization of *Cryptosporidium* spp. from humans in Ethiopia. *PLoS ONE* **2021**, *16*, e0253186. [[CrossRef](#)] [[PubMed](#)]
62. Soba, B.; Logar, J. Genetic classification of *Cryptosporidium* isolates from humans and calves in Slovenia. *Parasitology* **2008**, *135*, 1263–1270. [[CrossRef](#)]
63. Hatalová, E.; Valenčáková, A.; Luptáková, L.; Špalková, M.; Kalinová, J.; Halánová, M.; Bednárová, V.; Gab-zdilová, J.; Dedinská, K.; Ondriska, F.; et al. The First Report of Animal Genotypes of *Cryptosporidium parvum* in Immunosuppressed and Immunocompetent Humans in Slovakia. *Transbound. Emerg. Dis.* **2019**, *66*, 243–249. [[CrossRef](#)] [[PubMed](#)]
64. Smith, R.P.; Newton, K.; Rindap, E.; Wight, A.; Robinson, G.; Chalmers, R.M. Review of investigations of premises housing animals that were linked to human outbreaks of cryptosporidiosis in England and Wales between 2009 and 2019. *Vet. Rec.* **2021**, *189*, e246. [[CrossRef](#)] [[PubMed](#)]
65. Xiao, L. Molecular epidemiology of cryptosporidiosis: An update. *Exp. Parasitol.* **2010**, *124*, 80–89. [[CrossRef](#)]

66. Arslan, M.Ö.; Ekinçi, A.I. Kars Yöresinde Sığırlarda *Cryptosporidium parvum* Subtiplerinin Belirlenmesi. *Kafkas Univ. Vet. Fak. Derg.* **2014**, *20*, 329. [[CrossRef](#)]
67. Silverlås, C.; Näslund, K.; Björkman, C.; Mattsson, J.G. Molecular characterisation of *Cryptosporidium* isolates from Swedish dairy cattle in relation to age, diarrhoea and region. *Vet. Parasitol.* **2010**, *169*, 289–295. [[CrossRef](#)]
68. Kváč, M.; Hromadová, N.; Květoňová, D.; Rost, M.; Sak, B. Molecular characterization of *Cryptosporidium* spp. in pre-weaned dairy calves in the Czech Republic: Absence of *C. ryanae* and management-associated distribution of *C. andersoni*, *C. bovis* and *C. parvum* subtypes. *Vet. Parasitol.* **2011**, *177*, 378–382. [[CrossRef](#)]
69. Deshpande, A.P.; Jones, B.L.; Connelly, L.; Pollock, K.G.; Brownlie, S.; Alexander, C.L. Molecular characterization of *Cryptosporidium parvum* isolates from human cryptosporidiosis cases in Scotland. *Parasitology* **2015**, *142*, 318–325. [[CrossRef](#)]
70. Chalmers, R.M.; Robinson, G.; Elwin, K.; Elson, R. Analysis of the *Cryptosporidium* spp. and *gp60* subtypes linked to human outbreaks of cryptosporidiosis in England and Wales, 2009 to 2017. *Parasites Vectors* **2019**, *12*, 95. [[CrossRef](#)]
71. Waldron, L.S.; Dimeski, B.; Beggs, P.; Ferrari, B.; Power, M.L. Molecular Epidemiology, Spatiotemporal Analysis, and Ecology of Sporadic Human Cryptosporidiosis in Australia. *Appl. Environ. Microbiol.* **2011**, *77*, 7757–7765. [[CrossRef](#)] [[PubMed](#)]
72. Osman, M.; El Safadi, D.; Benamrouz, S.; Guyot, K.; Dei-Cas, E.; Aliouat, E.M.; Creusy, C.; Mallat, H.; Hamze, M.; Dabboussi, F.; et al. Initial Data on the Molecular Epidemiology of Cryptosporidiosis in Lebanon. *PLoS ONE* **2015**, *10*, e0125129. [[CrossRef](#)] [[PubMed](#)]
73. Xiao, L.; Zhou, L.; Santin, M.; Yang, W.; Fayer, R. Distribution of *Cryptosporidium parvum* subtypes in calves in eastern United States. *Parasitol. Res.* **2006**, *100*, 701–706. [[CrossRef](#)] [[PubMed](#)]
74. Thompson, H.P.; Dooley, J.; Kenny, J.; McCoy, M.; Lowery, C.J.; Moore, J.E.; Xiao, L. Genotypes and subtypes of *Cryptosporidium* spp. in neonatal calves in Northern Ireland. *Parasitol. Res.* **2006**, *100*, 619–624. [[CrossRef](#)] [[PubMed](#)]
75. Broglia, A.; Reckinger, S.; Cacció, S.; Nöckler, K. Distribution of *Cryptosporidium parvum* subtypes in calves in Germany. *Vet. Parasitol.* **2008**, *154*, 8–13. [[CrossRef](#)]
76. Duranti, A.; Cacciò, S.M.; Pozio, E.; Di Egidio, A.; De Curtis, M.; Battisti, A.; Scaramozzino, P. Risk Factors Associated with *Cryptosporidium parvum* Infection in Cattle. *Zoonoses Public Health* **2009**, *56*, 176–182. [[CrossRef](#)]
77. Feltus, D.C.; Giddings, C.W.; Schneck, B.L.; Monson, T.; Warshauer, D.; McEvoy, J.M. Evidence Supporting Zoonotic Transmission of *Cryptosporidium* spp. in Wisconsin. *J. Clin. Microbiol.* **2006**, *44*, 4303–4308. [[CrossRef](#)]
78. Nolan, M.J.; Jex, A.R.; Mansell, P.D.; Browning, G.F.; Gasser, R.B. Genetic characterization of *Cryptosporidium parvum* from calves by mutation scanning and targeted sequencing—Zoonotic implications. *Electrophoresis* **2009**, *30*, 2640–2647. [[CrossRef](#)]
79. European Centre for Disease Prevention and Control. Cryptosporidiosis. In *Annual Epidemiological Report for 2018*; ECDC: Stockholm, Sweden, 2021.