



Kent Academic Repository

Zhou, Jiandong, Lee, Sharen, Leung, Keith Sai Kit, Wai, Abraham Ka Chung, Liu, Tong, Liu, Ying, Chang, Dong, Wong, Wing Tak, Wong, Ian Chi Kei, Cheung, Bernard Man Yung and others (2022) *Incident heart failure and myocardial infarction in sodiumglucose cotransporter2 vs. dipeptidyl peptidase4 inhibitor users*. *ESC Heart Failure*, 9 (2). pp. 1388-1399. ISSN 2055-5822.

Downloaded from

<https://kar.kent.ac.uk/93776/> The University of Kent's Academic Repository KAR

The version of record is available from

<https://doi.org/10.1002/ehf2.13830>

This document version

Publisher pdf

DOI for this version

Licence for this version

CC BY (Attribution)

Additional information

Article version: From Crossref journal articles via Jisc Publications History: epub 07-02-2022;issued Licence for VoR version of this article starting on 07-02-2022: <http://creativecommons.org/licenses/by/4.0/>

Versions of research works

Versions of Record

If this version is the version of record, it is the same as the published version available on the publisher's web site. Cite as the published version.



Author Accepted Manuscripts

If this document is identified as the Author Accepted Manuscript it is the version after peer review but before type setting, copy editing or publisher branding. Cite as Surname, Initial. (Year) 'Title of article'. To be published in *Title of Journal*, Volume and issue numbers [peer-reviewed accepted version]. Available at: DOI or URL (Accessed: date).

Enquiries

If you have questions about this document contact ResearchSupport@kent.ac.uk. Please include the URL of the record in KAR. If you believe that your, or a third party's rights have been compromised through this document please see our [Take Down policy](https://www.kent.ac.uk/guides/kar-the-kent-academic-repository#policies) (available from <https://www.kent.ac.uk/guides/kar-the-kent-academic-repository#policies>).

Incident heart failure and myocardial infarction in sodium-glucose cotransporter-2 vs. dipeptidyl peptidase-4 inhibitor users

Jiandong Zhou^{1†}, Sharen Lee^{2†} , Keith Sai Kit Leung³, Abraham Ka Chung Wai³, Tong Liu⁴, Ying Liu⁵, Dong Chang⁶, Wing Tak Wong⁷, Ian Chi Kei Wong⁸, Bernard Man Yung Cheung⁹, Qingpeng Zhang^{10*} and Gary Tse^{11,2,4,5*} 

¹Nuffield Department of Medicine, University of Oxford, Oxford, UK; ²Diabetes Research Unit, Cardiovascular Analytics Group, Hong Kong, China; ³Emergency Medicine Unit, Faculty of Medicine, The University of Hong Kong, Hong Kong, China; ⁴Tianjin Key Laboratory of Ionic-Molecular Function of Cardiovascular Disease, Department of Cardiology, Tianjin Institute of Cardiology, Second Hospital of Tianjin Medical University, Tianjin, China; ⁵Department of Cardiology, The First Affiliated Hospital of Dalian Medical University, Dalian, China; ⁶Xiamen Cardiovascular Hospital, Xiamen University, Xiamen, China; ⁷School of Life Sciences, State Key Laboratory of Agrobiotechnology (CUHK), The Chinese University of Hong Kong, Hong Kong, China; ⁸Department of Pharmacology and Pharmacy, University of Hong Kong, Hong Kong, China; ⁹Division of Clinical Pharmacology and Therapeutics, Department of Medicine, The University of Hong Kong, Hong Kong, China; ¹⁰School of Data Science, City University of Hong Kong, Hong Kong, China; ¹¹Kent and Medway Medical School, Canterbury, Kent, UK

Abstract

Aims This study aimed to compare the rates of major cardiovascular adverse events in sodium-glucose cotransporter-2 inhibitors (SGLT2i) and dipeptidyl peptidase-4 inhibitors (DPP4i) users in a Chinese population. SGLT2i and DPP4i are increasingly prescribed for type 2 diabetes mellitus patients. However, few population-based studies are comparing their effects on incident heart failure or myocardial infarction.

Methods and results This was a population-based retrospective cohort study using the electronic health record database in Hong Kong, including type 2 diabetes mellitus patients receiving either SGLT2i or DPP4i from 1 January 2015 to 31 December 2020. Propensity score matching was performed in a 1:1 ratio based on demographics, past comorbidities, and non-SGLT2i/DPP4i medications with nearest neighbour matching (caliper = 0.1). Univariable and multivariable Cox models were used to identify significant predictors for new-onset heart failure, new-onset myocardial infarction, cardiovascular mortality, and all-cause mortality. Sensitivity analyses with competing risk models and multiple propensity score matching approaches were conducted. A total of 41 994 patients (58.89% males, median admission age at 58 years old, interquartile range [IQR]: 51.2–65.3) were included with a median follow-up of 5.6 years (IQR: 5.32–5.82). In the matched cohort, SGLT2i use was significantly associated with lower risks of new-onset heart failure (hazard ratio [HR]: 0.73, 95% confidence interval [CI]: [0.66, 0.81], $P < 0.0001$), myocardial infarction (HR: 0.81, 95% CI: [0.73, 0.90], $P < 0.0001$), cardiovascular mortality (HR: 0.67, 95% CI: [0.53, 0.84], $P < 0.001$), and all-cause mortality (HR: 0.26, 95% CI: [0.24, 0.29], $P < 0.0001$) after adjusting for significant demographics, past comorbidities, and non-SGLT2i/DPP4i medications.

Conclusions SGLT2 inhibitors are protective against adverse cardiovascular events including new-onset heart failure, myocardial infarction, cardiovascular mortality, and all-cause mortality. The prescription of SGLT2i is preferred when taken into consideration individual cardiovascular and metabolic risk profiles in addition to drug–drug interactions.

Keywords Sodium-glucose co-transporter; Heart failure; Myocardial infarction; Diabetes mellitus

Received: 12 January 2022; Accepted: 16 January 2022

*Correspondence to: Qingpeng Zhang, School of Data Science, City University of Hong Kong, Hong Kong, China. Tel: +852 34424727. Email: qingpeng.zhang@cityu.edu.hk
Gary Tse, Tianjin Institute of Cardiology, The Second Hospital of Tianjin Medical University, Tianjin 300211, China; Kent and Medway Medical School, Canterbury, Kent, UK.
Email: gary.tse@kmmms.ac.uk

†These authors are joint first authors.

Introduction

Diabetes mellitus is an increasingly prevalent metabolic disease, currently affecting more than 400 million people, and the patient population is projected to increase up to 642 million by 2040.¹ Given the ever-increasing disease burden, new classes of antidiabetic agents have been introduced into the market over the past decade. The use of two novel classes of antidiabetic agents—sodium-glucose cotransporter-2 inhibitors (SGLT2i) and dipeptidyl peptidase-4 inhibitors (DPP4i)—has increased significantly.^{2,3} Besides their favourable side effect profile, studies have reported beneficial effects on metabolic risk from these two classes of drugs.⁴ Based on findings from large-scale clinical trials, the cardiovascular mortality-lowering effects of SGLT2i are mostly attributed to its protection against heart failure (HF).^{5–8} On the other hand, the cardiovascular effect of DPP4i appears to be more controversial. Whilst there were reports of DPP4i users having lower cardiovascular risks than non-users, there are also studies reporting an increased risk of HF in saxagliptin users.^{9,10}

Whilst small-scale trials are comparing the metabolic effects or specific disease outcomes of SGLT2i and DPP4i, there is a lack of large-scale population studies to evaluate the difference in the presentation of major cardiovascular adverse events between the use of the two drug classes.^{11–13} Recently, Zheng *et al.* have demonstrated lower mortality in SGLT2i users in comparison with DPP4i users in a network meta-analysis.¹⁴ However, ultimately, the study is limited by the indirect comparison of the SGLT2i and DPP4i users. Other studies have reported on outcomes such as weight loss, improvement in the liver or renal function,¹⁵ and reduction in atrial fibrillation incidence.¹⁶ Another study recently investigated cardiovascular outcomes such as HF and myocardial infarction (MI), but only in Japanese, Korean, and European cohorts.¹⁷ Therefore, the aim of the present study is to compare the occurrence of major cardiovascular adverse events in SGLT2i and DPP4i users to evaluate their cardiovascular protective effects in a Chinese population.

Methods

Study design and population

This study was approved by the Institutional Review Board of the University of Hong Kong/Hospital Authority Hong Kong West Cluster and from The Joint Chinese University of Hong Kong–New Territories East Cluster Clinical Research Ethics Committee. It included type 2 diabetes mellitus patients with SGLT2i or DPP4i prescriptions from 1 January 2015 to 31 December 2020. Patients who received both DPP4i and SGLT2i, in addition to patients who discontinued the medication dur-

ing the study, were excluded. The exclusion criteria for the HF study cohort were as follows: patients with prior HF diagnosis or with the use of medications for HF (e.g. diuretics for HF and beta-blockers for HF). For the MI study cohort, patients with prior old MI or MI diagnosis were excluded. The patients were identified from the Clinical Data Analysis and Reporting System (CDARS), a territory-wide database that centralizes patient information from individual local hospitals to establish comprehensive medical data, including clinical characteristics, disease diagnosis, laboratory results, and drug treatment details. The system has been previously used by both our team and other teams in Hong Kong to conduct population-based cohort studies,^{18,19} including those on diabetes mellitus.^{20,21}

Clinical and biochemical data were extracted from CDARS for the present study. Patients' demographics include sex and age of initial drug use (baseline). Prior comorbidities before initial drug use were extracted, including diabetes with chronic complication, diabetes without chronic complication, gout, hypertension, ischaemic heart disease, liver diseases, peripheral vascular disease, renal diseases, stroke/transient ischaemic attack, atrial fibrillation, ventricular tachycardia (VT)/ventricular fibrillation (VF)/aborted sudden cardiac death (SCD), anaemia, overweight, and cancer. Charlson's standard comorbidity index was also calculated. Mortality was recorded using the *International Classification of Diseases Tenth Edition* (ICD-10) coding, whilst the study outcomes and comorbidities were documented in CDARS under ICD-9 codes. The ICD codes used to search for diagnoses and outcomes are shown in Supporting Information, *Table S1*.

Non-SGLT2i/DPP4i medications were also extracted, including metformin, sulphonylurea, insulin, acarbose, thiazolidinedione, glucagon-like peptide-1 receptor agonists, and statins and fibrates. A limited number of enrolled patients have been prescribed calcium channel blockers; thus, they were not considered. Baseline laboratory data were extracted. Subclinical biomarkers were calculated accordingly, including neutrophil-to-lymphocyte ratio, platelet-to-lymphocyte ratio, neutrophil-to-high-density lipoprotein ratio, lymphocyte-to-high-density lipoprotein ratio, lymphocyte-to-low-density lipoprotein ratio, low-density lipoprotein ratio-to-high-density lipoprotein ratio, total cholesterol-to-high-density lipoprotein ratio, triglyceride-glucose index, bilirubin-to-albumin ratio, protein-to-creatinine ratio, and prognostic nutritional index.

Standard deviation (SD) was calculated for glycaemic and lipid profile parameters once there are at least three examinations for each patient since initial drug exposure of SGLT2i or DPP4i. We also calculated more specific variability measures for HbA1c and fasting glucose profiles including SD, SD/initial, coefficient of variation (CV), and variability independent of mean as listed in Supporting Information, *Table S2*.

Outcomes and statistical analysis

The study outcomes are new-onset HF, and new-onset MI, cardiovascular mortality, and all-cause mortality as defined by the first incidence of ICD-9 codes of these adverse events (Supporting Information, *Table S1*). Mortality data were obtained from the Hong Kong Death Registry, a population-based official government registry with the registered death records of all Hong Kong citizens linked to CDARS. ICD-10 codes I00–I09, I11, I13, and I20–I51 were used to identify cardiovascular mortality. Descriptive statistics are used to summarize baseline clinical and biochemical characteristics of patients with SGLT2i and DPP4i use. For baseline clinical characteristics, the continuous variables were presented as median (95% confidence interval [CI]/interquartile range [IQR]) or mean (SD) and the categorical variables were presented as total number (percentage). Continuous variables were compared using the two-tailed Mann–Whitney *U* test, whilst the two-tailed χ^2 test with Yates' correction was used to test 2×2 contingency data. Univariable Cox regression was used to identify significant predictors for the primary and secondary outcomes. Propensity score matching was performed to generate control of SGLT2i users to compare against DPP4i users in a 1:1 ratio based on baseline age, sex, prior comorbidities, and non-SGLT2i/DPP4i medications using nearest neighbour matching strategy.

Multivariable Cox models adjusting for significant risk factors of demographics, past comorbidities, non-SGLT2i/DPP4i medications, subclinical biomarkers, HbA1c, and fasting glucose to identify the treatment effects of SGLT2i vs. DPP4i on the mentioned adverse outcomes. Cause-specific and subdistribution hazard models were conducted to consider possible competing risks. Lastly, subgroup analyses were done on age (≤ 65 and > 65 years) and sex on drug exposure effects. A standardized mean difference (SMD) of no < 0.2 between the treatment groups post-weighting was considered negligible. The hazard ratio (HR), 95% CI, and *P*-value were reported. Statistical significance is defined as *P*-value < 0.05 . The statistical analysis was performed with RStudio software (Version 1.1.456) and Python (Version 3.6).

Results

Baseline characteristics

In this study, patients with type 2 diabetes mellitus and use of either SGLT2i or DPP4i from 1 January 2015 to 31 December 2020 were included (*Table 1*). Patients with the use of both classes, or with prior HF diagnoses or admissions due to HF or with anti-HF drugs (e.g. beta-blockers for HF and diuretics for HF), were excluded. After exclusion, 41 994 patients (58.89% males, median admission age at 58 years old, IQR:

51.2–65.3) fulfilled the eligibility criteria in the study cohort for subsequent analysis (*Figure 1*). The study cohort has a median follow-up duration of 5.6 years (IQR: 5.32–5.82). Propensity score matching (1:1) between SGLT2i and DPP4i users using the nearest neighbour search strategy with a 0.1 caliper was performed (Supporting Information, *Figure S1*). Bootstrapping procedures were performed for propensity matching estimates, and the estimations of bootstrapped standard error (replications = 50) were < 0.001 . Together, these indicated no significant confounding characteristics remained significant after propensity matching.

Significant predictors of the study outcomes

The cumulative incidence curves for new-onset HF, MI, cardiovascular mortality, and all-cause mortality stratified by SGLT2i or DPP4i use for the matched cohort are shown in *Figure 2*. Lower incidences of all of these outcomes were observed for SGLT2i users compared with DPP4i users. Univariable Cox regression was applied to identify significant predictors of the study outcomes (Supporting Information, *Tables S2* and *S3*). In the matched cohort, SGLT2i use was associated with significantly lower risks of new-onset HF (HR: 0.52, 95% CI: [0.48, 0.58], $P < 0.0001$), new-onset MI (HR: 0.60, 95% CI: [0.54, 0.66], $P < 0.0001$), cardiovascular mortality (HR: 0.23, 95% CI: [0.18, 0.28], $P < 0.0001$), and all-cause mortality (HR: 0.23, 95% CI: [0.21, 0.26], $P < 0.0001$). Multivariable Cox models were developed adjusting for significant demographics, past comorbidities, and medications (*Table 2*). SGLT2i use remained a significant predictor of all four study outcomes (HR < 1 , $P < 0.001$).

To evaluate the predictiveness of the models, different sensitivity analyses were performed. Firstly, a 1 year lag time between treatment initiation and study outcomes was applied (Supporting Information, *Table S4*). Secondly, competing risk analyses using cause-specific hazard models and subdistribution hazard models were applied (Supporting Information, *Table S5*). Thirdly, different propensity score approaches were used to evaluate the effects of the matching approach on the analysis, including propensity score stratification, inverse probability of treatment weighting (IPTW), and stable inverse probability of treatment weighting (SIPTW) (Supporting Information, *Table S6*). All of these analyses demonstrated that SGLT2i use was associated with lower risks of new-onset HF, MI, cardiovascular mortality, and all-cause mortality.

Discussion

The main finding of the present study is that using DPP4i as a reference, SGLT2i use was associated with a lower risk of

Table 1 Baseline and clinical characteristics of patients with SGLT2i vs. DPP4i uses before and after propensity score matching (1:1)

Characteristics	Before matching				SMD
	All (N = 59 457) Mean (SD); N or count (%)	SGLT2i users (N = 20 997) Mean (SD); N or count (%)	DPP4i users (N = 38 460) Mean (SD); N or count (%)		
Outcomes					
All-cause mortality	6143 (10.33%)	527 (2.50%)	5616 (14.60%)	0.44*	
Cardiovascular mortality	1863 (3.13%)	105 (0.50%)	1758 (4.57%)	0.26*	
Myocardial infarction	2610 (4.38%)	631 (3.00%)	1979 (5.14%)	0.11	
Heart failure	3489 (5.86%)	638 (3.03%)	2851 (7.41%)	0.2	
Demographics					
Male gender	32 686 (54.97%)	12 403 (59.07%)	20 283 (52.73%)	0.13	
Baseline age, years	62.9 (12.8); n = 59 457	57.5 (11.3); n = 20 997	65.8 (12.7); n = 38 460	0.69*	
<50	8572 (14.41%)	4700 (22.38%)	3872 (10.06%)	0.34*	
[50–60]	16 503 (27.75%)	7545 (35.93%)	8958 (23.29%)	0.28*	
[60–70]	17 357 (29.19%)	6167 (29.37%)	11 190 (29.09%)	0.01	
[70–80]	10 748 (18.07%)	2119 (10.09%)	8629 (22.43%)	0.34*	
>80	6282 (10.56%)	469 (2.23%)	5813 (15.11%)	0.47*	
Past comorbidities					
Charlson's standard comorbidity index	2.0 (1.4); n = 59 457	1.5 (1.2); n = 20 997	2.3 (1.5); n = 38 460	0.62*	
Diabetes with chronic complication	597 (1.00%)	227 (1.08%)	370 (0.96%)	0.01	
Diabetes without chronic complication	1021 (1.71%)	441 (2.10%)	580 (1.50%)	0.04	
Gout	1463 (2.46%)	421 (2.00%)	1042 (2.70%)	0.05	
Hyperlipidaemia	1531 (2.57%)	727 (3.46%)	804 (2.09%)	0.08	
Hypertension	13 262 (22.30%)	4684 (22.30%)	8578 (22.30%)	<0.01	
Hypoglycaemia	442 (0.74%)	50 (0.23%)	392 (1.01%)	0.1	
Ischaemic heart disease	4069 (6.84%)	1962 (9.34%)	2107 (5.47%)	0.15	
Liver diseases	1278 (2.14%)	634 (3.01%)	644 (1.67%)	0.09	
Peripheral vascular disease	393 (0.66%)	98 (0.46%)	295 (0.76%)	0.04	
Renal diseases	972 (1.63%)	105 (0.50%)	867 (2.25%)	0.15	
Stroke/transient ischaemic attack	1842 (3.09%)	509 (2.42%)	1333 (3.46%)	0.06	
Atrial fibrillation	1017 (1.71%)	325 (1.54%)	692 (1.79%)	0.02	
V1/VT/aborted SCD	64 (0.10%)	29 (0.13%)	35 (0.09%)	0.01	
Anaemia	2229 (3.74%)	456 (2.17%)	1773 (4.60%)	0.14	
Overweight	395 (0.66%)	324 (1.54%)	71 (0.18%)	0.15	
Cancer	1611 (2.70%)	427 (2.03%)	1184 (3.07%)	0.07	
Medications					
SGLT2i vs. DPP4i	20 997 (35.31%)	20 997 (100.00%)	0 (0.00%)	inf*	
SGLT2i frequency	7.2 (9.7); n = 20 997	7.2 (9.7); n = 20 997	-	-	
DPP4i frequency	5.3 (7.4); n = 38 460	-	5.3 (7.4); n = 38 460	-	
SGLT2i duration, days	527.9 (670.1); n = 20 997	527.9 (670.1); n = 20 997	-	-	
DPP4i duration, days	490.7 (416.9); n = 38 460	-	490.7 (416.9); n = 38 460	-	
Metformin	53 053 (89.22%)	19 492 (92.83%)	33 561 (87.26%)	0.19	
Sulphonylurea	45 591 (76.67%)	14 675 (69.89%)	30 916 (80.38%)	0.24*	
Insulin	29 710 (49.96%)	10 746 (51.17%)	18 964 (49.30%)	0.04	
Acarbose	1505 (2.53%)	844 (4.01%)	661 (1.71%)	0.14	
Thiazolidinediones	11 448 (19.25%)	5960 (28.38%)	5488 (14.26%)	0.35*	
Glucagon-like peptide-1 receptor agonists	1693 (2.84%)	1521 (7.24%)	172 (0.44%)	0.36*	
Statins and fibrates	28 231 (47.48%)	15 189 (72.33%)	13 042 (33.91%)	0.83*	
Complete blood counts					
Haemoglobin, g/dL	13.1 (1.8); n = 30 341	13.7 (1.5); n = 12 023	12.7 (1.9); n = 18 318	0.57*	
Mean corpuscular volume, fL	87.2 (7.6); n = 29 824	86.7 (7.1); n = 11 897	87.6 (7.8); n = 17 927	0.12	

Table 1 (continued)

Characteristics	Before matching			SMD
	All (N = 59 457) Mean (SD); N or count (%)	SGLT2i users (N = 20 997) Mean (SD); N or count (%)	DPP4i users (N = 38 460) Mean (SD); N or count (%)	
Eosinophil, $\times 10^9/L$	0.2 (0.3); n = 23 887	0.21 (0.19); n = 9293	0.22 (0.28); n = 14 594	0.02
Lymphocyte, $\times 10^9/L$	2.0 (0.9); n = 23 910	2.2 (0.9); n = 9298	1.9 (0.9); n = 14 612	0.29*
Neutrophil, $\times 10^9/L$	5.3 (2.8); n = 23 910	5.1 (2.4); n = 9298	5.5 (3.1); n = 14 612	0.13
White cell count, $\times 10^9/L$	8.0 (3.0); n = 29 836	7.96 (2.62); n = 11 905	8.03 (3.24); n = 17 931	0.03
Mean cell haemoglobin, pg	29.4 (3.0); n = 29 824	29.2 (2.9); n = 11 897	29.6 (3.1); n = 17 927	0.14
Platelet, $\times 10^9/L$	241.3 (72.4); n = 29 834	246.2 (68.1); n = 11 903	238.1 (74.9); n = 17 931	0.11
Red cell count, $\times 10^{12}/L$	4.5 (0.7); n = 29 824	4.7 (0.6); n = 11 897	4.4 (0.7); n = 17 927	0.57*
Liver and renal function tests				
Potassium, mmol/L	4.4 (0.5); n = 49 049	4.3 (0.4); n = 17 701	4.4 (0.5); n = 31 348	0.14
Albumin, g/L	41.7 (4.0); n = 37 392	42.5 (3.3); n = 15 014	41.1 (4.3); n = 22 378	0.38*
Sodium, mmol/L	139.3 (3.0); n = 49 074	139.2 (2.7); n = 17 704	139.3 (3.1); n = 31 370	0.05
Urea, mmol/L	6.6 (3.5); n = 49 058	5.7 (2.0); n = 17 696	7.1 (4.1); n = 31 362	0.43*
Protein, g/L	73.9 (5.5); n = 35 190	74.4 (4.9); n = 14 192	73.5 (5.9); n = 20 998	0.17
Creatinine, $\mu\text{mol/L}$	94.8 (76.8); n = 49 203	78.1 (28.5); n = 17 733	104.2 (92.4); n = 31 470	0.38*
Alkaline phosphatase, U/L	77.0 (32.7); n = 37 508	73.7 (25.8); n = 15 019	79.2 (36.5); n = 22 489	0.17
Aspartate transaminase, U/L	28.0 (48.4); n = 14 801	28.5 (27.9); n = 6004	27.7 (58.4); n = 8797	0.02
Alanine transaminase, U/L	29.1 (33.8); n = 31 957	32.6 (29.7); n = 12 805	26.8 (36.2); n = 19 152	0.18
Bilirubin, $\mu\text{mol/L}$	11.2 (7.1); n = 37 319	11.4 (6.2); n = 14 986	11.0 (7.6); n = 22 333	0.05
Lipid and glucose profiles				
Triglyceride, mmol/L	1.7 (1.5); n = 46 180	1.8 (1.7); n = 16 999	1.7 (1.3); n = 29 181	0.1
Low-density lipoprotein, mmol/L	2.4 (0.8); n = 45 409	2.4 (0.81); n = 16 707	2.39 (0.8); n = 28 702	0.01
High-density lipoprotein, mmol/L	1.2 (0.3); n = 46 115	1.17 (0.31); n = 16 971	1.22 (0.34); n = 29 144	0.15
Total cholesterol, mmol/L	4.3 (1.0); n = 46 221	4.4 (1.0); n = 17 016	4.3 (1.0); n = 29 205	0.01
Glucose, mmol/L	8.9 (3.9); n = 43 596	9.2 (3.6); n = 16 077	8.7 (4.0); n = 27 519	0.12

DPP4i, dipeptidyl peptidase-4 inhibitor; SCD, sudden cardiac death; SGLT2i, sodium-glucose cotransporter-2 inhibitor; SD, standard deviation; SGLT2i, sodium-glucose cotransporter-2 inhibitor; SMD, standardized mean difference; VF, ventricular fibrillation; VT, ventricular tachycardia.
*SMD ≥ 0.2 .

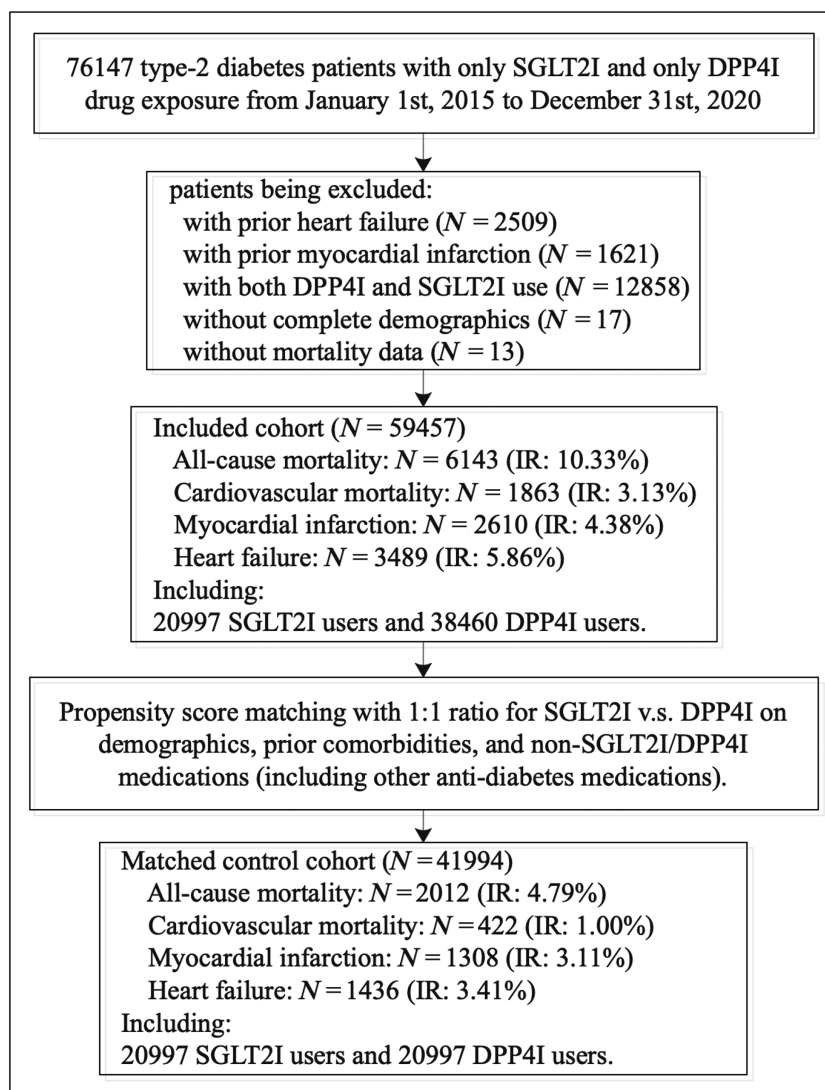
Table 1 (continued)

Characteristics	After matching				SMD
	All (N = 41 994) Mean (SD); N or count (%)	SGLT2i users (N = 20 997) Mean (SD); N or count (%)	DPP4i users (N = 20 997) Mean (SD); N or count (%)		
Outcomes					
All-cause mortality	2674 (6.36%)	527 (2.50%)	2147 (10.22%)	0.32*	
Cardiovascular mortality	538 (1.28%)	105 (0.50%)	433 (2.06%)	0.14	
Myocardial infarction	1649 (3.92%)	631 (3.00%)	1018 (4.84%)	0.1	
Heart failure	1809 (4.30%)	638 (3.03%)	1171 (5.57%)	0.13	
Demographics					
Male gender	26 527 (63.16%)	12 403 (59.07%)	14 124 (67.26%)	0.17	
Baseline age, years	61.1 (13.2); n = 41 994	57.5 (11.3); n = 20 997	64.6 (14.0); n = 20 997	0.56*	
<50	6834 (16.27%)	4700 (22.38%)	2134 (10.16%)	0.34*	
[50–60]	14 965 (35.63%)	7545 (35.93%)	7420 (35.33%)	0.01	
[60–70]	10 146 (24.16%)	6167 (29.37%)	3979 (18.95%)	0.25*	
[70–80]	5394 (12.84%)	2119 (10.09%)	3275 (15.59%)	0.17	
>80	4658 (11.09%)	469 (2.23%)	4189 (19.95%)	0.59*	
Past comorbidities					
Charlson's standard comorbidity index	1.8 (1.4); n = 41 994	1.5 (1.2); n = 20 997	2.1 (1.5); n = 20 997	0.5*	
Diabetes with chronic complication	454 (1.08%)	227 (1.08%)	227 (1.08%)	<0.01	
Diabetes without chronic complication	872 (2.07%)	441 (2.10%)	431 (2.05%)	<0.01	
Gout	838 (1.99%)	421 (2.00%)	417 (1.98%)	<0.01	
Hyperlipidaemia	1445 (3.44%)	727 (3.46%)	718 (3.41%)	<0.01	
Hypertension	9416 (22.42%)	4684 (22.30%)	4732 (22.53%)	0.01	
Hypoglycaemia	100 (0.23%)	50 (0.23%)	50 (0.23%)	<0.01	
Ischaemic heart disease	3837 (9.13%)	1962 (9.34%)	1875 (8.92%)	0.01	
Liver diseases	1257 (2.99%)	634 (3.01%)	623 (2.96%)	<0.01	
Peripheral vascular disease	196 (0.46%)	98 (0.46%)	98 (0.46%)	<0.01	
Renal diseases	210 (0.50%)	105 (0.50%)	105 (0.50%)	<0.01	
Stroke/transient ischaemic attack	1015 (2.41%)	509 (2.42%)	506 (2.40%)	<0.01	
Atrial fibrillation	649 (1.54%)	325 (1.54%)	324 (1.54%)	<0.01	
VTVF/aborted SCD	58 (0.13%)	29 (0.13%)	29 (0.13%)	<0.01	
Anaemia	910 (2.16%)	456 (2.17%)	454 (2.16%)	<0.01	
Overweight	644 (1.53%)	324 (1.54%)	320 (1.52%)	<0.01	
Cancer	851 (2.02%)	427 (2.03%)	424 (2.01%)	<0.01	
Medications					
SGLT2i vs. DPP4i	20 997 (50.00%)	20 997 (100.00%)	0 (0.00%)	inf*	
SGLT2i frequency	7.2 (9.7); n = 20 997	7.2 (9.7); n = 20 997	-	-	
DPP4i frequency	6.8 (7.0); n = 20 997	-	6.8 (7.0); n = 20 997	-	
SGLT2i duration, days	527.9 (670.1); n = 20 997	527.9 (670.1); n = 20 997	-	-	
DPP4i duration, days	449.9 (347.5); n = 20 997	-	449.9 (347.5); n = 20 997	-	
Metformin	38 984 (92.83%)	19 492 (92.83%)	19 492 (92.83%)	<0.01	
Sulphonylurea	29 798 (70.95%)	14 675 (69.89%)	15 123 (72.02%)	0.05	
Insulin	21 592 (51.41%)	10 746 (51.17%)	10 846 (51.65%)	0.01	
Acarbose	1666 (3.96%)	844 (4.01%)	822 (3.91%)	0.01	
Thiazolidinediones	11 590 (27.59%)	5960 (28.38%)	5630 (26.81%)	0.04	
Glucagon-like peptide-1 receptor agonists	2823 (6.72%)	1521 (7.24%)	1302 (6.20%)	0.04	
Statins and fibrates	29 651 (70.60%)	15 189 (72.33%)	14 462 (68.87%)	0.08	
Complete blood counts					
Haemoglobin, g/dL	12.9 (1.9); n = 23 614	13.7 (1.5); n = 12 023	12.1 (1.9); n = 11 591	0.94*	
Mean corpuscular volume, fL	86.0 (7.7); n = 23 482	86.7 (7.1); n = 11 897	85.4 (8.2); n = 11 585	0.17	

Table 1 (continued)

Characteristics	After matching				SMD
	All (N = 41 994) Mean (SD); N or count (%)	SGLT2i users (N = 20 997) Mean (SD); N or count (%)	DPP4i users (N = 20 997) Mean (SD); N or count (%)		
Eosinophil, $\times 10^9/L$	0.3 (0.2); n = 18 510	0.2 (0.2); n = 9293	0.3 (0.2); n = 9217		0.34*
Lymphocyte, $\times 10^9/L$	2.0 (0.8); n = 18 515	2.2 (0.9); n = 9298	1.8 (0.6); n = 9217		0.46*
Neutrophil, $\times 10^9/L$	4.9 (2.2); n = 18 515	5.1 (2.4); n = 9298	4.6 (1.9); n = 9217		0.23*
White cell count, $\times 10^9/L$	7.7 (2.4); n = 23 490	8.0 (2.6); n = 11 905	7.4 (2.1); n = 11 585		0.23*
Mean cell haemoglobin, pg	28.9 (3.0); n = 23 482	29.2 (2.9); n = 11 897	28.7 (3.2); n = 11 585		0.17
Platelet, $\times 10^9/L$	249.5 (65.3); n = 23 488	246.2 (68.1); n = 11 903	252.8 (62.3); n = 11 585		0.1
Red cell count, $\times 10^{12}/L$	4.5 (0.7); n = 23 482	4.7 (0.6); n = 11 897	4.3 (0.7); n = 11 585		0.72*
Liver and renal function tests					
Potassium, mmol/L	4.3 (0.5); n = 35 665	4.31 (0.43); n = 17 701	4.3 (0.57); n = 17 964		0.02
Albumin, g/L	41.4 (3.8); n = 27 777	42.5 (3.3); n = 15 014	40.1 (4.0); n = 12 763		0.66*
Sodium, mmol/L	138.7 (2.8); n = 35 664	139.2 (2.7); n = 17 704	138.2 (2.9); n = 17 960		0.34*
Urea, mmol/L	6.4 (2.9); n = 35 645	5.7 (2.0); n = 17 696	7.1 (3.5); n = 17 949		0.5*
Protein, g/L	73.1 (5.3); n = 26 754	74.4 (4.9); n = 14 192	71.5 (5.3); n = 12 562		0.56*
Creatinine, $\mu\text{mol/L}$	87.3 (45.8); n = 35 695	78.1 (28.5); n = 17 733	96.4 (56.7); n = 17 962		0.41*
Alkaline phosphatase, U/L	72.1 (24.8); n = 27 808	73.7 (25.8); n = 15 019	70.2 (23.4); n = 12 789		0.14
Aspartate transaminase, U/L	27.4 (29.2); n = 9431	28.5 (27.9); n = 6004	25.6 (31.1); n = 3427		0.1
Alanine transaminase, U/L	27.2 (25.4); n = 26 576	32.6 (29.7); n = 12 805	22.1 (19.4); n = 13 771		0.42*
Bilirubin, $\mu\text{mol/L}$	11.1 (6.2); n = 27 757	11.4 (6.2); n = 14 986	10.7 (6.2); n = 12 771		0.11
Lipid and glucose profiles					
Triglyceride, mmol/L	1.7 (1.5); n = 31 403	1.8 (1.7); n = 16 999	1.6 (1.1); n = 14 404		0.15
Low-density lipoprotein, mmol/L	2.3 (0.7); n = 30 955	2.4 (0.8); n = 16 707	2.3 (0.6); n = 14 248		0.17
High-density lipoprotein, mmol/L	1.2 (0.3); n = 31 373	1.17 (0.31); n = 16 971	1.16 (0.36); n = 14 402		0.03
Total cholesterol, mmol/L	4.3 (0.9); n = 31 423	4.4 (1.0); n = 17 016	4.1 (0.8); n = 14 407		0.23*
Glucose, mmol/L	9.0 (4.8); n = 30 395	9.2 (3.6); n = 16 077	8.8 (5.8); n = 14 318		0.09

DPP4i, dipeptidyl peptidase-4 inhibitor; SCD, sudden cardiac death; SGLT2i, sodium-glucose cotransporter-2 inhibitor; SMD, standardized mean difference; VF, ventricular fibrillation; VT, ventricular tachycardia.
* SMD ≥ 0.2 .

Figure 1 Flowchart of data processing. DPP4i, dipeptidyl peptidase-4 inhibitors; IR, incidence rate; SGLT2i, sodium-glucose cotransporter-2 inhibitors.

new-onset HF and MI, cardiovascular mortality, and all-cause mortality.

Our findings are largely consistent with existing studies. A network meta-analysis of 236 trials has reported the superior cardiovascular protective effects of SGLT2I against DPP4I when users of either medication are compared against the control group. However, the control groups were not matched and no direct comparison was made.¹⁴ A recent study evaluating the cardiovascular effects of SGLT2I and DPP4I amongst cardiorenal disease-free diabetic patients shows that SGLT2I users have a lower risk of HF.¹⁷ However, this study found the effect of SGLT2I on the prevention of acute MI to be neutral, which may be explained by the inherent difference between patients with renal failure and the general population. With a structured follow-up and close monitoring, patients with renal failure would have

their cardiovascular risk factors optimized as a part of their disease management. Moreover, recent meta-analyses have reported the benefits of SGLT2I in preventing cardiac remodelling in HF patients regardless of glycaemic status²² and reducing major clinical events in patients with established HF,²³ with a neutral effect on arrhythmic outcomes.²⁴ Furthermore, a meta-analysis including more than 34 000 patients found that the protective effect of SGLT2I on major cardiovascular adverse events of atherosclerotic origin is limited to patients with established atherosclerotic disease.²⁵ The difference in the proportion of patients with established atherosclerosis may explain the different effects of SGLT2I on MI observed. The present study demonstrates that the cardiovascular beneficial effects of SGLT2I persist in diabetic patients with pre-existing cardiovascular impairment.

Figure 2 Cumulative incidence curves for heart failure, myocardial infarction, cardiovascular mortality, and all-cause mortality stratified by SGLT2I or DPP4I use in the matched cohort. DPP4I, dipeptidyl peptidase-4 inhibitors; SGLT2I, sodium-glucose cotransporter-2 inhibitors.

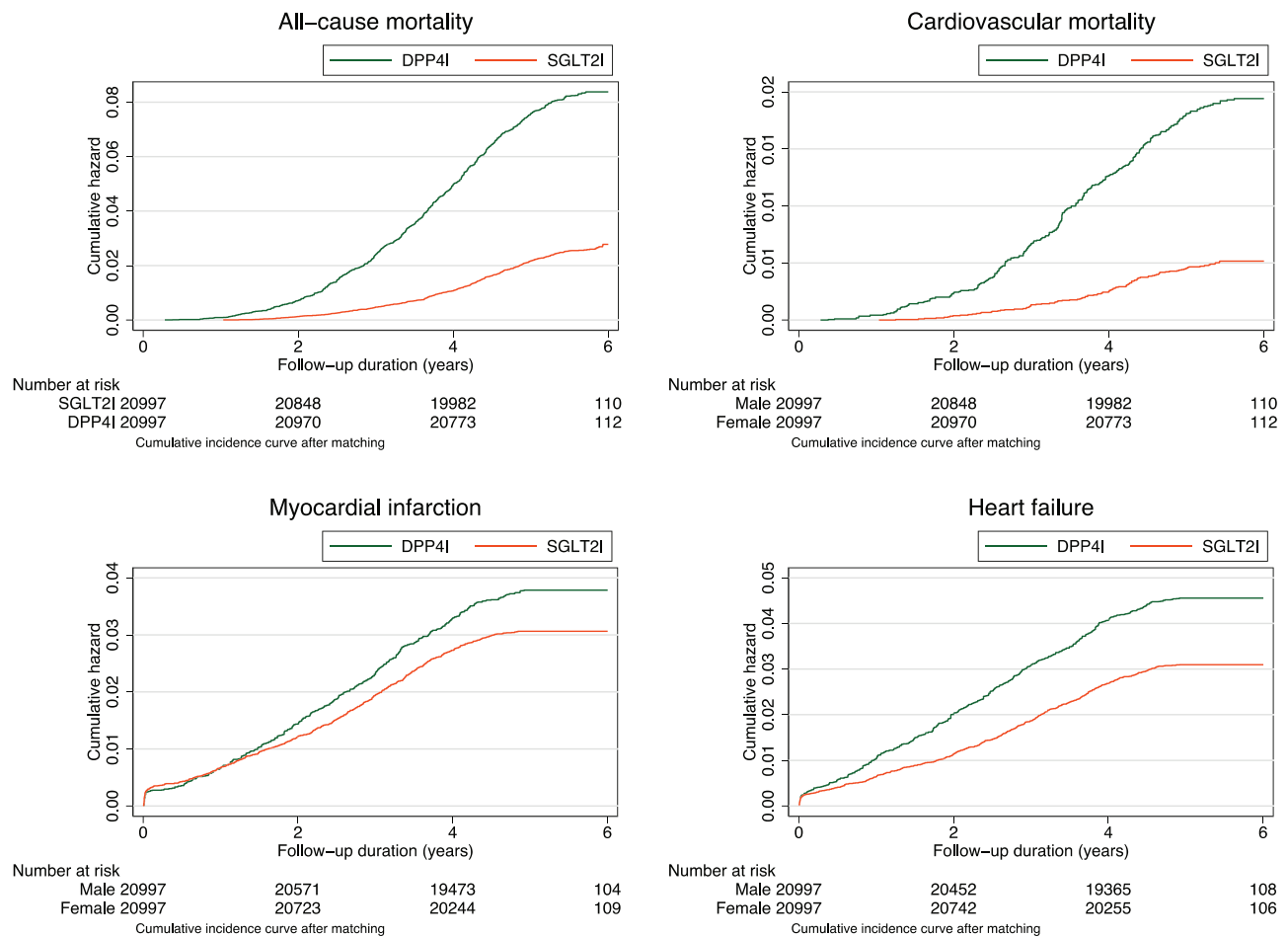


Table 2 Multivariable Cox regression for heart failure, myocardial infarction, cardiovascular mortality, and all-cause mortality in the matched cohort

Adverse outcomes	Model 1	Model 2	Model 3
	HR [95% CI]; <i>P</i> -value	HR [95% CI]; <i>P</i> -value	HR [95% CI]; <i>P</i> -value
All-cause mortality	0.30 [0.28–0.34]; <0.0001***	0.30 [0.27–0.33]; <0.0001***	0.26 [0.24–0.29]; <0.0001***
Cardiovascular mortality	0.65 [0.35–0.86]; 0.0057**	0.75 [0.59–0.94]; 0.0128*	0.67 [0.53–0.84]; 0.0005***
Myocardial infarction	0.81 [0.73–0.90]; 0.0001***	0.81 [0.73–0.91]; 0.0002***	0.81 [0.73–0.90]; 0.0001***
Heart failure	0.79 [0.71–0.87]; <0.0001***	0.77 [0.69–0.85]; <0.0001***	0.73 [0.66–0.81]; <0.0001***

CI, confidence interval; HR, hazard ratio.

Model 1 adjusted for significant demographics. Model 2 adjusted for significant demographics and past comorbidities. Model 3 adjusted for significant demographics, past comorbidities, and non-sodium-glucose cotransporter-2 inhibitor/dipeptidyl peptidase-4 inhibitor medications.

**P* ≤ 0.05.

***P* ≤ 0.01.

****P* ≤ 0.001.

There are several hypotheses for the mechanisms underlying the cardiovascular-protective effects of SGLT2I. First of all, the modulatory effect of SGLT2I on the proximal tubules results in glucosuria and natriuresis, thus lowering the preload

and the resulting stress on the ventricles.²⁶ It is speculated that SGLT2I has a unique effect of selectively contracting interstitial fluid specifically, without affecting the intravascular volume, thus particularly useful in the prevention of HF.²⁷

The hypothesis is supported by studies comparing the vascular effects of dapagliflozin and bumetanide, where dapagliflozin has been shown to have little effect on the intravascular volume.^{28,29}

Moreover, inhibition of the sodium-hydrogen ion exchanger in the myocardium, which is activated under HF to increase intracytoplasmic sodium and calcium level, was also hypothesized to be a part of the underlying mechanism.^{30,31} However, because SGLT2 receptors are absent in the heart, the exact inhibitory mechanism remains unclear. Other hypotheses on the anti-fibrosis and adipokine-reducing effects, which are effective against both HF and MI, suggest that the cardiovascular-protective effects of SGLT2i may involve multiple biochemical pathways and thus protect against different cardiovascular diseases.^{27,32}

The multiple processes involved in the cardiovascular-protective effect of SGLT2i may also explain its superior outcome against DPP4i. Whilst previous studies reported the benefits of SGLT2i on cardiovascular health are mainly attributed to its protection against HF, a recent territory-wide study has shown that SGLT2i users have a lower incidence of new-onset atrial fibrillation than DPP4i users, which supports the lower cardiovascular and all-cause mortality reported in the present study.¹⁶ This may be attributed to the anti-fibrotic effects of SGLT2i, because atrial remodelling and fibrosis are common pathogenic pathways of atrial fibrillation.³³ The favourable pleiotropic effects of SGLT2i may also improve the patients' cardiometabolic risk, thus further lowering their MI and cardiovascular mortality risk.¹⁵ It should be noted that randomized controlled trials have reported that saxagliptin increases the hospitalization rate for HF, despite having a neutral effect on the occurrence of major cardiovascular adverse effects.^{34,35} Because the present study focuses on the incident occurrence of HF and MI, patients on saxagliptin were kept in the study. Amongst the 69 521 patients with type 2 diabetes mellitus, there were in total 353 patients who used saxagliptin use with a low incidence rate of 0.51%.

Limitations

There are several limitations to the present study. Firstly, inherent information bias with a risk of under-coding and coding errors should be noted, given its observational and retrospective nature. However, the difference in patient characteristics, past comorbidities, and other medication usages between SGLT2i/DPP4i users and controls was addressed through matching using propensity scores, although residual bias may remain. There are also patients with missing data for the laboratory parameters because not all blood tests were routinely performed for all. Moreover, we were unable to access important lifestyle predictors for cardiovascular

adverse events, such as body mass index, smoking, and alcoholism. Thirdly, coding for clinical diagnoses of HF was used but echocardiographic data are not coded in the administrative database, and therefore, different types of HF based on ejection fraction could not be examined. Finally, DPP4i use is associated with an increased risk of HF compared with placebo, and therefore, this study could not distinguish between whether gliptins cause HF and whether SGLT2i reduce HF.

Conclusions

SGLT2 inhibitors are protective against adverse cardiovascular events including new-onset HF, MI, cardiovascular mortality, and all-cause mortality. The prescription of SGLT2i is preferred when taken into consideration individual cardiovascular and metabolic risk profiles in addition to drug-drug interactions.

Conflict of interest

None declared.

Funding

None.

Author contributions

Jiandong Zhou and Sharen Lee: conception of study and literature search, preparation of figures, study design, data collection, data contribution, statistical analysis, data interpretation, manuscript drafting, and critical revision of the manuscript.

Keith Sai Kit Leung, Abraham Ka Chung Wai, Tong Liu, Ying Liu, Dong Chang, Wing Tak Wong, Ian Chi Kei Wong, and Bernard Man Yung Cheung: conception of study and literature search, data collection, data contribution, critical revision of the manuscript, and study supervision.

Qingpeng Zhang and Gary Tse: conception of study and literature search, study design, data collection, data analysis, data contribution, manuscript drafting, critical revision of manuscript, and study supervision.

Supporting information

Additional supporting information may be found online in the Supporting Information section at the end of the article.

Figure S1. Propensity score matching comparisons for SGLT2i v.s. DPP4i before and after 1:1 matching with nearest neighbor search strategy using a caliper of 0.1.

Table S1. ICD-9 codes for diagnoses and ICD-10 codes for outcomes.

Table S2. Univariable Cox regression to identify significant predictors of heart failure and myocardial infarction before and after 1:1 matching.

* for $P \leq 0.05$, ** for $P \leq 0.01$, *** for $P \leq 0.001$; HR: hazard ratio; CI: confidence interval; SD: standard deviation; SCD: sudden cardiac death; VF: ventricular fibrillation; VT: ventricular tachycardia; SGLT2i: sodium glucose cotransporter-2 inhibitor; DPP4i: dipeptidyl peptidase-4 inhibitor; CV: coefficient of variation.

Table S3. Univariable Cox regression to identify significant predictors of cardiovascular mortality and all-cause mortality before and after 1:1 matching.

* for $P \leq 0.05$, ** for $P \leq 0.01$, *** for $P \leq 0.001$; HR: hazard ratio; CI: confidence interval; SD: standard deviation; SCD: sudden cardiac death; VF: ventricular fibrillation; VT: ventricular tachycardia; SGLT2i: sodium glucose cotransporter-2 inhibitor; DPP4i: dipeptidyl peptidase-4 inhibitor; CV: coefficient of variation.

Table S4. Sensitivity analysis 1: Multivariable Cox models with a one-year lag time.

Table S5. Sensitivity analysis 2: Competing risk analyses.

Table S6. Sensitivity analysis 3: Different propensity score approaches.

References

- Zheng Y, Ley SH, Hu FB. Global aetiology and epidemiology of type 2 diabetes mellitus and its complications. *Nat Rev Endocrinol* 2018; **14**: 88–98.
- Curtis HJ, Dennis JM, Shields BM, Walker AJ, Bacon S, Hattersley AT, Jones AG, Goldacre B. Time trends and geographical variation in prescribing of drugs for diabetes in England from 1998 to 2017. *Diabetes Obes Metab* 2018; **20**: 2159–2168.
- Cho YK, Kang YM, Lee SE, Lee J, Park JY, Lee WJ, Park JY, Lee WJ, Kim YJ, Jung CH. Efficacy and safety of combination therapy with SGLT2 and DPP4 inhibitors in the treatment of type 2 diabetes: a systematic review and meta-analysis. *Diabetes Metab* 2018; **44**: 393–401.
- Fei Y, Tsoi M-F, Cheung BMY. Cardiovascular outcomes in trials of new antidiabetic drug classes: a network meta-analysis. *Cardiovasc Diabetol* 2019; **18**: 112.
- Zinman B, Wanner C, Lachin JM, Fitchett D, Bluhmki E, Hantel S, Matthews M, Devins T, Johansen OE, Woerle HJ, Broedl UC, Inzucchi SE, EMPA-REG OUTCOME Investigators. Empagliflozin, cardiovascular outcomes, and mortality in type 2 diabetes. *N Engl J Med* 2015; **373**: 2117–2128.
- Verma S, Mazer CD, Fitchett D, Inzucchi SE, Pfarr E, George JT, Zinman B. Empagliflozin reduces cardiovascular events, mortality and renal events in participants with type 2 diabetes after coronary artery bypass graft surgery: subanalysis of the EMPA-REG OUTCOME(R) randomised trial. *Diabetologia* 2018; **61**: 1712–1723.
- Fitchett D, Butler J, van de Borne P, Zinman B, Lachin JM, Wanner C, Woerle HJ, Hantel S, George JT, Johansen OE, Inzucchi SE, EMPA-REG OUTCOME® trial investigators. Effects of empagliflozin on risk for cardiovascular death and heart failure hospitalization across the spectrum of heart failure risk in the EMPA-REG OUTCOME(R) trial. *Eur Heart J* 2018; **39**: 363–370.
- Radholm K, Figtree G, Perkovic V, Solomon SD, Mahaffey KW, de Zeeuw D, Fulcher G, Barrett TD, Shaw W, Desai M, Matthews DR, Neal B. Canagliflozin and heart failure in type 2 diabetes mellitus: results from the CANVAS program. *Circulation* 2018; **138**: 458–468.
- Ou HT, Chang KC, Li CY, Wu JS. Risks of cardiovascular diseases associated with dipeptidyl peptidase-4 inhibitors and other antidiabetic drugs in patients with type 2 diabetes: a nation-wide longitudinal study. *Cardiovasc Diabetol* 2016; **15**: 41.
- Scirica BM, Braunwald E, Raz I, Cavender MA, Morrow DA, Jarolim P, Udell JA, Mosenzon O, Im K, Umez-Eronini AA, Pollack PS, Hirshberg B, Frederick R, Lewis BS, McGuire DK, Davidson J, Steg PG, Bhatt DL, SAVOR-TIMI 53 Steering Committee and Investigators. Heart failure, saxagliptin, and diabetes mellitus: observations from the SAVOR-TIMI 53 randomized trial. *Circulation* 2014; **130**: 1579–1588.
- Cha SA, Park YM, Yun JS, Lim TS, Song KH, Yoo KD, Ahn YB, Ko SH. A comparison of effects of DPP-4 inhibitor and SGLT2 inhibitor on lipid profile in patients with type 2 diabetes. *Lipids Health Dis* 2017; **16**: 58.
- Gautam S, Agiro A, Barron J, Power T, Weisman H, White J. Heart failure hospitalization risk associated with use of two classes of oral antidiabetic medications: an observational, real-world analysis. *Cardiovasc Diabetol* 2017; **16**: 93.
- Fuchigami A, Shigiyama F, Kitazawa T, Okada Y, Ichijo T, Higa M, Hiyoshi T, Inoue I, Iso K, Yoshii H, Hirose T, Kumashiro N. Efficacy of dapagliflozin versus sitagliptin on cardiometabolic risk factors in Japanese patients with type 2 diabetes: a prospective, randomized study (DIVERSITY-CVR). *Cardiovasc Diabetol* 2020; **19**: 1.
- Zheng SL, Roddick AJ, Aghar-Jaffar R, Shun-Shin MJ, Francis D, Oliver N, Meeran K. Association between use of sodium-glucose cotransporter 2 inhibitors, glucagon-like peptide 1 agonists, and dipeptidyl peptidase 4 inhibitors with all-cause mortality in patients with type 2 diabetes: a systematic review and meta-analysis. *JAMA* 2018; **319**: 1580–1591.
- Shao S-C, Chang K-C, Lin S-J, Chien R-N, Hung M-J, Chan Y-Y, Kao Yang YH, Lai EC. Favorable pleiotropic effects of sodium glucose cotransporter 2 inhibitors: head-to-head comparisons with dipeptidyl peptidase-4 inhibitors in type 2 diabetes patients. *Cardiovasc Diabetol* 2020; **19**: 17.
- Ling AW-C, Chan C-C, Chen S-W, Kao Y-W, Huang C-Y, Chan Y-H, Chu PH. The risk of new-onset atrial fibrillation in patients with type 2 diabetes mellitus treated with sodium glucose cotransporter 2 inhibitors versus dipeptidyl peptidase-4 inhibitors. *Cardiovasc Diabetol* 2020; **19**: 188.
- Birkeland KI, Bodegard J, Banerjee A, Kim DJ, Norhammar A, Eriksson JW, Thuresson M, Okami S, Ha KH, Kossack N, Mamza JB, Zhang R, Yajima T, Komuro I, Kadowaki T. Lower cardiorenal risk with sodium-glucose cotransporter-2 inhibitors versus dipeptidyl peptidase-4 inhibitors in patients with type 2 diabetes without cardiovas-

- cular and renal diseases: a large multinational observational study. *Diabetes Obes Metab* 2021; **23**: 75–85.
18. Zhou J, Wang X, Lee S, Wu WKK, Cheung BMY, Zhang Q, Tse G. Proton pump inhibitor or famotidine use and severe COVID-19 disease: a propensity score-matched territory-wide study. *Gut* 2020; **70**: 2012–2013.
 19. Ju C, Lai RWC, Li KHC, Hung JKF, Lai JCL, Ho J, Liu Y, Tsoi MF, Liu T, Cheung BMY, Wong ICK, Tam LS, Tse G. Comparative cardiovascular risk in users versus non-users of xanthine oxidase inhibitors and febuxostat versus allopurinol users. *Rheumatology (Oxford)* 2020; **59**: 2340–2349.
 20. Lee S, Liu T, Zhou J, Zhang Q, Wong WT, Tse G. Predictions of diabetes complications and mortality using hba1c variability: a 10-year observational cohort study. *Acta Diabetol* 2020; **58**: 171–180.
 21. Mui JV, Zhou J, Lee S, Leung KSK, Lee TTL, Chou OHI, Tsang SL, Wai AKC, Liu T, Wong WT, Chang C, Tse G, Zhang Q. Sodium-glucose cotransporter 2 (SGLT2) inhibitors vs. dipeptidyl peptidase-4 (DPP4) inhibitors for new-onset dementia: a propensity score-matched population-based study with competing risk analysis. *Front Cardiovasc Med* 2021; **8**: 747620.
 22. Zhang N, Wang Y, Tse G, Korantzopoulos P, Letsas KP, Zhang Q, Li G, Lip GYH, Liu T. Effect of sodium-glucose cotransporter-2 inhibitors on cardiac remodeling: a systematic review and meta-analysis. *Eur J Prev Cardiol* 2021: zwab173.
 23. Bazoukis G, Papadatos SS, Thomopoulos C, Tse G, Cheilidis S, Tsioufis K, Farmakis D. Impact of SGLT2 inhibitors on major clinical events and safety outcomes in heart failure patients: a meta-analysis of randomized clinical trials. *J Geriatr Cardiol* 2021; **18**: 783–795.
 24. Sfairopoulos D, Zhang N, Wang Y, Chen Z, Letsas KP, Tse G, Li G, Lip GYH, Liu T, Korantzopoulos P. Association between sodium-glucose cotransporter-2 inhibitors and risk of sudden cardiac death or ventricular arrhythmias: a meta-analysis of randomized controlled trials. *Europace* 2021; **24**: 20–30.
 25. Zelniker TA, Wiviott SD, Raz I, Im K, Goodrich EL, Bonaca MP, Mosenzon O, Kato ET, Cahn A, Furtado RHM, Bhatt DL, Leiter LA, McGuire DK, Wilding JPH, Sabatine MS. SGLT2 inhibitors for primary and secondary prevention of cardiovascular and renal outcomes in type 2 diabetes: a systematic review and meta-analysis of cardiovascular outcome trials. *Lancet* 2019; **393**: 31–39.
 26. Sattar N, McLaren J, Kristensen SL, Preiss D, McMurray JJ. SGLT2 Inhibition and cardiovascular events: why did EMPA-REG Outcomes surprise and what were the likely mechanisms? *Diabetologia* 2016; **59**: 1333–1339.
 27. Verma S, McMurray JJV. SGLT2 inhibitors and mechanisms of cardiovascular benefit: a state-of-the-art review. *Diabetologia* 2018; **61**: 2108–2117.
 28. Wilcox CS, Shen W, Boulton DW, Leslie BR, Griffen SC. Interaction between the sodium-glucose-linked transporter 2 inhibitor dapagliflozin and the loop diuretic bumetanide in normal human subjects. *J Am Heart Assoc* 2018; **7**: e007046.
 29. Hallow KM, Helmlinger G, Greasley PJ, McMurray JJV, Boulton DW. Why do SGLT2 inhibitors reduce heart failure hospitalization? A differential volume regulation hypothesis. *Diabetes Obes Metab* 2018; **20**: 479–487.
 30. Packer M, Anker SD, Butler J, Filippatos G, Zannad F. Effects of sodium-glucose cotransporter 2 inhibitors for the treatment of patients with heart failure: proposal of a novel mechanism of action. *JAMA Cardiol* 2017; **2**: 1025–1029.
 31. Baartscheer A, Schumacher CA, Wust RC, Fiolet JW, Stienen GJ, Coronel R, Zuurbier CJ. Empagliflozin decreases myocardial cytoplasmic Na⁺ through inhibition of the cardiac Na⁺/H⁺ exchanger in rats and rabbits. *Diabetologia* 2017; **60**: 568–573.
 32. Shao Q, Meng L, Lee S, Tse G, Gong M, Zhang Z, Zhao J, Zhao Y, Li G, Liu T. Empagliflozin, a sodium glucose co-transporter-2 inhibitor, alleviates atrial remodeling and improves mitochondrial function in high-fat diet/streptozotocin-induced diabetic rats. *Cardiovasc Diabetol* 2019; **18**: 165.
 33. Fedak PW, Verma S, Weisel RD, Li RK. Cardiac remodeling and failure from molecules to man (part II). *Cardiovasc Pathol* 2005; **14**: 49–60.
 34. Scirica BM, Bhatt DL, Braunwald E, Steg PG, Davidson J, Hirshberg B, Ohman P, Frederich R, Wiviott SD, Hoffman EB, Cavender MA, Udell JA, Desai NR, Mosenzon O, McGuire DK, Ray KK, Leiter LA, Raz I, SAVOR-TIMI 53 Steering Committee and Investigators. Saxagliptin and cardiovascular outcomes in patients with type 2 diabetes mellitus. *N Engl J Med* 2013; **369**: 1317–1326.
 35. Udell JA, Bhatt DL, Braunwald E, Cavender MA, Mosenzon O, Steg PG, Davidson JA, Nicolau JC, Corbalan R, Hirshberg B, Frederich R, Im K, Umez-Eronini AA, He P, McGuire DK, Leiter LA, Raz I, Scirica BM, SAVOR-TIMI 53 Steering Committee and Investigators. Saxagliptin and cardiovascular outcomes in patients with type 2 diabetes and moderate or severe renal impairment: observations from the SAVOR-TIMI 53 trial. *Diabetes Care* 2015; **38**: 696–705.