

Supporting Information

Appendix S1 – Primate species and subspecies affected by transportation and service corridors

S1a – All primate species and subspecies reported from the literature review to be affected by transportation and service corridors.

Asia			Direct impacts										Indirect impacts									
			1	2	3	4	5	6	7	8	9	10	11	12	13	14	15	16	17	18	19	20
	Hominidae																					
	Pongo																					
	Listed																					
	<i>Pongo abelii</i>	CR – R, ET, P				X	X					X					X		X	X	X	
	<i>Pongo tapanuliensis</i>	CR – R, ET, P			X	X		X						X			X		X	X	X	
	Not listed																					
	<i>Pongo pygmaeus</i>	CR – R, RW, P	X		X	X		X	X		X		X				X		X	X	X	
	Hylobatidae																					
	Hylobates																					
	Listed																					
	<i>Hylobates syndactylus</i>	EN – R			X	X											X		X	X	X	
	<i>Hylobates lar</i>	EN – R, P	X		X	X											X	X	X	X	X	
	<i>Hylobates agilis</i>	EN – R			X	X			X								X		X	X	X	
	Not listed																					
	<i>Hylobates muelleri</i>	EN – R, ET			X	X		X									X					
	<i>Hylobates klossii</i>	EN – R			X												X			X	X	
	<i>Hylobates albibarbis</i>	EN – R			X						X						X					
	<i>Hylobates pileatus</i>	EN – R, P	X		X			X									X	X	X	X	X	
	<i>Hylobates moloch</i>	EN – ET	X		X												X		X	X	X	
	Nomascus																					
	Not listed																					
	<i>Nomascus concolor</i>	CR – R, P	X		X	X											X	X	X	X	X	
	<i>Nomascus hainanus</i>	CR – R, P			X		X										X	X	X	X	X	
	<i>Nomascus siki</i>	CR – R, P			X	X	X	X									X	X	X	X	X	
	<i>Nomascus leucogenys</i>	CR – R, P			X	X											X	X	X	X	X	
	<i>Nomascus gabriellae</i>	EN – R, P	X		X	X	X										X	X	X	X	X	
	<i>Nomascus annamensis</i>	EN – R, P			X	X											X	X	X	X	X	
	Hoolock																					
	Not listed																					
	<i>Hoolock hoolock</i>	EN – R, RW	X		X	X	X			X							X	X	X	X	X	
	<i>Hoolock leuconedys</i>	VU – R, ET	X		X	X				X							X	X	X	X	X	
	Cercopithecidae																					
	Rhinopithecus																					
	Listed																					
	<i>Rhinopithecus strykeri</i>	CR – R, P			X												X	X			X	
	<i>Rhinopithecus avunculus</i>	CR – R, P			X	X	X	X									X	X	X	X	X	
	<i>Rhinopithecus brelichi</i>	EN – R, AT			X	X	X										X	X	X	X	X	
	Not listed																					
	<i>Rhinopithecus bieti</i>	EN – R			X	X											X		X	X	X	
	<i>Rhinopithecus roxellana</i>	EN – R, P			X	X	X										X	X	X	X	X	
	Pygathrix																					
	Listed																					
	<i>Pygathrix nemaus</i>	CR – R, ET, P	X		X	X	X	X									X	X	X	X	X	
	<i>Pygathrix cinerea</i>	CR – R, ET, P			X												X		X	X	X	
	<i>Pygathrix nigripes</i>	CR – R, ET, P			X												X		X	X	X	
	Semnopithecus																					
	Listed																					
	<i>Semnopithecus vetulus</i>	EN – R, ET	X	X	X	X							X				X	X	X	X	X	
	<i>Semnopithecus ajax</i>	EN – R			X												X	X				
	Not listed																					
	<i>Semnopithecus priam</i>	NT – R, ET	X	X	X						X	X									X	X
	<i>Semnopithecus entellus</i>	LC – R, RW, ET, P	X	X	X												X	X				
	Trachypithecus																					
	Listed																					
	<i>Trachypithecus obscurus</i>	EN – R	X		X												X			X	X	
	<i>Trachypithecus geei</i>	EN – R, ET, P	X	X	X	X		X									X		X	X	X	
	<i>Trachypithecus phayrei</i>	EN – R, RW, ET, P	X		X	X											X		X	X	X	
	<i>Trachypithecus hatinhensis</i>	EN – R			X	X	X	X									X		X	X	X	
	Not listed																					
	<i>Trachypithecus leucocephalus</i>	CR – R			X	X		X									X	X		X	X	
	<i>Trachypithecus delacourii</i>	CR – R			X	X		X									X					
	<i>Trachypithecus francoisi</i>	EN – R, ET, P			X						X	X					X	X	X	X	X	
	<i>Trachypithecus crepuscula</i>	EN – R, ET			X												X	X	X	X	X	
	<i>Trachypithecus shortridgei</i>	EN – R			X												X	X	X	X	X	
	<i>Trachypithecus cristatus</i>	VU – R, P	X		X	X				X							X	X	X	X	X	
	<i>Trachypithecus pileatus</i>	VU – R, RW, ET, P	X	X	X	X	X	X									X	X	X	X	X	
	<i>Trachypithecus laotum</i>	VU – R			X						X	X										
	<i>Trachypithecus auratus</i>	VU – R			X																	

^a Divided into region, family, genus, and species. 'Listed' refers to species and subspecies catalogued by the IUCN as being threatened by transportation and service corridors. 'Unlisted' refers to those that have not been catalogued.

^b Next to each species' name is their IUCN conservation status (CR = critically endangered, EN = endangered, VU = vulnerable, NT = near threatened, LC = least concern, DD = data deficient) and the type of corridor/s affecting them (R = roads, RW = rail, ET = electrical transmission lines. P = pipeline, SE = seismic exploration, AT = aerial tramway).

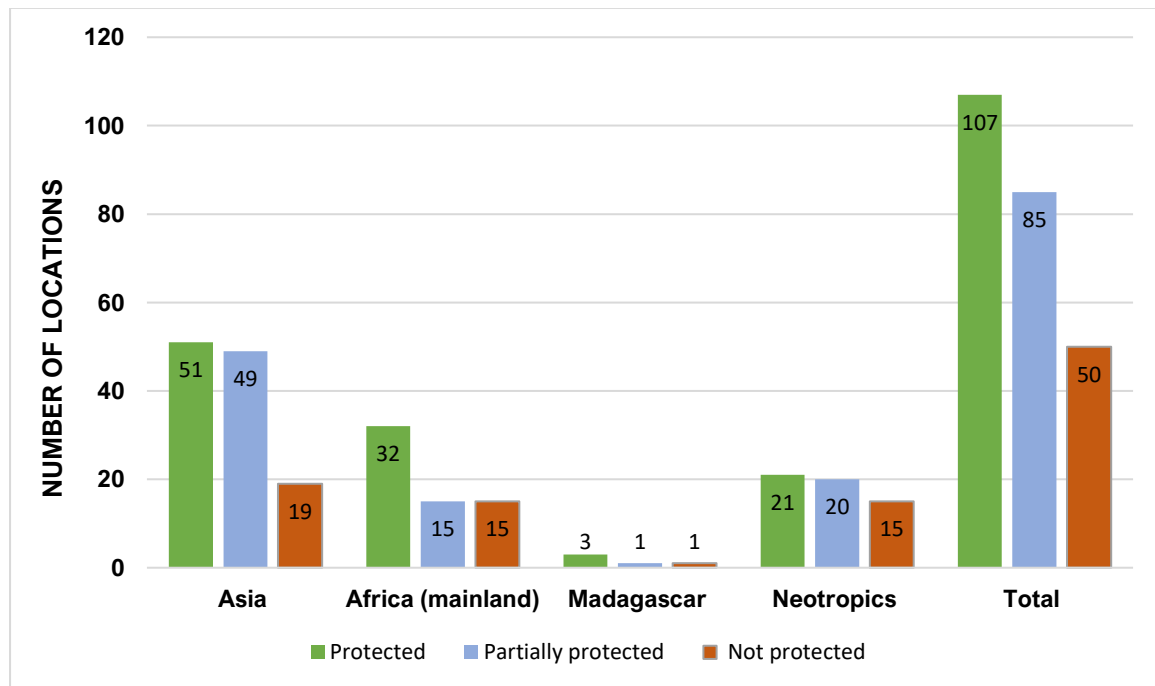
^c For each species, the specific impacts caused by transportation and service corridors on them are listed (1 = death, 2 = non-fatal injury, 3 = habitat loss and fragmentation, 4 = barrier effect, 5 = reduced access to resources, 6 = reduced abundance near corridors, 7 = increased individual vigilance, 8 = greater social cohesion, 9 = decreased social cohesion, 10 = change in locomotor activity, 11 = increased interaction with humans, 12 = attract primates to corridor, 13 = exposure to pollution, 14 = impeded genetic exchange, 15 = access to logging, 16 = access to livestock grazing, 17 = access to agriculture, 18 = access to hunting, 19 = access to mining and drilling, 20 = introduction of disease).

		1	2	3	4	5	6	7	8	9	10	11	12	13	14	15	16	17	18	19	20
Pitheciidae																					
Callicebus																					
Listed																					
	<i>Callicebus barbarabrownae</i>	CR – R, ET	X		X												X	X	X	X	
	<i>Callicebus modestus</i>	EN – R			X	X											X	X	X	X	
	<i>Callicebus olallae</i>	EN – R			X	X											X	X	X	X	
Plecturocebus																					
Listed																					
	<i>Plecturocebus moloch</i>	LC – R			X												X	X	X	X	
Not listed																					
	<i>Plecturocebus cupreus</i>	LC – R, P			X	X											X	X	X	X	
	<i>Plecturocebus baptista</i>	LC – R	X		X																
	<i>Plecturocebus brunneus</i>	LC – ET			X	X		X													
Pithecia																					
Not listed																					
	<i>Pithecia pithecia</i>	LC – R			X	X											X	X	X	X	
Callitrichidae																					
Leontopithecus																					
Listed																					
	<i>Leontopithecus rosalia</i>	EN – R, ET			X	X										X					
Leontocebus																					
Not listed																					
	<i>Leontocebus nigricollis</i>	LC – R, P			X	X															
	<i>Leontocebus fuscicollis</i>	LC – P			X	X		X													
Callimico																					
Listed																					
	<i>Callimico goeldii</i>	VU – R			X											X		X	X		
Mico																					
Listed																					
	<i>Mico leucippe</i>	VU – R, P			X	X											X	X	X	X	
	<i>Mico rondoni</i>	VU – R, ET, P			X	X											X	X	X	X	
	<i>Mico nigriceps</i>	NT – R, P			X	X											X	X	X	X	
	<i>Mico chrysoleucus</i>	LC – R, P			X	X											X	X	X	X	
	<i>Mico intermedius</i>	LC – R, P			X	X											X	X	X	X	
	<i>Mico emiliae</i>	LC – R, P			X	X											X	X	X	X	
	<i>Mico argentatus</i>	LC – R, P			X	X															
Not listed																					
	<i>Mico munduruku</i>	LC – R, P			X	X											X	X	X	X	
	<i>Mico manicorensis</i>	DD – R, P			X	X											X	X	X	X	
	<i>Mico marcai</i>	DD – R, P			X	X											X	X	X	X	
Saguinus																					
Listed																					
	<i>Saguinus bicolor</i>	CR – R, ET	X		X												X		X	X	
	<i>Saguinus imperator</i>	LC – R, P			X		X														
Cebuella																					
Not listed																					
	<i>Cebuella pigmea</i>	LC – R, P			X	X															
Callithrix																					
Not listed																					
	<i>Callithrix flaviceps</i>	CR – R	X		X																
	<i>Callithrix kuhlii</i>	VU – R, ET	X	X	X									X	X						
	<i>Callithrix penicillata</i>	LC – R	X		X																
	<i>Callithrix jacchus</i>	LC – R	X		X																
	<i>Callithrix geoffroyi</i>	LC – R	X		X																

S1b – Primate species listed by the IUCN as threatened by transportation and service corridors but not the subjects of any related studies found in this review.

Species not found in any studies		
Common name	Latin binomial	IUCN conservation status
Northern grey gibbon	<i>Hylobates funereus</i>	Endangered
Tarai grey langur	<i>Semnopithecus hector</i>	Near threatened
Black mangabey	<i>Lophocebus aterrimus</i>	Vulnerable
Foa's red colobus	<i>Piliocolobus foai</i>	Endangered
Oustalet's red colobus	<i>Piliocolobus oustaleti</i>	Vulnerable
Ulindi River red colobus	<i>Piliocolobus lulindicus</i>	Endangered
Semliki red colobus	<i>Piliocolobus semlikiensis</i>	Vulnerable
Lomami red colobus	<i>Piliocolobus parmentieri</i>	Endangered
Owl-faced monkey	<i>Cercopithecus hamlyni</i>	Vulnerable
Rondo dwarf galago	<i>Paragalago rondoensis</i>	Endangered
Spix's red-handed howler	<i>Alouatta discolor</i>	Vulnerable
Maranhão red-handed howler	<i>Alouatta ululata</i>	Endangered
Red-handed howler	<i>Alouatta belzebul</i>	Vulnerable
Uta Hick's bearded saki	<i>Chiropotes utahickae</i>	Endangered
White-nosed saki	<i>Chiropotes albinasus</i>	Endangered
Northern night monkey	<i>Aotus trivirgatus</i>	Least concern
Hoffman's titi monkey	<i>Plecturocebus hoffmannsi</i>	Least concern
Coimbra-Filho's titi monkey	<i>Callicebus coimbrai</i>	Endangered
Golden-backed squirrel monkey	<i>Saimiri ustus</i>	Near threatened
Bolivian squirrel monkey	<i>Saimiri boliviensis</i>	Least concern
Rio Acari marmoset	<i>Mico acariensis</i>	Least concern

Appendix S2 – Geographical distribution of studies



S2a – The number of studies identified during review process that took place in protected areas, partially protected areas (study locations that fall within part of a protected area/s whilst the rest falls outside of the protected area delimitation), and unprotected areas.

S2b – The locations of the studies identified during review process, together with their geographic coordinates (decimal degrees).

Region	Country	Study location	Longitude	Latitude
	Bangladesh	Lawachara National Park	91.79725	24.341442
		Satchari National Park	91.445083	24.124518
		Madhupur National Park	90.078037	24.703853
	Bhutan	Dakpai-Buli	27.197272	90.659142
		Chirang Reserve Forest	90.338352	26.593627
		Lorim	90.433543	27.51404
	Cambodia	Mondulkiri Province	106.869113	12.711178
		Cardamom Mountains	103.233418	11.982113
		Botum Sakor National Park	103.220398	11.094097
		Snoul Wildlife Sanctuary	106.676206	12.060690
		Pheapimex	106.465965	13.875842
	China	Gaoligong Mountains	98.632842	26.109244
		Fanjingshan National Nature Reserve	108.64569	27.907806
		Wuliang Mountain Reserve	100.386943	24.854241
		Ailao Mountain Reserve	101.328657	24.213556
		Bawangling National Nature Reserve	109.08611	19.124027
		Chongzou National Reserve	107.47996	22.270916
		Mayanghe National Nature Reserve	108.257333	28.2446
		Bapen Reserve	108.050053	22.516229
		Yezhong Nature Reserve	104.9	26.25
		Mount Jinfo	107.17305	29.022868
		Hengduan Mountains	99.374017	27.599016
		Shennongjia National Nature Reserve	110.321512	31.477979
		Yuhuangmiao	105.95637	30.8282
		Baihe Nature Reserve	104.102099	33.272238
		Mount Emei	103.333964	29.515445
Kowloon Hills	114.164784	22.351589		

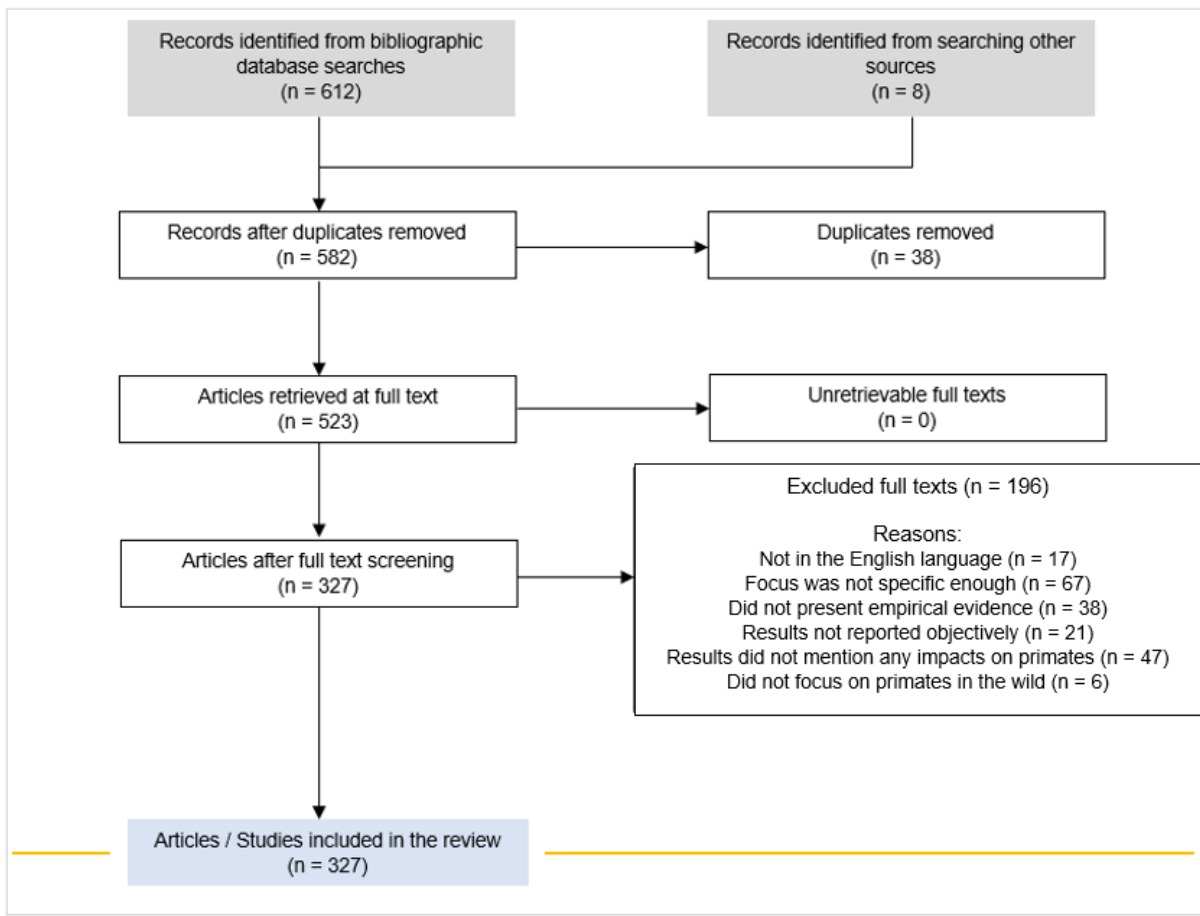
Asia		Mount Lu	115.993436	29.558656	
		Henan Taihangshan National Nature Reserve	112.131115	35.245843	
	India		Itanagar Wildlife Sanctuary	93.53297	27.153842
			Nambor-Doigrung Wildlife Sanctuary	93.882500	26.395278
			Meghalaya	91.611302	25.820755
			Dindigul	78.075627	10.188499
			Jayamahal	77.584138	13.005684
			Kokrajhar	90.225543	26.379552
			Indira Gandhi Wildlife Sanctuary	10.423265	77.125453
			Silent Valley National Park	76.537473	11.0642
			Nagarjunasagar-Srisailem Tiger Reserve	78.888409	16.031194
			Sathyamangalam Wildlife Sanctuary	76.975769	11.574072
			Tambiraparani Riverine Forest	77.312085	8.688531
			Athirapally	76.513392	10.292594
			Hollongapar Gibbon Wildlife Sanctuary	94.348902	26.673739
			Mudumalai National Park	76.538814	11.562382
			Nilgiri-Mysore Corridor	76.578781	11.706765
			Khajjiar-Kalatop Wildlife Sanctuary	76.019071	32.551166
			Sepahijala Wildlife Sanctuary	91.320935	23.669412
			Parambikulam	76.782334	10.426801
			Bandipur National Park	76.630068	11.666463
			Vandanmedu	77.153138	9.717244
			Chamundi Hills	76.67633	12.272516
			Namdapha National Park	96.534783	27.442855
			Lohit District	96.155451	27.891986
			Lower Dibang Valley	95.936308	28.143874
			Borajan	95.310762	27.401435
			Jabalpur	80.007305	23.166374
			Nainpur	80.182963	21.071855
			Pench National Park	79.384789	21.616966
			Jodhpur	73.043315	26.360553
			Shimla	77.178958	31.105483
			Chincholi	77.321529	17.375846
			Thar desert	72.170548	26.719449
			Rajaji National Park	78.293719	29.991677
			Tadoba Andhari National Park	79.360646	20.248
			Jim Corbett National Park	78.774346	29.530146
			Kumbhalgarh Wildlife Sanctuary	73.592546	25.122802
			Buxa Tiger Reserve	89.534358	26.618229
			Valparai Plateau	76.958103	10.326505
		Shivalik Hills	82.361726	27.694921	
	Aligarh	78.095847	27.907899		
Indonesia		Leuser Ecosystem	97.32978	3.798247	
		Ula Masen Ecosystem	95.959211	4.877823	
		Batang Toru	99.08028	1.585398	
		Sebangau	113.905222	-2.26619	
		Tesso Nilo Forest	101.623084	-0.087604	
		Bantimurung Bulusaurang National Park	119.737759	-5.050334	
		Kalimantan	117.410005	1.727294	
		Wehea Forest	116.778611	1.546111	
		Mentawai Islands	99.145908	1.738265	
		Sabangau National Park	113.9	2.316667	
		Lengkong	107.636569	-7.018599	
		Cipaganti	107.753725	-7.280194	
		Mount Halimun Salak National Park	106.522443	-6.702653	
		Kuningan District	108.447168	-6.964877	
		Baluran National Park	114.387465	-7.831592	
		Toboli Barat	120.05	-0.716667	
		Buton Island	122.832693	-5.460319	
Japan		Nagata (Yakushima Island)	130.41886	30.379538	
		Koshima (Yakushima Island)	130.530071	30.248390	
Laos		Nakai-Nam Theun	105.234853	17.958232	
		Muang Vilabouli	105.860141	16.850286	
Malaysia		Teluk Bahang	100.230381	5.463561	
		Kuala Berang	102.915301	5.086518	
		Selangor	101.527941	2.771952	
		Negeri Sembilan	102.056417	2.773244	
	Sarawak	113.420165	2.9626		

	Singapore	Nationwide	103.815752	1.350924
	Myanmar	Maw River	98.41393	26.433
	Sri Lanka	Sinharaja Rainforest Reserve	80.555628	6.334788
		Colombo	79.890111	6.930286
		Labugama-Kalatuwawa Forest Reserve	80.177321	6.899354
		Talangama Wetlands	79.921533	6.890498
		Panadura	79.904167	6.713333
		Piliyandala	79.923263	6.799746
	Thailand	Mae Hong Son Province	97.893462	18.603476
		Khao Ang Rue Nai Wildlife Sanctuary	101.710571	13.207753
		Sakaerat Environmental Research Station	101.953629	14.508844
	Vietnam	Son Tra Nature Reserve	108.28584	16.119453
		Phong Nha-Ke Bang National Park	106.282534	17.588757
		Kon Ka Kinh National Park	108.379487	14.258238
		Nui Chua National Park	109.168624	11.664718
		Phuoc Binh National Park	108.782501	11.999529
		Na Hang-Lam Binh Nature Reserve	105.328988	22.475
		Pu Mat National Park	104.860869	19.056978
		Mu Cang Chai SHCA-Muong La Watershed Protection Forest Complex	104.343494	21.670826
		Chu Yang Sin National Park	108.352976	12.295824
		Pu Hu Nature Reserve	104.892113	20.490846
		Huong Son Forest	105.288035	18.377198
		Khe Ve Nature Reserve	105.840637	17.911055
		Dak Rong Nature Reserve	108.434952	14.484430
		Song Thanh Nature Reserve	107.783462	15.642998
		Dakroong and Tam Lap Concessions	107.756366	15.696004
		Hon Ba Nature Reserve	108.974017	12.108636
		Quang Truc Commune	107.300780	12.147803
		Bu Gia Map National Park	107.243019	12.115006
	Dong Nai Nature Reserve	107.097126	11.389802	
	Van Long Nature Reserve	105.888395	20.375454	
Africa (mainland)	Cameroon	Lobéké National Park	15.742935	2.295893
		Banyang-Mbo Wildlife Sanctuary	9.654311	5.342317
		Takamanda National Park	9.292456	6.136582
		Campo Ma'an	10.11788	2.362188
		Boumba Bek National Park	14.752158	2.924088
		Deng Deng National Park	3.526842	5.188298
		Lobéké National Park	15.742935	2.295893
		Mbam Djerem National Park	12.713683	5.830453
		Ngoyla-Mintom	14.031367	2.626288
		Nki National Park	14.561219	2.456080
	Boumba-et-Ngoko Division	16.284523	2.849145	
	Central African Republic	Dzanga-Sangha Protected Area Complex	17.078889	0.901944
	Democratic Republic of Congo	Bas-Uélé	25.171111	4.1525
		Camp Loius (Bili-Uélé)	24.953333	4.37
		Gangu Forest (Bili-Uélé)	25.079399	4.339623
		Bili-Uéré Domaine de Chasse	25.401305	4.413086
		Tshopo	27.158547	1.139771
		Manzano Forest	16.400109	-2.588134
		Salong National Park (South)	20.032634	-2.561778
	Equatorial Guinea	Rio Muni	9.611051	1.407701
		Monte Alen National Park	10.309461	1.664861
		Gran Caldera Southern Highlands Scientific Reserve	8.506888	3.333933
		Pico Basilé National Park	8.756789	3.587178
		Bailly	18.599008	3.715874
		Batanga	11.501382	-3.886216
		Conkouati-Douli National Park	12.348135	-4.222031
		Dimonika Biosphere Reserve	16.083555	2.038124
Kabo		16.333713	1.418209	
Pokola		18.048210	1.621416	
Impfondo		17.126902	1.318800	
Lac Télé		14.517000	0.180000	
Lossi Sanctuary		14.496024	-0.057258	
Kellé		17.17	2.58667	

Republic of Congo	Loundougou	14.307408	2.161215	
	Messok Dja	16.718607	3.373485	
	Mokabi	11.636337	-2.782433	
	Mont Fouari Reserve	16.444030	0.260011	
	Ngombe-Ntokou-Pikounda	16.612801	2.569566	
	Nouabalé-Ndoki National Park	14.845290	1.319191	
	Odzala-Kokoua National Park	13.617307	1.994926	
	Ogooué-Leketi National Park	17.530556	1.383889	
	Tanga	11.830983	-4.519368	
	Tchimpounga Sanctuary	13.819256	-2.856784	
	Zanaga	10.364468	1.442373	
	Batéké Plateau National Park	12.322116	-1.831064	
	Monts Birougou National Park	12.703183	0.192402	
	Kivoro	9.601894	-2.152713	
	Ndoki-Likouala Conservation Landscape	16.340143	1.729562	
	Ouesso	16.035731	1.600198	
	Gabon	Loango National Park	11.524806	-0.442640
		Waka National Park	11.818804	-2.291224
		Mayombe	11.021760	-3.822676
		Mayumba National Park	12.713566	1.862777
		Minkébé National Park	10.327817	-2.557329
		Moukalaba-Doudou National Park	10.162452	0.805029
		Crystal Mountains National Park	13.788996	0.451641
		Mwagné National Park	9.614313	0.122461
		Pongara National Park	9.456938	-0.525209
		Wonga Wongué Reserve	3.526842	5.188298
		Ogooué-Ivindo Province	12.735369	0.439113
Bambidie		13.1	-0.733333	
Gamba Conservation Complex		10.041511	-2.309876	
La Lopé National Park		11.524333	-0.442426	
Mandji		10.81174	-1.880078	
Foret des Abeilles	11.840395	-1.33498		
Guinea-Bissau	Lagoas de Cufada Natural Park	-15.079728	11.711875	
Kenya	Tana River Delta	39.245523	-1.179399	
	Diani	39.585962	-4.289025	
	Sirimon	37.282788	-0.026119	
Liberia	Sime Darby Oil Palm Concession	-10.111632	7.542088	
Morocco	Cèdre Gouraud Forest	33.416667	-5.166667	
	Azrou	-5.20679	33.427248	
Nigeria	Edumanon National Forest Reserve	4.409368	6.451202	
	Taylor Creek Forest Reserve	6.368558	5.133621	
	Niger Delta	6.160189	5.123326	
	Taraba State	11.078929	7.287417	
	Afi Mountains	9.015259	6.274664	
Republic of Guinea	Bossou	7.65325	-8.494139	
	Simandou	-8.903435	8.512578	
	Boke	-14.263838	10.920880	
Sierra Leone	Loma Mountains National Park	-11.102555	9.173401	
	Lawana	-12.775278	7.998611	
	Bandajuma-Jendema	-11.449806	7.617575	
Tanzania	Selous Game Reserve	38.197205	-7.73542	
	Mogombera Nature Reserve	37.002096	-7.811823	
	Jozani-Chwaka Bay National Park	39.413907	-6.239702	
	Tarangire-Manyara Ecosystem	35.797212	-3.362686	
	Mikumi National Park	37.297544	-6.997115	
Rwanda	Nyungwe Forest Reserve	29.212163	-2.482956	
Senegal	Fongoli	-12.008329	12.421008	
South Africa	Cape Peninsula	18.425695	-34.248075	
	Soutpansberg	29.770032	-23.009524	
	Hogsback	29.433333	-23.033333	
	Cape Vidal Forest	32.533958	-28.052823	
Uganda	Sebitoli	30.402469	0.645122	
	Bulindi	31.466667	1.466667	
	Bwindi Impenetrable National Park	29.693043	-1.036271	
	Lake Nabugado	31.871208	-0.357053	
	Loky Manambato Protected Area	49.700827	-13.092187	
	Ankarafantsika National Park	46.830937	-16.284956	

Madagascar	Madagascar	Ranomafana National Park	47.395046	-21.340324
		Menabe Antimena Protected Area	44.596727	-20.078967
		Anja Community Reserve	46.855039	-21.858342
		Sakaviro	46.958732	-24.084316
		Tsaranoro Valley	47.364573	-22.737776
		Ambatovy	48.308352	-18.831865
Neotropics	Argentina	Sargento Cabral Department	-59.500088	-26.916614
	Belize	Community Baboon Sanctuary	-88.544875	17.55893
	Bolivia	Beni	-67.057277	-14.974166
		Parque Nacional Madidi	-68.335687	-14.190769
	Brazil	Ilhéus	-39.062709	-14.792867
		Lençóis Paulista	-48.791735	-22.587105
		Floresta Nacional de Carajás	-50.161042	-6.069697
		Mato Grosso do Sul	-56.262281	-20.756465
		Ribeirão Preto	-47.893096	-21.209022
		Lago da Fortuna	-69.496834	-6.49684
		Riozinho river	-45.506041	-8.910465
		Peti Environmental Station	-43.368611	-19.899167
		Itaituba	-56.284117	-4.463325
		Federal University of Juiz de Fora	-43.368116	-21.776553
		BR-262 Road	-48.999128	-19.981994
		Porto Alegre	-51.165492	-30.098102
		União Biological Reserve	-42.03851	-22.435052
		Poço das Antas Biological Reserve	-42.269495	-22.505081
		Área de Proteção Ambiental da Bacia do Rio São João	-42.326582	-22.571830
		Santa Catarina	-48.965196	-27.801003
		Mata do Junco Wildlife Refuge	-36.963551	-10.565886
		Mato Grosso	-59.953571	-14.221365
		Bahia	-41.26661	-11.96157
		Espírito Santo	-40.767578	-19.787126
		GO-060 Road	-50.558439	-16.537219
		Tapajós National Forest	-54.921946	-4.106001
		Aripuanã	-59.600564	-4.437724
		Tapajós-Xingu Interfluvium	-54.437	-5.91
		Candeias do Jamari	-63.466839	-8.750014
		Tapajós National Forest	-54.95347	-4.149179
	Manaus	-59.913177	-3.046993	
	Colombia	Middle Magdalena Valley	-73.85	-73.85
	Costa Rica	Refugio Nacional de Vida Silvestre Gandoca-Manzanillo	-82.674959	9.613372
		Santa Rosa National Park	-85.704468	10.83635
		Golfoito	-83.138087	8.616461
		Quepos	-84.124279	9.435527
	Ecuador	Eden-Yuturi Pipeline	-76.011767	-0.572932
		Pochace Wildlife Refuge	-80.88184	-1.066927
		Yasuni National Park and Biosphere Reserve	-75.82999	-1.102559
		Cotacachi-Cayapas Ecological Reserve	-78.612873	0.55129
	French Guiana	Sinnamary	-52.945483	5.103856
	Mexico	Rancho San Román	-92.090808	18.111934
Balancán		-91.533394	17.816489	
Olmec Region		-94.5	17.833333	
Panama	Chiriqui Province	-82.290466	8.357786	
	Azuero Peninsula	-80.601904	7.634701	
	Chucanti Reserve	-78.454235	8.790587	
Peru	Huanuco	-78.198369	-5.144467	
	Alto Mayo Protection Forest	-77.607486	-5.888126	
	Madre dos Dios	-70.649204	-12.076931	
Suriname	Brownsberg Natuurpark	55.170764	4.942885	
Trinidad and Tobago	Trinity Hills	-61.124324	0.108166	
	Bush Bush Forest Reserve	-61.041612	10.374270	
	Central Rage Game Sanctuary	-61.268583	10.424263	
Venezuela	Altiplanicie de Nuria-Tumeremo	-61.33299	7.665007	
	Isla de Margarita	-63.906022	11.008634	

Appendix S3 – Study flowchart



S3a – ROSES (RepOrting standards for Systematic Evidence Syntheses) flowchart detailing our data collection process for this review.

Appendix S4 – Reviewed literature

S4a – List of studies collected throughout this review

- Abra, F. D. (2019). Mammal-vehicle collisions on toll roads in São Paulo state: Implications for wildlife, human safety and costs for society.
- Abram, N. K., Meijaard, E., Wells, J. A., Ancrenaz, M., Pellier, A., Runting, R. K., . . . Mengersen, K. (2015). Mapping perceptions of species' threats and population trends to inform conservation efforts: The Bornean orangutan case study. *Diversity and Distributions*, 21(5), 487-499. doi:10.1111/ddi.12286
- Adimallaiah, D., Thiyagesan, K., & Gupta, A. K. (2014). Population status of Phayre's langur *Trachypithecus phayrei* in Sepahijala Wildlife Sanctuary, Tripura, northeast India. *Primate Conservation*, 2014(28), 159-163. doi:10.1896/052.028.0101
- Agoramoorthy, G. (2009). Primates in the thar desert. In C. Sivaperuman, Q. H. Baqri, G. Ramaswamy & M. Naseema (Eds.), *Faunal ecology and conservation of the great Indian desert* (pp. 177-191). Berlin, Heidelberg: Springer Berlin Heidelberg. doi:10.1007/978-3-540-87409-6_14
- Alamgir, M., Campbell, M. J., Sloan, S., Engert, J., Word, J., & Laurance, W. F. (2020). Emerging challenges for sustainable development and forest conservation in Sarawak, Borneo. *Plos One*, 15(3), e0229614. doi:10.1371/journal.pone.0229614
- Alamgir, M., Campbell, M. J., Sloan, S., Suhardiman, A., Supriatna, J., & Laurance, W. F. (2019). High-risk infrastructure projects pose imminent threats to forests in Indonesian Borneo. *Scientific Reports*, 9(1), 140. doi:10.1038/s41598-018-36594-8
- Al-Razi, H., Maria, M., & Bin Muzaffar, S. (2019). Mortality of primates due to roads and power lines in two forest patches in Bangladesh. *Zoologia*, 36, 1-6. doi:10.3897/zoologia.36.e33540
- Ancrenaz, M., Sollmann, R., Meijaard, E. . . . Wilting, A. (2014). Coming down from the trees: Is terrestrial activity in Bornean orangutans natural or disturbance driven?. *Sci Rep* 4, 4024. doi:10.1038/srep04024
- Andrade, R., Portella de Mourthe, I., Saccarde, V., & Hernandez-Ruz, E. J. (2018). Eastern extension of the geographic range of *Mico emiliae*. *Acta Amazonica*, 48, 257.
- André, M. (2011). Utilization of different habitats in colobus angolensis palliatus in the forests of Diani beach, Kenya.
- Aquino, R., García-Mendoza, G., & Charpentier, E. (2016). Distribution and current status of the Peruvian yellow-tailed woolly monkey (*Lagothrix flavicauda*) in montane forests of the Región Huánuco, Peru. *Primate Conservation*, 30, 31-37.
- Aquino, R., Ricardo Zárate, Luís López, Gabriel García, & Charpentier, E. (2015). Current status and threats to *Lagothrix flavicauda* and other primates in montane forest of the Región Huánuco. *Primate Conservation*, 2015(29), 31-41. doi:10.1896/052.029.0111
- Ascensão, F., Niebuhr, B. B., Moraes, A. M., Alexandre, B. R., Assis, J. C., Alves-Eigenheer, M., . . . Ribeiro, M. C. (2019). End of the line for the golden lion tamarin? A single road threatens 30 years of conservation efforts. *Conservation Science and Practice*, 1(9), e89. doi:10.1111/csp2.89
- Asensio, N., Murillo-Chacon, E., Schaffner, C. M., & Aureli, F. (2017). The effect of roads on spider monkeys' home range and mobility in a heterogeneous regenerating forest. *Biotropica*, 49(4), 546-554. doi:10.1111/btp.12441

- Ayanlade, A., & Drake, N. (2016). Forest loss in different ecological zones of the Niger Delta, Nigeria: Evidence from remote sensing. *Geojournal*, 81(5), 717-735. doi:10.1007/s10708-015-9658-y
- Azhar, B., Lindenmayer, D., Wood, J., Fischer, J., Manning, A., McElhinny, C., & Zakaria, M. (2013). Contribution of illegal hunting, culling of pest species, road accidents and feral dogs to biodiversity loss in established oil-palm landscapes. *Wildlife Research*, 40(1), 1-9. doi:10.1071/WR12036
- Bachman, S., Field, R., Reader, T., Raimondo, D., Donaldson, J., Schatz, G., Lughadha, E. (2019). Progress, challenges and opportunities for Red Listing. *Biological Conservation*, 234, 45-55. doi:10.1016/j.biocon.2019.03.002
- Balakrishnan, M., & PG, S. (1998). A study on the animal diversity in the proposed Athirapally hydro-electric project area in Kerala. *International Journal of Ecology and Environmental Sciences*, 24, 393-410.
- Balbuena, D., Alonso, A., Panta, M., Garcia, A., & Gregory, T. (2019). Mitigating tropical forest fragmentation with natural and semi-artificial canopy bridges. *Diversity*, 11, 66. doi:10.3390/d11040066
- Baskaran, N., & Boominathan, D. (2010). Road kill of animals by highway traffic in the tropical forests of Mudumalai Tiger Reserve, southern India. *Journal of Threatened Taxa*, 2(3), 753-759. doi:10.11609/JoTT.o2101.753-9
- Beamish, E. K. (2009). Causes and consequences of mortality and mutilation in the cape peninsula baboon population, South Africa; causes and consequences of mortality and mutilation in the cape peninsula baboon population, South Africa. University of Cape Town.
- Beirne, C., Meier, A. C., Mbele, A. E., Menie Menie, G., Froese, G., Okouyi, J., & Poulsen, J. R. (2019). Participatory monitoring reveals village-centred gradients of mammalian defaunation in central africa. *Biological Conservation*, 233, 228-238. doi:10.1016/j.biocon.2019.02.035
- Bergl, R. A., Warren, Y., Nicholas, A., Dunn, A., Imong, I., Sunderland-Groves, J. L., & Oates, J. F. (2012). Remote sensing analysis reveals habitat, dispersal corridors and expanded distribution for the critically endangered Cross-River gorilla *Gorilla gorilla diehli*. *Oryx*, 46(2), 278-289. doi:10.1017/S0030605310001857
- Bhutan Consultants and Research. (2013). BHU: Second green power development project (part A: Hydropower plant component) main report. Thapa, Thimphu: Asian Development Bank.
- Birdlife International. (2020). Important bird areas factsheet: Ban Bung. Retrieved 30/07/2020 from <http://datazone.birdlife.org/site/factsheet/ban-bung-iba-vietnam>
- Biro, H., Campera, M., Imron, M. A., & Nekaris, K. A. I. (2020). Artificial canopy bridges improve connectivity in fragmented landscapes: The case of Javan slow lorises in an agroforest environment. *American Journal of Primatology*, 82(4), e23076. doi:10.1002/ajp.23076
- Bleisch, W., & Nan, C. (1990). Conservation of the black-crested gibbon in china. *Oryx*, 24(3), 147-156. doi:10.1017/S0030605300033871
- Blom, A., Van Zalinge, R., Mbea, E., Heitkönig, I. M. A., & Prins, H. H. T. (2004). Human impact on wildlife populations within a protected central African forest. *African Journal of Ecology*, 42(1), 23-31. doi:10.1111/j.0141-6707.2004.00441.x
- Blom, A., van Zalinge, R., Heitkönig, I. M. A., & Prins, H. H. T. (2005). Factors influencing the distribution of large mammals within a protected central African forest. *Oryx*, 39(4), 381-388. doi:10.1017/S0030605305001080
- Boinski, S., Jack, K., Lamarsh, C., & Coltrane, J. A. (1998). Squirrel monkeys in costa Rica: Drifting to extinction. *Oryx*, 32(1), 45-58. doi:10.1046/j.1365-3008.1998.00017.x
- Boonratana, R. (2020). Of road kills and dead langurs. *Malaysian Naturalist*, 57, 34-39.

- Boonratana, R., & Le, X. C. (2013). Coping with fragmented forests: The critically endangered Tonkin snub-nosed monkeys (*Rhinopithecus avunculus*) in Vietnam. In L. K. Marsh, & C. A. Chapman (Eds.), *Primates in fragments: Complexity and resilience* (pp. 313-327). New York, NY: Springer New York. doi:10.1007/978-1-4614-8839-2_21
- Bortolamiol, S., Cohen, M., Jiguet, F., Pennec, F., Seguya, A., & Krief, S. (2016). Chimpanzee non-avoidance of hyper-proximity to humans. *The Journal of Wildlife Management*, 80(5), 924-934. doi:10.1002/jwmg.1072
- Boyer Ontl, K. M. (2017). Chimpanzees in the island of gold: Impacts of artisanal small-scale gold mining on chimpanzees (*Pan troglodytes verus*) in Fongoli, Senegal.
- Brandt, J. S., Butsic, V., Schwab, B., Kuemmerle, T., & Radeloff, V. C. (2015). The relative effectiveness of protected areas, a logging ban, and sacred areas for old-growth forest protection in southwest China. *Biological Conservation*, 181, 1-8. doi:10.1016/j.biocon.2014.09.043
- Brugière, D., & Gautier, J. (1999). Status and conservation of the sun-tailed guenon *Cercopithecus solatus*, Gabon's endemic monkey. *Oryx*, 33(1), 66-73. doi:10.1046/j.1365-3008.1999.00036.x
- Bryson-Morrison, N., Tzanopoulos, J., Matsuzawa, T., & Humle, T. (2017). Activity and habitat use of chimpanzees (*Pan troglodytes verus*) in the anthropogenic landscape of Bossou, Guinea, West Africa. *International Journal of Primatology*, 38(2), 282-302. doi:10.1007/s10764-016-9947-4
- Bui, V., Tan, C., Tam, N., Hoang Quoc, H., Thinh, V., & Phillips, J. (2019). A large population of the northern yellow-cheeked gibbon (*Nomascus annamensis*) and new records on the primate diversity in Ba Na-Nui Chua Nature Reserve, Danang, vietnam.3, 27-40.
- Butynski, T. M., & Koster, S. H. (1994). Distribution and conservation status of primates in Bioko Island, Equatorial Guinea. *Biodiversity & Conservation*, 3(9), 893-909. doi:10.1007/BF00129665
- Bynum, E. L., Bynum, D. Z., & Supriatna, J. (1997). Confirmation and location of the hybrid zone between wild populations of *Macaca tonkeana* and *Macaca hecki* in central Sulawesi, Indonesia. *American Journal of Primatology*, 43(3), 181-209. doi:10.1002/(SICI)1098-2345(1997)43:3<181::AID-AJP1>3.0.CO;2-T
- Bynum, N. (2002). Morphological variation within a macaque hybrid zone. *American Journal of Physical Anthropology*, 118(1), 45-49. doi:10.1002/ajpa.10060
- Caceres, N. C. (2011). Biological characteristics influence mammal road kill in an Atlantic Forest–Cerrado interface in south-western Brazil. *International Journal of Zoology*, 78(3), 379-389. doi:10.1080/11250003.2011.566226
- Campbell, L. A. D., Tkaczynski, P. J., Mouna, M., Qarro, M., Waterman, J., & Majolo, B. (2016). Behavioral responses to injury and death in wild barbary macaques (*Macaca sylvanus*). *Primates*, 57(3), 309-315. doi:10.1007/s10329-016-0540-4
- Carolina Gómez-Posada, Jesús Martínez, Giraldo, P., & Kattan, G. H. (2007). Density, habitat use, and ranging patterns of red howler monkeys in a Colombian Andean forest. *Neotropical Primates*, 14(1), 2-10. doi:10.1896/044.014.0102
- Carvalho, J. S., Marques, T. A., & Vicente, L. (2013). Population status of *Pan troglodytes verus* in Lagoas de Cufada Natural Park, Guinea-Bissau. *Plos One*, 8(8), e71527. doi:10.1371/journal.pone.0071527
- Casado, N., & Garriga, R. M. (2017). Chimpanzee rapid survey assessment: Bandajuma-Liberia border road. Freetown, Sierra Leone: Tacaguma Chimpanzee Sanctuary.
- Ceballos-Mago, N., & Chivers, D. J. (2013). A critically-endangered capuchin (*Sapajus apella margaritae*) living in mountain forest fragments on Isla de Margarita, Venezuela. In L. K. Marsh, & C. A. Chapman (Eds.), *Primates in fragments: Complexity and resilience* (pp. 183-195). New York, NY: Springer New York. doi:10.1007/978-1-4614-8839-2_13

- Cervera, L., Lizcano, D. J., Tirira, D. G., & Donati, G. (2015). Surveying two endangered primate species (*Alouatta palliata aequatorialis* and *Cebus aequatorialis*) in the Pacoche marine and coastal wildlife refuge, west Ecuador. *International Journal of Primatology*, 36(5), 933-947. doi:10.1007/s10764-015-9864-y
- Chan, B., Fellowes, J., Geissmann, T., & Zhang, J. (2005). Status survey and conservation action plan for the Hainan gibbon.
- Chapman, C., Twinomugisha, D., Teichroeb, J., Valenta, K., Sengupta, R., Sarkar, D., & Rothman, J. (2016). How do primates survive among humans? Mechanisms employed by vervet monkeys at lake Nabugado, Uganda. *Ethnoprimatology* (pp. 77-94) doi:10.1007/978-3-319-30469-4_5
- Charmalie, A. D. N., Huffman, M. A., Kuruppu, N., & Weerasingha, T. (2008). Diurnal primates in Sri Lanka and people's perception of them. *Primate Conservation*, 23(1), 81-87. doi:10.1896/052.023.0109
- Chetry, R., & Chetry, D. (2009). Report on the golden langur, *Presbytis entellus*. Assam, India: Gibbon Conservation Centre.
- Chetry, D., Chetry, R., Ghosh, K., & Alok, K. S. (2010). Status and distribution of the eastern hoolock gibbon (*Hoolock leuconedys*) in Mehao Wildlife Sanctuary, Arunachala Pradesh, India. *Primate Conservation*, 2010(25), 87-94. doi:10.1896/052.025.0113
- Cheyne, S., Thompson, C., & Chivers, D. (2013). Travel adaptations of Bornean agile gibbons *Hylobates albibarbis* (primates: Hylobatidae) in a degraded secondary forest, Indonesia. *Journal of Threatened Taxa*, 5, 3963-3968. doi:10.11609/JoTT.o3361.3963-8
- Chhangani, A. (2004). Killing of hanuman langur (*Semnopithecus entellus*) in road accidents in Kumbhalgarh Wildlife Sanctuary, Rajasthan, India. *Primate Report*, 69, 49.
- Chhangani, A. (2006). Population dynamics of hanuman langur, *Semnopithecus entellus* around jodhpur (India) during 1995-2000. *Proceedings of the National Academy of Sciences, India - Section A*, 76(B), 141-147.
- Choudhury, A. (2002). Golden langur *trachypithecus geei* threatened by habitat fragmentation. *Zoos' Print Journal*, 17(2), 699-703.
- Cibot, M., Bortolamiol, S., Seguya, A., & Krief, S. (2015). Chimpanzees facing a dangerous situation: A high-traffic asphalted road in the Sebitoli area of Kibale National Park, Uganda. *American Journal of Primatology*, 77(8), 890-900. doi:10.1002/ajp.22417
- Clark, C. J., Poulsen, J. R., Malonga, R., & Elkan, J., P.W. (2009). Logging concessions can extend the conservation estate for central African tropical forests. *Conservation Biology*, 23(5), 1281-1293. doi:10.1111/j.1523-1739.2009.01243.x
- Clarke, T. A. (2015). Genetic consequences of occupying a highly fragmented landscape among ring-tailed lemurs (*Lemur catta*) in south-central Madagascar.
- Clarke, M. R., & Glander, K. E. (2008). Natal emigration by both sexes in the La Pacifica population of mantled howlers: When do some stay? *American Journal of Primatology*, 70(2), 195-200. doi:10.1002/ajp.20473
- Clauzel, C., Xiqing, D., Gongsheng, W., Giraudoux, P., & Li, L. (2015). Assessing the impact of road developments on connectivity across multiple scales: Application to Yunnan snub-nosed monkey conservation. *Biological Conservation*, 192, 207-217. doi:10.1016/j.biocon.2015.09.029
- Comiskey, J., Sunderland, T., & Sunderland-Groves, J. (2003). *Takamanda: The biodiversity of an African rainforest* (8th ed.). Washington, DC: Smithsonian Institution. doi:10.13140/2.1.3192.5449
- Corrêa, F. M., Chaves, Ó. M., Printes, R. C., & Romanowski, H. P. (2018). Surviving in the urban-rural interface: Feeding and ranging behavior of brown howlers (*Alouatta guariba clamitans*) in an urban fragment in southern Brazil. *American Journal of Primatology*, 80(6), e22865. doi:10.1002/ajp.22865

- Costa-Araújo, R., de Melo, F., & Canale, GR., . . . Hrbek, T. (2019). The munduruku marmoset: A new monkey species from southern Amazonia.
- Cronin, D. T., Bocuma Meñe, D., Perella, C., Fernández, D., Hearn, G. W., & Gonder, M. K. (2015). The future of the biodiversity of the gran caldera scientific reserve: Translating science into policy to develop an effective management plan.
- Cronin, D. T., Riaco, C., Linder, J. M., Bergl, R. A., Gonder, M. K., O'Connor, M. P., & Hearn, G. W. (2016). Impact of gun-hunting on monkey species and implications for primate conservation on Bioko Island, Equatorial Guinea. *Biological Conservation*, 197, 180-189. doi:<https://doi.org/10.1016/j.biocon.2016.03.001>
- Cunha, H., Moreira, F., & Silva, S. (2010). Roadkill of wild vertebrates along the GO-060 road between Goiânia and Iporá, Goiás state, Brazil. *Acta Scientiarum*, 32 doi:10.4025/actasciobiols.v32i3.4752
- Cunneyworth, P. M. K., & Duke, J. (2020). Vehicle collisions among four species of monkeys between 2000 and 2018 on a suburban road in Diani, Kenya. *International Journal of Primatology*, 41(1), 45-60. doi:10.1007/s10764-020-00135-w
- Das, J., Biswas, J., Bhattacharjee, P. C., & Mohnot, S. (2006). First distribution records of the eastern hoolock gibbon *Hoolock hoolock leuconedys* from India. *Zoos' Print Journal*, 21 doi:10.11609/JoTT.ZPJ.1530.2316-20
- Das, J., Biswas, J., Bhattacharjee, P., & Rao, S. S. (2009). Canopy bridges: An effective conservation tactic for supporting gibbon populations in forest fragments. (pp. 467-475) doi:10.1007/978-0-387-88604-6_22
- Das, N., Nekaris, K. A. I., Biswas, J., Das, J., & Bhattacharjee, P. C. (2015). Persistence and protection of the vulnerable Bengal slow loris *Nycticebus bengalensis* in Assam and Arunachala Pradesh, north-east India. *Oryx*, 49(1), 127-132. doi:10.1017/S0030605312001287
- Das, S., Erinjery, J. J., Desai, N., K., M., Kumara, H., & Singh, M. (2018). Deceased-infant carrying in nonhuman anthropoids: Insights from systematic analysis and case studies of bonnet macaques (*Macaca radiata*) and lion-tailed macaques (*Macaca silenus*). *Journal of Comparative Psychology*, 133 doi:10.1037/com0000140
- Decker, B. S. (1994). Endangered primates in the Selous Game Reserve and an imminent threat to their habitat. *Oryx*, 28(3), 183-190. doi:10.1017/S0030605300028544
- Defler, T.R. (2009). Some evolutionary tendencies of Neotropical primates: Algunas tendencias evolutivas de los primates Neotropicales. *Acta Biológica Colombiana*, 14(1), 399-414.
- Dela, J. (2011). Impact of monkey-human relationships and habitat change on *Semnopithecus vetulus nestor* in human modified habitats. *Journal of the National Science Foundation of Sri Lanka*, 39 doi:10.4038/jnsfsr.v39i4.3885
- DeLuycker, A. M. (2006). Preliminary report and conservation status of the Río Mayo titi monkey, *Callicebus oenanthe* Thomas, 1924, in the Alto Mayo valley, north-eastern Peru. *Primate Conservation*, 2006(21), 33-39. doi:10.1896/0898-6207.21.1.33
- Deng, H., Cui, H., Zhao, Q., Pan, R., Zhou, J., & Lan, A. (2019). Constrained François' langur (*Trachypithecus francoisi*) in Yezhong Nature Reserve, Guizhou, China. *Global Ecology and Conservation*, 19, e00672. doi:10.1016/j.gecco.2019.e00672
- Dittus, W. P. J. (2013). Arboreal adaptations of body fat in wild toque macaques (*Macaca sinica*) and the evolution of adiposity in primates. *American Journal of Physical Anthropology*, 152(3), 333-344. doi:10.1002/ajpa.22351
- do Vale, C. A., Sant'Anna, A. C., Júnior, J.,Geraldo Castro, & Prezoto, F. (2020). Reflections on potential risk factors of Callithricidae run over in an urban area: A case report of marmoset deaths. *Journal of Applied Animal Welfare Science*, 1-8. doi:10.1080/10888705.2020.1785883

- Dong, X., Chu, Y., Gu, X., Huang, Q., Zhang, J., & Bai, W. (2019). Suitable habitat prediction of Sichuan snub-nosed monkeys (*Rhinopithecus roxellana*) and its implications for conservation in Baihe Nature Reserve, Sichuan, China. *Environmental Science and Pollution Research International*, 26(31), 32374-32384. doi:10.1007/s11356-019-06369-3
- Drews, C. (1995). Road kills of animals by public traffic in Mikumi National Park, Tanzania, with notes on baboon mortality. *African Journal of Ecology*, 33(2), 89-100. doi:10.1111/j.1365-2028.1995.tb00785.x
- Druelle, F., Aerts, P., Ngawolo, J. C. B., & Narat, V. (2020). Impressive arboreal gap-crossing behaviours in wild bonobos, *Pan paniscus*. *International Journal of Primatology*, 41(1), 129-140. doi:10.1007/s10764-020-00140-z
- Duarte, M. H. L., Kaizer, M. C., Young, R. J., Rodrigues, M., & Sousa-Lima, R. (2018). Mining noise affects loud call structures and emission patterns of wild black-fronted titi monkeys. *Primates*, 59(1), 89-97. doi:10.1007/s10329-017-0629-4
- Duc, H., Quyet, L. K., Rawson, B. M., O'Brien, J., & Covert, H. (2020). *Pygathrix nigripes*. The IUCN Red List of Threatened Species, doi:10.2305/IUCN.UK.2020-2.RLTS.T39828A17941480.en.
- Duckworth, J. W., Salter, R. E., & Khounbolin, K. (1999). Wildlife in lao PDR 1999 status report. Vientiane, Laos: IUCN.
- Duckworth, J. W., Boonratana, R., Robichaud, W. G., & Timmins, R. J. (2010). A review of François' leaf monkey *Trachypithecus francoisi* in lao PDR. *Primate Conservation*, 2010(25), 61-79. doi:10.1896/052.025.0111
- Dulac, J. (2013). Global land transport and infrastructure requirements. Paris, France: IES.
- Dunham, A. E., Erhart, E. M., Overdorff, D. J., & Wright, P. C. (2008). Evaluating effects of deforestation, hunting, and El Niño events on a threatened lemur. *Biological Conservation*, 141(1), 287-297. doi:10.1016/j.biocon.2007.10.006
- Dunn, A., Bergl, R., Byler, D., Eben-Ebai, S., Ndeloh, D. E., Fotso, R., . . . Williamson, L. (2014). Revised regional action plan for the conservation of the Cross-River gorilla (*Gorilla gorilla diehli*) 2014–2019. New York, NY: IUCN SSC Primate Specialist Group & Wildlife Conservation Society. doi:10.13140/RG.2.2.30869.93927
- Ebenau, A., Nadler, T., Zinner, D., & Roos, C. (2011). Genetic population structure of the critically endangered Delacour's langur in van long nature reserve, Vietnam. *Vietnamese Journal of Primatology*, 1, 1-15.
- Eniang, E. A. (2003). Effects of habitat fragmentation on the Cross-River gorilla (*Gorilla gorilla diehli*): Recommendations for conservation. In L. K. Marsh (Ed.), *Primates in fragments: Ecology and conservation* (pp. 343-363). Boston, MA: Springer US. doi:10.1007/978-1-4757-3770-7_22
- Erinjery, J. J., Kumar, S., Kumara, H. N., Mohan, K., Dhananjaya, T., Sundararaj, P., . . . Singh, M. (2017). Losing its ground: A case study of fast declining populations of a 'least-concern' species, the bonnet macaque (*Macaca radiata*). *Plos One*, 12(8), e0182140. doi:10.1371/journal.pone.0182140
- Espinosa, S., Branch, L. C., & Cueva, R. (2014). Road development and the geography of hunting by an Amazonian indigenous group: Consequences for wildlife conservation. *Plos One*, 9(12), e114916. doi:10.1371/journal.pone.0114916
- Espinosa-Andrade, S. F. (2012). Road development, bushmeat extraction, and jaguar conservation in Yasuni biosphere reserve.
- Estrada, A., Garber, P.A., Mittermeier, R.A., Wich, S., Gouveia, S., Dobrovolski, R., . . . Setiawan, A. (2018) Primates in peril: the significance of Brazil, Madagascar, Indonesia and the Democratic Republic of the Congo for global primate conservation. *PeerJ*, 6, e4869. doi:10.7717/peerj.4869

- Estrada, A., Garber, P. A., Rylands, A. B., Roos, C., Fernandez-Duque, E., Di Fiore, A., . . . Li, B. (2017). Impending extinction crisis of the world's primates: Why primates matter. *Sci Adv*, 3(1), e1600946. doi:10.1126/sciadv.1600946
- Fa, J. E. (1984). Structure and dynamics of the barbary macaque population in Gibraltar. In J. E. Fa (Ed.), *The barbary macaque: A case study in conservation* (pp. 263-306). Boston, MA: Springer US. doi:10.1007/978-1-4613-2785-1_11
- Ferrari, S. F., Sena, L., Schneider, M. P. C., & Júnior, J. S. S. (2010). Rondon's marmoset, *Mico rondoni* sp. n., from southwestern Brazilian Amazonia. *International Journal of Primatology*, 31(5), 693-714. doi:10.1007/s10764-010-9422-6
- Ferreguetti, A. C., Graciano, J. M., Luppi, A. P., Pereira-Ribeiro, J., Rocha, C. F. D., & Bergallo, H. G. (2020). Roadkill of medium to large mammals along a Brazilian road (BR-262) in south-eastern Brazil: Spatial distribution and seasonal variation. *Studies on Neotropical Fauna and Environment*, , 1-10. doi:10.1080/01650521.2020.1719006
- Fransson, L. (2018). Fine scale habitat and movement patterns of Javan slow loris (*Nycticebus javanicus*) in Cipaganti, West Java, Indonesia.
- Franzen, M. (2006). Evaluating the sustainability of hunting: A comparison of harvest profiles across three Hourani communities. *Environmental Conservation*, 33(1), 36-45. doi:10.1017/S0376892906002712
- Froese, G. Z. L., Contasti, A. L., Mustari, A. H., & Brodie, J. F. (2015). Disturbance impacts on large rain-forest vertebrates differ with edge type and regional context in Sulawesi, Indonesia. *Journal of Tropical Ecology*, 31(6), 509-517. doi:10.1017/S0266467415000450
- Fuentes, A., Kalchik, S., Gettler, L., Kwiatt, A., Konecki, M., & Jones-Engel, L. (2008). Characterizing human-macaque interactions in Singapore. *American Journal of Primatology*, 70(9), 879-883. doi:10.1002/ajp.20575
- Gamage, S. N., Groves, C. P., Marikar, F. M. M. T., Turner, C. S., Padmalal, K. U. K. G., & Kotagama, S. W. (2017). The taxonomy, distribution, and conservation status of the slender loris (primates, Lorisidae: Loris) in Sri Lanka. *Primate Conservation*, 31, 83-106.
- Garbino, G. S. T. (2014). The taxonomic status of mico marcai (Alperin 1993) and *Mico manicorensis* (van Rosmalen et al. 2000) (Cebidae, Callitrichinae) from southwestern Brazilian Amazonia. *International Journal of Primatology*, 35(2), 529-546. doi:10.1007/s10764-014-9766-4
- Garcia, J. E., & Mba, J. (1997). Distribution, status and conservation of primates in Monte Alen National Park, Equatorial Guinea. *Oryx*, 31(1), 67-76. doi:10.1046/j.1365-3008.1997.d01-5.x
- Garriga, R. M., Marco, I., Casas-Díaz, E., Acevedo, P., Amarasekaran, B., Cuadrado, L., & Humle, T. (2019). Factors influencing wild chimpanzee (*Pan troglodytes verus*) relative abundance in an agriculture-swamp matrix outside protected areas. *Plos One*, 14(5), e0215545. doi:10.1371/journal.pone.0215545
- Gaveau, D. L. A., Wich, S., Epting, J., Juhn, D., Kanninen, M., & Leader-Williams, N. (2009). The future of forests and orangutans (*Pongo abelii*) in Sumatra: Predicting impacts of oil palm plantations, road construction, and mechanisms for reducing carbon emissions from deforestation. *Environmental Research Letters*, 4(3), 034013. doi:10.1088/1748-9326/4/3/034013
- Geissmann, T., Lwin, N., Aung, S. S., Aung, T. N., Aung, Z. M., Hla, T. H., . . . Momberg, F. (2011). A new species of snub-nosed monkey, genus *Rhinopithecus* Milne Edwards, 1872 (primates, Colobinae), from northern Kachin state, north-eastern Myanmar. *American Journal of Primatology*, 73(1), 96-107. doi:10.1002/ajp.20894
- Ghent, C. (2018). Mitigating the Effects of Transport Infrastructure Development on Ecosystems. *Consilience*, (19). doi:10.7916/consilience.v0i19.3892

- Gonçalves, E. C., Ferrari, S. F., Silva, A., Coutinho, P. E. G., Menezes, E. V., & Schneider, M. P. C. (2003). Effects of habitat fragmentation on the genetic variability of silvery marmosets, *Mico argentatus*. In L. K. Marsh (Ed.), *Primates in fragments: Ecology and conservation* (pp. 17-28). Boston, MA: Springer US. doi:10.1007/978-1-4757-3770-7_3
- Gordo, M., Calleia, F. O., Vasconcelos, S. A., Leite, J. J. F., & Ferrari, S. F. (2013). The challenges of survival in a concrete jungle: Conservation of the pied tamarin (*Saguinus bicolor*) in the urban landscape of Manaus, Brazil. In L. K. Marsh, & C. A. Chapman (Eds.), *Primates in fragments: Complexity and resilience* (pp. 357-370). New York, NY: Springer New York. doi:10.1007/978-1-4614-8839-2_23.
- Gregory, T., Carrasco-Rueda, F., Deichmann, J., Kolowski, J., & Alonso, A. (2017). Primate response to natural gas pipeline construction in the Peruvian Amazon. *Biotropica*, 49(2), 249-255. doi:10.1111/btp.12406
- Gregory, T., Carrasco-Rueda, F., Deichmann, J., Kolowski, J., Costa Faura, M., Dallmeier, F., & Alonso, A. (2013). Methods to establish canopy bridges to increase natural connectivity in linear infrastructure development. *Society of Petroleum Engineers Journal*, doi:10.2118/165598-MS
- Gumier-Costa, F., & Sperber, C.F. (2009). Roadkill of vertebrates in Carajás National Forest, Para, Brazil. *Acta Amazonica*, 39, 459.
- Gusmão, A., Messias, M., Carneiro, J., Schneider, H., Alencar, T., Calouro, A., . . . Barnett, A. (2020). A new species of titi monkey, *Plecturocebus byrne* (primates, Pitheciidae), from southwestern Amazonia, Brazil. *Primate Conservation*, 33, 15.
- Ha, T. L. (2010). Behavioural ecology of grey-shanked douc monkeys in Vietnam.
- Hai, D. T. (2011). Ecology, behavior and conservation of the Tonkin snub-nosed monkey (*Rhinopithecus avunculus*) in Vietnam.
- Han, Z., Hu, G., Wu, S., Cao, C., & Dong, X. (2013). A census and status review of the endangered François' langur *Trachypithecus francoisi* in Chongqing, China. *Oryx*, 47(1), 128-133. doi:10.1017/S0030605311001396
- Hansen, M. F., Nawangsari, V. A., van Beest, F. M., Schmidt, N. M., Fuentes, A., Traeholt, C., . . . Dabelsteen, T. (2019). Estimating densities and spatial distribution of a commensal primate species, the long-tailed macaque (*Macaca fascicularis*). *Conservation Science and Practice*, 1(9), e88. doi:10.1111/csp2.88
- Harcourt, A. H. (1981). Can Uganda's gorillas survive?—A survey of the Bwindi Forest Reserve. *Biological Conservation*, 19(4), 269-282. doi:10.1016/0006-3207(81)90003-3
- Harris, E. E., Cristiani Gifalli-lughetti, Zelinda, H. B., & Céilia P. Koiffmann. (2005). Cytochrome B sequences show subdivision between populations of the brown howler monkey (*Alouatta guariba*) from Rio de Janeiro and Santa Catarina, Brazil. *Neotropical Primates*, 13(2), 16-21. doi:10.1896/1413-4705.13.2.16
- Hart, J., Laudisoit, A., Struhsaker, T. T., & Oates, J. F. (2020). *Ptilocolobus langi*. The IUCN Red List of Threatened Species.
- Hatti, S. S., & Mubeen, H. (2019). Roadkill of animals on the road passing from Kalaburagi to Chincholi, Karnataka, India. *Journal of Threatened Taxa*, 11(7), 13868-13874. doi:10.11609/jott.4292.11.7.13868-13874
- Haurez, B., Petre, C., Vermeulen, C., Tagg, N., & Doucet, J. (2014). Western lowland gorilla density and nesting behavior in a Gabonese forest logged for 25 years: Implications for gorilla conservation. *Biodiversity and Conservation*, 23(11), 2669-2687. doi:10.1007/s10531-014-0743-1
- Haus, T., Vogt, M., Forster, B., Vu, N. T., & Ziegler, T. (2009). Distribution and population densities of diurnal primates in the karst forests of Phong Nha – Ke Bang National Park, Quang Binh province, central Vietnam. *International Journal of Primatology*, 30(2), 301-312. doi:10.1007/s10764-009-9343-4

- Hernández-Pérez, E. (2016). Rope bridges: A strategy for enhancing habitat connectivity of the black howler monkey (*Alouatta pigra*). *Neotropical Primates*, 22, 94-96.
- Hicks, T. C., Darby, L., Hart, J., Swinkels, J., January, N., & Menken, S. (2010). Trade in orphans and bushmeat threatens one of the Democratic Republic of the Congo's most important populations of eastern chimpanzees (*Pan troglodytes schweinfurthii*). *African Primates*, 7(1), 1-18.
- Hicks, T. C., Roessingh, P., & Menken, S. B. J. (2013). Impact of humans on long-distance communication behaviour of eastern chimpanzees (*Pan troglodytes schweinfurthii*) in the northern Democratic Republic of the Congo. *Folia Primatologica*, 84(3-5), 135-156. doi:10.1159/000350650
- Hicks, T. C., Roessingh, P., & Menken, S. B. J. (2012). Reactions of Bili-Uele chimpanzees to humans in relation to their distance from roads and villages. *American Journal of Primatology*, 74(8), 721-733. doi:10.1002/ajp.22023
- Hicks, T. C., Tranquilli, S., Kuehl, H., Campbell, G., Swinkels, J., Darby, L., . . . Menken, S. B. J. (2014). Absence of evidence is not evidence of absence: Discovery of a large, continuous population of *Pan troglodytes schweinfurthii* in the central Uele region of northern DRC. *Biological Conservation*, 171, 107-113. doi:10.1016/j.biocon.2014.01.002
- Hoang Minh, D. (2009). Ecology and conservation status of the black-shanked douc (*Pygathrix nigripes*) in Nui Chua and Phuoc Binh National Parks, Ninh Thuan province, Vietnam.
- Hockings, K. J., Anderson, J. R., & Matsuzawa, T. (2006). Road crossing in chimpanzees: A risky business. *Current Biology*, 16(17), 668-670. doi:10.1016/j.cub.2006.08.019
- Hockings, K. J., Yamakoshi, G., Kabasawa, A., & Matsuzawa, T. (2010). Attacks on local persons by chimpanzees in Bossou, Republic of Guinea: Long-term perspectives. *American Journal of Primatology*, 72(10), 887-896. doi:10.1002/ajp.20784
- Hockings, K. J. (2011). Behavioral flexibility and division of roles in chimpanzee road-crossing. In T. Matsuzawa, T. Humle & Y. Sugiyama (Eds.), *The chimpanzees of Bossou and Nimba* (pp. 221-229). Tokyo: Springer Japan. doi:10.1007/978-4-431-53921-6_24
- Hsu, M. J., & Agoramorthy, G. (1996). Conservation status of primates in Trinidad, West Indies. *Oryx*, 30(4), 285-291. doi:10.1017/S0030605300021785
- Huang, Y., Xiang, J., Wang, C., Ren, D., Johnson, D., & Xu, T. (2019). Lichen as a biomonitor for vehicular emission of metals: A risk assessment of lichen consumption by the Sichuan snub-nosed monkey (*Rhinopithecus roxellana*). *Ecotoxicology and Environmental Safety*, 180, 679-685. doi:10.1016/j.ecoenv.2019.05.047
- Huijser, M., Mosler-Berger, C., Olsson, M., & Strein, M. (2015). Wildlife Warning Signs and Animal Detection Systems Aimed at Reducing Wildlife-Vehicle Collisions. doi:10.1002/9781118568170.ch24
- Humle, T., & Hill, C. (2016). People-primate interactions: Implications for primate conservation. In S. A. Wich, & A. J. Marsall (Eds.), *An introduction to primate conservation* (pp. 219-240). Oxford, UK: Oxford University Press. doi:10.1093/acprof:oso/9780198703389.003.0014
- Ikapi, T. M. (2016). An oil and gas company operating in an area of high biodiversity - A model for sustainable development and social responsibility. doi:10.2118/183587-MS
- Imam, E., & Ahmad, A. (2013). Population status of rhesus monkey (*Macaca mulatta*) and their menace: A threat for future conservation. doi:10.6088/ijes.2013030400007
- Inogwabini, B., & Thompson, J. (2013). The golden-bellied mangabey *Cercocebus chrysogaster* (primates: Cercopithecidae): Distribution and conservation status. *Journal of Threatened Taxa*, 5, 4069-4075. doi:10.11609/JoTT.o3185.4069-75

- IUCN. (2020a). IUCN Red List of Threatened Species: Threats. Retrieved 03/08/2020 from <https://www.iucnredlist.org/search?threats=4&searchType=species>
- IUCN. (2020b). IUCN Red List of Threatened Species: Resources. Retrieved 12/08/2020 from <https://www.iucnredlist.org/resources/spatial-data-download>
- IUCN. (2021). Threats Classification Scheme (Version 3.2). Retrieved 16/03/2021 from <https://www.iucnredlist.org/resources/threat-classification-scheme>
- Izah, S. C., & Seiyaboh, E. I. (2018). Changes in the protected areas of Bayelsa state, Nigeria. *International Journal of Molecular Evolution and Biodiversity*, 8(1), 1-11.
- Javier García, Defler, T. R., & Bueno, M. L. (2010). The conservation status of *Callicebus caquetensis* (Pitheciidae): A new species in southern Caquetá Department, Colombia. *Neotropical Primates*, 17(2), 37-46. doi:10.1896/044.017.0201
- Jędrusik, M., Lisowski, A., Mouketou-Tarazewicz, D., Ropivia, M., & Zagajewski, B. (2015). Touristic development of the La Lopé National Park (Gabon) in light of the SWOT analysis. *Miscellanea Geographica*, 19(3), 5-13. doi:10.1515/mgrsd-2015-0008
- Jeganathan, P., Mudappa, D., Raman, T. R. S., & Kumar, M. (2019). Understanding perceptions of people towards lion-tailed macaques in a fragmented landscape of the Annamalai Hills, Western Ghats, India. *Primate Conservation*, 32, 11.
- Jimba, K., Adhikarey, H., Wangdi, P. D., Sherpa, L., Tshering, P., & Dorji, D. (1998). Environmental impact assessment Dakpai-Buli road. Zhemgang, Bhutan: ISDP.
- Johnsingh, A. J. T., & Joshua, J. (1989). The threatened gallery forest of the river Tambiraparani, Mundanthurai Wildlife Sanctuary, south India. *Biological Conservation*, 47(4), 273-280. doi:[https://doi.org/10.1016/0006-3207\(89\)90070-0](https://doi.org/10.1016/0006-3207(89)90070-0)
- Josefsson, J, Hiron, M, Arlt, D., . . . Pärt, T. (2020). Improving scientific rigour in conservation evaluations and a plea deal for transparency on potential biases. *Conservation Letters*, 13:e12726. doi:[doi:10.1111/conl.12726](https://doi.org/10.1111/conl.12726)
- Joshi, N., Srivastava, A., & Joshi, R. (2018). Impact of transportation on mammalian fauna of Rajaji Tiger Reserve, India. *Asian Journal of Conservation Biology*, 7, 73-77.
- Joshi, R., & Dixit, A. (2012). Wildlife mortality on national highway 72 and 74 across the Rajaji National Park and the Haridwar Conservation Area, north India. *International Journal of Conservation Science*, 3, 127-139.
- Kadikon, S., Skudai, U., & Johor, J. (2020). The Bakun Hydro Electrical Project (HEP), Sarawak, Malaysia: The manifestation of Islamic system between environment and development.
- Kaplin, B. A., & Moermond, T. C. (2000). Foraging ecology of the mountain monkey (*Cercopithecus lhoesti*): Implications for its evolutionary history and use of disturbed forest. *American Journal of Primatology*, 50(4), 227-246. doi:10.1002/(SICI)1098-2345(200004)50:4<227::AID-AJP1>3.0.CO;2-S
- Kasmuri, N., Nazar, N., & Yazid, A. (2020). Human and animals conflicts: A case study of wildlife roadkill in Malaysia. *Environment-Behaviour Proceedings Journal*, 5 doi:10.21834/e-bpj.v5i13.2093
- Katsis, L., Cunneyworth, P. M. K., Turner, K. M. E., & Presotto, A. (2018). Spatial patterns of primate electrocutions in Diani, Kenya. *International Journal of Primatology*, 39(4), 493-510. doi:10.1007/s10764-018-0046-6
- Khamcha, D., Powell, L. A., & Gale, G. A. (2018). Effects of roadside edge on nest predators and nest survival of Asian tropical forest birds. *Global Ecology and Conservation*, 16, e00450. doi:10.1016/j.gecco.2018.e00450

- Kioko, J., Kiffner, C., Phillips, P., Patterson-Abrolat, C., Collinson, W., & Katers, S. (2015). Driver knowledge and attitudes on animal vehicle collisions in northern Tanzania. *Tropical Conservation Science*, 8(2), 352-366. doi:10.1177/194008291500800206
- Knight, A. (2014). The genetic structure and dispersal patterns of the Nigeria-Cameroon chimpanzee (*Pan troglodytes ellioti*).
- Koffi, J., Bitty, E., Bohoussou, K., Abedi-Lartey, M., Gamys, J., & Soribah, P. (2013). Current conservation status of large mammals in Sime Darby oil palm concession in Liberia. *Global Journal of Biology, Agriculture and Health Sciences*, 2(3), 2319 – 5584.
- Kormos, R., Kormos, C. F., Humle, T., Lanjouw, A., Rainer, H., Victorine, R., . . . Williamson, E. A. (2014). Great apes and biodiversity offset projects in Africa: The case for national offset strategies. *Plos One*, 9(11), e111671. doi:10.1371/journal.pone.0111671
- Krief, S., Iglesias-González, A., Appenzeller, B. M. R., Okimat, J. P., Fini, J., Demeneix, B., . . . Spirhanzlova, P. (2020). Road impact in a protected area with rich biodiversity: The case of the Sebitoli road in Kibale National Park, Uganda. *Environmental Science and Pollution Research*, 27(22), 27914-27925. doi:10.1007/s11356-020-09098-0
- Kumar, A., Singh, M., Anandam, M., Ahuja, V., Kumara, H. N., & Molur, S. (2020). *Semnopithecus ajax*. The IUCN Red List of Threatened Species, doi:10.2305/IUCN.UK.2020-2.RLTS.T39833A17943210.en.
- Kumar, C. A. (2012). Antecedents of locomotor disorders in wild animals and its impact - an insight. *Intas Polivet*, 13(2), 170-178.
- Kumar, A., Sarma, K., Krishna, M., & Devi, A. (2013). The eastern hoolock gibbon (*Hoolock leuconedys*) in eastern Arunachala Pradesh, India. *Primate Conservation*, 2013(27), 115-123. doi:10.1896/052.027.0106
- Kumar, A., Sarma, K., Panvor, J., Mazumdar, K., Devi, A., Krishna, M., & Ray, P. (2014). Threats to the Bengal slow loris *Nycticebus bengalensis* in and around Itanagar Wildlife Sanctuary, Arunachala Pradesh, India: Impediments to conservation. *Endangered Species Research*, 23, 99-106. doi:10.3354/esr00540
- Kumar, S., Khatavkar, P., Dev, P., Yadav, U. V. S., & Shinde, A. (2018). Modelling the impact of highways on the impedance of movement and mortality locations of wildlife: A case study of the NH6 in Maharashtra, India. In N. L. Sarda, P. S. Acharya & S. Sen (Eds.), *Geospatial infrastructure, applications and technologies: India case studies* (pp. 349-363). Singapore: Springer Singapore. doi:10.1007/978-981-13-2330-0_26
- Kumar, V., & Kumar, V. (2015). Seasonal electrocution fatalities in free-range rhesus macaques (*Macaca mulatta*) of Shivalik Hills area in northern India. *Journal of Medical Primatology*, 44(3), 137-142. doi:10.1111/jmp.12168
- Kumara, H. N., Sharma, A. K., Kumar, A., & Singh, M. (2000). Roadkill of wild fauna in Indira Gandhi Wildlife Sanctuary, Western Ghats, India: Implications for management. *Biosphere Conservation: For Nature, Wildlife, and Humans*, 3(1), 41-47. doi:10.20798/biospherecons.3.1_41
- L, P., Nijman, V., & Nekaris, K. A. (2008). When there is no forest left: Fragmentation, local extinction, and small population sizes in the Sri Lankan western purple-faced langur. *Endangered Species Research*, 5, 29-36. doi:10.3354/esr00107
- Lakshminarayanan, N., & Raj, M. K. (2015). National highway through Sathyamangalam Wildlife Sanctuary is a death trap for animals: Locations suggested for speed control to reduce wildlife road kills. *Conservation India*.
- Langridge, J., Sordello, R. & Reyjol, Y. (2020) Outcomes of wildlife translocations in protected areas: what is the type and extent of existing evidence? A systematic map protocol. *Environ Evid*, 9, 16. doi:10.1186/s13750-020-00199-4

- Laurance, W. F., Croes, B. M., Tchignoumba, L., Lahm, S. A., Alonso, A., Lee, M. E., . . . Ondzeano, C. (2006). Impacts of roads and hunting on central African rainforest mammals. *Conservation Biology*, 20(4), 1251-1261. doi:10.1111/j.1523-1739.2006.00420.x
- Laurance, W. F., Wich, S. A., Onrizal, O., Fredriksson, G., Usher, G., Santika, T., . . . Meijaard, E. (2020). Tapanuli orangutan endangered by Sumatran hydropower scheme. *Nature Ecology & Evolution*, doi:10.1038/s41559-020-1263-x
- Lawes, M. J. (1990). The socioecology of the samango monkey (*Cercopithecus mitis erythrarchus*) in Natal. University of Natal.
- Li, Z., Liu, Z., Wei, Y., Rogers, E., & Hu, G. (2003). Population status of white-headed langur (*Trachypithecus leucocephalus*) in Guangxi, China. *Tigerpaper*, 30(2), 21-23.
- Li, B., Ren, B., & Gao, Y. (1999). A change in the summer home range of Sichuan snub-nosed monkeys in Yuhuangmiao, QinLing Mountains. *Folia Primatologica*, 70(5), 269-273. doi:10.1159/000021706
- Li, B., He, P., Yang, X., Wei, W., Ren, B., Yang, J., . . . Liu, Y. (2001). The present status of the Sichuan snub-nosed monkey in the QinLing Mountains of China, and a proposed conservation strategy for the species. *Biosphere Conservation: For Nature, Wildlife, and Humans*, 3(2), 107-114. doi:10.20798/biospherecons.3.2_107
- Li, L., Wu, G., Xue, Y., He, Y., & Giraudoux, P. (2011). Habitat and connectivity of the black snub-nosed monkey (*Rhinopithecus bieti*) populations in Yunnan: A climate change scenario. Paris, France.
- Li, L., Xue, Y., Wu, G., Li, D., & Giraudoux, P. (2015). Potential habitat corridors and restoration areas for the black-and-white snub-nosed monkey *Rhinopithecus bieti* in Yunnan, China. *Oryx*, 49(4), 719-726. doi:10.1017/S0030605313001397
- Li, Y., Tie, J., Peng, L., Zhang, J., Chen, B., & Zhang, Z. (2011). GIS-based seasonal pattern of *Rhinopithecus roxellana*'s habitat selection in Shennongjia Reserve, central China. *Acta Ecologica Sinica*, 31(2), 84-90. doi:doi.org/10.1016/j.chnaes.2010.11.010
- Li, Y., Huang, C., Ding, P., Tang, Z., & Wood, C. (2007). Dramatic decline of François' langur *Trachypithecus francoisi* in Guangxi province, China. *Oryx*, 41(1), 38-43. doi:10.1017/S0030605307001500
- Linden, B., Foord, S., Horta-Lacueva, Q. J. B., & Taylor, P. J. (2020). Bridging the gap: How to design canopy bridges for arboreal guenons to mitigate road collisions. *Biological Conservation*, 246, 108560. doi:10.1016/j.biocon.2020.108560
- Liu, Z., Ren, B., Wu, R., Zhao, L., Hao, Y., Wang, B., . . . LI, M. (2009). The effect of landscape features on population genetic structure in Yunnan snub-nosed monkeys (*Rhinopithecus bieti*) implies an anthropogenic genetic discontinuity. *Molecular Ecology*, 18(18), 3831-3846. doi:10.1111/j.1365-294X.2009.04330.x
- Loken, B., Spehar, S., & Rayadin, Y. (2013). Terrestriality in the Bornean orangutan (*Pongo pygmaeus morio*) and implications for their ecology and conservation. *American Journal of Primatology*, 75(11), 1129-1138. doi:10.1002/ajp.22174
- Lucas, P., Alves-Eigenheer, M., Francisco, T., Dietz, J., & Ruiz-Miranda, C. (2019). Spatial response to linear infrastructures by the endangered golden lion tamarin. *Diversity*, 11, 100. doi:10.3390/d11070100
- Luisa, X. L., Cambará, P. R., Juliane Nunes, H. C., & Buss, G. (2007). Power lines and howler monkey conservation in Porto Alegre, Rio Grande do Sul, Brazil. *Neotropical Primates*, 14(2), 76-80. doi:10.1896/044.014.0206
- Luo, Z., Yu, H., Pu, Y., Yang, J., Mei, H., Wang, D., . . . Wu, H. (2016). Assessment of habitat fragmentation and corridors for an isolated subspecies of the Sichuan golden snub-nosed monkey, *Rhinopithecus roxellana hubeiensis*. *International Journal of Primatology*, 37(3), 438-459. doi:10.1007/s10764-016-9910-4

- Ma, C., Luo, Z., Liu, C., Orkin, J. D., Xiao, W., & Fan, P. (2015). Population and conservation status of Indochinese grey langurs (*Trachypithecus crepusculus*) in the Wuliang Mountains, Jingdong, Yunnan, China. *International Journal of Primatology*, 36(4), 749-763. doi:10.1007/s10764-015-9852-2
- MacCarthy, J. (2018). Effects of hunting and human disturbance on wildlife near villages in north-eastern Gabon.
- Marques, E. L. N., Jerusalinsky, L., Rocha, J. C. A. G., Santos, P. M., Beltrão-Mendes, R., & Ferrari, S. F. (2013). Primates, Pitheciidae, *Callicebus coimbrai kobayashi* and *langguth*, 1999: New localities for an endangered titi monkey in eastern Sergipe, Brazil. *Checklist*, 9(3), 696-699. doi:10.15560/9.3.696
- Marshall, A. R. (2008). Ecological report on Mogombera forest. Dar es Salaam, Tanzania: WWF Tanzania.
- Martinez, J., & Wallace, R. B. (2007). Further notes on the distribution of endemic Bolivian titi monkeys, *Callicebus modestus* and *Callicebus olallae*. *Neotropical Primates*, 14(2), 47-54. doi:10.1896/044.014.0201
- Manfredo, M.J., Bruskotter, J.T., Teel, T.L., Fulton, D., Schwartz, S.H., Arlinghaus, R., Oishi, S., Uskul, A.K., Redford, K., Kitayama, S. and Sullivan, L. (2017). Why social values cannot be changed for the sake of conservation. *Conservation Biology*, 31: 772-780. doi:10.1111/cobi.12855
- Mass, V., Rakotomanga, B., Rakotondratsimba, G., Razafindramisa, S., Andrianaivomahefa, P., Dickinson, S., . . . Cooke, A. (2011). Lemur bridges provide crossing structures over roads within a forested mining concession near Moramanga, Toamasina province, Madagascar. *Conservation Evidence*, 8, 11-18.
- Massawe, E. T. (1992). Assessment of the status of chimpanzee populations in western Tanzania. *African Study Monographs*, 13(1), 35-55.
- Matthews, A., & Matthews, A. (2004). Survey of gorillas (*Gorilla gorilla gorilla*) and chimpanzees (*Pan troglodytes troglodytes*) in southwestern Cameroon. *Primates*, 45(1), 15-24. doi:10.1007/s10329-003-0058-4
- McKenzie-Mohr, D. (2013). Fostering sustainable behavior: an introduction to community-based social marketing. New Society Publishers, British Columbia, Canada.
- McLennan, M. R., & Asiimwe, C. (2016). Cars kill chimpanzees: Case report of a wild chimpanzee killed on a road at Bulindi, Uganda. *Primates*, 57(3), 377-388. doi:10.1007/s10329-016-0528-0
- Medhi, R., Chetry, D., Bhattacharjee, P. C., & Patiri, B. N. (2004). Status of *Trachypithecus geei* in a rubber plantation in western Assam, India. *International Journal of Primatology*, 25(6), 1331-1337. doi:10.1023/B:IJOP.0000043965.38722.63
- Mendez-Carvajal, P., Ruiz-Bernard, I., León, G., González, Y., Miranda, E., Loría, L. I., . . . Soto, E. (2013). Activities towards primate conservation in panama. *Wildlife Biology in Practice*, 9, 91-97. doi:10.2461/wbp.2013.9.10
- Menon, V., Tiwari, S. K., Ramkumar, K., Rathnakumar, S., Ramith, K., Bodhankar, S., & Deb, K. (n.d.). Staying connected: Addressing the impacts of linear intrusions on wildlife in the Western Ghats. Noida, Uttar Pradesh: Wildlife Trust of India.
- Meyer, D., Momberg, F., Mataushek, C., Oswald, P., Lwin, N., Aung, S. S., . . . Roos, C. (2017). Conservation status of the Myanmar or black snub-nosed monkey *Rhinopithecus strykeri*. Yangon, Myanmar; Dali, China; Göttingen, Germany: Fauna & Flora International; Institute of Eastern-Himalaya Biodiversity Research; German Primate Centre.
- Meza-Joya, F. L., Pallares, E. R., & Ramirez, D. M. C. (2018). Assessing roadkill events to reduce wildlife mortality in roads of the mid-Magdalena Valley, Colombia. London, UK: Rufford Foundation.
- Mireri, C., Onjala, J., & Ouge, N. (2008). The economic valuation of the proposed Tana Integrated Sugar Project (TISP), Kenya. Sandy, UK: RSPB.

- Momberg, F., Lwin, N., & Geissmann, T. (2010). Report on a snub-nosed monkey and biodiversity survey, maw river catchment, northeast Kachin state 24 April – 8 May 2010. Yangon, Myanmar: Myanmar Primate Conservation Program.
- Moore, R. S., Wihermanto, & Nekaris, K. A. I. (2014). Compassionate conservation, rehabilitation and translocation of Indonesian slow lorises. *Endang. Species Res*, 26(2), 93-102.
- Moraes, A. M., Ruiz-Miranda, C. R., Galetti Jr., P. M., Niebuhr, B. B., Alexandre, B. R., Muylaert, R. L., . . . Ribeiro, M. C. (2018). Landscape resistance influences effective dispersal of endangered golden lion tamarins within the Atlantic forest. *Biological Conservation*, 224, 178-187. doi:10.1016/j.biocon.2018.05.023
- Morgan, D., Mundry, R., Sanz, C., Ayina, C. E., Strindberg, S., Lonsdorf, E., & Kühl, H. S. (2018). African apes coexisting with logging: Comparing chimpanzee (*Pan troglodytes troglodytes*) and gorilla (*Gorilla gorilla gorilla*) resource needs and responses to forestry activities. *Biological Conservation*, 218, 277-286. doi:10.1016/j.biocon.2017.10.026
- Morgan, D., Strindberg, S., Winston, W., Stephens, C. R., Traub, C., Ayina, C. E., . . . Sanz, C. M. (2019). Impacts of selective logging and associated anthropogenic disturbance on intact forest landscapes and apes of northern Congo. *Frontiers in Forests and Global Change*, 2, 28.
- Morino, M., & Koike, F. (2006). Assessing the risk of economic damage to crops caused by Japanese macaques on Yakushima Island. *Japanese Journal of Conservation Ecology*, 11, 43-52. doi:10.18960/hozen.11.1_43
- Morrow, K. S., Glanz, H., Ngakan, P. O., & Riley, E. P. (2019). Interactions with humans are jointly influenced by life history stage and social network factors and reduce group cohesion in moor macaques (*Macaca maura*). *Scientific Reports*, 9(1), 20162. doi:10.1038/s41598-019-56288-z
- Motsch, P., Le Flohic, G., Dilger, C., Delahaye, A., Chateau-Smith, C., & Couette, S. (2015). Degree of terrestrial activity of the elusive sun-tailed monkey (*Cercopithecus solatus*) in Gabon: Comparative study of behavior and postcranial morphometric data. *American Journal of Primatology*, 77(10), 1060-1074. doi:10.1002/ajp.22441
- Murai, M., Ruffler, H., Berlemont, A., Campbell, G., Esono, F., Agbor, A., . . . Kühl, H. S. (2013). Priority areas for large mammal conservation in equatorial guinea. *Plos One*, 8(9), e75024. doi:10.1371/journal.pone.0075024
- Mwebi, O., Nguta, E., Onduso, V., Nyakundi, B., Jiang, X.L. (2019). Small mammal diversity of Mt. Kenya based on carnivore fecal, and surface bone remains. *Zoological Research*, 40(2017-068), 61. doi:10.24272/j.issn.2095-8137.2018.055
- Nadler, T. (2012). Frankfurt zoological society: "Vietnam primate conservation program" and the endangered Primate Rescue Centre, Vietnam - report 2011. *Vietnamese Journal of Primatology*, 2(1), 85-94.
- Nagendra, H., Mundoli, S., & Nishant, V. (n.d.). Report on environmental and ecological impacts of tree felling for proposed steel flyover on Bellary road and road widening of Jayamahall main road, Bengaluru.
- Naher, H., Shawkat, I. K., & Ahmed, T. (1970). Threats and conservation problems of non-human primates in moist deciduous forest of Bangladesh. *Journal of the Asiatic Society of Bangladesh, Science*, 43(1) doi:10.3329/jasbs.v43i1.46240
- Nayara, N. R., & Romari, A. M. (2014). Wildlife in our backyard: Interactions between Wied's marmoset *Callithrix kuhlii* (primates: Callithrichidae) and residents of Ilhéus, Bahia, Brazil. *Wildlife Biology*, 20(2), 91-96. doi:10.2981/wlb.13057
- Nekaris, K. A., & Jayawardene, J. (2003). Pilot study and conservation status of the slender loris (*Loris tardigradus* and *Loris lydekkerianus*) in Sri Lanka. *Primate Conservation*, 19, 83-90.
- Nekaris, K. A. I., & Jayawardene, J. (2004). Survey of the slender loris (primates, Lorisidae Gray, 1821: *Loris tardigradus linnaeus*, 1758 and *Loris lydekkerianus cabrera*, 1908) in Sri Lanka. *Journal of Zoology*, 262(4), 327-338. doi:10.1017/S0952836903004710

- Nguyen, M. H. (2006). Some observations on the hatinh langur, *Trachypithecus laotum hatinhensis*, in north central Vietnam. *Primate Conservation*, 2006(21), 149-154. doi:10.1896/0898-6207.21.1.149
- Njuguna, S. G. (1995). Conservation and management of wetland biodiversity in the Tana River Delta, Kenya. Nairobi, Kenya: IUCN.
- Nowak, K., Hill, R., Wimberger, K., & le Roux, A. (2016). Risk-taking in samango monkeys in relation to humans at two sites in South Africa. (pp. 301-314) doi:10.1007/978-3-319-30469-4_17
- Oddone Aquino, A. G. H. E., & Nkomo, S.L. (2021). Spatio-Temporal Patterns and Consequences of Road Kills: A Review. *Animals* 11:799. doi:10.3390/ani11030799.
- Olgun, H., Mohammed, M. K., Mzee, A. J., Green, M. E. L., Davenport, T. R. B., & Georgiev, A. V. (2020). The impact and implications of vehicle collisions on the endangered and endemic Zanzibar red colobus (*Piliocolobus kirkii*). *Biorxiv*. doi:10.1101/2020.01.17.906909
- Padua, C., Jr, L., & Padua, S. (1995). A pole bridge to avoid primates road kills. *Neotropical Primates*, 3, 13.
- Palminteri, S. (2010). Determinants of primate distribution and abundance in south-western Amazonia, with a focus on bald-faced saki monkeys (*Pithecia irrorata*).
- Pan, H., Liu, J., Liu, N., Zhang, X., Li, R., & Hu, G. (2013). Roadside housing disturbances with trachypithecus francoisi at the Mayanghe Nature Reserve, Guizhou province. *Journal of Zhejiang A&F University*, 30(30-6-24), 960. doi:10.11833/j.issn.2095-0756.2013.06.024
- Panagoda, P. A. B. G., & Weerasinghe, V. P. A. (2019). A potential habitat corridor for western purple-faced langur between forest reserves in Sri Lanka: GIS as a tool in connectivity modelling. *Acta Ecologica Sinica*, 39(3), 194-201. doi:https://doi.org/10.1016/j.chnaes.2018.12.007
- Papworth, S. (2016). Indigenous peoples, primates, and conservation evidence: A case study focussing on the Waorani of the Maxus road. In M. T. Waller (Ed.), *Ethnoprimatology: Primate conservation in the 21st century* (pp. 95-115). Cham: Springer International Publishing. doi:10.1007/978-3-319-30469-4_6
- Payan, E., Soto, C., Diaz-Pulido, A., Benitez, A., & Hernandez, A. (2013). Wildlife road crossing mortality: Lessons for wildlife friendly road design in Colombia. Paper presented at the Conference: International Conference on Ecology and Transportation
- Peck, M., Thorn, J., Mariscal, A., Baird, A., Tirira, D., & Kniveton, D. (2011). Focusing conservation efforts for the critically endangered brown-headed spider monkey (*Ateles fusciceps*) using remote sensing, modelling, and playback survey methods. *International Journal of Primatology*, 32(1), 134-148. doi:10.1007/s10764-010-9445-z
- Peres, C. A. (1991). Humboldt's woolly monkeys decimated by hunting in Amazonia. *Oryx*, 25(2), 89-95. doi:10.1017/S0030605300035122
- Phalan, B., Hayes, G., Brooks, S., Marsh, D., Howard, P., Costelloe, B., . . . Whitaker, S. (2018). Avoiding impacts on biodiversity through strengthening the first stage of the mitigation hierarchy. *Oryx*, 52(2), 316-324. doi:10.1017/S0030605316001034
- Pliosungnoen, M., Gale, G., & Savini, T. (2010). Density and microhabitat use of Bengal slow loris in primary forest and non-native plantation forest. *American Journal of Primatology*, 72(12), 1108-1117. doi:10.1002/ajp.20875
- Pozo-Montuy, G., Serio-Silva, J., & Bonilla-Sánchez, Y. M. (2011). Influence of the landscape matrix on the abundance of arboreal primates in fragmented landscapes. *Primates*, 52(2), 139-147. doi:10.1007/s10329-010-0231-5

- Pozo-Montuy, G., Serio-Silva, J., Chapman, C. A., & Bonilla-Sánchez, Y. M. (2013). Resource use in a landscape matrix by an arboreal primate: Evidence of supplementation in black howlers (*Alouatta pigra*). *International Journal of Primatology*, 34(4), 714-731. doi:10.1007/s10764-013-9691-y
- Pragatheesh, A. (2011). Effect of human feeding on the road mortality of rhesus macaques on national highway-7 routed along Pench Tiger reserve, Madhya Pradesh, India. *Journal of Threatened Taxa*, 3, 1656–1662. doi:10.11609/JoTT.o2669.1656-62
- Prayogo, H., Thohari, A., Dedy, D., Sugardjito, J., & Prasetyo, L. (2014). Habitat suitability modelling of Bornean orangutan (*Pongo pygmaeus pygmaeus*) in Betung Kerihun National park, Danau Sentarum and corridor, west Kalimantan. *Jurnal Manajemen Hutan Tropika*, 20 doi:10.7226/jtfm.20.2.112
- Printes, R. (1999). The Lami Biological Reserve, Rio Grande do Sul, Brazil and the danger of power lines to howlers in urban reserves. *Neotropical Primates*, 4, 135-136.
- Printes, R. C., Buss, G., Márcia M. de A. Jardim, Marcos de S. Fialho, Sidnei da S. Dornelles, Perotto, M., . . . Romanowski, H. P. (2010). The urban monkeys program: A survey of *Alouatta clamitans* in the south of Porto Alegre and its influence on land use policy between 1997 and 2007. *Primate Conservation*, 2010(25), 11-19. doi:10.1896/052.025.0103
- Printes, R. C., Rylands, A. B., & Bicca-Marques, J. C. (2011). Distribution and status of the critically endangered blond titi monkey *Callicebus barbarabrownae* of north-east Brazil. *Oryx*, 45(3), 439-443. doi:10.1017/S0030605311000111
- Printes, R., Buss, G., Azevedo, R., Ravetta, A., & Silva, G. (2018). Update on the geographic distributions of two titi monkeys, *Plecturocebus hoffmannsi* (Thomas, 1908) and *P. baptista* (Lönnerberg, 1939), in two protected areas in the Brazilian Amazon. *Primate Conservation*, 32, 1-8.
- Puig-Lagunes, Á. A., Canales-Espinosa, D., Rangel-Negrín, A., & Dias, P. A. D. (2016). The influence of spatial attributes on fragment occupancy and population structure in the Mexican mantled howler (*Alouatta palliata mexicana*). *International Journal of Primatology*, 37(6), 656-670. doi:10.1007/s10764-016-9930-0
- Qi, D., Zhou, P., Li, X., Li, F., Tang, L., & Zhao, J. (2019). Study on sleeping sites selection of *Macaca mulatta* at Lu Mountain, Sichuan province. *IOP Conference Series: Materials Science and Engineering*, 677, 032015. doi:10.1088/1757-899X/677/3/032015
- Qin, W., Jiang, M., Wang, Z., & Liu, L. (2005). Function zone readjustment of and its ecological impact on Henan Taihangshan *Macaca mulatta chinensis* National Nature Reserve. *Rural Eco-Environment*, 21, 78-80.
- Quéméré, E., Louis, E. E., Ribéron, A., Chikhi, L., & Crouau-Roy, B. (2010). Non-invasive conservation genetics of the critically endangered golden-crowned sifaka (*Propithecus tattersalli*): High diversity and significant genetic differentiation over a small range. *Conservation Genetics*, 11(3), 675-687. doi:10.1007/s10592-009-9837-9
- Rabanal, L., Kuehl, H., Mundry, R., Robbins, M., & Boesch, C. (2010). Oil prospecting and its impact on large rainforest mammals in Loango National Park, Gabon. *Biological Conservation*, 143(4), 1017-1024. doi:10.1016/j.biocon.2010.01.017
- Raboy, B. E., Neves, L. G., Zeigler, S., Saraiva, N. A., Cardoso, N., dos Santos, G. R., . . . Leimgruber, P. (2010). Strength of habitat and landscape metrics in predicting golden-headed lion tamarin presence or absence in forest patches in southern Bahia, Brazil. *Biotropica*, 42(3), 388-397. doi:10.1111/j.1744-7429.2009.00595.x
- Radespiel, U., Rakotondravony, R., & Chikhi, L. (2008). Natural and anthropogenic determinants of genetic structure in the largest remaining population of the endangered golden-brown mouse lemur, *Microcebus ravelobensis*. *American Journal of Primatology*, 70(9), 860-870. doi:10.1002/ajp.20574
- Radhakrishna, S., Goswami, A. B., & Sinha, A. (2006). Distribution and conservation of *Nycticebus bengalensis* in north-eastern India. *International Journal of Primatology*, 27(4), 971-982. doi:10.1007/s10764-006-9057-9

- Rajvanshi, A., Mathur, V., Teleki, G., & Mukherjee, S. (2001). Roads, sensitive habitats and wildlife roads, sensitive habitats and wildlife environmental guideline for India and south Asia. Dehradun, India: Wildlife Institute of India.
- Ram, C., Sharma, G., & Rajpurohit, L. S. (2015). Mortality and threats to hanuman langurs (*Semnopithecus entellus entellus*) in and around Jodhpur (Rajasthan). *The Indian Forester*, 141, 1042-1045.
- Rangel-Negrín, A., Coyohua-Fuentes, A., Chavira, R., Canales-Espinosa, D., & Dias, P. A. D. (2014). Primates living outside protected habitats are more stressed: The case of black howler monkeys in the Yucatan Peninsula. *Plos One*, 9(11), e112329. doi:10.1371/journal.pone.0112329
- Ravetta, A. L., & Ferrari, S. F. (2009). Geographic distribution and population characteristics of the endangered white-fronted spider monkey (*Ateles marginatus*) on the lower Tapajos river in central Brazilian Amazonia. *Primates*, 50(3), 261. doi:10.1007/s10329-009-0146-1
- Rawson, B. M., Insua-Cao, P., Nguyen, M. H., Van Ngoc, T., Hoang Minh, D., Mahood, S., . . . Roos, C. (2011). The conservation status of gibbons in Vietnam. Hanoi, Vietnam: Fauna & Flora International/Conservation International.
- Ray, P. C., Kumar, A., Devi, A., Krishna, M. C., Khan, M. L., & Brockelman, W. Y. (2015). Habitat characteristics and their effects on the density of groups of western hoolock gibbon (hoolock hoolock) in Namdapha National Park, Arunachala Pradesh, India. *International Journal of Primatology*, 36(3), 445-459. doi:10.1007/s10764-015-9834-4
- Remis, M. J. (2000). Preliminary assessment of the impacts of human activities on gorillas *Gorilla gorilla gorilla* and other wildlife at Dzanga-Sangha reserve, Central African Republic. *Oryx*, 34(1), 56-65. doi:10.1046/j.1365-3008.2000.00091.x
- Ren, G., Yang, Y., He, X., Li, G., Gao, Y., Huang, Z., . . . Xiao, W. (2017). Habitat evaluation and conservation framework of the newly discovered and critically endangered black snub-nosed monkey. *Biological Conservation*, 209, 273-279. doi:https://doi.org/10.1016/j.biocon.2017.02.029
- Riley Koenig, C., Jayasri, S., & Gumert, M. (2015). Results of a nationwide census of the long-tailed macaque (*Macaca fascicularis*) population of Singapore. *The Raffles Bulletin of Zoology*, 63, 503-515.
- Robertson, J. M. Y., & van Schaik, C. P. (2001). Casual factors underlying the dramatic decline of the sumatran orang-utan. *Oryx*, 35(1), 26-38. doi:10.1046/j.1365-3008.2001.00149.x
- Rodgers, W. A., & Homewood, K. M. (1982). Biological values and conservation prospects for the forests and primate populations of the Uzungwa Mountains, Tanzania. *Biological Conservation*, 24(4), 285-304. doi:10.1016/0006-3207(82)90016-7
- Rodgers, W. A., Homewood, K. M., & Hall, J. B. (1980). The railway and a rare colobus monkey. *Oryx*, 15(5), 491-495. doi:10.1017/S0030605300029215
- Rodrigues A., Pilgrim, J., Lamoureux, J., Hoffmann, M., Brooks, T. (2006). The value of the IUCN Red List for conservation. *Trends in Ecology & Evolution*, 21(2), 71-76. doi:10.1016/j.tree.2005.10.010
- Rogers, J., & Hennessey, B. (2008). A study of the bushmeat trade in Ouessou, Republic of Congo. *Conservation and Society*, 6(2), 179-184. doi:10.4103/0972-4923.49211
- Roscoe, C. J., Silva, M. A. d., Hapuarachchi, N. C., & PA, R. K. (2013). A new colour morph of the southern purple-faced langur (*Semnopithecus vetulus vetulus*) from the rainforests of Southwestern Sri Lanka. *Primate Conservation*, 26(1), 115-124. doi:10.1896/052.026.0110
- Ross, C., Srivastava, A., & Pirta, R. S. (1993). Human influences on the population density of hanuman langurs *Presbytis entellus* and rhesus macaques *Macaca mulatta* in Shimla, India. *Biological Conservation*, 65(2), 159-163. doi:10.1016/0006-3207(93)90445-7

- Rossi, M. J., de Oliveira Feroseli, André Fernando, Hirano, Z. M. B., & dos Santos, W. F. (2020). Adoption of an orphaned and temporarily captive infant by an unrelated adult female in black-and-gold howler monkey: Implications for management strategies. *Primates*, 61(2), 169-174. doi:10.1007/s10329-019-00779-0
- Rudran, R. (2007). A survey of Sri Lanka's endangered and endemic western purple-faced langur (*Trachypithecus vetulus nestor*). *Primate Conservation*, 22(1), 139-144. doi:10.1896/052.022.0115
- Sadleir, R. M. F. S., & Linklater, W. L. (2016). Annual and seasonal patterns in wildlife road-kill and their relationship with traffic density. *New Zealand Journal of Zoology*, 43(3), 275-291. doi:10.1080/03014223.2016.1155465
- Sánchez, L.E., & Gallardo, A.L.C.F. (2005) On the successful implementation of mitigation measures. *Impact Assessment and Project Appraisal*, 23:3, 182-190. doi:10.3152/147154605781765472
- Sakura, O. (1994). Factors affecting party size and composition of chimpanzees (*Pan troglodytes verus*) Bossou, Guinea. *International Journal of Primatology*, 15(2), 167-183. doi:10.1007/BF02735272
- Scally, A., Dutheil, J. Y., Hillier, L. W., Jordan, G. E., Goodhead, I., Herrero, J., . . . Durbin, R. (2012). Insights into hominid evolution from the gorilla genome sequence. *Nature*, 483(7388), 169-175. doi:10.1038/nature10842
- Selvan, M. (2011). Observation of road kills on Kambam-Kumily road (NH 220) in Tamil Nadu. *Zoos' Print Journal*, 27(3) doi:10.11609/zp.v26i3.1749
- Selvan, M. (2012). Roadkill animals on national highways of Karnataka, India. *Journal of Ecology and the Natural Environment*, 4, 363-365. doi:10.5897/JENE11.068
- Sengar, A., Shrivastav, A. B., Rokde, A., & Singh, S. (2014). Electrocutation management in a langur (*Semnopithecus entellus*). *Journal of Wildlife Ecology*, 2(1), 7-8.
- Sengupta, A., McConkey, K. R., & Radhakrishna, S. (2015). Primates, provisioning and plants: Impacts of human cultural behaviours on primate ecological functions. *Plos One*, 10(11), e0140961. doi:10.1371/journal.pone.0140961
- Setiawan, A., Simanjuntak, C., Saumanuk, I., Tateburuk, D., Dinata, Y., Liswanto, D., & Rafiastato, A. (2020). Distribution survey of Kloss's gibbons (*Hylobates klossii*) in Mentawai Islands, Indonesia. *Biodiversitas Journal of Biological Diversity*, 21 doi:10.13057/biodiv/d210551
- Sha, J. C. M., Gumert, M. D., Lee, B. P. Y. -, Fuentes, A., Rajathurai, S., Chan, S., & Jones-Engel, L. (2009). Status of the long-tailed macaque *Macaca fascicularis* in Singapore and implications for management. *Biodiversity and Conservation*, 18(11), 2909-2926. doi:10.1007/s10531-009-9616-4
- Shanee, S. (2011). Distribution survey and threat assessment of the yellow-tailed woolly monkey (*Oreonax flavicauda*; Humboldt 1812), north-eastern Peru. *International Journal of Primatology*, 32(3), 691-707. doi:10.1007/s10764-011-9495-x
- Shanee, S., Allgas, N., Shanee, N., & Campbell, N. (2015). Distribution survey, ecological niche modelling and conservation assessment of the Peruvian night monkey: *Aotus miconax* Thomas, 1927 (mammalia: Primates: Aotidae) in north-eastern Peru, with notes on the distributions of *Aotus* spp. Gray, 1870. *Journal of Threatened Taxa*, 7(3), 6947-6964. doi:10.11609/JoTT.o4184.6947-64
- Sharma, N. (2019). Wildlife under wheels. Retrieved 21/07/2020 from <http://blog.ncf-india.org/2009/09/29/wildlife-under-wheels/>
- Sharma, R. C. (2013). Mitigation of impact of national highway-58 on Indian primate, hanuman langur (*Presbytis entellus*) in Uttarakhand Himalayas. Paper presented at the 2013 International Conference on Ecology and Transportation (ICOET 2013),

- Silva, F. E., Endo, W., de Sousa e Silva Júnior, José, dos Santos Junior, Marcelo A., Sampaio, R., & Röhe, F. (2018). New insights into the distribution and conservation status of the golden-white tassel-ear marmoset *Mico chrysoleucos* (primates, Callithrichidae). *Primates*, 59(4), 347-353. doi:10.1007/s10329-018-0665-8
- Sinclair, E. M. (2017). Population assessment of monkeys in an area of increasing hunting pressure on Bioko Island, Equatorial Guinea.
- Singh, M., Udhayan, A., Kumar, M. A., Kumara, H. N., & Lindburg, D. G. (1999). Status survey of slender loris *Loris tardigradus lydekkerianus* in Dindigul, Tamil Nadu, India. *Oryx*, 33(1), 30-36. doi:10.1046/j.1365-3008.1999.00033.x
- Sloan, S., Campbell, M. J., Alamgir, M., Collier-Baker, E., Nowak, M. G., Usher, G., & Laurance, W. F. (2018). Infrastructure development and contested forest governance threaten the Leuser Ecosystem, Indonesia. *Land Use Policy*, 77, 298-309. doi:10.1016/j.landusepol.2018.05.043
- Sloan, S., Supriatna, J., Campbell, M. J., Alamgir, M., & Laurance, W. F. (2018). Newly discovered orangutan species requires urgent habitat protection. *Current Biology*, 28(11), R650-R651. doi:10.1016/j.cub.2018.04.082
- Smith, A. P., Horning, N., & Moore, D. (1997). Regional biodiversity planning and lemur conservation with GIS in western Madagascar. *Conservation Biology*, 11(2), 498-512. doi:10.1046/j.1523-1739.1997.95283.x
- Stokes, E. J., Strindberg, S., Bakabana, P. C., Elkan, P. W., Iyenguet, F. C., Madzoké, B., . . . Rainey, H. J. (2010). Monitoring great ape and elephant abundance at large spatial scales: Measuring effectiveness of a conservation landscape. *Plos One*, 5(4), e10294. doi:10.1371/journal.pone.0010294
- Strindberg, S., Maisels, F., Williamson, E. A., Blake, S., Stokes, E. J., Aba'a, R., . . . Wilkie, D. S. (2018). Guns, germs, and trees determine density and distribution of gorillas and chimpanzees in western equatorial Africa. *Science Advances*, 4(4), 2964. doi:10.1126/sciadv.aar2964
- Struhsaker, T., & Siex, K. (1996). The Zanzibar red colobus monkey, *Procolobus kirkii*: Conservation status of an endangered island endemic.
- Struhsaker, T. T., & Siex, K. S. (1998). Translocation and introduction of the Zanzibar red colobus monkey: Success and failure with an endangered island endemic. *Oryx*, 32(4), 277-284. doi:10.1046/j.1365-3008.1998.d01-57.x
- Suarez, E., Zapata-Ríos, G., Utreras, V., Strindberg, S., & Vargas, J. (2013). Controlling access to oil roads protects forest cover, but not wildlife communities: A case study from the rainforest of Yasuni Biosphere Reserve (Ecuador). *Animal Conservation*, 16, 265-274. doi:10.1111/j.1469-1795.2012.00592.x
- Supartono, T., Prasetyo, L. B., Hikmat, A., & Kartono, A. P. (2016). Spatial distribution and habitat use of Javan langur (*Presbytis comata*): Case study in district of Kuningan. *Procedia Environmental Sciences*, 33, 340-353. doi:10.1016/j.proenv.2016.03.085
- Supriatna, J., & Mariati, S. (2014). Degradation of primate habitat at Tesso Nilo forest with special emphasis on Riau pale-thighed surili (*Presbytis siamensis cana*). *Journal of Environmental Protection*, 5, 1145-1152. doi:10.4236/jep.2014.512112
- Teixeira, F., Printes, R., Fagundes, J., Alonso, A., & Kindel, A. (2013). Canopy bridges as road overpasses for wildlife in urban fragmented landscapes. *Biota Neotropica*, 13, 117-123. doi:10.1590/S1676-06032013000100013
- Thinley, P., Norbu, T., Rajaratnam, R., Vernes, K., Dhendup, P., Tenzin, J., . . . Dorji, N. (2020). Conservation threats to the endangered golden langur (*Trachypithecus geei*, Khajuria 1956) in Bhutan. *Primates*, 61(2), 257-266. doi:10.1007/s10329-019-00777-2
- Thompson, C. (2016). Agile gibbons agile gibbons (*Hylobates agilis albibarbis*): Vocalisations as an indicator of geographical isolation.

- Thorington Jr., R. W., Ruiz, J. C., & Eisenberg, J. F. (1984). A study of a black howling monkey (*Alouatta caraya*) population in northern Argentina. *American Journal of Primatology*, 6(4), 357-366. doi:10.1002/ajp.1350060405
- Thurber, M. W., Ayarza, P. W., & OEPC. (2005). Canopy bridges along a rainforest pipeline in Ecuador. Paper presented at the SPE Asia Pacific Health, Safety and Environment Conference and Exhibition, 4. doi:10.2118/96504-MS
- Tielen, I. (2016). Status report 2016: Threatened silvery gibbon *Hylobates moloch* groups at Lengkong, West-Java, Indonesia. Balkbrug, Netherlands: Wanicare Foundation.
- Timmins, R. J., & Duckworth, J. W. (1999). Status and conservation of douc langurs (*Pygathrix nemaeus*) in Laos. *International Journal of Primatology*, 20(4), 469-489. doi:10.1023/A:1020382421821
- Traeholt, C., Bunthoeun, R., Rawson, B., Samuth, M., Virak, C., & Vutin, S. (2005). Status review of pileated gibbon, *Hylobates pileatus*, and yellow-cheeked crested gibbon, *Nomascus gabriellae*, in Cambodia. Cambridge, UK: Fauna & Flora International.
- UI Hasan, M. A., & Neha, S. (2018). Group size, composition and conservation challenges of capped langur (*Trachypithecus pileatus*) in Satchari National Park, Bangladesh. *Jagannath University Journal of Life and Earth Sciences*, 4(2), 135-153.
- Ulibarri, L., & Streicher, U. (2012). The "Son Tra douc langur research and conservation project" of Frankfurt Zoological Society. *Vietnamese Journal of Primatology*, 2(1), 37-46.
- Umapathy, G., & Kumar, A. (2003). Impacts of forest fragmentation on lion-tailed macaque and nilgiri langur in Western Ghats, south India. In L. K. Marsh (Ed.), *Primates in fragments: Ecology and conservation* (pp. 163-189). Boston, MA: Springer US. doi:10.1007/978-1-4757-3770-7_12
- Unanthanna, J., & Wickramasinghe, S. (2012). Populations threats, distribution and conservation status of *Semnopithecus priam thersites* at Mihintale National Park, Sri Lanka. *Proceedings of International Forestry and Environment Symposium*, 15 doi:10.31357/fesympo.v15i0.186
- Urbani, B. (2006). A survey of primate populations in north-eastern Venezuelan Guyana. *Primate Conservation*, 2006(20), 47-52. doi:10.1896/0898-6207.20.1.47
- van Schaik, C. P., Poniran, S., Utami, S., Griffiths, M., Djojodharmo, S., Setia, T. M., . . . Tilson, R. (1995). Estimates of orangutan distribution and status in Sumatra. In R. D. Nadler, B. F. M. Galdikas, L. K. Sheeran & N. Rosen (Eds.), *The neglected ape* (pp. 109-116). Boston, MA: Springer US. doi:10.1007/978-1-4899-1091-2_12
- van Vliet, N., & Mbazza, P. (2011). Recognizing the multiple reasons for bushmeat consumption in urban areas: A necessary step toward the sustainable use of wildlife for food in central Africa. *Human Dimensions of Wildlife*, 16(1), 45-54. doi:10.1080/10871209.2010.523924
- Vanthomme, H. P. A., Nzamba, B. S., Alonso, A., & Todd, A. F. (2019). Empirical selection between least-cost and current-flow designs for establishing wildlife corridors in Gabon. *Conservation Biology*, 33(2), 329-338. doi:10.1111/cobi.13194
- Vanthomme, H., Kolowski, J., Korte, L., & Alonso, A. (2013). Distribution of a community of mammals in relation to roads and other human disturbances in Gabon, central Africa. *Conservation Biology*, 27(2), 281-291. doi:10.1111/cobi.12017
- Vega, M. G., Carpinetti, B., Duarte, J., & Fa, J. E. (2013). Contrasts in livelihoods and protein intake between commercial and subsistence bushmeat hunters in two villages on Bioko island, Equatorial Guinea. *Conservation Biology*, 27(3), 576-587. doi:10.1111/cobi.12067

- Vié, J., Richard-Hansen, C., & Fournier-Chambrillon, C. (2001). Abundance, use of space, and activity patterns of white-faced sakis (*Pithecia pithecia*) in French Guiana. *American Journal of Primatology*, 55(4), 203-221. doi:10.1002/ajp.1055
- Wallace, R. B., Humberto Gómez, Felton, A., & Felton, A. M. (2006). On a new species of titi monkey, genus *Callicebus thomas* (primates, Pitheciidae), from western Bolivia with preliminary notes on distribution and abundance. *Primate Conservation*, 2006(20), 29-39. doi:10.1896/0898-6207.20.1.29
- Wallace, R., Martinez, J., Lopez-Strauss, H., Barreta, J., Reinaga, A., & Lopez, L. (2013). Conservation challenges facing two threatened endemic titi monkeys (*Callicebus modestus* & *C. olallae*) in a naturally fragmented Bolivian forest. (pp. 493-501) doi:10.1007/978-1-4614-8839-2_33
- Wang, C., Wang, X., Qi, X., Guo, S., Zhao, H., Wei, W., & Li, B. (2014). Influence of human activities on the historical and current distribution of Sichuan snub-nosed monkeys in the QinLing Mountains, China. *Folia Primatologica*, 85(6), 343-357. doi:10.1159/000368398
- Wang, P., Teng, M., He, W., Tang, C., Yang, J., & Yan, Z. (2018). Using habitat selection index for reserve planning and management for snub-nosed golden monkeys at landscape scale. *Ecological Indicators*, 93, 838-846. doi:10.1016/j.ecolind.2018.05.070
- Wang, W., Qiao, Y., Li, S., Pan, W., & Yao, M. (2017). Low genetic diversity and strong population structure shaped by anthropogenic habitat fragmentation in a critically endangered primate, *Trachypithecus leucocephalus*. *Heredity*, 118 doi:10.1038/hdy.2017.2
- Wangchuk, T. (2005). The evolution, phylogeography, and conservation of the golden langur (*Trachypithecus geei*) in Bhutan.
- Waterman, J. O., Campbell, L. A. D., Maréchal, L., Pilot, M., & Majolo, B. (2020). Effect of human activity on habitat selection in the endangered barbary macaque. *Animal Conservation*, 23(4), 373-385. doi:10.1111/acv.12543
- Watsa, M., Erkenwick, G. A., Rehg, J. A., & Leite Pitman, R. (2012). Distribution and new sightings of Goeldi's monkey (*Callimico goeldii*) in Amazonian Peru. *International Journal of Primatology*, 33(6), 1477-1502. doi:10.1007/s10764-012-9632-1
- Westin, J. L. (2007). Effects of ecotourism on the behavior and health of red howler monkeys (*Alouatta seniculus*) in Suriname. University of Michigan.
- Whittaker, D. J. (2006). A conservation action plan for the Mentawai primates. *Primate Conservation*, 2006(20), 95-105. doi:10.1896/0898-6207.20.1.95
- Wich, S. A., Fredriksson, G., Usher, G., Kühl, H. S., & Nowak, M. G. (2019). The Tapanuli orangutan: Status, threats, and steps for improved conservation. *Conservation Science and Practice*, 1(6), e33. doi:10.1111/csp2.33
- Wich, S. A., Singleton, I., Nowak, M. G., Utami Atmoko, S. S., Nisam, G., Arif, S. M., . . . Kühl, H. S. (2016). Land-cover changes predict steep declines for the Sumatran orangutan (*Pongo abelii*). *Sci Adv*, 2(3), e1500789. doi:10.1126/sciadv.1500789
- Willcox, A. S., & Nambu, D. M. (2007). Wildlife hunting practices and bushmeat dynamics of the Banyangi and Mbo people of southwestern Cameroon. *Biological Conservation*, 134(2), 251-261. doi:10.1016/j.biocon.2006.08.016
- Wong, C. L., & Ni, I. (2000). Population dynamics of the feral macaques in the Kowloon hills of Hong Kong. *American Journal of Primatology*, 50(1), 53-66. doi:10.1002/(SICI)1098-2345(200001)50:1<53::AID-AJP5>3.0.CO;2-A
- Wyman, M. S., & Stein, T. V. (2010). Modelling social and land-use/land-cover change data to assess drivers of smallholder deforestation in Belize. *Applied Geography*, 30(3), 329-342. doi:10.1016/j.apgeog.2009.10.001

- Xia, W., Zhang, C., Zhuang, H., Ren, B., Zhou, J., Shen, J., . . . Li, D. (2020). The potential distribution and disappearing of Yunnan snub-nosed monkey: Influences of habitat fragmentation. *Global Ecology and Conservation*, 21, e00835. doi:10.1016/j.gecco.2019.e00835
- Xiang, Z., Nie, S., Lei, X., Chang, Z., Wei, F., & Li, M. (2009). Current status and conservation of the grey snub-nosed monkey *Rhinopithecus brelichii* (Colobinae) in Guizhou, China. *Biological Conservation*, 142(3), 469-476. doi:10.1016/j.biocon.2008.11.019
- Yan, Z., Teng, M., He, W., Wang, Y., Yang, J., & Wang, P. (2018). Improving conservation effectiveness of nature reserve for golden snub-nosed monkey, a niche-based approach. *Ecology and Evolution*, 8(18), 9315-9325. doi:10.1002/ece3.4447
- Yanqing, G., Baoping, R., Qiang, D., Jun, Z., Garber, P., & Zhou, J. (2020). Habitat estimates reveal that there are fewer than 400 Guizhou snub-nosed monkeys, *Rhinopithecus brelichii*, remaining in the wild. *Global Ecology and Conservation*, e01181. doi:10.1016/j.gecco.2020.e01181
- Yap, J. L., & Ruppert, N. (2019). Bridging the gap – Malaysia’s first urban canopy bridge to help arboreal animals to cross roads safely doi:10.13140/RG.2.2.27430.27209
- Yap, J. L., Ruppert, N., & Fadzly, N. (2019). Activities, habitat use and diet of wild dusky langurs, *Trachypithecus obscurus* in different habitat types in Penang, Malaysia. *Journal of Sustainability Science and Management*, 14(4), 71-85.
- Yimkao, P., & Srikosamatara, S. (2006). Ecology and site-based conservation of the white-handed gibbon (*Hylobates lar*) in human-use forests in Mae Hong Son Province, northern Thailand. *Natural History Bulletin of the Siam Society*, 54(1), 109-138.
- Yu, Z., Li, L., Li, D., & Gongsheng, W. (2018). Evaluation of habitat suitability based on patches of the Sichuan snub-nosed monkey (*Rhinopithecus roxellana*) in Shennongjia, Hubei province. *Acta Ecologica Sinica*, 38 doi:10.5846/stxb201705040829
- Yuh, Y. G., Dongmo, Z. N., N’Goran, P. K., Ekodeck, H., Mengamenya, A., Kuehl, H., . . . Elvis, T. (2019). Effects of land cover change on great apes distribution at the Lobéké National Park and its surrounding forest management units, south-east Cameroon. A 13-year time series analysis. *Scientific Reports*, 9(1), 1445. doi:10.1038/s41598-018-36225-2
- Yunyun, Z., Yadong, X., Yu, Z., Huiliang, Y., Linsen, Y., Jun, J., & Yuguang, Z. (2018). Genetic structure of the golden snub-nosed monkey in Shennongjia national natural reserve based on microsatellite DNA markers. *Acta Ecologica Sinica*, 38. doi:10.5846/stxb201612192613
- Zeng, Y., Xu, J., Wang, Y., & Zhou, C. (2013). Habitat association and conservation implications of endangered Francois’ langur (*trachypithecus francoisi*). *Plos One*, 8(10), e75661. doi:10.1371/journal.pone.0075661
- Zhang, G. (2019). Integrating citizen science and GIS for wildlife habitat assessment. doi:10.5772/intechopen.83681
- Zhang, Y., Zhou, Y., Liu, X., Yu, H., Li, D., & Zhang, Y. (2019). Genetic diversity of the Sichuan snub-nosed monkey (*Rhinopithecus roxellana*) in Shennongjia National Park, China using RAD-seq analyses. *Genetica*, 147(3), 327-335. doi:10.1007/s10709-019-00073-3
- Zhao, Q. -, & Deng, Z. (1992). Dramatic consequences of food handouts to *Macaca thibetana* at Mount Emei, China. *Folia Primatologica*, 58(1), 24-31. doi:10.1159/000156603
- Zhou, J., Wei, F., Li, M., Zhang, J., Wang, D., & Pan, R. (2005). Hainan black-crested gibbon is headed for extinction. *International Journal of Primatology*, 26(2), 453-465. doi:10.1007/s10764-005-2933-x