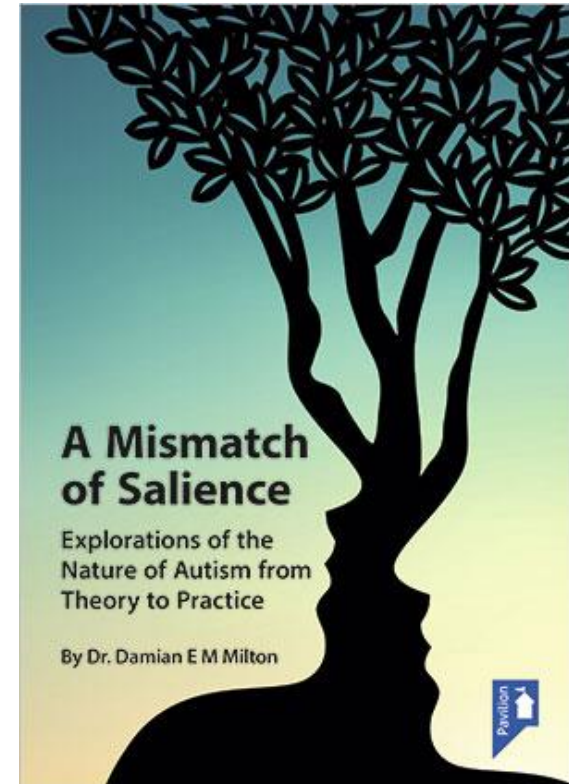


# The double empathy problem - towards mutual understanding in a neurodiverse world

*Dr. Damian E M Milton*



- *The autist is only himself...and is not an active member of a greater organism which he is influenced by and which he influences constantly. (Asperger, 1991: 38).*
- The 'theory of mind' model and what it leaves out.

# Early days and how the theory developed

- “Embodied sociality and the conditioned relativism of dispositional diversity” (Milton, 2014b) – reflections on work from the 1990s.
- By late 2000s had come across the work of autistic authors such as Jim Sinclair and Claire Sainsbury and had started to use the term ‘double empathy problem’ at a parent group I was a part of as a response to ideas regarding ‘theory of mind’
- First presentations on topic in 2010, and first publication in a journal in 2012.
- Yet not alone in way of thinking – see Ian Hacking, Victoria McGeer, Luke Beardon, and Rachel Cohen-Rottenberg among others.

# Mutual incomprehension

- *“95% of people don’t understand me”.*
- *“Friends are overwhelming”.*
- *“Adults never leave me alone”.*
- *“Adults don’t stop bullying me”.*
  
- Quotes taken from Jones et al. (2012).

# The 'double empathy problem'

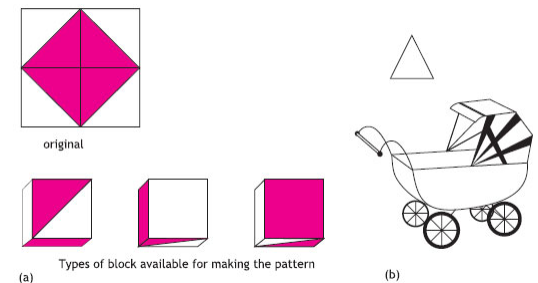
- A case of mutual incomprehension?
- Breakdown in interaction between autistic and non-autistic people as not solely located in the mind of the autistic person. The theory of the double empathy problem sees it as largely due to the differing perspectives of those attempting to interact with one another (Milton, 2012a; 2014a; Milton et al. 2018; Chown, 2014).
- Theory of autistic mind can often leave a great deal to be desired.
- Fork handles!

# Dyspathy

- Cameron (2012) uses the term ‘dyspathy’ to highlight how empathy is often blocked or resisted by people.
- Such research supports the earlier social psychological theories of Tajfel (1981), which found that people felt increasing emotional connection to those deemed within their social ‘in-group’, whilst stereotyping ‘outsiders’.
- *“If we were to be continually tuning into other people’s emotions, we would be perpetually anxious or exhilarated, and very quickly exhausted. We must therefore have very efficient inhibitory mechanisms that screen out most of the emotional empathy being carried out by our brains, without us even noticing.”* (Cameron, 2012).

# An 'interest model' of autism

- Autism and cognitive models of deficit.
- Autism and monotropism (Murray et al. 2005; Lawson, 2010).
- Attention as a scarce resource.
- Monotropic attention strategies and the 'attention tunnel'.
- Monotropism, repetitive behaviour and interests, and 'flow states'.



# Interactional expertise

- The imitation game.
- Contributory expertise.
- How much interactional expertise is possible (Milton, 2014)?
- How much effort has been made by researchers and those designing practice models?



# The evidence-base

- Sheppard et al. (2016) investigated non-autistic participants' ability to interpret the behavioural reactions of autistic people in naturalistic social interactions.
- Non-autistic participants who viewed the recorded videos were less able to guess which event the video participant had experienced for autistic than non-autistic participants, apart from for reactions to a joke.

# Studies of forming first impressions

- Research has also asked a more general question of how autistic people are perceived by non-autistic others.
- If autistic people are perceived less favourably then this could result in avoidance and social exclusion, contributing to the social difficulties experienced.
- Stagg et al. (2014) found that non-autistic adults rated autistic children as less expressive and less attractive than the non-autistic children based on brief videos of them.

- Sasson et al. (2017a) carried out three studies in which they showed that non-autistic adults rated autistic adults and children less favourably than non-autistic adults and children on a wide variety of evaluative dimensions, as well as indicating reduced intentions to engage with them.
- Further research by Sasson et al. (2017b) examined the impact of providing diagnostic labelling information on the impressions formed and found this to have a positive effect.

# Studies of metaperception

- Sasson et al. (2018) participants were asked to estimate how they thought others would perceive them on a wide range of personality traits, then observers judged them on the same traits after viewing a recording of them.
- They found that autistic participants were less accurate than non-autistic participants in judging how they would be perceived as others, because they overestimated how positively they would be perceived.

- Usher et al. (2018) studied impressions formed by dyads of adolescents where one member of the dyad was autistic and one was not, who engaged in a five-minute conversation.
- Autistic participants were found to be more accurate in judging whether the non-autistic partner liked them than non-autistic participants were.

- Heasman and Gillespie (2017) investigated perceptions and misperceptions for dyads of autistic individuals and their family members.
- When asked about reasons for misunderstandings, family members tended to cite an extreme impairment in social understanding of the autistic person, while autistic participants themselves reflected on both the self and other as causes of misunderstandings.

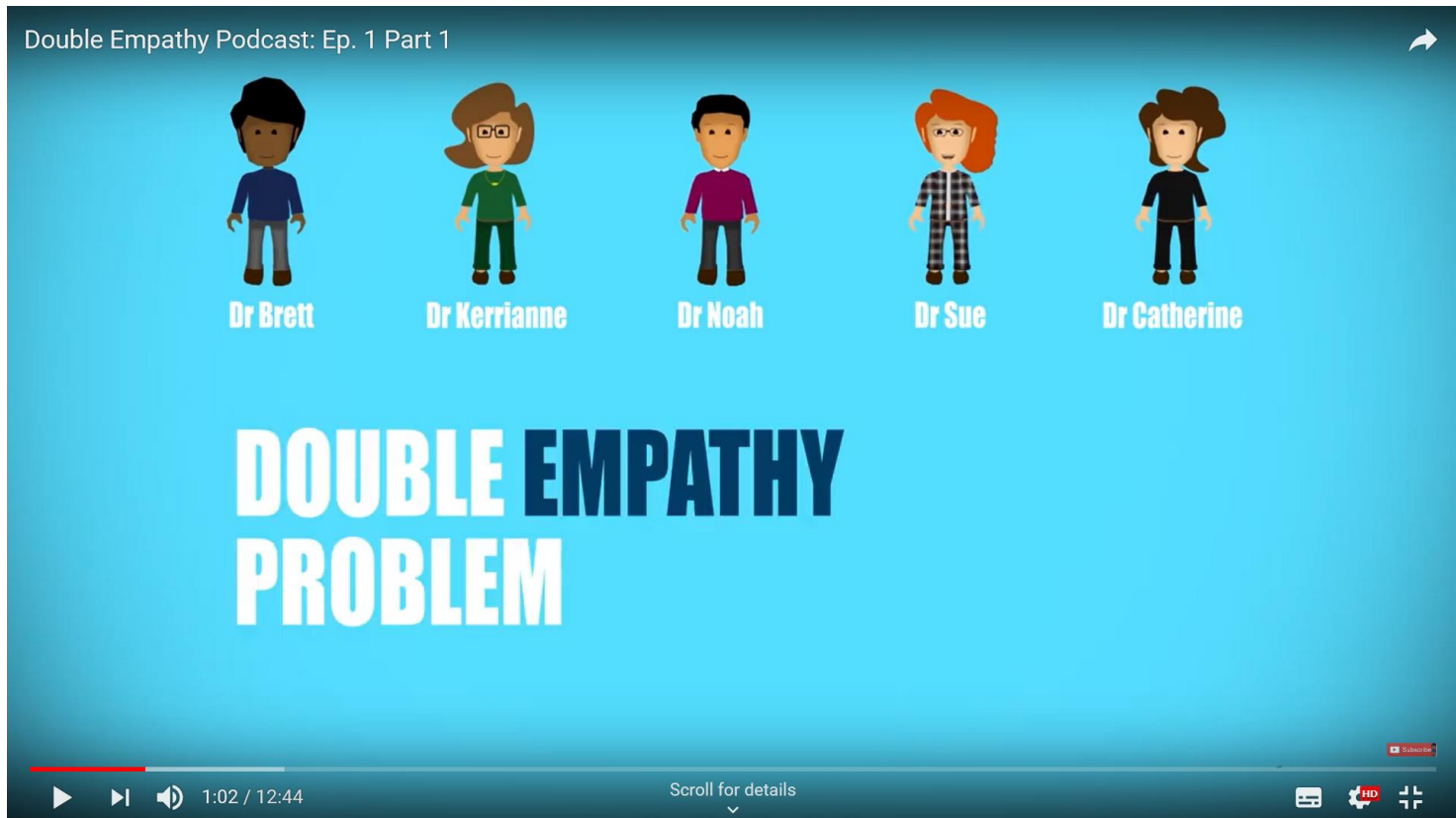
- Overall, studies of metaperception suggest that autistic people are quite good at estimating how specific others perceive them, but may have some difficulty judging how they come across in general. Consistent with the DEP, non-autistic people may have difficulty working out how they are perceived by autistic people whom they have just met.

# Interactions between autistic people

- It has been observed that autistic people appear to have a greater affinity with other autistic people than non-autistic people generally do (Chown, 2014).
- This raises the possibility that autistic people may show improved, if not superior, understanding of other autistic people and may consequently show fewer signs of 'social impairment' in the company of their in-group (Tajfel, 1981).
- This is indeed what has been shown in work carried out by Catherine Crompton at the University of Edinburgh: [Autistic peer-to-peer information transfer is highly effective - Catherine J Crompton, Danielle Ropar, Claire VM Evans-Williams, Emma G Flynn, Sue Fletcher-Watson, 2020 \(sagepub.com\)](#)



# The Double Empathy Problem Virtual Symposium



# New directions

- The work of Robert Chapman, and designers such as Wendy Keay-Bright, Katie Gaudion and Jelle van Dijk.
- Crossover with neuroscientific theory regarding ‘predictive coding’:
- The dialectical misattunement hypothesis: *“...views psychopathology not merely as disordered function within single brains but also as a dynamic interpersonal mismatch that encompasses various levels of description.”* (Bolis, 2017).
- A ‘mismatch of salience’.


# New directions

- [Using interpretative phenomenological analysis in autism research - Katie Howard, Napoleon Katsos, Jenny Gibson, 2019 \(sagepub.com\)](#)
- [An Expert Discussion on Autism and Empathy | Autism in Adulthood \(liebertpub.com\)](#)
- [Frontiers | Mutual \(Mis\)understanding: Reframing Autistic Pragmatic “Impairments” Using Relevance Theory | Psychology \(frontiersin.org\)](#)
- [Autism and the double empathy problem: Implications for development and mental health - Mitchell - 2021 - British Journal of Developmental Psychology - Wiley Online Library](#)
- [Barriers to healthcare for autistic adults: Consequences & policy implications. A cross-sectional study | medRxiv](#)
- [Non-Autistic Children Do Not Object to Autistic-Like Behaviors – YouTube](#)

# New directions – Yo-Lun Chen and Kristie Patten; Debrander et al.

**Student-Peer Neurotype Match Rather than Autistic Diagnosis Predicts Peer Connection Density and Strength in Autistic<sup>1</sup> and Non-Autistic Adolescents in an Inclusive School Club**  
 We use an identity-first language as it is preferred by a large percentage of the autistic community (Berry et al., 2018).

**Yo-Lun Chen, PhD, OTR (yulun.chen@nyu.edu) & Kristie Patten, PhD, OTR/L (kristie.patten@nyu.edu)**  
 Department of Occupational Therapy, Steinhardt School of Culture, Education, and Human Development, New York University



**Background**

- Social connections are crucial to autistic mental health and well-being.
- Research on autistic social connections indicates that autistic students tend to have fewer peer relationships and are problem in their classroom social networks.
- Both though social interactions are bidirectional, it is known about how peer neurotypes affect autistic students' social outcomes.
- The double empathy problem theory posits that autistic people's social challenges may be due to a bidirectional mismatch between autistic and nonautistic social perceptions and characteristics, emphasizing the role of social peer context (Social Interactions, 2018).
- Recent studies found that within-neurotype social interaction predict better social outcomes than cross-neurotype interactions, suggesting the need to understand how peer factors affect autistic social outcomes.

**Objectives**

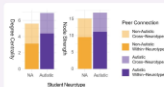
- To compare same-neurotype and cross-neurotype peer connections among autistic and non-autistic adolescents in an inclusive school social networks of peer interactions to inclusive education.
- To investigate whether student peer neurotype match predicts student's quantity and strength of social connections, besides autism diagnosis.
- To examine whether student social networks demonstrate assortative mixing based on neurotype or social identity, that is whether students tend to connect with same-neurotype peer or a peer with similar levels of social activity/prosody.

**Method**

- Participants: 8 autistic and 6 non-autistic adolescents (grades 6 to 12).
- Setting: an inclusive school club (Maker Club) at public middle school in a large urban area.
- Student social networks in the club were plotted based on longitudinal observation of peer interactions in 8 club sessions over 5 months.
- The following social network measures were calculated for both within- and cross-neurotype peer connections:
  - Degree centrality: The quantity of a student's social connections.
  - Nodes strength: The total strength of a student's social connections, as indicated by response rates for four levels.
- Assortativity coefficients were calculated to examine assortative mixing by neurotype and degree centrality in the club networks.

**Results**

- Figure 1 shows the proportions of within- and cross-neurotype peer connections in autistic and non-autistic students. Both groups showed higher degree centrality and stronger node strength in within-neurotype than cross-neurotype conversations (Table 1).
- Mixed effects models showed that student peer neurotype match was significantly associated with more social ties and stronger connection strength when controlling for student neurotype and gender (Table 2), suggesting that students had more and stronger within-type peer connections than cross-group connections. Autistic students did not predict better degree or quantity of stronger connections in both networks.
- Figure 2 plots the average club social network across 8 sessions. The plot reveal a strong tendency for students to connect with same-neurotype peers, particularly in the subgroup of strong peer connections.



**Figure 1. Within- and cross-neurotype social connections.**

**Table 1. Degree Centrality and Node Strength by Neurotype**

Neurotype	Within-Neurotype	Cross-Neurotype	Within-Neurotype	Cross-Neurotype
Autistic	1.07	0.51	0.01	0.01
Non-Autistic	1.12	0.52	0.01	0.01

**Table 2. Degree Centrality and Node Strength by Neurotype**

	Autistic	Nonautistic	F	df	p
Degree	0.87***	0.14	6.1	(1, 13)	0.02
Strength	3.27***	0.14	10.7	(1, 13)	0.003

**Conclusions**

This preliminary study explored the role of interpersonal similarity on autistic adolescents' social networks in natural peer interactions. The results showed that matched student peer neurotype rather than autism diagnosis predicted the quantity and strength of connections, and students tended to connect with their same-neurotype peers. This study emphasized that peer context influences autistic social networks, suggesting that social interventions may start to look for autistic social behaviors to peer context, such as peer understanding.

**References**

1. Chen, Y., & Patten, K. (2023). Student-Peer Neurotype Match Rather than Autistic Diagnosis Predicts Peer Connection Density and Strength in Autistic and Non-Autistic Adolescents in an Inclusive School Club. *Journal of Autism and Developmental Disorders*, 53(12), 12345-12355.

**Autistic Adults Accurately Detect Social Disinterest in their Conversation Partners when Non-Autistic Adults Do Not**

Kilee M. DeBrabander, M.S., Desiree R. Jones, M.S., & Noah J. Sasson, PhD.  
 School of Behavioral and Brain Sciences, The University of Texas at Dallas, Richardson, Texas

**Background**

- Misinterpretation often to have one perspective they are perceived by others.
- Consistent with a social cognitive deficit model, some studies suggest that autistic people are less accurate in gauging how they are perceived.
- Theories that studies that assess misperception using the response between self and informant report or video recordings to others' interpretations.
- While self-rated social interaction, autistic participants may be more accurate than non-autistic (NA) participants at predicting how they are perceived by NA conversation partners.
- This may be because they are less likely than NA participants to demonstrate a "self-enhancement" bias in which NA people overestimate how positively they are viewed by others.
- Here, we examine the accuracy of misperceptions of autistic and NA adults within one-diagnostic and individual-diagnostic cross-sectional dyads.
- Participants predicted how their conversation partners would evaluate the quality of the interaction, but also objective tests, and their social interest in future interaction with them.
- We hypothesized that autistic adults would show greater misperception accuracy with autistic relative to NA conversation partners.

**Methods**

- 47 autistic (A) males with confirmed diagnoses, 58 NA males.
- Three dyad types: A-A, A-NA, NA-NA.
- Diadic and diagnostic groups comparable on age (grandmedianly 36.6 and 32.1 years = 13% but differed slightly on age ( $\chi^2(1) = 25.5, p < .001$ )).
- Age, sex, and IQ were controlled in analyses.
- Methods: 1. Interacted 5-minute "get to know you" conversation with previously unfamiliar 1 or NA partner.
- Computational questionnaires.
- Social Interaction Evaluation Measure (SIEM) - 11 items assessing conversation quality, disclosure, engagement, and intimacy. Averaged to create an overall quality composite.
- First Impression Scale (FIS) - 10 items assessing perceptions of others on six traits (e.g., awkwardness and fine social interest) in a 7-point Likert scale with this person. Data analyzed independently, social interest averaged to a composite.
- After the conversation, A and NA participants completed two versions of the SIEM and FIS.
- First on their partners.
- Then on how they believed their partner would rate them.

**Results**

After Partner Interactions: Autistic (A) and NA (NA) participants' ratings of the other's interest and intention of the conversation were significantly correlated.

**Truth and Bias Model:** Across the "truth" of a judgment (e.g., person's accuracy in predicting how they were rated by their partner) and the "bias" of a judgment (e.g., the degree to which a person over or under-estimated how they were rated by their partner).

- Autistic truth values and autism misperception ratings were significantly related to interaction quality, misperceptions, and misinterpretations.
- Autistic ratings that partners were less likely on them were predicted that their partners would rate them higher in return.
- No significant partner effects. Participants' predictions of how they were rated by their partners did not align with their partners actual ratings.
- Significant interaction between age diagnosis and the partner's truth value for social interest ( $p < .001$ ).
- Autistic misperceptions for social interest were significantly related to the partner's actual evaluation the autistic adults ( $p < .007$ ) but not NA adults ( $p > .20$ ).
- Misperception of intelligence was significantly related to the truth value for NA adults ( $p < .02$ ).
- NA participants who perceived themselves to be more intelligent were rated as less intelligent by partners. This effect was not significant for autistic adults ( $p > .10$ ).

**Table 1. Mean and standard deviation of variables across by diagnostic and dyad type.**

	A-A	A-NA	NA-A	NA-NA	F	df	p
Interaction Quality	2.18	2.11	2.11	2.18	0.00	(3, 104)	0.99
Misperception	1.24	1.17	1.17	1.24	0.00	(3, 104)	0.99
Truth	1.18	1.18	1.18	1.18	0.00	(3, 104)	0.99
Intention	1.18	1.18	1.18	1.18	0.00	(3, 104)	0.99
Age	36.6	32.1	32.1	36.6	25.5	(1, 104)	0.001
Sex	0.5	0.5	0.5	0.5	0.00	(3, 104)	0.99
IQ	118	118	118	118	0.00	(3, 104)	0.99
SIEM	1.18	1.18	1.18	1.18	0.00	(3, 104)	0.99
FIS	1.18	1.18	1.18	1.18	0.00	(3, 104)	0.99

**Table 2. Misperceptions for social interest effect.**

	Autistic	Nonautistic	F	df	p
Truth	0.14	0.14	0.00	(1, 104)	0.99
Bias	0.14	0.14	0.00	(1, 104)	0.99
Interaction Quality	0.14	0.14	0.00	(1, 104)	0.99
Misperception	0.14	0.14	0.00	(1, 104)	0.99
Truth	0.14	0.14	0.00	(1, 104)	0.99
Intention	0.14	0.14	0.00	(1, 104)	0.99

**Conclusions**

- Both autistic and NA adults showed relatively poor misperception for many traits.
- All participants, not just autistic ones, had difficulty predicting how others viewed them after a conversation.
- However, only autistic adults' ratings of their partner's social interest aligned with how these partners actually perceived them.
- They accurately predicted both when their partners wanted to interact again and when they did not. Such findings are inconsistent with a social cognitive deficit interpretation.
- In contrast, NA adults predicted that their conversation partners would be more interested in future interaction with them than their autistic and NA partners actually reported.
- Autistic adults did not show the typical NA "self-enhancement bias".
- This may be due to prior poor social experiences and internalized beliefs that contribute to them expecting low social interest.
- The more accurate appraisal of their partners social interest would relate to greater social experience and social anxiety than NA adults who assume greater social interest from others.

**References**

1. DeBrabander, K.M., Jones, D.R., & Sasson, N.J. (2023). Autistic Adults Accurately Detect Social Disinterest in their Conversation Partners when Non-Autistic Adults Do Not. *Journal of Autism and Developmental Disorders*, 53(12), 12345-12355.

# Cultural imperialism

- Those that have power in society can determine how those in a position of powerlessness are interpreted and talked about (Young, 1990).
- Notions such as 'ableism' and 'mansplaining' can be seen as having roots in similar notions of a taken-for-granted unconscious frame of reference which renders the 'other' invisible.



# Power

- Important to remember that the double empathy problem is situated within wider unequal (and intersectional) power relations.
- Avoiding tokenism and ceding power. Humility and rapport (tacit knowledge) building.
- Reducing imposition of social expectations.

# Collaboration

- Setting the research agenda.
- Design and development of strategies and methodologies.
- Avoiding tokenism...
- The Participatory Autism Research Collective (PARC):  
[www.PARCAutism.co.uk](http://www.PARCAutism.co.uk)



# Frontiers for Young Minds article

- Double Empathy:  
Why Autistic  
People Are Often  
Misunderstood .  
Frontiers for  
Young Minds  
(frontiersin.org)





## A couple of quotes to conclude:

- *Grant me the dignity of meeting me on my own terms...Recognise that we are equally alien to each other, that my ways of being are not merely damaged versions of yours. Question your assumptions. Define your terms. Work with me to build bridges between us. (Sinclair, 1993).*

- *When I am in an environment I feel comfortable in, with people who are kind and tolerant, and doing things I enjoy, then I am as happy as the next person. It is when people tell me I should think, speak or behave differently that I start to feel different, upset, isolated and worthless. So surely the problem is a lack of fit with the environment rather than something inside my brain that needs to be fixed? (Victoria, 'Are You Taking Something for It?', issue 76, 12; cited in Milton and Sims, 2016).*

# References

- Baggs, A. (2007) *In My Language*. Accessed from: <http://www.youtube.com/watch?v=JnylM1hl2jc>, on 19/10/12.
- Bolis, D. (2017). Beyond Autism: Introducing the Dialectical Misattunement Hypothesis and a Bayesian Account of Intersubjectivity. *Psychopathology*. Vol. 50(6): 355-372.
- Cameron, L. (2012) *Dyspathy: the dynamic complement of empathy*. *The Open University*.
- Chown, N. (2014) More on the ontological status of autism and double empathy. *Disability and Society*. Vol. 29(10): 1672-1676.
- Collins, H. (2010) *Tacit and Explicit Knowledge*. London: University of Chicago Press.
- Collins, H. (2011) Three dimensions of expertise. *Phenomenological Cognitive Science*. Published online 06/04/11.
- Collins, H. and Evans, R. (2007) *Rethinking Expertise*. London: University of Chicago Press.
- Crompton, C. J., Fletcher-Watson, S., & Ropar, D. (2019). Autistic peer to peer information transfer is highly effective, *Autism*.
- Crompton C, DeBrabander K, Heasman B, Milton D and Sasson N (2021) Double Empathy: Why Autistic People Are Often Misunderstood. *Front. Young Minds*. 9:554875.
- Deligny, F. (2015) *The Arachnean and Other Texts (trans. Drew S. Burk and Catherine Porter, 2015)*. Minneapolis: Univocal publishing.
- Derrida, J. (1988) *Limited Inc*. Evanston: Northwestern University Press.
- Doherty, M., Neilson, S. D., D O'Sullivan, J., Carravallah, L., Johnson, M., Cullen, W., & Gallagher, L. (2020). Barriers to healthcare for autistic adults: Consequences & policy implications. A cross-sectional study. *MedRxiv*.
- Edey, R., Cook, J., Brewer, R., Johnson, M. H., Bird, G., & Press, C. (2016). Interaction takes two: Typical adults exhibit mind-blindness towards those with autism spectrum disorder. *Journal of Abnormal Psychology*, 125(7), 879-885.
- Garfinkel, H. (1967) *Studies in Ethnomethodology*. Englewood Cliffs: Prentice-Hall.
- Hacking, I. (2009) Autistic autobiography, *Philosophical Transactions of the Royal Society: Biological Sciences*. Vol. 364(1522), p. 1467-1473.

- Heasman, B., & Gillespie, A. (2017). Perspective-taking is two-sided: misunderstandings between people with Asperger's syndrome and their family members . *Autism*, Epub ahead of print 07 July 2017. DOI: 10.1177/136. <http://doi.org/10.1177/1362361317708287>
- Howard, K., Katsos, N., & Gibson, J. (2019). Using interpretative phenomenological analysis in autism research. *Autism*, 23(7), 1871-1876.
- Kelly, G. (1955/1991) *The Psychology of Personal Constructs, volumes 1 and 2*. London: Routledge.
- Lawson, W. (2010) *The Passionate Mind: how people with autism learn*. London: Jessica Kingsley.
- Mills, R. (2013) *Guidance for Considering a Treatment Approach in Autism*. Accessed 11/02/14: <http://www.autism.org.uk/living-with-autism/strategies-and-approaches/before-choosing-an-approach/guidance-for-considering-a-treatment-approach-in-autism.aspx>
- Milton, C. (2002) *Beyond the Frame [MA project – unpublished]*. University of Portsmouth.
- Milton, D. (1999) *The Rise of Psychopharmacology [Masters Essay – unpublished]*. University of London.
- Milton, D. (2011) 'Who am I meant to be': in search of a psychological model of autism from the viewpoint of an 'insider'. *Critical Autism Seminar 18/01/11*. Sheffield Hallam University.
- Milton, D. (2012a) On the ontological status of autism: the double empathy problem. *Disability and Society*. Vol. 27(6): 883-887.
- Milton, D. (2012b) *So what exactly is autism?* Autism Education Trust.
- Milton, D. (2014a) Autistic expertise: a critical reflection on the production of knowledge in autism studies. *Autism: The International Journal of Research and Practice*, Vol. 18(7): 794-802.
- Milton, D. (2014b) Embodied sociality and the conditioned relativism of dispositional diversity, *Autonomy*, Vol. 1(3).
- Milton, D. (2016) Disposable dispositions: reflections upon the work of Iris Marion Young in relation to the social oppression of autistic people. *Disability and Society*, Vol. 31(10): 1403-1407.
- Milton, D. (2017) *A Mismatch of Salience: an exploration of autism from theory to practice*. Hove: Pavilion Press.

- Milton, D. and Bracher, M. (2013) Autistics speak but are they heard? *Medical Sociology Online*. Vol. 7(2): 61-69, [online]. [http://www.medicalsociologyonline.org/resources/Vol7Iss2/MSo\\_7.2\\_Autistics-speak-but-are-they-heard\\_Milton-and-Bracher.pdf](http://www.medicalsociologyonline.org/resources/Vol7Iss2/MSo_7.2_Autistics-speak-but-are-they-heard_Milton-and-Bracher.pdf), [Accessed 06/11/16].
- Milton, D., & Sims, T. (2016). How is a sense of well-being and belonging constructed in the accounts of autistic adults? *Disability and Society*, 31(4), 520–534. <http://doi.org/10.1080/09687599.2016.1186529>
- Mitchell, P., Sheppard, E., & Cassidy, S. (2021). Autism and the double empathy problem: Implications for development and mental health. *British Journal of Developmental Psychology*, 39(1), 1-18.
- Moore, H., & Gillespie, A. (2014). The caregiving bind: concealing the demands of informal care can undermine the caregiving identity. *Social Science and Medicine*, 116, 102–109. <http://doi.org/10.1016/j.socscimed.2014.06.038>
- Mullin, J. (2009) *Drawing Autism*. New York: Mark Batty.
- Murray, D. (1992). 'Attention Tunnelling and Autism'. In P. Shattock and G. Linfoot (eds), *Living with Autism: the Individual, the Family and the Professional*. Durham Research Conference, April 1995, pp. 183-193.
- Murray, D., Lesser, M. and Lawson, W. (2005) 'Attention, monotropism and the diagnostic criteria for autism.' *Autism*. Vol. 9(2), pp. 136-156.
- Ne'eman, A. (2011) Question and Answer interview, accessed at <http://www.talkaboutautism.org.uk/community/live-qa-events/010611-ari-neeman>
- Nicolaidis, C., Milton, D., Sasson, N. J., Sheppard, E., & Yergeau, M. (2018). An expert discussion on autism and empathy. *Autism in adulthood*, 1(1), 4-11.
- Nind, M. and Hewitt, D. (1994) *Access to Communication*. London: David Fulton.
- Parsons, T. (1951) *The Social System*. New York: The Free Press.
- Pirsig, R. M. (1974) *Zen and the Art of Motorcycle Maintenance*. London: Vintage.
- Pirsig, R. (1991) *Lila: An Inquiry into Morals*. London: Black Swan.
- Polanyi, M. (1958) *Personal Knowledge*. London: Routledge.
- Ridout, S. (2014) More than Picture-Making: Reflecting on Collage as a Narrative Tool for Opening Discourse on the Involvement of Autistics in Autism Research. *Autonomy, the Critical Journal of Interdisciplinary Autism Studies*, 1(3), [online]. <http://www.larry-arnold.net/Autonomy/index.php/autonomy/article/view/AR14/html>, [Accessed 11<sup>th</sup> August 2017].

- Sasson, N. J., Faso, D. J., Nugent, J., Lovell, S., Kennedy, D. P., & Grossman, R. B. (2017a). Neurotypical peers are less willing to interact with those with autism based on thin slice judgments. *Scientific Reports*, 7, 40700.
- Sasson, N. J., & Morrison, K. E. (2017b). First impressions of adults with autism improve with diagnostic disclosure and increased autism knowledge of peers. *Autism*, 1362361317729526.
- Sasson, N. J., Morrison, K. E., Pinkham, A. E., Faso, D. J., & Chmielewski, M. (2018). Brief Report: Adults with Autism are Less Accurate at Predicting How Their Personality Traits are Evaluated by Unfamiliar Observers. *Journal of Autism and Developmental Disorders*, 1-6.
- Sheppard, E., Pillai, D., Wong, G. T. L., Ropar, D., & Mitchell, P. (2016). How easy is it to read the minds of people with autism spectrum disorder?. *Journal of Autism and Developmental Disorders*, 46(4), 1247-1254.
- Stagg, S. D., Slavny, R., Hand, C., Cardoso, A., & Smith, P. (2014). Does facial expressivity count? How typically developing children respond initially to children with autism. *Autism*, 18(6), 704-711.
- Tajfel, H. (1981) *Human groups and social categories*. Cambridge: Cambridge University Press.
- Usher, L. V., Burrows, C. A., Messinger, D. S., & Henderson, H. A. (2018). Metaperception in Adolescents With and Without Autism Spectrum Disorder. *Journal of Autism and Developmental Disorders*, 48(2), 533-548.
- Wenger, E. (1998) *Communities of Practice: Learning, Meaning and Identity*. Cambridge: Cambridge University Press.
- Williams, G. L., Wharton, T., & Jagoe, C. (2021). Mutual (Mis) understanding: Reframing Autistic Pragmatic “Impairments” Using Relevance Theory. *Frontiers in Psychology*, 12, 1277.
- Young, I. (2005, first published 1990), "Five faces of oppression", in Cudd, Ann E; Andreasen, Robin O., *Feminist theory: a philosophical anthology*, Oxford, UK Malden, Massachusetts: Blackwell, pp. 91–104.

# THE UK'S EUROPEAN UNIVERSITY



[www.kent.ac.uk](http://www.kent.ac.uk)

University of  
**Kent**