



**AK BULLET (7,62 x 39 MM) HOLES ON 1 MM SHEET METAL; A FORENSIC-RELATED STUDY IN AID OF BULLET TRAJECTORY RECONSTRUCTION**

Journal:	<i>Journal of Forensic Sciences</i>
Manuscript ID	JOFS-21-043.R1
Manuscript Type:	Paper
Keywords:	Bullet holes, AK rifles, 7.62 x 39 mm, Shooting Reconstruction, Bullet trajectory determinations, Sheet metal

SCHOLARONE™  
Manuscripts

1  
2 **AK bullet (7.62 x 39 mm) holes on 1 mm sheet metal: A forensic-related study in aid of**  
3  
4 **bullet trajectory reconstruction**  
5  
6  
7  
8  
9

10 Bandula Nishshanka MSc<sup>1</sup>; Chris Shepherd PhD<sup>2</sup>; Randika Ariyaratna MSc<sup>3</sup>  
11  
12  
13  
14

15 <sup>1</sup>Centre for Research and Development – Ministry of Defence, Sri Lanka  
16

17 <sup>2</sup>University of Kent, U.K.  
18

19 Corresponding author: Bandula Nishshanka MSc Email: [bmsnishshanka@yahoo.com](mailto:bmsnishshanka@yahoo.com)  
20  
21  
22  
23  
24  
25  
26  
27  
28  
29  
30

31 Running head: AK bullet (7.62 x 39 MM) holes on 1 mm sheet metal  
32  
33  
34  
35  
36  
37  
38  
39  
40  
41  
42  
43  
44  
45  
46  
47  
48  
49  
50  
51  
52  
53  
54  
55  
56  
57  
58  
59  
60

**Abstract**

Bullet holes play a major role in the trajectory determination of fired bullets, potentially suggesting where the shots were fired from. Few methods are currently employed to estimate the angles of incidence of fired bullets using bullet holes. The literature has stressed that knowledge about the impact behaviour of the specific bullet-substrate interfaces, including the most viable method for estimating the angle of incidence of that combination, requires empirical testing to enable successful analysis.

The perforating bullet hole characteristics of AK bullets fired into 1 mm sheet metal over a range of angles of incidence have been documented in this study to aid bullet trajectory determination. A strong inverse relationship has been demonstrated between particular impact mark dimensions and the angles of incidence, revealing the possibility of using these dimensions to predict the angles of incidence for AK bullets perforating 1 mm sheet metal in actual crime scenes. This study has further confirmed the existence of a recently reported phenomenon for impacts related to this projectile-substrate combination, the “double-headed impact mark”, and relationships with the angles of incidence of fired AK bullets.

While suggesting an alternative and confirmative new method to understand the angles of incidence of fired AK bullets in 1 mm sheet metal using measured bullet defects, the study highlights a complex deviation phenomenon and a potential error that could occur when determining bullet trajectories using probing, stringing, or laser methods for the impact conditions described.

**KEYWORDS**

bullet holes, AK rifles, 7.62 x 39 mm, shooting reconstruction, bullet trajectory determinations, sheet metal

## Highlights

- AK bullet hole characteristics from different angles in 1 mm sheet metal are explored in this study.
- The measured AK bullet impact mark on 1 mm sheet metal potentially indicates the incident angle.
- Double-headed bullet impact mark is observed over a wider range of angles than previously reported.
- Low-angled AK bullets perforating 1 mm sheet metal produce misleading secondary bullet defects.

## Introduction

Following any shooting incident, bullet holes and their characteristics are considered important sources of evidence. In particular, bullet holes can play a major role in the trajectory determination of fired bullets, potentially suggesting from where the shots were fired (1). In addition to the probing method, which uses the direct line between two consecutive bullet holes to decide the trajectory of a fired bullet (2), previous studies (3) have highlighted two additional methods for determining the trajectory of fired bullets: the lead-in method and the ellipse method. The lead-in method uses the three-dimensional shape of the lead-in portion of a bullet defect to estimate the angle of incidence, while the ellipse method uses the shape of the primary bullet defect to calculate the angle of incidence. Stringing (4) and laser methods (5) can also be used for such analyses and follow a similar general technique to the probing method.

Out of many surface types used for bullet perforation experiments to estimate the angles of incidence of fired bullets, sheet metal has been frequently considered with different ammunition combinations due to its frequent appearance in shooting incidents with bullet holes (2, 3, 6, 7, 8, 9, 10, 11, and 12). These studies have described bullet hole characteristics on sheet metal surfaces in relation to bullet trajectory determination. However, recent studies have highlighted certain issues concerning accuracy, precision, and other potential errors when probing, ellipse, and lead-in methods are used to estimate the trajectories of fired bullets. In general, the best results in terms of accuracy and precision of estimation can be obtained when the probing method is used, whereas both the lead-in and ellipse methods provide better results specifically at shallow impact angles (3). Furthermore, a recent study (12) has highlighted that the bullet's caliber and surface type also play a major role in providing accurate and repeatable results when the ellipse method is used. Another study (7) has highlighted that bullet impact marks on sheet metal have

1  
2 characteristic error patterns from low- to high-impact angles and that the ammunition type has a  
3 significant effect on the error pattern.  
4  
5

6  
7  
8 In this context, a recent bullet ricochet study has demonstrated the dimensional relationship  
9 between angles of incidence and different measurements of AK bullet holes when AK bullets  
10 (7.62 x 39 mm BALL/FMJ/ Chinese) ricochet off 1 mm sheet metal (11). The length of the bullet  
11 holes, length of the lead-in marks, and length of the first heads of the double-headed impact  
12 marks are highlighted features in the study, which proved to have consistent relationships with  
13 the angles of incidence during a bullet ricochet event. While highlighting complex behaviours  
14 of ricocheting AK bullets in low-incident angles, the authors emphasise the possibility of reliably  
15 applying the findings of the study to aid AK-related shooting investigations and, in particular, to  
16 extrapolate the incident angles of fired bullets.  
17  
18  
19  
20  
21  
22  
23  
24  
25  
26  
27  
28  
29

30 All of the above studies have emphasised that the knowledge of the impact behaviour of the  
31 specific bullet-substrate interfaces, including the most viable method for estimating the angle of  
32 incidence of that combination, is required to enable successful analysis. This is because the  
33 impact outcome and the accuracy and precision of the selected method depends on many factors.  
34 Therefore, recognising the best method, which provides accurate and precise results for different  
35 bullet target surface combinations, and exploring new and alternative methods for trajectory  
36 determination of the most frequently reported bullet and target surface types have become a  
37 serious concern in the field of shooting reconstructions.  
38  
39  
40  
41  
42  
43  
44  
45  
46  
47  
48  
49

50 This study is designed to better understand the bullet hole characteristics of AK bullets on 1 mm  
51 sheet metal to aid bullet trajectory determination. In an increasing trend, AK rifles discharging  
52 7.62 x 39 mm bullets are regularly reported in assault rifle shooting incidents worldwide, and  
53 flat 1 mm sheet metal is seen in urban environments in different forms, such as vehicle bodies,  
54  
55  
56  
57  
58  
59  
60

1  
2 partitioning, house walls, roofs, electronic equipment, and storage equipment. The AK rifle's  
3 recent increasing worldwide popularity as the deadliest rifle used in crime scenes is due to many  
4 factors, such as the AK's availability, cheap price, reliability, and illegal proliferation.  
5  
6 Consequently, in the field of shooting investigations, there will be a high demand for  
7 experimental data on these rifles. In view of this, further exploration into how such bullet holes  
8 on sheet metal can best be used for trajectory determination efforts during scene reconstructions  
9 is considered a contemporary imperative.  
10  
11  
12  
13  
14  
15  
16  
17  
18

19 The study is also designed as a follow-up and continuation of the bullet ricochet study on the  
20 same bullet and target combination (11) to see whether the different numerical relationships  
21 observed with the AK bullet hole defects and angles of incidence during the said study are  
22 noticeable when AK bullets perforate 1 mm sheet metal. The study also aims to understand how  
23 the bullet hole characteristics can best be used for AK-related trajectory determination in  
24 shooting reconstructions.  
25  
26  
27  
28  
29  
30  
31  
32  
33

### 34 **Materials and Methodology**

35  
36 An AK-family assault rifle (Type 56 – MK II) was fired at 1 mm thick zinc-coated automotive  
37 steel metal sheets, held over a range of angles (15–90 degrees) and placed at a range of 10 metres.  
38  
39 A specially designed target tray held the sheet metal at the required angles, and the rifle was  
40 fixed to a stable and levelled firing platform to allow the gun to be fired horizontally each time.  
41  
42 The level of the barrel was set exactly horizontally to the ground using a level and was checked  
43 regularly between firings. The height of the barrel (from the muzzle end to floor level) was 1.4  
44 m, and the impact point of the target surface was set to align with the barrel height. The horizontal  
45 bars of the target frame and firing platform were parallel to the ground, and the level was  
46 regularly checked between shots.  
47  
48  
49  
50  
51  
52  
53  
54  
55  
56  
57  
58  
59  
60

1  
2 Sheet metal samples of 45 x 45 cm were placed in the target tray (sheet metal samples were  
3  
4 firmly fitted to the frame of the target tray using four bolts and not supported directly  
5  
6 underneath). The angles of the target tray could be adjusted from 0 to 90 degrees. Once the angles  
7  
8 were set, the target tray could be locked using two butterfly nuts to ensure no changes to the set  
9  
10 angle during firing. An inclinometer was placed on the surface of the sheet metal and was used  
11  
12 to set the angles of the target tray. The inclinometer precision was  $\pm 0.15$  degrees. Ten shots  
13  
14 were fired at each angle, starting at 90 degrees and decreasing in 10-degree regular intervals  
15  
16 down to 20 degrees until the critical angle was reached (15 degrees with all 10 shots perforated  
17  
18 was also included). Before each shot, the horizontal and vertical levels of the target holders and  
19  
20 the angle of the sheet metal samples were checked and confirmed using an inclinometer. The  
21  
22 bullets used were 7.62 x 39 mm standard Chinese BALL ammunition with mild steel  
23  
24 cores/copper jacket and a steel case. Since a simultaneous ricochet and perforating phenomenon  
25  
26 of AK bullets had previously been reported at low-incident angles (11), two hardboard paper  
27  
28 screens were also fixed at the edge of the target tray to capture the impacts of any ricocheting  
29  
30 and perforating parts of bullets. Perforated bullets were soft-captured for further analysis using  
31  
32 a box filled with Kevlar. The velocities of all fired bullets were measured using a chronograph.  
33  
34 Shot numbers and angles were marked on the sample sheets using a permanent marker pen. The  
35  
36 experimental arrangement and experimental apparatus are shown in Figure 1.  
37  
38  
39  
40  
41  
42  
43

44 The full lengths of any bullet holes and impact marks were measured using a digital caliper,  
45  
46 which was zeroed before each measurement was taken. The bullet impact defects observed at  
47  
48 each angle of entry were noted and photographed. After bullets perforated the sheet metal, slight  
49  
50 deflections from the original trajectories were observed, based on the secondary impact marks  
51  
52 on the hardboard paper screen 2 (see Figure 1). Therefore, a method to calculate the bullet's  
53  
54 deviation was designed based on the primary and secondary bullet defects on the sheet metal and  
55  
56  
57  
58  
59  
60



1  
2  
3 hardboard paper screen 2. The method for calculating the bullet's deviation is shown in Figure  
4  
5 2.

## 10 **Results and Discussion**

11  
12  
13 The average recorded velocity of the bullets fired was 714.4 m/s with 7.6 m/s standard deviation.

14  
15  
16 The critical angle at which the bullets transitioned from perforating the metal sheet to ricochet  
17  
18 occurred at 20 degrees. However, the phenomenon observed at 20 degrees did not showcase true  
19  
20 ricochets, and all impacting bullets displayed mixed behaviour of half ricochet/half perforation,  
21  
22 with the separated jackets from the bullet ricocheting and the deformed and slightly damaged  
23  
24 mild steel cores perforating. At 15 degrees, all bullets ricocheted off the sheet metal surfaces.  
25  
26  
27 All results between 15 and 90 degrees were analysed for this study.

### 28 29 30 *Shape and size of the bullet impact marks on sheet metal*

31  
32  
33 Bullet impact marks at 90 degrees were circular, and as the angle of incidence decreased, the  
34  
35 marks became increasingly elliptical in shape. Figure 3 illustrates the different shapes and  
36  
37 systematic expansion of the bullet holes, with decreasing angles of incidence. The average size  
38  
39 of the bullet hole produced at 90 degrees was 7.63 mm with a 0.24 mm standard deviation. It  
40  
41 was interesting to notice that seven out of 20 bullet holes had lower diameters than the original  
42  
43 7.62 mm diameter of AK bullets (7.54 mm, 7.32 mm, 7.45 mm, 7.21 mm, 7.33 mm, 7.61 mm,  
44  
45 7.53 mm) as "bullet holes caused by high-velocity bullets in sheet metal will typically leave a  
46  
47 slightly larger hole than the causative bullet" (2). However, the mean bullet hole diameter  
48  
49 reported here is slightly larger than the bullet diameter.  
50  
51  
52

### 53 54 55 *Bullet deviation from its original axis*

1  
2  
3 The bullet's original direction before contact with the sheet metal was observed to change after  
4 perforation. A consistent downward or upward deviation of approximately 1 degree was  
5 observed in all bullets perforating the sheet metal from 40 to 90 degrees, while a different  
6 phenomenon of half ricochet and half perforation was observed from 15 to 30 degrees. In 15, 20  
7 and 30 degree incident angles, AK bullets started to fragment upon impact, making the bullet's  
8 core and jacket separate. The cores of the bullets were always seen perforating the sheet metal  
9 underneath while the fragmented jacket was ricocheting. This was confirmed through the finding  
10 of the separated cores and jacket parts in the Kevlar soft-capture boxes in each repetition. Within  
11 this incident angle range, the hardboard paper screens had multiple holes produced by fragments  
12 from sheet metal and the bullets; hence, it was difficult to determine the exact secondary impact  
13 hole. Figure 4 shows some of the ricocheted jackets and perforated cores collected during the  
14 experiment.

15  
16  
17  
18  
19  
20  
21  
22  
23  
24  
25  
26  
27  
28  
29  
30  
31 This phenomenon had also been reported during the previous study (11) when AK bullets  
32 ricocheted off 1 mm sheet metal from 8 to 20 degree incident angles; however, was not measured  
33 or evaluated. Further, a triangular-shaped jacket portion of the bullet had been observed  
34 ricocheting during the ricochet study (11), and a different fragmentation phenomenon was  
35 observed in collected ricocheted jackets in this study (Figure 4: left picture). Two different types  
36 of ammunition used in the studies (lead cores and mild steel cores) may have caused this  
37 difference. A graphical illustration of the recorded vertical deviations of the bullets and bullet  
38 cores is given in Figure 5.

39  
40  
41  
42  
43  
44  
45  
46  
47  
48  
49  
50 Although lateral deviation of bullets during bullet ricochet events is explained in a few sources  
51 (13, 2, 8, 14), numerical values on the post-perforation deviation of bullets or main fragment  
52 have not been reported in the literature reviewed for this study. The approximate 1 degree upward  
53 or downward deviation of the bullets from the angles of incidence of 40 to 90 degrees is more

1  
2 likely to have occurred as a result of the interaction interface of the bullet and the sheet metal  
3 rather than to be an experimental error, since there is clear repeatability in the data collected,  
4 with low associated standard deviations.  
5  
6  
7

8  
9  
10 However, from a trajectory reconstruction point of view, the phenomenon observed below 40  
11 degrees (left of the green line in Figure 5) should be noted as significant. A shot fired into these  
12 surfaces at low angles may cause a significant deviation in the bullet's path and consequently  
13 lead to major errors in estimated trajectories using trajectory rods, lasers, or strings, all of which  
14 tend to operate on the general assumption that the pre-impact trajectory is maintained when  
15 bullets pass through intermediate objects. Possible confusions and faulty conclusions based on  
16 the impacts of deviated cores and impact marks caused by ricocheting jackets on nearby surfaces  
17 in real scenes are also noteworthy to highlight here, as such a phenomenon can lead to severe  
18 misinterpretation during scene reconstructions of what exactly happened. Therefore, the  
19 trajectory rod method is not recommended to use when the angles of incidence of AK bullets on  
20 sheet metal are observed to be very low (up to 40 degrees). Such low-angled impacts may be  
21 identified from the double-headed feature of the bullet hole or the expanding length of the bullet  
22 holes (a length exceeding the overall length of approximately 15 mm is not recommended), as  
23 highlighted in subsequent paragraphs.  
24  
25  
26  
27  
28  
29  
30  
31  
32  
33  
34  
35  
36  
37  
38  
39  
40  
41  
42

#### 43 *Full length of bullet impact mark*

44  
45 A relationship was observed between the full length of the impact marks (including the lead-in  
46 mark; see Figure 6) and the bullet's angle of incidence. The full length of the impact marks was  
47 observed to systematically increase with a decreased angle of incidence for the bullets. The  
48 change observed in average full lengths of impact marks below 30 degrees was particularly  
49 significant and was also where the bullets started to showcase a complex behaviour, with the  
50 creation of a "double-headed impact mark", as observed by a previous study (11). A summary  
51  
52  
53  
54  
55  
56  
57  
58  
59  
60

1  
2 of the measured full lengths of bullet impact marks and a graphical illustration of the same are  
3 shown in Table 1 and Figure 7 respectively.  
4  
5

6  
7 The trendline equation in Figure 7 seems to suggest a clear inverse law here, with the exponential  
8 power being very close to -1 (-0.9725). It also enhances the significance value of these results  
9 for use in shooting reconstruction efforts, especially as alternative and confirmative methods for  
10 bullet trajectory determination of this bullet target combination.  
11  
12  
13  
14  
15

16  
17 The average (mean) differences of the estimated incident angles using the length of the bullet  
18 holes obtained in this study were compared with the average differences of results obtained  
19 through the probing method and ellipse method (using Cloud Compare Software (15)). The  
20 summary of the results obtained is given in Figure 8.  
21  
22  
23  
24  
25

26  
27 The new method for estimating trajectories based on the size of the bullet holes has proven to  
28 have the most accurate estimation of the incident angle of AK bullets on sheet metal within the  
29 accepted error margin of 5 degrees in bullet trajectory determinations. The results further  
30 highlight that the ellipse method is not a reliable method for this bullet and target combination.  
31  
32 As a previous study (3) has highlighted that the lead-in method is not viable for estimating the  
33 angles of incidences of bullets that perforated single sheet metal surfaces, the new method can  
34 be introduced as a viable and non-destructive method to estimate the angles of incidences of AK  
35 bullets fired into single sheet metal surfaces. As bullets fired into sheet metal objectives  
36 sometimes deviate from their main axis due to interacting with intermediate objectives inside  
37 (i.e., car doors, electronic equipment), the new method can also be used as a confirmatory method  
38 to understand the angles of incidences of bullets before the probing method is employed.  
39  
40  
41  
42  
43  
44  
45  
46  
47  
48  
49  
50  
51

#### 52 53 *Double-headed impact mark* 54

55 The appearance of the primary bullet impact defect expanded from a round shape to an elliptical  
56 bullet hole with a visible lead-in mark as the angle of incidence decreased from 90 to 40 degrees.  
57  
58  
59  
60

1  
2  
3 At 30, 20 and 15 degrees, a special impact feature with two heads was observed. This impact  
4  
5 feature, known as a “double-headed impact mark”, was first reported when AK bullet ricochets  
6  
7 on 1 mm sheet metal were analysed for impact angles over the range of 8 to 21 degrees, in which  
8  
9 the critical angle was reported to be “around 20-degrees”(11). Based on the observation of this  
10  
11 unique feature of up to a 30 degree incident angle in this experiment, this further confirms that  
12  
13 the double-headed impact mark is a common observation for AK bullets perforating 1 mm sheet  
14  
15 metal in low angles, which extends the range of angles over which the phenomenon has been  
16  
17  
18  
19 seen.

20  
21 A strong relationship between the lengths of the first head of the double head impact mark and  
22  
23 the incident angles of bullets was also observed. This relationship has been previously reported  
24  
25 in the AK bullet ricochet study (11). An example of a double-headed impact mark observed in  
26  
27 the experiment for 30 degrees is shown in Figure 9 (left), with a similar impact mark reported in  
28  
29 the previous AK bullet ricochet study (right).  
30  
31

32  
33 Additionally, the average dimensional values for the first heads of the double-headed impact  
34  
35 marks in this study, with comparable values from the previous study (11), have revealed a  
36  
37 connecting and continuing pattern, from AK bullet ricochet to perforation. A graphical  
38  
39 illustration highlighting the connecting pattern of the result on measurement lengths of the first  
40  
41 heads of two studies is shown independently and collectively in Figure 10 for better  
42  
43 understanding. The overall results demonstrate a strong inverse relationship between the two  
44  
45 factors, with the trend line power being extremely close to -1 (0.9914).  
46  
47  
48  
49

50  
51 It is also important to highlight the data consistency observed here between the two data sets in  
52  
53 Figure 10 (when taken independently and as a full set ), despite the two experiments being  
54  
55 conducted at different locations using two different types of the 7.62 mm x 39 mm caliber  
56  
57 ammunition and different average velocities. The previous ricochet experiment was conducted  
58  
59  
60

1  
2 using Siberian 7.62 mm x 39 mm BALL FMJ bullets with a lead core (average velocity 760 m/s),  
3  
4 and this study was conducted using Chinese 7.62 mm x 39 mm BALL FMJ bullets with a brass  
5  
6 case and mild steel core (average velocity 714.4 m/s). Additionally, a 7.62 mm test barrel had  
7  
8 been used for the ricochet study, while a mounted, Type 56-MK II assault rifle was used for the  
9  
10 current study. The slight overlapping and deviations of individual curves in the two experiments  
11  
12 and the difference of the error bar limits may have occurred due to these differences. However,  
13  
14 only 1 degree critical angle variations in the two studies and the constant nature of data and  
15  
16 reproducibility demonstrate the usability of such results to estimate the angles of incidences of  
17  
18 fired AK bullets into 1 mm sheet metal.  
19  
20  
21  
22  
23

## 24 **Conclusion**

25  
26 This study was conducted to better understand the bullet hole characteristics and related  
27  
28 phenomena of AK bullets on 1 mm sheet metal for bullet trajectory reconstruction. AK bullets  
29  
30 (7.62 mm x 39 mm) were fired into 1 mm sheet metal placed at different angles from 15 to 90  
31  
32 degrees.  
33  
34  
35

36  
37 The average diameter reported for the bullet hole at the 90 degree incident angle was 7.63 +/-  
38  
39 0.24 mm. The study revealed that bullet hole lengths increased as the angle of incidence  
40  
41 decreased from 90 to 15 degrees, demonstrating an inverse relationship. To date, this relationship  
42  
43 has not been widely used as a method to estimate the angles of incidence of fired bullets and has  
44  
45 not proven viable to use with the same bullet target combination in actual crime scenes. A  
46  
47 comparison of the estimated incident angles from bullet holes with commonly used ellipse and  
48  
49 probing methods suggests additional reliability and the accuracy of these results over the other  
50  
51 two methods and the usability of the size of the AK bullet impact mark on sheet metal as a new,  
52  
53 alternative or confirmatory method to understand a bullet's incident angle.  
54  
55  
56  
57  
58  
59  
60

1  
2  
3 The double-headed impact mark was observed at incident angles of 15 to 30 degrees and the  
4  
5 length of the first head was shown to have a strong relationship with the angles of incidence for  
6  
7 the fired bullets, and this was once again identified as a prominent feature of such impacts at a  
8  
9 wider range of angles than previously reported (11). This now means the phenomenon exists for  
10  
11 AK bullets impacting 1 mm sheet metal at angles of up to 30 degrees during AK bullet ricochet  
12  
13 and perforation events. Since low-angle bullet perforation on flat sheet metal is commonly seen  
14  
15 in urban environments (i.e., vehicles, signboards, partitions, steel furniture enclosures etc.), the  
16  
17 strong inverse relationships highlighted in this work between dimensions of the double-headed  
18  
19 impact mark on 1 mm sheet metal and the angles of incidence of AK bullets may present a viable  
20  
21 alternative method to interpret bullets' angles of incidence in a different way to existing  
22  
23 trajectory identification methods.  
24  
25  
26

27  
28 Trajectories for the deviated cores after perforation demonstrated an upward or downward  
29  
30 deviation of 1 to 5 degrees from the bullet's primary trajectory, being consistently around 1  
31  
32 degree between 40 to 90 degrees and then increasing to 5 degrees as the angle of incidence  
33  
34 decreased from 40 to 20 degrees, with the half ricochet and half perforation phenomenon.  
35  
36 Although an approximately 5 degree error cone is acceptable in bullet trajectory determination  
37  
38 (16), the reported significant variations for the perforated cores are important to notice to avoid  
39  
40 possible confusions and faulty conclusions based on the impacts of deviated cores and impact  
41  
42 marks caused by ricocheting jackets on nearby or secondary surfaces in real scenes. Based on  
43  
44 the observations, the trajectory rod method is not recommended to use with 1 mm sheet metal  
45  
46 surfaces for very low-angled impacts (up to 40 degrees) due to the production of possible  
47  
48 multiple perforation sites by fragmented parts of the bullets and surface and production of large  
49  
50 and irregular-shaped secondary impact marks where the exact positioning of the trajectory rod  
51  
52 is difficult.  
53  
54  
55  
56  
57  
58  
59  
60

1  
2 The comparative results from the trajectory rod method and ellipse method also highlight that  
3 the ellipse method is not viable for this bullet target combination and that the probing method  
4 provides the most accurate results. However, the new method has an advantage over the probing  
5 method, as it can be reliably employed even when there is a single perforated surface.  
6  
7  
8  
9

10  
11  
12 The strong relationships demonstrated in this study suggest there is scope to extend this work  
13 further to see whether similar phenomena are common to other sheet metal thicknesses with this  
14 same AK ammunition or alternative ammunition and gun types with the same metal substrate.  
15  
16  
17

18  
19 Based on the strong relationships identified in this study between the angles of incidence and the  
20 marks from AK bullets on sheet metal, the authors of this study are in the process of designing  
21 an image analysis based software tool that can instantly scan an AK bullet hole on sheet metal  
22 to estimate the causative bullet's incident angle.  
23  
24  
25  
26  
27  
28  
29  
30

### 31 **Acknowledgements**

32  
33 The research was performed at the Centre for Defence Research and Development, Ministry of  
34 National Security, Disaster Management and Homeland Affairs, Sri Lanka as a part of a pilot  
35 study for a research project on “An image analysis device to calculate the angle of approach of  
36 AK bullets on 1 mm sheet metal”.  
37  
38  
39  
40  
41  
42  
43  
44  
45  
46  
47  
48  
49  
50  
51  
52  
53  
54  
55  
56  
57  
58  
59  
60



## References

1. Bureau of Criminal Apprehension. Shooting scene reconstruction. 2019.  
<https://dps.mn.gov/divisions/bca/bca-divisions/forensic-science/Pages/forensic-programs-crime-scene-ssrecon.aspx>. Accessed 2020 January 28.
2. Haag MG, Haag LC. Shooting incident reconstruction. 2nd ed. San Diego, CA: Elsevier Publishers; 2011. p. 117,177.
3. Mattijssen EJAT, Kerkhoff W. Bullet trajectory reconstruction – Methods, accuracy and precision. *Forensic Sci Int*. 2016;262:204–11. [doi.org/10.1016/j.forsciint.2016.03.039](https://doi.org/10.1016/j.forsciint.2016.03.039).
4. Parkinson GA. Stringing a crime scene to determine trajectories. *J Forensic Identif*. 2003;53(4):435–43.
5. Vecellio M. Laser visualization of bullet paths. *Evidence Technology Magazine*. 2013.  
<http://www.nxtbook.com/nxtbooks/evidencetechnology/20130708/index.php?startid=14#/16>.  
Accessed 2021 January 10.
6. Nattapontangtawee, Theerayutmaneeruangrit, Weerachaiphutdhawong. ICP and bullet damage analysis on sheet-metal and wooden boards. *Chem Sci Trans*. 2015;4(3):668–71. doi: 10.7598/cst2015.1047.
7. Liscio E, Imran R. Angle of impact determination from bullet holes in a metal surface. *Forensic Sci Int*. 2016;317:110504. [doi.org/10.1016/j.forsciint.2020.110504](https://doi.org/10.1016/j.forsciint.2020.110504).
8. Mattijssen EJAT, Kerkhoff W, Bestebreurtje ME. Bullet trajectory after impact on laminated particle board. *J Forensic Sci*. 2017;63(5):1374–82. <https://doi.org/10.1111/1556-4029.13717>.
9. Eksinitkun G, Phungyimnoi N, Poogun S. The analysis of the perforation of the bullet 11 mm. on the metal sheets. *J Phys Conf Ser*. 2019;1380:012085.

- 1  
2  
3 10. Siso R, Bokobza L, Hazan E, Gronspan A. Firing distance estimation from bullet impact  
4 characteristics on thin sheets metal. *AFTE Journal*. 2016;48(3):178–84.  
5  
6  
7 11. Nishshanka B, Shepherd C, Paraniurubasingam P. A forensic based empirical study to analyse  
8 the ricochet behaviour of AK bullets (7.62x 39mm) on 1 mm sheet metal. *Forensic Sci Int*.  
9 2020;312:110313. [doi.org/10.1016/j.forsciint.2020.110313](https://doi.org/10.1016/j.forsciint.2020.110313).  
10  
11  
12  
13  
14 12. Walters M, Liscio E. The accuracy and repeatability of reconstructing single bullet impacts  
15 using the 2D ellipse method. *J Forensic Sci*. 2020;65(4):1120–7. [doi.org/10.1111/1556-](https://doi.org/10.1111/1556-4029.14309)  
16 [4029.14309](https://doi.org/10.1111/1556-4029.14309).  
17  
18  
19  
20  
21  
22  
23 13. Jauhari M. Bullet ricochet from metal plates. *J Crim Law Criminol*. 1970;60(3):387–94.  
24  
25  
26  
27 14. Wilgus G, White JB, Berry J. An investigation of the effects of laminated glass on bullet  
28 deflection. *J Forensic Identif*. 2013;63(3):226–32.  
29  
30  
31  
32  
33 15. CloudCompare Software. 2020. <https://www.danielgm.net/cc/>. Accessed 2019 February 20.  
34  
35  
36 16. Hueske EE. Bullet trajectory analysis using photographs. *Evidence Technology Magazine*.  
37 2016.  
38  
39  
40 [https://www.nxtbook.com/nxtbooks/evidencetechnology/2016spring/index.php?startid=34#/p/](https://www.nxtbook.com/nxtbooks/evidencetechnology/2016spring/index.php?startid=34#/p/34)  
41 [34](https://www.nxtbook.com/nxtbooks/evidencetechnology/2016spring/index.php?startid=34#/p/34). Accessed 2019 February 20.  
42  
43  
44  
45  
46  
47  
48  
49  
50  
51  
52  
53  
54  
55  
56  
57  
58  
59  
60

TABLE 1 Average full length of the impact mark and incident angle of bullets (20 shots)

Angle of Approach (Degrees)	Average Full Length of the Impact Mark (mm)	Standard Deviation (mm)	Remarks
90	7.63	0.24	-
80	7.78	0.22	-
70	7.96	0.26	-
60	8.87	0.31	-
50	9.98	0.6	-
40	12.23	0.44	-
30	17.71	0.55	The basic shape of the impact mark started to change after 40 degrees and "double headed mark" with two heads <u>were</u> observed on sheet metal surface from 30 to 15 degrees.
20	27.99	0.82	
15 (All bullets ricocheted off)	37.96	1.56	

## Figure Legends

FIGURE 1 Experimental arrangement and some of the experiment apparatus

FIGURE 2 The method for calculating the bullet's deviation

FIGURE 3 Different shapes and systematic expansion of the bullet holes with decreasing angles of incidence. The black arrows indicate the bullet's direction of travel and special deformation features observed such as raised collars as seen in 70, 60 and 50 degrees were similarly observed in all bullet holes for respective angles

FIGURE 4 Some of the ricocheted jackets and perforated cores collected during the experiment

FIGURE 5 Angles of incidence for bullets against average deviation of the bullets from 15 to 90 degrees (10 shots for each). The area on the left of the green dotted line indicates the area where a complex behavior of half ricochet and half perforation was observed

FIGURE 6 An illustration of how the measurements were taken, with the bullet originally travelling from right to left

FIGURE 7 Relationship between bullet angle of incidence and the average full length of the bullet impact marks (from 10 shots). At 15 degrees, all bullets ricocheted off sheet metal

FIGURE 8 A comparison between the mean differences of the estimated angles of incidences using three methods (As the incident angles between 5 and 40 degrees had inconsistent results with the fragmentation and complex behaviour, the angles could not be measured using probe method for the evaluation)

1  
2  
3 FIGURE 9 An example of a double-headed impact mark observed in this study at a 20 degree  
4 angle of incidence (left) and a similar impact mark reported during another AK bullet ricochet  
5 study (11) (right). The arrow indicates the direction of the bullet's travel  
6  
7  
8  
9

10 FIGURE 10 A comparison of the dimensional values observed in the first heads of double-  
11 headed impact marks in the experiment (during AK bullet perforation) and results of the ricochet  
12 experiment (11), during another AK bullet ricochet experiment). The critical angle observed  
13 during the current study was 20 degrees and 21 degrees in the previous ricochet study (11). Red  
14 and blue data points with coloured trendlines indicate the results of the two studies and the black  
15 dotted trend line indicates the overall combined results  
16  
17  
18  
19  
20  
21  
22  
23  
24  
25  
26  
27  
28  
29  
30  
31  
32  
33  
34  
35  
36  
37  
38  
39  
40  
41  
42  
43  
44  
45  
46  
47  
48  
49  
50  
51  
52  
53  
54  
55  
56  
57  
58  
59  
60

1  
2  
3  
4  
5  
6  
7  
8  
9  
10  
11  
12  
13  
14  
15  
16  
17  
18  
19  
20  
21  
22  
23  
24  
25  
26  
27  
28  
29  
30  
31  
32  
33  
34  
35  
36  
37  
38  
39  
40  
41  
42  
43  
44  
45  
46  
47  
48  
49  
50  
51  
52  
53  
54  
55  
56  
57  
58  
59  
60

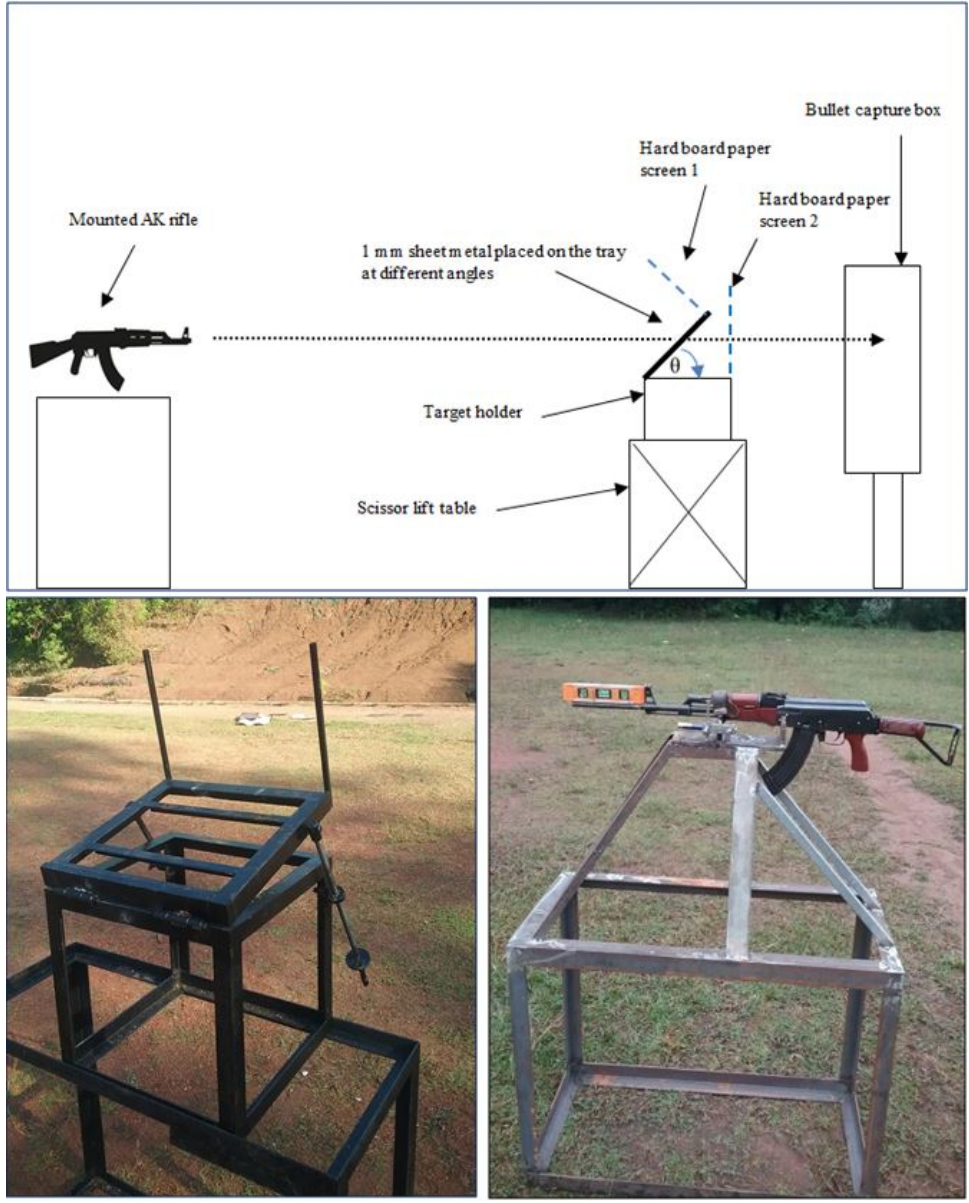
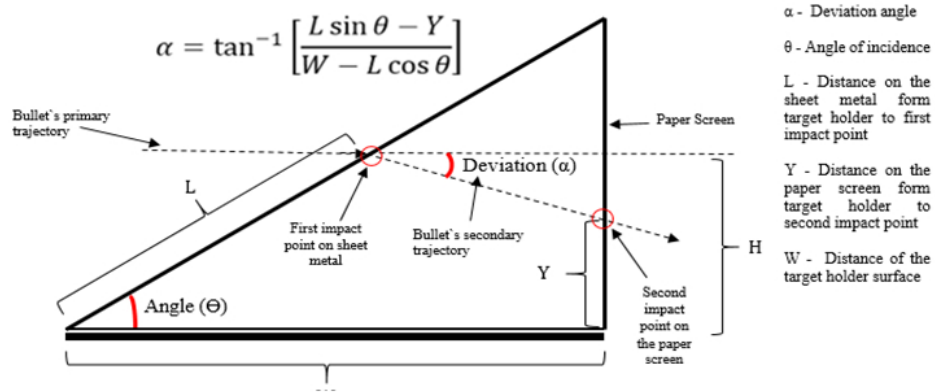


FIGURE 1 Experimental arrangement and some of the experiment apparatus



26  
27  
28  
29  
30  
31  
32  
33  
34  
35  
36  
37  
38  
39  
40  
41  
42  
43  
44  
45  
46  
47  
48  
49  
50  
51  
52  
53  
54  
55  
56  
57  
58  
59  
60

FIGURE 2 The method for calculating the bullet's deviation

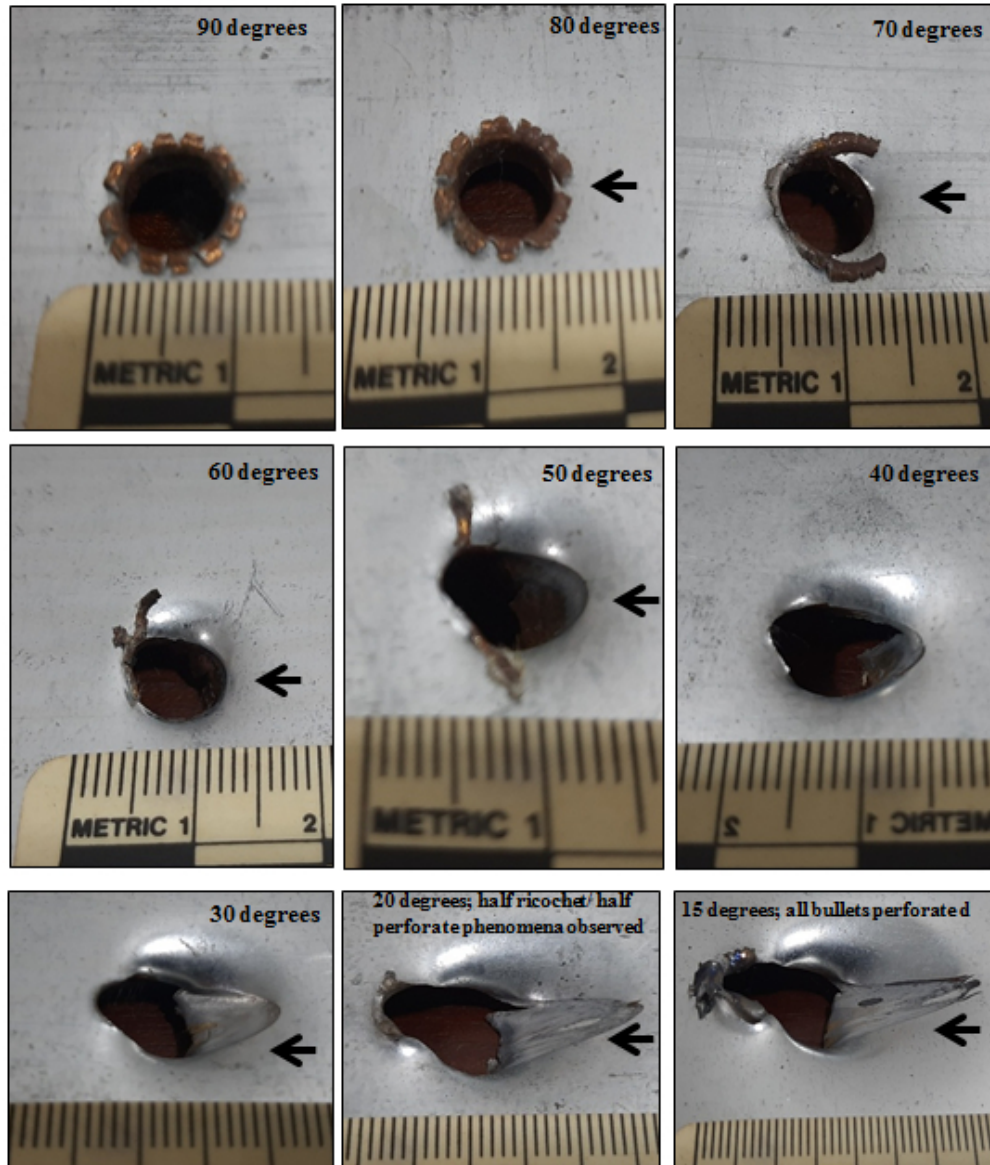


FIGURE 3 Different shapes and systematic expansion of the bullet holes with decreasing angles of incidence. The black arrows indicate the bullet's direction of travel and special deformation features observed such as raised collars as seen in 70, 60 and 50 degrees were similarly observed in all bullet holes for respective angles





FIGURE 4 Some of the ricocheted jackets and perforated cores collected during the experiment

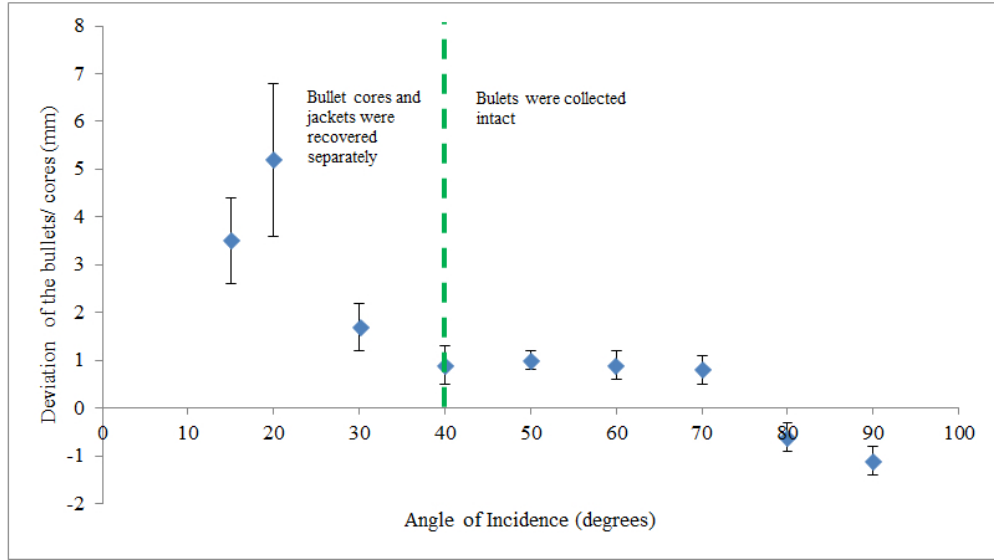


FIGURE 5 Angles of incidence for bullets against average deviation of the bullets from 15 to 90 degrees (10 shots for each). The area on the left of the green dotted line indicates the area where a complex behavior of half ricochet and half perforation was observed

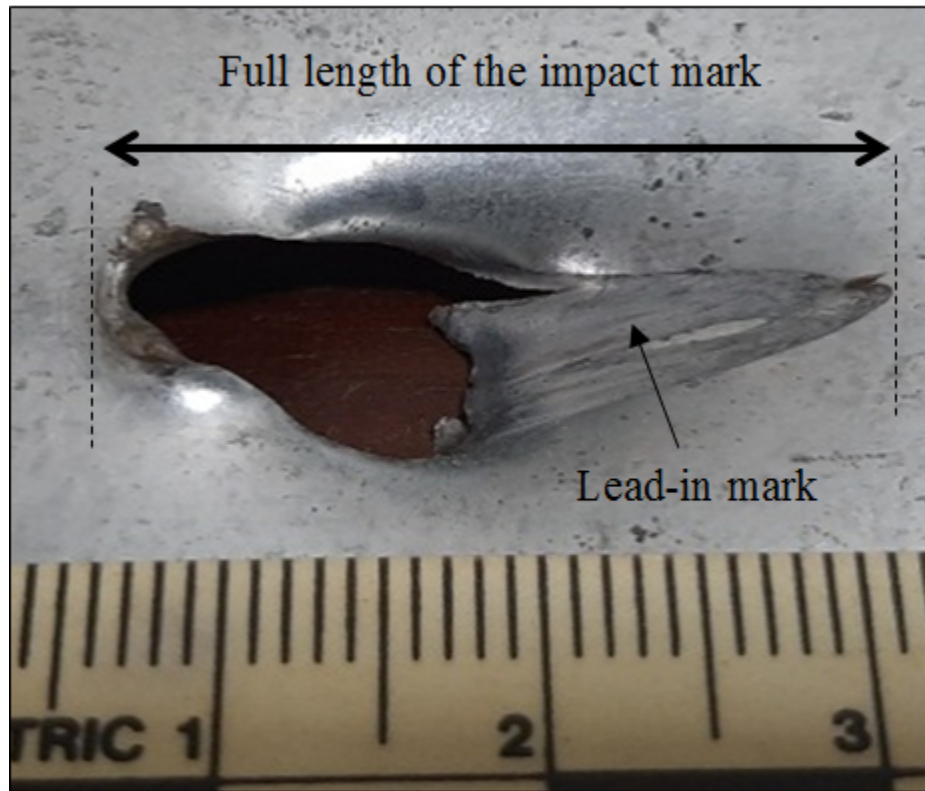


FIGURE 6 An illustration of how the measurements were taken, with the bullet originally travelling from right to left

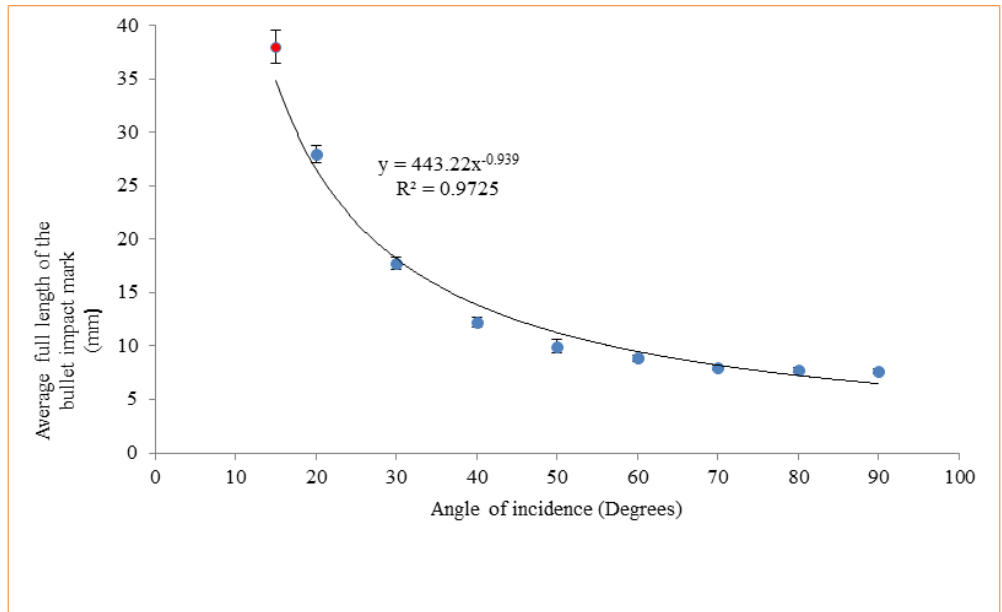


FIGURE 7 Relationship between bullet angle of incidence and the average full length of the bullet impact marks (from 10 shots). At 15 degrees, all bullets ricocheted off sheet metal

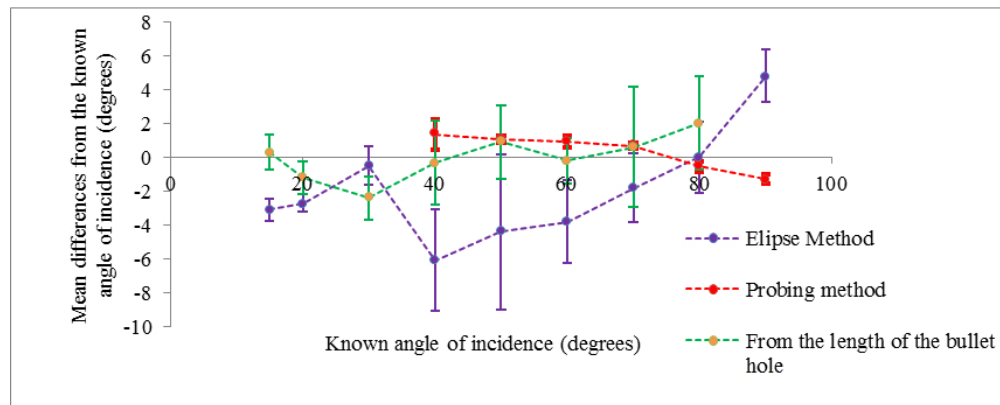


FIGURE 8 A comparison between the mean differences of the estimated angles of incidences using three methods (As the incident angles between 5 and 40 degrees had inconsistent results with the fragmentation and complex behaviour, the angles could not be measured using probe method for the evaluation)

1  
2  
3  
4  
5  
6  
7  
8  
9  
10  
11  
12  
13  
14  
15  
16  
17  
18  
19  
20  
21  
22  
23  
24  
25  
26  
27  
28  
29  
30  
31  
32  
33  
34  
35  
36  
37  
38  
39  
40  
41  
42  
43  
44  
45  
46  
47  
48  
49  
50  
51  
52  
53  
54  
55  
56  
57  
58  
59  
60

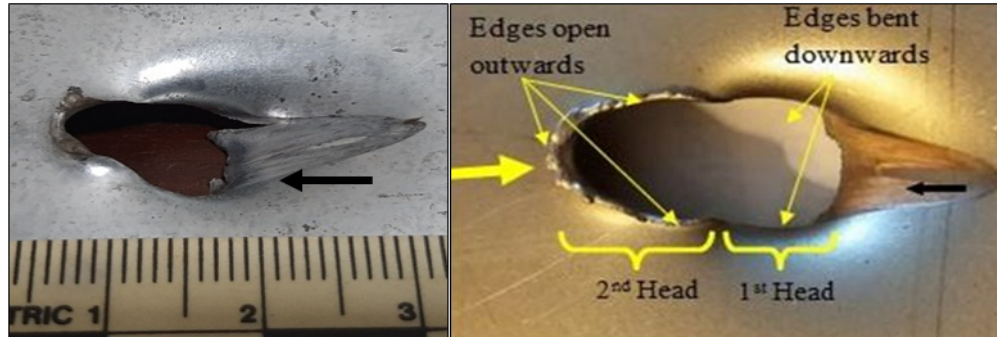


FIGURE 9 An example of a double-headed impact mark observed in this study at a 20 degree angle of incidence (left) and a similar impact mark reported during another AK bullet ricochet study (11) (right). The arrow indicates the direction of the bullet's travel

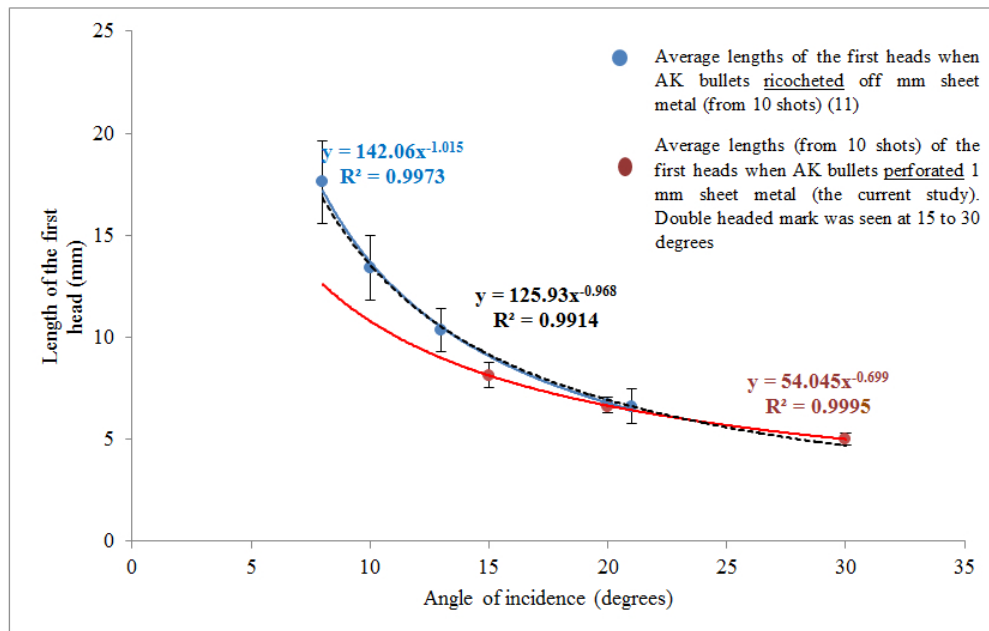


FIGURE 10 A comparison of the dimensional values observed in the first heads of double-headed impact marks in the experiment (during AK bullet perforation) and results of the ricochet experiment (11), during another AK bullet ricochet experiment). The critical angle observed during the current study was 20 degrees and 21 degrees in the previous ricochet study (11). Red and blue data points with coloured trendlines indicate the results of the two studies and the black dotted trend line indicates the overall combined results