



Kent Academic Repository

Rodríguez De Rivera, Óscar and McCrea, Rachel S. (2021) *Removal modelling in ecology: A systematic review*. PLOS ONE, 16 (3). ISSN 1932-6203.

Downloaded from

<https://kar.kent.ac.uk/86961/> The University of Kent's Academic Repository KAR

The version of record is available from

<https://doi.org/10.1371/journal.pone.0229965>

This document version

Publisher pdf

DOI for this version

Licence for this version

CC BY (Attribution)

Additional information

Versions of research works

Versions of Record

If this version is the version of record, it is the same as the published version available on the publisher's web site. Cite as the published version.

Author Accepted Manuscripts

If this document is identified as the Author Accepted Manuscript it is the version after peer review but before type setting, copy editing or publisher branding. Cite as Surname, Initial. (Year) 'Title of article'. To be published in *Title of Journal*, Volume and issue numbers [peer-reviewed accepted version]. Available at: DOI or URL (Accessed: date).

Enquiries


If you have questions about this document contact ResearchSupport@kent.ac.uk. Please include the URL of the record in KAR. If you believe that your, or a third party's rights have been compromised through this document please see our [Take Down policy](https://www.kent.ac.uk/guides/kar-the-kent-academic-repository#policies) (available from <https://www.kent.ac.uk/guides/kar-the-kent-academic-repository#policies>).

RESEARCH ARTICLE

Removal modelling in ecology: A systematic review

Oscar Rodriguez de Rivera ^{*}, Rachel McCrea ^{*}

Statistical Ecology @ Kent, National Centre for Statistical Ecology, School of Mathematics, Statistics and Actuarial Science, University of Kent, Canterbury, United Kingdom

 These authors contributed equally to this work.^{*} O.Ortega@kent.ac.uk

Abstract

Removal models were proposed over 80 years ago as a tool to estimate unknown population size. More recently, they are used as an effective tool for management actions for the control of non desirable species, or for the evaluation of translocation management actions. Although the models have evolved over time, in essence, the protocol for data collection has remained similar: at each sampling occasion attempts are made to capture and remove individuals from the study area. Within this paper we review the literature of removal modelling and highlight the methodological developments for the analysis of removal data, in order to provide a unified resource for ecologists wishing to implement these approaches. Models for removal data have developed to better accommodate important features of the data and we discuss the shift in the required assumptions for the implementation of the models. The relative simplicity of this type of data and associated models mean that the method remains attractive and we discuss the potential future role of this technique.

OPEN ACCESS

Citation: Rodriguez de Rivera O, McCrea R (2021) Removal modelling in ecology: A systematic review. PLoS ONE 16(3): e0229965. <https://doi.org/10.1371/journal.pone.0229965>

Editor: Antoni Margalida, University of Lleida, SPAIN

Received: February 20, 2020

Accepted: January 15, 2021

Published: March 4, 2021

Copyright: © 2021 Rodriguez de Rivera, McCrea. This is an open access article distributed under the terms of the [Creative Commons Attribution License](https://creativecommons.org/licenses/by/4.0/), which permits unrestricted use, distribution, and reproduction in any medium, provided the original author and source are credited.

Data Availability Statement: All relevant data are within the manuscript and its [Supporting information](#) files. Paper is a systematic review and papers included in the bibliography are the object of the analysis. No other data has been used. Prisma diagram has been added, explaining how was the search strategy and the articles have been listed in the manuscript.

Funding: Professor Rachel McCrea EP/S020470/1, EPSRC Mathematical Sciences Prioritisation Panel November 2018. The funders had no role in study

Introduction

Population density, the number of animals per defined area, is commonly used as a simple measure of how an organism interacts with local conditions. If circumstances are undesirable for the species, the density will be low, whereas if conditions are good the density will be high [1].

One of the most interesting problems for the ecologist is the estimation of the density of a particular animal species [2] and a tremendous diversity of techniques are available for estimating the size of populations [3–5]. Despite frequent refinements to make some of the more sophisticated techniques more realistic for particular situations (see for example, [6–10]) the removal method remains exceptionally popular.

Removal (or depletion) sampling is a commonly used method to estimate abundance of animal populations [11–14]. Removal models have been used to estimate population size, not only for many species including birds [15], mammals [15], and fish [16], but also for epidemiological applications [17–19].

design, data collection and analysis, decision to publish, or preparation of the manuscript.

Competing interests: The authors have declared that no competing interests exist.

The classic removal model was introduced by [20] and [21], motivated by a theory developed by [2]. This model relied on the assumption of population closure and constant detection probability, meaning that the animals are assumed to be available for capture with the same probability throughout the study and there are no births, deaths or migration during the study. The basic removal model results in a geometric decline in the expected number of captured individuals over time.

The classic removal model is a special case of capture-recapture models which allow for multiple captures and re-releases of animals during a study. The removal model simply constrains the probability of re-capture to be zero as once an individual is captured it is then removed from the study. This is therefore a constrained version of capture-recapture model M_b , which allows probability of initial capture to vary from the probability of re-capture [6].

Removal models are ideally suited to estimating the number of invasive species as they coincide with desirable management (i.e. the reduction or eradication of populations) [22] and the method has recently been adopted as a conservation management tool for example for mitigation translocations [13, 23]. Models that use data from management actions need to account for variations in removal effort as these data are unlikely to be standardised across events [22]. [24] showed that removal models that account for removal effort are effective at estimating abundance, particularly when removal rates are high.

Overview of the paper

Within this paper we have conducted a systematic literature review of removal modelling in ecology. We describe the methods applied in the systematic review and the aspects of interest. We present the results obtained from the literature analyses, highlighting the key methodological advances which have been made in this field and a review of software which has been used to fit removal models. The paper concludes with a discussion about the future role of removal modelling in ecology.

Materials and methods

Literature search

This systematic review followed the PRISMA (Preferred Reporting Items for Systematic Reviews and Meta-Analyses), statement as a guide [25]. The bibliographic search was performed using the SciVerse Scopus (<https://scopus.com>), ISI Web of Science (<https://webofknowledge.com>), and Google Scholar (<https://scholar.google.com>) databases. Papers published between 1939 and the cut-off date 01 July 2019 with the terms “Removal model” or “Removal method” and “population” in the title, keywords, or abstract were included. Non-English publications, and papers reporting removal methods focused on cleaning procedures were excluded from our search. The process of selecting papers to include in our review started with a screening of the abstract. Articles were excluded if they mentioned the keyword “removal model/method” for justification or discussion without implementing a removal model as part of the study. Thus, only the papers that reported applications, methodological advances of removal models or removal study design were retained for the analysis (Fig 1).

Data analysis

Features and parameters of each study were categorised and compiled into a database of removal model publications. We identified the details that were reported in the 104 reviewed publications and provided a descriptive summary of the essential details that need to be reported in published removal models (see Table 1).

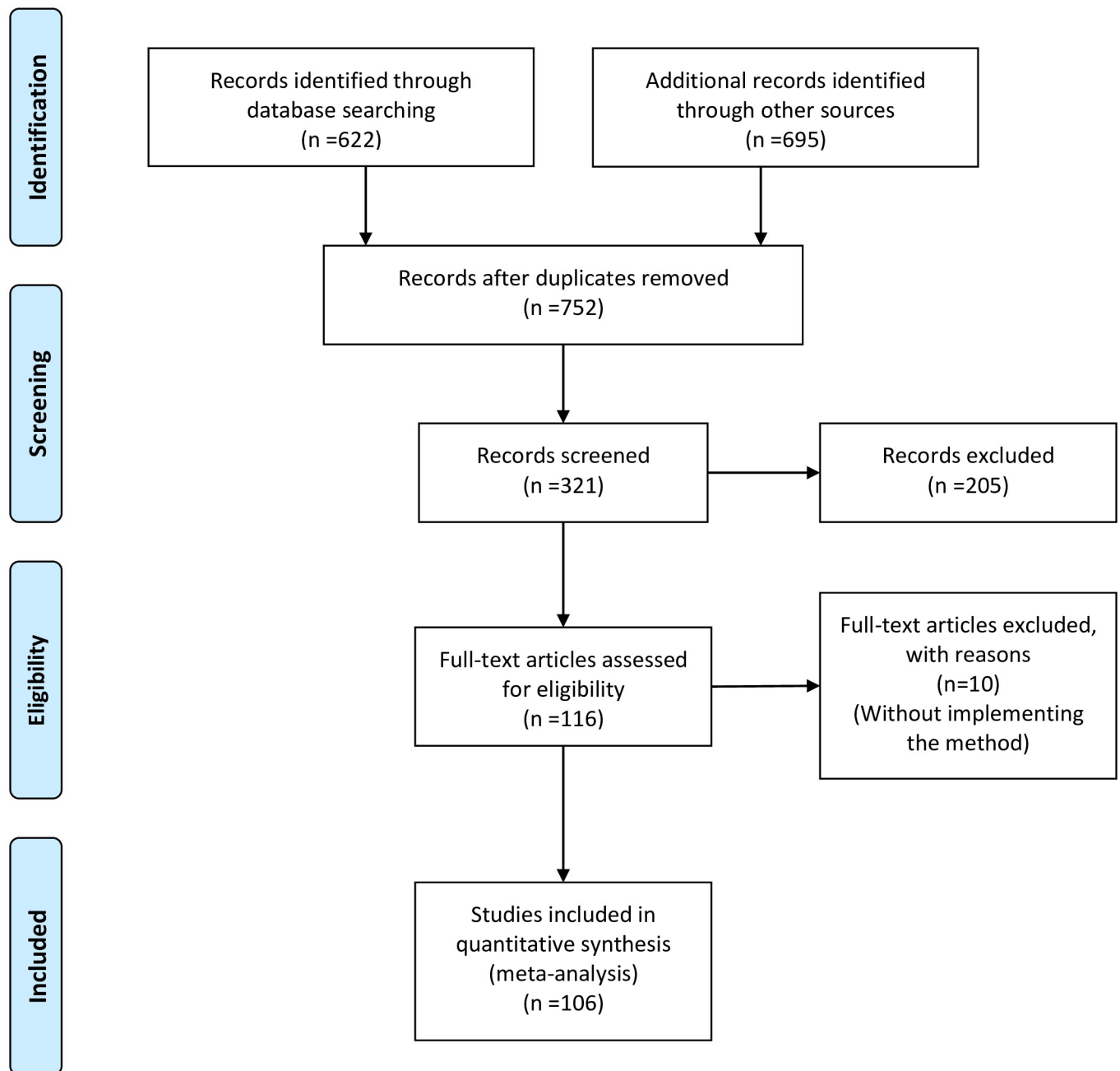


Fig 1. PRISMA flowchart.

<https://doi.org/10.1371/journal.pone.0229965.g001>

Results

Synthesised findings

The reviewed literature was published from 1939 to 2019 and interestingly there have historically been long gaps in publications on this topic. However in recent years there has been a more constant stream of published papers, suggesting a resurgence of interest in the method (Fig 2). It has not been possible to determine if this increase in publications over time is a noteworthy trend or if this is confounded with the general increase in numbers of publications

Table 1. Parameters used to categorise removal models included within the database.

Category	Definition
Year of publication	Year of publication as it appears in the final print
Reference	Author-year citation style
Species	Scientific name of the species included in the analysis
Taxonomic Group	Taxonomic group of the species included in the analysis (Class and Order)
Research goal	Aim of the study (practical or methodological)
Journal	Name of the journal where the study was published
Subject area	Research area of the journal

<https://doi.org/10.1371/journal.pone.0229965.t001>

more generally. If there is a genuine increase in use of this methodology, it is potentially an indication of the role of removal modelling in studies of reintroduction, especially when translocated individuals are removed from endangered populations [26], and the adaptations of model collection protocols to adopt a “removal” design for other data types such as occupancy and distance sampling, as will be discussed in the *Adapting sampling schemes using removal theory* Section of this paper.

A strong representation of removal model publications was observed in the fields of Statistics (29 publications), Fisheries and Ecology journals (20 papers each of the disciplines) and 13 papers published in ornithological journals.

Methodological contributions

Early model developments. The basic principle of the removal method is that a constant sampling effort will remove a constant proportion of the population present at the time of sampling. Thus, if the total population size is N and p denotes the probability of capture of an individual during a particular sampling occasion [21], the expected number of captures will be

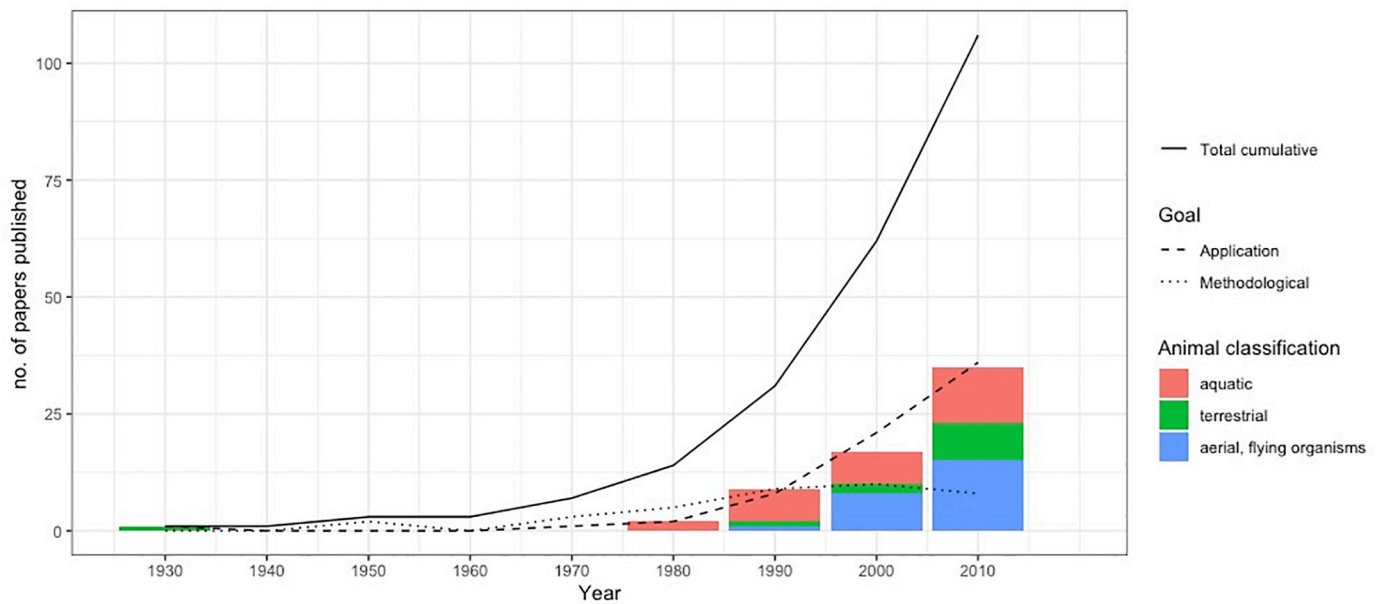


Fig 2. Papers published since 1939 by category. Papers published since 1939 by category (application or methodological) and animal classification ecosystem (aquatic, terrestrial or aerial).

<https://doi.org/10.1371/journal.pone.0229965.g002>

given by: pN , $p(N - pN)$ and $p[N - pN - p(N - pN)]$ for the first, second and third sampling occasions, respectively. Population estimates can be obtained either by plotting catch per unit effort of collection as a function of total previous catch (see for example [2, 27, 28]) or by obtaining maximum likelihood estimates [20, 21, 29, 30].

This model can be formalised by defining the corresponding likelihood function, which we denote by $L(N, p; \text{data})$. Suppose x_t denotes the number of individuals captured at sampling occasion $t = 1, \dots, T$, where T denotes the number of sampling occasions. Using a binomial-formulation, if N_t individuals are still in the study at sampling occasion t , we can define the probability of removing x_t individuals by

$$\Pr(x_t | N_t, p_t) = \binom{N_t}{x_t} p^{x_t} (1 - p)^{N_t - x_t}, \tag{1}$$

where $N_1 = N$ and $N_t = N - \sum_{k=1}^{t-1} x_k$ for $t \geq 2$. Then, the probability of removing x_1, \dots, x_T individuals on occasions $1, \dots, T$ is given by

$$L(N, p; x_1, \dots, x_T) = \Pr(x_1, \dots, x_T | N, p) = \prod_{t=1}^T \binom{N_t}{x_t} p^{x_t} (1 - p)^{N_t - x_t}. \tag{2}$$

Alternatively, we could specify that the N individuals within the population belong to one of $T + 1$ categories: either they are captured on one of occasion $1, \dots, T$, or they could never be captured. Let π_t denote the probability that an individual is captured at occasion t

$$\pi_t = (1 - p)^{t-1} p$$

and let π_0 denote the probability that an individual is never captured:

$$\pi_0 = (1 - p)^T$$

Let n denote the number of individuals never captured, which is given by $n = N - \sum_{t=1}^T x_t$, then the likelihood can be expressed as:

$$L(N, p; x_1, \dots, x_T) = \Pr(x_1, \dots, x_T | N, p) = \binom{N}{x_1, \dots, x_T, n} \prod_{t=1}^T \pi_t^{x_t} \pi_0^n. \tag{3}$$

Early developments of removal models were methodological in nature, to overcome issues which these days are simple to deal with because of computing power. [21] formalised the conditional binomial removal model of [20], providing an asymptotic variance of the abundance estimator. Further, they demonstrated how graphical methods can be used to estimate the parameters of capture and abundance. The likelihood of [20] is weighted with a beta prior by [31], which results in estimators with lower bias and variance. [32] proposed an improved confidence interval for abundance for small populations, whilst [33] proved that the profile log-likelihood for the removal model is unimodal and demonstrated that the likelihood-ratio confidence interval for the population size has acceptable small-sample coverage properties. Similarly, [34] proposes a profile likelihood approach for estimating confidence intervals which showed improved performance.

Validity of model assumptions. The model assumptions required for these early models were very restrictive. Specifically, capture probability, p is assumed to be constant both across all individuals and for each sampling period. [20, 21, 29, 30] have typically included diagnostic tests of assumptions or information on necessary sample sizes in their studies. [14] included a

table of percentage errors to be expected if p varies during sampling. [6] presents a large number of capture-recapture models for closed populations which can be used to estimate abundance. These models accommodated temporal, behavioural and heterogeneity effects in capture probability. However, such generalisations for removal models are not possible as each individual is only captured once. [35], noting that the assumptions of the removal model are often violated, proposed the non-parametric jackknife estimator as an alternative to the removal model.

[31] proposed a standard test that combines testing for arrivals or departures of individuals in the population with testing for equal catchability. The test entails examining trends in the number of removals over time: “When the expected third catch as determined from the first two catches is larger than the observed third catch, emigration or a decreasing probability of capture is indicated. When the opposite condition exists, immigration or an increase in the probability of capture is indicated”. Both the presence and absence of trends yields ambiguous information. Significant trends in the observed data can be caused by the population being open or by unequal catchability. An absence of trends implies either that the assumptions were met or that migration balanced changing probabilities of capture over time.

[36] indicates that unequal catchability tends to be the rule in biological populations. Hence testing for equal catchability is crucial unless one adapts the model. Assuming that equal catchability exists when it does not leads to underestimation of the population size. One procedure that avoids this bias is to identify subsets of the population that are equally catchable and to obtain separate population estimates for each subset [37]. However, because such subdivision of the data greatly decreases the precision of the estimate of the total population size, one should not divide the population unnecessarily if the assumption of equal catchability of all the individuals is met. Therefore, employing a test of equal catchability is a crucial step in any population analysis, even if failure to reject the null hypothesis of equal catchability is an ambiguous result [38].

Two aspects of equal catchability are important for the removal method: equal catchability among groups and equal catchability in all sampling occasions. The first is tested analogously to the test for marked and unmarked captures. If groups with different catchability are identified, separate population size estimates are made for each such group. Individual differences in catchability unrelated to a particular group membership are still possible, but [32] showed that unless these differences are great, their effect on the population estimate is small. [39] investigated the robustness of the removal model to varying behaviours exhibited by fish using simulation.

The second assumption, that catchability remains constant in all sampling periods can be tested by the χ^2 chi-squared test given by [21] or further test given by [6] or [40]. Conclusions drawn from any of these tests will be accurate only if the population remains closed during sampling. Use of a physical barrier around the study site, if possible, can reduce arrivals and departures from the population. Alternatively, independent verification by sampling of marked animals will allow the validity of the assumption of population closure to be investigated [37].

The closure assumption of the removal model has been relaxed in [41], where a model was proposed which allows for population renewal through birth/immigration as well as for population depletion through death/emigration in addition to the removal process. The arrivals of new individuals are modelled by an unknown number of renewal groups and a reversible jump MCMC approach is used to determine the unknown number of groups. Within this paper however it is assumed that any emigration from the population is permanent, and this assumption has been relaxed in [13] which presents a robust design, multilevel structure for removal data using maximum likelihood inference. The implemented hidden Markov model

framework [42], allows individuals to enter and leave the population between secondary samples. A Bayesian counterpart to this robust design model is presented in [43].

Change in ratio, index-removal and catch-effort models. Change in ratio models for population size estimation are closely related to removal models [44, 45]. The model requires that the population can be sub-divided into distinct population classes and the removals will be performed in such a way that the ratio of removals of the sub-populations will be the same as the underlying ratio of the sub-classes within the population.

We can generalise the basic removal model likelihood function of Eq (2) by extending the definition of the parameters and the summary statistics. Specifically, suppose the population is sub-divided into G mutually exclusive and exhaustive groups, and let $N(g)$ denote the unknown abundance of sub-population $g = 1, \dots, G$. We now record $x_t(g)$ individuals of sub-population g being removed at occasion t . The likelihood becomes,

$$L(N, p; x_1(1), \dots, x_T(G)) = \prod_{t=1}^T \prod_{g=1}^G \binom{N_t(g)}{x_t(g)} p^{x_t(g)} (1 - p)^{N_t(g) - x_t(g)}. \tag{4}$$

where $N_1(g) = N(g)$ and $N_t(g) = N(g) - \sum_{k=1}^{t-1} x_k(g)$ for $t \geq 2$.

Catch-effort models are a straight-forward extension of basic removal models which allow capture probability to be related to sampling effort. If catch per unit effort declines with time, then regressing accumulated removals by catch per unit effort allows the starting population to be estimated. This approach however strongly relies on the assumption that if more effort is put into capturing the individuals then a higher proportion of the population will be caught and if this is not satisfied estimators might be appreciably biased [46]. More generally we can extend the removal likelihood of Eq 2 to define a functional form of capture probability:

$$L(N, p_t; x_1, \dots, x_T) = \Pr(x_1, \dots, x_T | N, p) = \prod_{t=1}^T \binom{N_t}{x_t} p_t^{x_t} (1 - p_t)^{N_t - x_t}. \tag{5}$$

where p_t is the capture probability at occasion t which can be linked to a recorded covariate of survey effort, denoted by w_t . Possible forms for the functional form might be $\text{logit}(p_t) = \alpha + \beta w_t$, where α and β are parameters to be estimated, or $p_t = 1 - \exp^{-\theta w_t}$, where θ is a single parameter to be estimated has been used for fisheries applications where w_t denotes the amount of time spent fishing. Alternatively if w_t denotes the number of traps on occasion t and each animal is assumed to be caught in any trap with probability θ , $p_t = 1 - (1 - \theta)^{w_t}$ [5]. Indeed the logistic form of time-dependent capture probability can also be used to model time-variation in capture probability as a function of climatic conditions—see for example [47].

When sampling is with replacement and the sampling efforts are known, [48] modelled the survey sampling process as a Poisson point process where each animal is counted at random with respect to increments of sampling effort and it is assumed that the encounter probabilities for each individual are independent. [49] propose a class of catch-effort models which allow for heterogeneous capture probabilities.

The index-removal method makes use of the decline in a measure of relative abundance due to a known removal. The relative abundance is measured in surveys before and after the removal [50]. [51] proposed an index-removal estimator which accounts for seasonal variation in detection.

Further model developments. [52] demonstrates why auxiliary information is beneficial in removal studies and how to incorporate the extra information into the model and [15] extended the idea of incorporating sub-class level information by proposing a conditional

likelihood approach for incorporating auxiliary variables. Capture probabilities are directly estimated from the conditional likelihood and then abundance estimates can be obtained using a Horvitz-Thompson-like approach.

[53] relaxed the assumption of [20] that traps are not limited in capacity by developing a model in which traps have a reduced capacity to catch once they have been filled. The model assumes that the probability that a specific animal will be caught is proportional to the number of traps that are unoccupied and is often referred to as the proportional trapping model.

Continuous-time removal models were proposed in [54] and the proportional trapping model and continuous time framework were combined in [55]. Further [56] and [57] extended the continuous time proportional trapping model to account for known ratios of sub-populations, thus generalising the change-in-ratio approach.

The theory of analysing multiple types of data in an integrated model within ecology has gained traction in recent years—see for example [58]. Early ideas of combining data types has been found in the removal literature. For example, [37] proposed combining capture-recapture and removal methods for fish removals when sampling is over a limited study period and [59] showed how the proportional trapping model can be extended to include data on non-target species.

Removal models have been presented as a class of hierarchical models, for example [16] present a hierarchical removal model where the sites are assumed to have several distinct sub-sites located spatially. Suppose removals occur at S sites, then records are made of x_{st} , the number of individuals removed from site $s = 1, \dots, S$ at occasion $t = 1, \dots, T$. Following the multinomial form of the likelihood of Eq 3 the probability of observing a sequence of removal counts, $\mathbf{x}_s = \{x_{s1}, \dots, x_{sT}\}$ from site s is given by

$$f(\mathbf{x}_s|N_s, p_s) = \binom{N_s}{x_{s1}, \dots, x_{sT}, n_s} \prod_{t=1}^T \{p_s(1 - p_s)\}^{x_{st}} (1 - p_s)^{n_s}, \tag{6}$$

where N_s denotes the abundance at site s , p_s denotes the capture probability at site s and $n_s = N_s - \sum_{t=1}^T x_{st}$. Within the hierarchical formulation, a probabilistic formulation, defined by density function $g(N|\psi)$, with parameter ψ , specifies the variation in abundance among the S spatially distinct sub-populations in the sample. The site-specific removal counts (Eq 6) can be combined with this model by integrating over possible values of N_s :

$$p(\mathbf{x}_s|\psi, p_s) = \sum_{N_s = \sum_t x_{st}}^{\infty} f(\mathbf{x}_s|N_s, p_s)g(N_s|\psi) \tag{7}$$

The likelihood function is then the product over the observations from the S sites, which assuming independence is defined by

$$L(\psi, p_1, \dots, p_S|\mathbf{x}_1, \dots, \mathbf{x}_S) = \prod_{s=1}^S p(\mathbf{x}_s|\psi, p_s). \tag{8}$$

This model is in fact a multinomial N-mixture model [60] and it has been shown that the removal N-mixture model outperforms the standard N-mixture model using simulation [61]. In practice, a value K has been used in place of the infinite sum in Eq 8 when evaluating the likelihood, however what value of K is appropriate is subjective, and it has been shown there can be some problems with proposed values [62]. [63] has demonstrated that the multinomial N-mixture model for removal data, with negative binomial mixing distribution, has a closed-form likelihood and therefore no numerical approximations are required to fit the model.

Adapting sampling schemes using removal theory. Little work has been found which investigates study design for removal surveys. [64] explored how to optimally allocate total sampling effort for multiple removal sites by maximising the Fisher information of the constant capture probability in the classic removal model. This approach was extended by [65] to allocate effort between primary and secondary sampling occasions within the robust design removal model [13].

An adaptation of survey design for various data types have been augmented with the concept of removal studies. For example, [66] described a time-removal model that treats subsets of the survey period as independent replicates in which birds are ‘captured’ and mentally removed from the population during later sub-periods. This method has been implemented in many subsequent papers, see for example [67, 68]. Further, the removal study design has been proposed for occupancy surveys [69], whereby once a site has been observed as occupied by a species no further surveys are required [70]. [71] developed a spatially explicit temporary emigration model permitting the estimation of population density for point count data such as removal sampling, double-observer sampling, and distance sampling.

Applications

From the papers we reviewed three animal systems were identified (Fig 2) based on the species analysed. Almost half of the applied studies were focused on aquatic ecosystems (marine and fresh water); followed by flying species ($n = 24$) and the rest of the applied studies analysing terrestrial ecosystems. However partitioning the papers by taxonomic group shows that the most common group are bird applications, with 23 papers identified. However, it should be noted that many of these applications use other data types but with adapted sampling design as described earlier [15, 66, 72–92]. Removal methods are clearly important in fisheries research and applications are presented in [93–110]. The papers analysing data from mammals are [2, 6, 22, 111–121]. There are a further six papers analysing data from amphibians: [122–127] and [51] analysed crustaceans. Insects have being analysed in three papers: [128–130] and the less common applications included annelids [131] and Holothuroidea [131]. Three papers presented applications about human disease [17–19] and we included these in our analysis as the aim of the study was to estimate the proportion of an affected population which is an aim in common with ecological applications.

Software

There has been a considerable amount of recent work on developing software to make complex statistical models accessible to the wider ecological community. Much software has been developed to estimate population parameters, including abundance and demographic parameters which account for imperfect detection.

`Capture` [6], was developed to compute estimates of capture probability and population size for closed population capture-recapture data and given the basic removal model is a special case of closed capture-recapture model M_b , `Capture` can be used to fit the geometric removal model. `RCapture` [132] is an R package [133] for fitting models to capture-recapture data. As well as open, closed and robust-design versions of these models based on multinomial likelihoods it is the only software which also implements a log-linear modelling algorithm to estimate the parameters.

`Mark` [134] provides a wide-range of models which can be fitted to more than 65 different data types to estimate several population parameters from the encounters of marked animals. Typically, parameters are obtained by method of maximum likelihood estimation through numerical methods (Newton-Raphson by default). However, an MCMC algorithm has been

added to provide estimates using a Bayesian framework [135]. [136] demonstrate how removal models can be fitted using *Mark* for fisheries data. *RMark* [137] is a software package for the R computing environment that was designed as an alternative interface that can be used in place of *Mark*'s graphical-user-interface to describe models with a typed formula so that models do not need to be defined manually through the design matrix. At the time of writing, *RMark* supports fitting 97 of the 155 models available in *Mark*. R packages *marked* [138] and *unmarked* [139] can also be used to fit the standard removal model and multinomial N-mixture removal model, respectively—see [61]. There is also more specialised software that has arisen for specific applications. *Removal Sampling v2* [140] was designed to estimate population size from removal data and [105] apply this software in order to analyse the effectiveness of stream sampling methods for capturing invasive crayfish.

In addition there is of course well-known software which accommodates the removal study design when fitting models to other data types. In particular *Presence* and *RPresence* [141] for occupancy surveys and *Distance* [142] for distance sampling.

Discussion

Early removal models were simplistic and did not adequately account for potential variability exhibited by the underlying population, however computational and methodological advances give the possibility of more complex models, increasing opportunities, scenarios and accuracy in population estimation. The framework we have presented here is designed to assimilate the use of removal models in order to assist future practitioners in the effective application of removal models.

In our review we have not only presented a list of papers published, differentiating application and methodological advances, but also we have explained the evolution of the model. We have shown how the model has been developed since [2] presented the first case with the evolution in likelihood function from the basic to, for example, that proposed by [49], accounting for heterogeneous capture probability, and more recently the work of [63], theoretically developing the multinomial N-mixture model for removal data.

We have shown how the model assumptions have been adapted, trying to fit the model to different scenarios such as unequal catchability [36], non closure of population [41], heterogeneity across sites [16] and temporary migration [13, 43].

Software development, means that even the complex models described in this paper are accessible to ecologist, meaning that maximum utility can be obtained from removal data.

There are several advantages for non-specialists that wish to apply removal methods: there is a vast array of available models for removal data, with the possibility of selecting the approach where the model assumptions best align with their particular study; there is no restriction to frequentist or Bayesian paradigms; there are several software packages and R code accompanying publications of more recent development to investigate where model assumption might fall short.

In our research we noted in earlier papers a thorough assessment of effects if model assumptions were violated but this rigour was not found in late methodological papers, except in some cases through part of a simulation. New methods developed in this research field have been motivated by unique aspects of particular data sets, and therefore nuances of a case study should be embraced rather than avoided in order to encourage methodological advances.

There is a worldwide interest in identifying tools for effective estimation of species population size and removal models show great potential for application in a wide range of situations, such as species relocation projects and control of exotic invasive species. Even if the original aim of this method was to deplete a species, and some of the studies included in this review use

the method for this purpose [2, 22, 107, 108, 113, 117, 119], most of the studies included in this review were focused on understanding abundance of a particular species due to general interest (for example [78, 81–84, 88, 143]). However, as a management tool it has been used not only to estimate abundance [12, 144], but also, to estimate catchability [35, 66, 68, 109, 118], migration [13, 43, 71, 85], habitat selection [64, 77, 96], endangered species [26, 116, 145], population dynamics [90, 103, 124] or translocation [23]. The potential of removal models to facilitate the estimation of population size in the source population whilst also obtaining a pool of individuals to translocate/reintroduce means that such models will remain important and will likely be further developed.

Species relocations are becoming more prevalent in conservation worldwide [145–147]. They are performed in several countries on an extensive range of species including plants [145], amphibians and reptiles [148, 149]. There are many studies of translocated species and the success of reintroductions, including settlement, survival and reproduction of translocated individuals and their effects on the viability of the reintroduced population [150–155]. However, there is less information regarding the impact of translocations on the source or donor population [156, 157]. These impacts can dramatically affect community stability, which is especially important when translocated individuals are from endangered populations [25]. The main components that can affect the stability of a population are: resistance, that is the ability to maintain its current state when subjected to a perturbation [158]; amplitude, that will determine, after some alteration, if it will return to its original state [159]; elasticity is the property that will determine the rate of return to its initial configuration when the perturbation exceeds the resistance of a community, but not its amplitude [160]. Removal data and removal models may be a powerful tool in order to understand and manage these populations.

As we have shown in this review there are several methodological tools available for practitioners. Although a deep mathematical/statistical knowledge is not needed to apply these methodologies due to the prevalence of software, some assessment should be made of the appropriateness of the statistical models in order to obtain robust estimates of parameters of interest. When removal models were first proposed two core assumptions were key: populations had to be closed and capture probability had to be constant across both time and individuals. We have shown that these assumptions are no longer necessary and more general models exist. However we have to recognise that the ability to estimate all parameters from a very complex model will depend on the data you have available. Substantial numbers of papers exist introducing the concept of removal study design in other types of data collection studies however we have found little work on study design of removal studies themselves, an exception being [64]. Some papers have demonstrated the power of collecting additional information during removal studies, such as sub-group information or spatial information, and it is likely this type of adaptation to basic removal data that will facilitate the fitting of more complex models. Addressing the important aspect of removal study design more generally is an area of active research.

Supporting information

S1 Checklist. PRISMA 2009 checklist.
(PDF)

Author Contributions

Conceptualization: Oscar Rodriguez de Rivera, Rachel McCrea.

Data curation: Oscar Rodriguez de Rivera.

Formal analysis: Oscar Rodriguez de Rivera.

Investigation: Oscar Rodriguez de Rivera, Rachel McCrea.

Methodology: Oscar Rodriguez de Rivera, Rachel McCrea.

Project administration: Oscar Rodriguez de Rivera.

Resources: Oscar Rodriguez de Rivera.

Supervision: Oscar Rodriguez de Rivera, Rachel McCrea.

Validation: Oscar Rodriguez de Rivera, Rachel McCrea.

Visualization: Oscar Rodriguez de Rivera.

Writing – original draft: Oscar Rodriguez de Rivera, Rachel McCrea.

Writing – review & editing: Oscar Rodriguez de Rivera, Rachel McCrea.

References

1. Levin SA. Encyclopedia of biodiversity Elsevier Inc. 2013.
2. Leslie PH, Davis DHS. An attempt to determine the absolute number of rats on a given area. *The Journal of Animal Ecology*. 1939, 8: 94–113. <https://doi.org/10.2307/1255>
3. Seber GAF. *The Estimation of Animal Abundance (2nd Edition)*. The Blackburn Press. 2002.
4. Eberhardt LL. Appraising variability in population studies. *Journal of Wildlife Management*. 1978: 207–238. <https://doi.org/10.2307/3800260>
5. Borchers DL, Buckland ST & Zucchini W. *Estimating Animal Abundance: Closed Populations*. Springer-Verlag, London; 2002
6. Otis DL, Burnham KP, White GC, & Anderson DR. Statistical inference from capture data on closed animal populations. *Wildlife monographs*. 1978, 62: 3–135.
7. Burnham KP & Overton WS. Robust Estimation of Population Size When Capture Probabilities Vary Among Animals. *Ecology*. 1979; 60(5): 927–936. <https://doi.org/10.2307/1936861>
8. Pollock KH. *Capture-recapture models: a review of current methods, assumptions and experimental design (Vol. 1308)*. Raleigh, NC: North Carolina State University; 1980.
9. Pollock KH. A capture-recapture design robust to unequal probability of capture. *The Journal of Wildlife Management*. 1982; 46: 752–757. <https://doi.org/10.2307/3808568>
10. Buckland ST. A modified analysis of the Jolly-Seber capture-recapture model. *Biometrics*. 1980: 419–435.
11. Royle JA & Dorazio RM. Hierarchical models of animal abundance and occurrence. *Journal of Agricultural Biological and Environmental Statistics*. 2006; 11: 249–263. <https://doi.org/10.1198/108571106X129153>
12. Williams BK, Nichols JD & Conroy MJ. *Analysis and Management of Animal Populations*. Academic Press, New York; 2002.
13. Zhou M, McCrea RS, Matechou E, Cole DJ, & Griffiths RA. Removal models accounting for temporary emigration. *Biometrics*. 2019; 75: 24–35. <https://doi.org/10.1111/biom.12961> PMID: 30079539
14. Zippin C. The removal method of population estimation. *The Journal of Wildlife Management*. 1958; 22: 82–90. <https://doi.org/10.2307/3797301>
15. Huggins RM, & Yip PS. Statistical analysis of removal experiments with the use of auxiliary variables. *Statistica Sinica*. 1997: 705–712.
16. Dorazio DM, Jelks HL & Jordan F. Improving removal-based estimates of abundance by sampling a population of spatially distinct subpopulations. *Biometrics*. 2005; 61: 1093–1101. <https://doi.org/10.1111/j.1541-0420.2005.00360.x> PMID: 16401283
17. Hsieh YH, Chen CW, & Lee SM. Empirical Bayes approach to estimating the number of HIV infected individuals in hidden and elusive populations. *Statistics in medicine*. 2000; 19: 3095–3108. [https://doi.org/10.1002/1097-0258\(20001130\)19:22%3C3095::AID-SIM605%3E3.0.CO;2-W](https://doi.org/10.1002/1097-0258(20001130)19:22%3C3095::AID-SIM605%3E3.0.CO;2-W) PMID: 11113945
18. Hsieh YH, Chen CW, Lee SM, Chen YMA, Wu SI, Lai SF, et al. Estimating the Number of HIV-infected gay sauna patrons in Taipei area. *Physica A: Statistical Mechanics and its Applications*. 2006; 362: 495–503. <https://doi.org/10.1016/j.physa.2005.08.068>

19. Hsieh YH, de Arazoza H, Lee SM & Chen CW. Estimating the number of Cubans infected sexually by human immunodeficiency virus using contact tracing data. *International journal of epidemiology*. 2002; 31: 679–683. <https://doi.org/10.1093/ije/31.3.679> PMID: 12055173
20. Moran PAP. A mathematical theory of animal trapping. *Biometrika*. 1951; 38: 307–311. <https://doi.org/10.1093/biomet/38.3-4.307>
21. Zippin C. An evaluation of the removal method of estimating animal populations. *Biometrics*. 1956; 12: 163–189. <https://doi.org/10.2307/3001759>
22. Davis AJ, Hooten MB, Miller RS, Farnsworth ML, Lewis J, Moxcey M, et al. Inferring invasive species abundance using removal data from management actions. *Ecological Applications*. 2016; 26: 2339–2346. <https://doi.org/10.1002/eap.1383> PMID: 27755739
23. Germano JM, Field KJ, Griffiths RA, Clulow S, Foster J, Harding G, et al. Mitigation-driven translocations: Are we moving wildlife in the right direction? *Frontiers in Ecology and the Environment*. 2015; 13: 100–105. <https://doi.org/10.1890/140137>
24. St. Clair K, Dunton E & Giudice J. A comparison of models using removal effort to estimate animal abundance. *Journal of Applied Statistics*. 2013; 40: 527–545. <https://doi.org/10.1080/02664763.2012.748016>
25. Moher D, Liberati A, Tetzlaff J, & Altman DG. Preferred reporting items for systematic reviews and meta-analyses: the PRISMA statement. *Annals of internal medicine*. 2009; 151: 264–269. <https://doi.org/10.7326/0003-4819-151-4-200908180-00135> PMID: 19622511
26. Colomer MÀ, Oliva Vidal P, Jiménez J, Martínez JM, & Margalida A. Prioritizing among removal scenarios for the reintroduction of endangered species: insights from bearded vulture simulation modeling. *Animal Conservation*. 2020; 23: 396–406. <https://doi.org/10.1111/acv.12549>
27. DeLury DB. On the estimation of biological populations. *Biometrics*. 1947; 3: 145–167. <https://doi.org/10.2307/3001390> PMID: 18902271
28. Hayne DC. An examination of the strip census method for estimating animal populations. *Journal of Wildlife Management*. 1949; 13: 145–157. <https://doi.org/10.2307/3796084>
29. Seber GAF & Le Cren ED. Estimating Population Parameters from Catches Large Relative to the Population. *Journal of Animal Ecology*. 1967; 36: 631–643. <https://doi.org/10.2307/2818>
30. Schnute J. A new approach to estimating populations by the removal method. *Canadian Journal of Fisheries and Aquatic Sciences*. 1983; 40: 2153–2169. <https://doi.org/10.1139/f83-250>
31. Caughley G. *Analysis of vertebrate populations*. Wiley. 1977.
32. Seber GAF & Whale JF. The removal method for two and three samples. *Biometrics*, 1970; 26, 393–400. <https://doi.org/10.2307/2529096> PMID: 5480657
33. Bedrick EJ. Maximum-likelihood estimation for the removal method. *The Canadian Journal of Statistics*. 1994; 22(2): 285–293. <https://doi.org/10.2307/3315590>
34. Hirst D. An improved removal method for estimating animal abundance. *Biometrics*. 1994; 50(2): 501–505. <https://doi.org/10.2307/2533392> PMID: 8068849
35. Bravo R, Soriguer MC, Villar N, & Hernando JA. A simple method to estimate the significance level of the catch probability in the catch removal method in river fish populations. *Fisheries research*. 1999; 44(2): 179–182. [https://doi.org/10.1016/S0165-7836\(99\)00081-8](https://doi.org/10.1016/S0165-7836(99)00081-8)
36. Carle FL, & Strub MR. A new method for estimating population size from removal data. *Biometrics*. 1978; 34: 621–630. <https://doi.org/10.2307/2530381>
37. Gatz AJ, & Loar JM. Petersen and removal population size estimates: combining methods to adjust and interpret results when assumptions are violated. *Environmental Biology of Fishes*. 1988; 21: 293–307. <https://doi.org/10.1007/BF00000377>
38. Roff DA. On the accuracy of some mark-recapture estimators. *Oecologia*. 1973; 12: 15–34. <https://doi.org/10.1007/BF00345468> PMID: 28307722
39. van Poorten BT, Barrett B, Walters CJ and Ahrens RNM. Are removal-based abundance models robust to fish behavior? *Fisheries Research*. 2017; 196: 160–169. <https://doi.org/10.1016/j.fishres.2017.06.010>
40. Skalski JR, & Robson DS. A mark and removal field procedure for estimating population abundance. *The Journal of Wildlife Management*. 1982; 46: 741–751. <https://doi.org/10.2307/3808567>
41. Matechou E, McCrear RS, Morgan BJT, Nash DJ & Griffiths RA. Open models for removal data. *Annals of Applied Statistics*. 2016; 10: 1572–1589. <https://doi.org/10.1214/16-AOAS949>
42. Zucchini W, MacDonald IL & Langrock R. *Hidden Markov models for time series* Chapman & Hall/ CRC press. 2016.

43. Link WA, Converse SJ, Yackel AA & Hostetter NJ. Analysis of population change and movement using robust design removal data. *Journal of Agricultural Biological and Environmental Statistics*. 2018; 23: 463–477. <https://doi.org/10.1007/s13253-018-0335-8>
44. Kelker GH. Estimating deer populations by a differential hunting loss in the sexes. *Utah Academy of Science and Art Letters*. 1940; 17: 6–69.
45. Paulik GJ & Robson DS. Statistical Calculations for Change-in-Ratio Estimators of Population Parameters *Journal of Wildlife Management*. 1969; 33(1): 1–27. <https://doi.org/10.2307/3799646>
46. Katsanevakis S, Weber A, Pipitone C, Leopold M, Cronin M, Scheldat M, et al. Monitoring marine populations and communities: methods dealing with imperfect detectability. *Aquatic Biology*. 2012; 16: 31–52. <https://doi.org/10.3354/ab00426>
47. North PM & Morgan BJT. Modelling heron survival using weather data. *Biometrics*. 1979; 35: 667–682. <https://doi.org/10.2307/2530260>
48. Udevitz MS & Pollock KH. Using Effort Information with Change-in-Ratio Data for Population Estimation. *Biometrics*. 1995; 51: 471–481. <https://doi.org/10.2307/2532935>
49. Chao A & Chang SH. An estimating function approach to the inference of catch-effort models. *Environmental and Ecological Statistics*. 1999; 6: 313–334. <https://doi.org/10.1023/A:1009687514770>
50. Eberhardt LL. Calibrating an index using removal data. *Journal of Wildlife Management*. 1982; 46: 734–740. <https://doi.org/10.2307/3808566>
51. Ihde TF, Hoenig JM & Frusher SD. An index-removal abundance estimator that allows for seasonal change in catchability, with application to southern rock lobster *Jasus edwardsii*. *Transactions of the American Fisheries Society*. 2008; 38(1): 720–735. <https://doi.org/10.1577/T06-272.1>
52. Routledge RD. The Removal Method for Estimating Natural Populations: Incorporating Auxiliary Information. *Biometrics*. 1989; 45(1): 111–121. <https://doi.org/10.2307/2532038>
53. Golding JD, & Dreitz VJ. Comparison of removal based methods for estimating abundance of five species of prairie songbirds. *Journal of Field Ornithology*. 2016; 87(4): 417–426. <https://doi.org/10.1111/jof.12176>
54. Wang Y & Yip PSF. An extension of the Lin-Yip estimator for continuous-time capture studies. *Journal of Agricultural, Biological and Environmental Statistics*. 2002; 7(4): 574–585. <https://doi.org/10.1198/108571102771>
55. Liu L, Yip PSF & Watson RK. Removal process estimation of population size for a population with known sex ratio. *Environmental and Ecological Statistics*. 2003; 10: 281–292. <https://doi.org/10.1023/A:1023655030828>
56. Liu L & Yip PSF. Estimating population size in proportional trapping-removal models. *Statistica Sinica*. 2003; 13: 243–254.
57. You N & Liu L. Proportional trapping-removal model with a known ratio. *Communications in Statistics—Theory and Methods*. 2006; 35(1): 33–41. <https://doi.org/10.1080/03610920500438697>
58. Zipkin EF & Saunders SP. Synthesizing multiple data types for biological conservation using integrated population models. *Biological Conservation*. 2018; 217: 240–250. <https://doi.org/10.1016/j.biocon.2017.10.017>
59. Liu L & Yip PSF. Proportional trapping-removal models with contaminated data. *Journal of Statistical Planning and Inference*. 2005; 127: 131–142. <https://doi.org/10.1016/j.jspi.2003.09.012>
60. Royle JA. N-Mixture models for estimating population size from spatially replicated counts. *Biometric*. 2004; 60: 108–115. <https://doi.org/10.1111/j.0006-341X.2004.00142.x> PMID: 15032780
61. Wormack KM, Amelon SK, Thompson F. R. III, & LeBrun J. J. Performance of hierarchical abundance models on simulated bat capture data. *Acta Chiropterologica*. 2018; 20(2): 465–474.
62. Dennis E, Morgan BJT & Ridout MS. Computational aspects of N-mixture models. *Biometrics*. 2014; 71: 237–246. <https://doi.org/10.1111/biom.12246> PMID: 25314629
63. Haines L. Multinomial N-mixture models for removal sampling. *Biometrics*. 2019; 76: 540–548. <https://doi.org/10.1111/biom.13147> PMID: 31513284
64. Bohrmann TF, & Christman MC. Optimal allocation of sampling effort in depletion surveys. *Journal of agricultural, biological, and environmental statistics*. 2013; 18(2): 218–233. <https://doi.org/10.1007/s13253-013-0132-3>
65. Zhou M. Statistical Development of Ecological Removal Models. (PhD Thesis, University of Kent). 2018.
66. Farnsworth GL, Pollock KH, Nichols JD, Simons TR, Hines JE, & Sauer JR. A removal model for estimating detection probabilities from point-count surveys. *The Auk*. 2002; 119: 414–425. <https://doi.org/10.1093/auk/119.2.414>

67. Bar J, Droege S, Geissler P, Peterjohn B & Ralph CJ. Density estimation in wildlife surveys. *Wildlife Society Bulletin*. 2004; 32(4): 1242–1247. [https://doi.org/10.2193/0091-7648\(2004\)032%5B1242:DEIWS%5D2.0.CO;2](https://doi.org/10.2193/0091-7648(2004)032%5B1242:DEIWS%5D2.0.CO;2)
68. Amundson CL, Royle JA, & Handel CM. A hierarchical model combining distance sampling and time removal to estimate detection probability during avian point counts. *The Auk*. 2014; 131: 476–494. <https://doi.org/10.1642/AUK-14-11.1>
69. MacKenzie DI & Royle JA. Designing occupancy studies general advice and allocation of survey effort. *Journal of Applied Ecology*. 2005; 42: 1105–1114. <https://doi.org/10.1111/j.1365-2664.2005.01098.x>
70. Rota CT, Fletcher RJ, Dorazio RM & Betts MG. Occupancy estimation and the closure assumption. *Journal of Applied Ecology*. 2009; 46: 1173–1181.
71. Chandler RB, Royle JA & King DI. Inference about density and temporary emigration in unmarked populations. *Ecology*. 2011; 92: 1429–1435. <https://doi.org/10.1890/10-2433.1> PMID: 21870617
72. Moore JE, Scheiman DM, & Swihart RK. Field comparison of removal and modified double-observer modeling for estimating detectability and abundance of birds. *The Auk*. 2004; 121(3): 865–876.
73. Stanley TR, & Skagen SK. Estimating the breeding population of long billed curlew in the United States. *The Journal of Wildlife Management*. 2007; 71(8): 2556–2564. <https://doi.org/10.2193/2007-023>
74. Thompson FR III & La Sorte FA. Comparison of methods for estimating bird abundance and trends from historical count data. *The Journal of Wildlife Management*. 2008; 72(8): 1674–1682. <https://doi.org/10.2193/2008-135>
75. Jones SL, Nations CS, Fellows SD, & McDonald LL. Breeding abundance and distribution of Long-billed Curlews (*Numenius americanus*) in North America. *Waterbirds*. 2008; 31(1): 1–14. [https://doi.org/10.1675/1524-4695\(2008\)31%5B1:BAADOL%5D2.0.CO;2](https://doi.org/10.1675/1524-4695(2008)31%5B1:BAADOL%5D2.0.CO;2)
76. Handel CM, Swanson SA, Nigro DA, & Matsuoka SM. Estimation of avian population sizes and species richness across a boreal landscape in Alaska? *The Wilson Journal of Ornithology*. 2009; 121(3): 528–548. <https://doi.org/10.1676/08-067.1>
77. McConnell S, O'Connell TJ, Leslie DM Jr, & Shackford JS. Mountain Plovers in Oklahoma: distribution, abundance, and habitat use. *Journal of Field Ornithology*. 2009; 80(1): 27–34. <https://doi.org/10.1111/j.1557-9263.2009.00202.x>
78. Barbraud C, Delord K, Marteau C, & Weimerskirch H. Estimates of population size of white chinned petrels and grey petrels at Kerguelen Islands and sensitivity to fisheries. *Animal Conservation*. 2009; 12(3): 258–265. <https://doi.org/10.1111/j.1469-1795.2009.00248.x>
79. Reid SM, & Devlin J. Effectiveness of stream sampling methods in capturing non-native Rusty Crayfish (*Orconectes rusticus*) in Ontario. *The Canadian Field-Naturalist*. 2014; 128(2): 111–118. <https://doi.org/10.22621/cfn.v128i2.1564>
80. Saracco JF, Siegel RB, & Wilkerson RL. Occupancy modeling of Black backed Woodpeckers on burned Sierra Nevada forests. *Ecosphere*. 2011; 2(3): 1–17. <https://doi.org/10.1890/ES10-00132.1>
81. Murray LD, Gates RJ, & Spinola RM. Evaluation of three methods to estimate density and detectability from roadside point counts. *The Journal of Wildlife Management*. 2011; 75(5): 1072–1081. <https://doi.org/10.1002/jwmg.131>
82. Sólymos P, Matsuoka SM, Bayne EM, Lele SR, Fontaine P, Cumming SG, et al. Calibrating indices of avian density from nonstandardized survey data: Making the most of a messy situation. *Methods in Ecology and Evolution*. 2013; 4(11):1047–58. <https://doi.org/10.1111/2041-210X.12106>
83. Twedt DJ. Estimating regional landbird populations from enhanced North American breeding bird surveys. *Journal of Field Ornithology*. 2015; 86(4): 352–368. <https://doi.org/10.1111/jfo.12118>
84. Good IJ, Lewis BC, Gaskins RA & Howell LW. Population estimation by the removal method assuming proportional trapping. *Biometrika*. 1979; 66(3): 485–94. <https://doi.org/10.1093/biomet/66.3.485>
85. Nolte E, Bart J, Pauli B, Kaltenecker G, & Heath J. Detectability of migrating raptors and its effect on bias and precision of trend estimates. *Avian Conservation and Ecology*. 2016; 11(2). <https://doi.org/10.5751/ACE-00894-110209>
86. Twedt DJ, & Wilson RR. Breeding birds in managed forests on public conservation lands in the Mississippi Alluvial Valley. *Forest ecology and management*. 2017; 384:180–190. <https://doi.org/10.1016/j.foreco.2016.10.031>
87. Chaves WA, Sieving KE, & Fletcher RJ Jr. Avian responses to reduced-impact logging in the southwestern Brazilian Amazon. *Forest ecology and management*. 2017; 384: 147–156. <https://doi.org/10.1016/j.foreco.2016.10.042>
88. Matseur EA, Thompson FR III, Dickerson BE, Rumble MA, & Millsbaugh JJ. Black backed woodpecker abundance in the Black Hills. *The Journal of Wildlife Management*. 2018; 82(5): 1039–1048. <https://doi.org/10.1002/jwmg.21450>

89. Sólymos P, Matsuoka SM, Cumming SG, Stralberg D, Fontaine P, Schmiegelow FKA, et al. Evaluating time-removal models for estimating availability of boreal birds during point-count surveys: sample size requirements and model complexity. *Condor*. 2018; 120:765–786. <https://doi.org/10.1650/CONDOR-18-32.1>
90. Mizel JD, McIntyre CL, Lewis SB, Lindberg MS, & Schmidt JH. A multi state, time removal model for population dynamics of cliff nesting raptors. *The Journal of Wildlife Management*. 2018; 82(8): 1701–1710. <https://doi.org/10.1002/jwmg.21526>
91. Kellner KF. Local-scale Habitat Components Driving Bird Abundance in Eastern Deciduous Forests. *The American Midland Naturalist*. 2018; 180(1): 52–66. <https://doi.org/10.1674/0003-0031-180.1.52>
92. Matseur EA, Millsbaugh JJ, Thompson FR III, Dickerson BE, & Rumble MA. The importance of disturbance and forest structure to bird abundance in the Black Hills. *The Condor: Ornithological Applications*. 2019; 121(1). <https://doi.org/10.1093/condor/duy023>
93. Peterson J, Taylor M, & Hanson A. Leslie population estimate for a large lake. *Transactions of the American Fisheries Society*. 1980; 109(3): 329–331. [https://doi.org/10.1577/1548-8659\(1980\)109%3C329:LPEFAL%3E2.0.CO;2](https://doi.org/10.1577/1548-8659(1980)109%3C329:LPEFAL%3E2.0.CO;2)
94. Jones ML, & Stockwell JD. Statistical analysis of removal experiments with the use of auxiliary variables. *North American Journal of Fisheries Management*. 1997; 15(3): 551–562.
95. Zamora L, Saavedra D, & Moreno-Amich R. Stock assessment, biomass and fish production in two mediterranean basins (NE Spain). *Limnetica*. 1996; 12: 47–58.
96. Feunteun E, Acou A, Guilloët J, Laffaille P & Legault A. Spatial distribution of an eel population (*Anguilla anguilla* L.) in a small coastal catchment of Northern Brittany (France). Consequences of hydraulic works. *Bulletin Français de la Pêche et de la Pisciculture*. 1998; 349: 129–139. <https://doi.org/10.1051/kmae:1998038>
97. Brownie C & Robson DS. Estimation of time-specific survival rates from tag-resighting samples: a generalization of the Jolly-Seber model. *Biometrics*. 1983; 39: 437–453. <https://doi.org/10.2307/2531015>
98. Finstad AG, Jansen PA & Langeland A. Gillnet selectivity and size and age structure of an alpine Arctic char (*Salvelinus alpinus*) population. *Canadian Journal of Fisheries and Aquatic Sciences*. 2000; 57(8): 1718–1727. <https://doi.org/10.1139/f00-071>
99. Rosenberger AE & Dunham JB. Validation of abundance estimates from mark-recapture and removal techniques for rainbow trout captured by electrofishing in small streams. *North American Journal of Fisheries Management*. 2005; 25(4): 1395–1410. <https://doi.org/10.1577/M04-081.1>
100. Baumgartner LJ. Population estimation methods to quantify temporal variation in fish accumulations downstream of a weir. *Fisheries Management and Ecology*. 2006; 13(6): 355–364. <https://doi.org/10.1111/j.1365-2400.2006.00513.x>
101. Dauwalter DC, & Fisher WL. Electrofishing capture probability of smallmouth bass in streams. *North American Journal of Fisheries Management*. 2007; 27(1): 162–171. <https://doi.org/10.1577/M06-008.1>
102. Rivot E, Prévost E, Cuzol A, Baglinière JL, & Parent E. Hierarchical Bayesian modelling with habitat and time covariates for estimating riverine fish population size by successive removal method. *Canadian Journal of Fisheries and Aquatic Sciences*. 2008; 65(1): 117–133. <https://doi.org/10.1139/f07-153>
103. Booth AJ, Traasg GR, & Weyl OL. Adult African sharptooth catfish, *Clarias gariepinus*, population dynamics in a small invaded warm-temperate impoundment. *African Zoology*. 2010; 45(2): 299–308. <https://doi.org/10.3377/004.045.0208>
104. Meyer KA, & High B. Accuracy of removal electrofishing estimates of trout abundance in Rocky Mountain streams. *North American Journal of Fisheries Management*. 2011; 31(5): 923–933. <https://doi.org/10.1080/02755947.2011.633684>
105. Reidy JL, Thompson FR III, & Bailey JW. Comparison of methods for estimating density of forest songbirds from point counts. *The Journal of Wildlife Management*. 2011; 75(3): 558–568. <https://doi.org/10.1002/jwmg.93>
106. Yüksel F, Alp A, Gündüz F, Çoban MZ, & Demirof F. Estimation of the population size of Capoeta umbla (heckel, 1843) in the Lake Hazar (Elazığ) by removal method. *Journal of Nanomaterials and Biostructures*. 2014; 9(1): 167–174.
107. Mazzoni R, da Silva RC, & Pinto MP. Invasion and colonisation of a tropical stream by an exotic lorcarid fish: indices of gradual displacement of the native common pleco (*Hypostomus punctatus*) by the red fin dwarf pleco (*Parotocinclus maculicauda*) over fifteen years. *PloS one*. 2015; 10(10): e0139968. <https://doi.org/10.1371/journal.pone.0139968> PMID: 26440412
108. Koenig MK, Meyer KA, Kozfkay JR, DuPont JM, & Schriever EB. Evaluating the ability of tiger muskellunge to eradicate Brook Trout in Idaho alpine lakes. *North American Journal of Fisheries Management*. 2015; 35(4): 659–670. <https://doi.org/10.1080/02755947.2015.1035467>

109. Harris JE, Jolley JC, Silver GS, Yuen H, & Whitesel TA. An experimental evaluation of electrofishing catchability and catch depletion abundance estimates of larval lampreys in a wadeable stream: use of a hierarchical approach. *Transactions of the American Fisheries Society*. 2016; 145(5): 1006–1017. <https://doi.org/10.1080/00028487.2016.1185034>
110. Tanir ÖZ & Korkmaz AŞ. Density and Biomass of Fish Populations in Kirmir Stream of Sakarya. *Journal of Agricultural Sciences*. 2016.
111. Zeh JE, Ko D, Krogman BD, & Sonntag R. A multinomial model for estimating the size of a whale population from incomplete census data. *Biometrics*. 1986; 1–14. <https://doi.org/10.2307/2531239> PMID: 3719047
112. Raftery AE, & Zeh JE. Estimating bowhead whale population size and rate of increase from the 1993 census. *Journal of the American Statistical Association*. 1998; 93(442): 451–463. <https://doi.org/10.1080/01621459.1998.10473694>
113. Rainbolt RE, & Coblenz BE. Restoration of insular ecosystems: control of feral goats on Aldabra Atoll, Republic of Seychelles. *Biological Invasions*. 1999; 1(4): 363–375. <https://doi.org/10.1023/A:1010024429207>
114. Andrea D, Gentile R, Maroja LS, Fernandes FA, Coura R, & Cerqueira R. Small mammal populations of an agroecosystem in the Atlantic Forest domain, southeastern Brazil. *Brazilian Journal of Biology*. 2007; 67(1): 179–186. <https://doi.org/10.1590/S1519-69842007000100025> PMID: 17505767
115. Haskell SP. Validity of hunter surveys for daily effort and deer sightings in Vermont. *Wildlife Society Bulletin*. 2011; 35(4): 438–444. <https://doi.org/10.1002/wsb.86>
116. Keech MA, Taras BD, Boudreau TA, & Boertje RD. Black bear population reduction and recovery in western Interior Alaska. *Wildlife Society Bulletin*. 2014; 38(1): 71–77. <https://doi.org/10.1002/wsb.367>
117. Byrne AW, O’Keeffe J, Sleeman DP, Davenport J, & Martin SW. Impact of culling on relative abundance of the European badger (*Meles meles*) in Ireland. *European journal of wildlife research*. 2013; 59(1): 25–37. <https://doi.org/10.1007/s10344-012-0643-1>
118. Fleming HL, Jones JC, Belant JL, & Richardson DM. Probability of Detection and Visual Count Error for Rafinesque’s Big-eared Bat (*Corynorhinus rafinesquii*) and Southeastern myotis (*Myotis austroriparius*) in Tree Cavities. *The American Midland Naturalist*. 2013; 169(1): 56–66. <https://doi.org/10.1674/0003-0031-169.1.43>
119. Hussain I. The level of rodent problems in poultry farms of Rawalpindi-Islamabad, Pakistan. *Mammalia*. 2016; 80(2): 193–204.
120. Parra GJ, & Cagnazzi D. Conservation status of the Australian humpback dolphin (*Sousa sahalensis*) using the IUCN Red List Criteria. *Advances in marine biology*. 2016; Vol. 73: 157–192. Academic Press. <https://doi.org/10.1016/bs.amb.2015.07.006> PMID: 26790892
121. Davis AJ, Leland B, Bodenchuk M, VerCauteren KC, & Pepin KM. Estimating population density for disease risk assessment: the importance of understanding the area of influence of traps using wild pigs as an example. *Preventive veterinary medicine*. 2017; 141: 33–37. <https://doi.org/10.1016/j.prevetmed.2017.04.004> PMID: 28532991
122. Lampo M, & Bayliss P. Density estimates of cane toads from native populations based on mark-recapture data. *Wildlife Research*. 1996; 23(3): 305–315. <https://doi.org/10.1071/WR9960305>
123. Salvidio S. Estimating abundance and biomass of a *Speleomantes strinatii* (Caudata, Plethodontidae) population by temporary removal sampling. *Amphibia-Reptilia*. 1998; 19(2): 113–124. <https://doi.org/10.1163/156853898X00412>
124. Salvidio S. Population dynamics and regulation in the cave salamander *Speleomantes strinatii*. *Naturwissenschaften*. 2007; 94(5): 396–400. <https://doi.org/10.1007/s00114-006-0202-2> PMID: 17216185
125. Louette G, Devisscher S & Adriaens T. Control of invasive American bullfrog *Lithobates catesbeianus* in small shallow water bodies. *European Journal of Wildlife Research*. 2013; 59(1): 105–114. <https://doi.org/10.1007/s10344-012-0655-x>
126. Göçmen B, Cicek K, Akman B, Oğuz MA & Yalçinkaya D. Population size estimates of *Lissotriton vulgaris* (L., 1758) and *Triturus ivanbureschi* Arntzen & Wielstra 2013 (Caudata: Salamandridae) from Edirne, European part of Turkey. *North-Western Journal of Zoology*. 2015; 11(2).
127. Romano A, Anderle M, Forti A, Partel P & Pedrini P. Population density, sex ratio and body size in a population of *Salamandra atra atra* on the Dolomites. *Acta Herpetologica*. 2018; 13(2): 195–199.
128. Peterson JT, Thurow RF, & Guzevich JW. An evaluation of multipass electrofishing for estimating the abundance of stream dwelling salmonids. *Transactions of the American Fisheries Society*. 2004; 133(2): 462–475. <https://doi.org/10.1577/03-044>
129. Gowan C & Knisley CB. Distribution, abundance and conservation of the highly endemic Coral Pink Sand Dunes tiger beetle, *Cicindela albissima* Rumpff. *Biodiversity*. 2014; 15(2-3): 119–129. <https://doi.org/10.1080/14888386.2014.930718>

130. Akhouni M, Jourdain F, Chandre F, Delaunay P & Roiz D. Effectiveness of a field trap barrier system for controlling *Aedes albopictus*: a “removal trapping” strategy. *Parasites & vectors*. 2018; 11(1): 101. <https://doi.org/10.1186/s13071-018-2691-1> PMID: 29463300
131. Elliott JM. Population size, weight distribution and food in a persistent population of the rare medicinal leech, *Hirudo medicinalis*. *Freshwater Biology*. 2008; 53(8): 1502–1512. <https://doi.org/10.1111/j.1365-2427.2008.01978.x>
132. Baillargeon S & Rivest LP. Rcapture: loglinear models for capture-recapture in R. *Journal of Statistical Software*. 2007; 19(5): 1–31. <https://doi.org/10.18637/jss.v019.i05>
133. R Core Team. R: A language and environment for statistical computing. R Foundation for Statistical Computing, Vienna, Austria. 2017 <https://www.R-project.org/>.
134. White GC & Burnham KP. Program MARK: survival estimation from populations of marked animals. *Environmental and Ecological Statistics*. 1999; 15(1): 89–99. <https://doi.org/10.1007/s10651-007-0030-3>
135. White GC. Closed population estimation models and their extensions in Program MARK. *Bird study*. 2008; 46(sup1): S120–S139.
136. Featherman ER & Lepak JM. Addressing depletion failure and estimating gear efficiency using back-calculation of capture probabilities. *Fisheries Research*. 2013; 147: 284–289. <https://doi.org/10.1016/j.fishres.2013.06.005>
137. Laake JL, Johnson DS & Conn PB. marked: An R package for maximum-likelihood and MCMC analysis of capture-recapture data. *Methods in Ecology and Evolution*. 2013; 4: 885–890. <https://doi.org/10.1111/2041-210X.12065>
138. Laake JL, Borchers D, Thomas L, Miller, D & Bishop J. mrds: Mark-recapture distance sampling. R package version, 2. 2015.
139. Fiske I & Chandler R. unmarked: An R Package for Fitting Hierarchical Models of Wildlife Occurrence and Abundance. *Journal of Statistical Software*. 2011; 43(10): 1–23. <https://doi.org/10.18637/jss.v043.i10>
140. Seaby RMH & Henderson PA. Removal Sampling 2. Pisces Conservation Ltd., Lymington, England. 2007.
141. MacKenzie, D & Hines J. RPresence: R Interface for Program PRESENCE. R package version 1.1.1. 2015.
142. Miller DL, Rexstad E, Thomas L, Marshall M & Laake JL. Distance Sampling in R. *Journal of Statistical Software*. 2019; 89: 1–28. <https://doi.org/10.18637/jss.v089.i01>
143. Prescott J, Vogel C, Pollock K, Hyson S, Oktaviani D & Panggabean AS. Estimating sea cucumber abundance and exploitation rates using removal methods. *Marine and Freshwater Research*. 2013; 64(7): 599–608. <https://doi.org/10.1071/MF12081>
144. Chee YE, & Wintle BA. Linking modelling, monitoring and management: an integrated approach to controlling overabundant wildlife. *Journal of Applied Ecology*. 2010; 47(6): 1169–1178. <https://doi.org/10.1111/j.1365-2664.2010.01877.x>
145. Godefroid S, Piazza C, Rossi G, Buord S, Stevens AD, Aguruija R, et al. How successful are plant species reintroductions? *Biological Conservation*. 2011; 144(2): 672–682. <https://doi.org/10.1016/j.biocon.2010.10.003>
146. Seddon PJ, Armstrong DP & Maloney RF. Developing the science of reintroduction biology. *Conserv. Biol*. 2007; 21: 303–12. <https://doi.org/10.1111/j.1523-1739.2006.00627.x> PMID: 17391180
147. Bajomi B, Pullin AS, Stewart GB & Takács-Sánta A. Bias and dispersal in the animal reintroduction literature. *Oryx*. 2010; 44: 358–65. <https://doi.org/10.1017/S0030605310000281>
148. Dodd CKJ & Seigel RA. Relocation, repatriation, and translocation of amphibians and reptiles: are they conservation strategies that work? *Herpetologica*. 1991; 47: 336–350.
149. Germano JM & Bishop PJ. Suitability of Amphibians and Reptiles for Translocation. *Conserv. Biol*. 2009; 23: 7–15. <https://doi.org/10.1111/j.1523-1739.2008.01123.x> PMID: 19143783
150. Sarrazin F & Legendre S. Demographic approach to releasing adults versus young in reintroductions. *Conserv. Biol*. 2000; 14: 488–500. <https://doi.org/10.1046/j.1523-1739.2000.97305.x>
151. Armstrong DP & Seddon PJ. Directions in reintroduction biology. *Trend Ecol. Evol*. 2008; 23: 20–25. <https://doi.org/10.1016/j.tree.2007.10.003> PMID: 18160175
152. Le Gouar P, Robert A, Choisy J-P, Henriquet S, Lecuyer P, Tessier C, et al. Roles of survival and dispersal in reintroduction success of griffon vulture (*Gyps fulvus*). *Ecol. Appl*. 2008; 18: 859–872. <https://doi.org/10.1890/07-0854.1> PMID: 18536248
153. Mihoub J-B, Prince K, Duriez O, Lecuyer P, Eliotout B & Sarrazin F. Comparing the effects of release methods on survival of the Eurasian black vulture *Aegyptius monachus* reintroduced in France. *Oryx*. 2013; 48: 106–115. <https://doi.org/10.1017/S0030605312000981>

154. Robert A, Colas B, Guigon I, Kerbiriou C, Mihoub J-B, Saint-Jalme M, et al. Developing the science of reintroduction biology. *Anim. Conserv.* 2015; 18: 397–406.
155. Bertolero A, Pretus JL & Oro D. The importance of including survival release costs when assessing viability in reptile translocations. *Biol. Conserv.* 2018; 217: 311–320. <https://doi.org/10.1016/j.biocon.2017.11.023>
156. McCleery R, Hostetler JA & Oli MK. Better off in the wild? Evaluating a captive breeding and release program for the recovery of an endangered rodent. *Biol. Conserv.* 2014; 169: 198–205. <https://doi.org/10.1016/j.biocon.2013.11.026>
157. Margalida A, Colomer MA, Oro D, Arlettaz R & Donazar JA. Assessing the impact of removal scenarios on population viability of a threatened, long-lived avian scavenger. *Sci. Rep.* 2015; 5: 16962. <https://doi.org/10.1038/srep16962> PMID: 26593059
158. Boesch DF. Diversity, stability and response to human disturbance in estuarine ecosystems. In: Structure, functioning and management of ecosystems. Proc First Int Congr Ecol. PUDOC. Wageningen. 1974: 109-114.
159. Orians GH. Diversity, stability and maturity in natural ecosystems. In: van Dobben WH, Low-McConnell RH (eds) Unifying concepts in ecology. The Hague. 1974: 139–150.
160. Schwarz CJ & Seber GA. A review of estimating animal abundance III. *Statistical Science.* 1999; 14(4); 427–456.