



# Kent Academic Repository

**Martell, H.J., Masterson, Stuart G., McGreig, Jake M, Michaelis, Martin and Wass, Mark N. (2019) *Is the Bombali virus pathogenic in humans?* *Bioinformatics*, 35 (19). pp. 3553-3558. ISSN 1367-4803.**

## Downloaded from

<https://kar.kent.ac.uk/73757/> The University of Kent's Academic Repository KAR

## The version of record is available from

<https://doi.org/10.1093/bioinformatics/btz267>

## This document version

Author's Accepted Manuscript

## DOI for this version

## Licence for this version

UNSPECIFIED

## Additional information

## Versions of research works

### Versions of Record

If this version is the version of record, it is the same as the published version available on the publisher's web site. Cite as the published version.

### Author Accepted Manuscripts

If this document is identified as the Author Accepted Manuscript it is the version after peer review but before type setting, copy editing or publisher branding. Cite as Surname, Initial. (Year) 'Title of article'. To be published in *Title of Journal*, Volume and issue numbers [peer-reviewed accepted version]. Available at: DOI or URL (Accessed: date).

## Enquiries

If you have questions about this document contact [ResearchSupport@kent.ac.uk](mailto:ResearchSupport@kent.ac.uk). Please include the URL of the record in KAR. If you believe that your, or a third party's rights have been compromised through this document please see our [Take Down policy](https://www.kent.ac.uk/guides/kar-the-kent-academic-repository#policies) (available from <https://www.kent.ac.uk/guides/kar-the-kent-academic-repository#policies>).

---

## Subject Section

# Is the bombali virus pathogenic in humans?

Henry J. Martell<sup>§</sup>, Stuart G. Masterson<sup>§</sup> Jake E. McGreig, Martin Michaelis\*  
and Mark N Wass\*

Industrial Biotechnology Centre and School of Biosciences, University of Kent, Canterbury, Kent, CT2 7NJ, UK.

\*To whom correspondence should be addressed.

§ equal contribution

Associate Editor: XXXXXXXX

Received on XXXXX; revised on XXXXX; accepted on XXXXX

## Abstract

**Motivation:** The potential of the Bombali virus, a novel Ebolavirus, to cause disease in humans remains unknown. We have previously identified potential determinants of Ebolavirus pathogenicity in humans by analysing the amino acid positions that are differentially conserved (specificity determining positions; SDPs) between human pathogenic Ebolaviruses and the non-pathogenic Reston virus. Here, we include the many Ebolavirus genome sequences that have since become available into our analysis and investigate the amino acid sequence of the Bombali virus proteins at the SDPs that discriminate between human pathogenic and non-human pathogenic Ebolaviruses.

**Results:** The use of 1408 Ebolavirus genomes (196 in the original analysis) resulted in a set of 166 SDPs (reduced from 180), 146 (88%) of which were retained from the original analysis. This indicates the robustness of our approach and refines the set of SDPs that distinguish human pathogenic Ebolaviruses from Reston virus. At SDPs, Bombali virus shared the majority of amino acids with the human pathogenic Ebolaviruses (63.25%). However, for two SDPs in VP24 (M136L, R139S) that have been proposed to be critical for the lack of Reston virus human pathogenicity because they alter the VP24-karyopherin interaction, the Bombali virus amino acids match those of Reston virus. Thus, Bombali virus may not be pathogenic in humans. Supporting this, no Bombali virus-associated disease outbreaks have been reported, although Bombali virus was isolated from fruit bats cohabitating in close contact with humans, and anti-Ebolavirus antibodies that may indicate contact with Bombali virus have been detected in humans.

**Contact:** [m.n.wass@kent.ac.uk](mailto:m.n.wass@kent.ac.uk) [m.michaelis@kent.ac.uk](mailto:m.michaelis@kent.ac.uk)

**Supplementary information:** Supplementary data are available at *Bioinformatics* online.

---

## 1 Introduction

Ebolaviruses represent a serious public health concern. The past few years have seen multiple outbreaks in Africa, including an epidemic between 2013–16, which resulted in more than 28,000 cases and 11,000 deaths (Michaelis *et al.*, 2016; Coltart *et al.*, 2017; Lo *et al.*, 2017). Until recently, only five species of *Ebolavirus* had been identified. Four of these Ebolavirus species, Ebola virus, Sudan virus, Bundibugyo virus, and Tai forest virus are known to be pathogenic to humans, while the fifth, Reston virus, is not (Miranda and Miranda 2011; Michaelis *et al.*, 2016; Cantoni *et al.*, 2016; Baseler *et al.*, 2017). In August 2018, a new species of *Ebolavirus*,

*Bombali ebolavirus*, was identified in the Bombali region of Sierra Leone (Goldstein *et al.*, 2018). Currently, it is not known if Bombali virus causes disease in humans.

To investigate why Reston virus is not pathogenic in humans and the other four Ebolaviruses are, we have previously identified amino acid positions that are differentially conserved between these two groups (specificity determining positions; SDPs; Rausell *et al.*, 2010) and analysed their effects on protein structure and function together with the changes associated with Ebola virus adaptation to new species (Pappalardo *et al.*, 2016; 2017). The results indicated that certain SDPs in the karyopherin-binding region of the Ebolavirus protein VP24 are critical determinants of species-specific Ebolavirus pathogenicity (Pappalardo *et al.*, 2016; 2017). Here, we first

update our comparison of human pathogenic and non-human pathogenic Ebolaviruses by including the many Ebolavirus genome sequences that have become available in the last few years. Then we use this dataset to analyse the Bombali virus sequence at amino acid positions that are associated with human pathogenicity.

## 2 Results

### 2.1 Identifying determinants of Ebolavirus pathogenicity

Our original study was based on a set of 196 Ebolavirus genomes. We identified 180 SDPs that were differentially conserved between Reston virus and the human pathogenic Ebolaviruses, of which 47 mapped to protein structures and eight were proposed to have an effect on protein structure and function (Pappalardo *et al.*, 2016; Michaelis *et al.*, 2016). Here, we have expanded the dataset to 1,408 Ebolavirus genomes (those retained after filtering an initial set of 2,076 genomes for quality and completeness – see supplementary methods). This represents 7.5 times more sequences than used in the original study and also includes an increase in the number of Reston virus sequences from 17 to 27.

Phylogenetic analysis of the whole genome sequence and for each of the seven Ebolavirus proteins clearly separated each of the Ebolavirus species (Supplementary Figure 1). However, the phylogenetic trees did not separate Reston virus from the human pathogenic Ebolavirus species (Supplementary Figure 1).

High levels of conservation were observed within each species (Supplementary Figure 2). Comparison of Reston virus proteins to the proteins of the other four human pathogenic species showed that there is greater divergence in GP, NP, VP30 and VP35, with conservation between 58%-69%, whereas VP24, L and VP40 have a higher level of conservation (74-81%; Supplementary Figure 2H).

**Table 1.** Summary of the number of SDPs lost, retained and gained in the updated set of SDPs.

| Protein | Original SDPs | SDPs lost | SDPs retained | SDPs gained | Updated SDPs |
|---------|---------------|-----------|---------------|-------------|--------------|
| NP      | 29            | 5         | 24            | 0           | 24           |
| VP35    | 19            | 0         | 19            | 3           | 22           |
| VP40    | 9             | 0         | 9             | 7           | 16           |
| GP      | 30            | 11        | 19            | 1           | 20           |
| VP30    | 17            | 1         | 16            | 4           | 20           |
| VP24    | 9             | 0         | 9             | 2           | 11           |
| L       | 67            | 17        | 50            | 3           | 53           |

The increased number of Ebolavirus genomes resulted in a slight reduction of SDPs from 180 (originally reported as 189 but SDPs in sGP and GP were identical as they share a common N-terminus) to 166 in the seven Ebolavirus proteins (Figure 1, Table 1 and Supplementary Tables 1-7). Overall, 146 SDPs were retained, 34 were lost and 20 new SDPs were identified. No SDPs were lost in VP24 or VP35, and only a single SDP was lost in VP30. New SDPs were identified for each of these proteins ranging from two for VP24 to seven for VP40 (Figure 1, Table 1). More SDPs were lost in NP, GP and L, ranging from five for NP to 17 for L. At the same time, no SDPs were gained in NP, one was gained in GP and three in L (Figure 1, Table 1).

Analysis of the SDPs at the codon level revealed that for the 27 Reston virus sequences, only 10 SDPs showed any variation in codon usage, and for those ten positions there were always two codons present that represented synonymous changes. For five of these SDPs, only a single sequence contained a different codon and for the other five the codon usage was more closely balanced (Supplementary Table 8). For the pathogenic species, most amino acids at SDPs were encoded by multiple codons, with only 12 SDPs where a single codon was present (supplementary tables 9-15). 115 SDPs have only synonymous changes, while 39 SDPs also have non-synonymous changes (35 of these 39 also have synonymous changes; supplementary tables 9-15). The synonymous changes largely (106 of 115) represent differences in the codon usage between the different pathogenic species (Supplementary Tables 9-15). 23 of the non-synonymous changes are due to different codon usage between the species, while the remaining 16 non-synonymous changes occur in Ebola viruses. This shows that while variation occurs at the codon level, the amino acids encoded at SDPs are highly conserved.

### 2.2 Structural Analysis of SDPs

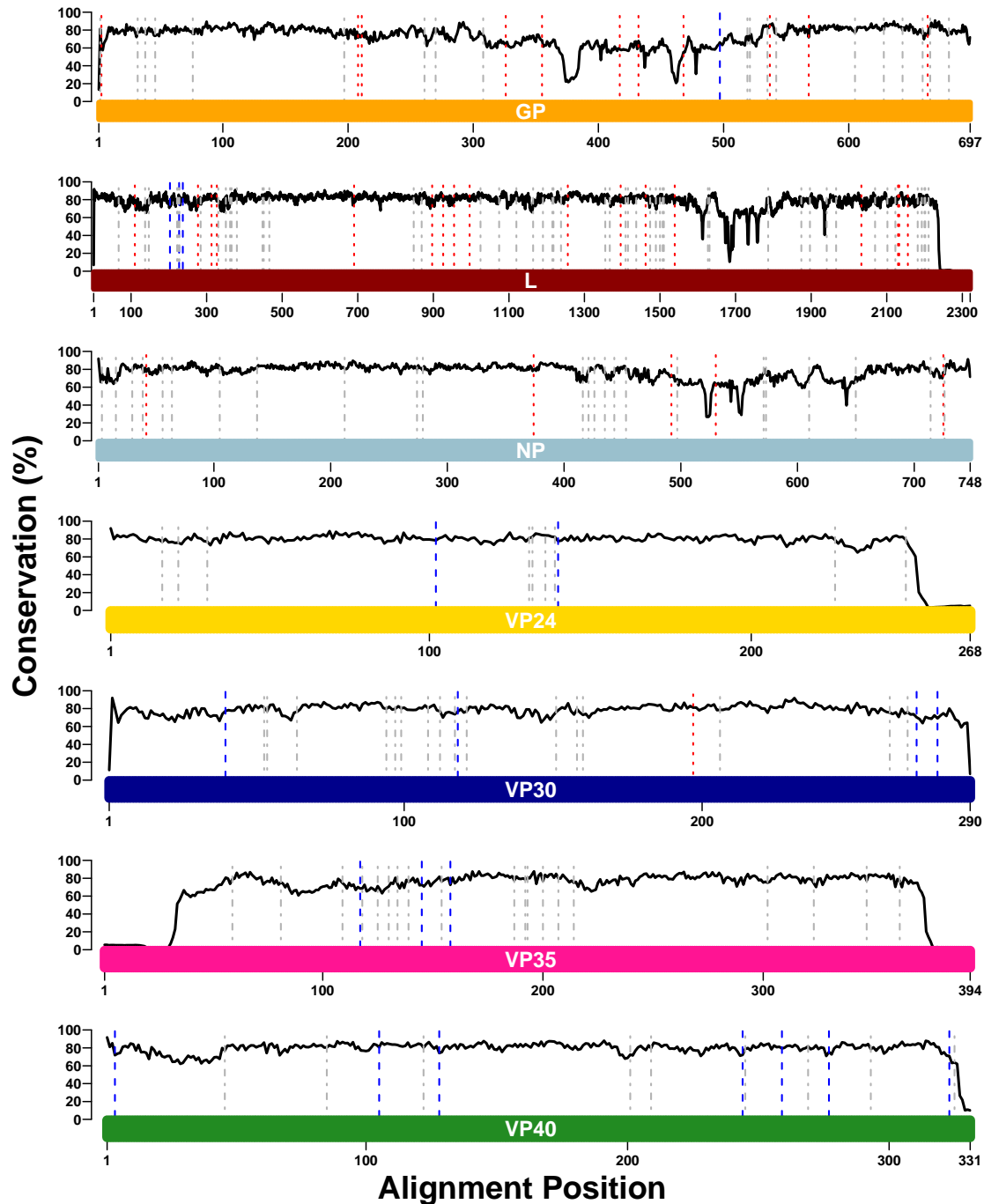
It was possible to map 92 of the 166 SDPs onto protein structures or models (supplementary methods; Table 2; Supplementary Tables 17-18), compared to 47 SDPs in the previous study (Pappalardo *et al.*, 2016). This was partly due to greater structural coverage of the proteins, with a structure of the N terminal region of VP35 (Chanthamontri *et al.*, 2018; Zinzula *et al.*, 2019) now available and also a template to model the structure of L (Supplementary Figure 3). Overall, the amino acid changes at SDPs represent conservative changes, with the majority of BLOSUM62 substitution score values being one or greater (Figure 2A). Most are predicted to be slightly destabilising to the protein structure (Figure 2B), although this analysis only considered individual SDPs in isolation. One quarter of the SDPs (42) are located in the interior of the protein with the remaining three quarters having more than 20% relative solvent accessibility (Figure 2C). These observations are consistent with the majority of SDPs having minor effects on protein structure and function.

Our previous structural analysis proposed a set of eight SDPs that were highly likely to alter protein structure and function, and a further five for which there was lower confidence (Pappalardo *et al.*, 2016). Twelve of these 13 SDPs were retained in the current analysis, with only the lower confidence NP A705R no longer being sufficiently conserved to be identified as an SDP.

**Table 2.** Summary of SDPs per ebolavirus protein, and the predicted functional impacts. SDPs were assessed to have an effect on the protein stability/integrity or protein-protein interactions. These were classed as “probable” or “possible” depending on the strength of evidence supporting the effect. of the number of SDPs lost, retained and gained in the updated set of SDPs.

| Protein | SDPs | SDPs | Probable integrity | Probable interface | Possible integrity | Possible interface |
|---------|------|------|--------------------|--------------------|--------------------|--------------------|
| NP      | 24   | 8    | 0                  | 0                  | 1                  | 0                  |
| VP35    | 22   | 15   | 0                  | 1                  | 0                  | 0                  |
| VP40    | 16   | 13   | 1                  | 1                  | 0                  | 0                  |
| GP      | 20   | 10   | 0                  | 0                  | 0                  | 3                  |
| VP30    | 20   | 5    | 0                  | 1                  | 0                  | 0                  |
| VP24    | 11   | 10   | 1                  | 4                  | 0                  | 0                  |
| L       | 53   | 31   | 0                  | 0                  | 0                  | 0                  |

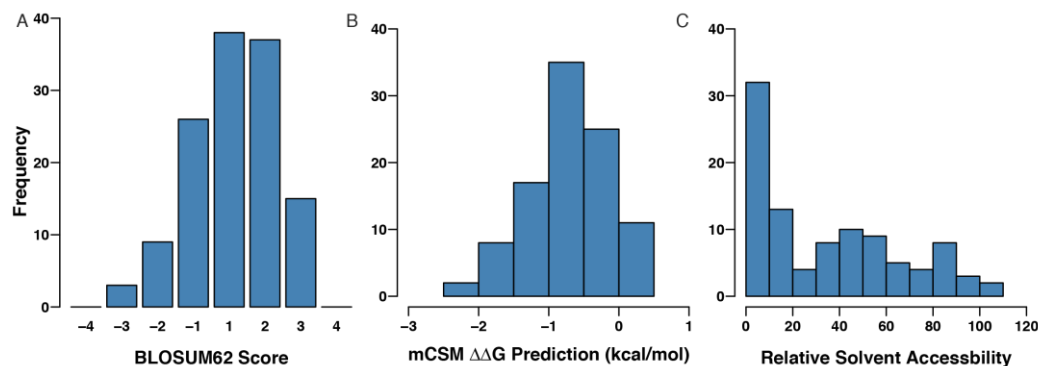
## Is Bombali virus pathogenic in humans?



**Fig1: Specificity Determining Positions (SDPs) identified between human-pathogenic Ebolaviruses and Reston virus.** The coloured bars represent the lengths of the protein sequence alignments, and each bar is labelled with the name of the protein that it represents. The solid black line represents the Jensen-Shannon conservation score. Dotted red lines represent SDPs. Previously identified SDPs that were lost in the updated analysis are coloured red, dashed grey lines (dot-dash) represent SDPs that were retained, and dashed blue lines represent new SDPs that have been identified. Note – x-axes differ in their scales between subplots

Of the 20 newly identified SDPs, 10 were mapped onto protein structures (Table 2). Among these SDPs, we identified only one (VP24 R140S) that was likely to have an effect on protein structure and function. This results in nine SDPs overall with high confidence of having an effect on protein structure and function and four with lower confidence (Supplementary Table 19).

The VP24 SDP R140S is located in the VP24 interface site with human karyopherin  $\alpha 5$  (KPNA5; Xu *et al.*, 2014) where four other SDPs are located (T131S, N132T, M136L, and Q139R). R140 can form hydrogen bonds with residues E476 (backbone) and Y477 (sidechain) in KPNA5, and also with the sidechain of E113 in VP24 (Figure 3A,B). Reston virus S140 would still have the potential to form hydrogen bonds but not as extensively as R140. We have previously proposed



**Fig 2: Characteristics of the Specificity Determining Positions (SDPs) between human pathogen Ebolaviruses and Reston virus.** A) BLOSUM62 scores for the whole set of SDPs. B) mCSM predicted stability changes for the whole set of SDPs. C) Relative Solvent Accessibility for the whole set of SDPs.

that T131S, M136L and Q139R were likely to alter the binding of Reston virus VP24 to karyopherins, which may affect the ability of VP24 to inhibit the host interferon response (Pappalardo *et al.*, 2016). The addition of R140S further supports this hypothesis, suggesting that this VP24 interface is vital to determining species-specific pathogenicity. Our hypothesis has recently been supported by experimental studies. Guito *et al.*, (2016) showed that Reston virus VP24 is less effective at inhibiting the human interferon response. Further, histidine is present at residue 140 in Bundibugyo virus VP24 and has been implicated in reduced efficiency of downregulating interferon signalling (Schwarz *et al.* 2017).

### 2.3 Comparison of Bombali virus with the other Ebolaviruses

Phylogenetic analysis of the genome sequences and of six of the seven Ebolavirus proteins grouped Bombali virus with Ebola, Sudan, Tai forest and Bundibugyo viruses, with Sudan and Reston viruses on a separate branch (Supplementary Figure 1). For the seventh Ebolavirus protein, VP30, Bombali virus was grouped with Reston virus and the four known human-pathogenic species were on a separate branch (Supplementary figure 1k,l). While the phylogenetic analysis tends to group Bombali virus with human pathogenic Ebolavirus species, the pathogenic and non-pathogenic species are not clearly separated, making it difficult to infer from this phylogenetics analysis if Bombali virus is likely to be pathogenic in humans.

When considering the SDPs that differentiate human pathogenic and non-pathogenic Ebolaviruses, in Bombali virus the majority of amino acids at these positions (105; 63.25%) were identical to the human pathogenic Ebolaviruses, while 21 (12.65%) were shared between Bombali virus and Reston virus, and 40 (24.10%) were unique to Bombali virus (Supplementary Table 20). For the two available Bombali virus sequences, the amino acids present at SDPs agreed for all but one of the positions (VP24 R140S), where one of the sequences had the amino acid present in the human pathogenic viruses (R), while the other sequence contained the amino acid present in Reston virus (S).

With Bombali virus reported to have a 55–59% similarity to the other Ebolavirus species (Goldstein *et al.*, 2018), the Ebola-Bombali SDP residue similarity is about 15% higher than the overall average, indicating high conservation amongst these positions, consistent with previous findings (Pappalardo *et al.*, 2016). For all of the individual proteins, the Bombali sequences have greater agreement with the amino acids present in human pathogenic species at SDPs (30.0% (VP30) to 77.36% (L)), while the agreement with Reston virus is only 10%-19% (Supplementary Table 20).

**Table 3.** comparison of Bombali virus sequences with the nine SDPs identified as having a likely functional impact on human pathogenicity.

| Protein | SDP   | Bombali agreement |
|---------|-------|-------------------|
| VP24    | T131S | EBOV              |
| VP24    | M136L | RESTV             |
| VP24    | Q139R | RESTV             |
| VP24    | R140S | EBOV/RESTV        |
| VP24    | T226A | EBOV              |
| VP30    | R262A | EBOV              |
| VP35    | E269D | EBOV              |
| VP40    | P85T  | EBOV              |
| VP40    | Q245P | RESTV             |

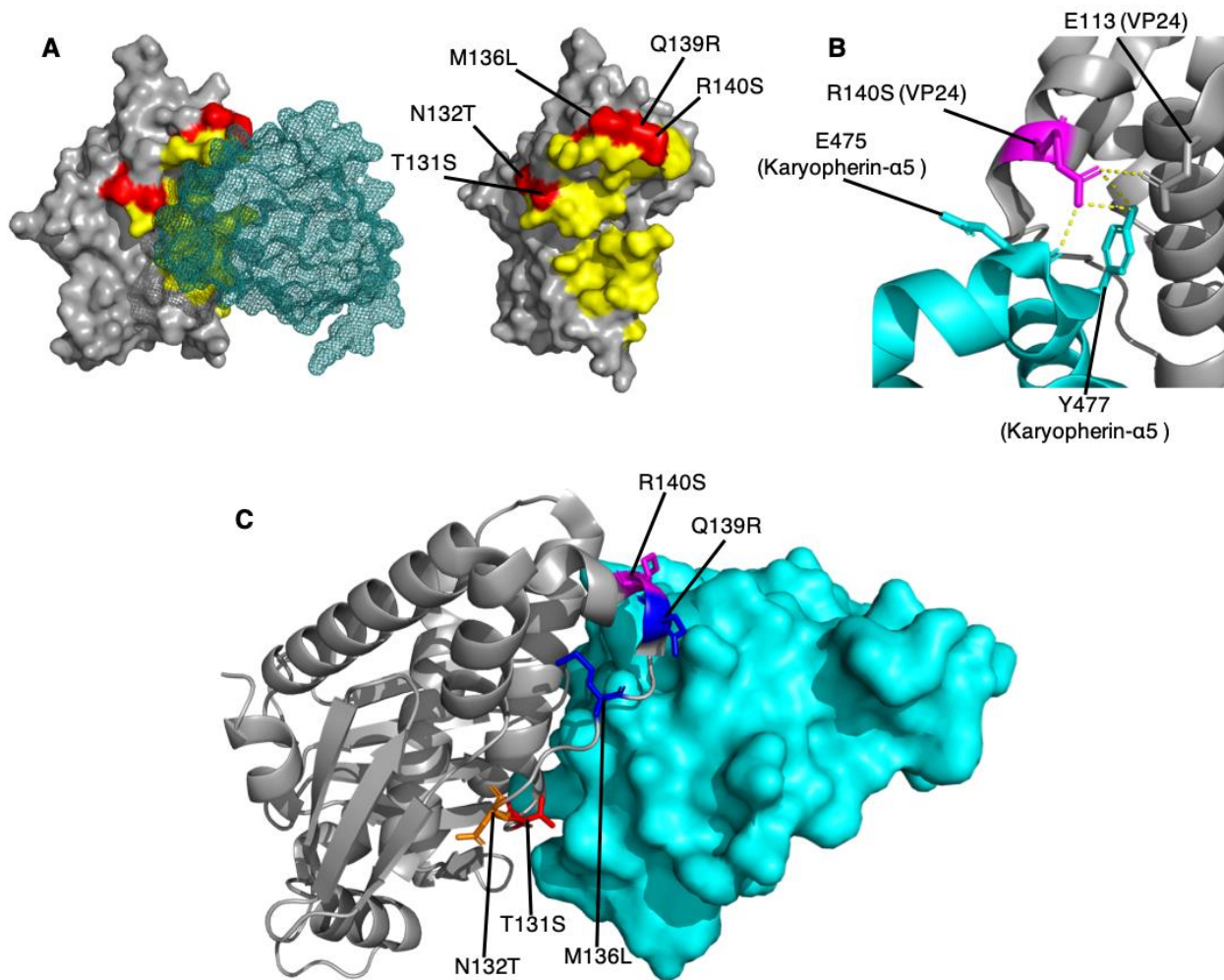
This suggests that Bombali virus is more closely aligned with the human pathogenic Ebolaviruses than with Reston virus. However, this may reflect closer relatedness among the African Ebolaviruses (Ebola virus, Sudan virus, Bundibugyo virus, Tai Forest virus, Bombali virus) compared to the Asian Reston virus, than similarities in human pathogenicity. In the phylogenetic analysis *Bombali virus* does group with most of the human pathogenic species (Supplementary Figure 1).

Of the nine SDPs where we are confident that they are likely to alter protein structure and function (see above), Bombali virus has the same amino acid as the human pathogenic species at five positions and the same as Reston virus for three. The ninth position differs among the two available Bombali virus sequences (VP24 R140S; Table 3). While the majority of amino acids in Bombali virus at SDPs in VP24 agree with human pathogenic Ebolavirus amino acids (73%; Supplementary Table 20), two critical SDPs in the VP24-karyopherin binding region (M136L, Q139R) are identical to Reston virus (Figure 3) (Pappalardo *et al.*, 2016; 2017). Additionally, at residue 132, an SDP which points away from the KPNA5 interface, there is a Bombali virus-specific amino acid (A132; N in EBOV, T in RESTV; Figure 3). This may indicate that the Bombali virus is not be as pathogenic as the human pathogenic Ebolaviruses in humans.

## 3 Discussion

In this study, we have updated our previous analysis of amino acid positions that are differentially conserved (SDPs) between human pathogenic

**Is Bombali virus pathogenic in humans?**



**Fig 3. Specificity Determining Positions in VP24 suggest that Bombali virus may not be pathogenic in humans.** A) SDPs in the VP24-Karyopherin- $\alpha$ 5 interface. VP24 is shown in surface representation (grey) and karyopherin- $\alpha$ 5 is shown as a mesh representation (teal). SDPs in VP24 are shown in red, and all residues within 5Å of karyopherin- $\alpha$ 5 are shown in yellow. B) Hydrogen bonding of the SDP residue R140 in the *Ebola virus* VP24. VP25 (grey) and karyopherin- $\alpha$ 5 (teal) are shown in cartoon format. Hydrogen bonds are represented by blue dashed lines. C) Agreement of *Bombali virus* sequences with the SDPs in the VP24-Karyopherin- $\alpha$ 5 interface. VP24 (grey) is shown in cartoon representation, and Karyopherin- $\alpha$ 5 (teal) is shown in surface representation. SDPs are shown in stick format, and coloured red where Bombali and Ebola virus agree, blue where Bombali virus agrees with Reston virus, orange where the Bombali virus amino acid is unique, and magenta where the amino acid present in the two Bombali virus sequences differ and one agrees with Ebola virus and the other with Reston virus.

Ebolaviruses and the non-human pathogenic Reston virus by the inclusion of more than 1,200 additional genome sequences. We have also analysed the amino acids present in Bombali virus at the SDPs to infer whether Bombali virus may cause disease in humans.

Our updated analysis of the SDPs that distinguish Reston virus from the four known human pathogenic Ebolavirus species, reduced the number of SDPs from 180 to 166. The vast majority of SDPs were retained from the original analysis, including all the SDPs that we have proposed are likely to affect protein structure and function and may have a role in determining pathogenicity. This demonstrates that our initial study using only 196 genomes provided robust results. While we have identified a small subset of SDPs that we propose may be associated with pathogenicity, this reflects those SDPs that we have been able to map to protein structure and use analysis of structures to identify a likely functional effect. It is of course possible that some of the SDPs that we have not been able to propose a functional effect for may have a role in determining pathogenicity. However, our updated results also further strengthen our findings that VP24 is

central to determining host-specific pathogenicity (Pappalardo *et al.*, 2016; 2017), a notion that is further supported by experimental evidence showing that Reston virus VP24 is less effective than the other Ebolavirus VP24 proteins at inhibiting the host immune response (Guito *et al.*, 2016). Since the number of available Reston virus sequences remains small, particularly compared to the number of sequences across the four human pathogenic species, a larger number of Reston virus sequences would likely further refine the set of SDPs by capturing the variation within Reston viruses.

Our analysis of the Bombali virus sequence at the SDPs identified overall greater agreement with the human pathogenic Ebolaviruses. This could be the consequence of the common African origin of the human pathogenic Ebolaviruses and the Bombali virus, in contrast to the Asian Reston virus. The amino acids at SDPs in VP24 that we propose are most important in determining human pathogenicity are the same in Bombali virus and Reston virus. This suggests that Bombali virus may not be pathogenic, or have reduced pathogenicity, in humans. This is supported by the fact that

Bombali virus was isolated from fruit bats, which were cohabitating in houses and other populated areas (Goldstein *et al.*, 2018) and although this makes human contact highly likely, no disease outbreaks have been reported. Further, a study in the Bombali region detected anti-Ebola virus NP antibodies in humans without reports of disease (Mafopa *et al.*, 2017). Although originally interpreted as evidence for asymptomatic Ebola virus infection, it is possible that this test actually detected antibodies against the then unknown Bombali virus that cross-reacted with Ebola virus antigen. Hence, antibodies directed against Ebolavirus proteins may indicate exposure of humans to low- or non-human pathogenic Bombali virus in the Bombali region.

In conclusion, based on our findings Bombali virus may be non-pathogenic or of low pathogenicity in humans. However, since few mutations seem to be sufficient for Ebolavirus adaptation to a new species (Pappalardo *et al.*, 2017), human pathogenic Bombali viruses may emerge, in particular as the Bombali virus shares many more conserved amino acid positions with human pathogenic Ebolaviruses than the non-human pathogenic Reston virus and further human contact with Bombali virus is likely to occur.

*Conflict of Interest:* none declared.

## References

- Baseler, L., Chertow, D. S., Johnson, K. M., Feldmann, H., & Morens, D. M. (2017). The Pathogenesis of Ebola Virus Disease. *Annual Review of Pathology*, *12*(1), 387–418.
- Cantoni, D. *et al.* (2016) Risks Posed by Reston, the Forgotten Ebolavirus. *mSphere*, *1*, e00322–16.
- Chanthamontri, C.K. *et al.* (2018) Ebola Viral Protein 35 N-terminus is a Parallel Tetramer. *Biochemistry*, acs.biochem.8b01154.
- Coltart, C.E.M. *et al.* (2017) The Ebola outbreak, 2013–2016: old lessons for new epidemics. *Philos. Trans. R. Soc. Lond., B, Biol. Sci.*, **372**, 20160297.
- Goldstein, T. *et al.* (2018) The discovery of Bombali virus adds further support for bats as hosts of ebolaviruses. *Nat Microbiol*, *3*, 1084–1089.
- Guito, J.C. *et al.* (2016) Novel activities by ebolavirus and marburgvirus interferon antagonists revealed using a standardized in vitro reporter system. *Virology*, **501**, 147–165.
- Lo, T.Q. *et al.* (2017) Ebola: Anatomy of an Epidemic. *Annu. Rev. Med.*, **68**, 359–370.
- Mafopa, N.G. *et al.* (2017) Seroprevalence of Ebola virus infection in Bombali District, Sierra Leone. *J Public Health Afr*, *8*, 732.
- Michaelis, M. *et al.* (2016) Computational analysis of Ebolavirus data: prospects, promises and challenges. *Biochemical Society Transactions*, **44**, 973–978.
- Miranda, M.E.G. and Miranda, N.L.J. (2011) Reston ebolavirus in humans and animals in the Philippines: a review. *J. Infect. Dis.*, **204 Suppl 3**, S757–60.
- Pappalardo, M. *et al.* (2016) Conserved differences in protein sequence determine the human pathogenicity of Ebolaviruses. *Sci Rep*, *6*, 23743.
- Pappalardo, M., Collu, F., *et al.* (2017) Investigating Ebola virus pathogenicity using molecular dynamics. *BMC Genomics*, **18**, 566.
- Pappalardo, M., Reddin, I., *et al.* (2017) Changes associated with Ebola virus adaptation to novel species. *Bioinformatics*, **33**, 1911–1915.
- Rausell, A., Juan, D., Pazos, F., & Valencia, A. (2010). Protein interactions and ligand binding: From protein subfamilies to functional specificity. *Proceedings of the National Academy of Sciences*, *107*(5), 1995–2000.
- Schwarz, T. M., Edwards, M. R., Diederichs, A., Alinger, J. B., Leung, D. W., Amarasinghe, G. K., & Basler, C. F. (2017). VP24-Karyopherin Alpha Binding Affinities Differ between Ebolavirus Species, Influencing Interferon Inhibition and VP24 Stability. *Journal of Virology*, *91*(4), e01715–16.
- Xu, W. *et al.* (2014) Ebola virus VP24 targets a unique NLS binding site on karyopherin alpha 5 to selectively compete with nuclear import of phosphorylated STAT1. *Cell Host Microbe*, **16**, 187–200.
- Zinzula, L. *et al.* (2019) Structures of Ebola and Reston Virus VP35 Oligomerization Domains and Comparative Biophysical Characterization in All Ebolavirus Species. *Structure*, *27*, 39–54.e6.