



# Kent Academic Repository

**Manwar, Rayyan, Zafar, Mohsin, Podoleanu, Adrian G.H. and Avanaki, Mohammad (2019) *An Application of Simulated Annealing in Compensation of Nonlinearity of Scanners*. Applied Sciences, 9 (8). ISSN 2076-3417.**

## Downloaded from

<https://kar.kent.ac.uk/73582/> The University of Kent's Academic Repository KAR

## The version of record is available from

<https://doi.org/10.3390/app9081655>

## This document version

Publisher pdf

## DOI for this version

## Licence for this version

CC BY (Attribution)

## Additional information

## Versions of research works

### Versions of Record

If this version is the version of record, it is the same as the published version available on the publisher's web site. Cite as the published version.

### Author Accepted Manuscripts

If this document is identified as the Author Accepted Manuscript it is the version after peer review but before type setting, copy editing or publisher branding. Cite as Surname, Initial. (Year) 'Title of article'. To be published in *Title of Journal*, Volume and issue numbers [peer-reviewed accepted version]. Available at: DOI or URL (Accessed: date).

## Enquiries

If you have questions about this document contact [ResearchSupport@kent.ac.uk](mailto:ResearchSupport@kent.ac.uk). Please include the URL of the record in KAR. If you believe that your, or a third party's rights have been compromised through this document please see our [Take Down policy](https://www.kent.ac.uk/guides/kar-the-kent-academic-repository#policies) (available from <https://www.kent.ac.uk/guides/kar-the-kent-academic-repository#policies>).

Article

# An Application of Simulated Annealing in Compensation of Nonlinearity of Scanners

Rayyan Manwar <sup>1</sup>, Mohsin Zafar <sup>1</sup>, Adrian Podoleanu <sup>2</sup> and Mohammad Avanaki <sup>1,3,4,\*</sup>

<sup>1</sup> Department of Biomedical Engineering, Wayne State University, Detroit, MI 48201, USA; r.manwar@wayne.edu (R.M.); mohsin.zafar@wayne.edu (M.Z.)

<sup>2</sup> School of Physical Science, University of Kent, Canterbury, Kent CT2 7NZ, UK; a.g.h.podoleanu@kent.ac.uk

<sup>3</sup> Department of Dermatology, Wayne State University School of Medicine, Detroit, MI 48201, USA

<sup>4</sup> Barbara Ann Karmanos Cancer Institute, Detroit, MI 48201, USA

\* Correspondence: mrm.avanaki@wayne.edu; Tel.: +1-313-577-0703

Received: 22 November 2018; Accepted: 8 April 2019; Published: 22 April 2019



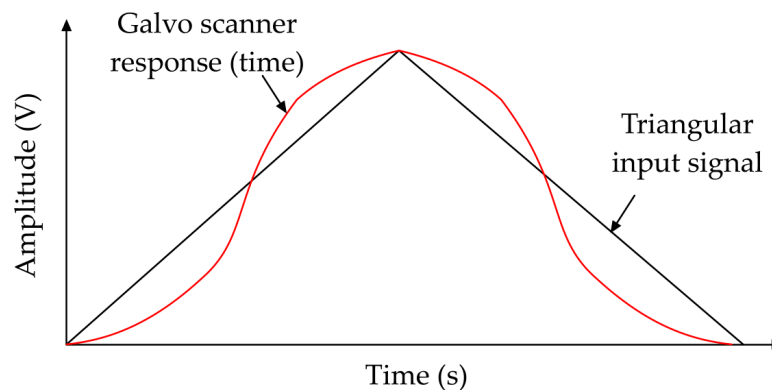
**Abstract:** Galvo scanners are popular devices for fast transversal scanning. A triangular signal is usually employed to drive galvo scanners at scanning rates close to the inverse of their response time where scanning deflection becomes a nonlinear function of applied voltage. To address this, the triangular signal is synthesized from several short ramps with different slopes. An optimization algorithm similar to a simulated annealing algorithm is used for finding the optimal signal shape to drive the galvo scanners. As a result, a significant reduction in the nonlinearity of the galvo scanning is obtained.

**Keywords:** optimization; algorithm; galvo scanner; nonlinearity; simulation

## 1. Introduction

Two orthogonal scanners are generally required in the implementation of any optical system based on flying spot for transversal scanning [1–3]. Galvo scanners are made of high-speed, current sensitive, limited rotation electrical motors which spin mounted mirrors [2,4,5]. The amount of rotation is determined by the current or voltage applied [6,7]. A galvo-scanner is composed of a small coil of wire wound on an armature that is suspended in the gap of a moving permanent magnetic field by means of pivots and bearings [2,8]. When the coil is flown by a current, it develops a magnetic field that acts against the static field in the gap, causing the coil to rotate [7]. Such scanners can be operated in open or closed loops [4]. To operate in a closed loop, the galvo scanner is equipped with a position sensing device and a position correction device. Feedback signals are sent from a driver to stabilise and linearize the angular deviation. A position detection device can be constructed using a vane that occludes the light from a light emitting diode (LED) falling onto a photodetector [9]. The algorithm implemented in the driver circuit compares the actual position of the mirror with the expected position for the given applied voltage [10,11]. The driver generates an error correction signal which is combined with the input signal. Despite this correction, at high rates, the angular deviation becomes nonlinear [12]. Galvo-scanners are mainly driven by triangular or saw-tooth signals. The frequency range of the signal is limited by the mechanical design of the galvo-scanner [13]. One common problem with galvo-scanners, when driven at high rates, is that they are not able to follow the shape of the input signal perfectly. Therefore, they do not perform as expected (see Figure 1), and create artefacts in the acquired signal [14–18]. Several procedures are known to correct for such nonlinearities, the most popular one being to alter the image depending on the position signal. This however requires a specialized frame grabber, complex software, and expensive galvo-scanners, equipped with position

sensors. Alternatively, if the shape of the voltage signal sent to the galvo scanner can be amended to slightly deviate from that of a ramp, it becomes possible to reduce the artefacts [19].



**Figure 1.** A Triangular signal (solid black) and the response function of a typical galvo (solid red). The scanner smooths the shape of the triangular signal as it cannot follow the abrupt slope changes.

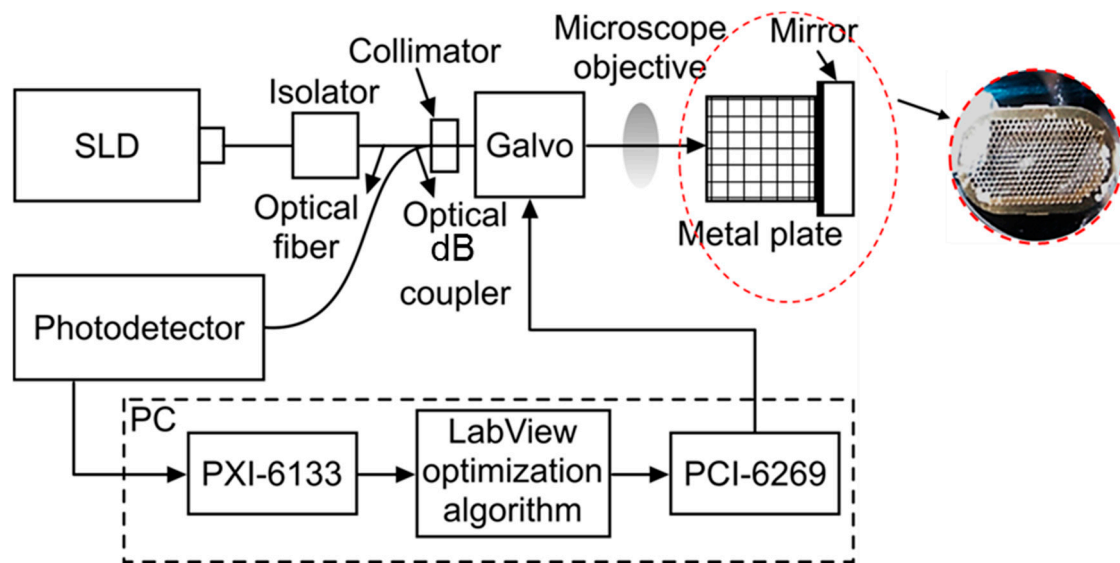
In this study, an optimization algorithm, based on a simulated annealing (SA) algorithm [20–26], is developed to synthesize the optimal shape of the signal applied to the fast galvo-scanner in the scanning head. The reconstructed signal is composed of many small linear signals with different slopes. The algorithm finds the best set of slopes. However, while the resultant shape of the input voltage to the galvo-scanner is not saw-tooth or triangular anymore, a significant reduction in the nonlinearity of the scanner is obtained.

## 2. Materials and Methods

The optical setup is composed of a Mach–Zehnder fiber interferometer that uses a super luminescent diode (SLD) with a central wavelength of 1300 nm and a spectral bandwidth of 25 nm. Both the reference and sample were in the same arm in this configuration of interferometer. To avoid light being sent back into the source, the coupling was performed via an optical isolator (ISO). The light was sent to a directional optical fiber coupler. It was then collimated and sent to a scanning head made of two galvo-scanners (#6110, Cambridge Technology CO., Bedford, MA, USA). The light reflected off the mirrors are focused on the sample using a microscope objective (LSM02, Thorlabs, Newton, NJ, USA); the effective focal length of the lens is 18 mm and the working distance is 7.5 mm. The sample is a metal plate consisting of a regular pattern of equidistant hexagonal holes, with the size of 100 microns. The plate is placed 3 mm in front of the sample mirror. The spot size of the light on the sample mirror is much smaller than the size of the hexagonal hole in the plate.

The distance between the metal grid and the mirror helped separate, by depth, the reflections of the mirror from the reflections of the metal grid. Both the mirrors are PF-10-03 (Thorlabs, Newton, NJ, USA). The back-reflected light from the sample and mirror is detected using a balanced photodetector (Newfocus, 80 MHz electronic bandwidth, Newport, Irvine, CA, USA), with internal adjustable gain. More details of the design of this system are described in [27]. The hardware configuration of the compensation/optimization system is shown in Figure 2.

The galvo-mirror is driven by a triangular signal of 5-volt peak-to-peak. Although the pattern of the holes is periodic, the spikes did not look equidistant due to the nonlinearity of the scanning. As a result, the peak produced by a fast Fourier transform (FFT) of the photodetected signal is not narrow around the frequency component given by  $2n/T$ , where  $T$  is the period of the input triangular signal and  $n$  is the number of slits in the metal plate. Our aim is to alter the shape of each ramp in the triangular signal, using an optimization algorithm [22,28–34], until the photodetected signal presented maximum regularity in the succession of peaks corresponding to the beam being scanned over regularly placed empty spaces, to produce equidistant spikes, and narrow the FFT peak.



**Figure 2.** The experimental setup of the compensation/optimization system. Metal plate with hexagonal holes in front of the scanning probe head (outlined with red broken line).

The optimization procedure is as follows: An initial triangular signal is sent to the galvo-scanner driver through a PCI-6229 (PCI output card, National Instrument, Austin, TX, USA). The photodetector signal is then acquired into a computer by a PXI-6133 (PCI input card, National Instrument, Austin, TX, USA). A LabVIEW<sup>®</sup> program is specially developed for data acquisition. The sampling rate for the output and input cards are 800,000 S/s and 50,000 S/s, respectively. The photodetector signal passed through a high pass filter and then is subject to a fast Fourier transformed (FFT). The high pass filter filtered out the strong low frequency components close to the repetition frequency. The peak of the FFT, corresponding to the fundamental frequency of the scan over the regular pattern of holes, is then considered as the cost function of the optimization algorithm. The frequency is calculated as twice the frequency of the triangular signal times the number of holes scanned. The optimization algorithm is written in LabVIEW using MathScript. The optimization algorithm produces a curved triangular signal composed of  $n$  ramps. A slope is evaluated for each two samples to create a short ramp (in total  $n/2$  short lines). The short ramps with different slopes are connected to each other to build the curved triangular signal. The algorithm then reconstructs the driving signal (that approximates a triangular signal) using a combination of a positive right ramp with a negative left ramp. The first (growing) ramp is generated using the optimization algorithm, and the next (decreasing) ramp is obtained by mirroring the left ramp with respect to the  $y$ -axis.

The initial normalized value of all tiny slopes is 1. This means that the initial signal to drive the scanners was a triangular signal. The optimization algorithm alters the slopes of the short ramps and hence the shape of the driving signal iteratively in such a way that the FFT spectrum of the photodetected signal became narrower and the peak of the main component in the spectrum taller. There are two main loops in the optimization algorithm as explained in Algorithm 1: A local search loop (LSL) alters the slope of each short ramp randomly in the range of +0.01 to +0.3 with steps of 0.01; A global search loop (GSL) alters the slope of each short ramp randomly in the range of +1 to +3 with a step of 0.01. As explained in [35,36], the use of the global search in the optimization algorithm is necessary to find an optimum around which the global optimum can be found through the local search loop. The algorithm continues until a certain number of iterations is reached or until the rate of improvement becomes too slow (<1%). In the optimization algorithm, attention is paid to: (1) the range of the perturbation of the slopes in the local and global search loops and (2) the appropriate length of the signal that FFT is applied to. In this study, the algorithm stopped after 10,000 iterations, however, in most cases it has converged after around 4000 iterations. For 10,000 iterations, the algorithm took about 5 s using a quad core 3 GHz PC with 16 GB RAM.

In general, if a computing task is well-suited to single instruction multiple data (SIMD) parallelization then it will be well-suited to computation on a GPU. The data-parallel computations with high arithmetic intensity exist in our algorithm were able to attain maximum performance from a GPU. This was because the volume of very fast arithmetic instruction can ‘hide’ the relatively slow memory accesses. We are in the process of implementing the code in a GPU (XFX-AMD Radeon RX 580 GTS, Advanced Micro Devices, Austin, TX, USA) following the method described in [37]. Based on the initial preview, for 100,000 iterations, the algorithm takes about 400 ms.

---

**Algorithm 1.**


---

**Start:**

```

Initialization
Send an initial slope vector (1) to reconstruct a triangular signal
Record the peak of FFT (PFFT) as BestMax
Record the slope vector as BestShape
Loop (local search loop (LSL)):
    Perturb slopes in the interval [0.1 0.3]
    If PFFT > BestMax
        BestMax = PFFT
        Update BestShape
    Endif
Loop (global search loop (GSL))
    Perturb slopes in the interval [1 3]
    If PFFT > BestMax
        BestMax = PFFT
        Update BestShape
    Endif
Endloop (GSL)
Endloop (LSL)

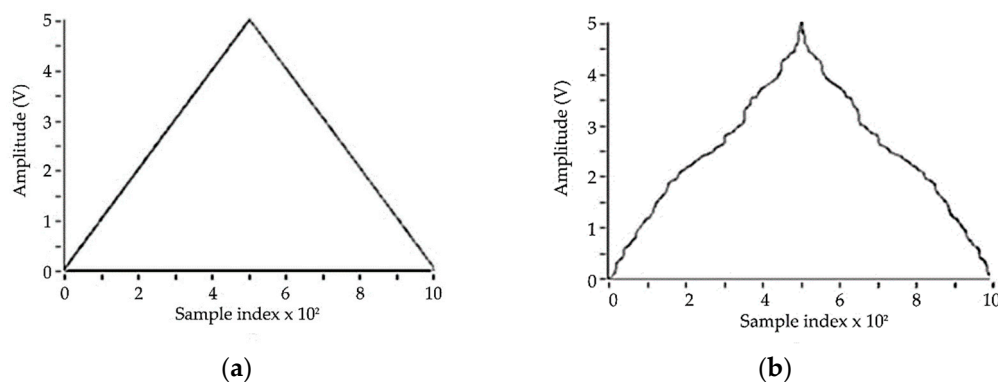
```

**End**


---

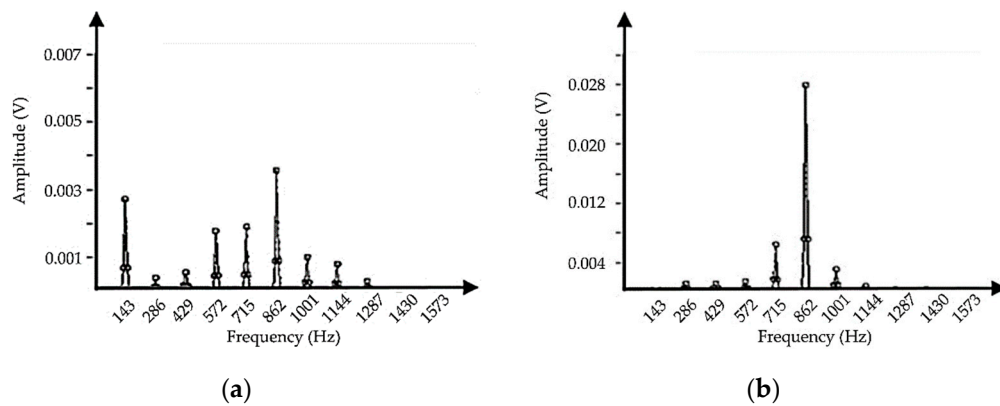
**3. Results**

The optimization algorithm was implemented in LabVIEW on a quad core computer with 16 GB memory. We used 100 short ramps to reconstruct the triangular signal; each ramp was constructed using 2 samples. The typical frequency of the triangular signal input to the fast galvo-scanner was around 500 Hz. Therefore, we tested our optimization method at three frequencies: 862 Hz, 697 Hz, and 308 Hz. The reference shape of the triangular signal sent to the galvo scanner is shown in Figure 3a. The amplitude of the signal is 5-volt peak to peak.



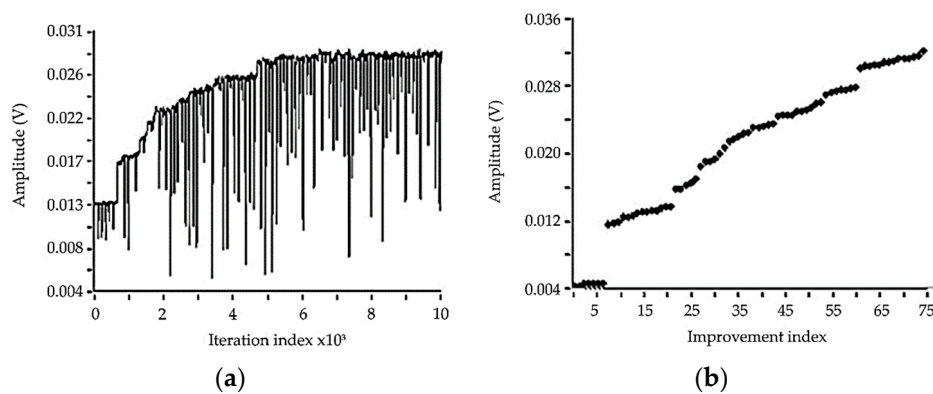
**Figure 3.** The reconstructed triangular signal with a frequency of 862 Hz (a) before optimization, (b) after optimization.

In the first attempt, the frequency of the triangular signal was 862 Hz. The triangular signals before and after the optimization are given in Figure 3a,b, respectively. The corresponding FFT of these signals are shown in Figure 4a,b.



**Figure 4.** FFT of the photodetector signal while imaging the metal plate object, (a) before optimization, (b) after optimization. The frequency of the triangular signal was 862 Hz.

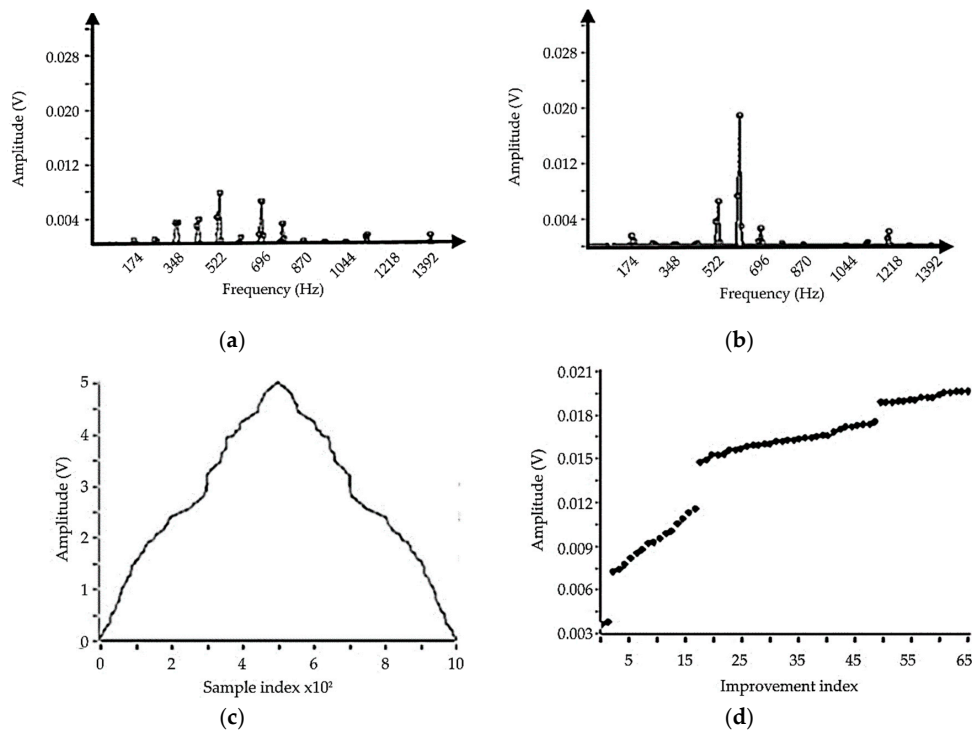
The optimization algorithm improved the peak of the FFT signal during 10,000 iterations from 0.0035 to 0.029 V (~10 times). The peak amplitude of the FFT during the optimization was significantly improved, and the spectral width of the optimized signal became narrower. The graph showing the peak of FFT recorded during the optimization process as well as the improvement profile of the peak of the FFT, are given in Figure 5a,b, respectively. As shown in Figure 5a, during the global search loop of the optimization algorithm, the algorithm occasionally generates signals with low FFT signal amplitude. This part of the algorithm is similar to the Boltzmann loop [35,36] in the simulated annealing algorithm which prevents the algorithm from being trapped into a local optimum.



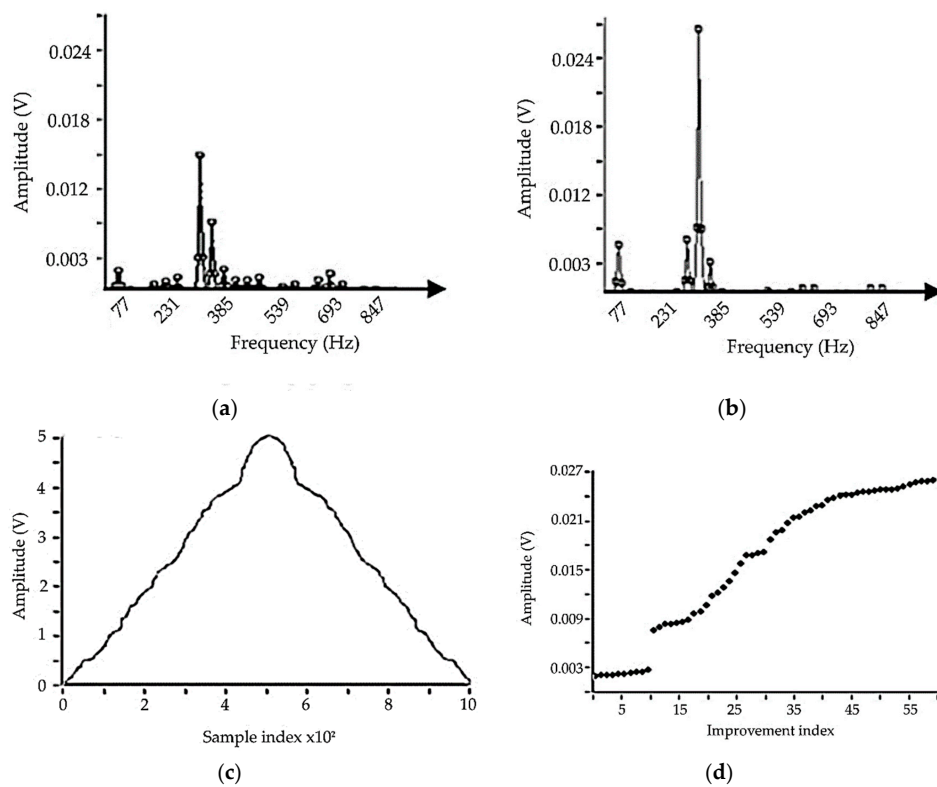
**Figure 5.** Improvement in the amplitude of the FFT signal during the optimization process. (a) Variation of the FFT amplitude during the optimization process, (b) improvement profile of only “the improved FFT amplitudes” during the optimization process. The frequency of the triangular signal was 862 Hz.

The compensation system was tested on two more triangular signals with frequencies of 697 Hz, and 308 Hz. The results are shown in Figures 6 and 7.

We also tested using several ramps to reconstruct the triangular signal. The preliminary results showed an approximately two-fold increase when we used two samples per ramp instead of 10 (the number used in all the above experiments). The computation, however, became more expensive (it took four times longer).



**Figure 6.** FFT of the photodetector signal while imaging the metal plate object, (a) before optimization and (b) after optimization. (c) The reconstructed triangular signal after the optimization process, (d) improvement profiles of only “the selected FFT component” during the optimization process. The frequency of the triangular signal was 697 Hz.



**Figure 7.** FFT of the photodetector signal while imaging the metal plate object, (a) before optimization and (b) after optimization. (c) The reconstructed triangular signal after the optimization process, (d) improvement profile of only “the improved FFT amplitudes” during the optimization process. The frequency of the triangular signal was 308 Hz.

#### 4. Discussion and Conclusions

In this study, we demonstrated an approach to compensate for the nonlinearity of the galvo scanners in optical imaging/sensing setups with a transversal scanning. We used an optimization algorithm based on a simulated annealing method by altering the shape of the signal using connected small ramps with different slopes, iteratively, until the equidistant structures in a calibration target produced equidistant features in the image. The compensation technique was evaluated at different frequencies of the triangular signal, one below the typical frequency, i.e., 500 Hz, and two above it, i.e., 697 Hz and 862 Hz. As expected, the nonlinearity was more apparent at larger frequencies, using more samples to synthesize the short ramps, which increased the total number of samples in the driving signal. This required an output card with a higher rate, i.e., a more expensive card.

An immediate correction would have consisted of maintaining the linearity of the signal in the middle and accelerating the variation close to the turnaround point. The method presented can be applied to open loop scanners, allowing for lower cost systems to be implemented. For each galvo-scanner, the optimum voltage shape can be found and then the shape can be stored in a register or, a nonlinear analogue signal generator can be used.

Compared to other methods proposed for compensation of nonlinearity of galvo-scanners [10–13,18], this method is inexpensive, fast, does not require a sophisticated theoretical analysis, and it is easy to perform.

The proposed method can be easily used in optical coherence tomography (OCT) and photoacoustic microscopy imaging techniques to acquire a more accurate images from the tissue microstructures [38–43].

**Author Contributions:** Conceptualization, M.A.; methodology, R.M., A.P., and M.A.; software, R.M., M.Z., and M.A.; validation, R.M., A.P., and M.A.; formal analysis, R.M. and M.Z.; writing—original draft preparation, R.M. and M.Z.; writing—review and editing, A.P. and M.A.; visualization, R.M.; supervision, M.A.

**Funding:** This research received no external funding.

**Acknowledgments:** We thank Adrian Bradu for his insightful comments. Adrian Podoleanu acknowledges NIHR Biomedical Research Centre at Moorfields Eye Hospital NHS Foundation Trust; the UCL Institute of Ophthalmology.

**Conflicts of Interest:** The authors declare no conflict of interest.

#### References

1. Podoleanu, A.G. *Optical Coherence Tomography*; The British Journal of Radiology: Canterbury, UK, 2014.
2. Shanmugasundaram, A.; Palani, R. *Electrical Machine Design Data Book*; New Age International: New Delhi, Delhi, 1979.
3. Hojjatoleslami, A.; Avnaki, M.R. OCT skin image enhancement through attenuation compensation. *Appl. Opt.* **2012**, *51*, 4927–4935. [[CrossRef](#)] [[PubMed](#)]
4. Mnerie, C.; Preitl, S.; Duma, V.-F. Mathematical model of a galvanometer-based scanner: Simulations and experiments. In Proceedings of the SPIE Optical Metrology 2013, Munich, Germany, 13 May 2013; p. 878915.
5. Hariri, A.; Fatima, A.; Avnaki, M.R.N. A Novel Library for the Correction of a Galvo-Scanner's Non-Linearity at High Frequencies. *Res. J. Opt. Photonics* **2018**, *2*. Available online: [https://www.scitechnol.com/peer-review/a-novel-library-for-the-correction-of-a-galvoscaners-nonlinearity-at-high-frequencies-Lrx1.php?article\\_id=8033](https://www.scitechnol.com/peer-review/a-novel-library-for-the-correction-of-a-galvoscaners-nonlinearity-at-high-frequencies-Lrx1.php?article_id=8033) (accessed on 20 March 2019).
6. Li, Y. Beam deflection and scanning by two-mirror and two-axis systems of different architectures: A unified approach. *Appl. Opt.* **2008**, *47*, 5976–5985. [[CrossRef](#)]
7. Li, Y. Third-order theory of the Risley-prism-based beam steering system. *Appl. Opt.* **2011**, *50*, 679–686. [[CrossRef](#)]
8. Aylward, R.P. Advanced galvanometer-based optical scanner design. *Sens. Rev.* **2003**, *23*, 216–222. [[CrossRef](#)]
9. Tao, X.; Cho, H.; Janabi-Sharifi, F. Optical design of a variable view imaging system with the combination of a telecentric scanner and double wedge prisms. *Appl. Opt.* **2010**, *49*, 239–246. [[CrossRef](#)]
10. Podoleanu, A.G.; Dobre, G.M.; Jackson, D.A. En-face coherence imaging using galvanometer scanner modulation. *Opt. Lett.* **1998**, *23*, 147–149. [[CrossRef](#)]



11. Duma, V.-F. Optimal scanning function of a galvanometer scanner for an increased duty cycle. *Opt. Eng.* **2010**, *49*, 103001. [[CrossRef](#)]
12. Aylward, R.P. Advances and technologies of galvanometer-based optical scanners. In Proceedings of the SPIE's International Symposium on Optical Science, Engineering, and Instrumentation, Denver, CO, USA, 2 July 1999; pp. 158–164.
13. Gadhok, J.S. Achieving high-duty cycle sawtooth scanning with galvanometric scanners. In Proceedings of the SPIE 3787, Optical Scanning: Design and Application, Denver, CO, USA, 2 July 1999; pp. 173–180.
14. Montagu, J. Galvanometric and resonant scanners. *Opt. Eng. N. Y. Marc. Dekk. Inc.* **2004**, *90*, 417–476.
15. Avanaki, M.R.; Hojjat, A.; Podoleanu, A.G. Investigation of computer-based skin cancer detection using optical coherence tomography. *J. Mod. Opt.* **2009**, *56*, 1536–1544. [[CrossRef](#)]
16. Avanaki, M.R.; Hojjatoleslami, A.; Sira, M.; Schofield, J.B.; Jones, C.; Podoleanu, A.G. Investigation of basal cell carcinoma using dynamic focus optical coherence tomography. *Appl. Opt.* **2013**, *52*, 2116–2124. [[CrossRef](#)]
17. Avanaki, M.R.; Podoleanu, A.G.; Schofield, J.B.; Jones, C.; Sira, M.; Liu, Y.; Hojjat, A. Quantitative evaluation of scattering in optical coherence tomography skin images using the extended Huygens–Fresnel theorem. *Appl. Opt.* **2013**, *52*, 1574–1580. [[CrossRef](#)] [[PubMed](#)]
18. Hojjatoleslami, S.; Avanaki, M.; Podoleanu, A.G. Image quality improvement in optical coherence tomography using Lucy–Richardson deconvolution algorithm. *Appl. Opt.* **2013**, *52*, 5663–5670. [[CrossRef](#)]
19. Duma, V.-F.; Lee, K.-S.; Meemon, P.; Rolland, J.P. Experimental investigations of the scanning functions of galvanometer-based scanners with applications in OCT. *Appl. Opt.* **2011**, *50*, 5735–5749. [[CrossRef](#)] [[PubMed](#)]
20. Rutenbar, R.A. Simulated annealing algorithms: An overview. *IEEE Circuits Devices Mag.* **1989**, *5*, 19–26. [[CrossRef](#)]
21. Nasiri-Avanaki, M.-R.; Hojjatoleslami, S.A.; Paun, M.; Tuohy, S.; Meadway, A.; Dobre, G.; Podoleanu, A.G. Optical coherence tomography system optimization using simulated annealing algorithm. In Proceedings of the 11th WSEAS international conference on Mathematical methods and computational techniques in electrical engineering, Athens, Greece, 28 September 2009; pp. 669–674.
22. Avanaki, M.R.; Hojjatoleslami, S.; Meadway, A.; Dobre, G.; Podoleanu, A.G. Adaptive optics with simulated annealing in confocal microscopy. In Proceedings of the Iranian Conference, Mathematical Methods and Applied Computing, Isfahan, Iran, 27–28 October 2010; pp. 160–161.
23. Nasirivanaki, M.; Xia, J.; Wan, H.; Bauer, A.Q.; Culver, J.P.; Wang, L.V. High-resolution photoacoustic tomography of resting-state functional connectivity in the mouse brain. *Proc. Natl. Acad. Sci. USA* **2014**, *111*, 21–26. [[CrossRef](#)] [[PubMed](#)]
24. Avanaki, M.R.; Laissue, P.P.; Eom, T.J.; Podoleanu, A.G.; Hojjatoleslami, A. Speckle reduction using an artificial neural network algorithm. *Appl. Opt.* **2013**, *52*, 5050–5057. [[CrossRef](#)] [[PubMed](#)]
25. Fayyaz, Z.; Mohammadian, N.; Salimi, F.; Fatima, A.; Tabar, M.R.R.; Avanaki, M.R. Simulated annealing optimization in wavefront shaping controlled transmission. *Appl. Opt.* **2018**, *57*, 6233–6242. [[CrossRef](#)]
26. Fayyaz, Z.; Salimi, F.; Mohammadian, N.; Fatima, A.; Tabar, M.R.R.; Avanaki, M.R. Wavefront shaping using simulated annealing algorithm for focusing light through turbid media. In Proceedings of the Photons Plus Ultrasound: Imaging and Sensing 2018, San Francisco, CA, USA, 22 February 2018; p. 104946M.
27. Trifanov, I.; Neagu, L.; Bradu, A.; Ribeiro, A.L.; Podoleanu, A.G. Characterization of a fibre optic swept laser source at 1  $\mu\text{m}$  for optical coherence tomography imaging systems. In Proceedings of the Optical Coherence Tomography and Coherence Domain Optical Methods in Biomedicine XV, San Francisco, CA, USA, 11 February 2011; p. 78892T.
28. Avanaki, M.; Long, Y.; Paun, M.-A.; Hojjatoleslami, S.; Podoleanu, A.G. Fast algorithm for blind optimization of optical systems. Statistics and methodology. *J. Optoelectron. Adv. Mater.* **2012**, *14*, 976–982.
29. Avanaki, M.R.; Hojjatoleslami, S.; Sarmadi, H.; Ebrahimpour, R.; Podoleanu, A.G. Genetic algorithm for optimization of optical systems. In Proceedings of the 2010 18th Iranian Conference on Electrical Engineering, Isfahan, Iran, 11–13 May 2010; pp. 172–176.
30. Avanaki, M.R.; Khoshki, R.M.; Hojjatoleslami, S.; Podoleanu, A.G. Sensor-less aberration correction in optical imaging systems using blind optimization. In Proceedings of the Third Asia Pacific Optical Sensors Conference, Sydney, Australia, 30 January 2012; p. 83510B.

31. Avanaki, M.R.; Podoleanu, A.; Sarmadi, H.; Meadway, A.; Hojjatoleslami, S. Blind optimization for aberration correction in confocal imaging system. In Proceedings of the 2010 6th Iranian Conference on Machine Vision and Image Processing, Isfahan, Iran, 27–28 October 2010; pp. 1–5.
32. Mahmoodkalayeh, S.; Lu, X.; Ansari, M.A.; Li, H.; Nasirivanaki, M. Optimization of light illumination for photoacoustic computed tomography of human infant brain. In Proceedings of the Photons Plus Ultrasound: Imaging and Sensing 2018, San Francisco, CA, USA, 26 February 2018; p. 104946U.
33. Nasiri Avanaki, M.R. Image Enhancement Algorithms and System Optimization for Optical Coherence Tomography. Ph.D. Thesis, University of Kent, Canterbury, UK, 2011.
34. Tes, D.; Kratkiewicz, K.; Aber, A.; Horton, L.; Zafar, M.; Arafat, N.; Fatima, A.; Avanaki, M.R. Development and Optimization of a Fluorescent Imaging System to Detect Amyloid- $\beta$  Proteins: Phantom Study. *Biomed. Eng. Comput. Biol.* **2018**, *9*, 1179597218781081. [[CrossRef](#)] [[PubMed](#)]
35. Kirkpatrick, S. Optimization by simulated annealing: Quantitative studies. *J. Stat. Phys.* **1984**, *34*, 975–986. [[CrossRef](#)]
36. Paun, M.; Avanaki, M.; Dobre, G.; Hojjat, A.; Podoleanu, A. Wavefront aberration correction in single mode fibre systems. *J. Optoelectron. Adv. Mater.* **2009**, *11*, 1681–1685.
37. Ferreiro, A.M.; García, J.; López-Salas, J.G.; Vázquez, C. An efficient implementation of parallel simulated annealing algorithm in GPUs. *J. Glob. Optim.* **2013**, *57*, 863–890. [[CrossRef](#)]
38. Adabi, S.; Fotouhi, A.; Xu, Q.; Daveluy, S.; Mehregan, D.; Podoleanu, A.; Nasirivanaki, M. An overview of methods to mitigate artifacts in optical coherence tomography imaging of the skin. *Ski. Res. Technol.* **2018**, *24*, 265–273. [[CrossRef](#)]
39. Adabi, S.; Hosseinzadeh, M.; Noei, S.; Conforto, S.; Daveluy, S.; Clayton, A.; Mehregan, D.; Nasirivanaki, M. Universal in vivo textural model for human skin based on optical coherence tomograms. *Sci. Rep.* **2017**, *7*, 17912. [[CrossRef](#)]
40. Adabi, S.; Turani, Z.; Fatemizadeh, E.; Clayton, A.; Nasirivanaki, M. Optical coherence tomography technology and quality improvement methods for optical coherence tomography images of skin: A short review. *Biomed. Eng. Comput. Biol.* **2017**, *8*, 1179597217713475. [[CrossRef](#)]
41. Hariri, A.; Fatima, A.; Mohammadian, N.; Mahmoodkalayeh, S.; Ansari, M.A.; Bely, N.; Avanaki, M.R. Development of low-cost photoacoustic imaging systems using very low-energy pulsed laser diodes. *J. Biomed. Opt.* **2017**, *22*, 075001. [[CrossRef](#)]
42. Turani, Z.; Fatemizadeh, E.; Blumetti, T.; Daveluy, S.; Moraes, A.F.; Chen, W.; Mehregan, D.; Andersen, P.E.; Nasirivanaki, M. Optical Radiomic Signatures Derived from Optical Coherence Tomography Images to Improve Identification of Melanoma. *Cancer Res.* **2019**. [[CrossRef](#)] [[PubMed](#)]
43. Yao, J.; Xia, J.; Maslov, K.I.; Nasirivanaki, M.; Tsytsarev, V.; Demchenko, A.V.; Wang, L.V. Noninvasive photoacoustic computed tomography of mouse brain metabolism in vivo. *Neuroimage* **2013**, *64*, 257–266. [[CrossRef](#)]

