



Kent Academic Repository

Addison, O., Davenport, A.J., Newport, Robert J., Kalra, S., Monir, M., Mosselmans, J.F.W., Proops, D. and Martin, R.A. (2012) *Do 'passive' medical titanium surfaces deteriorate in service in the absence of wear?* *Journal of the Royal Society Interface*, 9 (76). pp. 3161-3164. ISSN 1742-5689.

Downloaded from

<https://kar.kent.ac.uk/46955/> The University of Kent's Academic Repository KAR

The version of record is available from

<https://doi.org/10.1098/rsif.2012.0438>

This document version

Author's Accepted Manuscript

DOI for this version

Licence for this version

UNSPECIFIED

Additional information

Unmapped bibliographic data:LA - English [Field not mapped to EPrints]J2 - J. R. Soc. Interface [Field not mapped to EPrints]C2 - 22832360 [Field not mapped to EPrints]AD - Biomaterials Unit, School of Dentistry, University of Birmingham, Birmingham, United Kingdom [Field not mapped to EPrints]AD - School of Metallurgy and Materials, University of Birmingham, Birmingham, United Kingdom [Field not mapped to EPrints]AD - School of Physical Sciences, University of Kent, Canterbury, United Kingdom [Field not mapped to EPrints]AD - Science Division, Diamond Light Source, Harwell Science and Innovation Campus, Didcot, United Kingdom

Versions of research works

Versions of Record

If this version is the version of record, it is the same as the published version available on the publisher's web site. Cite as the published version.

Author Accepted Manuscripts

If this document is identified as the Author Accepted Manuscript it is the version after peer review but before type setting, copy editing or publisher branding. Cite as Surname, Initial. (Year) 'Title of article'. To be published in *Title of Journal*, Volume and issue numbers [peer-reviewed accepted version]. Available at: DOI or URL (Accessed: date).

Enquiries

If you have questions about this document contact ResearchSupport@kent.ac.uk. Please include the URL of the record in KAR. If you believe that your, or a third party's rights have been compromised through this document please see our [Take Down policy](https://www.kent.ac.uk/guides/kar-the-kent-academic-repository#policies) (available from <https://www.kent.ac.uk/guides/kar-the-kent-academic-repository#policies>).

Do ‘passive’ medical titanium surfaces deteriorate in service in the absence of wear?

O. Addison¹, A.J. Davenport², R.J. Newport³, S. Kalra¹, M. Monir², J.F.W. Mosselmans⁴, D. Proops⁵, R.A. Martin^{3,6}.

¹Biomaterials Unit, School of Dentistry, University of Birmingham, Birmingham, UK.

²School of Metallurgy and Materials, University of Birmingham, Birmingham, UK.

³School of Physical Sciences, University of Kent, Canterbury, UK.

⁴Diamond Light Source, Harwell Campus, Didcot, UK.

⁵University Hospitals Birmingham NHS Foundation Trust, Birmingham, UK.

⁶School of Engineering and Applied Sciences & Aston Research Centre for Healthy Ageing, University of Aston, Birmingham, UK.

Keywords: Titanium, crevice corrosion, microfocus spectroscopy

Corresponding Author: Owen Addison,
Biomaterials Unit,
University of Birmingham School of Dentistry,
St. Chad’s Queensway,
Birmingham,
United Kingdom.

Telephone: 00 44 121 237 2883

Fax: 00 44 121 237 2932

E-Mail: o.addison@bham.ac.uk

Summary

In excess of 1000 tonnes of Titanium (Ti) is implanted into patients in the form of biomedical devices globally on an annual basis. Ti is perceived to be 'biocompatible' due to the presence of a robust passive oxide film (~ 4 nm thick) at the metal surface. However, surface deterioration can lead to the release of Ti-ions and particles can arise as the result of wear and/or corrosion processes. This surface deterioration can result in peri-implant inflammation leading to the premature loss of the implanted device or the requirement for surgical revision. Soft tissues surrounding a commercially pure cranial anchorage device (bone anchored hearing aid) investigated using synchrotron X-ray micro-fluorescence spectroscopy and X-ray absorption near edge structure. Here we present the first experimental evidence that a minimal load bearing Ti implants, which are not subjected to macroscopic wear processes, can release Ti debris into the surrounding soft tissue. As such debris has been shown to be pro-inflammatory we propose that such distributions of Ti are likely to effect to the service life of the device.

Introduction.

Metallic prostheses, fixation and anchorage devices are used extensively for orthopaedic, craniofacial and dental rehabilitation and are generally associated with predictable biological responses following their initial implantation. However, the development of peri-implant inflammation can result in the premature loss of the implanted device or the requirement for revision/rescue surgery [1]. Both scenarios can impact on patient well-being and economically on the health service provider. In the United States it has been reported that the direct cost of such revision surgery now exceeds \$100 million per annum and is increasing due to an ageing population [2]. In the orthopaedic context, failures of replaced articulating joints are frequently aseptic and it has been recognised that a key contributory factor is the degradation of the implant surface(s) which leads to ion leaching and the accumulation of metal debris in the peri-prosthetic *milieu* [3-6]. Despite the concerns being raised regarding the likely biological effects of metal debris and ions generated through wear and/or corrosion processes, the exact mechanisms underpinning their release *in-vivo* and their subsequent involvement in peri-implant inflammation are not fully understood.

In excess of 1000 tonnes of titanium (Ti) is implanted into patients in the form of biomedical devices globally on an annual basis [7]. Cranial anchorage devices and dental implants are manufactured from ‘commercially-pure’ grades (II–IV) of Ti (CPTi), whereas orthopaedic components are most commonly fabricated from the Grade V alloy, Ti 6Al 4V. Ti in these forms is highly reactive and therefore its perceived ‘biocompatibility’ is attributed to the presence of a robust passive oxide film (approximately 4 nm thick) at the metal surface. However, surface deterioration can lead to the release of Ti-ions, and particles can arise as

the result of wear and/or corrosion processes [8]. Whereas wear processes are an inevitable consequence of employing metals to replace load-bearing articulating surfaces as found in artificial joints, the mechanisms underpinning the *in vivo* corrosion of Ti are complex and inadequately characterised [9]. Gross corrosion of the intra-medullary stem of cemented ‘Furlong’ Ti hip replacements has been demonstrated and resulted in cortical hypertrophy, systemic distribution of Ti-ions, pain and aseptic loosening [9]. Metallurgical simulations have demonstrated that in tight crevices, such as between components of modular Ti prosthetic devices, moisture and relative micro-motion of component surfaces can result in the dissolution of Ti ions, local acidification and the degradation of the protective oxide film from the metal, exposing it to the corrosive solution [8]. Intuitively, the process which is understood as crevice corrosion may occur in all Ti devices where peri-implant crevices exist, including dental and cranial anchorage implants. The potential *sequelae* are persistent Ti-ion leaching or Ti particle release into the peri-prosthetic environment irrespective of whether there is significant associated loading or wear.

Investigations at a cellular and molecular level have demonstrated that Ti particles can stimulate the host-inflammatory response contributing to the pathology of peri-prosthetic bone loss [10]. Interactions of Ti particles with macrophages, osteoblasts, bone marrow-derived mesenchymal stem cells, fibroblasts, endothelial cells, and T-cells is believed to contribute to the production of pro-inflammatory and pro-osteoclastogenic cytokines [10-12]. Moreover, Ti particles have been shown to initiate apoptosis, increase production of reactive oxygen species (ROS) and induce oxidative stress-related genes [10]. Notably, data demonstrate that Ti particles can alter cell function and phenotype with differential effects regulated by Ti particle size [13]. Lymphocyte populations including T-cells, respond to Ti particles by activation of the specific CD69⁺ and CCR4⁺ sub-populations and increasing

their secretion of the cytokine RANKL which indirectly locally inhibits osteoblast function as well as promoting bone loss via enhanced osteoclastogenesis [14]. Ti particle exposure of multipotent mesenchymal stem cells (MSCs) results in particulate endocytosis reducing their rate of cell-proliferation and cell-substrate adhesion and increasing the rate of apoptosis which further impairs innate repair mechanisms [15].

The aim of the current investigation is to test the null hypothesis that there is no association between CPTi implants unexposed to significant macroscopic wear and the accumulation of Ti in the peri-implant tissues. Given the evidence to suggest that the accumulation of Ti in peri-implant tissues can significantly modify inflammatory and regenerative processes, the objective is clinically important as frequently such devices fail due to peri-implant inflammatory processes. A cranial anchorage device, the bone anchored hearing aid (BAHA) will be used as an experimental model. BAHAs are a well established treatment for conductive or mixed hearing impairment. A CPTi implant is inserted into the outer table of the post-auricular skull and connected via a modular percutaneous CPTi abutment to a sound processor. Whereas relatively few patients (1-3%) extrude the BAHA device [16-18] up to 33% suffer from peri-implant skin inflammation which becomes hypertrophic and requires revision surgery [17].

Methodology.

Peri-implant inflamed skin tissue was obtained from consented competent adults undergoing scheduled revision surgery associated with a bone anchored hearing aid (BAHA). Ethical approval was obtained through the United Kingdom National Research Ethics Service prior to the commencement of the study (REC 08/H1203/128). The inflamed tissue was surgically retrieved from around the percutaneous Grade IV commercially pure titanium implant (Baha, Cochlear Ltd, Sydney, Australia) using a full thickness circumferential excision (Figure 1). Implants had been inserted into the outer table of the skull, post-auricularly, more than three years previously and were used to anchor an external sound processor as part of the BAHA system to treat unilateral sensorineural hearing loss. Skin was retrieved from around implants which remained firm and well osseointegrated but associated with a hypertrophic reaction surrounding the Ti implant and necessitating skin reduction surgery. Orientated tissue was immediately snap frozen in liquid nitrogen in order to preserve the chemical state and location of any Ti. Frozen tissue sections of 4-6 μm thickness were prepared using metal-free cryotomy and mounted on ultra-pure fused silica microscope slides (<10 ppb Ti) (Spectrosil 2000, Heraeus Quarzglas GmbH & Co., Hanau, Germany). Spurious contamination with Ti during sample preparation was controlled for by processing further tissue with no known exposure or adjacency to Ti, in an identical manner. To comply with experimental facility protocols regarding exposure to unfixed human tissue, the tissue sections were covered in a 25 μm polyimide film (Kapton, Dupont, Wilmington, USA) which was secured at the periphery of the glass slide with epoxy resin.

Synchrotron micro-focus X-ray fluorescence measurements were undertaken using a 4-element Si drifts detector on the I18 Beamline at the Diamond Light Source (Oxfordshire, UK) using an incident energy of 5.7 keV. Tissue sections were initially mapped using a 50 μm resolution to identify areas of interest. Subsequently, the incident beam was focused to give a spot size 5 μm (H) by 3.4 μm (W) and the sample was mounted at a 45° angle to the incident beam, thus resulting in a beam footprint of 5 μm by 5 μm providing a resolution at a length scale similar to that of individual cells. Ti K-edge X-ray absorption near edge structure (XANES) spectra were acquired in fluorescence mode at room temperature from regions where Ti was detected to determine its chemical state. In addition to the explanted human tissue samples, spectra were also collected in transmission mode from Ti standards, including Ti foil (metallic) and several containing Ti^{4+} ions in different coordination environments: cristobalite (fourfold), $\text{Na}_2\text{TiSiO}_5$ (fivefold), and anatase, rutile and CaTiSiO_5 (all sixfold). Reference standards were compared with experimental measurements using Athena software in order to determine speciation [19].

Results.

Synchrotron X-ray fluorescence mapping of thin (4-6 μm) sections of the inflamed skin tissue recovered from adjacent to a percutaneous CPTi implant using a 5 μm X-ray beam demonstrated a wide-spread scattered distribution of Ti (Figure 2). The distribution was heterogeneous in scale with fine fragments varying from 5 μm (highest resolution of detection) to 150 μm . Orientation of the tissue prior to snap freezing allowed location of the distribution relative to the adjacent Ti implant surface and demonstrated the Ti was scattered radially and distant to the tissue-implant interface (>25 μm) and deep to the skin surface (>2000 μm). Preliminary investigation of tissue sections, cut adjacent to the above mapped sections and stained with haematoxylin and eosin, by conventional optical microscopy revealed no discernible relationship between the underlying tissue architecture and Ti distribution. Comparison of the XANES spectra of the Ti standards with spectra taken from areas of high, medium and low relative Ti fluorescence intensity, as identified by X-ray fluorescence mapping, revealed that the Ti was present in a number of forms. Large metallic particles were detected, however there was a considerable distribution of oxide species (Figure 3) with sixfold co-ordination states akin to anatase and rutile being identified.

No Ti was detected by X-ray fluorescence mapping performed on the control tissue which had no known Ti exposure and had been collected, stored and prepared according to an identical experimental protocol.

Conclusions.

Previously, investigators have used microscopy, optical spectroscopy and mass spectrometry techniques to confirm the existence of Ti in peri-prosthetic orthopaedic soft tissues [20, 21]. The techniques have limited resolution or an inability to relate the quantity, size and chemical speciation of Ti to cellular and sub-cellular structures that would be required to inform biological investigations. Accordingly, synchrotron X-ray micro-focus spectroscopy was used in the current investigation and conferred the ability to detect trace distributions of Ti in thin tissue sections at a high resolution [22]. The current investigation has demonstrated for the first time a scattered and heterogeneous distribution of Ti in inflamed tissues taken from around failing skin-penetrating Ti implants. The tissue was taken from adjacent to a CPTi device which is not exposed to obvious macroscopic wear or loading in service. Furthermore, the location of the distributed Ti which was deep with respect to the skin surface, which suggests that wear processes are unlikely to be a major contributor. Debris from implant insertion is highly unlikely to lead to the observed widespread distribution of fine fragments of both oxide and metal. In the absence of obvious macroscopic wear or loading processes, we propose that the Ti in the tissue results from micro-motion and localised corrosion in surface crevices [23, 24]. Our results provide primary evidence that the expected passive surface of skin-penetrating Ti implants can deteriorate in clinical service, leading to the accumulation of Ti debris in the surrounding tissue. The quantities, size and speciation of Ti debris reflect stimuli previously demonstrated to be pro-inflammatory in nature. Our results emphasise the need to understand further both the physical and chemical mechanisms leading to the dispersal of Ti species in tissue around implants and their potential to exacerbate inflammation. Similar processes are likely to contribute to the failure of other metal implants

in soft tissues where macroscopic wear is not considered to be a risk.

References.

- [1] Cadosch, D., Chan, E., Gautschi, O.P., Filqueira, L. 2009. Metal is not inert: role of metal ions released by biocorrosion in aseptic loosening -current concepts. *J Biomed Mater Res A*, **15**, 1252-62.
- [2] Bozic, K.J., Kurtz, S.M., Lau, E., Ong, K., Vail, T.P., Berry, D.G. 2009. The epidemiology of revision total hip arthroplasty in the USA. *J Bone Joint Surg Am*, **91**, 128-133.
- [3] Revell, J.R. 2008, The combined role of wear particles, macrophages and lymphocytes in the loosening of total joint prostheses. *J R Soc Interface*, **6**, 1263-78.
- [4] Korovessis, P., Petsinis, G., Repanti, M., Repantis, T. 2006. Metallosis after contemporary metal on metal total hip arthroplasty. Five to nine year follow up. *J Bone Joint Surg Am*, **88**, 1183-91.
- [5] Ingham, E., Fisher, J. 2000. Biological reactions to wear debris in total joint replacement. *Proc Inst Mech Eng H*, **214**, 21-37.
- [6] COM/06/S1. 2006. Medicines and Healthcare products Regulatory Agency, UK.
- [7] Implant-Based Dental Reconstruction. 2007. Kalorama Information, Rockville, MD, USA
- [8] Baldwin, L., Hunt, J. 2006. Host inflammatory response to NiCr, CoCr, and Ti in a soft tissue implantation model. *J Biomed Mater Res A*, **79**, 574-581.
- [9] Hallam, P., Haddad, F., Cobb, J. 2004. Pain in a well-fixed titanium hip implant. *J Bone Joint Surg Br*, **86**, 27-30.
- [10] Møller, P., Jacobsen, N.R., Folkmann, J.K., Danielsen, P.H., Mikkelsen, L., Hemmingsen, J.G., Vesterdal, L.K., Forchhammer, L., Wallin, H., Loft, S. 2010. Role of oxidative damage in toxicity of particulates. *Free Radic Res*, **44**, 1-46.
- [11] Hallab, N.J., Anderson, S., Caicedo, M., Brasher, A., Mikecz, K., Jacobs, J.J. 2005. Effects of soluble metals on human peri-implant cells. *J Biomed Mater Res A*, **74**, 124-40.
- [12] Cadosch, D., <eagher, J., Gautschi, O.P., Filqueira, L. 2009. Uptake and intracellular distribution of various metal ions in human monocyte-derived dendritic cells detected by Newport Green DCF diacetate ester. *J Neurosci Methods*, **30**, 182-187.
- [13] Choi, M.G., Koh, H.S., Klues, D., O'Connor, D., Mathur, A., Truskey, G.A., Rubin, J., Zhou, D.X., Sung, K.L. 2005. Effects of titanium particle size on osteoblast function in vitro and in vivo. *Proc Natl Acad Sci USA*, **102**, 4578-4583.
- [14] Cadosch, D., Sutanto, M., Chan, E., Mhawi, A., Gautschi, O.P., von Katterfeld, B., Simmen, H.P., Filgueira, L. 2010. Titanium uptake, induction of RANK-L expression, and enhanced proliferation of human T-lymphocytes. *J Orthop Res*, **28**, 341-347
- [15] Okafor, C.C., Haleem-Smith, H., Laqueriere, P., Manner, P.A., Tuan, R.S. 2006. Particulate endocytosis mediates biological responses of human mesenchymal stem cells to titanium wear debris. *J Orthop Res*, **24**, 461-473.
- [16] House, J.W., Kutz, J.W. 2007. Bone anchored hearing aids: incidence and management of post-operative complications. *Otol Neurotol*, 2007, **28**, 213-217.

- [17] Gillett, D., Fairley, J.W., Chandrashaker, T.S., Bean, A., Gonzalez, J. 2006 Bone-anchored hearing aids: results of the first eight years of a programme in a district general hospital, assessed by the Glasgow benefit inventory. *J Laryngol Otol*, **120**, 537-542.
- [18] Grant, M.M., Monksfield, P., Proops, D., Brine, M., Addison, O., Sammons, R.L., Matthews, J.B., Reid, A., Chapple, I.L.C. 2010. Fluid exudates from inflamed bone anchored hearing aids demonstrate elevated levels of cytokines and biomarkers of tissue and bone metabolism. *Otology and Neurotology*, **31**, 433-439.
- [19] Ravel, B. Newville, M. 2005, ATHENA, ARTEMIS, HEPHAESTUS: data analysis for X-ray absorption spectroscopy using IFEFFIT" *J. Synchrotron Rad.* **12**, 537--541.
- [20] Ichinose, S., Muneta, T., Sekiya, I., Itoh, S., Aoki, H., Tagami, M. 2003. The study of metal ion release and cytotoxicity in Co-Cr-Mo and Ti-Al-V alloy in total knee prosthesis. *J Mat Sci*, **14**, 79-86.
- [21] Sarmiento-González, A., Marchante-Gayón, J.M., Tejerina-Lobo, J.M., Paz-Jiménez, J., Sanz-Medel, A. 2008. High-resolution ICP-MS determination of Ti, V, Cr, Co, Ni, and Mo in human blood and urine of patients implanted with a hip or knee prosthesis. *Anal Bioanal Chem*, **391**, 2583-2589.
- [22] Mosselmans, J.F.W, Quinn, P.D, Dent, A.J., Cavill, S.A., Moreno, S.D., Peach, A., Leicester, P.J., Keylock, S.J., Gregory, S.R., Atkinson, K.D., Rosella, J.R. 2009. I18– the microfocus spectroscopy beamline at the Diamond Light Source. *J. Synchrotron Rad*, **16**, 1-7.
- [23] Burstein, G.T., Liu, C., Souto, R.M. 2005. The effect of temperature on the nucleation of corrosion pits on titanium in Ringer's physiological solution. *Biomaterials*, **26**, 245–256.
- [24] Griess, J.C. 1968. Crevice corrosion of titanium in aqueous salt solutions. *Corrosion*, **24**, 96-109.

Figures

Figure 1. Clinical photograph of peri-implant soft tissue overgrowth associated with a CPTi BAHA fixture. Up to 33% of patients suffer from peri-implant skin inflammation which can necessitate implant removal. Interrupted line indicates circumferential incision line for tissue explanation.

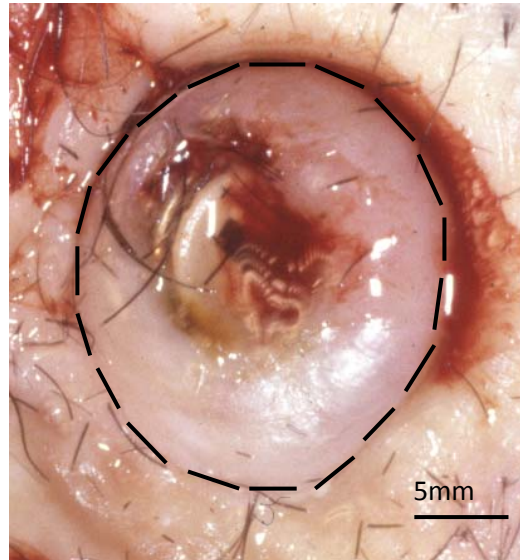


Figure 2. X-ray fluorescence map (5300 x 2000 μm) of the associated distribution of Ti in peri-implant soft tissue (6 μm thickness) taken $>25 \mu\text{m}$ from a CPTi BAHA. Legend refers to increasing fluorescence values at higher values specifically for Ti.

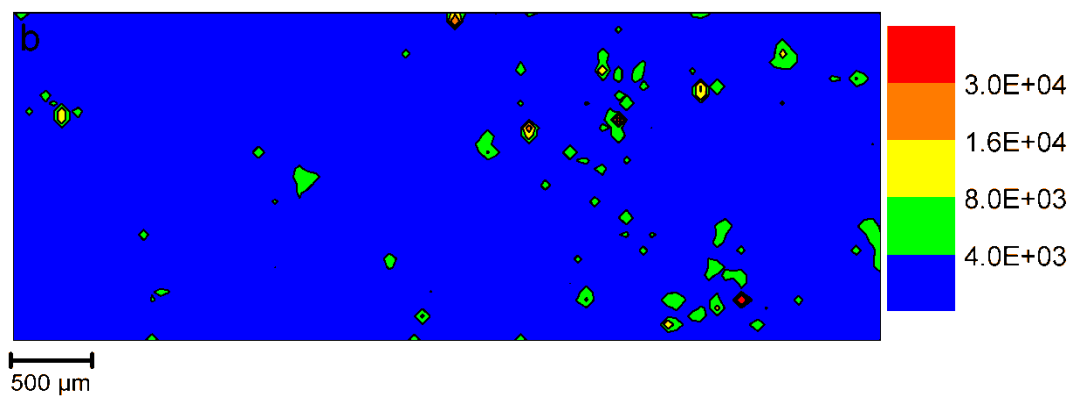


Figure 3. XANES spectra for Ti controls and experimental traces demonstrating both metallic and oxide species.

