



Kent Academic Repository

Schoenefeldt, Henrik (2018) *The Historic Ventilation System of the House of Commons, 1840-52: revisiting David Boswell Reid's environmental legacy*. *Antiquaries Journal*, 98 (2018). pp. 245-295. ISSN 0003-5815.

Downloaded from

<https://kar.kent.ac.uk/65558/> The University of Kent's Academic Repository KAR

The version of record is available from

<https://doi.org/10.1017/S0003581518000549>

This document version

Publisher pdf

DOI for this version

Licence for this version

CC BY (Attribution)

Additional information

Versions of research works

Versions of Record

If this version is the version of record, it is the same as the published version available on the publisher's web site. Cite as the published version.

Author Accepted Manuscripts

If this document is identified as the Author Accepted Manuscript it is the version after peer review but before type setting, copy editing or publisher branding. Cite as Surname, Initial. (Year) 'Title of article'. To be published in **Title of Journal**, Volume and issue numbers [peer-reviewed accepted version]. Available at: DOI or URL (Accessed: date).

Enquiries

If you have questions about this document contact ResearchSupport@kent.ac.uk. Please include the URL of the record in KAR. If you believe that your, or a third party's rights have been compromised through this document please see our [Take Down policy](https://www.kent.ac.uk/guides/kar-the-kent-academic-repository#policies) (available from <https://www.kent.ac.uk/guides/kar-the-kent-academic-repository#policies>).

THE HISTORIC VENTILATION SYSTEM OF THE HOUSE OF COMMONS, 1840–52: RE-VISITING DAVID BOSWELL REID'S ENVIRONMENTAL LEGACY

Henrik Schoenefeldt

Dr Henrik Schoenefeldt, Senior Lecturer in Sustainable Architecture, School of Architecture, University of Kent, Canterbury, Kent CT2 7NS, UK. Email: H.Schoenefeldt@kent.ac.uk

Between 1840 and 1846 the Scottish physician David Boswell Reid produced a scheme for a central ventilation system serving the Palace of Westminster. This scheme included a proposal for a sophisticated ventilation and climatic control system in the House of Commons. Although the plans for a central system were abandoned after six years, Reid was able to implement his idea within the confines of the House of Commons. Existing literature on Reid's involvement in the design of the Palace of Westminster has focused largely on his difficult relationship with the architect Charles Barry, but his actual contribution to the design of the ventilation system has remained largely unexplored. Neither his unfinished early proposal nor his final design for the House of Commons has been studied in any depth before. This paper retraces the evolution of Reid's original plans, and provides a systematic reconstruction of the ventilation system implemented inside the House of Commons between 1847 and 1854. The historic system is now completely lost, but new archival research, involving the study of several hundred letters, sketches and plans, has yielded detailed insights into its design and how it performed historically. In addition to revealing the ventilation system's physical arrangements, research has uncovered how scientists and engineers had evaluated its design empirically from a human and technological perspective. As such, this paper provides a new perspective on antiquarian studies and illuminates how architectural technology in the mid-nineteenth century was shaped, evaluated and refined based on environmental performance. Although environmental factors, such as climate or air purity, were more transient dimensions of architecture, in the case of the House of Commons this paper shows that they were key drivers of architectural form.

INTRODUCTION

The first ventilation system in the House of Commons, completed as part of Charles Barry's architectural scheme for the new Palace of Westminster in 1852, was developed by the Scottish physician David Boswell Reid (1805–63). Reid, referred to as the 'ventilator', was originally employed by the Department of Woods and Forests to develop a ventilation scheme for the entire palace; however, his early scheme was discarded after six years. In 1846, responsibility for ventilation of the building (though not the House of Commons) was transferred to Barry. Ventilation in the House of Commons was the only part of Reid's original scheme that was realised, and was operational for only two years until it was

decommissioned and replaced with a new system. The last remaining physical remnants of Reid's original system were ultimately destroyed by the Luftwaffe in 1941. The current debating chamber, designed by the architect Giles Gilbert Scott at the end of World War II, is equipped with a modern air-conditioning and ventilation system by the mechanical engineer Oscar Faber.¹ Except for fragments of the original air supply channels inside the roof and basement, none of the original physical features has survived.²

While it could be argued that Reid's original system was an unsuccessful and short-lived experiment, this paper intends to show that he accomplished a highly complex and sophisticated system that was the outcome of extensive enquiries into technical, environmental and human aspects of ventilation and climate control. These included experiments with full-scale temporary structures, which began in the spring of 1836 with the construction of a physical model of the debating chamber in Edinburgh and were continued in Westminster, this time under real-life conditions, inside the temporary House of Commons and the temporary House of Lords. These Houses had been erected by the architect Robert Smirke in 1834, a few months after a fire had destroyed the original medieval palace, to provide parliament with provisional accommodation. Reid's experimental enquiries were followed by the development of his first, but unrealised, scheme, in which the House of Commons formed an integral part of a central ventilation system servicing the entire Palace of Westminster. This earlier scheme represents an important link between his experimental enquiries and his final scheme for the permanent House of Commons. This link has received little recognition in the existing literature.³ Although the palace is widely recognised as being an important building within the history of environmental technology,⁴ neither Reid's early proposal nor the final design for the permanent Houses of Commons has been studied in any depth before.⁵ The work of architectural historians⁶ and historians of environmental design⁷ has focused primarily on the overarching concept behind Reid's early masterplan, while the sophisticated arrangements inside the House of Commons has remained largely uninvestigated.

This paper provides a detailed reconstruction of the lost system inside the House of Commons, and retraces its evolution using original archival material, such as letters, sketches, architectural plans, technical reports and parliamentary papers.⁸ In addition, historical measurements, eyewitness accounts and reports of scientific experiments are used to reconstruct the climatic and atmospheric conditions within the debating chamber and how scientists, engineers and MPs were involved in the empirical evaluation of the system. A new perspective is offered on the study of historic buildings by illuminating how architectural technology in the mid-nineteenth century was evaluated based on environmental

1. GB Parliament, 1943–4, 6. Faber's scheme is shown in early drawings from July 1944 (Faber and Scott 1944) and in the working drawings for his final scheme of 1951 (PED).
2. The author has undertaken surveys of the remaining physical features in the House of Commons as part of his involvement in the Palace of Westminster Restoration and Renewal Programme.
3. A paper on Reid's system inside the permanent House of Commons was presented by the author at the Construction History conference: Schoenefeldt 2015, 167–82.
4. Brucemann and Prowler 1977; Bruegmann 1978; Sturrock and Lawson-Smith 2006; Hawkes 2012, 133–36.
5. Hitchcock 1954; Cocks 1977; Cannadine 2000; Collins 1998; Gleich 2012.
6. Port 1976, 218–31.
7. Lerum 2016, 54–62.
8. This paper is based on archival material held by Cambridge University Library, University College London (UCL), Royal Institute of British Architects (RIBA), the National Art Library, the British Library, The National Archives, the Parliamentary Archives and the Parliamentary Estates Directorate.

criteria. Although environmental factors, such as climate or air purity, are more transient dimensions of architecture, they were part of the physical reality that affected the MPs' experience of the chamber from the perspective of thermal comfort and air quality. As the objective behind the development of the sophisticated system was to enhance the MPs' personal experience, the state of the internal environment became the primary criteria in the evaluation of its performance, and a deciding factor in the decision to decommission Reid's system after two years.

REID'S BACKGROUND

Reid was thirty years old when he was approached to give technical advice on the ventilation of the Houses of Parliament. This was the first time that he had been involved in a large architectural project. Reid was a teacher and scientist with no background in engineering or architecture. In fact, he had trained as a medical doctor at the University of Edinburgh, and for fifteen years had pursued a career as a lecturer and researcher within the field of chemistry.

While working as a university lecturer under Thomas Charles Hope, professor of chemistry at the College of Surgeons, Reid began to develop new approaches to the teaching of chemistry, focusing on experimental research as a practical skill, its application within industry and its use as a design tool, including the use of scientific methods to address fundamental problems of ventilation. In several textbooks, which Reid had written for chemistry students, he not only illustrated how to conduct certain experiments, but also illustrated how these could be used to examine different aspects of ventilation, such as the chemical assessment of indoor air quality.⁹ Unsuccessful in establishing a separate chair for 'practical chemistry' at the College of Surgeons, Reid left and, in 1833, established a private chemistry laboratory in Edinburgh with new purpose-built facilities for teaching and experimental research.

The laboratory facilities were based on Reid's own plans and incorporated a ventilation system designed to address the challenge of adequately ventilating an enclosed space that could not only get crowded with students, but was also exposed to large quantities of chemical fumes released during classes. Reid conducted extensive experimental research into ventilation, which included the testing of different ventilation arrangements within experimental rooms and studies looking at air quality and climates from a physiological perspective. These early experimental studies, which will be explored in more detail in this paper, followed methodologies that would become fundamental in the design of the ventilation for the House of Commons. When parliament approached Reid in 1835, his reputation as an authority in the field of ventilation was based entirely on his experimental research and the success of the ventilation system inside his laboratory.

Various parliamentarians, including Lord Brougham and Earl Grey, had met Reid and witnessed a demonstration of his system during a visit organised by the British Association for the Advancement of Science (BAAS) in 1834.¹⁰ In 1835, Lord Sudeley, who also knew of the system, invited Reid to advise a parliamentary committee on possible solutions for ventilating debating chambers, but Reid was not formally employed to work on the design of the actual Palace of Westminster until four years later, when he had provided empirical

9. Reid 1863, 5–16.

10. Reid 1837a, 1844, xvi; Reid and Harris 1858, xxv.

evidence of his competencies through successful demonstrations within the debating chamber of the temporary House of Commons. The final decision to appoint Reid was made by Lord Duncannon, First Commissioner of Woods and Forests, without Barry's approval. Duncannon argued that the success of the system tested inside the temporary House of Commons was sufficient evidence of his competence.¹¹ Barry, however, had objected to the employment of a medical doctor. In October 1839, when the appointment of a ventilator was first discussed, Barry wrote to Duncannon that Reid did not have the required skills as he was not an engineer. While acknowledging the success of his system inside the temporary House of Commons, Barry felt that Reid was not sufficiently 'acquainted with the practical details of the building and machinery'.¹² Instead, Barry recommended Charles Manby, a member of the Institution of Civil Engineers, who had worked on the hot-water system in the British Museum.

PRELIMINARY INVESTIGATIONS

The original architectural designs for the palace, produced by the architects Charles Barry and Augustus Welby Northmore Pugin in 1835, were developed without Reid's involvement. Reid was not formally employed to work on the palace until April 1840.¹³ The architectural scheme had been procured through an architectural competition in which questions of ventilation were more marginal concerns.¹⁴ The competition was publicly announced in June 1835,¹⁵ but the following month saw the House of Commons appoint a Select Committee to undertake a separate enquiry into possible ventilation solutions without reference to any specific architectural design.¹⁶ The high level of concern about the issue of ventilation among MPs was a response to a discontent with the poor air quality and uncomfortable climate conditions within the old debating chamber destroyed in the great fire of 1834.

Reid, who was one of several experts consulted throughout August 1835, proposed a scheme modelled on a stack-driven system he had designed for the Roxburgh Laboratory, his private teaching laboratory in Edinburgh.¹⁷ In a series of sketches, he outlined the proposal for a debating chamber that was completely sealed and in which the air was supplied through a tall inlet shaft and exhausted by means of a second tower, referred to as an 'up-cast shaft'. The pull produced by warm air ascending the up-cast shaft was intended to sustain the air circulation without fans. A furnace was proposed at the base of the shaft to enhance the convection. In its final report, published in September 1835, the Select Committee was reluctant to recommend any specific ventilation scheme for the new Palace of Westminster. Nonetheless, it advised that tests be undertaken of Reid's proposal, providing empirical evidence of its viability. These began in spring 1836 with the erection of a model of the debating chamber in the laboratory in Edinburgh. Inside the model, Reid demonstrated how the fundamental challenge of adequately ventilating, warming and lighting a debating

11. Ventilation of the House – Dr Reid: *Hansard* HC Deb. vol 135, cols 381–5, 18 Jul 1854.

12. Letter from Barry to Lord Duncannon, 3 October 1839, in GB Parliament 1846f, 21–2.

13. Milne 1840 [letters]; GB Parliament 1846c.

14. GB Parliament. 1836a; oral report by Tracey, 10 Mar 1836 (Ev 6 Q59–60), in GB Parliament 1836b.

15. *Yorkshire Gaz* 1835.

16. GB Parliament 1835.

17. Schoenefeldt 2014, 178–9.

chamber could be addressed through an integrated system, incorporating not only ventilation and climate control, but also artificial lighting. One of the main challenges associated with the ventilation of a debating chamber was the large, often sudden, fluctuations in the number of MPs present, which made it difficult to maintain stable temperatures or guarantee an adequate supply of fresh air. Another issue was protecting the interior atmospherics from the heat-load and fumes generated by nineteenth-century gas lighting. In Reid's model, the issue was addressed by concealing the gas burners behind a glass ceiling.

Tests continued within the temporary Houses of Commons (1836–51) and Lords (1838–47),¹⁸ enabling Reid to refine his concept under real-life conditions over several years.¹⁹ The possibility of applying the stack system to the actual Palace of Westminster, however, was not seriously considered until October 1839, when Barry engaged Reid in a first feasibility study.²⁰ For a period of four years, Barry had continued to develop his plans without reference to the principles that Reid was testing.²¹ Until now, the plans had adhered to a simpler, less technical approach using openable windows for cross-ventilation and fireplaces for heating. Reid's scheme, developed between 1840 and 1846, followed a fundamentally different approach that could only be implemented through significant revision to the original architectural plans, requiring Reid to collaborate closely with Barry's team. The original drawings and sketches show that the plans underwent changes in cross-section and planned to accommodate a large network of air chambers and passages for the movement and treatment of air. This process involved extensive, at times difficult, negotiations between Barry and Reid over access to space for ventilation. These tensions culminated in several disputes in 1844 and 1845 that ultimately led to Reid's plan being abandoned after six years of development. The quarrels between Reid and Barry have been extensively discussed by architectural historians.²² Various scholars have highlighted that Reid's ability to successfully collaborate with architects and engineers was compromised by his inexperience with architectural projects and his limited technical knowledge and skills.

However, the emphasis on the shortcoming of Reid's involvement has detracted attention from the significant influence that his scientific and medical background had on the design of the ventilation system or the empirical working methods that were used in its development.²³ He provided skills and perspectives that were distinct from those of civil engineers and architects. His perspective on architecture was characterised through a focus on environmental issues, human physiology and a scientific approach to ventilation exploiting the natural movement of air. In *The Architecture of the Well-Tempered Environment*, Reyner Banham wrote that medical doctors were instrumental in establishing early practices of building science,²⁴ and the Palace of Westminster could be interpreted as an attempt to integrate doctors into a larger cross-disciplinary design team. The letters and drawings used in the communication between Reid and Barry show that Reid's main contribution was through the development of design concepts, underpinned by experimental enquiries inside the temporary Houses of Parliament. These enabled Reid to evaluate and refine ideas, utilising research methods he had deployed in early laboratory

18. GB Parliament 1835; Reid 1837a.

19. Reid 1844, 270–310.

20. Barry 1839 [letters]; Reid undated, 1839a, 1839b [letters].

21. Oral report by Vivian on 10 Mar 1836 (Ev 10 Q 84–98) in GB Parliament 1836b.

22. Hitchcock 1954; Cocks 1977, Collins 1998; Hill 2007; Gleich 2012; Shenton 2016.

23. Reid 1863.

24. Banham 1984, 29–43.

Temporary Houses of Parliament

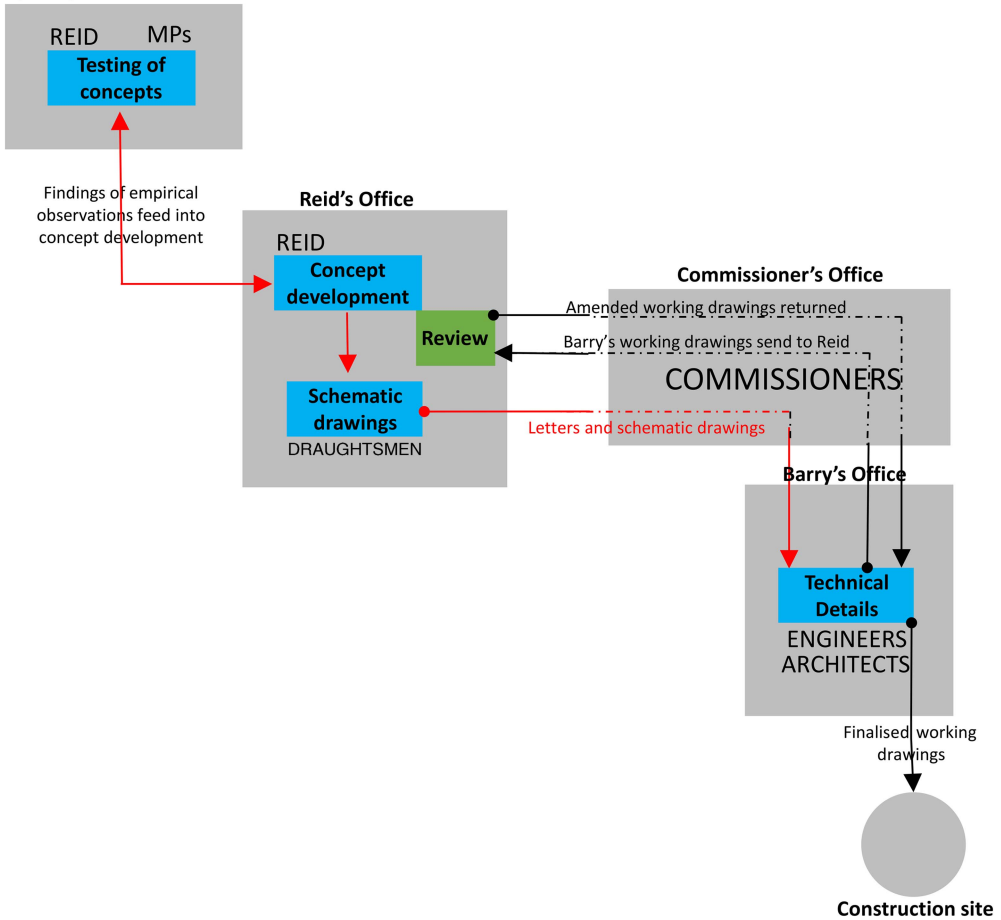


Fig 1. Diagram illustrating how experiments with temporary structures have fed into the collaborative design process. *Drawing:* author.

experiments in Edinburgh. Reid provided written specifications, sketches and schematic drawings to outline his concepts, but relied on the technical skills of staff in Barry's office to develop his ideas on a technical level. This included the drafting of detailed construction drawings. In terms of his skills and knowledge, Reid therefore has a closer resemblance to a modern building scientist than a services engineer with a mechanical engineering background (fig 1).²⁵

REID'S FIRST SCHEME (1840–6)

Although Reid's early scheme was not realised, archival records provide significant insights into his original intentions. These records comprise original drawings and sketches as well as an extensive body of written evidence, including letters, reports and transcripts of

25. Schoenefeldt 2016c.

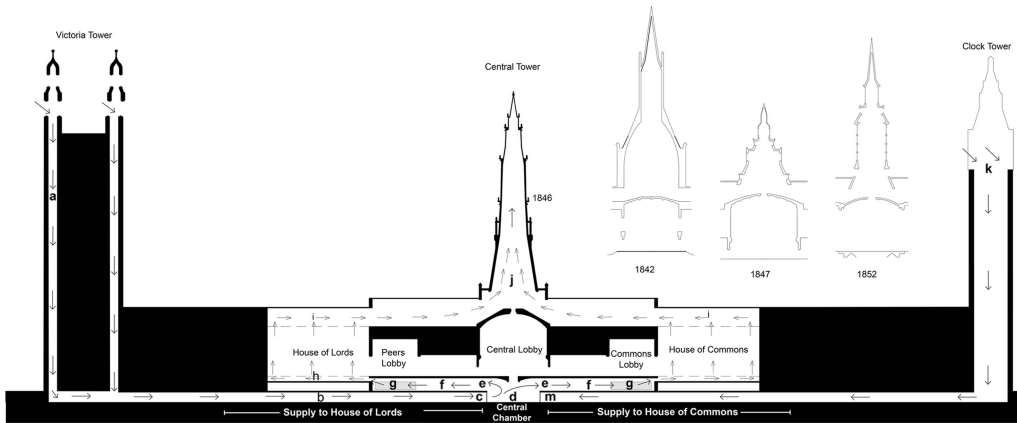


Fig 2. Diagrammatic cross-section outlining the principle behind Reid's proposed centralised ventilation system for the palace, 1840-46. *Drawing*: author.

Key: a. inlet shafts inside Victoria Tower; b. fresh air passage linking inlets shaft of Victoria Tower to central air chamber; c. valve for fresh air supply from Victoria Tower; d. 'central air chamber'; e. fans for supply to debating chambers; f. 'directing flue' to debating chambers; g. 'heating chamber'; h. equalising chamber below main floor of debating chambers; i. 'vitiating air chamber' above ceiling; j. central up-cast shaft (smoke and air); k. inlet shaft inside Clock Tower; l. fresh air passage linking inlets shafts to central air chamber; m. valve for fresh supply from Clock Tower.

interviews with several Select Committees between 1841 and 1846. The written communication between Reid, Barry and the Department of Woods and Forests shows that the ventilation scheme was conceived as a means of protecting parliament from the hazards of smoke pollution, which, alongside sanitation, was a major environmental health issue in nineteenth-century London.²⁶ Referring to observational studies on air pollution conducted in Westminster over the previous five years,²⁷ Reid argued that natural ventilation through openable windows was not feasible due to the severity of atmospheric pollution.²⁸ Instead, he proposed a hermetically sealed debating chamber that was integrated into a central ventilation system servicing the entire palace (fig 2).

The air would be supplied centrally through a network of fresh air mains inside the basement and extracted through channels at roof level. These terminated inside a large shaft added above the vaulted ceiling of the Central Lobby. Fresh air for the central supply was introduced through three corner turrets in the Victoria Tower and one large shaft in the Clock Tower (fig 3a).²⁹ The purpose of the tall inlet shafts was to gain access to the atmosphere at a higher altitude, which Reid claimed to be less polluted than at ground level.³⁰ During an interview given to the Select Committee on Smoke Prevention (19 July 1843), Reid reported that the use of ground-level inlets in the temporary Houses of Parliament had caused difficulties with protecting the internal atmosphere from smoke pollution. On several occasions, he reported, MPs got sick when the atmosphere around the

26. Mumfort 1938.

27. Reid 1840, 1841 [letters].

28. Oral report by Reid on 15 Aug 1843 (Ev 188-96 Q2098-2340) in GB Parliament 1843.

29. GB Parliament 1852a; oral report by Reid on 26 Jul 1842 (Ev 9 Q29-30) in GB Parliament 1842.

30. Reid 1844, 199.

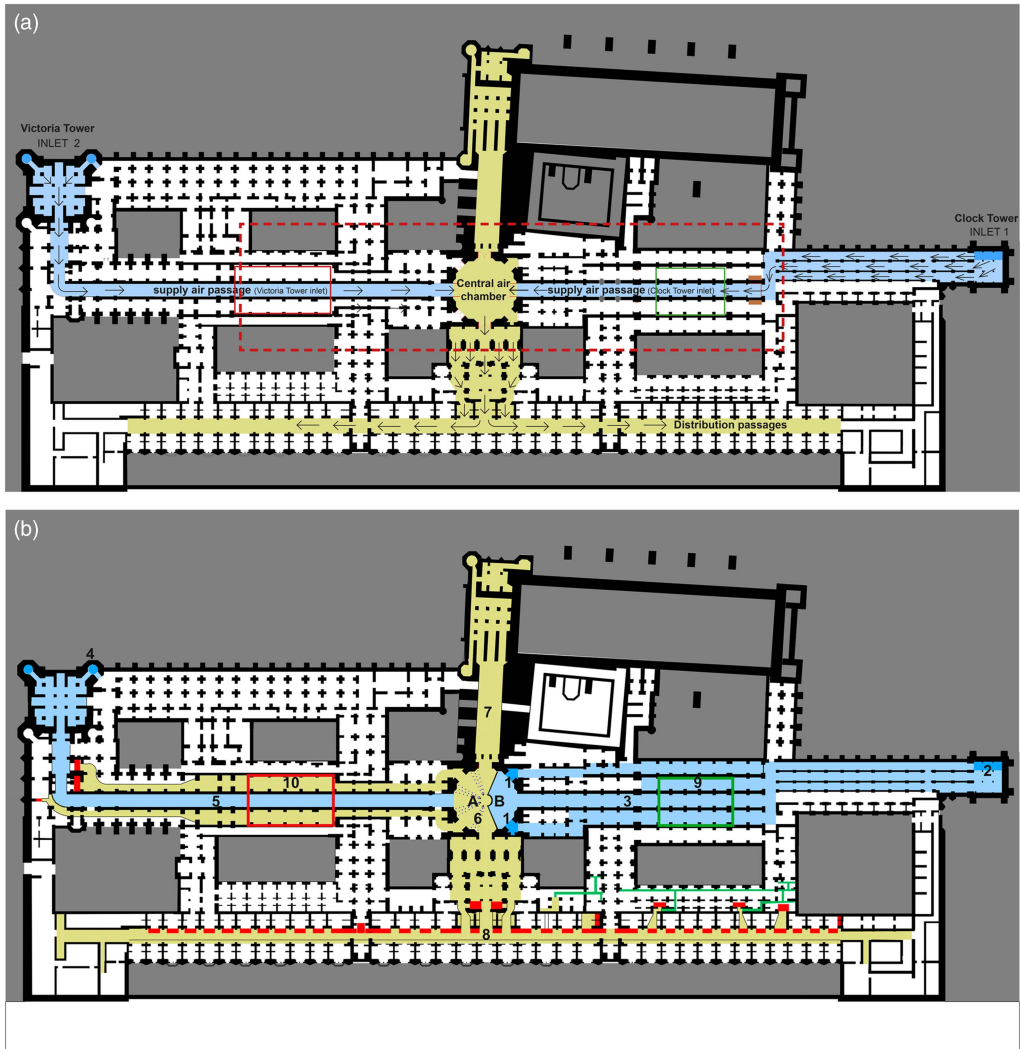


Fig 3. a) Plan of basement as proposed in Reid's original scheme (1840–6), showing supply air passages (blue) by which the Clock Tower and Victoria Tower were to be linked to the central air chamber, and the main fresh passages (yellow) for distributing the air throughout the palace; b) plan of basement showing divided air supply adopted after 1846. *Drawings*: author.

Key: A. Barry's side of the central air chamber; B. Reid's side of the central air chamber; 1. back-up inlets for House of Commons floor system, inside the central air chamber; 2. main inlets for House of Commons floor system, inside Clock Tower; 3. air passage connecting two inlets with House of Commons; 4. main inlet for House of Lords, inside Victoria Tower; 5. air supply passage to the central air chamber; 6. heating and humidification system inside the central air chamber; 7. distribution channel to St Stephen's Porch; 8. distribution channel to river front; 9. House of Commons debating chamber (above); 10. House of Lords debating chamber (above).

inlets was overly exposed.³¹ The supply air had to be thoroughly filtered using canvas filters and water sprinklers.³² As pollution levels varied locally depending on the wind direction, the Houses were also equipped with two separate inlets – one facing Cotton Garden, another facing Westminster Abbey – which could be swapped whenever the pollution around one inlet became too severe.³³ As pollution levels at the top of each tower also varied depending on the wind direction, Reid intended to adopt a similar system for the palace's fresh air supply. This was intended to rely on only one tower at time. For this purpose, the Clock and Victoria Towers were linked at basement level through a 'central air chamber', which was equipped with valves to switch inlets depending on the state of the atmosphere at opposite ends of the site (fig 3b).³⁴

This level of attention to issues of air pollution was the reflection of Reid's wider engagement in issues of public health. While working in Westminster, he also contributed to studies of air pollution in major industrial cities and its health implications.³⁵ Between 1844 and 1845 he was a member of the commissioners for inquiring into the state of large towns and populous districts, undertaking large surveys of industrial towns,³⁶ and in 1843 he advised the Select Committee on Smoke Prevention on strategies for reducing atmospheric pollution.³⁷ His suggestions included measures addressing the root causes of pollution, such as the use of fuel efficient technologies and cleaner fuels, and solutions addressing the symptoms, for example, air filtration and the displacement of pollution through large chimneys.

The fresh air entering the central chamber would be distributed internally via a network of 'air mains' with the assistance of steam-powered fans (fig 4).³⁸ The chamber was linked to four principal mains: two at basement level leading towards St Stephen's in the west and the river front in the east, and another two on the ground floor serving the debating chambers (fig 5). The fresh air for the House of Commons left the central chamber through a large circular valve on the north side, which measured 12ft in diameter. Behind this valve was a large horizontal flue taking the air into the 'heating chamber' below the Commons Lobby (fig 6).³⁹ Passing through another set of circular valves at the north side of the heating chamber, the conditioned air entered the 'equalizing chamber' below the floor of the debating chamber.⁴⁰ The equalising chamber was provided to adjust temperature and humidity before the air was admitted into the debating chamber through openings in the floor, gallery and ceiling.⁴¹

This arrangement followed the principle of a warm-air central heating system, which was already a well-established technology by the 1830s,⁴² but Reid's objective was to implement a form of air-conditioning that had been tested at a smaller scale inside the

31. Oral report by Reid on 23 Feb 1846 (Ev 14 Q74–5) in GB Parliament 1846a.

32. Oral report by Reid on 19 Jul 1843 (Ev 28 Q321) in GB Parliament 1843.

33. Oral report by Reid on 1 Oct 1841 (Ev 33 Q315–16) in GB Parliament 1841; Reid 1844, 274–6; oral report by Reid on 23 Feb 1846 (Ev 14 Q74–5) in GB Parliament 1846a.

34. Oral report by Reid on 30 Sep 1841 (Ev 22 Q157) in GB Parliament 1841.

35. Reid 1844, 204.

36. GB Parliament 1844a; Reid 1845.

37. Oral report by Reid on 15 Aug 1843 (Ev 188–96 Q2098–2340) in GB Parliament 1843.

38. Reid 1846 [letters]; plans of 'Ground floor of Central Chamber' in Anon 1843a.

39. 'Plans and sections of south-west corner of House, showing provision for ventilation' in Anon 1843b; 'Ground floor of Central Chamber' in Anon 1843a.

40. Reid 1844a [plans].

41. Oral report by Reid on 26 Jul 1842 (Ev 10 Q44–5) in GB Parliament 1842; Reid 1845a [plans].

42. Bruegmann 1978.

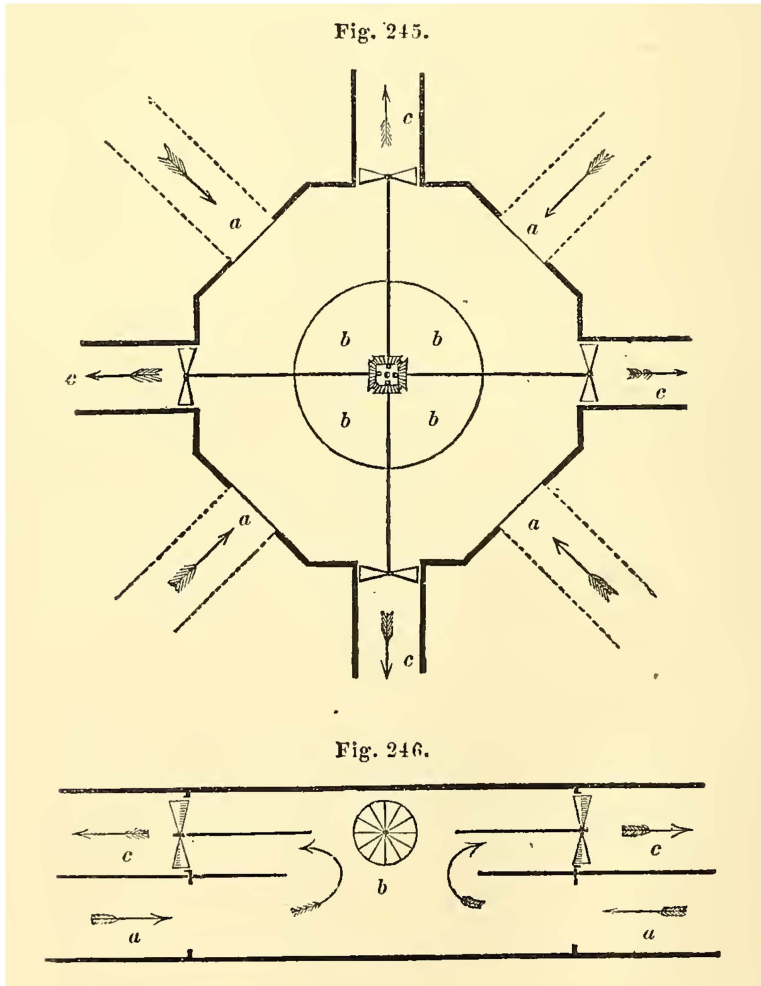


Fig 4. Diagrammatic plan and cross-section outlining the concept behind the central air chamber that Reid had proposed to distribute air throughout the Palace of Westminster, by Reid (1844, 332). *Photograph:* © Cambridge University Library.

temporary House of Commons. This system combined warm-air central heating with facilities for cooling and humidity control.⁴³ Neil Sturrock and Peter Lawson-Smith (2006) argue that this was one of earliest demonstrations of the principle of air-conditioning.⁴⁴ In contrast to modern air-conditioning, invented by Willis Carrier in the early 1900s,⁴⁵ it relied on the use of passive, non-mechanical methods of cooling. According to an interview with the Select Committee on Ventilation of the New Houses of Parliament, the plan was to exploit the natural capacity of stone to absorb heat by exposing the supply air to the masonry of the vaults

43. For detailed study of the earlier air-conditioning methods used in the temporary Houses of Parliament, see Schoenefeldt 2014.

44. Sturrock and Lawson-Smith 2006.

45. Ackerman 2010.

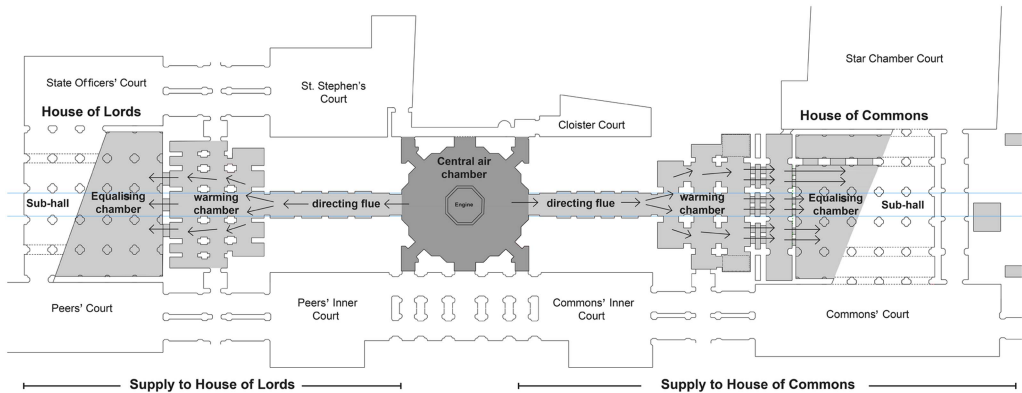


Fig 5. Plan of ground floor showing fresh air supply from the central chamber to the Houses of Lords and Commons according to Reid's original scheme, 1840–6.

Drawing: author.

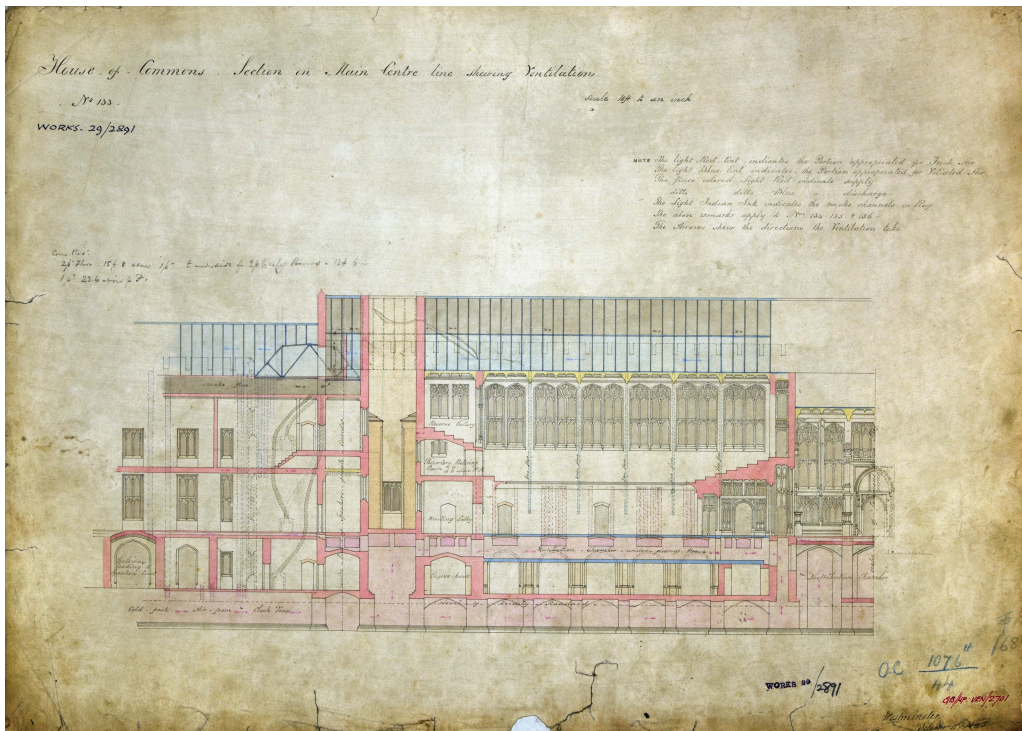


Fig 6. Longitudinal section through the House of Commons debating chamber, showing shafts and channels for supply and extraction of air, by Reid, 11 October 1845, PRO, Work: 29/2891. *Photograph: © National Archives, Kew.*

and paved floors inside the basement.⁴⁶ Reid argued that it provided an economical method of cooling at a large scale. Cooling methods involved passing air through nets filled with ice, as

46. Oral report by Reid on 30 Sep 1841 (Ev 22 Q157) in GB Parliament 1841; Reid 1856, 159.

tried inside the temporary Houses but not viable due to the cost and limited availability of natural ice.⁴⁷ The arrows shown on a cross-section of the House of Commons, dated 11 October 1845,⁴⁸ indicate that cool air could be admitted directly from the basement into the equalising chamber using vertical ‘ascending shafts’ at the south and north ends of the House. Equipped with adjustable valves, these shafts allowed the cool air to by-pass the heating chamber or to mix cool and warm air (see fig 6).

HARNESSING NATURAL PRINCIPLES

The vitiated air of the House of Commons was extracted through the Central Tower, which acted as the central up-cast shaft for the whole palace. In contrast to the Victoria Tower and Clock Tower, the Central Tower had not been part of Barry’s original architectural plans. It was added retrospectively and, as the cost for the tower was not covered by the original budget approved by the Treasury in 1836, his scheme underwent extensive review. In several oral reports to the Select Committee on Ventilation between 1841 and 1842, Reid argued that the tower had two important functions.⁴⁹ The first was to protect the atmosphere around the palace from its own emission by discharging the smoke of its several hundred fireplaces at a high altitude. His second objective was to eliminate the high running costs of mechanically operated systems by harnessing natural convection and wind pressure. The use of fires or fans was to be limited to periods when adequate ventilation could not be sustained through the ‘natural impulse of the air as introduced by currents of wind, and the natural tendency of hot and vitiated atmosphere to escape’.⁵⁰ He claimed that its effectiveness relied on the height of the shaft and, between 1841 and 1843, he proposed towers ranging from 150ft to 250ft in height.⁵¹ These were also moved to an elevated position above the roof so that hot air could rise more naturally into the shaft. The buoyancy within the shaft was to be maintained by exploiting body warmth and waste heat from smoke (fireplaces and boilers), gas fumes (lighting) or kitchens.⁵² Ventilating fires were only to be deployed temporarily to boost the ventilation, typically when the House got crowded or during summer, when the quantity of waste heat was limited.⁵³ To convey the vitiated air and fumes of several hundred rooms into the Central Tower, Reid planned an extensive network of large flues, which were situated below the roof.⁵⁴

The original cross-section and plans illustrate how the House of Commons was intended to be integrated into this system. The hot air from the debating chamber and division lobbies was collected inside the ‘vitiating air chamber’ above the ceiling,⁵⁵ which was

47. In the early and mid-19th century, ice was not produced artificially; early Victorians relied on the supply of natural ice, which was harvested in winter and stored inside icehouses for use over the summer months: Hiles 1893, 8–11. Ice began to be imported from the USA in the 1840s, but it remained expensive until the late 19th century: Kistler *et al* 1984; Weightman 2003.

48. Reid 1845a [plans].

49. GB Parliament 1841, 1842.

50. Reid 1856, 159; oral report by Reid on 24 Sep 1841 (Ev 8–10 Q7–13) in GB Parliament 1841.

51. Oral report by Barry on 14 Aug 1846 (Ev 7–8 Q17) in GB Parliament 1846a; Reid 1847j [plans], 1847l [plans].

52. Oral report by Reid on 26 Jul 1842 (Ev 11 Q56) in GB Parliament 1842.

53. *Ibid* (Ev 14 and 6 Q4 and Q83).

54. Oral report by Reid (on 24 Sep 1841 (Ev 10 Q17) in GB Parliament 1841.

55. The term ‘vitiating air’ was used in the 19th century to describe room air deteriorated due to human respiration: Carter 1981.

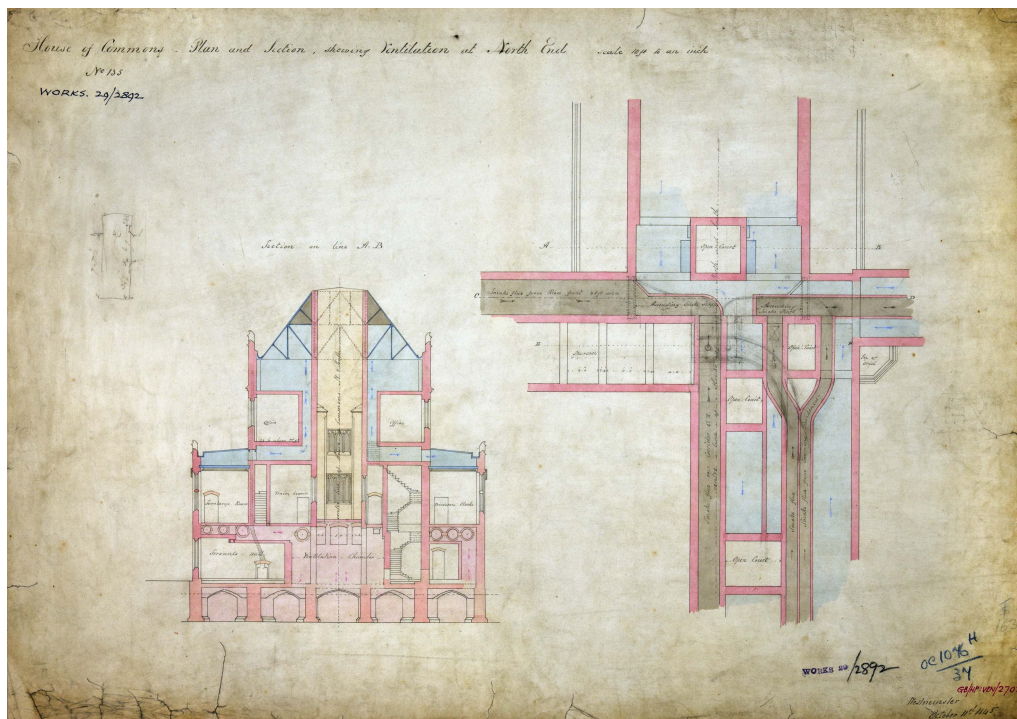


Fig 7. Plan and cross-section showing the vitiated air (blue) and smoke (grey) channels above the ceiling of the House of Commons, north end, by Reid, 11 October 1845: PRO, Work: 29/2892. Photograph: © National Archives, Kew.

connected to the bottom of the Central Tower through a horizontal air channel (fig 7). The smoke channels were located on the floor above the vitiated air chamber. Conscious that the pull of the Central Tower would not be sufficient to ventilate several hundred rooms simultaneously, Reid introduced valves that permitted individual spaces, including the debating chambers, to be switched to the shaft whenever they were occupied.⁵⁶

This shows that Reid's proposal was based on a highly developed understanding of the capabilities as well as the limitations of natural ventilation utilising convection or wind pressure, which Reid also described in several textbooks.⁵⁷ In *Rudiments of Chemistry* (1836) and *Elements of Practical Chemistry* (1830), he introduced the science behind the natural movement of air induced by atmospheric pressure, gravity or thermal buoyancy. He also demonstrated how it can be studied experimentally in the laboratory or exploited in buildings to drive ventilation.⁵⁸ The application of such natural principles was not limited to the design of the up-cast shaft. Reid also spoke of the possibility of reducing the use of fan-driven supplies by exploiting the wind, whenever available, to deliver fresh air into the basement.⁵⁹ As such, it has close resemblance to the 'mixed-mode' approach used in

56. Reid, 'Statement explanatory of the arrangements for warming and ventilating the new House of Commons', 5 Apr 1852 (Ev 545–48) in GB Parliament 1852a.

57. Reid 1844, 93–6.

58. Reid 1830, 1836, 184–85.

59. Reid 1856, 159; oral report given by Reid on 30 Sep 1841 (Ev 22 Q156) in GB Parliament 1841.

modern sustainable buildings, such as the Weber Centre, Judson College, Chicago,⁶⁰ where mechanical services are utilised to complement, not replace, natural principles. This reinforces Vida Lerum's argument that nineteenth-century architecture can provide potential lessons for sustainable environmental design in the twenty-first century.⁶¹

THE CHALLENGE OF ACCOMPLISHING A COMFORTABLE DEBATING CHAMBER

The proposal for an air-conditioned debating chamber described in the previous section formed part of a more complex system of climatic control that Reid had developed to enhance thermal comfort. It was the culmination of detailed studies of MPs' perception of indoor climates and air quality inside the two temporary chambers. These studies, which drew on research methods used by Reid in early laboratory experiments in Edinburgh, show most clearly how his medical background had shaped the perspective and working methods underlying the design of the ventilation system. Detailed accounts of these early experiments were published in two books, *Illustrations of the Theory and Practice of Ventilation* (1844) and *Ventilation in American Dwellings* (1858), and in several lectures.⁶²

One series of these experiments examined the physiological effect of air purity and climates. Volunteers were exposed to different climatic conditions and atmospheres of varying air quality, then interviewed on how these affected their concentration, appetite or physical well-being.⁶³ Similar methods were used to empirically evaluate and refine technical solutions. In the lectures, *Progress of Architecture* (1856) and *The Revision of Architecture in Connection with the Useful Arts* (1855), Reid described experimental rooms he had erected to study ways of diffusing air currents, with different configurations of perforated walls, floors or ceilings.⁶⁴ Volunteers were placed inside these rooms to provide feedback on the thermal sensations produced by the incoming air currents and how these were affected by velocity, temperature or humidity. A similar approach was used in the model of the debating chamber to examine how the higher ventilation rates – necessary to maintain good air quality standards under crowded conditions – could be achieved without causing uncomfortable draughts.⁶⁵ As before, its evaluation was based on the self-reported experience of volunteers.⁶⁶ It demonstrated that higher ventilation rates were achievable if the system switched from an upward supply through the perforated floor to a downward supply from the ceiling.

Tests continued inside the two debating chambers of the temporary Houses of Parliament, but this time under real-life conditions and involving MPs and lords, not volunteers. In the temporary House of Commons, where Reid was unable to implement a switchable supply, the air was continually supplied upwards through a perforated floor. According to interviews with MPs, this resulted in problems with cold feet and legs, which became particularly severe during crowded debates when the ventilation rate was boosted to prevent overheating and to maintain a fresh atmosphere.⁶⁷ In his scheme for the permanent Houses of Commons and Lords, Reid proposed to address this issue by returning to more complex

60. Lomas *et al* 2009.

61. Lerum 2016.

62. Reid 1844, 176–81, 334–35; Reid and Harris 1858, xix–xxiv.

63. Reid 1837b.

64. *Builder* 5 May 1855; Reid 1856.

65. Reid 1837a; GB Parliament 1835.

66. GB Parliament 1838; *Caledonian Mercury* 28 Jul 1836.

67. Oral report by Reid on 6 Aug 1844 (Ev 68 Q557) in GB Parliament 1844b.

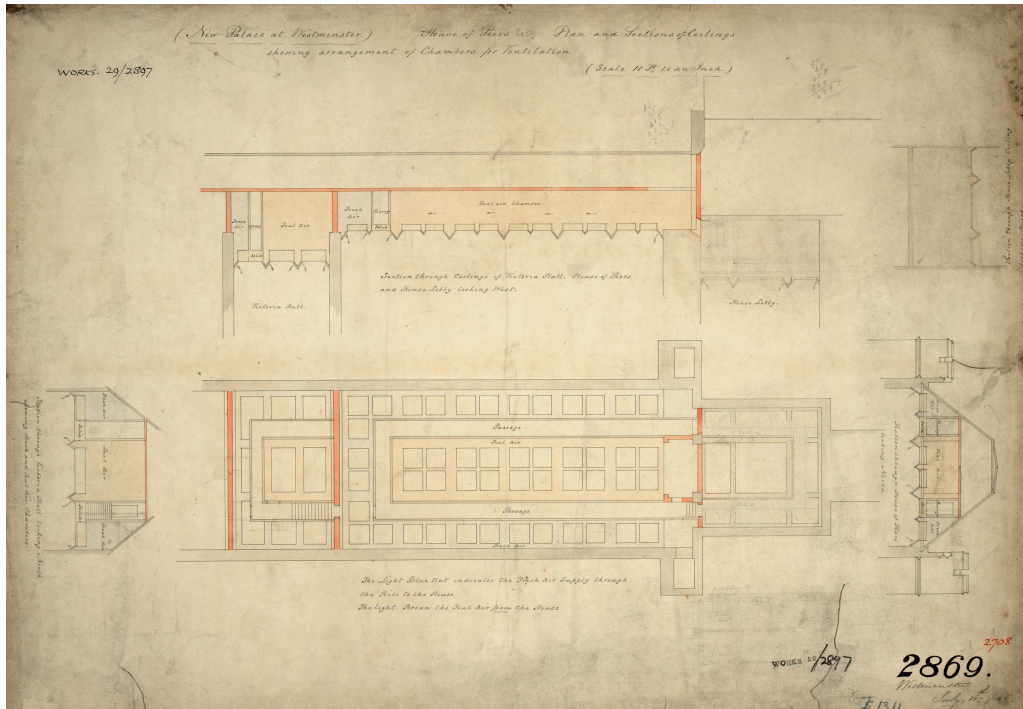


Fig 8. Sketch of proposal for the supplying and extracting of air through the ceiling, by Reid, 16 July 1845, PRO: Works 29/2897. Photograph: © National Archives, Kew.

arrangements that permitted air to be supplied and extracted at floor and ceiling level (fig 8).⁶⁸ Sketches produced between January and October 1845 outline proposals for the ceiling of the House of Lords (fig 9).⁶⁹ These show a chamber for the extraction of vitiated air above the central row of ceiling panels, which was connected to the Central Tower.⁷⁰ Fresh air, which was supplied from the basement through a vertical shaft, was introduced through the side panels.⁷¹

In the temporary House of Commons, MPs were actively involved in evaluating the artificial climate within the debating chamber.⁷² By pinpointing difficulties in achieving the right conditions, their feedback informed Reid's effort to refine his system.⁷³ To gain tighter control over different climatic factors affecting thermal comfort, his system evolved into something more complex that incorporated a form of air-conditioning and sophisticated methods of environmental monitoring. The latter combined the recording with physical measurements and MPs' feedback. The attendants working the ventilation continually engaged with MPs, acquiring an intimate understanding of their response to various environmental stimuli. Being a psychological state, thermal comfort was not directly

68. Oral report given by Reid on 14 Aug 1846 (Ev 47 Q36) GB Parliament 1846a.

69. Reid 1845b, 1846, 1847g [plans].

70. Reid 1845c [plans].

71. Reid 1845d, 1845e, 1845f [plans].

72. Reid 1863, 16–8.

73. This process of technical refinement is discussed in detail in Schoenefeldt 2014, 175–215.

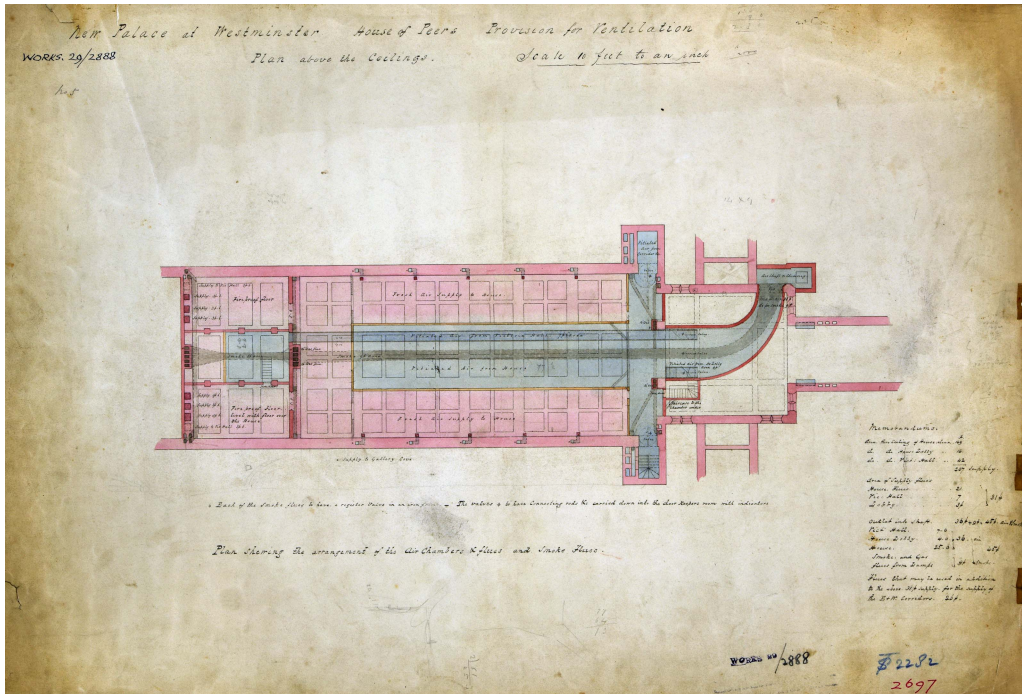


Fig 9. Schematic drawing of proposed air chambers above the ceiling of the House of Lords, by Reid, 1845, PRO: Work 29/2888. Photograph: © National Archives, Kew.

measurable through scientific instruments, but required qualitative methods. Reid noted that it allowed gathering ‘information as to the ever-changing feelings of members, of which no one can possibly judge but themselves’.⁷⁴ In *Illustrations of the Theory and Practice of Ventilation*, Reid highlighted that thermal comfort was not only affected by environmental, but also personal, factors such as clothing, health conditions or the level of physical activity.⁷⁵

Demonstrating a methodology by which the perceived reality could be continually ‘metered’ alongside the measuring of physical stimuli, this monitoring system could be considered an early example of psychophysical principles being applied to architecture. Reid’s perspective resembles very closely what the German scientist Gustav Fechner described as *äussere psychophysik* (outer psychophysics). In *Elemente der Psychophysik*, published in 1860, Fechner described outer psychophysics as a scientific field concerned with the correlation between physical stimuli (*äusserer reiz*) within the environment and the sensations (*innere empfindung*) they produce.⁷⁶ Although his approach was less systematic than Fechner’s later method, Reid reviewed these self-reported experiences to determine how one’s perception of thermal comfort might be affected by climatic conditions. Analysing several years of user-responses and measured data collected inside the temporary

74. Oral report by Reid on 17 Jun 1844 (Ev 27 Q321) in GB Parliament 1844c.

75. Reid 1844, 168–73.

76. Fechner 1860.

House of Commons, he attempted to determine the conditions in which the majority of MPs felt comfortable. Reid wrote:

as far as I have been able to observe, a temperature of 65F, with an atmosphere moving in a very gentle stream, so as not to be perceptible, is the most agreeable in rooms that are not overcrowded.

Referring to humidity, he reported:

when there is a difference between 5F between the dry thermometer and wet-bulb thermometer next to it, I have the least number of complaints.⁷⁷

Managing a climate based on experience was a difficult process due to conflicting feedback from different MPs. Reid reported that there was:

scarcely a meeting of the House at which there are not some Members who would like the temperature to be at 55F degrees, and others at 70F or 72F.⁷⁸

It required the Sergeant-at-Arms, Sir William Gosset, to moderate the responses of individual MPs. In 1839, Gosset wrote:

sometimes Members come to me, and say the House is very hot, or very cold; I look at the thermometer, and see if so, for different people have different feelings with regard to temperature. People come in very hot, and say, 'How cold the House strikes', and another man says 'I have been sitting here half an hour, and I am in fever', and if I see the thermometers are too high or too low, I give directions accordingly⁷⁹

Starting in 1838 Reid used the temporary House of Lords to test an alternative approach to climate control. He explored how far thermal comfort could be improved if the interior was divided into different climate zones instead of being uniform.⁸⁰ Crowded areas, being more likely to experience overheating, were supplied with cooler air than more sparsely populated areas. The temperature in one section could be as low as 52°F and as high as 75°F in another. In the House of Commons, Reid and the Sergeant-at-Arms reported that it was difficult to achieve a consensus among MPs when the climate was uniform, making climate control a political struggle. Continuous attempts were made to manage the shared climate according to the preference of the majority, while dealing with a few individuals who were vocal about their dissatisfaction.⁸¹ Reid noted that the:

only alternative has frequently been to make a local change under the benches occupied by them [certain individuals] or suit their convenience at the expense of incommoding the House generally, unless they were left subject to an amount of annoyance of which they bitterly complained, for the state of the air being more congenial to those around them than to themselves.

77. Oral report by Reid on 26 Mar 1852 (Ev 47–82 Q331–530) in GB Parliament 1852a.

78. Ibid, oral report by Reid on 29 Mar 1852 (Ev 99–100 Q642).

79. Oral report by Gosset on 24 Jun 1839 (Ev 39–51 Q693–742) in GB Parliament 1839.

80. Oral report by Reid on 17 Jun 1844 (Ev 27–8 Q317–23) in GB Parliament 1844c.

81. Ibid, oral report by Reid on 17 Jun 1844 (Ev 27–35 Q320–87).



Fig 10. Cartoon published in *Punch* using a brewery as an analogy for Reid's concepts of locally tailored climates. *Source*: *Punch*, 18 April 1846, reproduced with permission of British Cartoon Archive, University of Kent.

Eyewitness accounts given by the Lords between 1838 and 1846 suggest that the new approach had failed to achieve a more comfortable environment. Lord Campbell wrote in September 1843 that while the air quality had improved, the Lords suffered from a lack of control over temperatures and currents.⁸² During one debate (February 1843), he complained that the 'alternate heat and cold of the place made it at one time a cold bath, and at another a vapour bath'.⁸³ In June 1845, Lord Brougham and the Marquess of Clanricarde complained about the 'wretched state' of the atmosphere and Campbell noted that some peers 'suffered so severely last night from the imperfect ventilation, and the sudden draughts of hot and cold air'.⁸⁴ On 24 April 1846, Brougham described the chamber as 'sometimes broiling and sometimes freezing',⁸⁵ and the next month Campbell noted that 'nothing could be more detestable than the result of the learned doctor's experiments in their Lordships' House'.⁸⁶ Despite wide disapproval, Reid followed the same concept in his plans for the permanent Houses of Lords and Commons. He argued that the technical arrangements had been constrained by funding, but the main issue was insufficient co-operation, with the Lords not providing the regular feedback necessary to implement the idea of a responsive system.⁸⁷

In several interviews, Reid described how he intended to apply the concept to the permanent House of Lords. The interior was to be divided into five climatic zones, located around the ministerial and opposition benches, throne, bar and within the central floor. In each zone, the climate and air supply would be regulated according to the number of peers present, but in addition each bench would be equipped with a separate supply to achieve a

82. Lord Campbell 1843.

83. *Hansard* HL Deb. vol 66 cols 1033–6, 21 Feb 1843.

84. *Hansard* HL Deb. vol 81 cols 120–2, 5 Jun 1845.

85. *Hansard* HL Deb. vol 85 cols 970–6, 24 Apr 1846.

86. *Hansard* HL Deb. vol 87 cols 1033–5, 26 Jun 1846.

87. Reid 1844, 292–3; oral report by Reid on 17 Jun 1844 (Ev 27–35 Q320–87) in GB Parliament 1844c.

greater level of local control.⁸⁸ These supplies were only to be activated by the attendants on request, and individual control was limited to peers who had to sit inside the chamber for extended periods. Reid's objective was to give 'all who are tied down to official seats a ventilation in unison with their own feelings to a certain extent, while the general ventilation is arranged for the House'.⁸⁹ The satirical magazine *Punch* likened Reid's system to a brewery, offering members 'draughts of different kinds of atmosphere' (fig 10).⁹⁰

THE HOUSE OF COMMONS BECOMES AN INDEPENDENT SYSTEM

The correspondence shows that efforts to apply Reid's ventilation scheme were undermined by difficulties in achieving a successful collaboration between Reid and Barry. From 1844 to 1845, Reid and Barry had several disputes, including: the cross-section of the Central Tower;⁹¹ the use of roof spaces for conveying air and smoke to the Central Tower;⁹² and potential fire risks.⁹³ Despite several attempts by the Department of Woods and Forests to moderate the negotiations, these difficulties remained unresolved and Reid's scheme was finally abandoned in autumn 1846, following a parliamentary inquiry.

Having caused delays and rising costs, several reviews of the impact of Reid's involvement were undertaken between 1845 and 1846. It involved two Select Committees, appointed by the House of Lords and Commons, respectively,⁹⁴ and an independent review of Reid's working methods by the architect Joseph Gwilt.⁹⁵ Barry, Reid and Alexander Milne, First Commissioner of Woods and Forests, were interviewed about the process, which revealed that Reid's ability to collaborate with the architect and his engineers had been compromised by insufficient drafting skills and experience with architectural design as a process. While he had deep knowledge of general scientific principles, his experience with translating these principles into technical solutions or incorporating them into architectural plans was limited.

Goldsworthy Gurney, a physician and expert in the ventilation of mines and sewers, also questioned the technical feasibility of Reid's scheme.⁹⁶ He challenged it in a petition read at both Houses in April 1846.⁹⁷ Claiming that the palace was too large to be ventilated by a single chimney,⁹⁸ he proposed to replace it with a system of local shafts.⁹⁹ The Department of Woods appointed three referees – the engineer George Stephenson, the architect Phillip Hardwick and the chemist Thomas Graham – to review these claims.¹⁰⁰ They approved his critique, arguing that the centralised scheme, if applied to the entire palace, would become overwhelmingly complex, and that it could be simplified by using a series of smaller up-cast shafts. Barry also offered to take on the responsibility of ventilating the House of Lords, guaranteeing completion in 1847 if done without Reid's interference. The committee accepted his proposal

88. Oral report by Reid on 6 Aug 1844 (Ev 65–9 Q535–63) in GB Parliament 1844b.

89. Oral report by Reid on 19 Mar 1846 (Ev 90 Q985) in GB Parliament 1846f.

90. *Punch* 18 Apr 1846, 16 May 1846.

91. Oral report by Reid on 14 Aug 1846 (Ev 42 Q22) in GB Parliament 1846a.

92. Barry 1845a [letters]; Reid 1845a, 1845b [letters].

93. Barry 1845b, 1845c [letters]; Reid 1845c, 1845d, 1845e, 1845f [letters].

94. GB Parliament 1846a, 1846c–f.

95. Oral report by Barry on 23 Feb 1846 (Ev 8 Q21) in GB Parliament 1846a.

96. *Times* 26 May 1846.

97. *Hansard* HL Deb. vol 85 col 1142, 28 Apr 1846; *Hansard* HC Deb. vol 85 cols 788, 21 Apr 1846.

98. Oral report by Gurney on 11 May 1846 (Ev 24–30 Q4–51) in GB Parliament 1846a.

99. *Ibid*, oral report by Gurney (Ev 31 Q54).

100. GB Parliament 1846b.



Fig 11. Aerial view of the Houses of Parliament (looking eastwards) showing the position of local ventilation shafts introduced by Reid and Barry after abandoning the central up-cast shaft in 1846, c 1900, PED: Farmer 743. *Photograph:* © Parliamentary Estates Directorate.

in August 1846, arguing that further delays in the completion of the House could be prevented if Barry's office was given full control over all aspects of the design.¹⁰¹

REID'S FINAL DESIGN (1847–52)

Reid's masterplan was abandoned in September 1846 and the ventilation was reorganised following the referees' proposal for a decentralised strategy. Reid's responsibility was confined to the House of Commons,¹⁰² a decision that Reid challenged by undertaking several unsuccessful attempts to get parliament to review the decision.¹⁰³ His new territory extended from the north end of the Central Hall to the corridor behind the Speaker's chair and included the Commons' lobby and division corridors.¹⁰⁴ The ventilation in other parts of the palace, including the House of Lords, came under Barry's control. Assisted by his engineers, Alfred Meeson and William Jeakes, and involving Michael Faraday as technical adviser, Barry developed a new system. The concept of a central up-cast shaft was abandoned and replaced by several local shafts, which had the external appearance of Gothic spires.¹⁰⁵ Added gradually between 1847 and 1855, these shafts resulted in a significant architectural transformation of the roof-scape (fig 11).

On 5 April 1847, he send a set of over forty drawings to the Office of Woods, outlining a new scheme for the House of Commons that still adhered to his earlier concepts. Some

101. GB Parliament 1846a, 41.

102. A detailed exploration of these negotiations can be found in Schoenefeldt 2016a.

103. Reid 1849 [letters].

104. Oral report given by Reid on 25 Mar 1852 (Ev 22 Q168–72) in GB Parliament 1852a.

105. *Builder* 21 Feb 1852, Reid 1852.

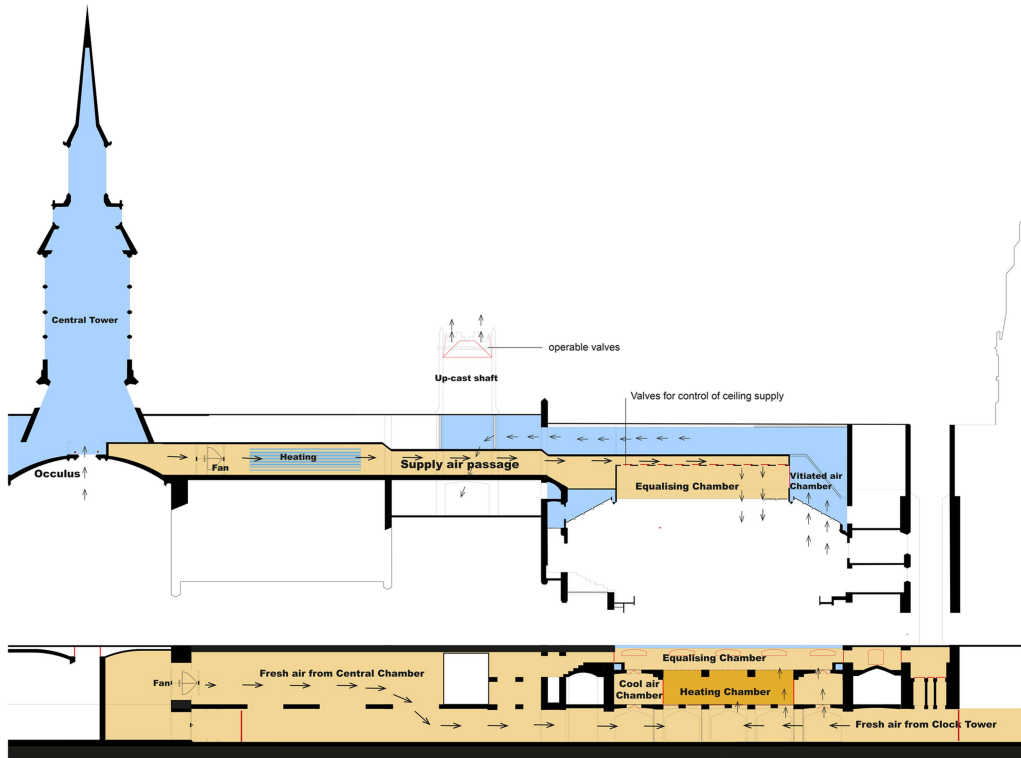


Fig 12. Cross-section, showing ceiling and floor systems implemented between 1847 and 1852. *Drawing: author.*

features that were already completed according to his original plans were re-used.¹⁰⁶ These included the equalising chamber, supply ducts for the east and west galleries¹⁰⁷ and the four large shafts supplying the galleries at the north end.¹⁰⁸ Other features, including the air supply, had to be re-modelled as the House was no longer integrated into the palace's central supply and discharge system. It had to work as an independent system. The ventilation at ceiling and floor level were designed as separate systems, each equipped with its own set of fresh air inlets, up-cast shafts and climatic control arrangements (fig 12).

THE CEILING SYSTEM

Reid's new design was implemented between May 1847 and February 1852, but the plans underwent several modifications. The design of key features, such as the air supply for the ceiling inlets, was the outcome of intense negotiations involving Reid, Barry and several committees. Although his involvement had been restricted to the House of Commons, Reid still required Barry's approval for critical features of his system. The disagreements over

106. Barry 1845 [parliamentary papers]; Barry's report as to the present stage of the works at 4 Apr 1845 and 1 Nov 1845, in GB Parliament 1846f, 187.

107. Reid 1844b [plans].

108. Reid 1845c [plans].

design decisions continued and in 1848 the Office of Woods appointed a commission to supervise the communication between Barry and Reid.¹⁰⁹

In spring 1847, Barry reduced the height of the Central Tower.¹¹⁰ He argued that the great height of former designs for the tower was no longer required, for functional or architectural purposes.¹¹¹ Barry proposed converting it into a local shaft for the Lords. Initially, Reid had hoped to retain the tall tower as a fresh air inlet for the ceiling system, which could be operated independently from the floor system served by the Clock Tower.¹¹² Without access to the Central Tower, Reid introduced a new shaft on the west side of the Commons lobby.¹¹³ In June 1848, following twelve months of intense negotiations, Reid and Barry agreed a new arrangement for the ceiling supply.¹¹⁴ The primary inlet was embedded within the cast-iron roof facing the river and equipped with adjustable louvres.¹¹⁵ When it was exposed to pollution, the supply was switched to a second inlet located within a turret at the north-west corner of St Stephen's porch.¹¹⁶ The fresh air was conveyed to the House through passages under the roof. The ceiling supply had its own fan and heating:¹¹⁷ the fan was located at the north side of the Central Tower and air was warmed within a passage lined with steam pipes. This passage terminated in the fresh air chamber above the central ceiling panels (fig 13). Air was admitted into the debating chambers through gaps between the panels and openings inside hollow ornamental beams.¹¹⁸ It was adjusted manually by means of sliding valves.¹¹⁹

The vitiated air chamber, which was situated above the side panels, was connected to the new up-cast shaft. Air entered at the base of the shaft and was exhausted through cast-iron valves on the top that could be adjusted with the aid of pulleys.¹²⁰ The pull produced by the rising hot air, which at times was enhanced with coke fire, drove the vitiated air out of the debating chamber. As it was not strong enough to ventilate the debating chamber and lobbies simultaneously, valves were used to connect the shaft to individual spaces, including the Commons' Lobby, the Ladies' Gallery and the Strangers' Gallery.¹²¹ During votes, for instance, valves were switched to re-direct the pull from the House to the division lobbies.¹²²

109. *Hansard* HC Deb. vol III cols 458–60, 30 May 1850; Commissioners of Works 1851, letter to Reid.
110. Barry's original plan for the Central Tower was never realised. It only served as a discharge for hot air from the central lobby and several corridors. Fresh air was supplied from the central chamber through the cast-iron gratings in the floor of the lobby and escaped through the oculus in the ceiling vault.
111. Gore 1841.
112. Reid 1847k [plans].
113. Reid 1847 [letters], 1847i [plans].
114. Reid 1848b [plans]; Barry 1849 [letters]; Commissioners for the Completion 1849 [letters]; Treasury 1849 [letters]; Reid, 'Statement explanatory of the arrangements for warming and ventilating the new House of Commons', 5 Apr, in GB Parliament 1852a, 545–8.
115. Reid 1848e [plans].
116. Reid 1848f [plans], 1851a [plans]; oral report given by Reid on 26 Mar 1852 (Ev 56–62 Q373–407) in GB Parliament 1852a.
117. Reid 1847i [plans]; Reid 1850a [plans].
118. Barry 1851a [plans]; oral report by Barry on 5 Apr 1852 (Ev 224 Q1491) in GB Parliament 1852a; *Civil Eng Archit J*, Sep 1852.
119. These valves are shown in several drawings, such as: Reid 1847a [plans], 1847f [plans].
120. Reid 1847m [plans], 1848c [plans]; Anon n.d(a), n.d(b) [plans].
121. Reid, 'Statement explanatory of the arrangements for warming and ventilating the new House of Commons', 5 Apr, in GB Parliament 1852a, 545–8.
122. Oral report by Reid on 30 Apr 1852 (Ev 495 Q3573) in GB Parliament 1852a.

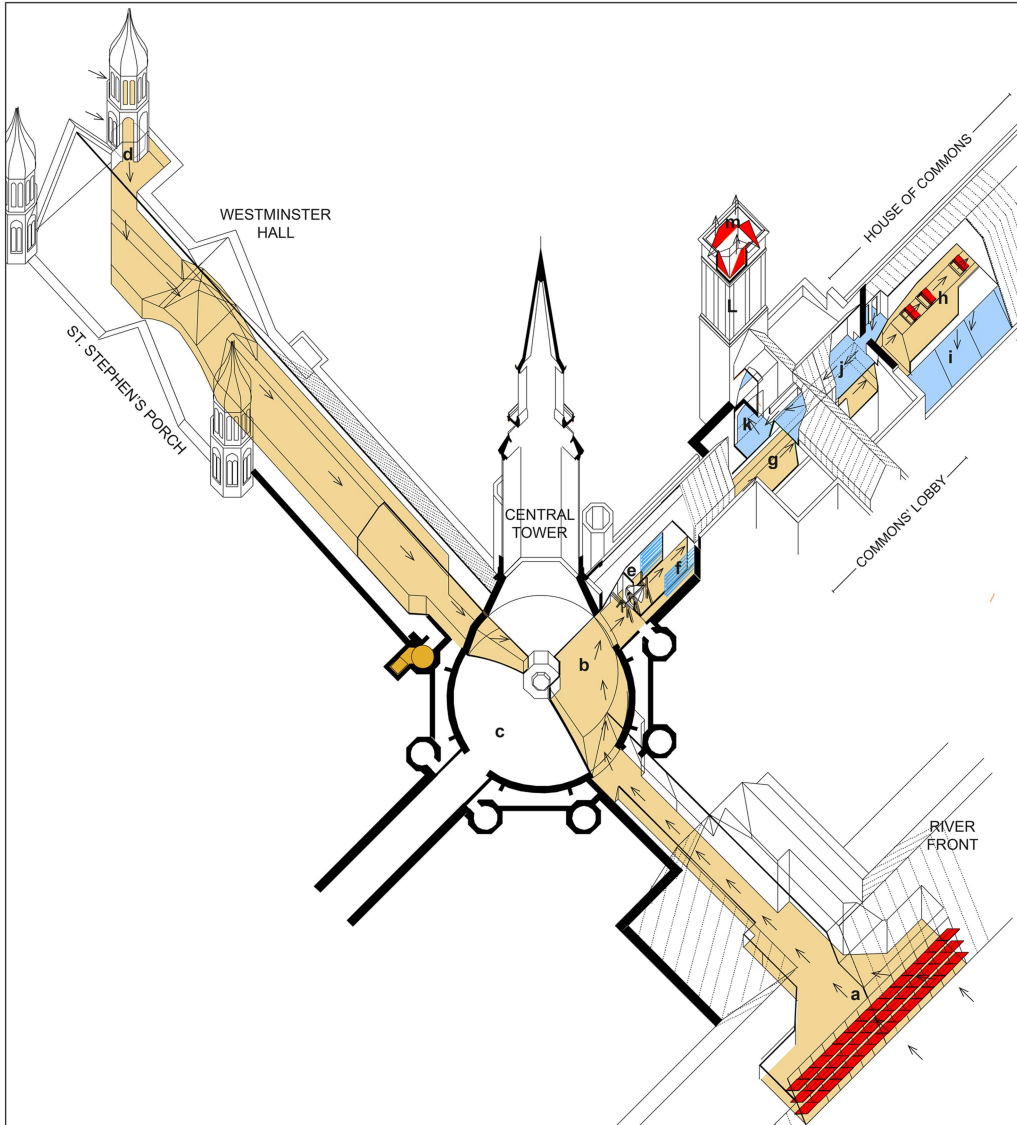


Fig 13. Axonometric projection outlining the ceiling system. *Drawing:* author.
 Key: a. principal air inlet of the ceiling system with adjustable cast-iron louvres; b. fresh air channel passing through Central Tower, with diagonal wall marking the boundary between Barry and Reid's territory; c. area connected to the House of Lords (Barry); d. back-up inlet for ceiling system, inside turret; e. fan; f. steam pipes; g. supply passage leading to House of Commons; h. fresh air chamber above central ceiling panels of House of Commons; i. vitiated air chamber above sloping side panels of ceiling; j. passage connecting vitiated air chamber with up-cast shaft; k. base of up-cast shaft, with coke fire; L. up-cast shaft; m. louvres valves at outlet of up-cast shaft.

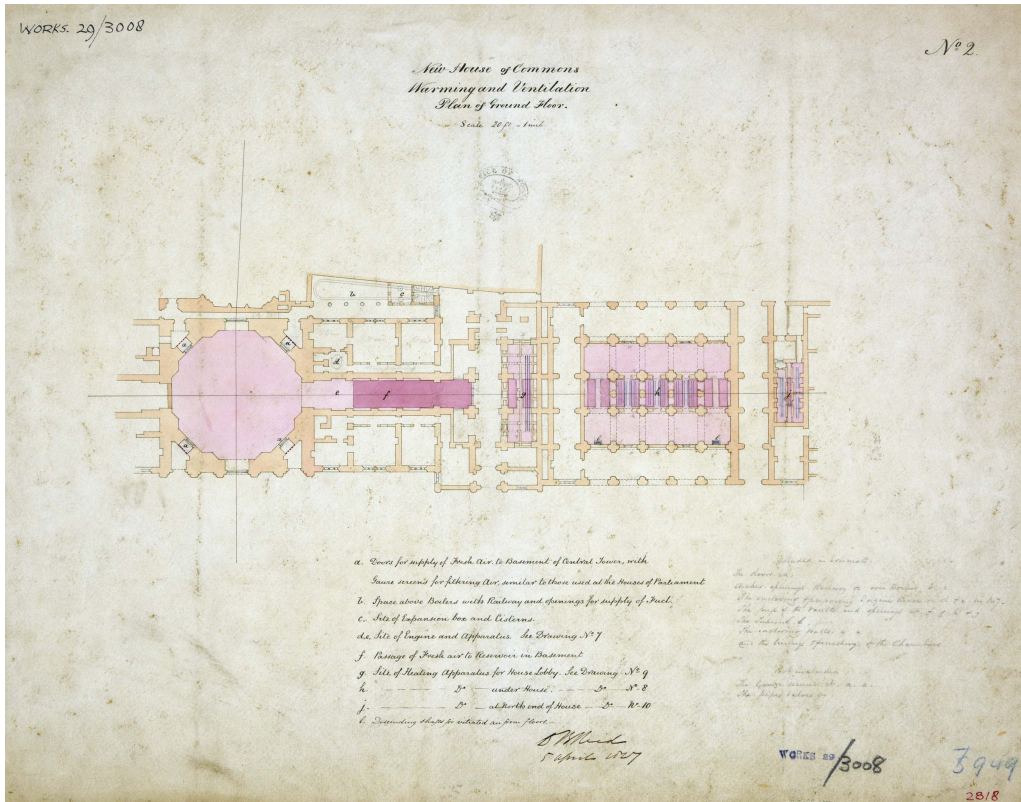


Fig 14. Sketch of ground floor showing original proposal for using the whole central chamber with its four inlets as back-up supply for the floor level system, by Reid, 5 April 1847, PRO: Work 29/3008. Photograph: © National Archives, Kew.

THE FLOOR SYSTEM

The territorial border drawn in 1846 required Reid to develop a new supply for the floor system. Barry retained parts of the centralised supply within his territory, using the Victoria Tower as the main inlet, but it was physically separated from the House of Commons. As the House had only access to the high-level inlet inside the Clock Tower, Reid adopted the central chamber as a new back-up for periods when the Clock Tower could not be deployed due to air pollution.¹²³ Mirroring the principles of the roof level inlets, the use of switchable inlets was part of Reid's strategy to make the building more responsive to changing levels of air pollution. His initial plan was to use the whole central chamber to switch the supply between the four surrounding courts, depending on pollution levels (fig 14).¹²⁴ In July 1848, however, Barry subdivided the chamber because he required the south side for his own system (fig 15).

Within Barry's territory, the fresh air admitted through the Victoria Tower was conveyed into the southern half of the chamber, where it was tempered using a heating and

123. Barry 1848b [letters]; oral report by Reid on 26 Mar 1852 (Ev 61 Q402–3) in GB Parliament 1852a.

124. Reid 1847b, 1847c, 1848d [plans].

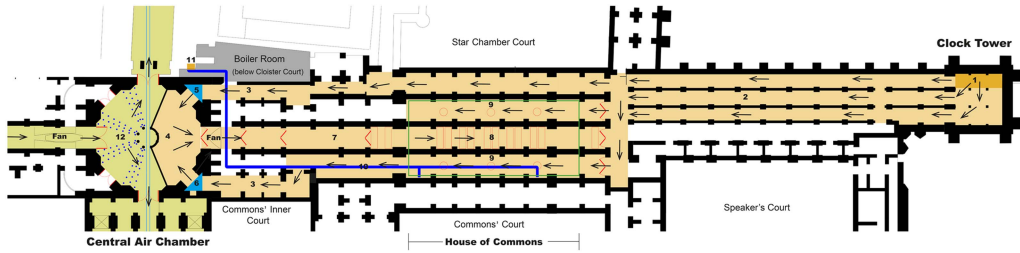


Fig 15. Plan of basement under House of Commons, showing system of fresh-air passages, including the central chamber with diagonal wall marking the boundary between Barry and Reid's territory. *Drawing*: author.

Key: 1. inlet shaft; 2. fresh air passages; 3. fresh air passages leading to the central chamber; 4. central chamber; back-up inlet inside central chamber, including one inlet facing Cloister Court (5) and another facing the Commons' Inner Court (6); 7. air main leading from central chamber to House of Commons which contained valves (8) opening into the heating chamber above; 9. cold air passages that contained valves for admission of air into the cold air compartment above; 10. flue linking floor level extract to boiler flue (11); 12. Barry's side of the central chamber with heating pipes.

humidification system before entering the supply passages leading towards the river front, St Stephen's Hall and the House of Lords.¹²⁵ As a result, Reid was left with only two apertures giving access to fresh air in the Cloister Court and Common Inner Court (fig 16).¹²⁶

Within Reid's territory, the air admitted through this central chamber or the Clock Tower was conveyed to the House through basement passages and ascended through ceiling valves into the heating and cool air chambers on the ground floor (fig 17).¹²⁷ Three rectangular valves were provided for the heating chamber, which was filled with hot-water pipes, and twelve circular valves provided for the cool air compartment surrounding the heating chamber.¹²⁸ At the next stage, the cool and heated air rose through separate valves into the equalising chamber. Temperature and relative humidity were monitored using a hygrometer and twenty thermometers.¹²⁹ The air was tempered using the air-conditioning system tested in the temporary House of Commons. The permanent chamber had facilities for cooling, heating, humidifying and dehumidifying the supply air.¹³⁰ The humidity of the supply air was raised with the aid of steam or by evaporating water, and was lowered using an 'absorbent of moisture', which Reid did not specify. Cooling was provided via passive, non-mechanical means. The supply air temperature was lowered by passing cold water through the heating pipes or, if the air was sufficiently dry, by evaporating distilled water. Ice – used for brief trials in the temporary House – was not deployed. In addition to lowering the actual air temperature, Reid exploited the cooling sensation produced by air currents passing over the human skin, which lowered the perceived temperature.

125. Barry, 'Description of the mode of warming and ventilating the House of Lords', 2 Apr, in GB Parliament 1852a, 600–1; Barry 1849, 1850, 1852 [plans].

126. Barry 1848b [letters].

127. Reid 1847d, 1847e, 1851b [plans].

128. Reid 1847h [plans].

129. Oral report by Reid on 20 Apr 1852 (Ev 52–4 Q361) in GB Parliament 1852a.

130. *Ibid.*, 545–8.

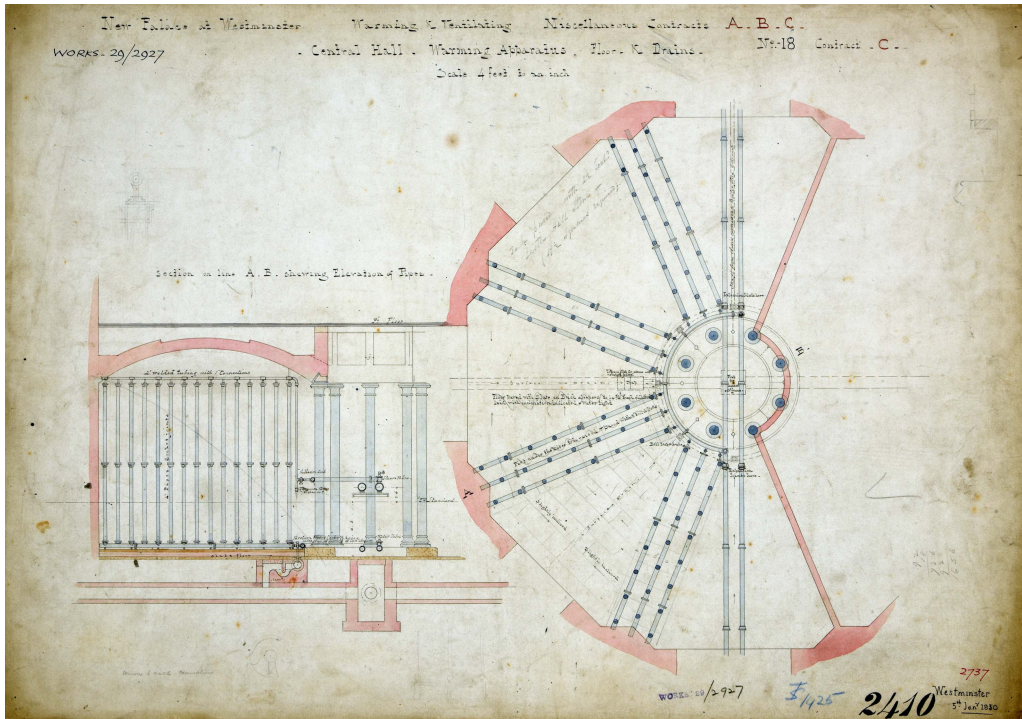


Fig 16. Plan and cross-section of steam pipes on Barry's side of the central chamber, by C Barry, 5 January 1850, PRO: Work 29/2927. Photograph: © National Archives, Kew.

In winter the supply air temperature was controlled by adjusting the temperature of the heating pipes, but a process of mixing heated and unheated air was used to lower the temperature in response to sudden changes in attendance. The valves above the heating chamber could be closed, and heated air re-directed into the surrounding cool air chamber.¹³¹ When the House had to be cooled down more rapidly, the heating chamber was closed completely, and cool air admitted directly from the basement.

The floor was covered with perforated cast-iron plates, but, in contrast to the temporary House of Commons, where fresh air was admitted across the entire floor, it had outlets to extracted vitiated air downwards as well as inlets to supply fresh air upwards. Inlets were confined to areas where MPs were not exposed to currents. Air was supplied through the floor between the table and bar, risers in the gangways¹³² and along the back of the benches. The chairs for the Speaker and Sergeant-at-Arms had individual supplies. The supplies could be adjusted individually by attendants inside the equalising chamber, using over sixty sliding valves. The inlet along the back of every bench had ducts with individual valves (fig 18).¹³³

131. Oral report by S W Daukes on 5 and 6 Apr 1852 (Ev 258 and 270, Q1812 and Q1931) in GB Parliament 1852a.

132. Ibid, oral report by Reid on 30 Apr 1852 (Ev 484 Q3545).

133. Barry 1851b, 1851c [plans].

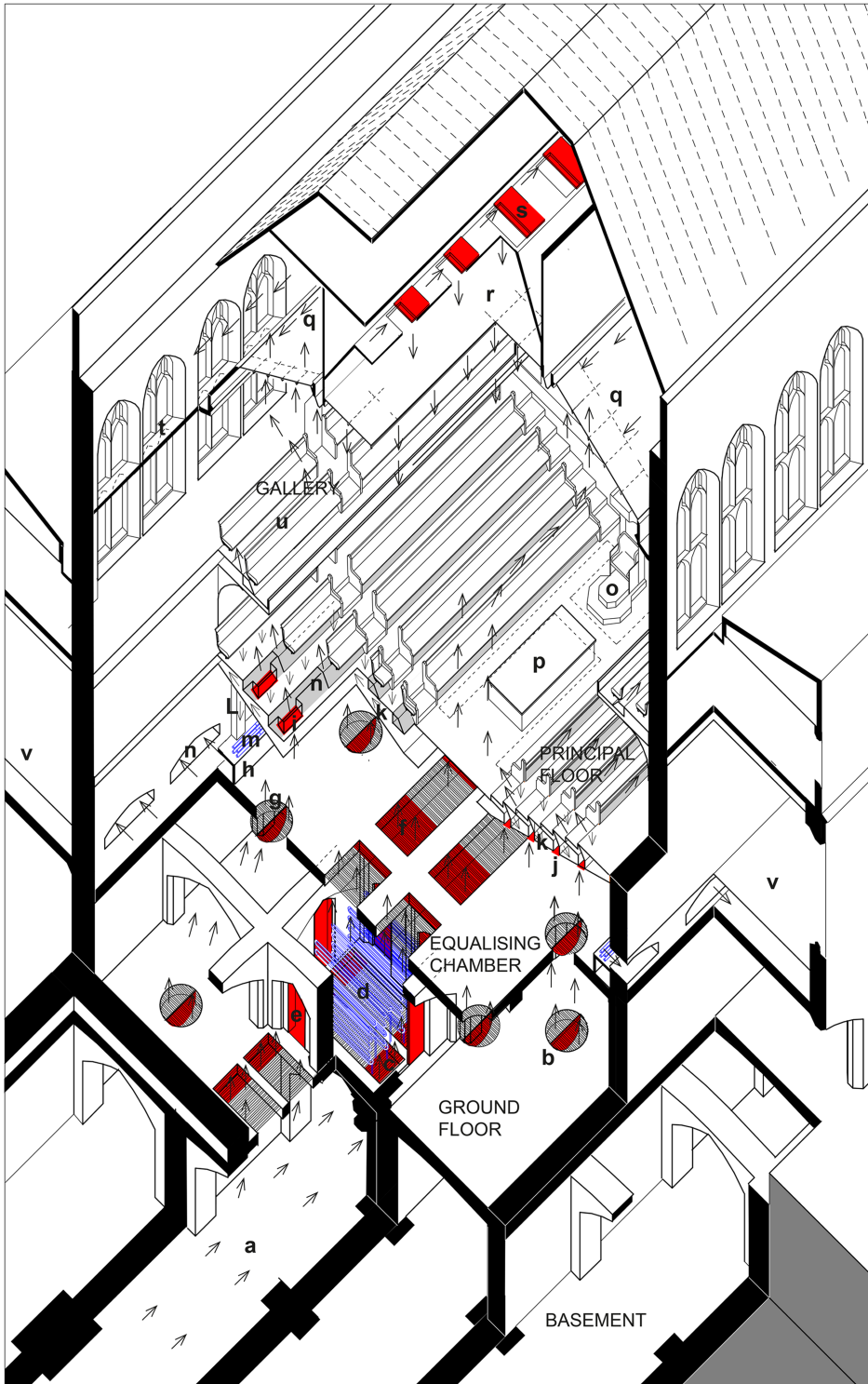


Fig 17. Axonometric projection of House of Commons debating chamber, showing the ventilation arrangement below the floor and above the ceiling. *Drawing*: author.

Key: a. fresh air passage linking inlets shafts to central air chamber; b. valves for conveying air from basement into cool air chamber (circular valves with shutters, shown in open position); c. valves for conveying air from basement to central heating chamber (rectangular valves with adjustable curtains below grating, shown partially opened); d. pipes of hot-water apparatus in heating chamber; e. vertical door valves for conveying hot air into cool air chamber; f. rectangular curtain valve through which heat air was admitted into equalising chamber; g. circular shutter valves to admit unheated air from cool air chamber into equalising chamber; h. horizontal duct in which vitiated air extracted through perforated floor was collected before it exhausted via the boiler in north-west turrets of Central Tower; i. sliding valves for supply of individual benches; j. sliding valves for supply through treads inside the gangways; k. Vitiated air chamber under perforated iron floor (extract); L. vertical ducts connecting vitiated air chamber with horizontal ducts; m. steam and hot-water pipes (heating and humidification); n. valves conveying air to fresh air chamber under the perforated floor of the division lobbies; o. Speaker's chair; p. table; q. vitiated air chamber above sloping side panels, extract of ceiling system; r. fresh air chamber used to supply tempered fresh air through central ceiling panels (ceiling system); s. sliding valves for regulating air supply to ceiling; t. line of acoustic ceiling retrofitted in 1851, covering half of Barry's original window; u. gallery with air supply through floor; v. division lobbies.

Some air was continuously extracted downwards through the floor immediately in front of the benches (fig 19).¹³⁴ This entered a vitiated air chamber below the floor and was discharged via the boiler chimney, which terminated in the turrets in the north-west corner of the Central Tower (fig 20).¹³⁵ Special provisions were made for enhancing the thermal comfort of front benchers, the Speaker and the Sergeant-at-Arms by warming their feet with hot-water plate radiators attached to the underside of the iron floor.¹³⁶

ENVIRONMENTAL MONITORING

Between February 1852 and April 1854, the environmental system was systematically monitored as part of the day-to-day operational procedures. Fulfilling a similar role to the digital sensors of modern building management systems, the monitoring data was collected to provide the human operators with feedback on the system's performance. Feedback was acquired through the recording of measurements, direct observations and by collecting personal responses from MPs (fig 21). Reid envisaged a system responsive to internal and external environmental conditions as well as the MPs' personal experience.

The monitoring followed the same principles as the monitoring regime tested inside the temporary House of Commons, and involved collecting subjective feedback alongside the recording of measurements. The attendants kept logbooks that contained registers for qualitative and quantitative data. These included columns for numerical data (temperature, humidity and air speed, number of MPs) and written notes referring to operational

134. Oral report by Reid on 26 Mar 1852 (Ev 50–4 Q346–62) in GB Parliament 1852a; oral report by Reid on 17 Jun 1844 (Ev 27–9, 35 Q317–28, Q387) in GB Parliament 1844c.

135. Reid 1847b [plans].

136. Reid 1850b [plans]; *Builder* 26 Jul 1851.

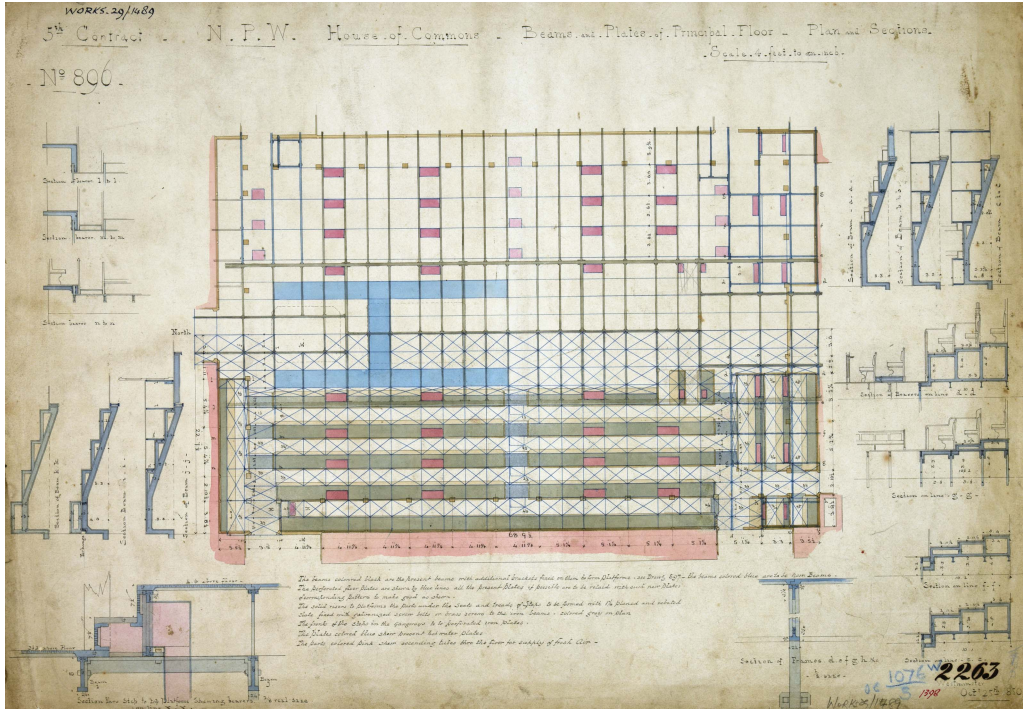


Fig 18. Plans forming part of original working drawings produced in Charles Barry’s office, showing the hot-water plates and supply ducts for individual benches, by C Barry, 25 October 1850, PRO: Work 29/1489. Photograph: © National Archives, Kew.

procedures and air quality, which was only monitored through direct observations – including detailed notes on how the supplies were switched in response to external air pollution. On 6 March 1854, for instance, attendants noted that the atmosphere was ‘very foggy and charged with smoke’ and that the supply was switched to central hall as ‘that from the Clock Tower very smoky’. These issues continued over two weeks and attendants wrote that switching the supply made the air ‘better but not good’. On one occasion, a ‘foggy atmosphere loaded with smoke of the neighbourhood penetrated the building’.

Within the debating chamber itself, only the air temperature was measured, using eight thermometers: four were fixed to the back wall of the galleries;¹³⁷ the other four were on the main floor, near the chairs of the Speaker and Sergeant-at-Arms and behind the benches on the opposition and government sides.¹³⁸ Inside the debating chamber, the messenger of the Sergeant-at-Arms recorded temperatures at hourly intervals and collected qualitative feedback from individual MPs.¹³⁹ Registers with the measured data were sent directly to the ventilator’s office, where it was transcribed into the central logbook and analysed. The MPs’ self-reported experience was carefully reviewed by the Sergeant-at-Arms, Lord Charles Russell, before the order was sent to the superintendent managing the attendants. Reid was the superintendent from February to November 1852, after which he was succeeded by the engineer Alfred

137. Oral report by Gurney on 26 Apr 1852 (Ev 403 Q3002–3) in GB Parliament 1852a.
138. Ibid, ‘Temperature at the House of Commons, taken by the messenger of the Sergeant-at-Arms, 22 March–4 May 1852’, 580–5.
139. Ibid, 545–8, oral report by Reid on 20 Apr 1852 (Ev 499–500 Q3597–8).

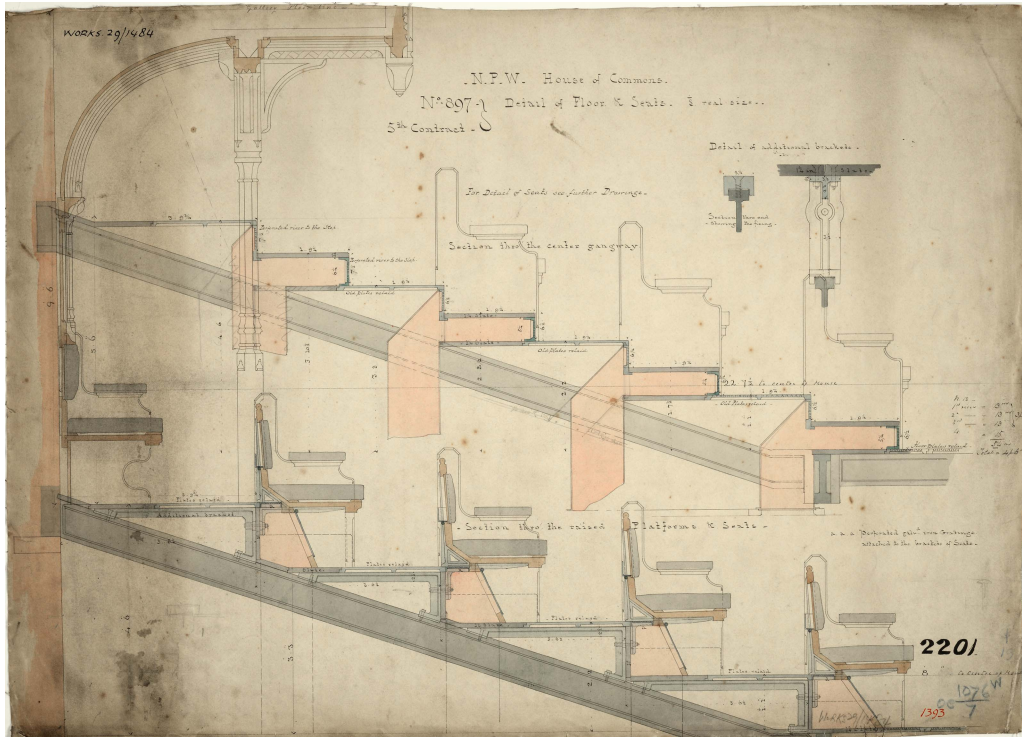


Fig 19. Construction details showing air supply within floor and benches, by Charles Barry, autumn 1850, PRO: Work 29/1484. Photograph: © National Archives, Kew.

Meeson. Russell reported that he was the ‘medium of communication, as respects the ventilation, between Dr. Reid and the Members’¹⁴⁰ and also highlighted that moderating the, often conflicting, response from individual MPs was a challenging process. References to orders and feedback can be found inside the logbooks.¹⁴¹ On 13 April 1853, for instance, attendants wrote that the ‘Speaker complained of draughts round his head’. On 31 March it was noted that the Speaker felt ‘too warm’ and on 7 April the Sergeant-at-Arms ‘wished the House a little cooler’. The level of environmental monitoring that Reid had envisaged was highly ambitious and the logbooks show that the attendants rarely collected enough data to fill an entire sheet. The quantity of recorded data varied significantly between days. This is not surprising as the monitoring was a labour-intensive procedure. Each reading was recorded individually by hand without the assistance of automatic recording devices. To gain a full set of temperatures alone, attendants had to take over fifty readings per hour, each of which had to be manually logged at different locations. Reid was clearly aware of this issue because he proposed introducing ropes and pulleys to operate dampers remotely, and speaking tubes and bells to improve communication between attendants and the ventilation office.¹⁴²

140. Oral report by Charles Russell on 26 Mar 1852 (Ev 40 Q255–6) in GB Parliament 1852a.

141. Office of Works 1853–1947 [parliamentary papers].

142. Anon 1852 [plans].

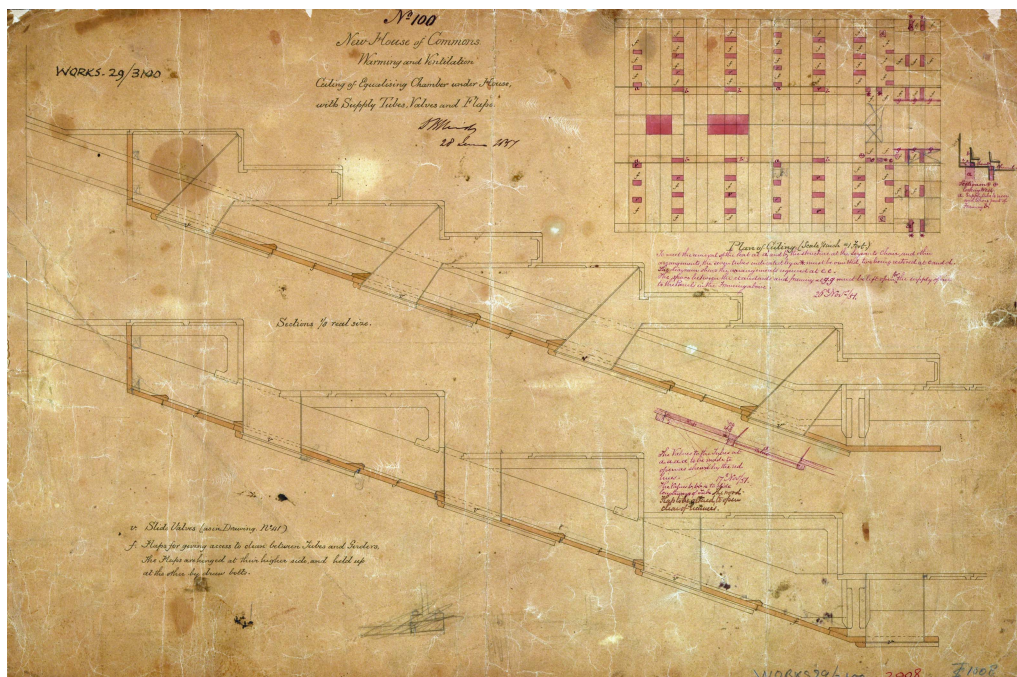


Fig 20. Drawings produced in Barry's office in June 1851, which includes notes and sketches that Reid had added on 17 and 26 November to refine details of sliding valves, by C Barry and D Reid, PRO: Work 29/3100. Photograph: © National Archives, Kew.

THE POST-OCCUPANCY HISTORY OF THE HOUSE OF COMMONS

'thermometer tells one tale, and the human body tells another'

John Leslie 1852¹⁴³

The previous sections have illustrated how the environmental principles adopted in the House of Commons reflected a deep concern about the MPs' perceived thermal comfort, but how effective were these principles in achieving Reid's objective? Between February 1852 and April 1854 (a period that could be described as the 'post-occupancy phase' in the history of Reid's system), meeting MPs' expectations became an unsurmountable challenge that drove the system to being decommissioned and replaced after only two years.

AN UNSUCCESSFUL FIRST TRIAL

On 3 February 1852 the new House of Commons was formally inaugurated, and the system went operational for the first time. It was a difficult first day for Reid and his team of

143. Oral report by Leslie on 27 Apr 1852 (Ev 423–30 Q3137–73) in GB Parliament 1852a.

HOUSE OF COMMONS REGISTER OF TEMPERATURES AND VENTILATION, &c.																																														
DATE AND HOUR	TEMPERATURE OF AIR CHAMBERS.					TEMPERATURE OF BODY OF HOUSE.								DIVISION CORRIDORS.								HYDRO-METER.		HOUSE MOISTURE.		AIR DISCHARGED AT.				EXTRACTING SHAP.		HEATING APPARATUS.										EXTERNAL.				REMARKS.
	Number in House.	Supply to Annexe.	Flat Chamber.	Hot the Flat.	Under House, &c. &c.	Supply to Office, &c. &c.	Bar.	Centre.	Chair.	Office.	St.	Flux.	Galley.	Flux.	Galley.	n. w.	e. s.	W. Temp.	E. Temp.	W. Temp.	E. Temp.	Bar.	Per Hour.	1	2	3	4	5	6	7	8	9	10	Wind.	Weather.	Dryness, &c. &c.	Bar. - metric.									
1853 April 8. 3.						82	82	82	81	81	82	81	81	81	81	81	81	81	81	81	81	81	81	81	81	81	81	81	81	81	81	81	81	81	81	81	81	81	81	81						
1.30						82	82	82	81	81	82	81	81	81	81	81	81	81	81	81	81	81	81	81	81	81	81	81	81	81	81	81	81	81	81	81	81	81	81	81	81					
4. 30	10.					82	82	82	81	81	82	81	81	81	81	81	81	81	81	81	81	81	81	81	81	81	81	81	81	81	81	81	81	81	81	81	81	81	81	81	81					
4. 40	10.					82	82	82	81	81	82	81	81	81	81	81	81	81	81	81	81	81	81	81	81	81	81	81	81	81	81	81	81	81	81	81	81	81	81	81	81	81				
5. 0	12					82	82	82	81	81	82	81	81	81	81	81	81	81	81	81	81	81	81	81	81	81	81	81	81	81	81	81	81	81	81	81	81	81	81	81	81	81				
5. 10	14					82	82	82	81	81	82	81	81	81	81	81	81	81	81	81	81	81	81	81	81	81	81	81	81	81	81	81	81	81	81	81	81	81	81	81	81	81				
6. 0	14					82	82	82	81	81	82	81	81	81	81	81	81	81	81	81	81	81	81	81	81	81	81	81	81	81	81	81	81	81	81	81	81	81	81	81	81	81				
6. 30	12					82	82	82	81	81	82	81	81	81	81	81	81	81	81	81	81	81	81	81	81	81	81	81	81	81	81	81	81	81	81	81	81	81	81	81	81	81				
7. 0	10					82	82	82	81	81	82	81	81	81	81	81	81	81	81	81	81	81	81	81	81	81	81	81	81	81	81	81	81	81	81	81	81	81	81	81	81	81				
7. 30	10					82	82	82	81	81	82	81	81	81	81	81	81	81	81	81	81	81	81	81	81	81	81	81	81	81	81	81	81	81	81	81	81	81	81	81	81	81				
8. 0	8					82	82	82	81	81	82	81	81	81	81	81	81	81	81	81	81	81	81	81	81	81	81	81	81	81	81	81	81	81	81	81	81	81	81	81	81	81				
8. 15	8					82	82	82	81	81	82	81	81	81	81	81	81	81	81	81	81	81	81	81	81	81	81	81	81	81	81	81	81	81	81	81	81	81	81	81	81	81				
9. 0	8.5					82	82	82	81	81	82	81	81	81	81	81	81	81	81	81	81	81	81	81	81	81	81	81	81	81	81	81	81	81	81	81	81	81	81	81	81	81				
9. 30	8.5					82	82	82	81	81	82	81	81	81	81	81	81	81	81	81	81	81	81	81	81	81	81	81	81	81	81	81	81	81	81	81	81	81	81	81	81	81				
10. 0	8.5					82	82	82	81	81	82	81	81	81	81	81	81	81	81	81	81	81	81	81	81	81	81	81	81	81	81	81	81	81	81	81	81	81	81	81	81	81				
10. 30	8.0					82	82	82	81	81	82	81	81	81	81	81	81	81	81	81	81	81	81	81	81	81	81	81	81	81	81	81	81	81	81	81	81	81	81	81	81	81				

Fig 21. Page from the original logbook used to record monitoring data, 8 April 1853, Parliamentary Archives, Office of Works 1853-1947 OOW/5. Photograph: © Parliamentary Archives.

Downloaded from https://www.cambridge.org/core. IP address: 129.12.46.206, on 29 Nov 2018 at 21:29:25, subject to the Cambridge Core terms of use, available at https://www.cambridge.org/core/terms. https://doi.org/10.1017/S00003851518000549

attendants. Failing to maintain comfortable indoor conditions, they received numerous complaints from MPs.

On the following day, the system became the subject of a debate, during which MPs described their experience. Joseph Hume, MP for Montrose Burghs, for instance, reported that he left the chamber as he could not bear the heat and asked for measures to ‘keep the place moderately cool’.¹⁴⁴ Captain Fitzroy mentioned that MPs were exposed ‘to puffs of alternate hot and cold air’. Ralph Bernal Osborne, MP for Middlesex, moved for Reid to be questioned at the bar of the House. Hume, the Sergeant-at-Arms, and Fitzroy argued that it was a complex problem that required a full technical inquiry under the direction of a Select Committee. The First Commissioner of Works, Lord Seymour, tried to calm the House by stressing that ‘the ventilation was not yet brought to full perfection, so that it could not be said to have had a fair trial’. On 6 February the House voted for a Select Committee and also invited Reid to give a verbal statement at the bar. He became very defensive, claiming that problems were caused by factors outside his control.¹⁴⁵

[D]oors were torn off in some passages leading to the House, from which gusts of air came into the house from every side. You might as well ask me to regulate the winds and currents of the Bay of Biscay, as expect me to ventilation the house if the doors and windows of the entrances leading to the house are not placed under my control.¹⁴⁶

On 7 February Reid submitted a memorandum to the Office of Works outlining the problems and proposals for remedial measures.¹⁴⁷ In this, and another letter from them (14 February),¹⁴⁸ it was argued that his system was not working effectively as the two supply fans could not be fully deployed. The fan for the floor level supply was operated only manually without the steam engine. It was removed after preliminary tests before the opening as its noise was disrupting debates.¹⁴⁹ The second fan could not be deployed as the downward supply through the ceiling was obstructed by the heat of the gas chandeliers.¹⁵⁰ On 3 February, the ceiling supply had had to be suspended after a brief trial as it carried hot air into the body of the House. The downward supply was only used during daytime debates, when artificial lighting was not required.¹⁵¹

Further complaints were made during the debate on 10 February. Apart from the atmosphere being too hot, MPs complained about ‘tremendous draughts of cold air’. In the galleries, the heat was particularly intense due to the chandeliers. These not only raised the air temperature in the upper part of the chamber, but also produced a strong radiant heat.¹⁵² On the next day, Osborne persuaded the House to consider Reid’s proposal for improvements, which included a new lighting system that was compatible with the downward supply. Reid was asked to produce detailed plans and estimates, to be reviewed by the Select Committee in March.¹⁵³ Being a major cause of discomfort, permission to improve the

144. *Daily News* 5 Feb 1852.

145. *Times* 9 Feb 1852.

146. *Builder* 14 Feb 1852.

147. Reid 1852a [letters]; *Hansard* HC Deb, vol 119 cols 231–423, 16 Feb 1852.

148. Commissioners of Works 1852a [letters].

149. Barry 1851 [letters]; Reid 1851 [letters]; *Hansard* HC Deb, vol 119 cols 400–16, 11 Feb 1852.

150. Reid 1852a [letters].

151. Oral report by Reid on 20 Apr 1852 (Ev 280 Q1996–7) in GB Parliament 1852a.

152. *Hansard* HC Deb, vol 119 cols 400–16, 11 Feb 1852.

153. Reid 1852b [letters].

lighting was granted to Reid straight away. Alterations to the lighting, however, were stopped by Barry, who insisted that the chandeliers, being an integral part of the architecture, should be retained.¹⁵⁴

MPs continued to voice their discontent with Reid's system and on 12 March the House voted for an independent technical study.¹⁵⁵ Lord Manners, who had succeeded Seymour as First Commissioner, recommended the Cornish surgeon and inventor Goldsworthy Gurney (1793–1875).¹⁵⁶ Gurney, who had advised the government on several issues, including lighthouse lighting, sewers and the ventilation of mines, was very familiar with the issue, and, as previously mentioned, had conducted empirical assessments of Reid's system in the temporary House of Commons, including enquiries into the better integration of artificial lighting.¹⁵⁷

Gurney, assisted by Denham Jephson-Norreys from the Select Committee, took initial spot measurements during the sitting on 19 March to examine the conditions inside the galleries. On the main floor, temperatures were as low as 61.5°F, but rose to 68°F on the gallery floor and 73°F above the seats. In addition, Jephson-Norreys reported that the chandeliers produced 'a burning sensation, such as if I were exposed to a red hot iron'.¹⁵⁸ Logbook entries from 22 March to 23 April 1852 show that temperatures in the galleries fluctuated between 63°F and 73°F (23°C) and were typically 2–6°F above those on the main floor (62–70°F) (fig 22).

In the light of modern standards, peak temperatures of 73°F (23°C) do not appear exceptionally high. It should be noted that the Victorian MPs wore heavy clothing and preferred lower temperatures.¹⁵⁹ Records of the set temperature for the permanent House could not be found, but in the temporary House of Commons attendants were required to maintain levels of 60–63°F in winter and prevent temperatures from exceeding 67°F in summer. Gurney referred to 64°F as the 'most satisfactory temperature'.¹⁶⁰ To fully understand the level of perceived discomfort, however, it is critical to consider other environmental factors affecting thermal comfort, such as radiant temperature, relative humidity or air movement, which were not routinely measured. Humidity was only regularly recorded from December 1853.¹⁶¹ The physicians Neil Arnott and John Leslie, who reviewed Reid's monitoring system, emphasised that the measuring of air temperature was insufficient to gain insights into the thermal sensations MPs were actually experiencing – in particular, the effect of air currents.¹⁶² As currents remained undetected, MPs felt uncomfortable even when the temperatures were within the recommended range.

154. Barry 1852a [letters]; Commissioners of Works 1852a, 1852b, 1852c [letters].

155. *Builder* 14 Feb 1852; *Daily News* 5 Feb 1852; *Hansard* HC Deb. vol 119 cols 162–72, 4 Feb 1852; *Hansard* HC Deb. vol 119 cols 400–16, 11 Feb 1852; *Hansard* HC Deb. vol 119 cols 231–423, 16 Feb 1852.

156. *Hansard* HC Deb. vol 119 cols 1147–50, 16 Mar 1852.

157. GB Parliament 1839, 1842.

158. Oral report by Denham Jephson-Norreys MP on 25 Mar 1852 (Ev 19–20 Q153–9) in GB Parliament 1852a.

159. Modern standards recommend temperatures of 20–23°C in winter and 22–26°C in summer (ASHRAE 2004), but if historic clothing levels are taken into consideration, these lower temperatures come very close to current standards. 19th-century paintings suggest that clothing levels were approximately 1.5 clo. According to the American Society of Heating, Refrigerating and Air-Conditioning Engineers (ASHRAE) Standard 55, at clothing levels of 1.5 clo, a temperature of 65°F is optimal for thermal comfort (Bradshaw 2006, 15–16).

160. Oral report by Gurney on 8 May 1854 (Ev 66 Q675) in GB Parliament 1854a.

161. Oral report by Gurney on 23 May 1854 (Ev 4 Q211) in GB Parliament 1854b.

162. Oral report by Leslie on 27 Apr 1852 (Ev 423–4 Q3137–43) in GB Parliament 1852a.

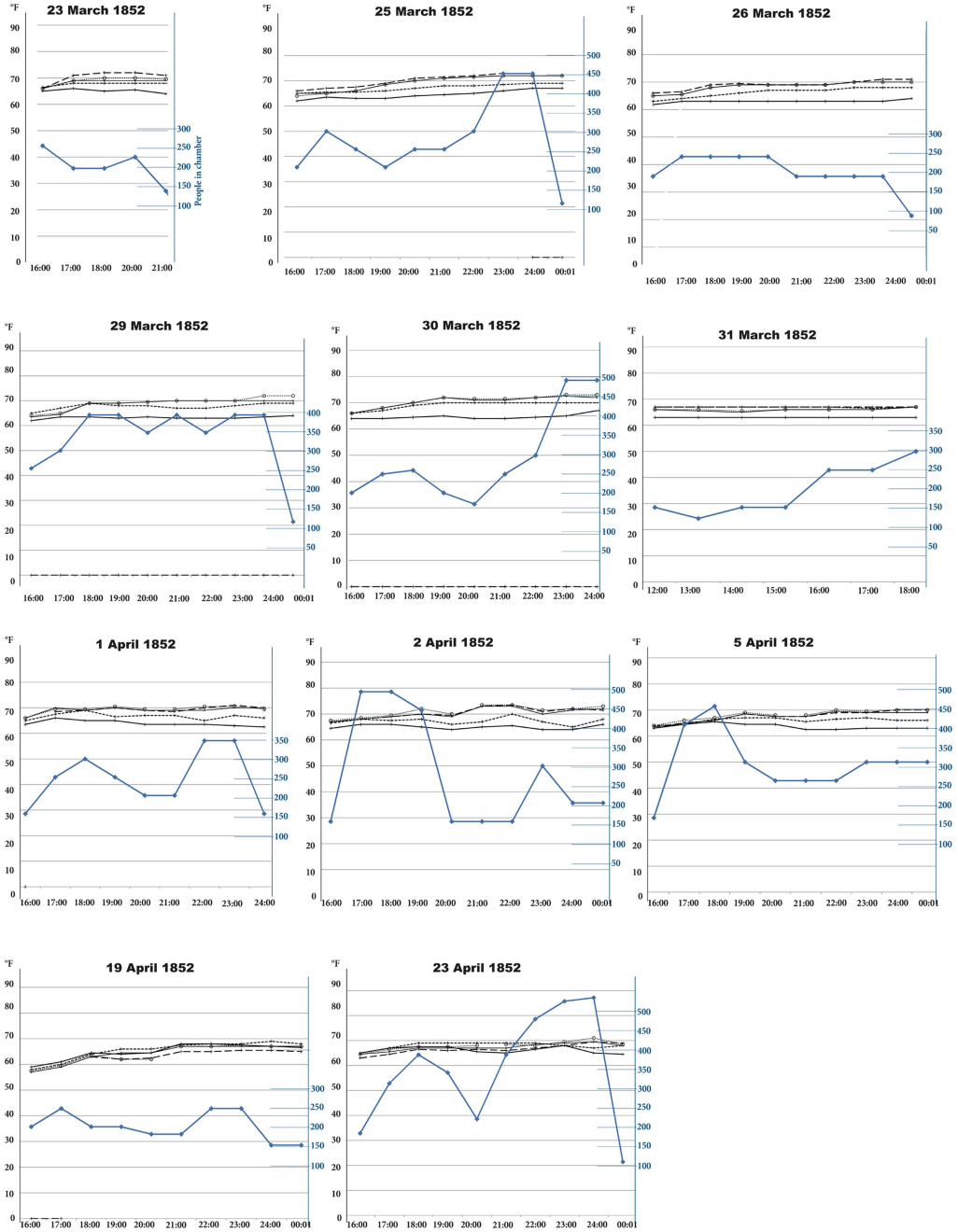


Fig 22. Graphs showing temperature and number of MPs recorded inside the debating chamber, 23 March–23 April 1852. *Drawing: author.*

THE FIRST INDEPENDENT EXAMINATION

Between March and April 1852, Reid's system underwent a detailed performance evaluation, coordinated by the Select Committee with the engineers Joseph Locke and Robert Stephenson as technical advisers. Interviews and two independent technical examinations were undertaken to gain a deeper understanding of the climate conditions and MPs' perceptions. One study was conducted by Gurney, the other by the architect Samuel Whitfield Daukes and the heating engineer Henry Cruger Price. The committee interviewed the Speaker, Sergeant-at-Arms and five MPs on the environmental factors affecting their experience. Thomas Thornton reported that temperatures were unsteady and that strong currents frequently swept over the galleries. In 'some parts of the evening', he noted, 'the temperature is very high, and others comparatively low'.¹⁶³ The Clerk of the House of Commons highlighted a problem with the air being too dry, causing MPs to 'cough, and considerable irritation in the chest and throat'.¹⁶⁴ The latter was also observed by the Sergeant-at-Arms and the Speaker, who reported a particularly severe instance on 24 March:

I sent once or twice to Dr. Reid to beg that he would make some change in the state of the air, for it was so dry that it caused an irritation in the throat, and I could hear the Members coughing all around.¹⁶⁵

The study by Daukes and Price confirmed that the climate was unstable and found that the ventilation rate was often insufficient, at times becoming excessive and resulting in uncomfortable currents. They claimed that it was caused by managerial problems. Daukes observed that cold and hot air entered the House as separate currents, creating an uneven temperature across the floor, and also that currents could suddenly change between hot and cold when valves were switched. Cold and hot air were not sufficiently mixed.¹⁶⁶ In their final report, Daukes and Price argued that Reid's control regime was impractical and recommended simplifications such as abandoning the practice of adjusting climates to the 'continual and conflicting wishes of individual members'.¹⁶⁷

Gurney came to similar conclusions. In his first report (6 April 1852), he wrote that the simultaneous extraction and supply of air through the floor and ceiling was difficult to coordinate.¹⁶⁸ He further examined this issue, with the assistance of the engineers James Mather, James Hann and John Hutchinson, through tests with differential barometers and anemometers. In his second report (published 13 April 1852), Gurney reported that the ventilation rate was insufficient to counteract overheating,¹⁶⁹ and that the atmospheric pressure inside the chamber was lower than outdoors, causing air to enter with great force when doors were opened. His diagnosis was that the quantity of vitiated air extracted through the up-cast shaft was not matched by the fan-driven supply. The fans were introduced by Reid with the intention of maintaining the balance artificially. Air was to be blown

163. *Ibid.*, oral report by Thornton on 25 Mar 1852 (Ev 4–6 Q28–9).

164. *Ibid.*, oral report by the Clerk of the House of Commons on 25 Mar 1852 (Ev 16–18 Q124–38).

165. *Ibid.*, oral report by the Speaker of the House of Commons on 26 Mar 1852 (Ev 45 Q316).

166. *Ibid.*, oral report by Daukes on 5 Apr 1852 (Ev 249 Q1729).

167. *Ibid.*, Daukes and Price's joint report, 564–8.

168. *Ibid.*, Gurney's first report on the ventilation of the new House of Commons on 6 Apr 1852, 586.

169. Gurney 1852, 252–71 [parliamentary papers].

in with ‘such a force that the air shall have equal pressure within and without’,¹⁷⁰ but Gurney claimed that the fan and stack were difficult to synchronise effectively. He proposed to adopt a purely stack-driven system in which fresh air was able to enter naturally, responding to the pull induced by the up-cast shaft.¹⁷¹ After these enquiries, the Select Committee authorised Reid to implement alterations outlined in his memorandum and overturned Barry’s earlier rejection of the new lighting system.

REID’S SYSTEM GETS ANOTHER TRIAL

The original lighting, which was designed by Barry and James Faraday¹⁷² to harmonise with the Gothic detailing, comprised six gas chandeliers hung around the horizontal section of ceiling (fig 23).¹⁷³ It was adopted after Barry had rejected a different lighting system that Reid designed in 1848 to be compatible with the ceiling supply.¹⁷⁴ Details showing how the lighting was to be integrated into the ceiling were submitted to the Office of Woods on 10 March 1848. Aiming to cast the whole chamber in a soft and uniform light, the entire ceiling was to be covered with 336 small lights (fig 24).¹⁷⁵ Conical light reflectors were to be inserted into the centre of each ceiling panel,¹⁷⁶ which also functioned as hoods through which the gas fumes could be extracted upwards. The cones terminated in flues connected to the up-cast shaft. Fresh air was supplied downwards through gaps around the edge of each ceiling panel, while the up-cast shaft ensured that fumes were instantly evacuated before they could contaminate or overheat the supply air.

These drawings were forwarded to Barry on 22 March 1848.¹⁷⁷ He, in several letters to the Office of Woods, opposed Reid’s involvement in the design of lighting and rejected his scheme for interfering with the architecture of the ceiling.¹⁷⁸ Instead, he advocated the use of self-ventilating gas chandeliers that James Faraday had developed for the House of Lords,¹⁷⁹ where fresh air was also supplied downwards through the ceiling.¹⁸⁰ For nine months, the issue was the subject of negotiations, but Barry persuaded the commissioners to adopt Faraday’s system.¹⁸¹ Reid wrote several highly emotional letters warning the commissioners that the lighting and ventilation should be designed as an integrated system.¹⁸²

The problems encountered in February 1852 show that these warnings were not unjustified, and Lord Seymour saw them as a manifestation of insufficient co-operation in the design.¹⁸³ Reid argued that it could be resolved by returning to his original plans, but the new lighting installed during the Easter recess of 1852 neither adhered to his original plans,

170. Oral report by Reid on 26 Jul 1842 (Ev 6 Q4–10) in GB Parliament 1842.

171. Oral report by Gurney on 1 Apr 1852 (Ev 130–1 Q821–8) in GB Parliament 1852a.

172. James Faraday was a gasfitter and son of Michael Faraday’s deceased brother, Robert.

173. *Illus London News* 7 Feb 1852.

174. Schoenefeldt 2016b.

175. Reid 1848a [letters].

176. Reid 1848a [plans].

177. Milne 1848 [letters].

178. Barry 1848a, 1848c [letters]; Reid 1848f [letters].

179. Reid 1848e [letters].

180. *Ibid.*

181. Commissioners of Woods 1848 [letters]; Commissioners for the Completion 1848 [letters].

182. Reid 1848d, 1848g [letters].

183. *Hansard* HC Deb. vol 119 cols 400–16, 11 Feb 1852.



Fig 23. Interior of the House of Commons with original gas chandeliers designed by Charles Barry and James Faraday, 1852, *Illustrated London News*, 7 February 1852.

Photograph: © Cambridge University Library.

nor facilitated the use of a downward supply through the central panels.¹⁸⁴ Instead, he reorganised the ceiling system. The fresh air chamber in the centre was converted into a vitiated air chamber and the supply was moved to the sloped side panels. The new vitiated air chamber was connected to the up-cast shaft, and gas lights were installed in sixteen of the sixty-four oak panels.¹⁸⁵ Prints in *Illustrated London News* show that it was composed of cone-shaped reflectors below which rings with open gas flames were suspended. Instead of being extracted through separate flues, gas fumes simply rose through the top of the reflectors into the vitiated air chamber.¹⁸⁶

184. Reid 1848a, 1848c [letters].

185. Oral report by Reid on 20 Apr 1852 (Ev 279–82 Q1991–2008) in GB Parliament 1852a.

186. *Illus London News* 24 Apr 1852; oral report by Gurney on 26 Apr 1852 (Ev 400 Q2980–2) in GB Parliament 1852a.

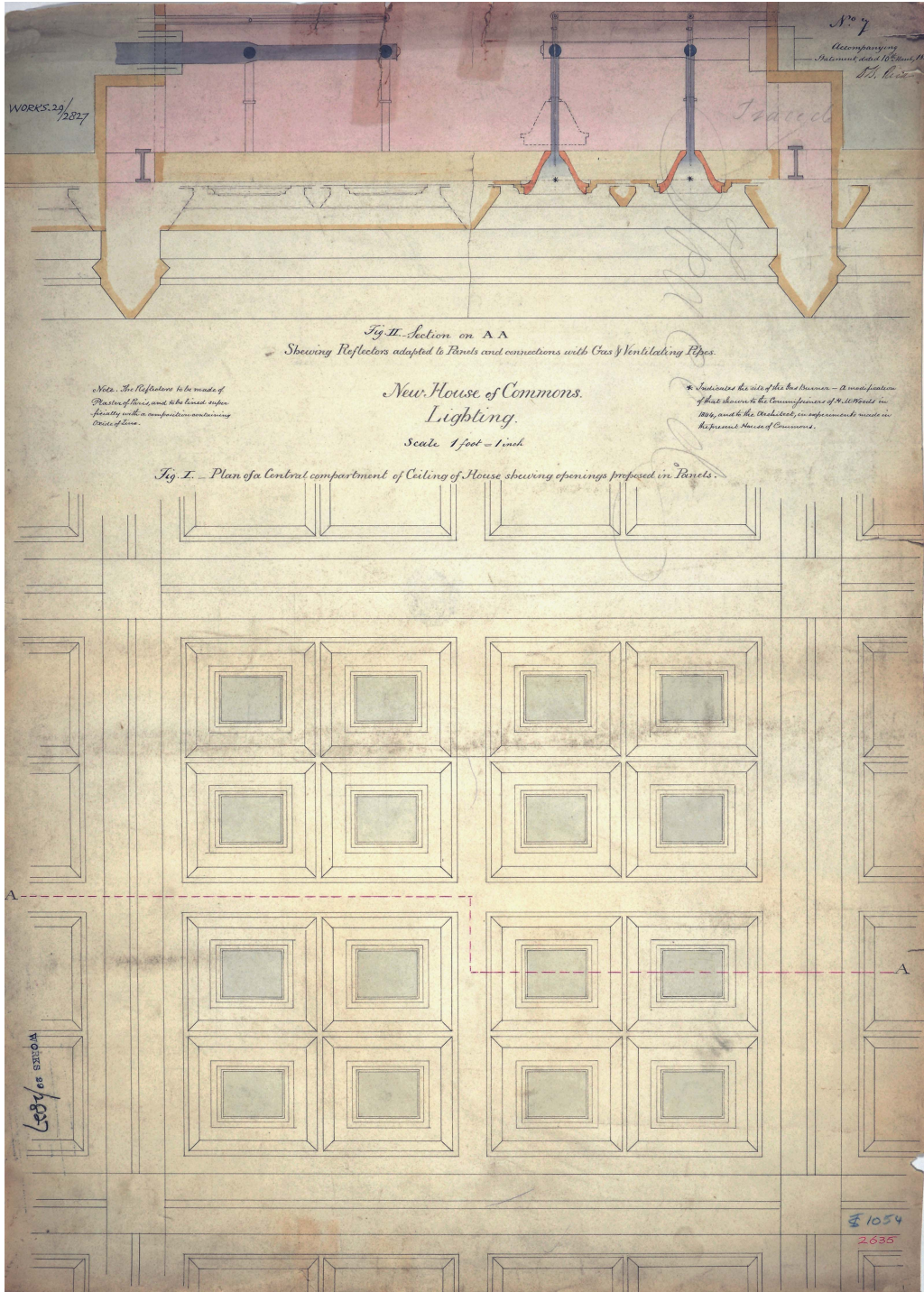


Fig 24. Detail showing Reid's scheme for integrating the gas lighting system into the panelled ceiling, by Reid, 10 March 1848. PRO: Work 29/2827. Photograph: © National Archives, Kew.

A first demonstration of the new arrangements was made during the sitting on 19 April.¹⁸⁷ Reid claimed that the modification reduced the temperature difference between the floor and gallery to 2°F, a claim that the data in the logbooks seem to confirm. The largest recorded difference was 3°F, compared to 11°F (5°C) before the alterations.¹⁸⁸ Temperatures were also consistently lower and more stable. The average daily temperature inside the gallery had fallen by 2°F and varied by no more than 4°F, compared to 7°F before the recess.

In another letter to the Office of Works (29 June 1852), Reid stressed that the ventilation had further improved after introducing a new steam engine for the fan driving the floor supply,¹⁸⁹ but he was still concerned with the state of the system. He wrote that important features were ‘executed promptly and in some cases in a merely temporary manner many arrangements that should now be put on a more systematic and permanent footing’. Reid received permission to improve the system in September, but was unable to complete the work before his contract had ended.¹⁹⁰ When the engineer Alfred Meeson took over his role as superintendent in November, it was still unfinished. Meeson reported that alterations had to be done under pressure of time to ensure that sittings could resume on 4 November 1852, which resulted in work being roughly executed.¹⁹¹ Reid was unable to complete his scheme, let alone optimise its performance, during the nine months that he was in charge of superintending day-to-day operations.

THE SYSTEM UNDER A NEW SUPERINTENDENT

Prompted by recommendations of the committee that the ventilation systems inside the palace should be placed under one, rather two, superintendents, Reid’s employment came under review. The ventilation in the House of Lords was supervised by Meeson, who had also worked as Clerk of Works in Barry’s office. In several letters, Barry warned Lord Manners that appointing Reid for this new post was a risk and that he was not prepared to tolerate his interference.¹⁹² Reid, in return, threatened Manners with legal action.¹⁹³ Manners discussed this issue with the Exchequer (Benjamin Disraeli) and Prime Minister Lord Derby, and consulted the engineers Stephenson and Locke. The engineers agreed that Reid, despite his expertise in the field of ventilation, was unsuitable due to his inability to co-operate with Barry.¹⁹⁴ Manners terminated his employment in October 1852,¹⁹⁵ and transferred responsibilities to Meeson.

Meeson undertook a first survey of Reid’s system in January 1853. In a report to the Office of Works, he warned that the system was in poor condition, preventing it from working effectively. The fan and heating of the ceiling supply was in disrepair, and critical

187. Oral report by Gurney on 26 Apr 1852 (Ev 288–92 Q2063–92) in GB Parliament 1852a.

188. Office of Works 1853–1947 [parliamentary papers].

189. Reid 1852c [letters].

190. Manners 1852 [letters]; Office of Works 1852 [letters]; Phipps 1852 [letters]; Reid 1852d [letters].

191. Meeson 1853a [letters].

192. Barry 1852b, 1852c [letters].

193. In 1853 Reid was paid £3,250 in compensation following arbitration: Gardiner 1853 [letters]; GB Government 1852b.

194. Locke and Stephenson 1852 [letters].

195. Commissioners of Works 1852d [letters].

features, such as the valves below the floor, were poorly executed or not completed,¹⁹⁶ causing air to rise through parts of the floor unchecked. Meeson also criticised the control procedures for being too complex, as attendants had to undertake large number of operations in different locations.¹⁹⁷ Meeson considered such operational aspects the main issue with Reid's system, highlighting that the temperature was difficult to regulate as the hot-water system could not be adjusted at the required speed to respond to the extreme fluctuation in the number of people. According to the logbooks, the number could change between fifty and 800 people during a single sitting, resulting in sudden changes in the internal heat-load. Temperature control was a major issue. The Speaker reported that Reid had difficulties managing the heat-load during crowded debates,¹⁹⁸ and the Sergeant-at-Arms observed that the temperature and air quality were highly susceptible to changes in attendance:

MPs suffered from very high temperatures, which Reid was unable to control; frequently, hour after hour, I have requested him, at the desire of the Members and in accordance with my own feelings, to lower the temperature; he appeared to be unable to do so; it sometimes increased rather than diminished during the progress of the evening.¹⁹⁹

Meeson also reported that Reid's lighting system had not resolved the overheating problems inside the galleries, and could only be counteracted through higher ventilation rates, which were neither required to maintain a good air quality nor desirable from the point of thermal comfort.

In March 1853 the 'Standing Committee Report' of the Standing Committee on the Ventilating and Lighting the House of Commons was commissioned to review Meeson's recommendations.²⁰⁰ It was chaired by the First Commissioner Sir William Molesworth and included Locke and Stephenson as technical consultants. Gurney, who had undertaken lighting experiments inside the temporary House of Commons, was commissioned to develop new lighting.²⁰¹ In his plans, presented to the Office of Works on 10 March,²⁰² the lights were moved into the vitiated air chamber above the ceiling and the wooden panels replaced with panes of painted glass.²⁰³ The fumes from each light were conveyed to the up-cast shaft through separate flues, protecting the firemen and attendants stationed inside the air chamber.²⁰⁴ The lights were tested in April 1853, and measurements taken by Gurney's assistants reveal that the heat-load was phenomenal, causing temperatures in the vitiated air chamber to reach 89°F (31°C) to 123°F (50°C).²⁰⁵ Meeson criticised the system, fearing that it could also affect temperatures inside the House.²⁰⁶ To dispel such fears, Gurney commissioned the engineers Thomas Mather and James Hann to take measurements

196. Meeson 1853b [letters].

197. Oral report by Meeson on 30 Mar 1854 (Ev 15 Q171–4) in GB Parliament 1854b.

198. Oral report by the Speaker of the House of Commons on 26 Mar 1852 (Ev 45–6 Q318–28) in GB Parliament 1852a.

199. *Ibid.*, oral report by the Sergeant-at-Arms on 26 Mar 1852 (Ev 40–2 Q257–69).

200. GB Parliament 1852–3, 1852c.

201. *Hansard* HC Deb. vol 129 cols 1297–318, 4 Aug 1853.

202. Meeson 1853c [letters].

203. Oral report given by Gurney on 12 Jun 1854 (Ev 95–6 Q931–9) in GB Parliament 1854a.

204. Meeson 1853c, 1853d, 1853e [letters].

205. Gurney 1853 [letters].

206. GB Parliament 1852c, Gurney's register of thermometer and pressure gauge, 8 Aug, 4.

within the debating chamber. Thermometers were hung below the glass panels, but no measurable increase could be detected, even when the lights were on for longer periods.²⁰⁷ Meeson remained sceptical. In his second report, he claimed that the lights caused the temperature in the galleries to rise to 74°F (23°C).²⁰⁸ To address this issue, he reactivated the air supply through the side panels, allowing cool air to be delivered directly into the galleries.²⁰⁹ During Meeson's administration, the ventilation also fell victim to the lack of commitment to Reid's original principles, but abandoned important features such as the intricate supply and extract arrangements within the floor. Large parts of the perforated floor, intended for the supply and extraction of air, was sealed to protect MPs from rising currents.²¹⁰

THE FINAL ASSESSMENT OF REID'S SYSTEM

After these changes, MPs continued to voice their dissatisfaction during debates between May 1853 and March 1854.²¹¹ John Bright, MP for Manchester, and Sir Denham Norreys complained about uneven temperatures across the House,²¹² which Richard Spooner, MP for North Warwickshire, described as 'scolding in one part, and freezing in another'.²¹³ There were also issues with dust being carried up by currents rising through the floor. These reportedly caused irritations in the eyes and lungs, making it difficult for MPs to speak without drinking water. Spooner instigated several debates and lobbied for adopting the Gurney's proposal from 1852. He was opposed by Molesworth, who argued that Meeson needed more time to get the system working optimally, yet after nine months of lobbying Spooner's initiative would ultimately lead to the decommissioning of Reid's system.²¹⁴ On 10 March 1853, Spooner made a successful motion for another Select Committee charged with identifying ways of improving the system.²¹⁵

As a member of the committee, Spooner continued to lobby for Gurney's system. The committee only reviewed Gurney's earlier proposal and commissioned Gurney to undertake another examination. Two weeks later, he presented a proposal that involved substantial remodelling of Reid's system.²¹⁶ On 31 March 1854, the Select Committee published a preliminary report advocating Gurney's scheme.²¹⁷ It claimed that Reid's system was 'condemned by common consent' as unsatisfactory, and recommended testing Gurney's scheme after the Easter recess. On 6 April, Gurney had a meeting with Molesworth to discuss his proposal and, the following day, submitted his report on the alterations that could be completed over the Easter recess. His system was only to be trialled and, in

207. *Ibid.*, Mather and Hann's report, 30 Jun, 2–3.

208. Oral report by Meeson on 30 Mar 1854 (Ev 12 Q127–34) in GB Parliament 1854c; Meeson 1853f [letters].

209. GB Parliament 1854b, Meeson's oral report on 30 Mar (Ev 12 Q127–34).

210. GB Parliament 1852–53, 1854b (oral report by Gurney, 30 Mar, Ev 3–5 Q 11–25).

211. *Hansard* HC Deb. vol 129, cols 1297–318, 4 Aug 1853; *Hansard* HC Deb. vol 124 cols 180–1, 17 Feb 1853; *Hansard* HC Deb. vol 127 cols 388–422, 19 May 1853.

212. *Daily News* 20 May 1853; *Times* 11 Mar 1854.

213. *Daily News* 1 Mar 1854.

214. *Daily News* 20 May 1853, 5 Aug 1853; *Morning Chronicle* 6 May 1853; *Times* 5 May 1853.

215. *Times* 11 Mar 1854.

216. GB Parliament 1854c, 2–3 (Gurney's report of 30 Mar).

217. *Ibid.*, iii–iv.

case it was unsuccessful, they were to revert to Reid's system.²¹⁸ In two other letters, Gurney stressed that more substantial modifications would be needed to implement his principles fully.²¹⁹ On 10 April, Spooner read the report to the House and moved for the adoption of Gurney's proposal,²²⁰ which was approved by vote.²²¹ Molesworth criticised the way the process was handled. He felt that Spooner was making the House decide before the committee had undertaken a full inquiry. Its recommendations were based solely on evidence given by Meeson and Gurney.²²²

GURNEY'S RIVAL SYSTEM

The alterations required to test Gurney's system were made between 14 and 26 April 1853 and its performance was reviewed by the House of Commons' Select Committee, and another committee appointed to review Barry's system in the House of Lords. Having received similar levels of disapproval as Reid's system, the Lords also considered adopting Gurney's alternative system should trials in the Commons be unsuccessful. MPs were interviewed before and after the alterations to determine how far Gurney's system had improved thermal comfort.

For the tests, the Clock Tower was converted into the main up-cast shaft, which was used to extract vitiated air through the centre of the main floor and the central ceiling panels. The vitiated air from the floor and ceiling was conveyed to the Clock Tower through the former fresh air passages in the basement. Reid's original up-cast shaft and roof level inlets were retained, but the floor level supply was re-modelled to allow fresh air to be driven into the House solely through the pull of the two stacks. Instead of introducing air through remote inlets and long passages, which required mechanical assistance, fresh air was admitted directly from the Star Chamber and Commons Courts.²²³

Gurney also replaced Reid's hot-water apparatus with a steam heating system to allow the temperature to be more rapidly adjusted in response to changes in attendance.²²⁴ Much care was taken in maintaining a narrower range of temperatures and more optimal humidity.²²⁵ Attendants were ordered to maintain temperatures between 63°F and 64°F (17°C–18°C).²²⁶ The internal currents were also monitored using down feathers that were attached to strings suspended across the chamber.²²⁷ The logbooks did not include measured data for this period, but interviews with MPs between May and July 1854 suggest that the climate had significantly improved. The Sergeant-at-Arms reported that the temperature was more tightly managed, draughts markedly reduced and the

218. Commissioners of Works 1854a [letters].

219. Gurney 1854a, 1854b [letters].

220. *Illus London News* 15 Apr 1854.

221. Commissioners of Works 1854b [letters].

222. *Daily News* 11 Apr 1854.

223. Gurney provided several oral accounts of his scheme in front of the two Select Committees: GB Parliament 1854b (30 Mar – Ev 1–12 Q1–126), 1854b (23 May – Ev 1–6 Q189–232), (21 Jul 1–4 Q233–73), 1854a (8 May – Ev 60–71 Q617–734).

224. GB Parliament 1854b, oral report by Gurney on 30 Mar 1854 (Ev 1–10 Q1–101).

225. GB Parliament 1854a, oral report by Gurney on 8 May 1854 (Ev 67 Q694).

226. GB Parliament 1854c, iii–iv.

227. *Ibid*, oral report by Gurney on 23 May 1854 (Ev 4 Q206–9); GB Parliament 1854a, oral report by Gurney on 8 May 1854 (Ev 61–66 Q618–81); *Times* 28 Apr 1854; *Morning Chronicle* 29 Apr 1854.

atmosphere felt fresh even after long debates.²²⁸ According to Robert Smith, MP for Northampton, the atmosphere was fresher and did not become oppressively hot.²²⁹ The MP for North Riding noted that draughts only occurred occasionally,²³⁰ and Edward Bouverie, MP for Kilmarnock Burghs, found that the attendants were able to adjust the temperature more quickly.²³¹ In its second report (26 May 1854), the Select Committee formally announced the end of Reid's system. It concluded that Gurney's interventions were successful in improving thermal comfort and recommended that the system be permanently adopted. It wrote that MPs perceived the atmosphere as 'sensibly sweeter, fresher and purer' and that the temperature was under tighter control.²³² The House of Lords was also re-modelled following Gurney's principles.²³³

CONCLUSION: THE RISE AND FALL OF REID'S LEGACY

This paper has retraced how Reid's masterplan for the ventilation of the Palace of Westminster evolved, and illuminated the role of empirical observations in addressing fundamental technical and human aspects of environmental design. Focusing on human aspects, these enquiries exemplified how Reid's medical background influenced his approach to environmental design in a way that was distinctive from the more technical focus of civil engineering of its day. MPs were directly involved in evaluating and refining the environmental systems from a thermal comfort perspective. This included inquiries into environmental monitoring regimes that were responsive not only to physical measurements, but also to the MPs' perceived comfort or air quality. These culminated in the highly sophisticated system of the permanent House of Commons.

Its design, however, cannot be understood through these scientific inquiries alone, as it was also influenced by the political context. Key features, such as the lighting system or air supply, were the outcome of intense negotiation and Reid's power struggle with the architect. Over the short period during which Reid was in charge of running the system, he was also unable to complete, let alone optimise, the design and operational procedures. Meeson, who succeeded Reid as superintendent, did not continue his efforts to realise the sophisticated strategy. When Gurney undertook the last test of Reid's system in 1854, most of the floor, which had been perforated for the supply and extraction of air, had been sealed. It was, therefore, never proven if Reid's strategy could have worked.

From 1852 to 1854, Reid's system was subject to continuous scrutiny from scientists, parliamentary committees and individual MPs. Evaluating its performance became a political process, not the least as the MPs were exceptionally powerful occupants who regularly voiced their discontent and demanded measures to improve thermal comfort. Reid, Meeson and Gurney were confronted with the challenge of devising a system that satisfied the MPs. The occupants' perception, rather than physical measurements, became the ultimate measure by which Reid's system was evaluated. Several scientific studies were conducted, which, similar to modern building performance evaluations, combined physical measurements and experiments with qualitative interviews that reviewed the occupants'

228. GB Parliament 1854a, eyewitness account of the Sergeant-at-Arms on 15 May (Ev 83–4 Q839–51).

229. Ibid, eyewitness account of Vernon Smith MP on 3 Jul (Ev 99–100 Q963–73).

230. Ibid, eyewitness account of Cayley MP on 3 Jul (Ev 100–3 Q973–94).

231. Ibid, eyewitness account of Bouverie MP on 12 May (Ev 73–6 Q753–9).

232. GB Parliament 1854c, iii–ix.

233. Gurney, Letter to Stone, 17 Jun 1854: GB Parliament 1854a, 118.

experience.²³⁴ Reid anticipated the concept of an intelligent system responsive to feedback gained through measurements and subjective responses from occupants. Historic records, however, suggest that it was too complex to be operated entirely manually without modern computerised controls, electronic sensors or actuators. Attendants had difficulties with collecting and processing large quantities of data at the required speed, and with operating the heating and ventilation. Environmental control was an elaborate manual procedure that relied on the skills and diligence of the attendants.

Reid's work at the Palace of Westminster features extensively in American and European technical literature, and had a strong influence on the nineteenth-century discourse within the field of heating and ventilation.²³⁵ Here, however, we have revealed that Reid's lasting contribution to the ventilation of the palace itself was limited and his legacy short-lived. His responsibility was confined to the House of Commons, accounting only for a small area of the palace. Working with other engineers, Barry developed most of ventilation in the palace. The numerous ventilation shafts on the roof, including the three Gothic turrets above the river front, were added by Barry, whose team retained and incorporated some features of Reid's work, such as the parts of central air supply served by the Victoria Tower. Although reduced in size and no longer serving as a central outlet, the Central Tower was initially retained as a local shaft for the House of Lords. After 1854, it became redundant when Gurney converted the Victoria Tower into the up-cast shaft instead. Taking a term from evolutionary biology, it could be understood as a vestigial of the palace's design evolution.

Failing to satisfy the MPs from a thermal comfort perspective, Reid's system was replaced with a new system. This was in continual use for ninety years, during which it underwent various technical refinements. Although Barry's system was also re-modelled following Gurney's approach, his ventilation turrets remained in use. Therefore, it could be argued that Gurney and Barry had a more lasting influence. The fact that only a few features of Reid's system survived beyond the 1850s might suggest that previous studies overemphasised the level of Reid's contribution. However, it could also mean that his legacy can only be fully understood if read as a contribution to a system that was continuously evolving, with various features being re-shaped by subsequent generations of scientists and engineers.

ABBREVIATIONS & BIBLIOGRAPHY

Abbreviations

Commissioners for Completion	Commissioners for the Completion of the New Palace of Westminster
Commissioners of Woods	Commissioners of Woods and Forests
HC	House of Commons
HL	House of Lords
HLRO	Parliamentary Archives (formerly House of Lords Record Office)
PED	Parliamentary Estate Directorate
PRO	The National Archives: Public Record Office

234. Leaman and Bordass 2001.

235. Bernan 1844, 39–44, 94–104; Tomlinson 1846, 182–212; Wyman 1846, 214–19; Richie 1862, 177–8, 190–1; Billing 1876, 11–29.

Bibliography

Parliamentary papers

- Barry, C 1845. 'Report as to the present stage of the works', 3 January, (HC 1845 100) HMSO
- GB Parliament 1835. House of Commons Select Committee on the Ventilation of the Houses of Parliament, 'Report of the Select Committee on the ventilation of the Houses of Parliament', (HC 1835 583) HMSO
- GB Parliament 1836a. Royal Commissioners Appointed to Consider the Plans for Building the new Houses of Parliament, 'Report of commissioners appointed to consider the plans for building the new Houses of Parliament', (HC 1836 66) HMSO
- GB Parliament 1836b. House of Commons Select Committee on Permanent Accommodation of Houses of Parliament, 'Report', (HC 1836 245) HMSO
- GB Parliament 1838. 'Letter from Doctor Reid to Lord Duncannon on ventilation of House of Commons', 28 March 1838, (HC 1837–38 277) HMSO
- GB Parliament 1839. House of Commons Select Committee to Superintend Experiment of Mr. Gurney to light House, 'Report, minutes of evidence, appendix, index', (HC 1839 501) HMSO
- GB Parliament 1841. House of Commons Select Committee on Ventilation of the New Houses of Parliament, 'Report from the Select Committee on ventilation of the new Houses of Parliament', (HC 1841 2–51) HMSO
- GB Parliament 1842. House of Commons Select Committee on Ventilation of the New Houses of Parliament, 'Report from the Select Committee on ventilation of the new Houses of Parliament', (HC 1842 536) HMSO
- GB Parliament 1843. House of Commons Select Committee on Smoke Prevention, 'Report from the Select Committee on smoke prevention', (HC 1843 583) HMSO
- GB Parliament 1844a. Royal Commissioners for Inquiring into the State of Large Towns and Populous Districts, *First Report No. 572*, HMSO, London
- GB Parliament 1844b. House of Lords Select Committee on Progress of Building of Houses of Parliament, 'Second report', (HL 1844 629) HMSO
- GB Parliament 1844c. House of Commons Select Committee on State of Building of Houses of Parliament, 'Report, minutes of evidence', (HC 1844 448) HMSO
- GB Parliament 1846a. House of Lords Select Committee Appointed to Inquire into the Progress of the Building of the Houses of Parliament, 'Reports from the Select Committee of the House of Lords appointed to inquire into the progress of the building of the Houses of Parliament, session 1846', (HL 1846 719) HMSO
- GB Parliament 1846b. House of Commons, 'Report upon the system proposed by Dr D B Reid for warming and ventilating the new Houses of Parliament, session 1846', (HC 1846 447) HMSO
- GB Parliament 1846c. House of Commons, 'Dr Reid's reply to the report of the referees appointed to consider the warming and ventilating arrangements for the new Houses of Parliament, session 1846', (HC 1846 555) HMSO
- GB Parliament 1846d. House of Commons Select Committee on Westminster Bridge and New Palace, 'First report, session 1846', (HC 1846 177) HMSO
- GB Parliament 1846e. House of Commons Select Committee on Westminster Bridge and New Palace, 'Second report', (HC 1846 349) HMSO
- GB Parliament 1846f. House of Commons Select Committee on Westminster Bridge and New Palace, 'Third report', (HC 1846 574) HMSO
- GB Parliament 1852a. House of Commons Select Committee on Ventilation and Lighting of the House, 'Second report', (HC 1852 402) HMSO
- GB Parliament 1852b. 'Copies of the submission to arbitration between Her Majesty's government and Dr Reid', (HC 1852–53 498) HMSO
- GB Parliament 1852c. 'Copy of the report of Mr Goldsworthy Gurney to the Commissioners of Works, respecting the lighting of the House of Commons', (HC 1852–53 911) HMSO
- GB Parliament 1852–3. 'Report of the Standing Committee on the ventilating and lighting the House of Commons', (SC HC 1852–53 570) HMSO

- GB Parliament 1854a. House of Lords Select Committee Appointed to Inquire into the Possibility of Improving the Ventilation and Lighting of the House, 'First report', (HL 1854 384) HMSO
- GB Parliament 1854b. House of Commons Select Committee on the Ventilation of the House of Commons, 'First report', (HC 1854 149) HMSO
- GB Parliament 1854c. House of Commons Select Committee on the Ventilation of the House of Commons, 'Second report, minutes of evidence', (HC 1854 270) HMSO
- GB Parliament 1943–44. House of Commons Select Committee on House of Commons Rebuilding, 'Report from the Select Committee on House of Commons rebuilding', (HC 1943–44 109) HMSO
- Gurney, G 1852. 'Second report on the ventilation of the new House of Commons', (HC 1852 252–371) HMSO
- Office of Works 1853–1947. 'Registers of temperature control and ventilation for the House of Commons 1853–4', Parliamentary Archives: OOW/5
- Reid, D B 1845. Second Report on the State of Newcastle-upon-Tyne and Other Towns in the Northern Coal-mine Districts, HMSO, London
- Barry, C 1850. 'Plan of central hall showing pipe runs', 5 January 1850, PRO: Work 29/2927
- Barry, C 1851a. 'Plan of principal floor', 10 January 1851, PRO: Work 29/3090
- Barry, C 1851b. 'Section through gangway and seats', 10 January 1851, PRO: Work 29/3093
- Barry, C 1851c. 'Ceiling above equalizing chamber with supply tubes, valves and flaps', 28 June 1851, PRO: Work 29/3100
- Barry, C 1852. 'Plan of basement and ground floor of Victoria Tower to Central Tower showing air channels', 14 October 1852, PRO: Work 29/2969
- Faber, O and Scott, G G 1944. 'Ventilation and air conditioning scheme', July 1944, HLRO: ARC/PRO/WORK 11/425
- Lord Campbell 1843. 'Report', 11 September 1843, PRO: Work 11/16, 88
- Reid, D B 1844a. 'Plan and elevation of wall under gallery at south end of House under principal floor line, showing provision for ventilation', 4 March 1844, PRO: Work 29/2863
- Reid, D B 1844b. 'Plan and elevation of risers in east and west wall', 19 February 1844, PRO: Work 29/2864
- Reid, D B 1845a. 'House of Lords: plan above the ceiling showing provision for ventilation', 1845, PRO: Work 29/2888
- Reid, D B 1845b. 'Longitudinal section of House of Commons and adjoining parts, showing ventilation', 11 October 1845, PRO: Work 29/2891
- Reid, D B 1845c. 'House of Commons plan and section showing ventilation at north end', 11 October 1845, PRO: Work 29/2892
- Reid, D B 1845d. 'Plan and sections of ceiling showing arrangement of chambers for ventilation', 16 July 1845, PRO: Work 29/2897
- Reid, D B 1845e. 'Section through Royal Gallery looking south showing ventilation flues', 1845, PRO: Work 29/2883
- Reid, D B 1845f. 'Plan of principal floor', 1845, PRO: Work 29/2894
- Reid, D B 1846. 'House of Lords: plan and section of air chambers over ceiling', 10 July 1846, PRO: Work 29/2896
- Reid, D B 1847a. 'Longitudinal section', 5 April 1847, PRO: Work 29/2905
- Reid, D B 1847b. 'Plan of basement', 5 April 1847, PRO: Work 29/3007
- Reid, D B 1847c. 'Plan of ground floor', 5 April 1847, PRO: Work 29/3008
- Reid, D B 1847d. 'Plan of equalizing chamber', 5 April 1847, PRO: Work 29/3014

Plans and sketches

- Anon n.d.(a). 'Longitudinal section through House and Commons lobby looking west', PRO: Work 29/2993
- Anon n.d.(b). 'Cross section through House and divisional lobbies looking south', PRO: Work 29/2994
- Anon 1843a. 'Plan of central hall including Peers' inner court and Commons' inner court, ground floor', 27 March 1843, PRO: Work 29/101
- Anon 1843b. 'Plans and sections of south-west corner of House, showing provision for ventilation', 19 March 1843, PRO: Work 29/2856
- Anon 1852. 'Annotated drawing dated 6 November 1852 of Reid's "Plans of offices for ventilation"', 22 September 1851, PRO: Work 29/3106
- Barry, C 1849. 'Basement plan of central eastern portion showing warming and ventilating ducts', 20 October 1849, PRO: Work 29/2923

- Reid, D B 1847e. 'Plans and sections of principal heating apparatus', 5 April 1847, PRO: Work 29/3026
- Reid, D B 1847f. 'Plan of roof', 5 April 1847, PRO: Work 29/3027
- Reid, D B 1847g. 'Plans and section of ventilating system of House of Lords to form basis of the proposed arrangement for House of Commons', 5 April 1847, PRO: Work 29/3035
- Reid, D B 1847h. 'Detail of air valves', 5 April 1847, PRO: Work 29/3041-3
- Reid, D B 1847i. 'Drawing of auxiliary heating and ventilating apparatus in air channel between House lobby and Central Tower', 5 April 1847, PRO: Work 29/3046
- Reid, D B 1847j. 'Tracing of a sketch plan made in Dr Reid's office showing ventilation shaft in Central Tower', 15 June 1847, PRO: Work 29/3049
- Reid, D B 1847k. 'Section of Central Tower illustrating discharge of vitiated air and one of the sources of supply of fresh air', 31 May 1847, PRO: Work 29/3051
- Reid, D B 1847l. 'Section through Central Tower showing various ventilating designs', 15 June 1847, PRO: Work 29/3052
- Reid, D B 1847m. 'Plans and sections showing valves at top of vitiated air shaft', 19 July 1847, PRO: Work 29/3054
- Reid, D B 1848a. 'Nine drawings outlining lighting scheme', 10 March 1848, PRO: Work 29/2820-8
- Reid, D B 1848b. 'Plan and cross-section of roof inlet', June 1848, PRO: Work 9/2910
- Reid, D B 1848c. 'Plan, elevations and sections of vitiated air shaft', 24 February 1848, PRO: Work 29/2916
- Reid, D B 1848d. 'Plan and section of central chamber', 26 April 1848, PRO: Work 29/3063
- Reid, D B 1848e. 'Drawing showing modification proposed for the supply of fresh air', 7 June 1848, PRO: Work 29/3066
- Reid, D B 1848f. 'Section through roof over St Stephen's Hall showing construction and arrangement of smoke and air flues', 29 June 1848, PRO: Work 29/3067
- Reid, D B 1850a. 'Details of new apparatus in air chamber in the roof over Commons' corridor', 22 January 1850, PRO: Work 29/3083
- Reid, D B 1850b. 'Details of underfloor plate radiator', 22 January 1850, PRO: Work 29/3081-9
- Reid, D B 1851a. 'Plan and section over the groins of St Stephen's Hall and St Stephen's

Porch showing flues and air channels in roof', 27 December 1851, PRO: Work 29/2960

- Reid, D B 1851b. 'Cross-section', 10 January 1851, PRO: Work 29/3094

Letters

- Barry, C 1839. 'Letter to D Reid', 22 October 1839, PRO: Work 11/12, 15
- Barry, C 1845a. 'Letter to D Reid', 10 May 1845, Work 11/12, 140
- Barry, C 1845b. 'Letter to D Reid', 15 April 1845, PRO: Work 11/12, 124
- Barry, C 1845c. 'Letter to D Reid', 7 May 1845, PRO: Work 11/12, 138
- Barry, C 1848a. 'Letter to A Milne', 22 March 1848, PRO: Work 11/13, 409
- Barry, C 1848b. 'Letter to Commissioners for Completion', 6 July 1848, PRO: Work 11/13, 464
- Barry, C 1848c. 'Letter to H Cole', 26 October 1848, PRO: Work 11/13, 518
- Barry, C 1849. 'Letter to H Cole', 5 March 1849, PRO: Work 11/13, 551
- Barry, C 1851. 'Letter to Commissioners for Completion', 3 July 1851, PRO: Work 11/14, 643
- Barry, C 1852a. 'Letters to Commissioners of Works', 20 February 1852, PRO: Work 11/14, 704-5
- Barry, C 1852b. 'Letter to J Manners', 17 June 1852, PRO: Work 11/14, 733
- Barry, C 1852c. 'Letter to J Manners', 30 June 1852, PRO: Work 11/14, 737
- Commissioners for the Completion 1848. 'Resolution of Commissioners for the Completion of the Palace', 30 October 1848, PRO: Work 11/13, 521
- Commissioners for the Completion 1849. 'Letter to the Treasury', 10 March 1849, PRO: Work 11/13, 550
- Commissioners of Woods 1848. 'Letter to D Reid', 18 November 1848, PRO: Work 11/13, 535
- Commissioners of Works 1851. 'Letter to D Reid', 19 December 1851, PRO: Work 11/14, 672
- Commissioners of Works 1852a. 'Letter to C Barry', 14 February 1852, PRO: Work 11/14, 679
- Commissioners of Works 1852b. 'Letter to D Reid', 16 February 1852, PRO: Work 11/14, 701
- Commissioners of Works 1852c. 'Letter to M Faraday', 21 February 1852, PRO: Work 11/14, 702

- Commissioners of Works 1852d. 'Letter to D Reid', 21 September 1852, PRO: Work 11/16, 81
- Commissioners of Works 1854a. 'Letter to G Gurney', 7 April 1854, PRO: Work 11/14, 850
- Commissioners of Works 1854b. 'Letter to G Gurney', 12 April 1854, PRO: Work 11/14, 854
- Gardiner, J 1853. 'Letter to J Phipps', 9 May 1853, PRO: Work 11/16, 140
- Gore, C 1841. 'Letter to C Barry', 27 July 1841, PRO: Work 11/12, 68
- Gurney, G 1853. 'Letter to Commissioners of Works', 12 March 1853, PRO: Work 11/14, 784
- Gurney, G 1854a. 'Letter to Commissioners of Works', 7 April 1854, PRO: Work 11/14, 842
- Gurney, G 1854b. 'Letter to Commissioners of Works', 10 April 1854, PRO: Work 11/14, 847
- Locke, J and Stephenson, R 1852. 'Report to Commissioners of Works', 3 August 1852, PRO: Work 11/16, 73
- Manners, J 1852. 'Letter to D Reid', 9 September 1852, PRO: Work 11/16 nr. 747
- Meeson, A 1853a. 'First report on the state of the warming, and ventilation and lighting of the Houses of Parliament', 8 January 1853 PRO: Work 11/14, 768–81
- Meeson, A 1853b. 'Letter to Commissioner of Works', 8 January 1853, PRO: Works 11/14, 767
- Meeson, A 1853c. 'Letter to Commissioner of Works', 11 March 1853, PRO: Work 11/14, 829
- Meeson, A 1853d. 'Letter to Commissioner of Works', 14 March 1853, PRO: Work 11/14, 786
- Meeson, A 1853e. 'Letter to Commissioner of Works', 18 April 1853, PRO: Work 11/14, 788
- Meeson, A 1853f. 'Second report on the warming, ventilating and lighting arrangements', August 1853, PRO: Work 11/14, 791–812
- Milne, A 1840. 'Letter to D Reid', 24 January 1840, PRO: Work 11/12, 30–2
- Milne, A 1848. 'Letter to D Reid', 22 March 1848, Work 11/13, 410
- Office of Works 1852. 'Letter to the Chancellor of the Exchequer, Lord John Manners and Earl of Derby', 22 July 1852, PRO: Work 11/16, 68
- Phipps, J 1852. 'Notes on the ventilation work still to be completed', 3 September 1852, PRO: Work 11/14, 744–6
- Reid, D B n.d. 'Letter to Lord Duncannon', PRO: Work 11/12, 17
- Reid, D B 1839a. 'Letter to Department of Woods and Forests', 7 November 1839, PRO: Work 11/12, 19
- Reid, D B 1839b. 'Letter to Department of Woods and Forests', 1 December 1839, PRO: Work 11/12, 24
- Reid, D B 1840. 'Letter to Viscount Duncannon', 7 July 1840, PRO: Work 11/12, 34
- Reid, D B 1841. 'Letter to Department of Woods and Forests', 28 April 1841, PRO: Work 11/12, 45
- Reid, D B 1845a. 'Letter to Commissioners of Woods', 10 February 1845, PRO: Work 11/12, 147
- Reid, D B 1845b. 'Letter to C Barry', 9 May 1845, PRO: Work 11/12, 139–40
- Reid, D B 1845c. 'Letter to C Barry', 7 May 1845, PRO: Work 11/12, unnumbered
- Reid, D B 1845d. 'Letter to C Barry', 12 May 1845, PRO: Work 11/12, 141
- Reid, D B 1845e. 'Letter to Commissioners of Woods', 12 May 1845, PRO: Work 11/12, 142
- Reid, D B 1845f. 'Letter to Commissioners of Woods', 20 May 1845, PRO: Work 11/12, 152
- Reid, D B 1846. 'Sketches enclosed in letter to Lord Morpeth', 14 December 1846, PRO: Work 29/300
- Reid, D B 1847. 'Letter to the Commissioners of Woods', 19 July 1847, PRO: Work 29/3053
- Reid, D B 1848a. 'Statement accompanying Dr Reid's letter to the Commissioners of Woods', 10 March 1848, PRO: Work 11/13, 387
- Reid, D B 1848c. 'Letter to Commissioners of Woods', 10 March 1848, PRO: Work 11/13, 391
- Reid, D B 1848d. 'Letter to H Cole', 26 April 1848, PRO: Work 11/13, 441–2
- Reid, D B 1848e. 'Letter to Commissioners for Completion', 23 July 1848, Work 11/13, 485
- Reid, D B 1848f. 'Letter to Commissioners for Completion', 28 October 1848, PRO: Work, 11/13, 519–20
- Reid, D B 1848g. 'Letter to Commissioners for Completion', 10 November 1848, PRO: Work 11/13, 527
- Reid, D B 1849. 'Petition to the House of Commons', 23 February 1849, PRO: Work 11/16, 14
- Reid, D B 1851. 'Letter to Department of Woods', 3 December 1851, PRO: Work 11/16, 61

- Reid, D B 1852a. 'Memorandum', 7 February 1852, PRO: Work 11/14, 678
- Reid, D B 1852b. 'Report of measures required for the health and comfort of the House of Commons', 10 March 1852, PRO: Work 11/14, 711–14
- Reid, D B 1852c. 'Supplementary report', 29 June 1852, PRO: Work 11/14, 735
- Reid, D B 1852d. 'Letter to J Manners', 27 August 1852, PRO: Work 11/14, 741
- Treasury 1849. 'Letter to Commissioners for Completion', 28 March 1849, Work 11/13, 558
- ### Books and journal articles
- Ackerman, M 2010. *Cool Comfort: America's romance with air-conditioning*, Smithsonian Institution, Washington
- ASHRAE, 2004. *Handbook: Heating, ventilating and air-conditioning systems and equipment*, ASHRAE, Atlanta
- Banham, R 1984. *The Architecture of the Well-Tempered Environment*, Chicago University Press, Chicago
- Bernan, W 1844. *On the History and Art of Warming and Ventilating*, George Bell, London
- Billing, J 1876. *The Principles of Ventilating and Heating and Their Practical Application*, Engineering and Building Record, New York
- Bradshaw, V 2006. *The Building Environment: active and passive control systems*, Wiley, Hoboken
- Brucemann, R and Prowler, D 1977. '19th century mechanical system designs', *J Architect Edu*, **30**, 11–5
- Bruegmann, R 1978. 'Central heating and forced ventilation: origins and effects on architectural design', *J Soc Architect Histor*, **37**, 143–60
- Builder*, 26 July 1851, 'The new Houses of Commons', 460–1
- Builder*, 14 February 1852, 'Editorial', 97
- Builder*, 21 February 1852, 'The ventilation of the House of Commons', 117
- Builder*, 5 May 1855, 'The revision of architecture in connection with the useful arts', 208–9
- Caledonian Mercury*, 28 July 1836, 'Philosophical Society', 3
- Cannadine, D 2000. *The Houses of Parliament: history, art, architecture*, Merrell, London
- Carter, J 1981. 'Vitiated air: a Victorian villain?', *J Roy Soc Med*, **74**, 914–19.
- Civil Engineer and Architect's Journal*, September 1852, 'Dr Reid's arrangement for warming and ventilating the new Houses of Commons', 292–3
- Cocks, B 1977. *Mid-Victorian Masterpiece*, Book Club Associates, London
- Collins, P 1998. *Changing Ideals in Modern Architecture, 1750–1950*, McGill-Queens University Press, Quebec
- Daily News*, 5 February 1852, 'Imperial Parliament', 3
- Daily News*, 20 May 1853, 'Imperial Parliament', 3
- Daily News*, 5 August 1853, 'Imperial Parliament', 4
- Daily News*, 1 March 1854, 'Ventilation of the House', 2
- Daily News*, 11 April 1854, 'Ventilation of the House', 3
- Fechner, G 1860. *Elemente der Psychophysik*, Breitkopf & Härtel, Leipzig
- Gleich, M 2012. 'Architect and service architect: the quarrel between Charles Barry and David Boswell Reid', *Interdiscip Sci Rev*, **37**, 332–44
- Hawkes, D 2012. *Architecture and Climate*, Routledge, London
- Hiles, T 1893. *The Ice Crop: how to harvest, store, ship and use ice*, Orange Judd Company, New York
- Hill, R 2007. *God's Architect: Pugin and the building of romantic Britain*, Allen Lane, London
- Hitchcock, Henry-Russell 1954. *Early Victorian Architecture in Britain*, Yale University Press, New Haven
- Illustrated London News*, 7 February 1852, 'The new House of Commons from the bar', 121
- Illustrated London News*, 15 April 1854, 'Imperial Parliament', 342
- Illustrated London News*, 24 April 1852, 'Dr Reid's system of lighting the House of Commons', 317
- Kistler, L, Carter, C and Hinchey, B 1984. 'Planning and control in the 19th century ice trade', *Account Historian J*, **11**, 19–30
- Leaman, A and Bordass, B 2001. 'Assessing building performance in use: the Probe occupant surveys and their implications', *Build Res Infor*, **29**, 129–43
- Lerum, V 2016. *Sustainable Building Design: learning from nineteenth-century innovations*, Routledge, London
- Lomas, K, Cook, M and Short, C 2009. 'Commissioning hybrid advanced naturally

- ventilated buildings: a US case study research', *Build Res Infor*, **37**, 397
- Morning Chronicle*, 6 May 1853, 'Lighting and ventilation of the House', 2
- Morning Chronicle*, 29 April 1854, 'The new House of Commons', 5
- Mumfort, L 1938. *Culture of Cities*, Harcourt, Brace and Company, New York
- Port, M H 1976. *The Houses of Parliament*, Yale University Press, Newhaven
- Punch*, 18 April 1846, 'Reid's air brewery', 168
- Punch*, 16 May 1846, 'Reid's process', 218
- Reid, D B 1830. *Elements of Practical Chemistry*, MacLachlan and Stewart, London
- Reid, D B 1836. *Rudiments of Chemistry: with illustrations of the chemical phenomena of daily life*, William and Robert Chambers, Edinburgh
- Reid, D B 1837a. *Brief Outlines Illustrative of the Alterations in the House of Commons, in Reference to the Acoustic and Ventilating Arrangements*, Neill & Company, Edinburgh
- Reid, D B 1837b. *Testimonials Regarding Dr Reid's Qualification as a Lecturer on Chemistry and Teacher of Practical Chemistry*, Hume Tracts 39, UCL, London
- Reid, D B 1844. *Illustrations of the Theory and Practice of Ventilation*, Longman, Brown, Green & Longmans, London
- Reid, D B 1852. 'Ventilation of the House of Commons: Dr Reid's reply', *Builder*, 13 March, 167
- Reid, D B 1856. 'Eight lectures by David Boswell Reid on progress of architecture in relation to ventilation, warming, lighting, fire-proofing, acoustics, and the general preservation of health', *Smithsonian Ann Rep*, 147–86
- Reid, D B 1863. *Memoir of the late David Boswell Reid*, R. Grant & Son, Edinburgh
- Reid, D B and Harris, E 1858. *Ventilation in American dwellings*, Wiley & Halsted, New York
- Richie, 1862. *Treatise on Ventilation: natural and artificial*, Lockwood & Co., London
- Schoenefeldt, H 2014. 'The temporary Houses of Parliament and David Boswell Reid's architecture of experimentation', *Architect Hist*, **57**, 175–215
- Schoenefeldt, H 2015. 'Reid's short-lived ventilation system for the permanent House of Commons', in *Proceedings of the Second Conference of the Construction History Society*, 20/21 March 2015, Cambridge, 167–82, Construction History Society, Cambridge
- Schoenefeldt, H 2016a. 'Architectural and scientific principles in the design of the Houses of Parliament', in *New Directions in Gothic Revival Studies*, Leuven University Press, Leuven
- Schoenefeldt, H 2016b. 'The lost (first) chamber of the House of Commons', *AA Files*, **72**, 161–73
- Schoenefeldt, H 2016c. 'Question time', *CIBSE J*, Sept, 70–4
- Shenton, C 2016. *Mr Barry's War: rebuilding the Houses of Parliament after the Great Fire of 1834*, Oxford University Press, Oxford
- Sturrock, N and Lawson-Smith, P 2006. 'The grandfather of air-conditioning: the work and influence of David-Boswell Reid', in *Proceedings of the Second International Congress on Construction History*, 29 March–2 April 2006, Cambridge, 2981–98, Construction History Society, Cambridge
- Times*, 26 May 1846, 'House of Commons', 5
- Times*, 9 February 1852, 'The science of ventilation has at length been', 4
- Times*, 5 May 1853, 'Parliamentary notices', 4
- Times*, 11 March 1854, 'Ventilation of the House', 7
- Times*, 28 April 1854, 'House of Commons, 27 April', 3
- Tomlinson, R 1846. *A Rudimentary Treatise on Warming and Ventilation*, John Weale, London
- Yorkshire Gazette*, 13 June 1835, 'New House of Commons', 4
- Weightman, G 2003. *The Frozen Water Trade: how ice from New England lakes kept the world cool*, Harper Collins, London
- Wyman, M 1846. *A Practical Treatise on Ventilation*, James Munroe, London