



# Kent Academic Repository

Holder, Simon J., Woodward, Glen, McKenzie, Beulah and Sommerdijk, Nico A. J. M. (2014) *Semi-crystalline block copolymer bicontinuous nanospheres for thermoresponsive controlled release*. RSC Advances, 4 (50). pp. 26354-26358. ISSN 2046-2069.

## Downloaded from

<https://kar.kent.ac.uk/45694/> The University of Kent's Academic Repository KAR

## The version of record is available from

<https://doi.org/10.1039/C4RA04547E>

## This document version

Publisher pdf

## DOI for this version

## Licence for this version

CC BY (Attribution)

## Additional information

## Versions of research works

### Versions of Record

If this version is the version of record, it is the same as the published version available on the publisher's web site. Cite as the published version.

### Author Accepted Manuscripts

If this document is identified as the Author Accepted Manuscript it is the version after peer review but before type setting, copy editing or publisher branding. Cite as Surname, Initial. (Year) 'Title of article'. To be published in *Title of Journal*, Volume and issue numbers [peer-reviewed accepted version]. Available at: DOI or URL (Accessed: date).

## Enquiries

If you have questions about this document contact [ResearchSupport@kent.ac.uk](mailto:ResearchSupport@kent.ac.uk). Please include the URL of the record in KAR. If you believe that your, or a third party's rights have been compromised through this document please see our [Take Down policy](https://www.kent.ac.uk/guides/kar-the-kent-academic-repository#policies) (available from <https://www.kent.ac.uk/guides/kar-the-kent-academic-repository#policies>).

# Semi-crystalline block copolymer bicontinuous nanospheres for thermoresponsive controlled release†

Cite this: *RSC Adv.*, 2014, 4, 26354

Received 13th March 2014  
Accepted 4th June 2014

Simon J. Holder,<sup>\*a</sup> Glen Woodward,<sup>a</sup> Beulah McKenzie<sup>ab</sup>  
and Nico A. J. M. Sommerdijk<sup>b</sup>

DOI: 10.1039/c4ra04547e

www.rsc.org/advances

We demonstrate the controlled release of pyrene, as a model hydrophobic molecule, from self-assembled bicontinuous nanospheres formed from an amphiphilic block copolymer. The bicontinuous polymer nanospheres act as efficient nanocarriers and the incorporation of hydrophobic poly(alkyl methacrylate) blocks introduces a temperature responsive component to the hydrophobic core.

Block copolymer self-assembled aggregates have long been studied as nanocarriers for the controlled delivery of encapsulated chemicals, with particular focus on the controlled delivery of pharmaceuticals in biomedical applications. To date most research has focussed on the use of spherical micelles and vesicles (polymersomes) with some studies utilising cylindrical micelles.<sup>1,2</sup> We have recently demonstrated the existence of self-assembled bicontinuous polymer nanospheres (BPNs) from amphiphilic block copolymers with low weight fractions of hydrophilic blocks (<25%).<sup>3–5</sup> Whilst micelles and vesicles have primarily been studied for the encapsulation and release of lipophilic and hydrophilic compounds respectively, BPNs offer the potential for dual release formulations (*e.g.* a lipophilic and a hydrophilic pharmaceutical) stemming from the coexistence of the hydrophilic and hydrophobic interior regions. Herein we present the results from our studies into successfully encapsulating a hydrophobic compound (pyrene) into such nanospheres, and the subsequent controlled release of pyrene as a function of temperature.

Thermoresponsive polymers, macromolecules that undergo a physical property change in response to a change in

temperature, have been proposed for a number of potential applications. One of the most common being for controlled release from discrete self-assembled aggregates such as micelles and vesicles in biomedical and pharmaceutical uses.<sup>1,2</sup> Most of these thermoresponsive systems have been based upon poly(*N*-isopropylacrylamide) and poly(oligoethylene glycol)<sup>6</sup> and other hydrophilic polymers.<sup>7</sup> Upon heating above a given temperature (the lower critical solution temperature) such materials become insoluble. A different approach to utilising thermoresponsive polymers has been described using poly(trimethylene carbonate) wherein a melting transition for a hydrophobic polymer results in a profound change in permeability.<sup>8,9</sup> Unfortunately polymers for which crystallinity is a property of the main chain have limitations, particularly with respect to manipulation of the melting temperature. A promising approach to the use of semi-crystalline polymers for temperature responsive applications is the incorporation of the crystalline segment as a component of the side-chain; *i.e.* removed from the backbone.<sup>10</sup> By changing the alkyl chain length the melting temperature can be modulated.<sup>11</sup> The poly(alkyl (meth)acrylates) are ideal candidates for this approach.<sup>12</sup> In this study we demonstrate the potential of this alternative whereby we use poly(octadecyl methacrylate) as semi-crystalline polymer component in a block copolymer bicontinuous nanosphere and demonstrate the release of pyrene across a range of temperatures from 10 to 40 °C.

We prepared poly(ethylene oxide)-*block*-poly(octadecyl methacrylate) (PEO-*b*-PODMA) bicontinuous nanospheres in aqueous solution by the slow addition of deionised water to a THF solution of a PEO<sub>45</sub>-*b*-PODMA<sub>20</sub> copolymer ( $M_n = 10\,900$ ,  $M_w/M_n = 1.26$ , by GPC) followed by dialysis against water at 10 °C (ESI†).<sup>5</sup> The resulting BPNs displayed a bicontinuous internal structure of interpenetrating PODMA and PEO–water domains with average pore diameters of 20 nm as characterised by cryo-TEM and cryo-ET. The resulting size distribution was monomodal with a z-average diameter of  $180 \pm 3$  nm, a number-average diameter of  $127 \pm 8$  nm and polydispersity index of 0.27 by DLS and  $235 \pm 16$  nm by TEM (Fig. 1a, c and ESI†). BPNs

<sup>a</sup>Functional Materials Group, University of Kent, Canterbury, CT2 8EN, UK. E-mail: S.J.Holder@kent.ac.uk; Tel: +44 1227 823542

<sup>b</sup>Laboratory of Materials and Interface Chemistry and Soft Matter Cryo-TEM Research Unit, Eindhoven University of Technology, P.O. Box 513, 5600 MB Eindhoven, The Netherlands

† Electronic supplementary information (ESI) available: Experimental methods and techniques; Py in water fluorescence spectra and calibration curve; diffusion modelling fitting plots for PEO–PODMA nanospheres, micelles and pure Py; TEM of PEO–PODMA micelles. See DOI: 10.1039/c4ra04547e

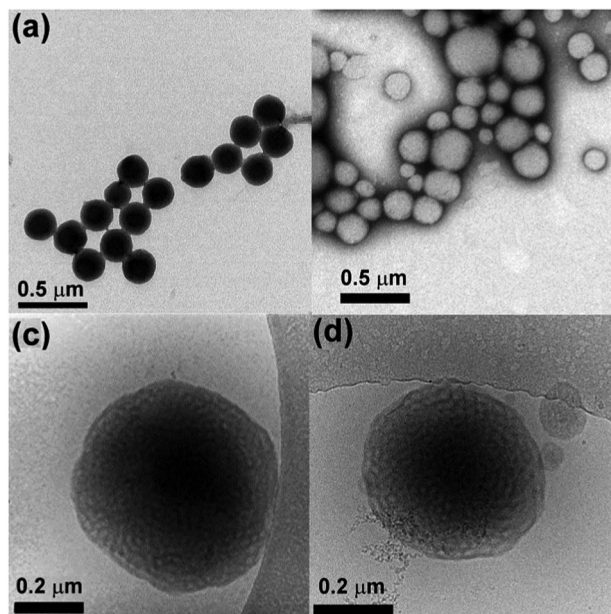


Fig. 1 TEM micrographs of PEO-*b*-PODMA micelles (a) with no pyrene (no staining), (b) with pyrene encapsulated (negative staining). Cryo-TEM micrographs of bicontinuous nanospheres (c) without pyrene and (d) with pyrene, illustrating internal morphology.

resemble cubosomes generated by molecular amphiphiles which are usually stabilised by PEO based additives.<sup>13</sup> Such cubosomes have been proposed and studied for a number of controlled delivery applications.<sup>14,15</sup> Whilst our bicontinuous polymeric nanospheres have lower degrees of order than those of their molecular analogues they are easily prepared, their components (PEO biocompatible corona and alkyl chain interiors) are intrinsic to the structure and open to ready modification, and crucially they are kinetically stable. By following identical preparation conditions but using a THF solution of pyrene (Py) in place of pure THF we were able to form bicontinuous nanospheres with encapsulated Py with a monomodal distribution with a  $z$ -average diameter of  $268 \pm 23$  nm, a number-average diameter of  $141 \pm 37$  nm, a polydispersity index of 0.27 by DLS (number average) and an average diameter of  $222 \pm 86$  nm by TEM (Fig. 1b, d and ESI†). Py was chosen as a model for the controlled release of hydrophobic compounds owing to its hydrophobic character with very low water solubility (typically in the range  $2 \times 10^{-7}$  to  $10 \times 10^{-7}$  mol dm<sup>-3</sup>).<sup>16,17</sup> Since a dialysis (at 10 °C) was involved in the preparation, it was necessary to demonstrate that a significant amount of Py was still present and retained in the nanospheres. This was demonstrated by analysis of the fluorescent spectra of the Py encapsulated PEO-PODMA solution with that of a Py solution prepared in the absence of the copolymer (Fig. 2). Three aspects of the emission spectra demonstrated encapsulation: (i) a significant difference in emission intensities for otherwise identical quantities of Py, indicative of solubilised Py; (ii) the comparison of the spectra gave  $I_3 : I_1$  ratios ( $I_1$  is the 0–0 vibronic band at 372 nm and  $I_3$  is the 0–737 band at 383 nm) of 1.03 for the encapsulated Py and 0.67 for the Py in water, indicative of Py

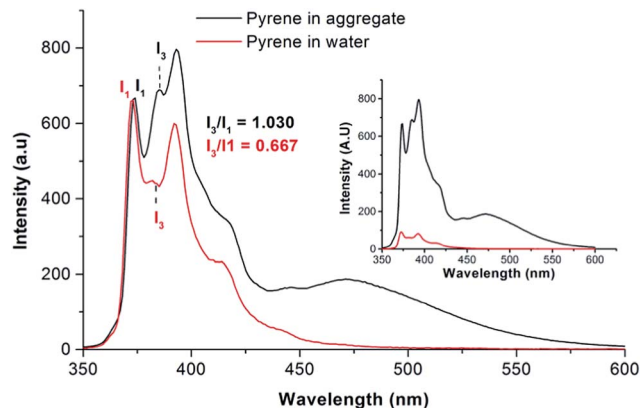


Fig. 2 Normalised fluorescence emission spectra of pyrene in water (red line) and encapsulated in bicontinuous micelle (black line). The inset shows the spectra prior to normalisation.

in a relatively weakly polar environment for the micellar dispersion, and a highly polar environment in water;<sup>5,18,19</sup> (iii) a strong excimer emission ( $\lambda_{\text{max}} = 471$  nm) for the Py in the micellar dispersion; indicative of localised high concentrations of Py.

We previously reported that upon heating from 5 °C to 45 °C a phase transition at 20–25 °C was observed for the bicontinuous components of the PODMA regions of the block copolymer.<sup>5</sup> To study the release of Py into the aqueous environment upon heating, samples of the Py-PEO-PODMA dispersion were isolated from pure water (3 dm<sup>3</sup>) by a dialysis membrane and kept at a set temperature (10, 20, 25, 30 and 40 °C). The relative quantity of Py released into the larger aqueous environment was determined by recording fluorescent spectra of samples at given times over a 6 to 7 hour period (Fig. 3a). A calibration curve of Py in water was used to determine Py concentration variance with time (see ESI†). To confirm that the release of the Py was occurring from the nanospheres the BPN solutions were also analysed by fluorescence spectroscopy after dialysis. In all cases a clear decrease in emission intensity was observed corresponding to loss of pyrene from the nanospheres (Fig. 3b). The release efficiencies were estimated from integration of the curves relative to the undialysed pyrene containing BPN sample (see ESI†). As can be seen (Fig. 3b) a relative maximum in release efficiency (72% release of encapsulated pyrene) was observed at 40 °C. These results also allowed an estimate of the loading capacity and gave a value of 43 μg pyrene per mg of BPN (circa 4% loading). A full study of release efficiency involving infinite sink conditions is needed and is currently underway.

The release profiles for 10 °C, 20 °C and 25 °C are very similar, but for 30–40 °C there is an increasing rate of release of Py (Fig. 3a). The plot of fractional release against time from 10 to 60% release (see ESI†) is linear indicating zero order kinetics and Case-II transport properties (a non-Fickian diffusion release mechanism predominates). Fractional release times were based on extrapolation of the curves in Fig. 3a to constant values resulting from saturation of the water solution by Py which varies with temperature (see ESI†).<sup>16</sup> The change in release rates (taken from the slope of the linear fits, ESI†) show

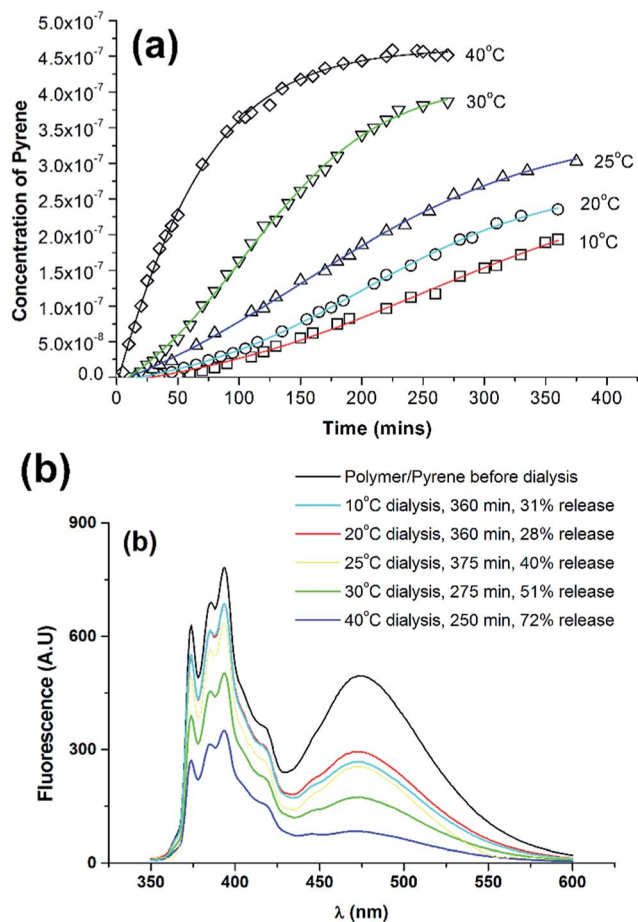


Fig. 3 Release of pyrene from bicontinuous nanospheres formed from PEO<sub>45</sub>-*b*-PODMA<sub>20</sub>, (a) release profiles at various temperatures and (b) photoluminescent spectra of Py nanosphere dispersions before and after dialysis at stated temperatures.

the dramatic change from below 25 °C to above 25 °C (Fig. 4a), with fractional release rate constants of 0.0030 s<sup>-1</sup> at 25 °C and 0.0051 s<sup>-1</sup> at 30 °C and 0.01003 s<sup>-1</sup> at 40 °C. This demonstrates the effect of the melting of the hydrophobic PODMA block on Py release and the potential of poly(alkyl methacrylates) in thermoresponsive controlled delivery applications.

As has become increasingly apparent over the past few years, dynamic equilibrium dialysis conditions are not always suitable for reliably determining the release kinetics of lipophilic compounds from solid nanoparticles and micelles.<sup>20–24</sup> To a large part the apparent release kinetics in such set-ups are a result of the partition coefficient between particle and lipophilic compound within the dialysis chamber, any binding to the dialysis membrane (potentially complicated by nanoparticle effects on the membrane itself) and diffusion rates across the dialysis membrane any and all of which can be the limiting factor in the rate of appearance of the lipophile in the receiving chamber. This can complicate data interpretation and can lead to incorrect conclusions about the release kinetics.<sup>25</sup> As a control experiment, an identical procedure was followed whereby the release of Py from a dispersion prepared without the PEO-PODMA present was monitored. Since Py is only

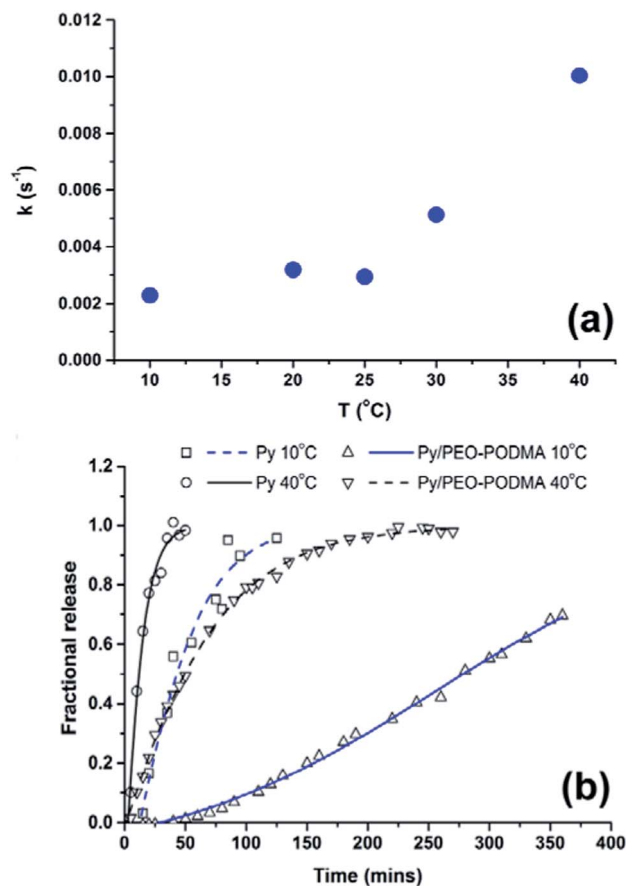


Fig. 4 (a) Time taken for indicated percentage release of pyrene from bicontinuous nanospheres at given temperatures. (b) Comparison of fractional release profiles of 'free' pyrene (see text) and pyrene encapsulated in bicontinuous nanospheres.

sparingly water soluble the bulk of the Py remained undissolved. Transfer of the solid Py–water mixture to dialysis tubing and monitoring of the release profiles showed that release of Py into surrounding water was significantly faster than that of the encapsulated Py at 40 °C and at 10 °C (Fig. 4b). However the difference in release rates for 'free' and encapsulated pyrene and change in rates with temperature for the encapsulated pyrene indicate a controlled release mechanism.

Despite the reservations currently held about the full validity of dynamic equilibrium dialysis in studying release mechanisms, a number of drug dissolution models were fitted to the fractional release profiles namely the Higuchi, zero order, Weibull and Korsmeyer–Peppas (power law) models.<sup>26–31</sup> Of these the Korsmeyer–Peppas model most closely matched the release profiles (between 10 and 60% release) (see ESI†). This model takes the form

$$\frac{M_t}{M_\infty} = at^n$$

where  $M_t/M_\infty$  is the fraction released at time  $t$ ,  $a$  is a constant incorporating structural and geometrical characteristics of the drug dosage form and  $n$  is the release exponent which is indicative of the release mechanism. A release exponent ( $n$ ) of

0.43 for a spherical geometry indicates a release mechanism following Fickian diffusion,  $0.43 < n < 0.85$  indicates an anomalous diffusion mechanism (where encapsulant release is primarily determined by polymer relaxation rates) and  $n > 0.85$  Case-II transport where release rate is determined predominantly by polymer relaxation processes in non-swella-ble and non-degradable systems. By comparing the  $n$  across the temperatures (see ESI†) it was observed that from 10–30 °C the exponent  $n$  took values  $>1.0$  indicative of Super Case-II transport occurring where polymer relaxation properties were the determining factor for the release rates over Fickian diffusion determined by Py concentration gradients.<sup>32</sup> This is in line with transport mechanisms observed for non-swella-ble and non-degradable synthetic polymers.<sup>32–34</sup> The exact location of the Py in the BPNs is uncertain. The fluorescence data (Fig. 2) demonstrates that the majority of the Py is not simply adsorbed onto the surface of the spheres (a substantially lower  $I_3/I_1$  ratio would be expected as a consequence of the polarity of the immediate environment).<sup>18</sup> Thus there are four possible internal regions in the BPNs that can be considered as sites for the Py; (i) the PEO + H<sub>2</sub>O region, (ii) the PEO–PODMA interfacial region, (iii) the PODMA amorphous polar backbone region, (iv) the crystalline octadecyl region) (Scheme 1). The PEO–H<sub>2</sub>O region can be discounted since the observed  $I_3/I_1$  ratio is much higher than would be expected and the octadecyl crystalline region can be discounted due to the lower  $I_3/I_1$  ratio than expected (Fig. 2) and it is known that chromophores are excluded from the crystalline regions in polymers.<sup>19</sup> Thus the Py can be postulated to reside predominantly in the PEO–PODMA interfacial region and/or the PODMA backbone region. The observed  $I_3/I_1$  ratio precludes neither of these possibilities. That the rate of release increases significantly above  $T_m$  of PODMA is in line with the previously observed dramatic increases in gas permeability above  $T_m$ . The increase in permeability is directly attributable to a decrease in backbone stiffness in wholly amorphous state compared to the semi-crystalline state. Thus for the BPNs we suggest that above  $T_m$  the relaxation rates of the PODMA chains increase and diffusion through the polymer is greatly enhanced.

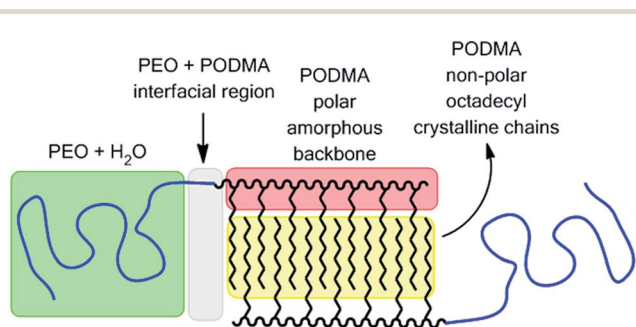
In summary we have demonstrated that self-assembled bicontinuous nanospheres formed from amphiphilic block copolymers can be used to encapsulate and therefore transport hydrophobic compounds in water. They have been demonstrated to display controlled release and furthermore the release

rate can be significantly increased through an increase in temperature.

Finally we note that the melting temperatures of the poly-(alkyl(meth)acrylates) are readily altered through the use of different lengths of alkyl chains as substituents and our current work is investigating raising the transition temperatures to greater than 30 °C.

## Notes and references

- 1 A. Rösler, G. W. M. Vandermeulen and H.-A. Klok, *Adv. Drug Delivery Rev.*, 2012, **64**, 270–279.
- 2 U. Kedar, P. Phutane, S. Shidhaye and V. Kadam, *Nanomedicine: Nanotechnology, Biology and Medicine*, 2010, **6**, 714–729.
- 3 B. E. McKenzie, J. F. de Visser, H. Friedrich, M. J. M. Wirix, P. H. H. Bomans, G. de With, S. J. Holder and N. A. J. M. Sommerdijk, *Macromolecules*, 2013, **46**, 9845–9848.
- 4 B. E. McKenzie, S. J. Holder and N. A. J. M. Sommerdijk, *Curr. Opin. Colloid Interface Sci.*, 2012, **17**, 343–349.
- 5 B. E. McKenzie, F. Nudelman, P. H. Bomans, S. J. Holder and N. A. Sommerdijk, *J. Am. Chem. Soc.*, 2010, **132**, 10256–10259.
- 6 H. Wei, S.-X. Cheng, X.-Z. Zhang and R.-X. Zhuo, *Prog. Polym. Sci.*, 2009, **34**, 893–910.
- 7 S. Hocine and M.-H. Li, *Soft Matter*, 2013, **9**, 5839–5861.
- 8 C. Sanson, O. Diou, J. Thevenot, E. Ibarboure, A. Soum, A. Brûlet, S. Miraux, E. Thiaudière, S. Tan and A. Brisson, *ACS Nano*, 2011, **5**, 1122–1140.
- 9 C. Sanson, J. F. Le Meins, C. Schatz, A. Soum and S. Lecommandoux, *Soft Matter*, 2010, **6**, 1722–1730.
- 10 G. Street, D. Illsley and S. Holder, *J. Polym. Sci., Part A: Polym. Chem.*, 2005, **43**, 1129–1143.
- 11 K. O'Leary and D. R. Paul, *Polymer*, 2004, **45**, 6575–6585.
- 12 E. Hempel, H. Huth and M. Beiner, *Thermochim. Acta*, 2003, **403**, 105–114.
- 13 P. T. Spicer, *Curr. Opin. Colloid Interface Sci.*, 2005, **10**, 274–279.
- 14 C. Y. Guo, J. Wang, F. L. Cao, R. J. Lee and G. X. Zhai, *Drug Discovery Today*, 2010, **15**, 1032–1040.
- 15 S. B. Rizwan, B. J. Boyd, T. Rades and S. Hook, *Expert Opin. Drug Delivery*, 2010, **7**, 1133–1144.
- 16 F. P. Schwarz, *J. Chem. Eng. Data*, 1977, **22**, 273–277.
- 17 T. A. Andersson, K. M. Hartonen and M.-L. Riekkola, *J. Chem. Eng. Data*, 2005, **50**, 1177–1183.
- 18 D. C. Dong and M. A. Winnik, *Can. J. Chem.*, 1984, **62**, 2560–2565.
- 19 S. Abraham, T. D. Atvars and R. G. Weiss, *J. Phys. Chem. B*, 2010, **114**, 12221–12233.
- 20 B. J. Boyd, *Int. J. Pharm.*, 2003, **260**, 239–247.
- 21 C. Washington, *Int. J. Pharm.*, 1989, **56**, 71–74.
- 22 Y. Zambito, E. Pedreschi and G. Di Colo, *Int. J. Pharm.*, 2012, **434**, 28–34.
- 23 H. Bunjes, *J. Pharm. Pharmacol.*, 2010, **62**, 1637–1645.
- 24 C. Washington, *Int. J. Pharm.*, 1990, **58**, 1–12.
- 25 S. Modi and B. D. Anderson, *Mol. Pharm.*, 2013, **10**, 3076–3089.



Scheme 1 Illustration of potential regions for pyrene inclusion in BPN.

- 26 P. Costa and J. M. Sousa Lobo, *Eur. J. Pharm. Sci.*, 2001, **13**, 123–133.
- 27 T. Higuchi, *J. Pharm. Sci.*, 1963, **52**, 1145–1149.
- 28 C. G. Varelas, D. G. Dixon and C. A. Steiner, *J. Controlled Release*, 1995, **34**, 185–192.
- 29 F. Langenbucher, *J. Pharm. Pharmacol.*, 1972, **24**, 979–981.
- 30 W. Weibull, *J. Appl. Mech.*, 1951, **18**, 293–297.
- 31 R. W. Korsmeyer, R. Gurny, E. Doelker, P. Buri and N. A. Peppas, *Int. J. Pharm.*, 1983, **15**, 25–35.
- 32 Y. Fu and W. J. Kao, *Expert Opin. Drug Delivery*, 2010, **7**, 429–444.
- 33 D. De Kee, Q. Liu and J. Hinestroza, *Can. J. Chem. Eng.*, 2005, **83**, 913–929.
- 34 S. C. George and S. Thomas, *Prog. Polym. Sci.*, 2001, **26**, 985–1017.