



Kent Academic Repository

Lev, Maria, Gilaie-Dotan, Sharon, Gotthilf-Nezri, Dana, Yehezkel, Oren, Brooks, Joseph L, Perry, Anat, Bentin, Shlomo, Bonne, Yoram and Polat, Uri (2015) *Training-induced recovery of low-level vision followed by mid-level perceptual improvements in developmental object and face agnosia*. *Developmental Science*, 18 (1). pp. 50-64. ISSN 1363-755X.

Downloaded from

<https://kar.kent.ac.uk/37494/> The University of Kent's Academic Repository KAR

The version of record is available from

<https://doi.org/10.1111/desc.12178>

This document version

Author's Accepted Manuscript

DOI for this version

Licence for this version

UNSPECIFIED

Additional information

Versions of research works

Versions of Record

If this version is the version of record, it is the same as the published version available on the publisher's web site. Cite as the published version.

Author Accepted Manuscripts

If this document is identified as the Author Accepted Manuscript it is the version after peer review but before type setting, copy editing or publisher branding. Cite as Surname, Initial. (Year) 'Title of article'. To be published in **Title of Journal**, Volume and issue numbers [peer-reviewed accepted version]. Available at: DOI or URL (Accessed: date).

Enquiries

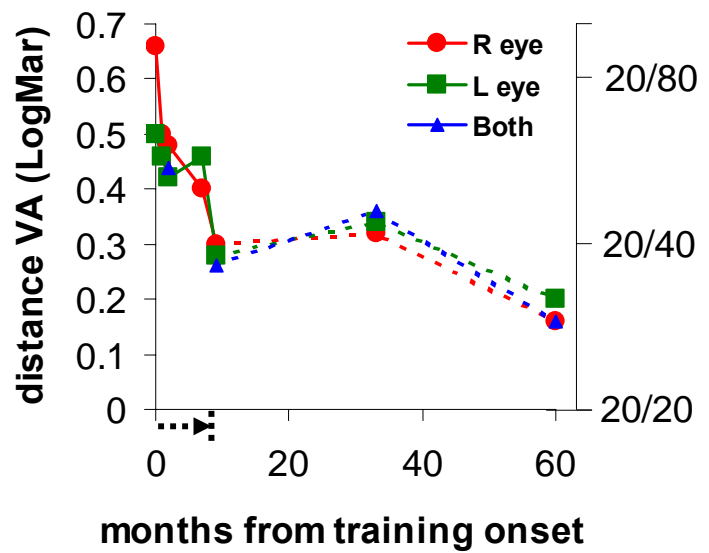
If you have questions about this document contact ResearchSupport@kent.ac.uk. Please include the URL of the record in KAR. If you believe that your, or a third party's rights have been compromised through this document please see our [Take Down policy](https://www.kent.ac.uk/guides/kar-the-kent-academic-repository#policies) (available from <https://www.kent.ac.uk/guides/kar-the-kent-academic-repository#policies>).

Figure 1

A



B



C

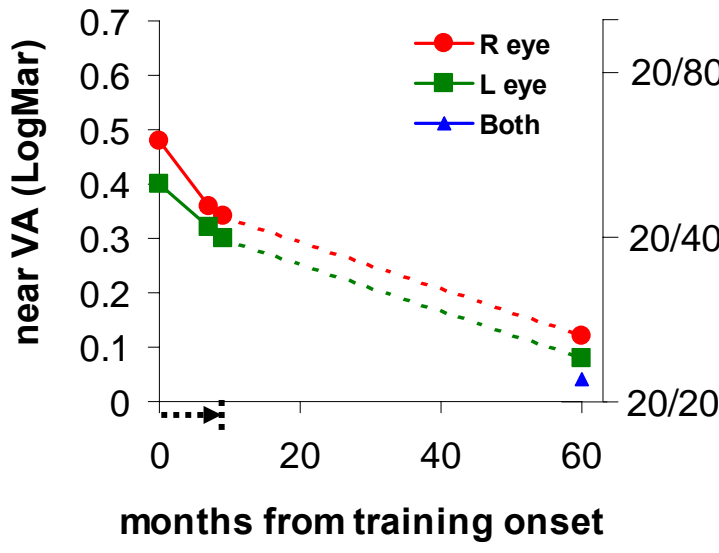
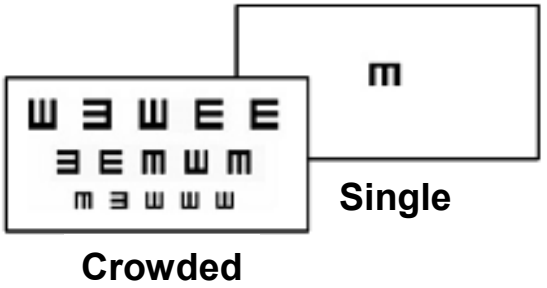


Figure 2

A



B

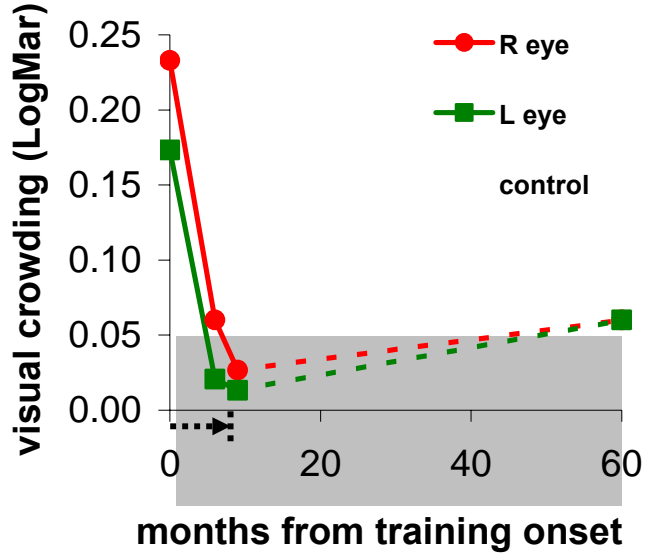
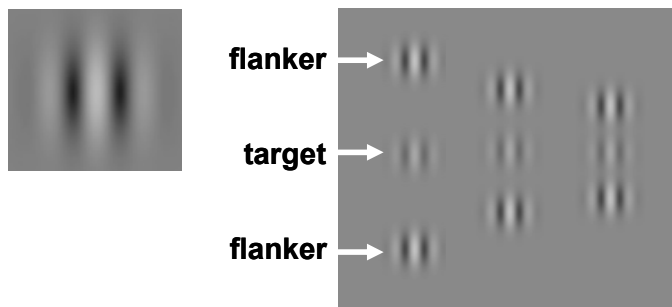
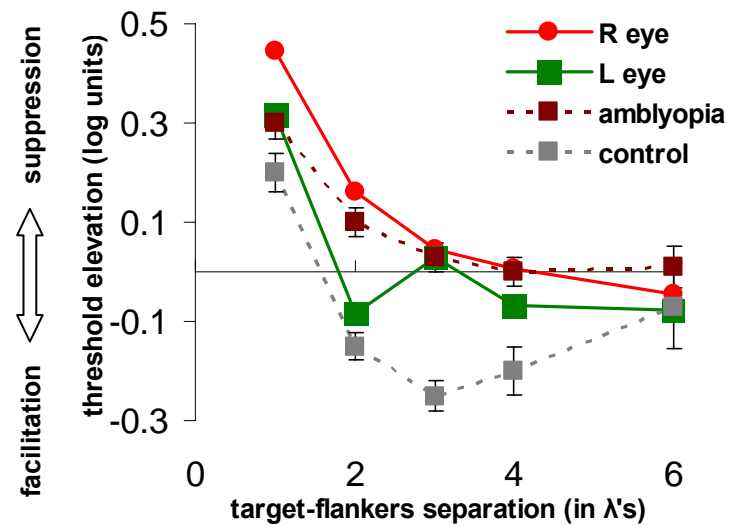


Figure 3

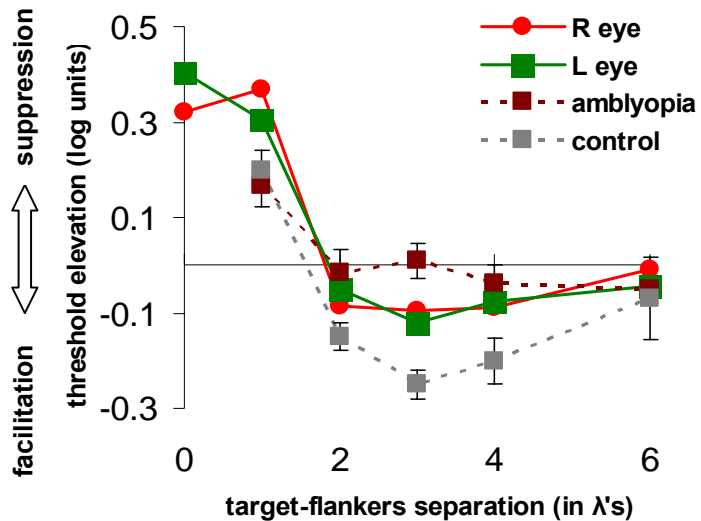
A



B



C



D

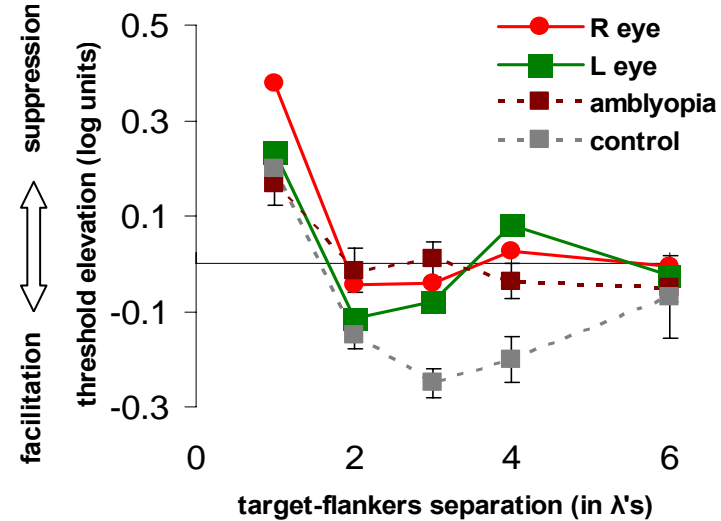
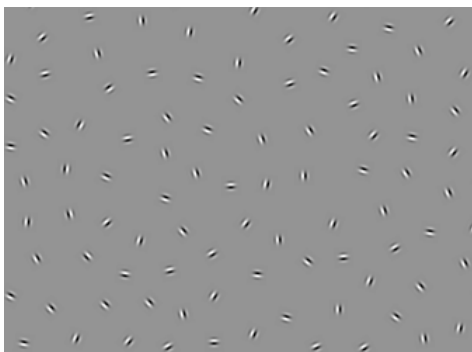


Figure 4

A



B

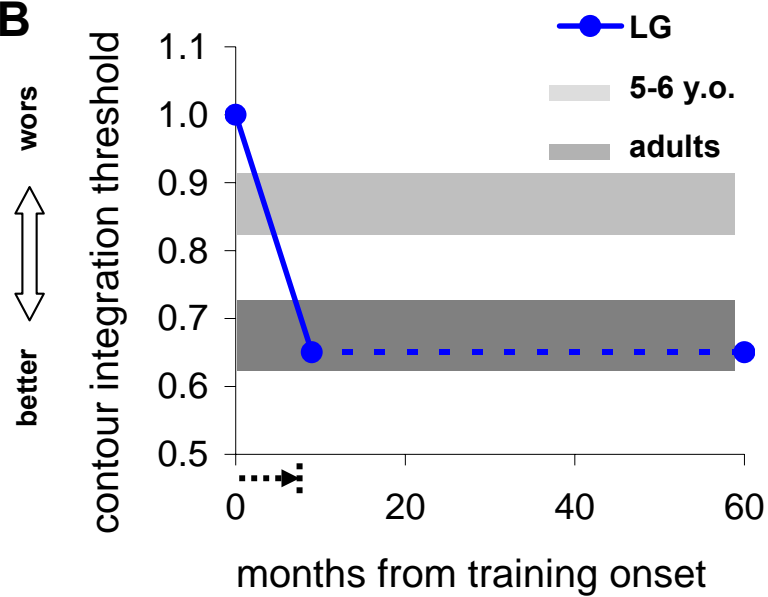
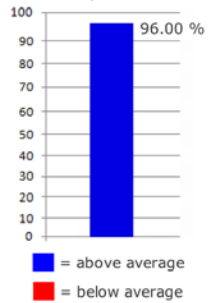


Figure 5

Graph of the total score,
72 out of 75 correct,
in percent



Scores for each subtest.

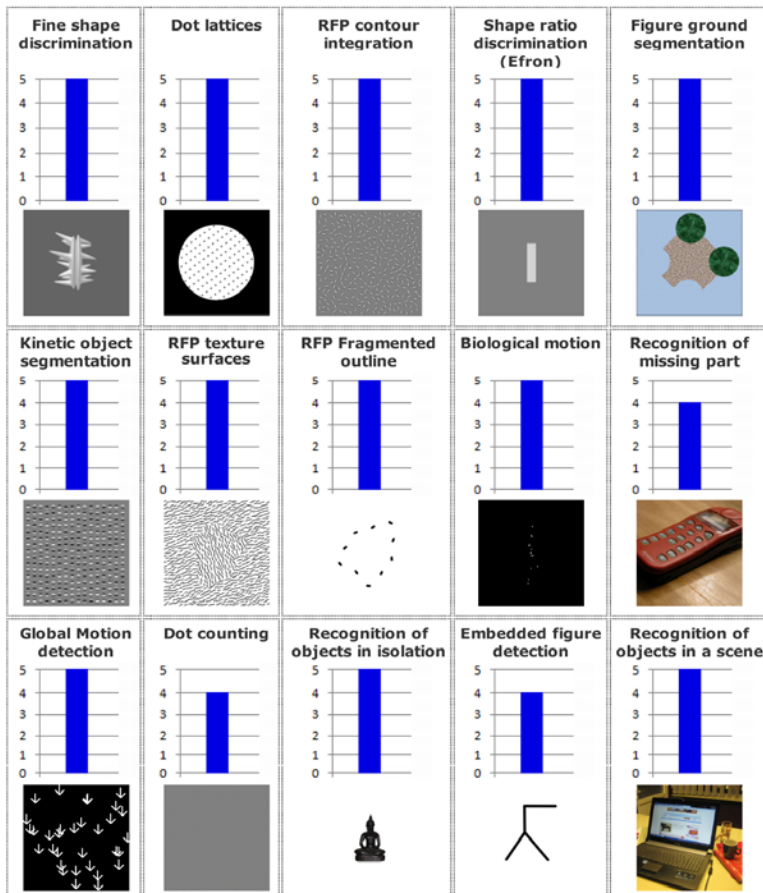


Figure 6

