



# Kent Academic Repository

Yasinska, Inna M., Ceccone, Giacomo, Ojea-Jimenez, Isaac, Ponti, Jessica, Hussain, Rohanah, Siligardi, Giuliano, Berger, Steffen M., Fasler-Kan, Elizaveta, Bardelli, Marco, Varani, Luca and others (2018) *Highly specific targeting of human acute myeloid leukaemia cells using pharmacologically active nanoconjugates*. *Nanoscale*, 10 (13). pp. 5827-5833. ISSN 2040-3364.

## Downloaded from

<https://kar.kent.ac.uk/66542/> The University of Kent's Academic Repository KAR

## The version of record is available from

<https://doi.org/10.1039/C7NR09436A>

## This document version

Author's Accepted Manuscript

## DOI for this version

## Licence for this version

UNSPECIFIED

## Additional information

## Versions of research works

### Versions of Record

If this version is the version of record, it is the same as the published version available on the publisher's web site. Cite as the published version.

### Author Accepted Manuscripts

If this document is identified as the Author Accepted Manuscript it is the version after peer review but before type setting, copy editing or publisher branding. Cite as Surname, Initial. (Year) 'Title of article'. To be published in **Title of Journal**, Volume and issue numbers [peer-reviewed accepted version]. Available at: DOI or URL (Accessed: date).

### Enquiries

If you have questions about this document contact [ResearchSupport@kent.ac.uk](mailto:ResearchSupport@kent.ac.uk). Please include the URL of the record in KAR. If you believe that your, or a third party's rights have been compromised through this document please see our [Take Down policy](https://www.kent.ac.uk/guides/kar-the-kent-academic-repository#policies) (available from <https://www.kent.ac.uk/guides/kar-the-kent-academic-repository#policies>).

# Kent Academic Repository

## Full text document (pdf)

### Citation for published version

Yasinska, Inna M. and Ceccone, Giacomo and Ojea-Jimenez, Isaac and Ponti, Jessica and Hussain, Rohanah and Siligardi, Giuliano and Berger, Steffen M. and Fasler-Kan, Elizaveta and Bardelli, Marco and Varani, Luca and Fiedler, Walter and Wellbrock, Jasmin and Raap, Ulrike and Gibbs, Bernhard F. and Calzolari, Luigi and Sumbayev, Vadim V. (2018) Highly specific targeting of

### DOI

<https://doi.org/10.1039/C7NR09436A>

### Link to record in KAR

<http://kar.kent.ac.uk/66542/>

### Document Version

Author's Accepted Manuscript

#### Copyright & reuse

Content in the Kent Academic Repository is made available for research purposes. Unless otherwise stated all content is protected by copyright and in the absence of an open licence (eg Creative Commons), permissions for further reuse of content should be sought from the publisher, author or other copyright holder.

#### Versions of research

The version in the Kent Academic Repository may differ from the final published version.

Users are advised to check <http://kar.kent.ac.uk> for the status of the paper. **Users should always cite the published version of record.**

#### Enquiries

For any further enquiries regarding the licence status of this document, please contact:

[researchsupport@kent.ac.uk](mailto:researchsupport@kent.ac.uk)

If you believe this document infringes copyright then please contact the KAR admin team with the take-down information provided at <http://kar.kent.ac.uk/contact.html>



## Highly specific targeting of human acute myeloid leukaemia cells using pharmacologically active nanoconjugates

Received 00th January 20xx,

Inna M. Yasinska<sup>a\*</sup>, Giacomo Ceccone<sup>b</sup>, Isaac Ojea-Jimenez<sup>b</sup>, Jessica Ponti<sup>b</sup>, Rohanah Hussain<sup>c</sup>, Giuliano Siligardi<sup>c</sup>, Steffen M. Berger<sup>d</sup>, Elizaveta Fasler-Kan<sup>d</sup>, Marco Bardelli<sup>e</sup>, Luca Varani<sup>e</sup>, Walter Fiedler<sup>f</sup>, Jasmin Wellbrock<sup>f</sup>, Ulrike Raap<sup>g</sup>, Bernhard F. Gibbs<sup>a,g\*</sup>, Luigi Calzolari<sup>b\*</sup>, Vadim V. Sumbayev<sup>a\*</sup>

Accepted 00th January 20xx

DOI: 10.1039/x0xx00000x

[www.rsc.org/](http://www.rsc.org/)

**In this study we used 5 nm gold nanoparticles as delivery platforms to target cancer cells expressing the immune receptor Tim-3 using single chain antibodies. Gold surfaces were also covered with the cytotoxic drug rapamycin which was immobilised using a glutathione linker. These nanoconjugates allowed highly specific and efficient delivery of cytotoxic rapamycin into human malignant blood cells.**

### Introduction

Highly specific targeting of human malignant blood cells with the purpose of delivering cytotoxic drugs into them is a very promising but not well-developed strategy of leukaemia treatment. Leukaemia is a blood/bone marrow cancer originating from self-renewing malignant immature precursors or transformed leukocytes. It is a severe and often fatal systemic malignancy which affects haematopoiesis, immune defence and followed by many other body systems [1]. Chemotherapy of leukaemia is often problematic since the drugs used are generally toxic and could kill other growing and quickly proliferating cells such as stem cells, thus affecting normal haematopoiesis and consequent recovery [2]. Therefore, the use of drug delivery systems selectively

targeting leukaemia cells could reduce overall toxicity and would be a considerable advantage in anti-leukaemia therapy. We have recently shown that citrate-stabilised gold nanoparticles (AuNPs) can be used as drug delivery platforms [3, 4]. They display a reasonable level of biocompatibility, anti-inflammatory properties and inability to affect cells on their own [3, 5]. In this study we designed a fundamentally novel type of nanocomplex, where 5 nm AuNPs were used as a delivery platform and carried a 27 kDa single chain antibody against T cell immunoglobulin and mucin domain 3 (Tim-3) at a ratio of 1 AuNP : 1 antibody molecule. The rest of the gold surface was covered with rapamycin immobilised in the form of glutathione-SH ester.

The immune receptor Tim-3 is highly expressed in human acute myeloid leukaemia (AML) cells compared to healthy leukocytes and thus can be used as a receptor for targeted drug-delivery complexes [6-8]. Rapamycin inhibits the activity of mammalian target of rapamycin (mTOR), an enzyme displaying serine/threonine protein kinase activity which acts as a master regulator of translational pathways in AML cells. Inhibiting mTOR leads to rapid killing of AML cells [3, 8]. Using these nanoconjugates (NCJ) we managed to successfully deliver rapamycin into AML cells and reduce mTOR activity. The concentration of rapamycin required to reach such an effect was at least 50 times lower compared to that of free rapamycin required to achieve similar effect. We therefore concluded that our technology is of potential use for highly specific targeting of AML cells.

### Materials and Methods

#### Materials

<sup>a</sup> School of Pharmacy, University of Kent, Anson Building, Central Avenue, Chatham Maritime, Kent, ME4 4TB, United Kingdom.

<sup>b</sup> European Commission Joint Research Centre, Ispra, Italy.

<sup>c</sup> Beamline B23, Diamond Light Source, Didcot, UK

<sup>d</sup> Department of Paediatric Surgery and Department of Biomedical Research, Children's Hospital, Inselspital, University of Bern, 3010 Bern, Switzerland.

<sup>e</sup> Institute for Research in Biomedicine, Università della Svizzera italiana (USI), Via Vela 6, 6500 Bellinzona, Switzerland

<sup>f</sup> Department of Oncology, Hematology and Bone Marrow Transplantation with Section Pneumology, Hubertus Wald University Cancer Center, University Medical Center Hamburg-Eppendorf, Germany

<sup>g</sup> Department of Dermatology, University of Oldenburg, Germany

\* Corresponding authors: [V.Sumbayev@kent.ac.uk](mailto:V.Sumbayev@kent.ac.uk); [luigi.calzolari@ec.europa.eu](mailto:luigi.calzolari@ec.europa.eu); [bernhard.gibbs@uni-oldenburg.de](mailto:bernhard.gibbs@uni-oldenburg.de); [I.Yasinska-24@kent.ac.uk](mailto:I.Yasinska-24@kent.ac.uk)

RPMI-1640 medium, foetal bovine serum and supplements and basic laboratory chemicals were purchased from Sigma (Suffolk, UK). Maxisorp™ microtitre plates were provided either by Nunc (Roskilde, Denmark) or Oxley Hughes Ltd (London, UK). Antibodies against phospho-S65 and total eIF4E-BP were obtained from Cell Signaling Technology (Danvers, MA USA). Goat anti-mouse and goat anti-rabbit fluorescence dye-labelled antibodies were obtained from Li-Cor (Lincoln, Nebraska USA). Anti-Tim-3 mouse monoclonal antibody and its single chain variant were produced as previously described [9]. All other chemicals purchased were of the highest grade of purity and available commercially from Fisher Scientific (Loughborough, UK) and Sigma (Suffolk, UK).

### Gold nanoparticles

AuNPs 5 nm synthesis was performed essentially as described previously [10]. Briefly, 5 ml of aqueous gold (III) chloride trihydrate (10 mM) and 2.5 ml of aqueous sodium citrate (100 mM) were added to 95 ml of milliQ-water in a round bottom flask equipped with a magnetic stirrer, and the resulting pale yellow solution was allowed to cool down to 1–2°C. Under vigorous stirring 1 ml of chilled (4°C) aqueous sodium borohydride (0.1 M) was added and the resulting dark red solution was then stirred for further 10 min in ice bath before being allowed to warm to the room temperature.

Nanomaterials were characterised as described before [3].

### Cells

THP-1 human leukaemia monocytic macrophages were purchased from the European collection of Cell Cultures (Salisbury, UK). They were grown in RPMI 1640 media supplemented with 10% foetal calf serum, penicillin (50 IU/ml) and streptomycin sulphate (50 µg/ml) and used for the experiments during passages 8 – 20.

Primary human AML cells were obtained from the sample bank of the University Medical Centre Hamburg-Eppendorf (Ethik-Kommission der Ärztekammer Hamburg, reference: PV3469). Cells were cultured in IMDM medium containing 15% BIT 9500 serum substitute, 100 µM mercaptoethanol, 100 ng/ml stem cell factor (SCF), 50 ng/ml FLT3 ligand, 20 ng/ml G-CSF, 20 ng/ml IL-3, 1 µM UM729 and 500 nM stemregenin 1 (SR1) as described before [11].

### Western blot analysis

Phosphorylation of the mTOR substrate - eukaryotic initiation factor 4E binding protein (eIF4E-BP) in the position Serine 65 (S65) was analysed by Western blot analysis as described previously [8]. Actin expressions were measured in order to validate equal protein loading. Li-Cor (Lincoln, Nebraska USA) goat secondary antibodies conjugated with fluorescent dyes for 60 min were employed according to the manufacturer's protocol and proteins were visualised using a Li-Cor Odyssey imaging system. The Western blot data were subjected to quantitative analysis using Odyssey software determining the levels of mTOR-dependent phosphorylation of eIF4e-BP [8].

### Characterisation of cell surface presence of Tim-3 and its natural ligand/trafficking partner galectin-9.

Cell surface presence of Tim-3 and its natural ligand galectin-9 was analysed using fluorescence-activated cell sorting (FACS) as previously described [12]. Briefly, THP-1 cells were incubated with PMA to increase the expression of Tim-3/Gal-9 complex or left untreated. Cells were then fixed with freshly prepared 2% paraformaldehyde, washed 3x with PBS, permeabilised with 0.1% TX-100. In a control set of experiments the THP-1 cells were not fixed/permeabilized. All cells were stained with fluorochrome-labelled antibodies for 1 hour at room temperature and analysed on FACS Calibur cytometer with CellQuestPro software (Becton Dickinson, USA). We also performed a Li-Cor on cell assay (also known as in cell assay, ICA) in order to stain cell surface-based Tim-3. In cell Western (ICW) analysis using methanol as a cell permeabilisation agent was employed to monitor differences between Tim-3 localised inside and outside the cell. Both assays were described previously [8].

### Synchrotron radiation circular dichroism spectroscopy

Nanomaterials were characterised at B23 beamline for synchrotron radiation circular dichroism (SRCD), Diamond Light Source (Didcot, UK). SRCD measurements were performed using 10 cm path length cell, 3 mm aperture diameter and 800 µl capacity using Module B with a 1 nm increment, 1s integration time, and 1.2 nm bandwidth at 23 °C [13, 14]. The results obtained were processed using CDApps programme [13–15] and Origin software (OriginLab™).

### Transmission electron microscopy (TEM) and dynamic light scattering (DLS)

NCJ suspension (3 µl) was manually spotted, after 2 min sonication, on pre-treated (glow discharge, LEICA EM ACE200, 10 mA–30 sec) Formvar Carbon coated 200 mesh copper grids (Agar Scientific, USA). Samples were then dried in a desiccator overnight. Transmission electron microscope (TEM-JEOL JEM 2100, JEOL-Italy) coupled with Energy dispersive X-ray spectroscopy (EDX; X-Flash Detector 5030, Brüker-Italy) was used for imaging and elemental analysis at 120 kV. Quantitative analysis was obtained by Cliff-Lorimer model by QUANTAX 200 software (Brüker, Italy). Results were expressed as mass % of the whole sample measured in the analysed image and compared with NCJ precursors.

Average size in solution of the nanoconjugate was also assessed by DLS (Zetasizer Nano Zs, Malvern Instruments; Malvern, UK) [16].

### Statistical analysis

Each experiment was performed at least three times and statistical analysis when comparing two events at a time was conducted using a two-tailed Student's t-test. Statistical

probabilities ( $p$ ) were expressed as \*, where  $p < 0.05$ , \*\* –  $p < 0.01$  and \*\*\* –  $p < 0.001$ .

## Results and Discussion

### Generation and characterisation of nanoconjugates

Anti-Tim-3 single-chain antibody (anti-Tim-3-ScAb) was coupled to 5 nm AuNPs using glutathione (GSH, tripeptide containing  $\gamma$ -glutamate, cysteine-SH and glycine) as a linker. A 0.05 M solution of GSH was incubated for 2 h at room temperature with a 1:1 mixture of water solutions of 0.4 M 1-ethyl-3-(3-dimethylpropyl)-carbodiimide (EDC) and 0.1 M N-hydroxysuccinimide (NHS) to allow activation of  $-\text{COOH}$  groups of the GSH thus enabling them to interact with amino groups of the anti-Tim3-ScAb. Activated GSH was then mixed with anti-Tim-3scAb in an equimolar ratio and incubated for at least 2 h at 37°C. Antibody was then mixed with 5 nm AuNP (0.5 mM) at a ratio of 1 AuNP : 1 antibody molecule. This mixture was incubated for at least 18 h at room temperature.

The available amount of AuNPs was calculated using the following formula:

- 1)  $N_{\text{AuNP}} = m_{\text{total Au}} / m_{\text{AuNP}}$  ( $m$  = mass;  $N$  = quantity);  
 $m_{\text{total Au}} = C_{\text{Au}}$  (mole/l)  $\times$   $MW_{\text{Au}}$  (g/mole)  $\times$   $V_{\text{AuNP}}$  (l)  
 ( $C$  = molar concentration,  $MW$  = molecular weight,  $V_{\text{AuNP}}$  = the volume of AuNP suspension used)
- 2)  $m_{1\text{AuNP}} = \rho_{\text{Au}} \times V_{1\text{AuNP}}$ ;  
 ( $\rho$  = density,  $V$  = volume;  $\rho_{\text{Au}} = 19.3 \text{ g/cm}^3$ )
- 3)  $V_{1\text{AuNP}} = 4/3 \pi R^3$ ; ( $R$  = radius of AuNP)
- 4)  $R = d_{1\text{AuNP}}/2$ ; ( $d$  = diameter of 1 AuNP expressed in cm)

The amount of antibody molecules was calculated from the molar weight of the anti-Tim-3-ScAb (27,000 g/mole) and the Avogadro constant so that 1 mole of anti-Tim-3-ScAb contained  $6.02 \times 10^{23}$  antibody molecules.

Following antibody immobilisation, the remaining gold surface of each particle was covered with molecules of rapamycin esterified with GSH ester prepared as previously described [4] so that 1 AuNP carried a maximum of 1,000 rapamycin molecules. The size of AuNPs (5 nm) was confirmed using DLS. The size of the NCJ was approximately 10.8 nm.

Materials were characterised using SRCD spectroscopy measuring both near-UV and far-UV spectra. HGS-CO-anti-Tim-3-ScAb, HSG-CO-rapamycin (HGS-CO is the glutathione residue), a mixture of both, AuNPs carrying either anti-Tim-3-ScAb alone or rapamycin were characterised as controls (Figure 1). We found that in both near-UV and far-UV NCJ (NCJ is the same as that represented in figures 5 and 7 containing rapamycin and anti-Tim-3-ScAb [1000:1] per nanoparticle) displayed spectral profiles that were different from those of the controls suggesting that the generation of the complexes were successful with different conformational behaviours (Figure 2).

### Characterisation of nanoparticle construct conformations

In the far-UV region (190-250nm), the SRCD spectrum of the single chain antibody-GSH (ScAb-GSH) showed a negative band at 230nm and a positive band at 205 nm (Fig. 2, black) indicating significant  $\beta$ -strand conformation. In particular, the smaller intensity of the positive band was indicative of the presence of two types of handedness of the  $\beta$ -strand backbone conformation of the single chains. Here, a small excess of the right-handed twist was observed, which is characterised by the bisignate shape with a negative band in the 215-230nm region and a positive band in the 195-205nm region. This interpretation appears to be consistent with the  $\beta$ -strand conformation content estimation of about 45 %, of which 18% was left-handed and 27% right-handed using the BestSel algorithm [16]. The single chain antibody-GSH covalently attached to a gold nanoparticle (ScAb-GSH-NP, Fig. 2, green) retained the  $\beta$ -strand type of SRCD spectrum observed without the gold nanoparticle but with a slight reduction of the left-handed  $\beta$ -strand content.

Stability of nanoconjugates was tested by incubating the materials at increasing temperatures and pH levels. This was followed by spectrophotometric detection of reduced glutathione using 5,5'-dithiobis-(2-nitrobenzoic acid) [17] and antibody detection using Western blotting (to see if these components were displaced from the gold surface). We did not observe detectable amounts of either GSH (data not shown) or antibody under any of the conditions tested (Supplementary figure 1).

We also used TEM to characterise the nanoconjugates. We observed that NCJ particles show spherical morphology typical of AuNPs with primary size diameter (with a short axis length of 5.85 nm). Lower electron-dense zones, compared to gold, were both around single particles and aggregates/agglomerates (indicated by arrows in Supplementary figure 2) could be due to AuNP-bound antibodies. EDX analysis shows that the percentage of sulfur is practically negligible in the AuNP alone (0.89%), while it increases (as expected) in the AuNP-Ab complex (2.28%) and in the NCJ sample (5.54%). These results fit qualitatively well with expected outcomes. In fact, both the Anti-Tim-3 antibody and rapamycin were coupled to AuNPs using glutathione that contains a cysteine amino acid with an  $-\text{SH}$  terminal group. Overall, the data shows that both antibody and rapamycin are bound to AuNPs (Supplementary figure 3).

The DLS data for the NCJ sample gives a Z-average of around 2  $\mu\text{m}$  and a polydispersity index of 0.39. These results indicate that in solution the sample is polydispersed. As shown previously [18] in DLS the presence of a few agglomerates could cover the signal of smaller particles present in solution. This interpretation is consistent with the TEM results (Supplementary figure 1) which show the presence of a large number of small AuNP conjugates together with the presence of larger agglomerates.

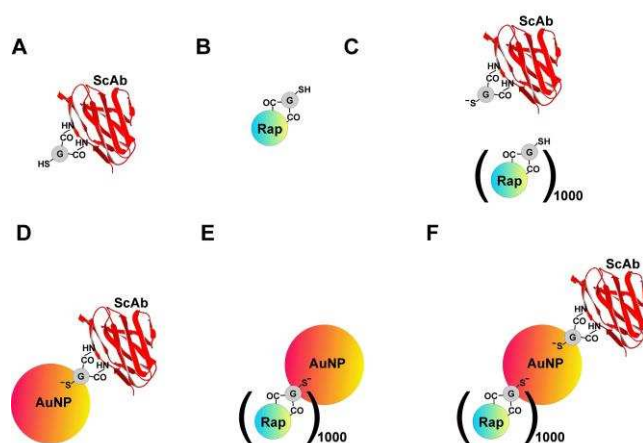
It has been reported that several antibody molecules can be successfully immobilised on a single particle [19]. In our case, a one

to one ratio was optimal to ensure that there was sufficient space on the AuNP surface to be covered with rapamycin.

The SRCD spectrum of rapamycin-GSH showed qualitatively a  $\beta$ -strand type of shape (Fig. 2, red), a negative CD band at about 225nm and positive at about 205nm. This may reflect the conformation of the cysteinyl-glycine dipeptide chromophore, which was too small in terms of intensity to be analysed with BestSel accurately. Upon attachment to the gold nanoparticle (NP), rapamycin-GSH-NP (Fig. 2 magenta) revealed a significant spectral change showing only a positive band at 215nm with the disappearance of the negative band at 225nm. These SRCD changes appear to be dominated by the  $\pi$ - $\pi^*$  transitions of the amide bonds though the contribution from the trienyl group sensitive to the conformational changes of the flexible rapamycin skeleton backbone which cannot be ruled out.

It is interesting to note that the SRCD spectrum of the mixture of rapamycin-GSH with ScAb-GSH [(Rap-GSH)+(ScAb-GSH), Fig. 2, blue] was not superimposable to that calculated by adding the spectrum of rapamycin-GSH to the one of ScAb-GSH (Calc [(Rap-GSH)+(ScAb-GSH)], Fig. 2, dashed blue), suggesting binding interactions between rapamycin-GSH and ScAb-GSH. Similarly, the SRCD changes between the observed spectrum of the NCJ (Fig. 2, yellow) and the one calculated by adding the spectrum of rapamycin-GSH-NP to that of ScAb-GSH-NP (Calc-NCJ-NP, Fig. 2, dashed yellow) highlighted another conformational behaviour of the ScAb-GSH and rapamycin-GSH when coupled to the same nanoparticle. As for rapamycin-GSH with and without coupling to the gold nanoparticle, the BestSel secondary structure content estimation of the mixture [(Rap-GSH)+(ScAb-GSH)] and NCJ from SRCD spectra were not sufficiently accurate to be considered.

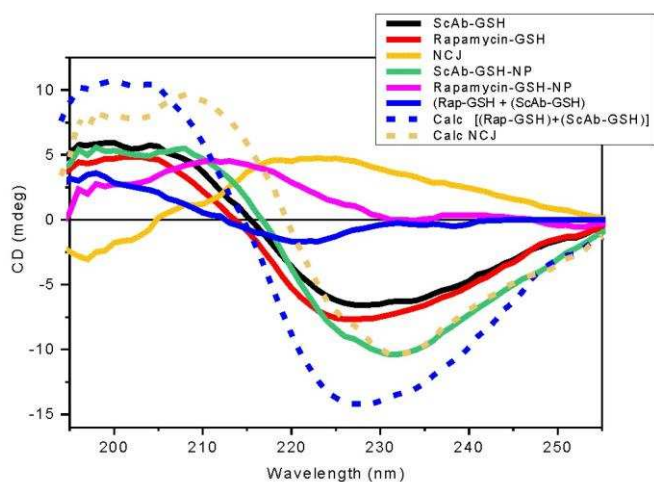
The characterisation by SRCD spectroscopy of the samples and in particular NCJ that appear to be active against primary leukaemia cells is also important for quality control since the SRCD spectra can be used as a fingerprint of these constructs.



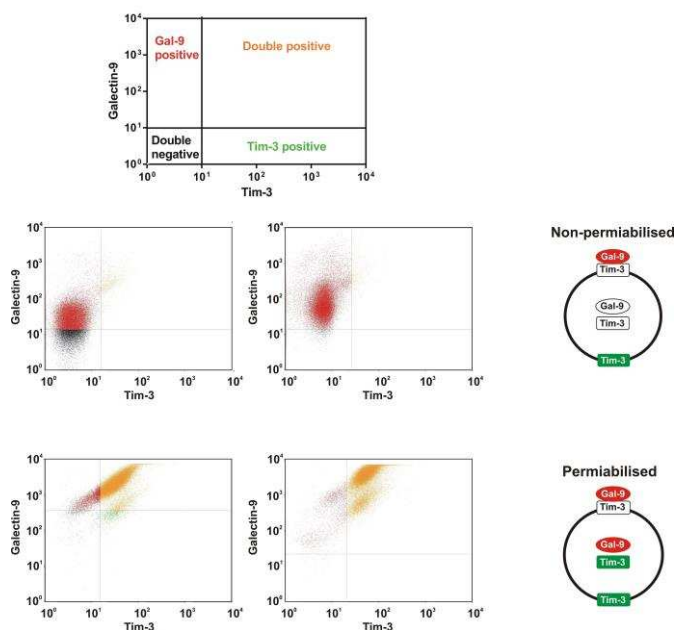
**Figure 1 Nanoconjugates used for characterisation of biological tests.** Six types of materials were generated: (A) glutathione GSH-activated anti-Tim-3-ScAb, (B) glutathione GSH activated rapamycin, (C) a mixture of A and B at a ratio of 1:1000, (D) 5 nm AuNPs carrying anti-Tim-3-ScAb, (E) 5 nm AuNPs carrying rapamycin and (F) nanoconjugate containing 5 nm AuNPs coupled with anti-Tim-3-ScAb and 1000 rapamycin via GSH.

#### Undifferentiated and differentiated THP-1 human AML cells have different amounts of surface-based Tim-3

THP-1 human myeloid leukaemia cells express Tim-3 which acts as a receptor and a trafficker for galectin-9, a protein which protects AML cells against host immune defence [6, 20]. Using FACS (Figure 3) we found that undifferentiated THP-1 cells have much less surface-based Tim-3 and galectin-9, respectively, than cells exposed for 24 h to 100 nM phorbol 12-myristate 13-acetate (PMA). In undifferentiated cells surface-based Tim-3 molecules are occupied with galectin-9 and can only be clearly detected using on cell assay where the cells were pre-incubated with anti-Tim-3 antibody for 2 h that enables the displacement of galectin-9 (Figure 4). PMA activates protein kinase C alpha (PKC $\alpha$ ), an enzyme that triggers the exocytosis of Tim-3 and secretion of galectin-9, thus increasing the amount of both proteins on the cell surface. However, both undifferentiated and differentiated THP-1 cells express high amounts of Tim-3 and most of this protein was observed to translocate onto the cell surface upon stimulation of the cells with PMA as detected by on cell assay and in cell Western (Figure 4). Some of the Tim-3 molecules were bound to galectin-9, others were present in their free form and thus became clearly detectable by both FACS and on cell assay/in cell Western (Figures 3 and 4).



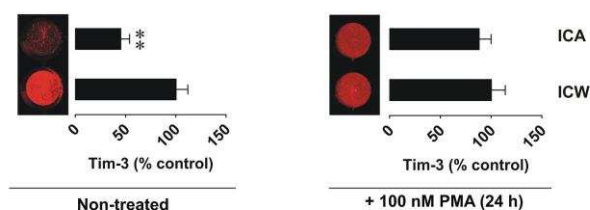
**Figure 2.** Observed far-UV SRCD spectra of ScAb-GSH (black), ScAb-GSH-NP (green), nanoconjugate NCJ (rapamycin-GSH and ScAb-GSH covalently attached to Au nanoparticle [1000:1:1]) (yellow), rapamycin-GSH (red), rapamycin-GSH-NP (magenta), mixture of rapamycin-GSH with ScAb-GSH (blue), calculated spectrum of the mixture of rapamycin-GSH and ScAb-GSH (dashed blue) simulated by adding the spectrum of rapamycin-GSH (red) to that of ScAb-GSH (black) and calculated NCJ (dashed yellow) simulated by adding the spectrum of ScAb-GSH-NP (green) to that of rapamycin-GSH-NP (magenta). Each observed spectrum was the average of 4 consecutive repeated scans.



**Figure 3.** Surface-based and total (intracellular + surface-based) Tim-3 and its ligand galectin-9 (carried by Tim-3) in THP-1 cells.

Non-treated THP-1 cells (left two panels) and those treated for 24 h with 100 nM PMA (right two panels) were subjected to measurement of surface-based and total (cells were permeabilised using methanol) Tim-3 and galectin-9 by FACS as described in Materials and Methods.

Each experiment was performed at least three times. Images are from one experiment representative of three which gave similar results.



**Figure 4.** Tim-3 is mostly located inside resting THP-1 cells but is externalised after PMA-dependent PKC $\alpha$  activation. Tim-3 was measured using a Li-Cor on cell assay with (in cell Western) or without (on cell assay) methanol permeabilisation (see Materials and Methods). Exposure to anti-Tim-3 antibody was performed for 2 h. Images are from one experiment representative of five which gave similar results. Data show mean values  $\pm$  SEM of five independent experiments; \*\* $p < 0.01$ .

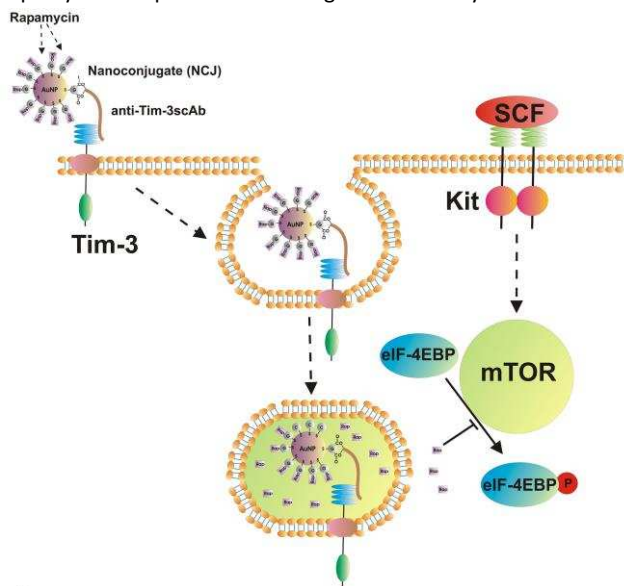
We exposed resting undifferentiated THP-1 cells for 2 h at 37°C to 100 ng/ml human stem cell factor (SCF) that triggers mTOR activation and causes a non-significant increase in the level of cell surface-based Tim-3 in THP-1 cells. Exposures were performed with and without 1 h pre-treatment with NCJ (allowing for a maximal possible concentration of rapamycin of 200 nM – given the ideal case when each AuNP coupled with anti-Tim-3-ScAb carries a maximum of 1000 rapamycin molecules (illustrated in Figure 5). We found that nanoconjugates were able to abrogate SCF-induced mTOR-dependent eIF4E-BP phosphorylation but did not impact on background S65-phospho-eIF4E-BP levels (Figure 6). Neither of the treatments affected cell viability.

We then asked whether an increase in Tim-3 on the cell surface would lead to a greater mTOR-inhibiting effect of the nanoconjugates. THP-1 cells were exposed to 100 nM PMA for 24 h followed by 3 h exposure to the nanoconjugates (illustrated in Figure 7). The same conditions as described above were applied. In this case NCJ completely abrogated the mTOR-dependent phosphorylation of eIF4E-BP (Figure 8). Neither of the treatments affected cell viability. Interestingly, AuNPs carrying either anti-Tim-3-ScAb or rapamycin did not affect mTOR activity in either resting or PMA-treated THP-1 cells (data not shown).

Based on these results one could suggest that successful inhibition of the mTOR-dependent phosphorylation of eIF4E-BP in THP-1 human AML cells depends on the amount of Tim-3 on the cell surface. Anti-Tim-3-ScAb molecules coupled with AuNPs interacted with THP-1 cells, which alike a vast majority of blood cells can perform endocytosis. GSH was then cleaved by membrane-associated enzymes releasing rapamycin inside the target cell (otherwise, the effect will not be observed, since only free

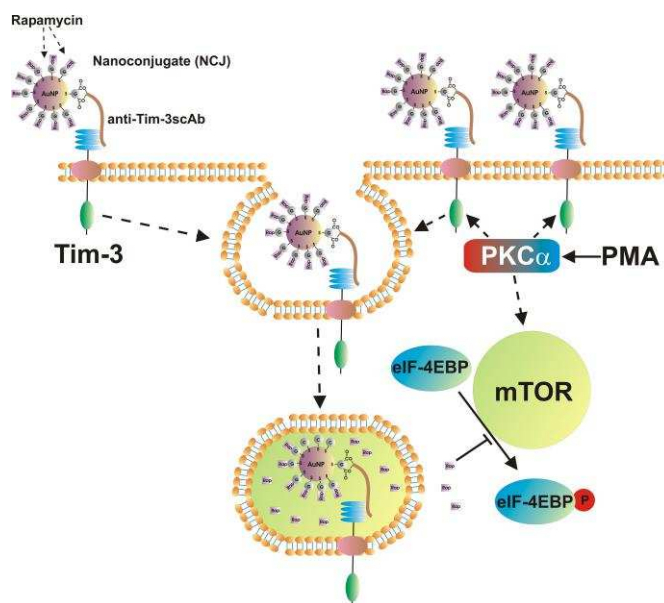


rapamycin is capable of inhibiting mTOR activity inside AML cells).

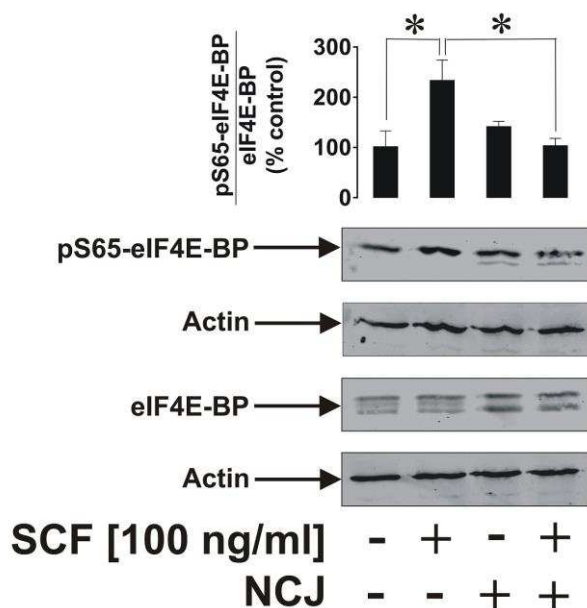


**Figure 5.** Schematic representation of rapamycin delivery into a resting THP-1 human AML cell. The scheme shows SCF-induced activation of the mTOR pathway (in particular, mTOR-catalysed phosphorylation of the eIF4E-BP). It also demonstrates the delivery path of rapamycin and inhibition of mTOR kinase activity.

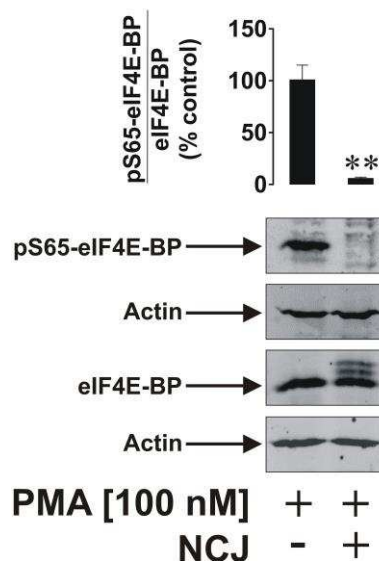
which gave similar results. Data show mean values  $\pm$  SEM of three independent experiments; \* $p < 0.05$ .



**Figure 7.** Schematic representation of rapamycin delivery into a PMA-differentiated THP-1 human AML cell. The scheme shows PMA-induced activation of the mTOR pathway in a PKC $\alpha$ -dependent manner. It also demonstrates the delivery path of rapamycin and subsequent inhibition of the mTOR kinase activity.



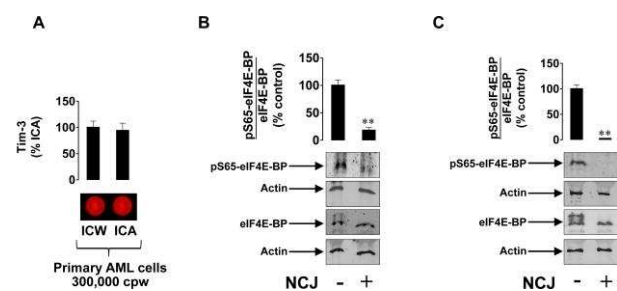
**Figure 6.** Nanoconjugates prevent but do not abolish mTOR activity in undifferentiated THP-1 cells. Cells were pre-treated with NCJ for 1 h to allow for the delivery of maximally 200 nM of rapamycin in the medium. Cells were then exposed for 2 h to 100 ng/ml of SCF or left without further treatment followed by measurement of phospho-S65 and total eIF4E-BP by Western blot as described in Materials and Methods. Images are from one experiment representative of three



**Figure 8.** Nanoconjugates attenuate mTOR activity in PMA-differentiated THP-1 cells. Cells were exposed for 24 h to 100 nM PMA followed by 3 h of exposure to nanoconjugates. Images are from one experiment representative of four which gave similar results. Data show mean values  $\pm$  SEM of four independent experiments; \*\* $p < 0.01$ .

It is important to note that, in order to achieve a complete abrogation of mTOR activity in THP-1 cells, the concentration of free rapamycin has to be at least 10  $\mu\text{M}$ . The use of NCJ led to the same effect but at the rapamycin concentration 50 times lower than the one needed when using the drug in its free form.

The results obtained were validated using primary human AML cells. Tim-3 was clearly expressed on the cell surface as detected by on cell assay vs in cell Western. Cells appeared to be highly sensitive to the effects of nanoconjugates since the levels of phospho-S65-eIF4E-BP were significantly downregulated after 3 h of exposure to NCJs. Almost complete attenuation was observed after 24 h of exposure (Figure 9).



**Figure 9. Nanoconjugates attenuate mTOR activity in primary human AML cells.** Tim-3 expression was mostly confined to the cell surface as measured by in-cell assay and in-cell Western (A). Cells were exposed for 3 (B) or 24 (C) h to nanoconjugates followed by Western blot analysis of S65 phosphorylation of eIF4E-BP. Images are from one experiment representative of four which gave similar results. Data show mean values  $\pm$  SEM of four independent experiments; \*\* $p < 0.01$ .

## Conclusions

Our results demonstrate that the targeted nanocarrier we have developed enables the delivery of otherwise toxic drugs into leukaemia cells with a high level of efficiency through Tim-3. Successful delivery depends on the cell surface expression of the target protein, which in our case was Tim-3. These nanoconjugates now require further studies using *ex vivo* and *in vivo* systems. This technology might be also considered for highly specific capturing of target cells that carry a surface-based protein biomarker of interest.

## References

- Vick E, Mahadevan D. *Expert Opin Investig Drugs*. 2016; **25**, 1-16.
- Romero P et al. *Sci Transl Med*. 2016; **8**,334ps9. doi: 10.1126/scitranslmed.aaf0685.
- Sumbayev, V. V., Yasinska, I. M., Garcia, C. P., Gilliland, D., Lall, G. S., Gibbs, B. F., Bonsall, D. R., Varani, L., Rossi, F., and Calzolari, L. *Small*, 2013, **9**, 472-477.
- Gibbs, B. F., Yasinska, I. M., Calzolari, L., Gilliland, D., and Sumbayev, V.V. *J. Biomed. Nanotechnol.* 2014, **10**, 1259-1266.

- Pascual Garcia, C., Sumbayev, V. V., Gilliland, D., Yasinska, I. M., Gibbs, B. F., Mehn, D., Calzolari, L., Rossi, F. *Sci. Rep.* 2013, **3**, 1326.
- Gonçalves Silva, I., Rugg, L., Gibbs, B. F., Bardelli, M., Fruewirth, A. Varani, L., Berger, S., Fasler-Kan, E., and Sumbayev, V. V. *Oncolmmunology* 2016, **5**, e1195535.
- Kikushige Y, Miyamoto T. *Int J Hematol* 2013, **98**, 627-633.
- Goncalves Silva I, Gibbs BF, Bardelli M, Varani L, Sumbayev VV. *Oncotarget* 2015, **6**, 33823-33833.
- Prokhorov A, Gibbs BF, Bardelli M, Rugg L, Fasler-Kan E, Varani L, Sumbayev VV. *Int J Biochem Cell Biol* 2015, **59**, 11-20.
- Coradeghini, R., Gioria, S., García, C.P., Nativio, P., Franchini, F., Gilliland, D., Ponti, J., and Rossi, F. *Toxicol Lett* 2013, **217**, 205-216.
- Pabst, C., Krosch, J., Fares, I., Boucher, G., Ruel, R., Marinier, A., Lemieux, S., Hébert, 4., Sauvageau, G. *Nat Methods* 2014, **11**, 436-442.
- Fasler-Kan, E., Barteneva, N., Ketterer, S., Wunderlich, K., Huwyler, J., Gyga, D., Flammer, J., Meyer, P. *Int J Interferon, Cytokine and Mediator research*, 2010, **2**, 127-136.
- Hussain, R., Javorfi, T., and Siligardi, G. *J Synchrotron Radiat* 2012, **19**, 132-135.
- Hussain, R., Javorfi, T. and Siligardi, G. *Comprehensive Chiral*. 2012, **8**, 438-448.
- Hussain, R., Benning, K., Myatt, D., Javorfi, T., Longo, E., Rudd, T.R., Pulford, B., and Siligardi, G. *J Synchrotron Radiat* 2015, **22**, 862.
- Midsonai, A., Wien, F., Kernya, L., Lee, Y.-H., Goto, Y., Réfrégiers, M., and Kardos, J. *Proc Natl Acad Sci USA*, 2015, **112**, E3095-103.
- Tietze, F. Enzymic method for quantitative determination of nanogram amounts of total and oxidized glutathione: applications to mammalian blood and other tissues. *Anal Biochem* 1969, **27**, 502-522.
- Calzolari, L., Gilliland, D., Garcia, C. P., Rossi, F. *J Chromatogr A* 2011, **1218**, 4234-4239.
- Setyawati, M.I., Kutty, R. V., Leong, D. T. *Small* 2016, **12**, 5601-5611.
- Gonçalves Silva, I., Yasinska, I. M., Sakhnevych, S. S., Fiedler, W., Wellbrock, J., Bardelli, M., Varani, L., Hussain, R., Siligardi, G., Cecccone, G., Berger, S. M., Ushkaryov, Y. A., Gibbs, B. F., Fasler-Kan, E., Sumbayev, V. V. *EBioMedicine*, 2017, **22**, 44-57