



Kent Academic Repository

Yu, Hai, Wan, Simin, Cai, Wenlong, Xu, Ling, Zhou, Xiaobo, Wang, Jin, Wu, Yongpeng, Shu, Feng, Wang, Jiangzhou and Wang, Jianxin (2018) *GPI-Based Secrecy Rate Maximization Beamforming Scheme for Wireless Transmission With AN-Aided Directional Modulation*. IEEE Access, 6 . pp. 12044-12051. ISSN 2169-3536.

Downloaded from

<https://kar.kent.ac.uk/66691/> The University of Kent's Academic Repository KAR

The version of record is available from

<https://doi.org/10.1109/ACCESS.2018.2812180>

This document version

Publisher pdf

DOI for this version

Licence for this version

UNSPECIFIED

Additional information

Versions of research works

Versions of Record

If this version is the version of record, it is the same as the published version available on the publisher's web site. Cite as the published version.

Author Accepted Manuscripts

If this document is identified as the Author Accepted Manuscript it is the version after peer review but before type setting, copy editing or publisher branding. Cite as Surname, Initial. (Year) 'Title of article'. To be published in *Title of Journal*, Volume and issue numbers [peer-reviewed accepted version]. Available at: DOI or URL (Accessed: date).

Enquiries

If you have questions about this document contact ResearchSupport@kent.ac.uk. Please include the URL of the record in KAR. If you believe that your, or a third party's rights have been compromised through this document please see our [Take Down policy](https://www.kent.ac.uk/guides/kar-the-kent-academic-repository#policies) (available from <https://www.kent.ac.uk/guides/kar-the-kent-academic-repository#policies>).

Received January 28, 2018, accepted February 25, 2018, date of publication March 5, 2018, date of current version March 16, 2018.

Digital Object Identifier 10.1109/ACCESS.2018.2812180

GPI-Based Secrecy Rate Maximization Beamforming Scheme for Wireless Transmission With AN-Aided Directional Modulation

HAI YU¹, SIMIN WAN¹, WENLONG CAI², LING XU¹, XIAOBO ZHOU¹, JIN WANG¹,
YONGPENG WU³, (Senior Member, IEEE), FENG SHU^{1,4},
JIANGZHOU WANG⁵, (Fellow, IEEE), AND JIANXIN WANG¹

¹School of Electronic and Optical Engineering, Nanjing University of Science and Technology, Nanjing 210094, China

²Faculty of National Key Laboratory of Science and Technology on Aerospace Intelligence Control, Beijing Aerospace Automatic Control Institute, Beijing 100854, China

³Shanghai Key Laboratory of Navigation and Location-Based Services, Shanghai Jiao Tong University, Minhang 200240, China

⁴College of Computer and Information Sciences, Fujian Agriculture and Forestry University, Fuzhou 350002, China

⁵School of Engineering and Digital Arts, University of Kent, Canterbury CT2 7NT, U.K.

Corresponding author: Feng Shu (shufeng0101@163.com)

This work was supported in part by the National Natural Science Foundation of China under Grant 61771244, Grant 61702258, Grant 61472190, Grant 61501238, and Grant 61602245, in part by the China Postdoctoral Science Foundation under Grant 2016M591852, in part by the Postdoctoral Research Funding Program of Jiangsu Province under Grant 1601257C, in part by the Natural Science Foundation of Jiangsu Province under Grant BK20150791, and in part by the Open Research Fund of National Mobile Communications Research Laboratory, Southeast University, China under Grant 2013D02.

ABSTRACT In a directional modulation network, a general power iterative (GPI) based beamforming scheme is proposed to maximize the secrecy rate (SR), where there are two optimization variables required to be optimized. The first one is the useful precoding vector of transmitting confidential messages to the desired user while the second one is the artificial noise (AN) projection matrix of forcing more AN to eavesdroppers. In such a secure network, the paramount problem is how to design or optimize the two optimization variables by different criteria. To maximize the SR (Max-SR), an alternatively iterative structure (AIS) is established between the AN projection matrix and the precoding vector for confidential messages. To choose a good initial value of iteration process of GPI, the proposed Max-SR method can readily double its convergence speed compared to the random choice of initial value. With only four iterations, it may rapidly converge to its rate ceil. From simulation results, it follows that the SR performance of the proposed AIS of GPI-based Max-SR is much better than those of conventional leakage-based and null-space projection methods in the medium and large signal-to-noise ratio (SNR) regions, and its achievable SR performance gain gradually increases as SNR increases.

INDEX TERMS Secrecy rate, artificial noise, directional modulation, general power iterative, alternatively iterative structure.

I. INTRODUCTION

In the recent decade, physical-layer security in wireless networks, as a new tool to provide an incremental safeguard of confidential message over conventional cryptography, has drawn tremendous research attention and interests from both academia and industry [1]–[11]. In [1], the author's seminal research work has established the channel model and found the tradeoff curve between the transmission rate and the data equivocation seen by the wire-tapper. More importantly, the author also proved that reliable transmission at rates up to C , is possible in approximately perfect secrecy. As a

physical layer secure transmit technique suitable for line-of-propagation (LoP) scenario, directional modulation (DM) has made great progresses in many aspects with the aid of artificial noise (AN) and antenna array beamforming [12]–[19]. To enhance security, the symbol-level precoder in [13] was presented by using the concept of constructive interference in directional modulation with the goal of reducing the energy consumption at transmitter. In the presence of direction measurement error, Devaney [17] and Marengo and Gruber [18] designed three new robust DM synthesis methods for three different application

scenarios: single-desired user, multi-desired user broadcasting, multi-desired user MIMO by fully making use of the property of direction measurement error. Compared with conventional non-robust methods, like null-space projection (NSP) [16], [20], the proposed robust methods actually harvests an appealing rate gain and almost an order-of-magnitude bit error rate (BER) performance improvement along desired directions. The works above only present an investigation on conventional DM with only direction-dependent property. However, if eavesdropper lies on the same direction from as the desired user, and its distance from the DM transmitter is different from the distance from the desired user to the DM transmitter, then it can still intercept the confidential messages successfully. This is the existing intrinsic secure problem for the conventional DM networks. To address the serious secure issue, recently, Colton and Kirsch [21] and Colton *et al* [22] proposed an original concept of secure and precise wireless transmission. In their works, the confidential messages are transmitted to the desired position precisely and securely. If eavesdropper is outside the small area around the desired position and locates in the same direction as the desired direction, it can not intercept the confidential messages successfully due to AN corruption and frequency random property. However, in this paper, we focus still on how to maximize the SR for conventional DM networks via GPI algorithm.

However, in a three-node directional modulation network, what is the maximum achievable secrecy rate in the absence of direction estimation error? This is an open NP-hard problem. In the following, we will solve the problem via a combination of general power iterative (GPI) method [23] and alternatively iterative structure (AIS). From simulation results, we find that the proposed GPI-based AIS can achieve an obvious secrecy rate (SR) performance gain compared to conventional NSP and leakage-based methods in the medium and large SNR regions. Our main contributions are summarized as follows:

- 1) In line-of-sight (LoS) scenarios, such as mmWave communications (massive MIMO), internet of things (IoT), unmanned aerial vehicle (UAV) and satellite communications, we propose a general power iterative (GPI) scheme in DM system to maximize secrecy rate (SR), which is shown to be much better than conventional NSP and leakage-based methods in terms of SR.
- 2) To accelerate the convergence rate of our proposed method, the leakage-based precoding vector and AN projection matrix are chosen to be the initial values instead of random generating. From simulation results, it follows that the new initial values can greatly reduce the number of iterations, and doubles the convergence rate compared to the random ones. This means that a good choice of initial values leads to a dramatic reduction in computational amount of the proposed method.

The remainder is organized as follows: Section II describes the system model. An AIS of maximizing secrecy rate (Max-SR) based on GPI with aided AN is proposed in

Section III. Section IV presents the simulation results and complexity analysis. Finally, we draw conclusions in Section V.

Notations: Throughout the paper, matrices, vectors, and scalars are denoted by letters of bold upper case, bold lower case, and lower case, respectively. Signs $(\cdot)^T$, $(\cdot)^*$ and $(\cdot)^H$ denote transpose, conjugate, and conjugate transpose, respectively. Notation $\mathbb{E}\{\cdot\}$ stands for the expectation operation. Matrices \mathbf{I}_N denotes the $N \times N$ identity matrix and $\mathbf{0}_{M \times N}$ denotes $M \times N$ matrix of all zeros. $\text{tr}(\cdot)$ denotes matrix trace. Operation \otimes denotes the Kronecker product of two matrices [24].

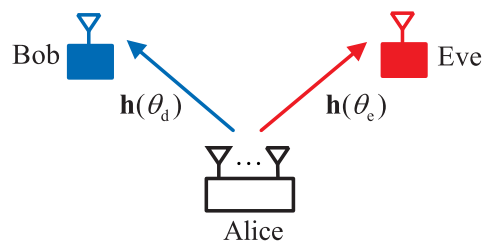


FIGURE 1. Directional modulation network.

II. SYSTEM MODEL

Fig. 1 sketches a diagram block of directional modulation (DM) network consisting of one base station (BS, Alice) equipped with N antennas, one desired node (Bob) and one eavesdropping node (Eve). Here, it is assumed that both desired node and eavesdropping node are employed with single antenna and BS employs an N -element uniformly spaced linear array. Due to its directional property, DM usually works in LoP channel. By introducing the precoding vector of confidential messages and AN projection matrix at transmitter, the transmit baseband signal from antenna array of BS is of the form

$$\mathbf{s} = \beta_1 \sqrt{P_s} \mathbf{v}_d x + \alpha \beta_2 \sqrt{P_s} \mathbf{P}_{AN} \mathbf{z}, \quad (1)$$

where x is the confidential message with $\mathbb{E}\{x^H x\} = 1$ and $\mathbf{z} \in \mathbb{C}^{N \times 1}$ denotes the AN vector of obeying complex Gaussian distribution $\mathcal{CN}(0, \mathbf{I}_{N-1})$. P_s denotes the total transmit power, β_1 and β_2 stand for the power allocation (PA) factors of confidential message and AN with $\beta_1^2 + \beta_2^2 = 1$. $\mathbf{v}_d \in \mathbb{C}^{N \times 1}$ denotes the transmit beamforming vector to align the confidential message to desired direction, $\mathbf{v}_d^H \mathbf{v}_d = 1$. $\mathbf{P}_{AN} \in \mathbb{C}^{N \times (N-1)}$ is the projection matrix, α normalizes $\mathbf{P}_{AN} \mathbf{z}$ such that $\alpha^2 \mathbb{E}\{\text{Tr}[\mathbf{P}_{AN} \mathbf{z} \mathbf{z}^H \mathbf{P}_{AN}^H]\} = 1$.

After experiencing the LoP channel, the received signal along direction θ is given by

$$\begin{aligned} y(\theta) &= \mathbf{h}^H(\theta) \mathbf{s} + n_r \\ &= \beta_1 \sqrt{P_s} \mathbf{h}^H(\theta) \mathbf{v}_d x + \alpha \beta_2 \sqrt{P_s} \mathbf{h}^H(\theta) \mathbf{P}_{AN} \mathbf{z} + n_r, \end{aligned} \quad (2)$$

where n_r is additive white Gaussian noise (AWGN) with $n_r \sim \mathcal{CN}(0, \sigma_r^2)$, $\mathbf{h}(\theta) \in \mathbb{C}^{N \times 1}$ is the normalized steering vector defined by $\mathbf{h}(\theta) = \sqrt{N}^{-1} [\exp(j2\pi \Psi_\theta(1)), \dots, \exp(j2\pi \Psi_\theta(N))]^T$, and the phase function $\Psi_\theta(n)$ along

direction θ is denoted as $\Psi_\theta(n) \triangleq -[n - (N + 1)/2]d \cos \theta \lambda^{-1}$, ($n = 1, 2, \dots, N$), where n indexes the elements of transmit antenna array, d denotes the spacing of two adjacent antennas, and λ is the wavelength of the carrier. The receive signals at Bob and Eve are written as

$$y(\theta_d) = \beta_1 \sqrt{P_s} \mathbf{h}^H(\theta_d) \mathbf{v}_d x + \alpha \beta_2 \sqrt{P_s} \mathbf{h}^H(\theta_d) \mathbf{P}_{AN} \mathbf{z} + n_d, \quad (3)$$

and

$$y(\theta_e) = \beta_1 \sqrt{P_s} \mathbf{h}^H(\theta_e) \mathbf{v}_d x + \alpha \beta_2 \sqrt{P_s} \mathbf{h}^H(\theta_e) \mathbf{P}_{AN} \mathbf{z} + n_e, \quad (4)$$

where $n_d \sim \mathcal{CN}(0, \sigma_d^2)$ and $n_e \sim \mathcal{CN}(0, \sigma_e^2)$ represent the noise at Bob and Eve. With the help of some classic estimation algorithms such as Capon's method, MUSIC and ESPRIT, the DM transmitter in Fig. 1 can obtain the direction knowledge of eavesdroppers and desired users. Without loss of generality, it is assumed that the variances of σ_r^2 , σ_d^2 , and σ_e^2 are equal, i.e., $\sigma_r^2 = \sigma_d^2 = \sigma_e^2 = \sigma^2$.

To derive the SR, the achievable rates of Bob and Eve, $R(\theta_d)$ and $R(\theta_e)$ are defined as follows

$$R(\theta_d) = \log_2 \left(1 + \frac{\beta_1^2 P_s \mathbf{h}^H(\theta_d) \mathbf{v}_d \mathbf{v}_d^H \mathbf{h}(\theta_d)}{\sigma_d^2 + \alpha^2 \beta_2^2 P_s \mathbf{h}^H(\theta_d) \mathbf{P}_{AN} \mathbf{P}_{AN}^H \mathbf{h}(\theta_d)} \right), \quad (5)$$

and

$$R(\theta_e) = \log_2 \left(1 + \frac{\beta_1^2 P_s \mathbf{h}^H(\theta_e) \mathbf{v}_d \mathbf{v}_d^H \mathbf{h}(\theta_e)}{\sigma_e^2 + \alpha^2 \beta_2^2 P_s \mathbf{h}^H(\theta_e) \mathbf{P}_{AN} \mathbf{P}_{AN}^H \mathbf{h}(\theta_e)} \right), \quad (6)$$

Then, the SR $R_s(\mathbf{v}_d, \mathbf{P}_{AN})$ is defined as follows

$$\begin{aligned} R_s(\mathbf{v}_d, \mathbf{P}_{AN}) &= \max\{0, R(\theta_d) - R(\theta_e)\} \\ &= \max\left\{0, \log_2 \left(\frac{\mathbf{v}_d^H (\mathbf{H}_d + A_d \mathbf{I}_N) \mathbf{v}_d}{\mathbf{v}_d^H (\mathbf{H}_e + A_e \mathbf{I}_N) \mathbf{v}_d} \times B \right) \right\}, \end{aligned} \quad (7)$$

where $\mathbf{H}_d \triangleq \mathbf{h}_d \mathbf{h}_d^H$, $\mathbf{H}_e \triangleq \mathbf{h}_e \mathbf{h}_e^H$,

$$A_d = \alpha^2 \beta_2^2 \beta_1^{-2} \mathbf{h}^H(\theta_d) \mathbf{P}_{AN} \mathbf{P}_{AN}^H \mathbf{h}(\theta_d) + \sigma^2 (\beta_1^2 P_s)^{-1}, \quad (8)$$

$$A_e = \alpha^2 \beta_2^2 \beta_1^{-2} \mathbf{h}^H(\theta_e) \mathbf{P}_{AN} \mathbf{P}_{AN}^H \mathbf{h}(\theta_e) + \sigma^2 (\beta_1^2 P_s)^{-1}, \quad (9)$$

and

$$B = \frac{\mathbf{h}^H(\theta_e) \mathbf{P}_{AN} \mathbf{P}_{AN}^H \mathbf{h}(\theta_e) + \sigma^2 (\alpha^2 \beta_2^2 P_s)^{-1}}{\mathbf{h}^H(\theta_d) \mathbf{P}_{AN} \mathbf{P}_{AN}^H \mathbf{h}(\theta_d) + \sigma^2 (\alpha^2 \beta_2^2 P_s)^{-1}}. \quad (10)$$

The RS defined in (7) should be larger than or equal to zero. If it is less than zero, then the eavesdropper will get more mutual information than the desired user. This is not desired in a secure system. However, the second term on right hand side of (7) can be less than zero sometimes, i.e.,

$$\log_2 \left(\frac{\mathbf{v}_d^H (\mathbf{H}_d + A_d \mathbf{I}_N) \mathbf{v}_d}{\mathbf{v}_d^H (\mathbf{H}_e + A_e \mathbf{I}_N) \mathbf{v}_d} \times B \right) < 0 \quad (11)$$

if the eavesdropper is closer to the DM transmitter than the desired user. Thus, the operation max in RS given by (7) should be kept such that the SR is larger than or equal to zero. In what follows, we will maximize the SR by optimizing the beamforming vector \mathbf{v}_d of confidential messages and the projection matrix \mathbf{P}_{AN} of AN, which can be casted as

$$\begin{aligned} (\text{P1}) : \quad & \max_{\mathbf{v}_d, \mathbf{P}_{AN}} R_s(\mathbf{v}_d, \mathbf{P}_{AN}) \\ & \text{subject to } \mathbf{v}_d^H \mathbf{v}_d = 1, \quad \text{Tr}[\mathbf{P}_{AN} \mathbf{P}_{AN}^H] = \alpha^{-2}. \end{aligned} \quad (12)$$

Obviously, the above optimization problem is NP-hard, and it is hard to be solved directly or find a closed-form solution to the above problem. The objective function in (12) as shown in (7) is divided into a sum of two non-convex functions of variables \mathbf{v}_d , and \mathbf{P}_{AN} . This means that it is still a non-convex function. Thus, we make a conclusion that the optimization problem in (12) is a nonlinear non-convex optimization.

III. PROPOSED ITERATIVE ALGORITHM TO DESIGN BEAMFORMING VECTOR \mathbf{v}_d AND PROJECTION MATRIX \mathbf{P}_{AN}

Since the joint optimization \mathbf{v}_d and \mathbf{P}_{AN} in (12) is too complicated, we divided it into two mutual coupling subproblems and construct an iterative structure between them. By fixing the beamforming vector \mathbf{v}_d , the optimal \mathbf{P}_{AN} is solved by utilizing the GPI algorithm [23]. For given projection matrix \mathbf{P}_{AN} , the optimal \mathbf{v}_d is derived according to generalized Rayleigh-Ritz ratio in [24]. This forms an alternatively iterative structure. The Max-SR method outputs the beamforming vector \mathbf{v}_d and projection matrix \mathbf{P}_{AN} by repeatedly applying the GPI in [23].

A. OPTIMIZE \mathbf{P}_{AN} FOR FIXED \mathbf{v}_d

If the beamforming vector \mathbf{v}_d in (12) is fixed, then the optimization problem (12) can be reduced to

$$\begin{aligned} (\text{P1.1}) : \quad & \max_{\mathbf{P}_{AN}} R_s(\text{fixed } \mathbf{v}_d, \mathbf{P}_{AN}) \\ & \text{subject to } \text{Tr}[\mathbf{P}_{AN} \mathbf{P}_{AN}^H] = \alpha^{-2}. \end{aligned} \quad (13)$$

The cost function $R_s(\text{fixed } \mathbf{v}_d, \mathbf{P}_{AN})$ is rewritten as

$$\begin{aligned} R_s &= \log_2 \left(\frac{\text{Tr}(\mathbf{P}_{AN}^H \mathbf{B}_d \mathbf{P}_{AN})}{\text{Tr}(\mathbf{P}_{AN}^H \mathbf{B}_e \mathbf{P}_{AN})} \times \frac{\text{Tr}(\mathbf{P}_{AN}^H \mathbf{C}_e \mathbf{P}_{AN})}{\text{Tr}(\mathbf{P}_{AN}^H \mathbf{C}_d \mathbf{P}_{AN})} \right) \\ &= \log_2 \left(\frac{\mathbf{w}^H (\mathbf{I}_{N-1} \otimes \mathbf{B}_d) \mathbf{w}}{\mathbf{w}^H (\mathbf{I}_{N-1} \otimes \mathbf{B}_e) \mathbf{w}} \times \frac{\mathbf{w}^H (\mathbf{I}_{N-1} \otimes \mathbf{C}_e) \mathbf{w}}{\mathbf{w}^H (\mathbf{I}_{N-1} \otimes \mathbf{C}_d) \mathbf{w}} \right), \end{aligned} \quad (14)$$

where $\mathbf{w} \triangleq \text{vec}(\mathbf{P}_{AN}) \in \mathbb{C}^{N(N-1) \times 1}$,

$$\mathbf{B}_d = \frac{\beta_2^2}{\beta_1^2} \mathbf{H}_d + \left(\frac{\sigma^2}{\beta_1^2 P_s} + \mathbf{h}^H(\theta_d) \mathbf{v}_d \mathbf{v}_d^H \mathbf{h}(\theta_d) \right) \mathbf{I}_N, \quad (15)$$

$$\mathbf{B}_e = \frac{\beta_2^2}{\beta_1^2} \mathbf{H}_e + \left(\frac{\sigma^2}{\beta_1^2 P_s} + \mathbf{h}^H(\theta_e) \mathbf{v}_d \mathbf{v}_d^H \mathbf{h}(\theta_e) \right) \mathbf{I}_N, \quad (16)$$

$\mathbf{C}_d = \mathbf{H}_d + \sigma^2 (\beta_2^2 P_s)^{-1} \mathbf{I}_N$, and $\mathbf{C}_e = \mathbf{H}_e + \sigma^2 (\beta_2^2 P_s)^{-1} \mathbf{I}_N$.

Consider that shrinking or stretching \mathbf{P}_{AN} does not change the ratio value as shown in (14), the problem (P1.1) is

equivalent to

$$(P1.2) : \max_{\mathbf{w}} \frac{\mathbf{w}^H (\mathbf{I}_{N-1} \otimes \mathbf{B}_d) \mathbf{w}}{\mathbf{w}^H (\mathbf{I}_{N-1} \otimes \mathbf{B}_e) \mathbf{w}} \times \frac{\mathbf{w}^H (\mathbf{I}_{N-1} \otimes \mathbf{C}_e) \mathbf{w}}{\mathbf{w}^H (\mathbf{I}_{N-1} \otimes \mathbf{C}_d) \mathbf{w}}. \quad (17)$$

Since (17) is a non-convex quadratic fractional function, $(\mathbf{I}_{N-1} \otimes \mathbf{B}_d)$, $(\mathbf{I}_{N-1} \otimes \mathbf{B}_e)$, $(\mathbf{I}_{N-1} \otimes \mathbf{C}_d)$ and $(\mathbf{I}_{N-1} \otimes \mathbf{C}_e)$ are $N(N-1) \times N(N-1)$ positive semi-definite matrices. \mathbf{w} can be solved by utilizing GPI algorithm in [23]. Then, \mathbf{P}_{AN} is able to be reconstructed from \mathbf{w} .

B. OPTIMIZE \mathbf{v}_d FOR FIXED \mathbf{P}_{AN}

If the AN projection matrix \mathbf{P}_{AN} in (12) is fixed, the optimization problem (12) is simplified to

$$(P1.3) : \max_{\mathbf{v}_d} R_s(\mathbf{v}_d, \text{fixed } \mathbf{P}_{AN}) \\ \text{subject to } \mathbf{v}_d^H \mathbf{v}_d = 1 \quad (18)$$

Observing (7), we find that above optimization problem is equivalent to

$$(P1.4) : \max_{\mathbf{v}_d} \frac{\mathbf{v}_d^H (\mathbf{H}_d + A_d \mathbf{I}_N) \mathbf{v}_d}{\mathbf{v}_d^H (\mathbf{H}_e + A_e \mathbf{I}_N) \mathbf{v}_d} \\ \text{subject to } \mathbf{v}_d^H \mathbf{v}_d = 1 \quad (19)$$

Actually, this is a generalized Rayleigh-Ritz ratio problem and the optimal \mathbf{v}_d is the eigenvector corresponding to the largest eigenvalue of the matrix

$$(\mathbf{H}_e + A_e \mathbf{I}_N)^{-1} (\mathbf{H}_d + A_d \mathbf{I}_N). \quad (20)$$

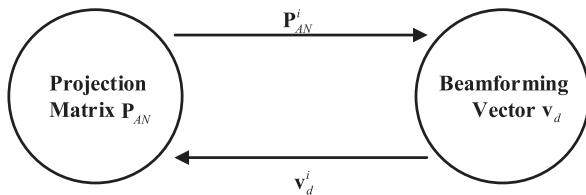


FIGURE 2. Schematic diagram of AIS.

C. INITIALIZATION OF \mathbf{P}_{AN} AND \mathbf{v}_d

Based on the two previous subsections, we propose an AIS by alternatively solving \mathbf{P}_{AN} and \mathbf{v}_d to further improve secrecy rate R_s as shown in Fig. 2. The basic idea is to apply the two steps in Subsections A and B individually and repeatedly until the SR converges. The detailed process is as follows. Firstly, we take the initial values of \mathbf{P}_{AN} and \mathbf{v}_d being the associated eigen-vectors of the largest eigenvalues of (23) and (25), respectively. Then, we compute \mathbf{P}_{AN} by utilizing GPI algorithm in [23] for a given fixed \mathbf{v}_d . Subsequently, \mathbf{v}_d is chosen to be the associated eigen-vectors of the largest eigenvalues of matrix(20) under the condition \mathbf{P}_{AN} is fixed. We repeat the process until the termination condition is satisfied.

Generally, the convergence rate of the iterative algorithm in Fig. 2 depends intimately on the the initial value. In what flows, we focus on the initialization of \mathbf{P}_{AN} and \mathbf{v}_d using the leakage concept in accordance with (3) and (4).

From the aspect of interfering the eavesdropper, the AN along direction θ_e should be viewed a useful component for eavesdropper, and the leakage of AN to the desired direction θ_d is regarded as interference. Hence, the AN-to-leakage-plus-noise ratio (ANLNR) corresponding to \mathbf{P}_{AN} is defined as

$$ANLNR(\mathbf{P}_{AN}) = \frac{\alpha^2 \beta_2^2 P_s \mathbf{h}^H(\theta_e) \mathbf{P}_{AN} \mathbf{P}_{AN}^H \mathbf{h}(\theta_e)}{\alpha^2 \beta_2^2 P_s \mathbf{h}^H(\theta_d) \mathbf{P}_{AN} \mathbf{P}_{AN}^H \mathbf{h}(\theta_d) + \sigma^2} \\ = \frac{\text{Tr}[\mathbf{P}_{AN}^H \mathbf{H}_e \mathbf{P}_{AN}]}{\text{Tr}[\mathbf{P}_{AN}^H (\mathbf{H}_d + \frac{\sigma^2}{\beta_2^2 P_s} \mathbf{I}_N) \mathbf{P}_{AN}]} \quad (21)$$

When maximizing the above cost function $ANLNR(\mathbf{P}_{AN})$, the optimization variable \mathbf{P}_{AN} is a matrix. To solve this problem, we convert matrix \mathbf{P}_{AN} into a column vector \mathbf{w} using vec operation, and the associated cost function becomes

$$ANLNR(\mathbf{w}) = \frac{\mathbf{w}^H (\mathbf{I}_{N-1} \otimes \mathbf{H}_e) \mathbf{w}}{\mathbf{w}^H [\mathbf{I}_{N-1} \otimes (\mathbf{H}_d + \frac{\sigma^2}{\beta_2^2 P_s} \mathbf{I}_N)] \mathbf{w}} \quad (22)$$

Therefore, by maximizing the above objective function $ANLNR(\mathbf{w})$, we have the optimum \mathbf{w} being the eigenvector corresponding to the largest eigenvalues of matrix

$$[\mathbf{I}_{N-1} \otimes (\mathbf{H}_d + \sigma^2 (\beta_2^2 P_s)^{-1} \mathbf{I}_N)]^{-1} (\mathbf{I}_{N-1} \otimes \mathbf{H}_e). \quad (23)$$

This completes the initialization of \mathbf{P}_{AN} .

Similarly, as the desired user hopes that the confidential message x should be leaked to the eavesdropper along the eavesdropper direction θ_e as little as possible, we define the confidential signal-to-leakage-plus-noise ratio (CSLNR) corresponding to \mathbf{v}_d as

$$CSLNR(\mathbf{v}_d) = \frac{\beta_1^2 P_s \mathbf{v}_d^H \mathbf{h}(\theta_d) \mathbf{h}(\theta_d)^H \mathbf{v}_d}{\beta_1^2 P_s \mathbf{v}_d^H \mathbf{h}(\theta_e) \mathbf{h}(\theta_e)^H \mathbf{v}_d + \sigma^2} \\ = \frac{\mathbf{v}_d^H \mathbf{H}_d \mathbf{v}_d}{\mathbf{v}_d^H (\mathbf{H}_e + \frac{\sigma^2}{\beta_1^2 P_s} \mathbf{I}_N) \mathbf{v}_d} \quad (24)$$

Maximizing (24) yields the initial value of \mathbf{v}_d being the eigenvector corresponding to the largest eigenvalues of matrix

$$(\mathbf{H}_e + \sigma^2 (\beta_1^2 P_s)^{-1} \mathbf{I}_N)^{-1} \mathbf{H}_d. \quad (25)$$

Finally, the detailed implementation process of our proposed AIS scheme is summarized in Algorithm 1.

In Algorithm 1, parameter δ is the tolerance factor. To make the above algorithm more clear, the corresponding detailed flow graph is also presented in Fig. 3.

IV. SIMULATION, DISCUSSION, AND COMPLEXITY ANALYSIS

In this section, simulation results are presented to evaluate the performance of the proposed algorithm. The leakage-based method in [25] and NSP method in [20] are used For

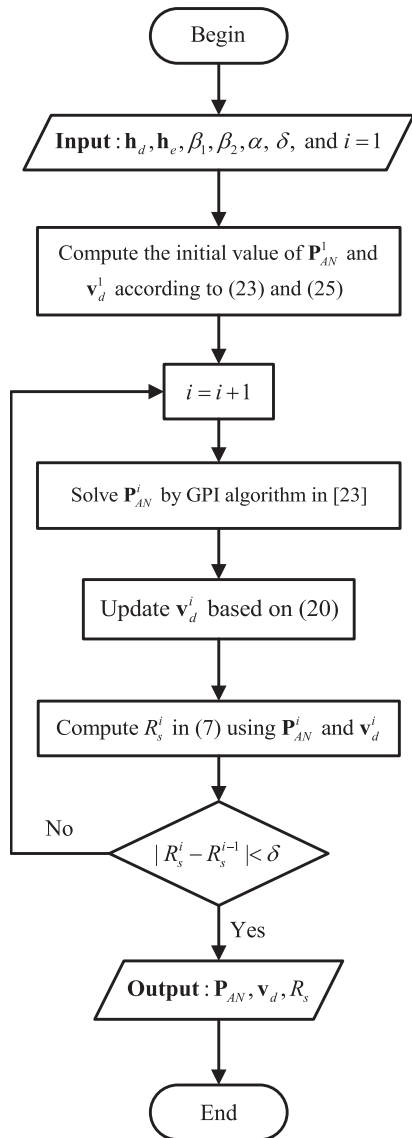


FIGURE 3. Flow graph of our proposed algorithm.

comparison,. The system parameters are chosen as: $N = 8$, PA factors $\beta_1 = \sqrt{0.9}$ and $\beta_2 = \sqrt{0.1}$, $\theta_d = 45^\circ$ and $\theta_e = 70^\circ$, and QPSK.

A. SIMULATION RESULTS AND ANALYSIS

Fig. 4 shows the achievable SR versus the number of iterations between \mathbf{P}_{AN} and \mathbf{v}_d for leakage-based and random initial values, respectively. Here, SNR is chosen to be 10dB. It is seen that the iterative algorithm with leakage-based solution as initialization value converges more rapidly than that with random initialization. As shown in Fig. 4, the former converges to a constant rate after 4 iterations, while the latter requires 7 iterations to converge. And the two initialization methods finally converge to the same SR limit value. This implies that the SLNR initialization can provide a faster convergence speed than the random initialization.

Algorithm 1 Proposed Iterative Algorithm to Solve \mathbf{P}_{AN} and \mathbf{v}_d

Input: $\mathbf{h}_d, \mathbf{h}_e, \beta_1, \beta_2, \alpha$ and δ

Output: $\mathbf{P}_{AN}, \mathbf{v}_d, R_s$

Initialization: $i = 1$, and compute the initial value of \mathbf{P}_{AN}^1 and \mathbf{v}_d^1 by using (23) and (25).

repeat

1. $i = i + 1$.

2. Update \mathbf{P}_{AN}^i utilizing GPI algorithm in [23];

3. Update \mathbf{v}_d^i based on (20);

4. Compute R_s^i in (7) using updated \mathbf{P}_{AN}^i and \mathbf{v}_d^i .

until $|R_s^i - R_s^{i-1}| < \delta$.

return $\mathbf{P}_{AN}, \mathbf{v}_d$ and R_s .

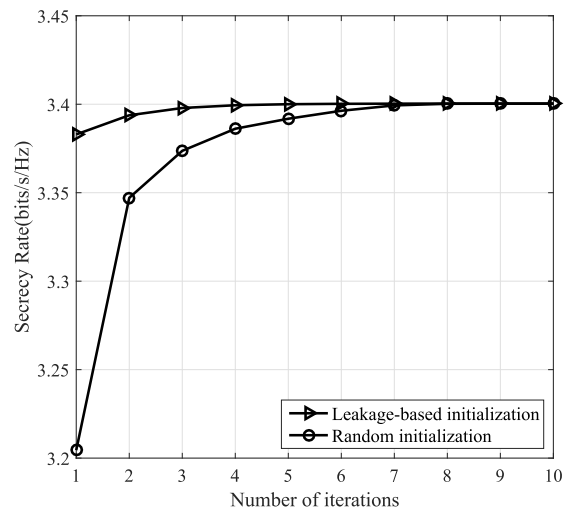


FIGURE 4. Curves of achievable secrecy rate versus the number of iterations (SNR=10dB).

Fig. 5 illustrates the achievable SR versus SNR of the proposed method, leakage-based method in [25] and NSP method in [20]. It can be seen that our proposed method performs better than the remaining two methods in almost all SNR regions. With the increase of SNR, the secrecy rate gain over them achieved by the proposed method show a gradual growth trend. For example, at SNR=15dB, the proposed method attains an approximate ten-percent and twenty-percent rate improvements over leakage and NSP methods, respectively.

Fig. 6 plots the bit error rate (BER) versus SNR of the proposed method, leakage-based method and NSP. All the three methods achieve their best BER performance along the desired direction $\theta_d = 45^\circ$, and a sharp BER performance degradation appears once the desired receiver deviates from the main beam of the desired direction 45° . Both NSP and our proposed method have approximately the same BER performance around the desired direction 45° . The main reason is that the proposed method reduces the effect of artificial noise on the desired direction by maximizing SR. The NSP

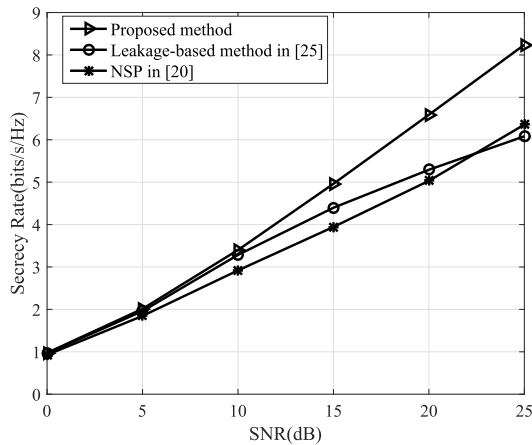


FIGURE 5. Achievable secrecy rate versus SNR of three different methods.

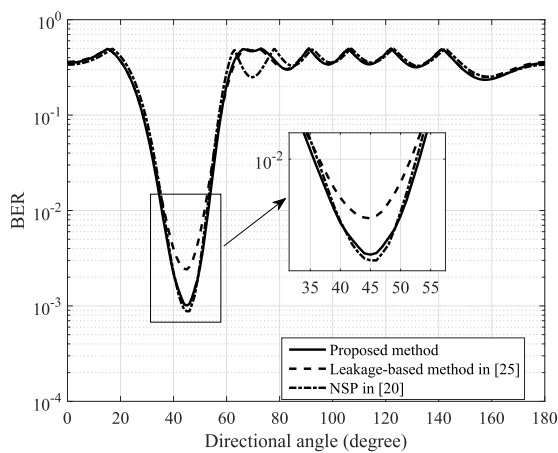


FIGURE 6. Curves of BER versus directional angles of three different methods.

even makes AN vanish in the desired direction. However, the conventional NSP one shows a better BER performance than the proposed method along the eavesdropper direction $\theta_e = 70^\circ$, which means that the confidential messages can be easily intercepted along the direction.

B. COMPLEXITY COMPARISON AND CONVERGENCE ANALYSIS

The complexities of the proposed Max-SR, NSP, and leakage-based methods are $O(I(N^6))$, $O(N^3)$, and $O(N^3)$ floating-point operations (FLOPs), respectively, where I stands for the number of iterations. Our proposed method is due to the fact that the optimization variable $\mathbf{w} \triangleq \text{vec}(\mathbf{P}_{AN})$ in (13) is an $N(N-1)$ -D column vector. Clearly, the proposed method has much higher complexity than NSP and leakage-based methods. Both NSP and leakage-based methods have the same order of complexity.

For the aspect of convergence, we propose two different choices of initial values in Section III: random and leakage-based. From Fig. 4, the former requires 7 iterations to converge the limit and the latter needs only 4 iterations. Clearly, the leakage-based initialization approximately doubles the

convergence rate compared to the random initialization. This means a good initial choice accelerates the convergence of our proposed method.

V. CONCLUSION

In this paper, we have investigated three beamforming schemes including the proposed GPI-based Max-SR, leakage, and NSP. Compared to the last two methods based on NSP and leakage, the proposed GPI-based Max-SR method achieved a substantial SR improvement in the medium and large SNR regions. In particular, as SNR increases, the SR performance gain increases. Additionally, by an appropriate choice of initialization value, for example, with the leakage-based solution as initial value of GPI, the proposed method required only 4 iterations to converge to the limit value of SR. The random initialization requires 7 iterations. Thus, the leakage-based initialization saves about 40-percent computational amount over random one. In the coming future, the proposed scheme will be potentially applied to the following diverse applications such as mmWave communications (massive MIMO), IoT, UAV, satellite communications, and flying ad-hoc networks.

REFERENCES

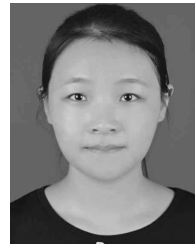
- [1] A. D. Wyner, "The wire-tap channel," *Bell Syst. Tech. J.*, vol. 54, no. 8, pp. 1355–1387, Oct. 1975.
- [2] N. Zhao, F. R. Yu, M. Li, Q. Yan, and V. C. Leung, "Physical layer security issues in interference-alignment-based wireless networks," *IEEE Commun. Mag.*, vol. 54, no. 8, pp. 162–168, Aug. 2016.
- [3] S. Yan, X. Zhou, N. Yang, B. He, and T. D. Abhayapala, "Artificial-noise-aided secure transmission in wiretap channels with transmitter-side correlation," *IEEE Trans. Wireless Commun.*, vol. 15, no. 12, pp. 8286–8297, Dec. 2016.
- [4] Y. Zou, B. Champagne, W. P. Zhu, and L. Hanzo, "Relay-selection improves the security-reliability trade-off in cognitive radio systems," *IEEE Trans. Commun.*, vol. 63, no. 1, pp. 215–228, Jan. 2015.
- [5] B. Li, Z. Fei, Z. Chu, and Y. Zhang, "Secure transmission for heterogeneous cellular networks with wireless information and power transfer," *IEEE Syst. J.*, to be published.
- [6] H.-M. Wang, Q. Yin, and X.-G. Xia, "Distributed beamforming for physical-layer security of two-way relay networks," *IEEE Trans. Signal Process.*, vol. 60, no. 7, pp. 3532–3545, Jul. 2012.
- [7] T. Lv, H. Gao, and S. Yang, "Secrecy transmit beamforming for heterogeneous networks," *IEEE J. Sel. Areas Commun.*, vol. 33, no. 6, pp. 1154–1170, Jun. 2015.
- [8] M. F. Hanif, L.-N. Tran, M. Juntti, and S. Glisic, "On linear precoding strategies for secrecy rate maximization in multiuser multiantenna wireless networks," *IEEE Trans. Signal Process.*, vol. 62, no. 14, pp. 3536–3551, Jul. 2014.
- [9] G. Han, L. Liu, W. Zhang, and S. Chan, "A hierarchical jammed-area mapping service for ubiquitous communication in smart communities," *IEEE Commun. Mag.*, vol. 56, no. 1, pp. 92–98, Jan. 2018.
- [10] G. Han, X. Yang, L. Liu, and W. Zhang, "A joint energy replenishing and data collection algorithm in wireless rechargeable sensor networks," *IEEE Internet Thing J.*, to be published.
- [11] G. Han, X. Yang, L. Liu, W. Zhang, and M. Guizani, "A disaster management-oriented path planning for mobile anchor-based localization in wireless sensor networks," *IEEE Trans. Emerg. Topics Comput.*, to be published.
- [12] M. Alodeh et al. (Mar. 2017). "Symbol-level and multicast precoding for multiuser multiantenna downlink: A survey, classification and challenges." [Online]. Available: <https://arxiv.org/abs/1703.03617>
- [13] A. Kalantari, M. Soltanalian, S. Maleki, S. Chatzinotas, and B. Ottersten, "Directional modulation via symbol-level precoding: A way to enhance security," *IEEE J. Sel. Topics Signal Process.*, vol. 10, no. 8, pp. 1478–1493, Dec. 2016.

- [14] A. Babakhani, D. B. Rutledge, and A. Hajimiri, "Transmitter architectures based on near-field direct antenna modulation," *IEEE J. Solid-State Circuits*, vol. 43, no. 12, pp. 2674–2692, Dec. 2008.
- [15] M. P. Daly and J. T. Bernhard, "Directional modulation technique for phased arrays," *IEEE Trans. Antennas Propag.*, vol. 57, no. 9, pp. 2633–2640, Sep. 2009.
- [16] Y. Ding and V. F. Fusco, "A vector approach for the analysis and synthesis of directional modulation transmitters," *IEEE Trans. Antennas Propag.*, vol. 62, no. 1, pp. 361–370, Jan. 2014.
- [17] J. S. Hu, F. Shu, and J. Li, "Robust synthesis method for secure directional modulation with imperfect direction angle," *IEEE Commun. Lett.*, vol. 20, no. 6, pp. 1084–1087, Jun. 2016.
- [18] F. Shu, X. Wu, J. Li, R. Chen, and B. Vucetic, "Robust synthesis scheme for secure multi-beam directional modulation in broadcasting systems," *IEEE Access*, vol. 4, pp. 6614–6623, Oct. 2016.
- [19] F. Shu, W. Zhu, X. Zhou, J. Li, and J. Lu, "Robust secure transmission of using main-lobe-integration based leakage beamforming in directional modulation MU-MIMO systems," *IEEE Syst. J.*, to be published.
- [20] Y. Ding and V. Fusco, "Orthogonal vector approach for synthesis of multi-beam directional modulation transmitters," *IEEE Antennas Wireless Propag. Lett.*, vol. 14, pp. 1330–1333, Feb. 2015.
- [21] J. Hu, S. Yan, F. Shu, J. Wang, J. Li, and Y. Zhang, "Artificial-noise-aided secure transmission with directional modulation based on random frequency diverse arrays," *IEEE Access*, vol. 5, pp. 1658–1667, 2017.
- [22] F. Shu, X. Wu, J. Hu, R. Chen, and J. Wang. (Apr. 2017). "Secure precise wireless transmission with random-subcarrier-selection-based directional modulation transmit antenna array." [Online]. Available: <https://arxiv.org/abs/1704.07996>
- [23] N. Lee, H. J. Yang, and J. Chun, "Achievable sum-rate maximizing AF relay beamforming scheme in two-way relay channels," in *Proc. IEEE Int. Conf. Commun. Workshops (ICC Workshops)*, May 2008, pp. 300–305.
- [24] R. A. Horn and C. R. Johnson, *Matrix Analysis*. Cambridge, U.K.: Cambridge Univ. Press, 2013.
- [25] M. Sadek, A. Tarighat, and A. H. Sayed, "A leakage-based precoding scheme for downlink multi-user MIMO channels," *IEEE Trans. Wireless Commun.*, vol. 6, no. 5, pp. 1711–1721, May 2007.



communications, and physical layer security.

WENLONG CAI received the Ph.D. degree from the School of Electronic and Information Engineering, Beihang University, China, in 2016. He is currently with the Faculty of National Key Laboratory of Science and Technology on Aerospace Intelligence Control, Beijing Aerospace Automatic Control Institute. His research interests include information theory and signal processing methods for wireless communications, such as massive-MIMO communications, millimeter wave



LING XU received the B.S. degree from the Nanjing University of Science and Technology, China, in 2017, where she is currently pursuing the M.S. degree with the School of Electronic and Optical Engineering. Her research interests include wireless communication and mobile networks.



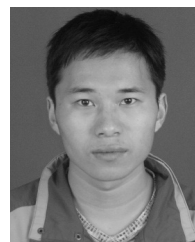
HAI YU received the B.S. degree from the Nanjing University of Science and Technology, Nanjing, China, in 2000, where he is currently pursuing the Ph.D. degree with the School of Electronic and Optical Engineering. His research interests include wireless communications and signal processing.



XIAOBO ZHOU received the B.S. and M.S. degrees from Anhui Agriculture University, Hefei, China, in 2007, and Anhui University, Hefei, China, in 2010, respectively. He is currently pursuing the Ph.D. degree with the School of Electronic and Optical Engineering, Nanjing University of Science and Technology, Nanjing, China. His research interests include wireless communications and signal processing.



SIMIN WAN received the B.S. degree from Jiangxi Normal University, Nanchang, China, in 2016. She is currently pursuing the M.S. degree with the School of Electronic and Optical Engineering, Nanjing University of Science and Technology, China. She is currently with the School of Electronic and Optical Engineering, Nanjing University of Science and Technology. Her research interests include wireless communication and mobile networks.



JIN WANG received the B.S. degree from the Nanjing University of Science and Technology, Nanjing, China, in 2012, where he is currently pursuing the Ph.D. degree with the School of Electronic and Optical Engineering. His research interests include wireless communications and signal processing.



YONGPENG WU (S'08–M'13–SM'17) received the B.S. degree in telecommunication engineering from Wuhan University, Wuhan, China, in 2007, and the Ph.D. degree in communication and signal processing from the National Mobile Communications Research Laboratory, Southeast University, Nanjing, China, in 2013. He was a Senior Research Fellow with the Institute for Communications Engineering, Technical University of Munich, Germany, and the Humboldt Research

Fellow and the Senior Research Fellow with the Institute for Digital Communications, University Erlangen-Nurnberg, Germany. He is currently a Research Professor (tenure-track) with the Shanghai Key Laboratory of Navigation and location-based services, Shanghai Jiao Tong University, China. During his doctoral studies, he conducted cooperative research with the Department of Electrical Engineering, Missouri University of Science and Technology, USA. His research interests include massive MIMO/MIMO systems, physical layer security, signal processing for wireless communications, and multivariate statistical theory.



JIANGZHOU WANG (F'17) is currently the Head of the School of Engineering and Digital Arts and a Professor of Telecommunications with the University of Kent, Canterbury, U.K. He has authored over 200 papers in international journals and conferences in the areas of wireless mobile communications and three books. He was an IEEE Distinguished Lecturer from 2013 to 2014. He is an IET Fellow. He received the Best Paper Award from the 2012 IEEE GLOBECOM. He was the

Technical Program Chair of the 2013 IEEE WCNC in Shanghai and the Executive Chair of the 2015 IEEE ICC in London. He serves/served as an Editor for a number of international journals, including an Editor of the IEEE Transactions on Communications from 1998 to 2013 and a Guest Editor of the IEEE Journal on Selected Areas in Communications and the *IEEE Communications Magazine*. He is currently an Editor of the Science China Information Science.



FENG SHU was born in 1973. He received the B.S., M.S., and Ph.D. degrees from the Fuyang Teachers College, Fuyang, China, in 1994, Xidian University, Xian, China, in 1997, and Southeast University, Nanjing, in 2002, respectively. From 2009 to 2010, he held a Visiting Post-Doctoral position with The University of Texas at Dallas, Richardson, TX, USA. In 2005, he joined the School of Electronic and Optical Engineering, Nanjing University of Science and Technology,

Nanjing, China, where he is currently a Professor and a Supervisor of Ph.D. and graduate students. He is also with Fujian Agriculture and Forestry University and received with Mingjian Scholar Chair Professor at Fujian Province. He has authored about 200 papers, of which over 100 are in archival journals, including over 40 papers on IEEE Journals and over 70 SCI-indexed papers. He holds four Chinese patents. His research interests include wireless networks, wireless location, and array signal processing.



JIANXIN WANG received the Degree in electronic and information engineering from the Nanjing University of Science and Technology, Nanjing, China, and the M.S. and Ph.D. degrees in 1987 and 1999, respectively. He was a Visiting Researcher with the Institute of Telecommunications, University of Stuttgart, Germany, in 2000, 2011 and 2012, respectively. Since 1987, he has been with the School of Electronic and Optical Engineering, Nanjing University of Science and

Technology, as a Teaching Assistant, a Lecturer, and an Associate Professor, and since 2001 as a Professor. His research interests include communications signal processing and software radio.

...