



Kent Academic Repository

Griffin, Darren K., Larkin, Denis M., O'Connor, Rebecca E. and Romanov, Michael N. (2023) *Dinosaurs.**. MDPI, Basel, Switzerland online encyclopedia. ISSN 2673-8392.

Downloaded from

<https://kar.kent.ac.uk/99415/> The University of Kent's Academic Repository KAR

The version of record is available from

<https://encyclopedia.pub/entry/39796>

This document version

Accessible Version

DOI for this version

Licence for this version

UNSPECIFIED

Additional information

Encyclopedia Entry 39796. This entry is adapted from <https://doi.org/10.3390/ani13010106>

Versions of research works

Versions of Record

If this version is the version of record, it is the same as the published version available on the publisher's web site. Cite as the published version.

Author Accepted Manuscripts

If this document is identified as the Author Accepted Manuscript it is the version after peer review but before type setting, copy editing or publisher branding. Cite as Surname, Initial. (Year) 'Title of article'. To be published in *Title of Journal*, Volume and issue numbers [peer-reviewed accepted version]. Available at: DOI or URL (Accessed: date).

Enquiries

If you have questions about this document contact ResearchSupport@kent.ac.uk. Please include the URL of the record in KAR. If you believe that your, or a third party's rights have been compromised through this document please see our [Take Down policy](https://www.kent.ac.uk/guides/kar-the-kent-academic-repository#policies) (available from <https://www.kent.ac.uk/guides/kar-the-kent-academic-repository#policies>).

Dinosaurs

[Edit \(/user/entry/revise/39796\)](#)
[+ Upload a video](#)

This entry is adapted from [10.3390/ani13010106](https://doi.org/10.3390/ani13010106) (<https://doi.org/10.3390/ani13010106>)

[_ \(/login?\)](#)
[_ \(/login?\)](#)
[_target_path=https://encyclopedia.pub/entry/39796](https://encyclopedia.pub/entry/39796)
[_target_path=https://encyclopedia.pub/entry/39796](https://encyclopedia.pub/entry/39796)

0

0

0

[\(entry/download_pdf/b7b897d2dace73fc83dab77aaf1acdef\)](#)

According to *Britannica*, dinosaurs are described as “*Triceratops*, contemporary birds, their most recent common ancestor and all of their descendants.” However, for biologists, it could be simpler to picture dinosaurs as reptiles with hind limbs held erect beneath the trunk, similar to how mammals’ hind limbs are held.

dinosaurs birds reptiles chromosome karyotype

[Information](#)
[Table of Contents](#)

1. Introduction

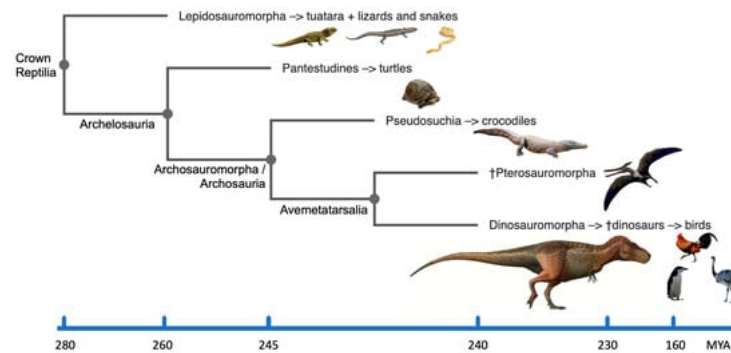
Scholarly Community Home (/) Entry (/search/) Journal (<https://www.mdpi.com/journal/encyclopedia>) Books (/book/list) Sciplayer (/video/subject) Encyclopedia (/) **Encyclopedia** (/) The question of the origin of reptiles, birds and their relationship to extinct dinosaurs has challenged many generations of biologists; it also continues to interest the lay public. In recent years, this interest has increased due to new paleontological findings and developments in the field of genomics (e.g., [1 (<https://www.mdpi.com/2076-2615/13/1/106#B1-animals-13-00106>), 2 (<https://www.mdpi.com/2076-2615/13/1/106#B2-animals-13-00106>), 3 (<https://www.mdpi.com/2076-2615/13/1/106#B3-animals-13-00106>), 4 (<https://www.mdpi.com/2076-2615/13/1/106#B4-animals-13-00106>)] has been pervasive in the scientific literature, as well as fiction, film, television, popular culture and the media. However, this scientific dogma has undergone a fundamental revision in recent times; dinosaurs are now thought to be reptile survivors of the most recent extinction event through their evolution into modern birds (e.g., [1 (<https://www.mdpi.com/2076-2615/13/1/106#B1-animals-13-00106>), 2 (<https://www.mdpi.com/2076-2615/13/1/106#B2-animals-13-00106>)]). In other words, birds are both reptiles and dinosaurs.

A karyotype represents a map of the genome of interest and every genome sequence assembly would benefit from an accurate cytogenomic map [5 (<https://www.mdpi.com/2076-2615/13/1/106#B5-animals-13-00106>)]. However, while we can do this directly in extant species by sampling live material, the chromosomal composition of extinct dinosaurs can only be derived by inference. This conclusion can be reached by examining the whole genome chromosome-level assemblies (CLA) of extant species [5 (<https://www.mdpi.com/2076-2615/13/1/106#B5-animals-13-00106>)]. With information about several species’ CLAs at our disposal, comparative genomics is much more practical in silico [6 (<https://www.mdpi.com/2076-2615/13/1/106#B6-animals-13-00106>)]. While the auxiliary method of cross-species fluorescence in situ hybridization (zoo-FISH) can uncover further chromosome rearrangements that are difficult to detect using conventional karyotyping (e.g., [7 (<https://www.mdpi.com/2076-2615/13/1/106#B7-animals-13-00106>), 8 (<https://www.mdpi.com/2076-2615/13/1/106#B8-animals-13-00106>), 9 (<https://www.mdpi.com/2076-2615/13/1/106#B9-animals-13-00106>), 10 (<https://www.mdpi.com/2076-2615/13/1/106#B10-animals-13-00106>)]), comparative genomics enables us to outline the genome structure of less well-studied species (e.g., [8 (<https://www.mdpi.com/2076-2615/13/1/106#B8-animals-13-00106>), 11 (<https://www.mdpi.com/2076-2615/13/1/106#B11-animals-13-00106>), 12 (<https://www.mdpi.com/2076-2615/13/1/106#B12-animals-13-00106>)] and reveal the chromosome rearrangements that led to each species’ distinct karyotype (e.g., [10 (<https://www.mdpi.com/2076-2615/13/1/106#B10-animals-13-00106>)] using a reference species as a benchmark, e.g., chickens. The relevance and genomic correlates of such chromosome constituents as evolutionary breakpoint regions (EBRs) and homologous synteny blocks (HSBs) that are features of chromosome evolution [6 (<https://www.mdpi.com/2076-2615/13/1/106#B6-animals-13-00106>)], as well as the mechanisms behind chromosomal breakage and fusion, can all be addressed with the use of CLAs. Given the prevalence of genomics in modern scientific enquiry, cytogenetics (or, more precisely, cytogenomics) is not only a descriptive discipline but also offers a conceptual framework for the organization of any genome. It also provides an original framework for delineating genome–phenome relationships.

2. Reptilia: Their Phylogeny and Karyotypes

The crown group Reptilia [13 (<https://www.mdpi.com/2076-2615/13/1/106#B13-animals-13-00106>)] incorporates extinct and existing clades of reptiles, dinosaurs and birds (**Figure 1**). In particular, it encompasses the diapsid reptiles including the Lepidosauria (tuatara, lizards and snakes) and the Archosauria (extinct dinosaurs, pterosaurs, crocodylians and birds); the latter having originated ~250 million years ago (MYA) [14 (<https://www.mdpi.com/2076-2615/13/1/106#B14-animals-13-00106>)]. The divergence of synapsids (mammals and their extinct ancestors) in one branch, and anapsids (turtles) and diapsids (other ([/entry/33674](https://www.mdpi.com/2076-2615/13/1/106#B14-animals-13-00106)) reptiles and birds) in the other, occurred about 310–350 MYA. Evolutionarily, birds represent a monophyletic group of homoeothermic reptiles and are believed to have arisen from theropod dinosaurs about 150 MYA (e.g., [14 (<https://www.mdpi.com/2076-2615/13/1/106#B14-animals-13-00106>), 15 (<https://www.mdpi.com/2076-2615/13/1/106#B15-animals-13-00106>), 16 (<https://www.mdpi.com/2076-2615/13/1/106#B16-animals-13-00106>)]). *Archaeopteryx* discovered from the late Jurassic (~150 MYA) is recognized as one of the earliest birds. Fossils of most orders of modern birds appear in the early part of the Cenozoic era (65–0 MYA). According to **mitochondrial DNA** ([/entry/525](https://www.mdpi.com/2076-2615/13/1/106#B16-animals-13-00106)) comparisons with extant reptiles, birds are most closely linked to crocodylians, and the divergence between the two lineages is thought to have happened between 210 and 250 MYA (reviewed in [17 (<https://www.mdpi.com/2076-2615/13/1/106#B17-animals-13-00106>)]). The order Testudines

(turtles, tortoises and terrapins) were separated from the Lepidosauria and the Archosauria in the traditional phylogeny because they were thought to be the only survivors of a presumed early anapsid reptile group. The results from molecular phylogeny data estimated from the nucleotide sequences of complete mitochondrial genomes and nuclear genes suggest that turtles should be grouped within the Archelosauria along with crocodylians and birds, while squamates (scaled reptiles including snakes and lizards) are classified into a different clade of Lepidosauria (e.g., [17 (<https://www.mdpi.com/2076-2615/13/1/106#B17-animals-13-00106>),18 (<https://www.mdpi.com/2076-2615/13/1/106#B18-animals-13-00106>),19 (<https://www.mdpi.com/2076-2615/13/1/106#B19-animals-13-00106>),20 (<https://www.mdpi.com/2076-2615/13/1/106#B20-animals-13-00106>),21 (<https://www.mdpi.com/2076-2615/13/1/106#B21-animals-13-00106>)]); **Figure 1**).



(/media/item/202301/63b6642528cc3animals-13-00106-g001-550.jpg)

Figure 1. A simplified cladogram of the crown group Reptilia for major evolutionary groups including dinosaurs, birds and reptiles, based on [22 (<https://www.mdpi.com/2076-2615/13/1/106#B22-animals-13-00106>),23 (<https://www.mdpi.com/2076-2615/13/1/106#B23-animals-13-00106>),24 (<https://www.mdpi.com/2076-2615/13/1/106#B24-animals-13-00106>)] and plotted using the Phylo.io webtool [25 (<https://www.mdpi.com/2076-2615/13/1/106#B25-animals-13-00106>)]. † extinct groups. Time scale is not linear.

Similar to birds, two main chromosomal components of the karyotypes of snakes, turtles, lizards and tuatara (but not crocodylians) are the macro- and microchromosomes. Snakes have a limited spectrum ([/entry/34128](entry/34128)) of karyotypic variation. The diploid number $2n = 36$, including 8 pairs of macro- and 10 pairs of microchromosomes, is the most prevalent karyotype in snakes (reviewed in [17 (<https://www.mdpi.com/2076-2615/13/1/106#B17-animals-13-00106>)]). Lizards also have a low karyotypic variation, mostly with 32–44 chromosomes (e.g., [26 (<https://www.mdpi.com/2076-2615/13/1/106#B26-animals-13-00106>),27 (<https://www.mdpi.com/2076-2615/13/1/106#B27-animals-13-00106>)]) and the extremes being 16 [28 (<https://www.mdpi.com/2076-2615/13/1/106#B28-animals-13-00106>)] and 62 chromosomes [29 (<https://www.mdpi.com/2076-2615/13/1/106#B29-animals-13-00106>)]. The diploid number in the lizard *Anolis monticola* is 48 chromosomes, including 24 macro- and 24 microchromosomes. The fission of chromosomes has been demonstrated in conjunction ([/entry/32300](entry/32300)), with lower diploid numbers [30 (<https://www.mdpi.com/2076-2615/13/1/106#B30-animals-13-00106>)]. The karyotype of the indigenous New Zealand lizard genus *Sphenodon* (tuatara) has not changed for at least one million years. It has 36 chromosomes, with 14 pairs of macrochromosomes and 4 pairs of microchromosomes. The similarity ([/entry/32739](entry/32739)) of the karyotypes of *Sphenodon* and most Testudines (turtles) points to an ancestral karyotype with a complement of 14 pairs of macrochromosomes and varying numbers of microchromosome pairs [31 (<https://www.mdpi.com/2076-2615/13/1/106#B31-animals-13-00106>)]. The chromosome number of most crocodylians has long been known [32 (<https://www.mdpi.com/2076-2615/13/1/106#B32-animals-13-00106>)]; the American alligator (*Alligator mississippiensis*) karyotype ($2n$) consists of 32 macrochromosomes, but notably no microchromosomes (in contrast to other reptiles including birds, e.g., [33 (<https://www.mdpi.com/2076-2615/13/1/106#B33-animals-13-00106>)]). This peculiar feature, unique among reptiles, suggests a derived karyotype arising as a result of wholesale microchromosomal fusion, probably of single origin (given the small number of monophyletic species in which it is observed). Why crocodylians underwent this change and other reptiles did not is unclear.

Using cDNA clones of functional reptile genes and zoo-FISH, Matsuda et al. [17 (<https://www.mdpi.com/2076-2615/13/1/106#B17-animals-13-00106>)] created comparative cytogenetic maps of the Japanese four-striped rat snake (*Elaphe quadrivirgata*) and the Chinese soft-shelled turtle (*Pelodiscus sinensis*). The six biggest chromosomes were found to be near-identical between the chicken and turtle, indicating that chromosome homology ([/entry/28634](entry/28634)) was well conserved between the two species. However, compared to the turtle, the snake's homology to the chicken chromosomes is lower. The chicken Z chromosome shares conserved synteny with the turtle 6q and the snake 2p chromosomes. These findings imply that conserved sequence blocks have survived during the evolution of Testudines and Archosauria in the genomes of turtles and birds. The lineage of snakes has a karyotype with a number of large-sized macrochromosomes and fewer microchromosomes due to a greater frequency of interchromosomal rearrangements that happened between the macrochromosomes and also between macro- and microchromosomes [17 (<https://www.mdpi.com/2076-2615/13/1/106#B17-animals-13-00106>)]. The suggested that the molecular phylogenetic links between the three genera are supported by the higher conserved synteny in the comparison between the chicken and turtle than in the comparison between the chicken and snake [18 (<https://www.mdpi.com/2076-2615/13/1/106#B18-animals-13-00106>),20 (<https://www.mdpi.com/2076-2615/13/1/106#B20-animals-13-00106>)].

In the 2000s, bacterial artificial chromosome (BAC) libraries became available for the genomes of five reptilian species, American alligator (*Alligator mississippiensis*), garter snake (*Thamnophis sirtalis*), tuatara (*Sphenodon punctatus*), painted turtle (*Chrysemys picta*) and gila monster (*Heloderma suspectum*), which represent all five major lineages of extant reptiles [33 (<https://www.mdpi.com/2076-2615/13/1/106#B33-animals-13-00106>),34 (<https://www.mdpi.com/2076-2615/13/1/106#B34-animals-13-00106>)]. The green anole lizard (*Anolis carolinensis*) was the first reptilian target species for which the genome sequence and CLA were produced [35 (<https://www.mdpi.com/2076-2615/13/1/106#B35-animals-13-00106>)], with the painted turtle [36 (<https://www.mdpi.com/2076-2615/13/1/106#B36-animals-13-00106>)], American alligator [37 (<https://www.mdpi.com/2076-2615/13/1/106#B37-animals-13-00106>)], garter snake [38 (<https://www.mdpi.com/2076-2615/13/1/106#B38-animals-13-00106>)] and a variety of other reptile species having followed. These advances, along with the progress in avian genomics, make ([/entry/27898](entry/27898)) it possible to study the evolutionary relationships and genome history of higher vertebrates (reptiles, birds and mammals) in a broader context [39 (<https://www.mdpi.com/2076-2615/13/1/106#B39-animals-13-00106>)]. Comparative mapping of birds and reptiles sheds additional light on the amniotes' evolutionary history [17 (<https://www.mdpi.com/2076-2615/13/1/106#B17-animals-13-00106>)].

3. Defining Dinosaurs

According to *Britannica* [40 (<https://www.mdpi.com/2076-2615/13/1/106#B40-animals-13-00106>)], dinosaurs are described as “*Triceratops* ([entry/32169](https://www.mdpi.com/2076-2615/13/1/106#B32169)), contemporary birds, their most recent common ancestor and all of their descendants.” However, for biologists, it could be simpler to picture dinosaurs as reptiles with hind limbs held erect beneath the trunk, similar to how mammals’ hind limbs are held. This sets dinosaurs apart from the majority of other reptiles, including lizards and crocodylians, whose legs are often placed to the side. The related evolutionary clades of dinosaurs, birds and reptiles within the crown group Reptilia [13 (<https://www.mdpi.com/2076-2615/13/1/106#B13-animals-13-00106>)] are shown in **Figure 1**. Dinosaurs can therefore be straightforwardly discerned from other animals if its easily identifiable sidelong sister branch of pterosaurs is taken out. With this in mind, dinosaurs are survivors of many extinction events including the most recent Cretaceous–Paleogene (K–Pg) [4 (<https://www.mdpi.com/2076-2615/13/1/106#B4-animals-13-00106>)]. Data combined from molecular cytogenetics and bioinformatics help demonstrate that their adaptability and capacity to survive extinction events may be due, at least in part, to their karyotypic features.

4. Dinosaurian Forefathers and Avian Heirs

The amniote lineage divided into the reptile/bird lineage (diapsids) and the synapsids, which eventually evolved into mammals (and others), ~325 MYA. Over 17,500 diapsid species exist on the planet, the majority of which are birds (~11,000 species). Turtles (Testudines) diverged first (~255 MYA), followed by crocodylians (~ 252 MYA), pterosaurs (~245 MYA) and then true dinosaurs (including birds) ~240 MYA [41 (<https://www.mdpi.com/2076-2615/13/1/106#B41-animals-13-00106>), 42 (<https://www.mdpi.com/2076-2615/13/1/106#B42-animals-13-00106>)]. All of these organisms, including dinosaurs and birds, share a common ancestor (**Figure 1**) that lived 275 MYA. Dinosaur species remained few in number for the following 30 million years, but during the Jurassic period, their numbers, geographic range and body sizes all increased [43 (<https://www.mdpi.com/2076-2615/13/1/106#B43-animals-13-00106>)]. The subsequent 135 million years of dinosaur evolution were remarkable because they were the dominant vertebrates on Earth and manifested an extraordinary diversity of species [1 (<https://www.mdpi.com/2076-2615/13/1/106#B1-animals-13-00106>)]. Amazingly, the dinosaurs survived the catastrophic extinction events of the Carnian–Norian and end-Triassic eras (228 and 201 MYA, respectively). There are currently more than 1000 known species of fossil, with around 30 new species (excluding birds) added each year [44 (<https://www.mdpi.com/2076-2615/13/1/106#B44-animals-13-00106>)].

Usually, the wide diversity and species abundance of dinosaurs is attributed to the extinction of competing species, which allowed the dinosaurs to prosper. However, it has also been suggested that these remarkable levels of abundance and diversity were a result of dinosaur-specific genetic adaptations, which let them outlive other species in hostile habitats. Examples include unusual bone development rates and highly adapted respiration systems [45 (<https://www.mdpi.com/2076-2615/13/1/106#B45-animals-13-00106>)], such as unidirectional respiration [46 (<https://www.mdpi.com/2076-2615/13/1/106#B46-animals-13-00106>)]. Avian species may have evolved successfully due to these types of adaptations; evidence for this may be found in the organization and structure of their genomes.

Multiple bird genome sequencing projects have corrected the important dates of avian diversification, thanks to a revised avian phylogeny based on genome assemblies [47 (<https://www.mdpi.com/2076-2615/13/1/106#B47-animals-13-00106>), 48 (<https://www.mdpi.com/2076-2615/13/1/106#B48-animals-13-00106>)]. When the Neognathae (Galloanserae/Neoaves) and the Palaeognathae (Ratites/Tinamous) split apart, this was the time of the first bird evolutionary divergence occurring around 100 MYA. The second divergence occurred when the Galloanserae (Galliformes and Anseriformes) and the Neoaves split 80 MYA, with the divergence of the Galliformes (landfowl, such as chicken, turkey, quail and pheasant) and the Anseriformes (waterfowl, i.e., geese, ducks and swans) occurring around 66 MYA. A further significant split of the Neoaves into the Columbea (including pigeons) and the Passerea (including songbirds) was earlier in evolutionary time (67–69 MYA). Around the time of these two major divergences and after the K–Pg mass extinction event [3 (<https://www.mdpi.com/2076-2615/13/1/106#B3-animals-13-00106>), 4 (<https://www.mdpi.com/2076-2615/13/1/106#B4-animals-13-00106>)], a total of 36 neoavian lineages evolved due to diversification in a very brief evolutionary period of 10–15 million years, as shown by Jarvis et al. [48 (<https://www.mdpi.com/2076-2615/13/1/106#B48-animals-13-00106>)] and Prum et al. [49 (<https://www.mdpi.com/2076-2615/13/1/106#B49-animals-13-00106>)]. Thus, comparative studies using genomics have revised our understanding of the evolution of dinosaurs, providing fascinating insights into the diversification and the evolution of phenotype [47 (<https://www.mdpi.com/2076-2615/13/1/106#B47-animals-13-00106>), 48 (<https://www.mdpi.com/2076-2615/13/1/106#B48-animals-13-00106>)], and prompting further research of the dinosaur karyotype.

5. Characterizing a Hypothetical Dinosaur Genome Organization

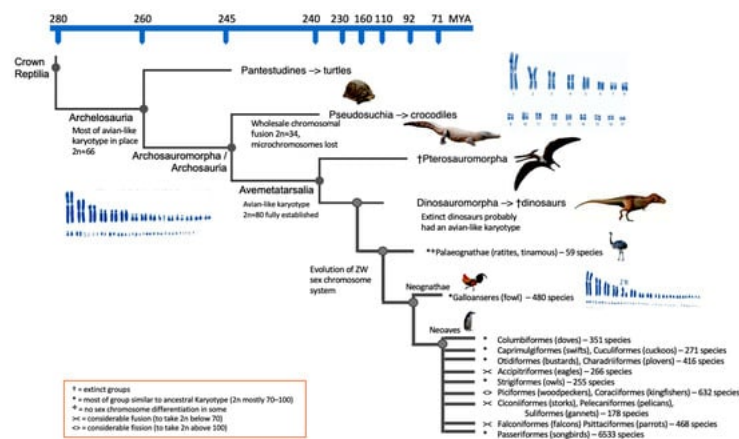
With no intact DNA available from dinosaur fossils, researchers can infer information about extinct dinosaur karyotypes by studying enough avian and reptile CLAs. Romanov et al. [50 (<https://www.mdpi.com/2076-2615/13/1/106#B50-animals-13-00106>)] were able to determine the most likely ancestral karyotype of all birds by aligning (near) chromosome-level assemblies from six extant birds and an outgroup of the *Anolis* lizard. This research strategy revealed that the common avian ancestor had a karyotype comparable to that of a chicken or ratite bird [1 (<https://www.mdpi.com/2076-2615/13/1/106#B1-animals-13-00106>), 50 (<https://www.mdpi.com/2076-2615/13/1/106#B50-animals-13-00106>)], being a bipedal, terrestrial, tiny Jurassic dinosaur with some flight capacity [1 (<https://www.mdpi.com/2076-2615/13/1/106#B1-animals-13-00106>), 51 (<https://www.mdpi.com/2076-2615/13/1/106#B51-animals-13-00106>)]. The next step was to retrace the most likely sequence of rearrangement occurrences that resulted in the avian species’ characteristic karyotypes (e.g., [10 (<https://www.mdpi.com/2076-2615/13/1/106#B10-animals-13-00106>)]). The zebra finch (*Taeniopygia guttata*) and budgerigar (*Melopsittacus undulatus*) were likely **subject** ([/entry/35182](https://www.mdpi.com/2076-2615/13/1/106#B35182)), to the most intra- and interchromosomal changes, while the reconstructed ancestral genome makeup was actually closest to the common chicken karyotype among the birds explored [1 (<https://www.mdpi.com/2076-2615/13/1/106#B1-animals-13-00106>), 50 (<https://www.mdpi.com/2076-2615/13/1/106#B50-animals-13-00106>)]. Damas et al. [52 (<https://www.mdpi.com/2076-2615/13/1/106#B52-animals-13-00106>)] used the method DESCRAMBLER on fragmented genome assemblies to rebuild the ancestral avian karyotype. A thorough examination of the structure of primitive avian chromosomes was conducted around 14 significant nodes in the evolution of birds. These findings elucidated the varying rates of rearrangement that took place throughout bird evolution. Additionally, it enabled the identification of patterns in the distribution of EBRs along the micro- and macrochromosomes.

A similar method was used by O'Connor et al. [53 (<https://www.mdpi.com/2076-2615/13/1/106#B53-animals-13-00106>)] to reproduce the diapsid ancestor's most likely ancestral karyotype. A universally hybridizing BAC FISH probe set was created for this purpose [10 (<https://www.mdpi.com/2076-2615/13/1/106#B10-animals-13-00106>)], which was capable of directly hybridizing across species that diverged hundreds of millions of years ago [54 (<https://www.mdpi.com/2076-2615/13/1/106#B54-animals-13-00106>)]. The BAC probes used in zoo-FISH investigations produced distinctive signals on the chromosomes of anole lizard (*Anolis carolinensis*) and further on those of the red-eared slider (*Trachemys scripta*) and spiny soft-shelled turtle (*Apalone spinifera*). Based on these zoo-FISH examinations, the chromosome rearrangement events might then be anchored from the viewpoint of an ancestral archelosaur (bird–turtle). The chromosomal modifications from the diapsid ancestor through the archelosaur ancestor [55 (<https://www.mdpi.com/2076-2615/13/1/106#B55-animals-13-00106>)] and the theropod lineage, and to birds, including chickens, were thus recreated by merging molecular cytogenetics with bioinformatics data [1 (<https://www.mdpi.com/2076-2615/13/1/106#B1-animals-13-00106>)].

In addition to detecting macro- and microchromosomal homologues, the hybridization of BACs to *Trachemys scripta* ($2n = 50$) and *Anolis carolinensis* ($2n = 36$) metaphases also revealed the ancestral diapsid karyotype (275 MYA) with $2n = 36–46$ and with the ratio of macro- to microchromosomes being approximately 1:1 [1 (<https://www.mdpi.com/2076-2615/13/1/106#B1-animals-13-00106>)], 35 (<https://www.mdpi.com/2076-2615/13/1/106#B35-animals-13-00106>), 56 (<https://www.mdpi.com/2076-2615/13/1/106#B56-animals-13-00106>)]. The majority of the key characteristics linked to a typical bird karyotype were already set in the archelosaur progenitor 255 MYA [1 (<https://www.mdpi.com/2076-2615/13/1/106#B1-animals-13-00106>)], 57 (<https://www.mdpi.com/2076-2615/13/1/106#B57-animals-13-00106>)], which experienced rapid transformation in the preceding 20 million years. We know this because the majority of the *Apalone spinifera* ($2n = 66$) and chicken (i.e., ancestral avian) chromosomes (numbered 1-28 + Z) are perfectly syntenic [1 (<https://www.mdpi.com/2076-2615/13/1/106#B1-animals-13-00106>)]. Studies using chicken chromosome painting on the chromosomes of the painted turtle (*Chrysemys picta*) [58 (<https://www.mdpi.com/2076-2615/13/1/106#B58-animals-13-00106>)], red-eared slider (*Trachemys scripta*; both $2n = 50$) [9 (<https://www.mdpi.com/2076-2615/13/1/106#B9-animals-13-00106>)] and Chinese soft-shelled turtle (*Pelodiscus sinensis*; $2n = 66$) [17 (<https://www.mdpi.com/2076-2615/13/1/106#B17-animals-13-00106>)] further support the hypothesis that macrochromosomes of birds and turtles are syntenic. Given this information, the only parsimonious explanation is that birds and *Pelodiscus sinensis* share a common ancestor in terms of their karyotypic structure, as the number of independent convergent events to achieve the same pattern would be statistically extremely unlikely.

To achieve the common avian karyotype pattern from this (~255 MYA) common archelosaur ancestor, to that present in the majority of the main groups of birds, including the Ratites, Galliformes, Anseriformes, Columbea, Passeriformes and others, only about seven fissions would be required. At the rate of chromosomal change occurring at the time, a complete bird-like karyotype would have most likely formed prior to the emergence of the earliest dinosaurs and pterosaurs ~240 MYA. That is, if the same fission rate that had been present for the preceding 20 million years was maintained for another 15 million years, the early dinosaurs probably had bird-like karyotypes [1 (<https://www.mdpi.com/2076-2615/13/1/106#B1-animals-13-00106>)], 59 (<https://www.mdpi.com/2076-2615/13/1/106#B59-animals-13-00106>)].

The data available therefore strongly imply that not only in most birds, but also with a high degree of certainty, in many, if not most, extinct dinosaurs, the avian chromosomal pattern was maintained mostly unchanged [60 (<https://www.mdpi.com/2076-2615/13/1/106#B60-animals-13-00106>)]. **Figure 2** illustrates this.



(/media/item/202301/63b6642543f35animals-13-00106-g002-550.jpg)

Figure 2. Cladogram of the major evolutionary reptilian groups including dinosaurs and several groups of birds. Likely karyotypic changes given, time scale is not linear.

Related Entries

Microchromosome Organization in Birds (/entry/30520)

Interchromosomal rearrangements involving microchromosomes are rare events in birds. To date, they have been found mostly in Neognathae and Neoaves (e.g., Psittaciformes, Falconiformes, and Cuculiformes), although only a few orders have been analyzed. Hence, cytogenomic studies focusin...

Keywords: avian cytogenomics; microchromosomes; evolution; genome organization; FISH; chromosomal rearrangements

Importance of the Gut Microbiome (/entry/26596)

"Microbiome" refers to microorganisms inhabiting multicellular organisms, from animals to plants. The microbiome is made up of bacteria, archaea, protists, fungi, and viruses. An overview of several species whose gut microbiota have been evaluated.

Keywords: gut microbiota; fish; animal; Birds; Reptiles; Invertebrates; Amphibians