

# Kent Academic Repository

## Full text document (pdf)

### Citation for published version

Neden, Catherine A., Popoola, Adetutu and West, Jonty (2021) Establishing Primary Care Network Placements in a new medical school. In: 49th Annual Scientific Meeting of the Society for Academic Primary Care, 30th June-1st July 2021. (Unpublished)

### DOI

<https://doi.org/10.37361/asm.2021.1.1>

### Link to record in KAR

<https://kar.kent.ac.uk/92023/>

### Document Version

Presentation

#### Copyright & reuse

Content in the Kent Academic Repository is made available for research purposes. Unless otherwise stated all content is protected by copyright and in the absence of an open licence (eg Creative Commons), permissions for further reuse of content should be sought from the publisher, author or other copyright holder.

#### Versions of research

The version in the Kent Academic Repository may differ from the final published version.

Users are advised to check <http://kar.kent.ac.uk> for the status of the paper. **Users should always cite the published version of record.**

#### Enquiries

For any further enquiries regarding the licence status of this document, please contact:

[researchsupport@kent.ac.uk](mailto:researchsupport@kent.ac.uk)

If you believe this document infringes copyright then please contact the KAR admin team with the take-down information provided at <http://kar.kent.ac.uk/contact.html>

# Establishing Primary Care Network Placements in a new medical school

Catherine Neden

Adetutu Popoola

Jonty West

June 2021

# Kent and Medway Medical School (KMMS)

KMMS is one of five new medical schools established to support the expansion of the workforce. The school opened in September 2020 with a first cohort of 108 students.

The KMMS is a joint venture between Canterbury Christ Church University (CCCU) and the University of Kent. As a new medical school, it is partnered with Brighton and Sussex Medical School



\* Disclaimer: KMMS is a new medical school and the BM BS programme is subject to successful progress through the General Medical Council's quality assurance programme.

**KENT AND  
MEDWAY  
MEDICAL  
SCHOOL**

# KMMS Mission is to:

---

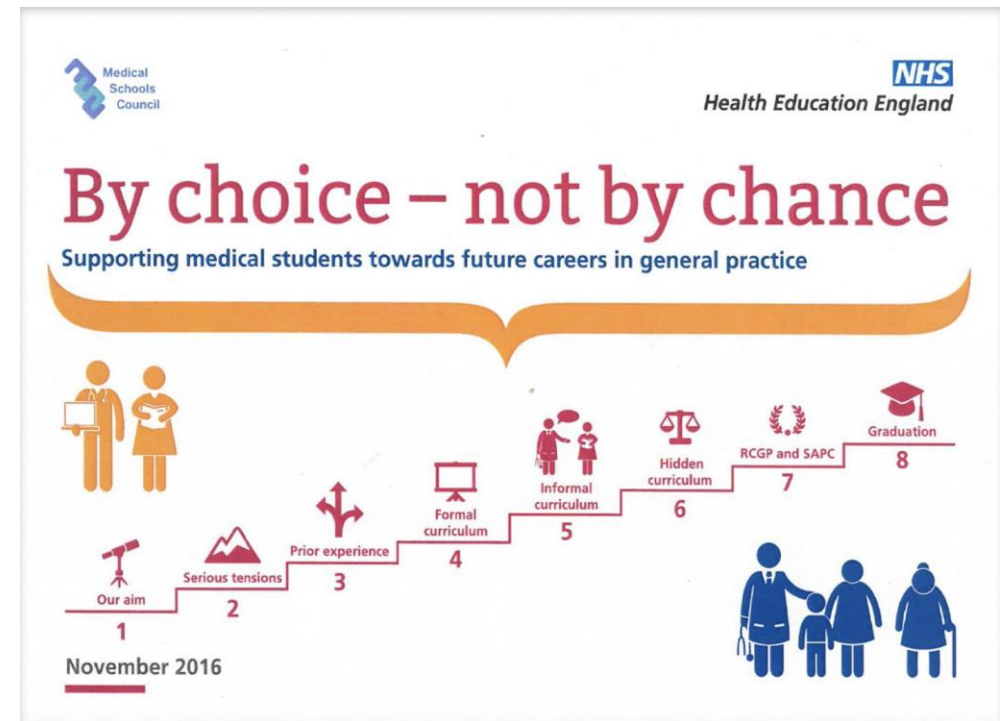
- widen participation in medicine
- address significant health inequalities in Kent and Medway
- provide high-quality placements
- ensure that all our students have significant exposure to primary care, mental health and acute medicine
- have an innovative curriculum



**KENT AND  
MEDWAY  
MEDICAL  
SCHOOL**

# Background

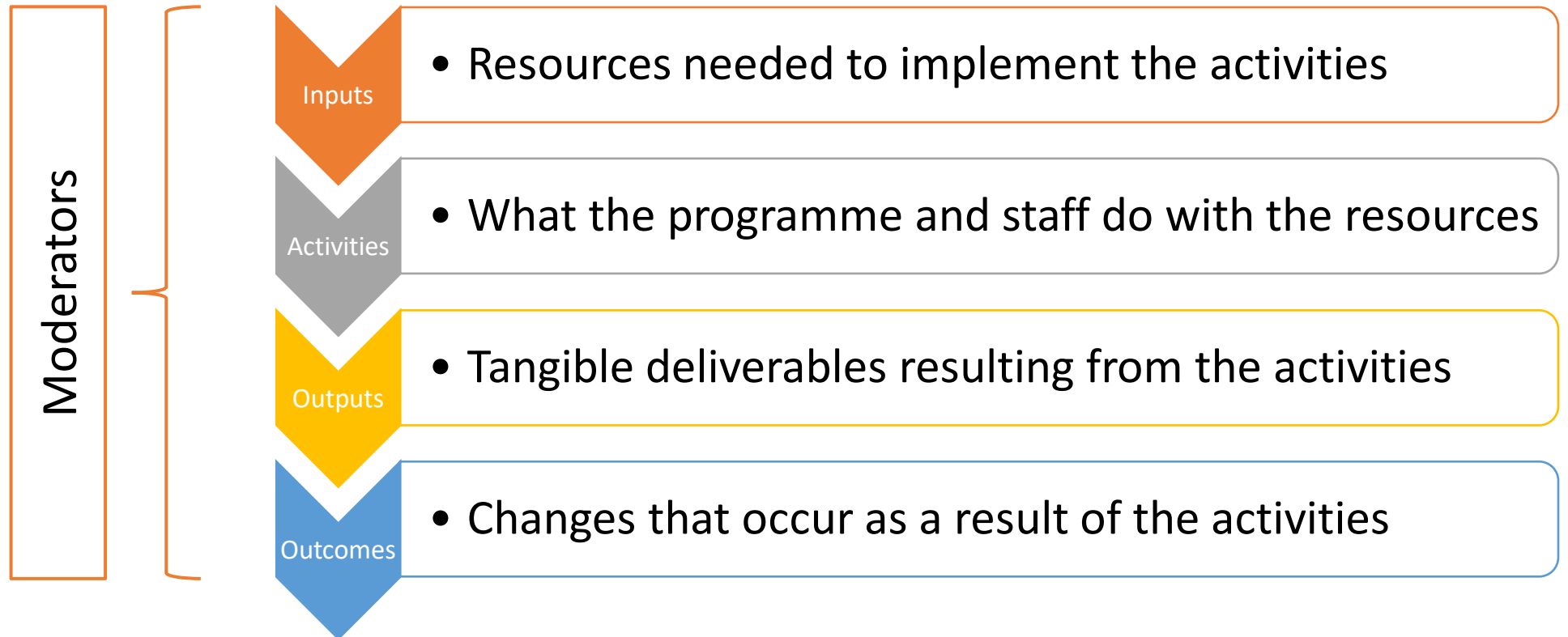
The KMMS programme features early clinical placements in the community, starting with six weeks in year one. These are structured as immersion weeks based in Primary Care Networks (PCNs). Over the course of the five-year programme, 28 weeks are in primary care placements



Policy drivers to support recruitment to General Practice

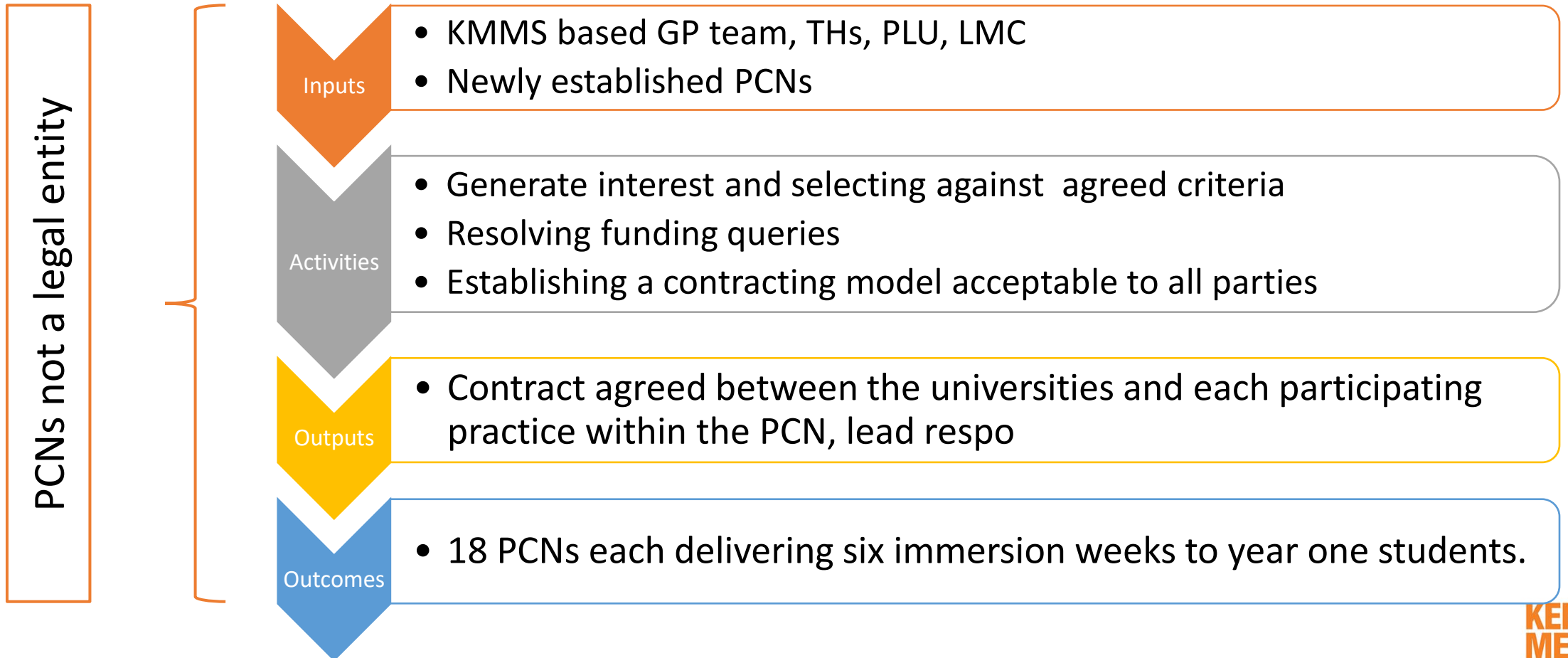
- GMC outcomes for Graduates 2018
- Wass report 2016

# Evaluation of the KMMS Year 1 Primary Care Placements

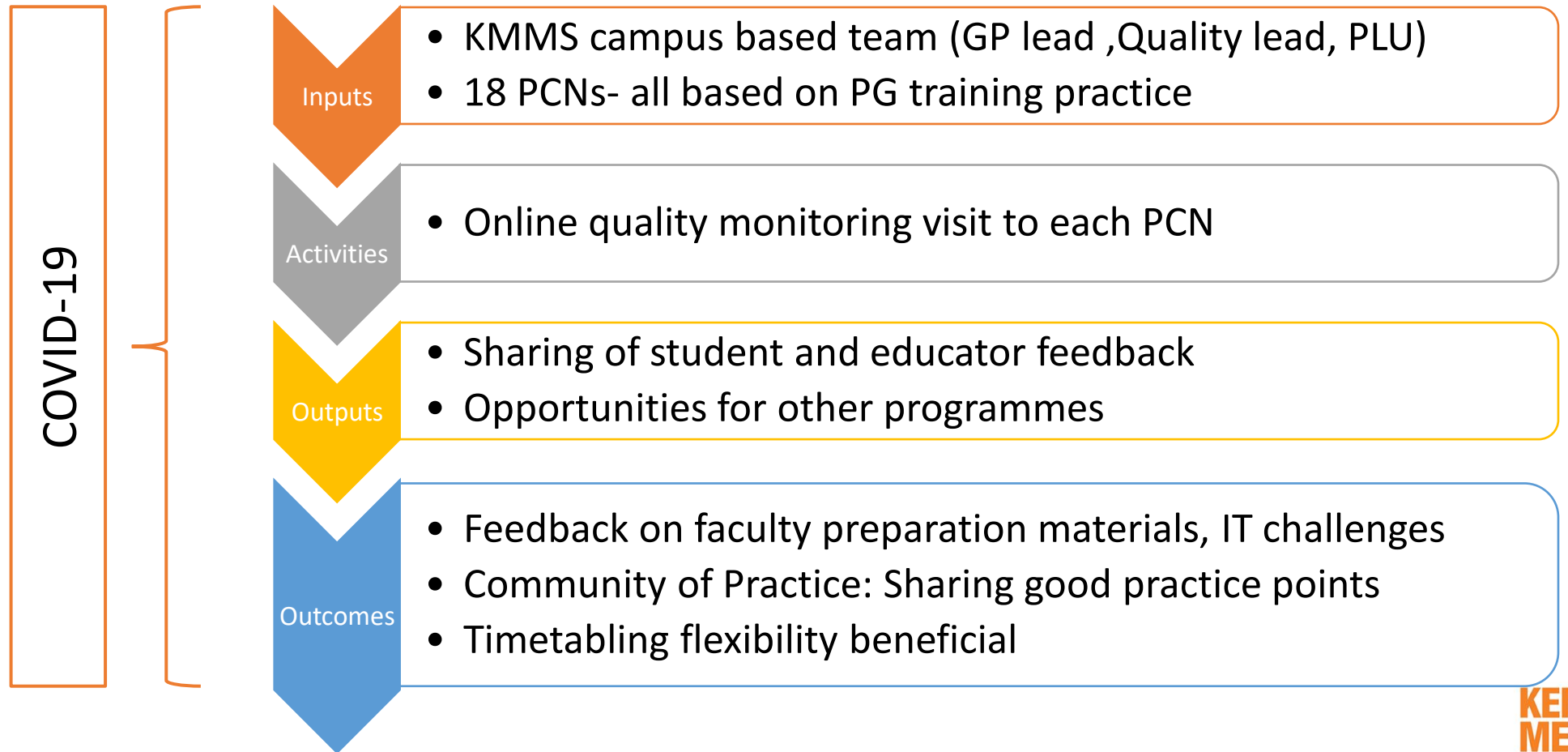


Stakeholder involvement: Training hubs, Local Medical Committee, Practice Learning Unit, PCNs, Community providers, Students

# Setting up the PCN placements

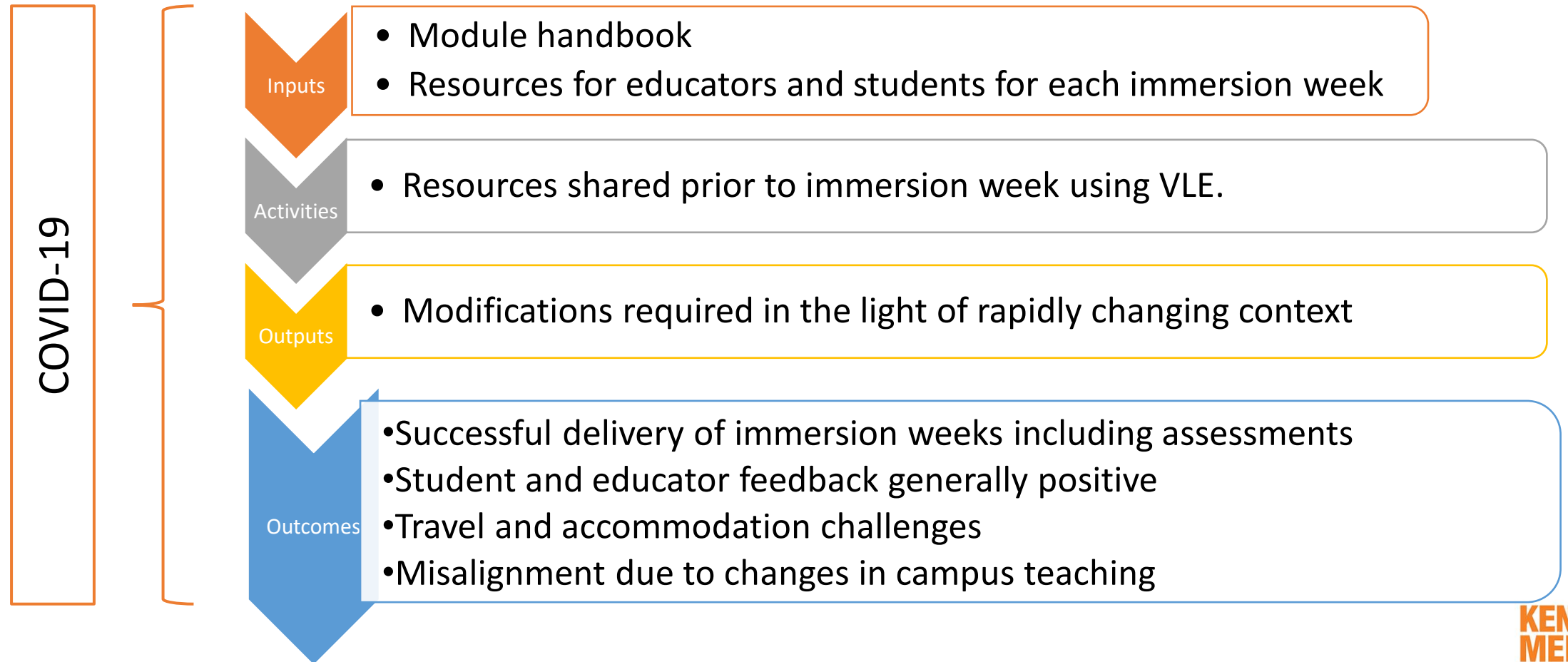


# PCN contract monitoring





# Immersion week delivery of KMMS year 1 Primary Care Placements



# Impact of Covid 19



**KENT AND  
MEDWAY  
MEDICAL  
SCHOOL**



# Discussion

- PCN placements offer unique learning environment including early exposure to clinical practice and also to multi-disciplinary working but with legal complexity
- Timetabling Tension Early exposure to clinical practice vs need for OH clearance and placement allocation
- Placements across the whole of Kent and Medway pose logistic challenges for short immersion week placements
- COVID has provided unexpected challenges as well as learning opportunities related to MDT working and communication skills

# Implications

With a move to place based learning across networks, learning about contracting and quality assurance models may be transferable to other settings.