



# Kent Academic Repository

Allahi, Fahimeh, Taheri, Saeed, Kian, Ramez and Sabet, Ehsan (2020) *Cash-Based Interventions to Enhance Dignity in Persistent Humanitarian Refugee Crises: A System Dynamics Approach*. IEEE Transactions on Engineering Management . pp. 1-18. ISSN 0018-9391.

## Downloaded from

<https://kar.kent.ac.uk/87672/> The University of Kent's Academic Repository KAR

## The version of record is available from

<https://doi.org/10.1109/tem.2020.2982583>

## This document version

Publisher pdf

## DOI for this version

## Licence for this version

CC BY (Attribution)

## Additional information

## Versions of research works

### Versions of Record

If this version is the version of record, it is the same as the published version available on the publisher's web site. Cite as the published version.

### Author Accepted Manuscripts

If this document is identified as the Author Accepted Manuscript it is the version after peer review but before type setting, copy editing or publisher branding. Cite as Surname, Initial. (Year) 'Title of article'. To be published in *Title of Journal*, Volume and issue numbers [peer-reviewed accepted version]. Available at: DOI or URL (Accessed: date).

## Enquiries

If you have questions about this document contact [ResearchSupport@kent.ac.uk](mailto:ResearchSupport@kent.ac.uk). Please include the URL of the record in KAR. If you believe that your, or a third party's rights have been compromised through this document please see our [Take Down policy](https://www.kent.ac.uk/guides/kar-the-kent-academic-repository#policies) (available from <https://www.kent.ac.uk/guides/kar-the-kent-academic-repository#policies>).

# Cash-Based Interventions to Enhance Dignity in Persistent Humanitarian Refugee Crises: A System Dynamics Approach

Fahimeh Allahi , Saeed Taheri , Ramez Kian , and Ehsan Sabet 

**Abstract**—Cash-based interventions (CBIs) as one form of aid have recently received substantial interest from humanitarian organizations in persistent humanitarian crises. This article proposes a system dynamics (SD) approach to study the CBIs' impact factors on all aspects of the beneficiaries' dignity in longstanding refugee crises, such as the case of Syrian refugees in Turkey. Reviewing the humanitarian management literature, we first develop a set of holistic causal loops to better understand the building boxes of refugees' dignity and their interactions. Then, an SD model is proposed and calibrated by field data from humanitarian organizations. The result of CBI amount sensitivity and payment time periods shows that CBIs are significantly more effective in diminishing child labor rates and to improve in health and accommodation service reception by the refugees in short terms, but to be as much effective in longer terms, humanitarian organizations must be more directly contribute to service capacity-building activities that are strategies by the hosting governments and supported by the international bodies, such as EU and UN. Otherwise, long-term or enhanced CBI supports can only lead to accelerated service capacity saturation and thus put extra pressure on already strained services and cause tensions between hosting and refugee communities.

**Index Terms**—Cash-based interventions (CBIs), causal loop model, decision making framework, humanitarian relief, system dynamics (SD).

## I. CASH-BASED INTERVENTIONS (CBIs) IN HUMANITARIAN AID

NATURAL and man-made disasters have increasingly caused famine, illnesses, fatalities, homelessness, economic loss, and human misery around the world [1]–[3]. A disaster is defined as “a sudden, calamitous event that seriously

disrupts the functioning of a community or society and causes human, material, and economic or environmental losses that exceed the ability of a community or society to cope using its own resources” [4]. Since 1990, more than 200 million people have been affected by the direct consequences of natural and man-made disasters, which have become one of the most significant problems of human life [5]–[7]. Currently, among the most man-made disaster-affected regions in the world are the Middle East and North Africa with continuous wars in Iraq, Libya, Syria, and Yemen. This has caused the largest scale of contemporary emigration, including inner displacement of people as well as refugees to other countries. Syria has seen more than 5 million people leave their homeland since the start of the civil war in the country in 2011. Many Syrians sought refuge in neighboring countries, and now over 3.6 million are living in Turkey [8], turning Turkey into the country with the greatest number of refugees in the world [9].

It is essential to help victims immediately after the occurrence of a disaster in various ways [10], [11], such as in-kind assistance or by supporting the affected places to reduce the impacts of disasters and initiating the improvement of operational skills to face the emergency situation better [4], [12]. The main purpose of humanitarian agencies is to save lives, alleviate poverty and vulnerability in the longer term, and preserve human dignity [13]. Over the past century, humanitarian support has been provided by means of in-kind products and services. However, such in-kind assistance may not always be the most proper response [14], [15], in particular, when the immediate needs are met and the sudden disaster is stabilized. Developing countries and donors are increasingly interested in moving away from in-kind assistance and replacing it with alternative transfer modalities, such as CBIs. These are considered more cost-effective for all parties and more enabling for the beneficiaries to supply and consume a wider range of foods or goods than what would be otherwise distributed by in-kind programs [13], [16], [17]. The field data show, with an access to CBIs, beneficiaries more frequently buy food and in a greater quantity and variety [18]. Thus, it increases their access to fresh products, improves their dietary diversity, and often saves them money as well.

CBIs are modes of transferring direct financial aid (either through cash or vouchers) to beneficiaries and are known to improve beneficiaries' livelihood and to generate feelings of hope and a sense of security [19]. CBIs can be classified into four categories; unconditional cash transfers, conditional cash

Manuscript received February 28, 2019; revised August 31, 2019 and December 29, 2019; accepted March 3, 2020. This work was supported by ESRC under Grant ES/P002439/1. Review of this manuscript was arranged by Department Editor A. Solis. (Corresponding author: Fahimeh Allahi.)

Fahimeh Allahi is with the Department of Mechanical, Energy, Management and Transport Engineering, University of Genoa, 16121 Genoa, Italy, and also with the Wolfson School of Mechanical, Electrical and Manufacturing Engineering, Loughborough University, LE11 3TU Loughborough, U.K. (e-mail: allahi@dime.unige.it).

Saeed Taheri and Ramez Kian are with the Nottingham Business School, Nottingham Trent University, NG1 4FQ Nottingham, U.K. (e-mail: saeed.taheri@ntu.ac.uk; ramez.kian@ntu.ac.uk).

Ehsan Sabet is with the Wolfson School of Mechanical, Electrical and Manufacturing Engineering, Loughborough University, LE11 3TU Loughborough, U.K. (e-mail: e.sabet@lboro.ac.uk).

Color versions of one or more of the figures in this article are available online at <http://ieeexplore.ieee.org>.

Digital Object Identifier 10.1109/TEM.2020.2982583

interventions, vouchers (cash or commodity), and microcredits [20]. Most of these means have been implemented by aid organizations for many years. For instance, in the 1990s, UNHCR distributed a considerable amount of cash to over 3.5 million beneficiaries in Central America and Afghanistan, and by 2011, over 35% of humanitarian agencies were using CBIs [15].

CBIs enhance beneficiaries' dignity by giving the freedom of choice, and hence provide them with a higher level of satisfaction and well-being [21]. In fact, one could argue that as CBIs have become a major part of humanitarian aid around the world, the well-being of beneficiaries have improved in both developed and developing countries [13], [17].

The narratives of CBIs have recently been reviewed [15], and "dignity" has been named as the most significant impact of CBIs in long-term and persistent refugee crises [12]. Dignity can be described as the ability to identify and satisfy one's needs in a prioritized way [22]. The essential and critical building factors of dignity can be described as access to health, social security, and safety, access to education, and access to basic needs (food and accommodation) and enhanced spending choices to exercise "coping strategies," such as selling assets, taking on debts, taking degrading jobs, and child labor [23]–[27]. In this article, we categorize these elements into three pillars of dignity, namely overall health and social security, education, and improved coping strategy. Because CBIs are increasingly becoming a common mode of aid transfer for humanitarian organizations, there is a need to better understand CBI effects on the key components of refugees' dignity and humanitarian operations [20], [28]–[30], and the impact mechanism of CBIs on the building elements of dignity [31]. Such an analysis is particularly needed at the initiation phase of CBI programs [32]. Hence, this article aims to address this need, first by understanding dignity and its building elements, by investigating the interaction dynamics between these building elements, by assessing the impact of CBIs in changing such interactions, and finally by offering a system dynamics (SD) simulation model verified with a series field data, as a future guideline for CBI schemes. This is the first time such a model has been developed for a better understanding of CBI impact on refugees' overall dignity.

We have explored both academic and organizational reports to address and classify impact factors in humanitarian crises. We also contribute to the literature by forming a holistic causal relation between the factors identified, which forms a basis for an SD model. To the best of our knowledge, our article is the first research project that uses a quantitative SD model verified and validated with real data for different factors related to the refugee crisis. Our validated model is then used to forecast the future situation and depict the trend of stock values, which might be the KPIs in a bigger picture for policy makers in humanitarian organizations.

The rest of this article is organized as follows. Section II presents findings on the aforementioned factors within the existing body of the literature. Section III will analyze the subfactors by causal loop models to see the relations and interactions between them. The impacts of CBIs will also be displayed by SD in Section IV. A numerical study

to verify and validate our proposed SD model is also presented. Finally, Section V concludes this article.

## II. SD IN HUMANITARIAN AID

SD is a simulation methodology, initially developed by J. W. Forrester in 1958 at the Massachusetts Institute of Technology, Revetria *et al.* [33] featured the multiloop characteristics of the feedback systems in human life. An SD model can be demonstrated graphically by utilizing a mix of simulation modeling to improve comprehension [34]–[36]. SD tools are required to build macromodels and are specified by differential equations [37]. Such simulation models can be used as powerful decision support systems, due to their high ability to generate detailed components and their complex relations to assess the various alternatives [38].

The application of SD has recently been reviewed in crisis management and humanitarian aid [12]. In two separate studies Cassettari *et al.* [39] and Cooke [40] presented an SD model to study an emergency impact on hospital operations and management. The methodology represented an opportunity to model different phenomena in humanitarian aid to support managers in designing more effective policy interventions in the long run. In another study, human behavior during a flood crisis was modeled by SD to evaluate the effectiveness of various flood emergency management systems [41]. Lately, several efforts have been proposed to analyze the use of systems dynamics in humanitarian emergencies [42], [43]. The proposed methods represent an opportunity to model different phenomena in humanitarian aid to support managers to design more effective policy interventions in the long run.

In a more recent study in the domain of humanitarian supply chain management, an SD model was used to model distribution of critical supplies during relief procedures in case of a hurricane event to understand relief supply required in accommodation and points of distribution [44]. A similar study [45] suggested an SD model for the transfer of food items during a disaster and developed a decision framework on how to allocate budgets in emergencies. Although SD models in humanitarian aid have been increasingly exploited in recent studies, none of the existing studies has managed to implement a holistic set of parameters to gauge and model beneficiaries' dignity and well-being in a persistent and long-term refugee crisis, as directly targeted by this article.

In this article, we use SD approach to simulate CBI impact on refugees' dignity and its building elements. CBIs for refugees are by nature systemic and complex, influencing many interconnected subsystems (e.g., level of refugee health), which can be demonstrated by causal loop diagrams (CLDs) to systemically demonstrate and interpret the dynamic complexity. CLDs are essential tools and visual qualitative models for interpreting the feedback structure of systems by employing feedback loops to show links between the variables that define a system [46]. They have long been employed in academic studies and frequently applied in organizations to quickly capture assumptions about the causes of dynamics [34]. The consequences of relations

between the variables can be further simulated via the model to evaluate and enhance the perception of this complex system.

### III. CBIs IMPACT ON DIGNITY

Reviewing crisis management and humanitarian aid literature, this section studies the building boxes of dignity, as categorized in Section I, in three main groups of coping strategy, health and social security, and education. The interaction between factors is extensively reviewed and the impact of CBIs on such interactions is discussed. A CLD will be developed as a result of this section, as the discussion progresses. We first discuss the elements of dignity in the following order: first the impact on coping strategies, then the impact on health and social security, and last the impact on education.

#### A. Impact on Coping Strategies

Regrettably, the longer the civil war lasts in Syria, the more refugees exhaust their saving resources and assets, leading to more debts and poverty [9]. One study shows that 80% of Syrian refugees in Turkey are living under the poverty line while housing expenses are constantly rising [47]. Food and rent account for 75% of the average household expenditure, leaving refugees with no choice but to exercise a wide range of coping strategies [48]. Coping strategies are the decisions made by beneficiaries to overcome the existing and mainly financial problems in emergency situations or at refugee camps. Such decisions may involve using emergency savings, selling assets, incurring debts, exploitative or degrading employment, and child labor [49]. CBIs enhance dignity by enabling beneficiaries to fulfill their own high-priority needs with less reliance on exercising their coping strategies [15]. The main elements of the coping strategies are discussed below and summarized in Table I.

Reportedly, the total debt of CBI recipients is lower than for those who receive no cash interventions [29], [50]. Moreover, studies show that one-third of cash recipients often pay off some of their debts to avoid accumulating and increasing debt [27].

Recent field research [21] has shown that CBIs have provided a majority of beneficiaries with an option of living outside refugee camps in the city areas with relatively high living costs, thus providing them with an opportunity to better blend with the hosting culture, find jobs, and thus better contribute to their own and the hosting community. CBIs play a critical role in affording accommodation in urban areas for the beneficiaries and, therefore, have indirect positive effects on the mental well-being of many recipients. With regard to the Syrian refugees in Turkey, data show over 90% of beneficiaries reported that CBIs enabled them to pay rent in urban areas, and 40% reported CBIs supported them in moving to better accommodation [47].

Another study [11] shows that 47% of households that receive CBIs are even able to save part of the cash transfer, which increases their resilience and reduces their reliance on coping strategies. Field research in [51] and [52] find evidence that CBI receivers are more likely to generate more income and hence have a higher total income as well. As a result of the increased total income, beneficiaries are more likely to afford

dietary diversity, which improves their physical and mental well-being [21], [48], [50].

Poverty is the main cause for increasing the amount of child labor in refugee households, which is a significant measure in persistent refugee crisis [53]. Reports [54] show the effectiveness of CBIs in enabling refugees to better utilize their cash resources that often reduces child-labor rates and instead increases child school attendance. Moreover, CBI narratives work permits by the hosting governments enable adult refugees to legally work that not only contributes to the local economy, but also prevents them from exercising their coping strategies and engaging in black market or antisocial activities [15], [29], [55].

1) *CLD of CBIs Impact on Coping Strategies*: The CLD illustrated in Fig. 1 shows feedback loops focusing on relationships amongst the major elements of the coping strategies. The figure shows seven basic structure loops; positive causal links (in blue) and negative causal links (in red) create different positive (reinforcing—"R") and negative (balancing—"B") feedback loops. The balancing loop B1 indicates that with more income, refugees stop sending their children to work, thus reducing the amount of child labor [21]. Moreover, the exogenous number of issued work permit factor, shown within the reinforcing loop R1, demonstrates the impact of a work permit along with the CBIs program on the legal employment of beneficiaries [15]. This in turn generates more income and lessens the chance of taking a degrading job in a black market [27], [60]. In addition, as shown in loop B2, an increase in the total income can lead to an increase of the total assets [52]. An increase in the total income as a part of total assets also leads to a reduction in debt, whereas borrowing money provides extra assets [48], as shown in loop B3. Moreover, the more beneficiaries are enabled to pay their debt, the less poverty they may face and, thus, less child labor may occur [50]. Beneficiaries with higher assets are more likely to save more and similarly more saving by increased purchasing power is correlated to the total asset growth of recipients [26], which is reflected in loop R2. Furthermore, Bailey *et al.* [29] and Creti [66] declared that the more income beneficiaries receive, the more they can spend because of enhanced purchasing power, which results in the improvement of saving and assets, leading to overcoming poverty and the less amount of child labor, which is shown in loop B4.

As shown in loop R3, lower debts preserve the total assets that beneficiaries possess, and protects beneficiaries against the risk of remaining in poverty longer, which in turn results in a reduced need to exercise different coping strategies, such as cashing available assets or withdrawing children from school.

#### B. Impact on Health and Social Security

Access to healthcare services is a basic human right that humanitarian organizations aim to provide [26], [70]. Field research on the Syrian refugee crisis in Turkey [52] reports that approximately 60% of all financial support by humanitarian agencies aims at ensuring primary assistance to refugees, which in particular means supporting them in their food and healthcare requirements.

TABLE I  
OVERVIEW OF THE IMPACT FACTORS FOR COPING STRATEGIES

No.	Impact factors	Contribution to coping strategies	Sources	Interactions	Sources
1.1	Anti-social expenditure	Using cash for anti-social purposes; spending it on non-essential items like alcohol, drugs and cigarettes	[28], [51], [56]–[60]	Reducing of expenditure on foods which cause less dietary diversity, threatening physical and mental health, leading to more violence and reducing total assets	[30], [56], [61]
1.2	Amount of child labor	Earning money by working of children in school age which is a negative coping strategy used by beneficiaries because of the main cause of their poverty	[20], [48], [49], [51], [53], [62], [63]	Generating more income by receiving cash, preventing implementing a negative coping strategy like child labor and causing increasing of children's attendance at school, Similarly, more number of employed beneficiaries, reduces sending children to work	[15], [48], [64], [65]
1.3	Savings	Obtaining more savings such as gold and bank accounts can be secure for beneficiaries by CBIs	[11], [29], [49], [56], [62]	Expanding purchasing power and high amount of assets from CBIs, cause raise of savings and as a result increase of assets again	[26]
1.4	Debt	An alternative way to cover substantial expenses of refugees' lives when they cannot provide their basic needs and cash assistance facilitating recipients to repay their debt	[27], [49], [50], [61]	Total high expenditure leading to a nominal increase in debt and a growth in poverty. An improvement in assets by CBIs, leading to lower debt which improves mental health level	[27], [50]
1.5	Number of employed Syrian refugees	Putting more effort into finding work by CBIs than those in comparable households not receiving grants; more successful in finding jobs in markets and self-employ with CBIs	[15], [62], [66]	Leading to high education level by CBIs, healthier body to increase chance of employment in market or causes self-employment which reduces the amount of child-labor and generates more income	[60], [67]
1.6	Number of employed Syrian refugees in black market	Engaging in high-risk, informal, underpaid, illegal or socially degrading jobs such as cleaning jobs and sales of food rations, producing a feeling of being at risk of exploitation by landlords and lack of accessibility to trusted legal jobs for refugees	[50], [54]	Issuing of work permit for beneficiaries and increasing of income from CBIs, cause reducing employment in black markets and enhancing taking secure jobs	[60]
1.7	Household expenditure	Enabling households to have a higher expenditure on household items, household size, rent and utilities by CBIs	[11], [21], [48], [54]	Improvement of purchasing power by CBIs, enable beneficiaries to spend more on house-related items with owning accommodation, lessening household cost	[50]

TABLE I  
CONTINUED.

No.	Impact factors	Contribution to coping strategies	Sources	Interactions	Sources
1.8	Poverty line	Lack of money, assets and food security, reduction of access to accommodation and being in debt	[11], [20], [29], [48], [51], [62], [64], [68], [50]	Enabling payment of debt and having more assets by CBIs, reducing poverty to not face continuous food shortages and lack of accommodation	[50]
1.9	Purchasing power	The larger the payment by CBIs program, the more likely this will be spent on assets, household and health expenditure and in some cases spending on anti-social items	[29], [50], [59], [66]	Higher income affects rise in purchasing power and results in improvement of spending money on health, household items, anti-social expenditure and more savings	[29], [56]
1.10	Number of self accommodated	Owning one's accommodation, better living conditions, supporting not paying rent and having a permanent house, can be obtained with CBIs for beneficiaries who usually live in insecure settlements with poorly built defectively preserved housing	[14], [15], [47], [50]	By owning accommodation, accessing better hygiene facilities and adequate water which reduces household's expenditure	[47]
1.11	Total assets	considered as durable and productive assets, total income and savings	[48], [49], [50], [63]	Enhancing of household's ability to save more and less debt by CBIs, leading to improvement of total assets which reduces poverty	[50], [61]
1.12	Total income	Referring to injected cash from CBI program and wages earned from employment by beneficiaries who had insufficient financial reserves to purchase supplies before	[11], [20], [29], [48]–[52], [54], [59], [60]	Higher incomes are expected to enhance beneficiaries purchasing power, spending more cash on various meals to have more dietary diversity, reducing the amount of child labor, supporting recipients to own accommodation and intending to spend further on education	[26], [48], [52]
1.13	Number of issued Work permit	Facilitating the issuance of work permits with CBI, granting strategic inclusion of Syrian refugees into workforce	[27], [69]	Recipients with work permit, employed much more in markets and less taking a degrading job in a black market	[9], [27]

Healthcare and social security needs are categorized in eight measures of access to healthcare service: access to water and sanitation facilities, availability of health services, dietary diversity, health expenditure, general or physical health, mental health, and violence [26]. These are defined and described in Table II. CBIs have been reportedly described as one of the most effective means of enhancing refugees' access to healthcare services they need most [20]. The high costs of healthcare is one of the most commonly reported hindering factors for refugees not to seek healthcare services [70]. Furthermore, CBIs are reported to positively impact food security, nutrition status, and access to clean water and hygiene facilities, which all enhance the general health of refugees [29]. Reviving CBIs often plays a significant role in affording daily meals [20] and dietary diversity [29]. As discussed before, CBIs reduce violence in refugee communities and hence improve the

mental health of the community in general, and in particular, for the women who experienced different kinds of abuse due to the absence of cash resources and increased poverty in their community [30].

1) *CLD of CBIs Impact on Health and Social Security*: Fig. 2 demonstrates the effects of CBIs on health and social security and behavior, and their interactions with the elements of coping strategies. The causal interconnections corresponding to these two subsystems are specified with green and blue colors, respectively. CBIs empower beneficiaries to be more employed and earn more income, thus improve the chance of dietary diversity and overall health [50], [71] (loop R4). Enhanced overall health state of refugees positively affects their well-being and reduces stress levels to refine mental health level [47] (loop R6). This can reduce the level of violence and antisocial activities [79] (loop R7), which in turn saves refugees money,

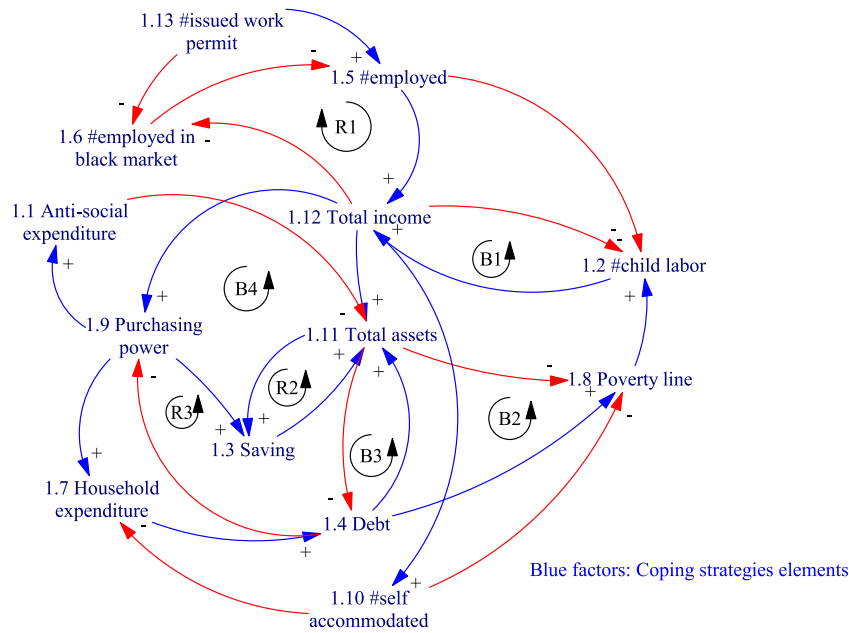


Fig. 1. CLD of coping strategies (R: Reinforcing loop and B: Balancing loop).

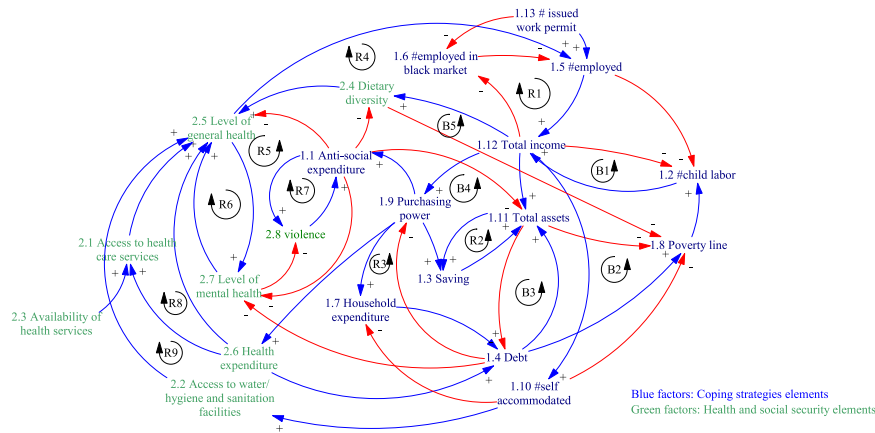


Fig. 2. CLD of coping strategies and health and social security (R: Reinforcing loop and B: Balancing loop).

increases the level of saving, and reinforces the health loop (loop R5). Moreover, recipients of CBIs show an increase in their total expenditure, and particularly in their health expenditure [50]. In addition, increased health expenditure is associated with improvement of access to health services and, thus, enhanced overall health of the beneficiaries [61]. The interconnections between level of general health, number of employed refugees, total income, and purchasing power are shown in loop R8, which emphasizes the positive effect of CBIs on the health status of refugees.

Refugees with access to improved self-accommodation have better access to adequate water and sanitation facilities and are healthier [73]. Hence, in the positive loop R9, the relations of health, employment, income, and self-accommodation declare an important outcome of CBIs on the accommodation for refugees.

### C. Impact on Education

General studies of low-income communities highlight that households have on average 2–3 children of school age (5–17 years old), although more than half of these children often do not attend school [50]. More than half of all Syrian refugees are under the age of 18, with over 75% not enrolled in any school in Turkey [9]. CBIs help to reduce the number of children missing school by covering a large proportion of their education costs [47] and their transportation costs [61]. Moreover, covering the cost of attending schools, CBIs are reported to enhance the children's education level by up to 40% [74]. In addition, UNHCR in Turkey initiated a CBI program to incentivize primary and secondary school enrollment and retention [9], [48]. Outcomes of CBI evaluations to this end have been widely positive, showing considerable improvements in school enrollment rates as well as a decreased rate of child labor [62].

TABLE II  
OVERVIEW OF IMPACT FACTORS FOR HEALTH AND SOCIAL SECURITY

No	Impact factors	Contribution to health	Sources	Interactions	Sources
2.1	Access to healthcare services	Access to health care by providing necessary funds to pay for the service and related expenses for refugees who require ongoing medical care	[20], [29], [47], [51], [64], [71]	Relating to general health and health care expenditure; availability of health care services can increase access to health services	[71]
2.2	Access to water/ hygiene and sanitation facilities	Lack of appropriate accommodation, reduced access to adequate water and sanitation facilities; enabling refugees to have safe access to water of sufficient quality and quantity by CBIs, improving sanitation and hygiene	[51], [72]	Improvement of accommodation and living conditions of beneficiaries, bringing about more access to adequate water and sanitation facilities to be healthier	[73], [74]
2.3	Availability of health services	An exogenous factor which ensures the availability of these services, provides access to healthcare services	[9]	Providing basic health services, improving health status of refugees (the key role for primary health); the better the quality and availability of health services, the more success for CBIs	[9]
2.4	Dietary Diversity	Defined as an indicator of the food quality, constructed from the sum of unique food stuffs consumed in a specified period of time; improvement of meals both in terms of size and quality; consuming fresher and healthier foods; improving refugees' diet variety	[20], [21], [28], [29], [49], [50], [51], [56], [75]	Increasing total income of refugees by CBI programs, associated with a raise in dietary diversity; however, spending money on anti-social purposes has a negative effect on food security	[50], [71]
2.5	Level of general health	Referring to general medical and reproductive health; improving health status in refugees can be provided by CBIs	[74], [76]	Healthier refugees, more likely to be employed; enabling beneficiaries to spend more on health care related items to be healthier by CBIs; accessing to better water, hygiene facilities and healthcare services lead to improvement of their health status	[48], [52], [71]

In other research, the World Food Program reported 38% of cash recipients spent cash on education costs for their children [20]. All the impact factors regarding the education are summarized in Table III.

1) *CLD of CBIs Impact on Education*: Fig. 3 illustrates the final CLD of this article, which combines the interactions of the coping strategies, health and social security, with those of refugees' education, which all together covers refugees' dignity, as discussed earlier.

In this final CLD, a total of 16 interconnected key feedback loops are suggested, of which 14 are those from previous sections (coping strategies and health and social security). The education elements have been highlighted in red. Two positive and negative feedback loops labeled as R10 and B6 represent the effects of

school attendance on employment and of access to education services on total income, respectively.

Loop R10 illustrates the positive impact of education on the employ ability of refugees, learning skill, and hosting country's language [48]. In a crises situation and with no CBI support, households often send their children to work to support the family by earning some extra income, which can be reversed by increased total household income, pushing more children to schools [20], [49], [63]. Lower child labor rate often means more school attendance and thus improved education level, and consequently more employment rates in the legal market over a longer time [53] (see R10 loop). Loop B6 demonstrates the impact of total household income on education expenditure and consequently on children's school attendance.



TABLE II  
CONTINUED.

No	Impact factors	Contribution to health	Sources	Interactions	Sources
2.6	Health expenditure	Spending money on medical centers, medicines and medical expenses; applied in CBI programs by more than half of beneficiaries	[20], [29], [48], [51], [61], [64]	Having more income from CBIs, aim to spend more on improving health outcomes and accessing better medical centers; high health expenses lead to more debt	[48], [52]
2.7	Level of mental health	Referring to stress, major depression, generalized anxiety, panic attacks, adjustment disorder, and somatization of refugees which reduced by CBIs, cause improvement in their psychological well-being	[20], [47], [50], [77]	More mental problems affect refugee's physical health; spending money on negative impacts such as anti-social expenditure and debt reducing refugee's mental health status and cause intra-house violence	[30], [47], [61]
2.8	Violence	Referring to physical, sexual and psychological violence occurring in the families of beneficiaries, including battering, sexual exploitation, sexual abuse of children in the household, marital violation, non-spousal violence and violence related to exploitation	[78], [60]	Anti-social expenditure contributes to more violence in the household and also leads to poorer mental health in recipients	[30]

Some field research shows 38% of refugees who received CBIs spend more money on the education costs for their kids [47], [61].

In the following section, a stock and flow simulation model is provided, and numerical verification and validation are presented.

#### IV. QUANTITATIVE ANALYSIS: STOCK AND FLOW SIMULATION MODEL

In this section, a simulation structure of the CLDs described in the previous section is presented. The quantified stock and flow diagrams of the above discussed CBI CLDs are created using Vensim software [80]. As the quantified SD modeling requires specification of the major flows and stocks in the system, the major factors in the causal model were used in the simulation development.

The impact of CBIs on different factors of dignity is simulated, whereas seven main stock variables related to Syrian refugees are considered: Net incomes for the refugees population (in US dollars); total antisocial expenditures by the refugees population (in US dollars); number of employed refugees; amount of child labor; number of refugees receiving health services; number of refugees receiving educational services; and number of self-accommodated refugees.

The quantitative model is designed around the concept of "Net Income" of Syrian refugees as a direct factor influencing refugees dignity in their hosting country, Turkey. "Net income" is modeled as a stock whose value increases based on the inflow of money (money making rate) and decreases based on the outflow of money (money spending rate). Income sources of Syrian refugees comprise the following.

- 1) The total CBIs paid by the government and the organizations, which is modeled as a constant and total "CBI" and currently sums up to US\$320 per year per eligible family member [81].
- 2) Salaries in case of formal or informal employments in Turkey.
- 3) Other sources of income, including cashing the savings and assets, debts, and bank loans.

Since there is no reliable source of data for the other sources of income, they are all aggregated as a constant "Other sources" into the variable "Money making rate." If the net income of Syrian refugees is less than the poverty line in Turkey, they will exercise their coping strategies. Due to data scarcity, amount of child labor is the only coping strategy that is quantitatively modeled in this article. As long as the net income of beneficiaries is below the poverty line, the number of child labor increases based on a first-degree stock and flow model, and the child labor income contributes to the beneficiaries' net income. The way refugees tend to spend money is modeled as follows (the Money Spending Rate). In general, beneficiaries will first spend money to cover their essential needs. If their net income is above the poverty line, then the surplus of money will be spent on their secondary needs, including accommodation, education, and health service, which are all modeled as first-order stocks and flows. In addition, part of the money will also cover beneficiaries' antisocial expenditure (mainly buying tobacco [82]). The amount of money spent on these different needs are determined by indices in the model, whose numerical values will be defined during the calibration of the model and through finding the best fit between the model outcomes and the available time-series data, similar to other studies [83].

TABLE III  
OVERVIEW OF IMPACT FACTORS FOR EDUCATION

No	Impact factors	Contribution to education	Sources	Interactions	Sources
3.1	Access to education services	By providing necessary funds to pay for this service and related expenses to contribute to refugees who require access to ongoing education service	[20], [29], [60], [71]	Improving in access to schools, leads to a reduction in the number of children missing school and ultimately become child labor	[20], [29], [51]
3.2	Availability of education services	An exogenous factor which ensure the availability of education services, provides access to them	[9]	Providing schools and learning centers to promote the education level of refugees (The key role for primary education); the better quality and availability of education services, the more success of CBIs programs	[9]
3.3	Education expenditure	Spending money on school enrollment and educational purposes (more than one third of beneficiaries)	[47], [61]	Spending on education reflecting children improved access to school	[47]
3.4	Education level	An academic performance; more than half of CBIs recipients announce improvement of their academic knowledge	[21], [47], [67]	By providing training programs for refugees in CBIs and improving of the educational level, employed better in the market	[21], [67]
3.5	Number of received education service	lower withdrawal of children from education, leads to reduction in the number of children missing school (60% of beneficiaries in CBIs program)	[20], [50], [51], [60], [62]	Enabling a huge number of recipients' children to leave the workforce and return to school through CBIs program	[50]

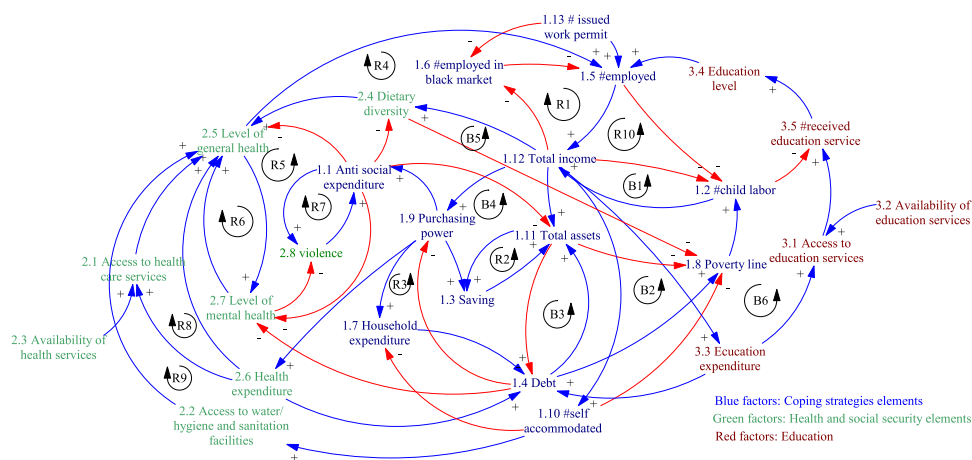


Fig. 3. CLD of coping strategies, health and social security, and education (R: Reinforcing loop and B: Balancing loop).



TABLE V  
HISTORICAL DATA FOR THE IDENTIFIED IMPACT FACTORS

No.	Impact Name	Data series							Units	Resources
		2012	2013	2014	2015	2016	2017	2018		
1	Child labor wage	\$354	\$345	\$372	\$432	\$536	\$663	\$852	Dollar/ son/year	[88]
2	Number of children doing child labor	0	19,225	59,587	94,845	125,000	150,051	170,000	Person	[89]
3	Number of employed working-age Syrian refugees	3,990	133,992	363,659	693,000	1,122,000	1,650,644	2,278,967	Person	[81], [90], [91]
4	Number of Syrian refugees looking for jobs	78,674	296,797	860,105	1,326,881	1,491,755	1,814,846	1,919,854	Person	[8]
5	Number of work permit issued to Syrian refugees	26,632	30,881	35,808	41,519	48,142	56,024	65,000	Person/Year	[85]
6	Number of Syrian refugees' access to health care services	0	0	224,000	960,000	2,178,000	2,595,664	3,013,328	Person	[81], [87], [92]
7	Availability of education services to Syrian refugee population	0.3267	0.4017	0.4767	0.55	0.63	0.7	0.7767	Dmnl	[93]
8	Number of Syrian children who received educational services	0	0	130,000	511,259	710,489	872,536	1,109,453	Person	[86], [93], [94]
9	Number of Syrian refugees in Turkey	9,500	148,441	559,994	1,622,839	2,503,549	2,854,968	3,424,237	Person	[86], [93]
10	Number of Syrian children in Turkey	4000	74,220	279,997	811,419	1,138,992	1,239,866	1,746,160	Person	[86], [93]
11	Number of Syrian refugees with own accommodation	0	0	503,000	1,135,990	1,897,890	2,637,704	3,355,432	Person	[86], [92], [91]

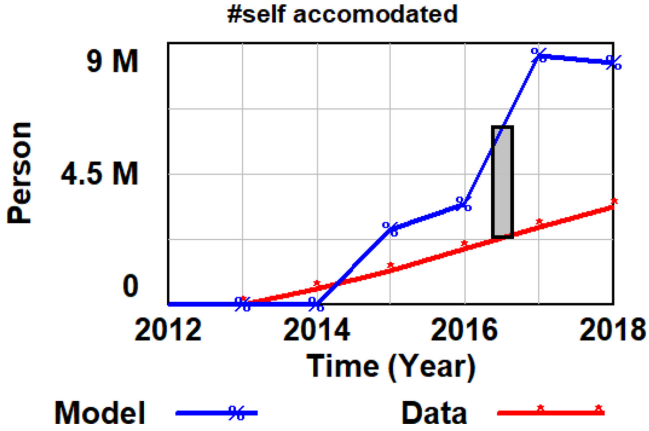


Fig. 5. Sample component of calibration payoff function; the gray area between the model and data lines represents the quantity we aim to minimize.

TABLE VI  
WEIGHT VALUES FOR CALIBRATION

Weights	Values
$W_{CL}$	0.2
$W_{EM}$	0.2
$W_{SA}$	0.2
$W_{HS}$	0.2
$W_{ES}$	0.2

payoff function for the model that includes the sum of squared percentage error for the aforementioned parameters. Once the errors of different parameters are normalized into percentages, they could be added together using their corresponding weights, which is symbolized by ( $W$ ). The values of weights, as listed in Table VI, are set so that all parameters are scaled to be of the same order of magnitude

Payoff

$$\begin{aligned}
&= \frac{1}{\text{Time Step}} \left\{ W_{CL} \int \left( \frac{CL_m(t) - CL_d(t)}{CL_m(t) + CL_d(t)} \right)^2 .dt \right. \\
&+ W_{EM} \int \left( \frac{EM_m(t) - EM_d(t)}{EM_m(t) + EM_d(t)} \right)^2 .dt \\
&+ W_{SA} \int \left( \frac{SA_m(t) - SA_d(t)}{SA_m(t) + SA_d(t)} \right)^2 .dt \\
&+ W_{HS} \int \left( \frac{HS_m(t) - HS_d(t)}{HS_m(t) + HS_d(t)} \right)^2 .dt \\
&\left. + W_{ES} \int \left( \frac{ES_m(t) - ES_d(t)}{ES_m(t) + ES_d(t)} \right)^2 .dt \right\}. \quad (1)
\end{aligned}$$

The optimization is conducted using Vensim's built-in Powell conjugate search algorithm (see [96]) using different combinations of weight values and start points in the parameter space. Through this iterative process, Vensim repeatedly runs the model using a set of parameter values sent by its optimizer, and after each run, the payoff value is sent back to the optimizer, where it is compared with the previous runs. The stopping criterion is 1000 iterations, among which the best fit between the model outcomes

TABLE VII  
ADJUSTING PARAMETERS VALUE BASED ON THE CALIBRATION MODEL

Indices	Estimated values
Child labor index	0.21370
Accom. Exp. index	0.885972
Anti-S Exp. index	0.446101
Health Exp. index	0.408864
Edu. Exp. index	0.148135

and the real data are evolved. Table VII lists the estimated values of different indices, and Fig. 6 illustrates the best fit for selected variables in the calibrated model.

## V. CONCLUSION

To study the impact of different levels of CBI paid to beneficiaries on the impact factors, we have examined a  $\pm 100\%$  CBI variation and the results are illustrated in Fig. 8 of Appendix B in which different colors corresponding to each confidence level. According to these graphs, all stocks except the number of employed refugees are sensitive to the changes in the CBI level where the trends of the variables change with almost a linear multiplier offset for each factor. As shown in Fig. 8(a), CBIs only contribute up to 20% of beneficiaries' total income, and thus they often seek and secure formal or informal jobs and sources of income to support themselves and their family, regardless the CBIs they receive. Hence, the employment factor has been formulated independent of CBI level, as shown in Fig. 8(c). In addition, some differences in the magnitude of sensitivity between different variables are observed. For instance, the confidence intervals are narrower initially for net income [see Fig. 8(a)], antisocial expenditure [see Fig. 8(b)], child labor [see Fig. 8(d)], and education service [see Fig. 8(f)], and then get wider in the longer term. Considering the long-term importance of education in refugees dignity and its contribution to the hosting community in a long run persistent crisis, this result should raise a red flag to policy makers. In contrast, health service [see Fig. 8(e)] and self-accommodation [see Fig. 8(g)] are more sensitive to CBI changes in the short term, whereas become less sensitive in the longer term, which might be due to the infrastructure and resource capacity consideration of the hosting society. Based on the historical data, the model includes a linear growth of investment in infrastructure, proportional to the population of inflow refugees, and therefore, the number of refugees who receive health service or are self-accommodated are still restricted by the capacity for these services over time. As a result, these stock variables are saturated in the long term and behave less sensitive to the CBI level. In addition, the S-shaped trend of these variables is due to the dominance of the balancing loop corresponding to the capacity limits over the reinforcing loops over time.

Fig. 7 shows the current amount of CBI (\$320/Person/Year) with two other extreme scenarios of no CBI and 100% increase in CBI to study the impact of different amounts of CBIs on the building boxes of the beneficiaries' dignity. According to Fig. 7(b), doubling the amount of CBI increases antisocial expenditure by above 15% and paying no CBI decreases it roughly 20%. Although it shows the negative impact of CBIs, it indicates

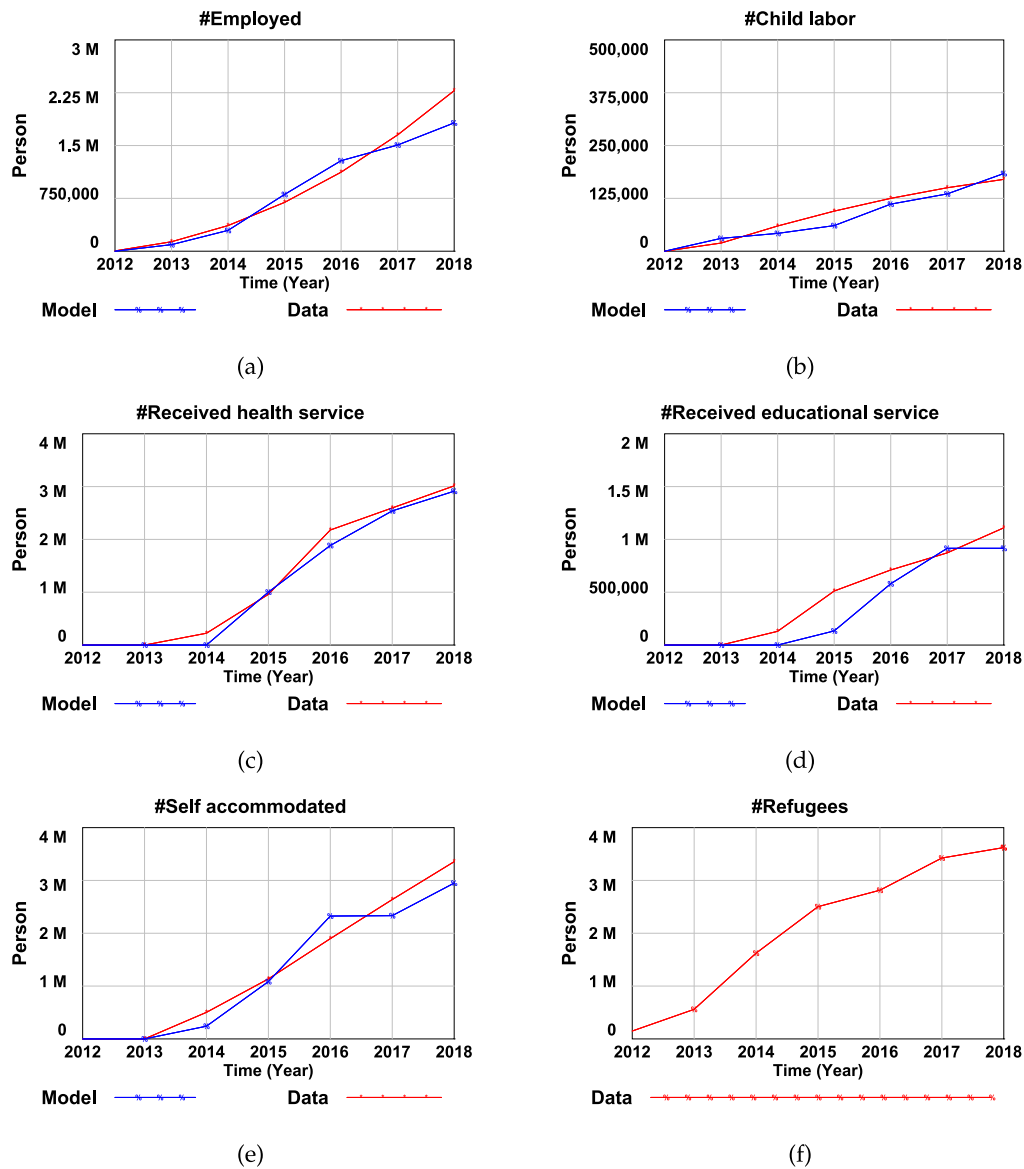


Fig. 6. (a)–(e) Stock variables in terms of the population of Syrian refugees in Turkey with the “Person” unit, used for calibration with real data. (f) Population of Syrian refugees in Turkey (real data).

a diminishing growth rate of antisocial expenditures by increase of CBI support. Fig. 7(d) also shows a diminishing growth rate of child labor by increasing CBI amount. The absolute growth, however, is done to the constant intake of refugees to the country, as shown in Fig. 6(f).

The results of CBI change on service reception by refugees [see Fig. 7(c)–(e)] show that an increase in CBI programs in short and medium terms have significant impacts on such services and especially on accommodation and health services, and thus can empower them to avoid exercising their negative coping strategies, such as debt, selling valuable assets, and child labor. However, such impacts are less significant in long term if the service infrastructures are not well developed and in a balance with the increasing demand from the inflow of refugees. In such situations, an increase in CBI programs and a loner-term schemes can only lead to a quicker saturation of service capacities, which in turn may cause competition over

resources, such as accommodations, and thus lead to enhanced local inflation. Moreover, the result of Fig. 7 shows that the amount of CBI currently paid to the refugees (\$320/Person/Year) is well balanced with the increasing demand of growing refugee population on the limited and slow-growing service capacity in the country. As shown in Fig. 7(c) and (e), 100% increase in CBI can lead to an early capacity saturation and extra pressure on already stretched service infrastructures.

This article showed that CBI, in moderate amounts, can be well effective in short and midterms after refugees are settled in a host country, but in for longer term, CBI can only be as effective when well-balanced capacity-building programs are in place and constant investments are made in the service infrastructures. This is in line with what Turkish government as the hosting authority has raised and sought in the last few years and after the mass Syrian refuge situation [97], [98]. These strategic and enabling investments are often overlooked

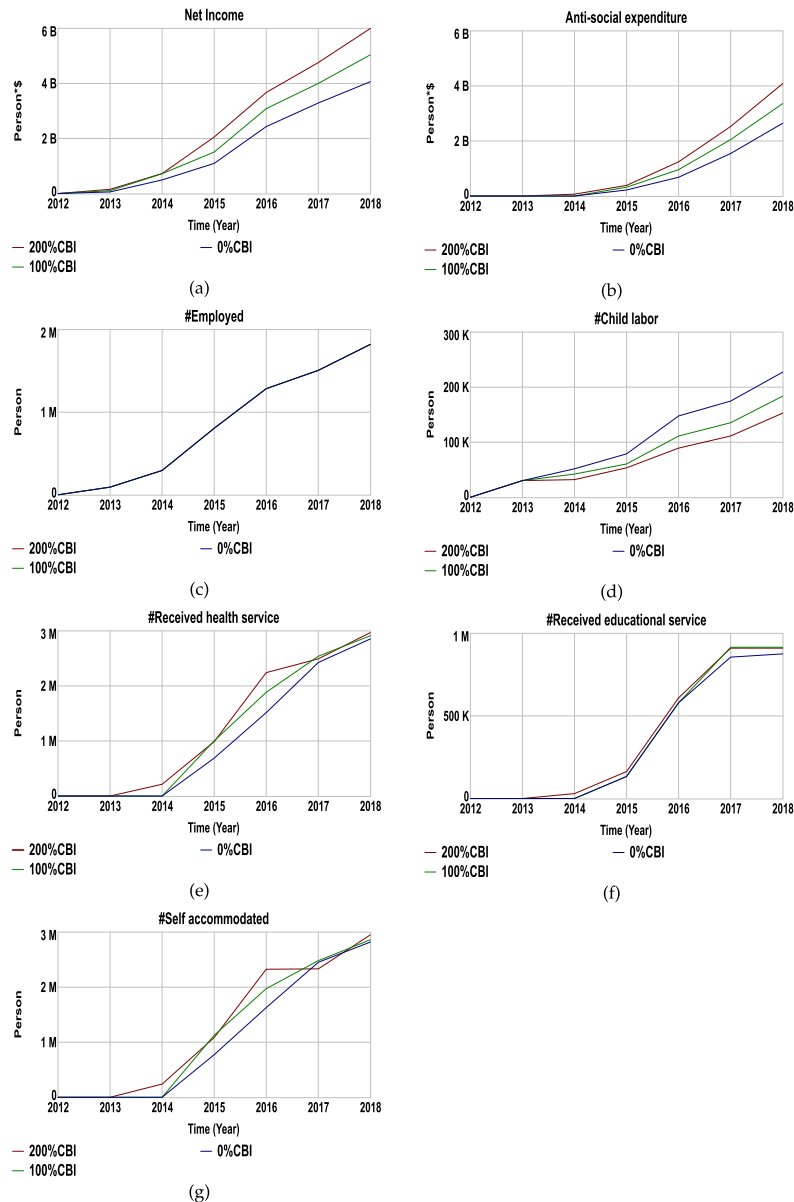


Fig. 7. A 100% and 200% of CBI sensitivity analysis on the stock variables: (a) and (b) in terms of accumulated money over refugee's population, (c)–(g) in terms of number of Syrian refugees.

by humanitarian organizations, due their different priorities and missions. Such investments are mostly considered at national government planning as well as UN and EU support schemes, such as the recent 500 million donation by the European Union to Turkey for the educational infrastructure and school capacity-building in 2016 [98]. Besides the direct impact of high strains on service capacities on refugees, according to International Crisis Group, intercommunal violence between host communities and Syrian refugees increased threefold in the second half of 2017 compared to the same period in 2016, due to socioeconomic inequality driven by high unemployment and limited service capacities caused by constant and significant inflow of refugees to the country [99]. Although several NGOs are working out ways to ease such tensions [100], their focus is yet on providing supports to beneficiaries, rather than aiming for the root cause. Capacity-building investments in persistent refugee crisis

although often required more resources and planning can improve and sustain refugees dignity in all aspects, and ease tensions and facilitate better integration with the hosting community. Thus, a more active and direct capacity-building roles by the humanitarian organizations can enhance the effectiveness and sustainability of their CBI programs in longer terms. As discussed in [101] and [102], humanitarian aid may have significant economic impacts. Potential negative impacts, such as local inflation are due to local competition over resources, such as accommodation. However, this article is highly limited to the availability of the real data for the validation, and as such, the impact of CBIs on local and national inflation have been over viewed. Further studies can address this impact and complete the model. Another direction of research is to encompass the investigation of the effect of mixed CBI and in-kind strategies.

APPENDIX A  
TABLE VIII  
MAIN VARIABLES AND EQUATION: S = STOCK, F = FLOW, AND A = AUXILIARY

#	Type	Variable Name	Unit	Equations
1	S	Anti-social expenditure	Person.Dollar	$\int AS \text{ Exp rate}.dt + 0.0$
2	S	Child labor	Person	$\int Child \text{ labor rate}-Child \text{ labor reduction rate}.dt + 0.0$
3	S	Employed	Person	$\int Informal \text{ Emp rate}+ Formal \text{ Emp rate}.dt + 0.0$
4	S	Net Income	Person.Dollar	$\int Money \text{ making rate}-Money \text{ spending rate}.dt + Initial \text{ money}$
5	S	PO child labor stock	Dmnl	$\int (ZIDZ(((\#Child \text{ labor-data}-Child \text{ labor})^2),((\#Child \text{ labor-data}^2)+(Child \text{ labor}^2))))/TIME \text{ STEP}.dt + 0.0$
6	S	PO Employed	Dmnl	$\int (ZIDZ(((\#Employed-data}-Employed)^2),((\#Employed-data^2)+(Employed^2))))/TIME \text{ STEP}.dt + 0.0$
7	S	PO Received Edu service	Dmnl	$\int (ZIDZ(((\#Received \text{ edu service-data}-Received \text{ educational service})^2),((\#Received \text{ edu service-data}^2)+(Received \text{ educational service}^2))))/TIME \text{ STEP}.dt + 0.0$
8	S	PO Received health service.	Dmnl	$\int (ZIDZ(((\#Received \text{ health service-data}-Received \text{ health service})^2),((\#Received \text{ health service-data}^2)+(Received \text{ health service}^2))))/TIME \text{ STEP}.dt + 0.0$
9	S	PO Self Accommodated.	Dmnl	$\int (ZIDZ(((\#Self-Accommodated-data}-Self \text{ Accommodated})^2),((\#Self-Accommodated-data^2)+(Self \text{ Accommodated}^2))))/TIME \text{ STEP}.dt + 0.0$
10	S	PO stock.	Dmnl	$\int PO/TIME \text{ STEP}.dt + 0.0$
11	S	Received educational service.	Person	$\int Edu \text{ service rate}.dt + 0.0$
12	S	Received health service.	Person	$\int Health \text{ service rate}.dt + 0.0$
13	S	Self Accommodated	Person	$\int Self \text{ accom rate}.dt + 0.0$
14	F	AS Exp rate	Person.Dollar/Year	IF THEN ELSE(Net Income>Income threshold,(1-(Received educational service/Refugees)) * Anti-S Exp index * Net Income/TIME STEP, 0)
15	F	Child labor rate	Person/Year	Income threshold/ Net Income * (Child refugee-Child labor) * Child labor index/TIME STEP
16	F	Child labor reduction rate	Person/Year	IF THEN ELSE(Child labor>0, MIN(Child labor/TIME STEP, Edu service rate) * Child labor index, 0)
17	F	Edu service rate	Person/Year	MIN((Edu Service Availability*Child Refugees),(Education expenditure/Edu cost) * Edu service avail index)/TIME STEP
18	F	Formal Emp rate	Person/Year	#Work Permit
19	F	Health service rate	Person/Year	MIN((Health service availability*Refugees),(health expenditure/health cost) * health service avail index)/TIME STEP
20	F	Informal Emp rate	Person/Year	Employment percentage * (Job seeker-Employed)/TIME STEP
21	F	Money making rate	Person.Dollar/Year	((Refugees * CBI+(Refugees * Other sources)+(Employed * Average Wage)+(Child labor * Child avg Wage))/TIME STEP
22	F	Money spending rate	Person.Dollar/Year	(Accommodation expenditure+ Anti-social expenditure+ Education expenditure+ health expenditure+ Food cost * Refugees)/TIME STEP
23	F	Self accom rate	Person/Year	MIN((Accommodation availability*Refugees),(Accommodation expenditure/Accommodation cost) * Accommodation avail index)/TIME STEP
24	A	Accommodation avail index	Dmnl	MAX(0,1-(Self Accommodated/(Accommodation availability * Refugees)))
25	A	Accommodation expenditure	Person.Dollar	IF THEN ELSE(Net Income>Income threshold, (Net Income-Anti-social expenditure) * Accom Exp index, 0)
26	A	Edu service avail Index	Dmnl	MAX(0,1-(Received educational service/(Edu service availability * Child refugee)))
27	A	Education expenditure	Person.Dollar	IF THEN ELSE(Net Income>Income threshold,(Net Income-Anti-social expenditure) * Edu Exp index, 0)
28	A	Health expenditure	Person.Dollar	IF THEN ELSE(Net Income>Income threshold, (Net Income-Anti-social expenditure) * Health Exp index, 0)
29	A	Health service avail Index	Dmnl	MAX(0,1-(Received health service/(health service availability * Refugees)))
30	A	Income threshold	Person.Dollar	#Refugees * Poverty line
31	A	PO	Dmnl	CL weight * PO Child labor stock+ Em weight * PO Employed+ ES weight * PO Received Edu service+ HS weight * PO Received health service+ SA weight * PO Self Accommodated



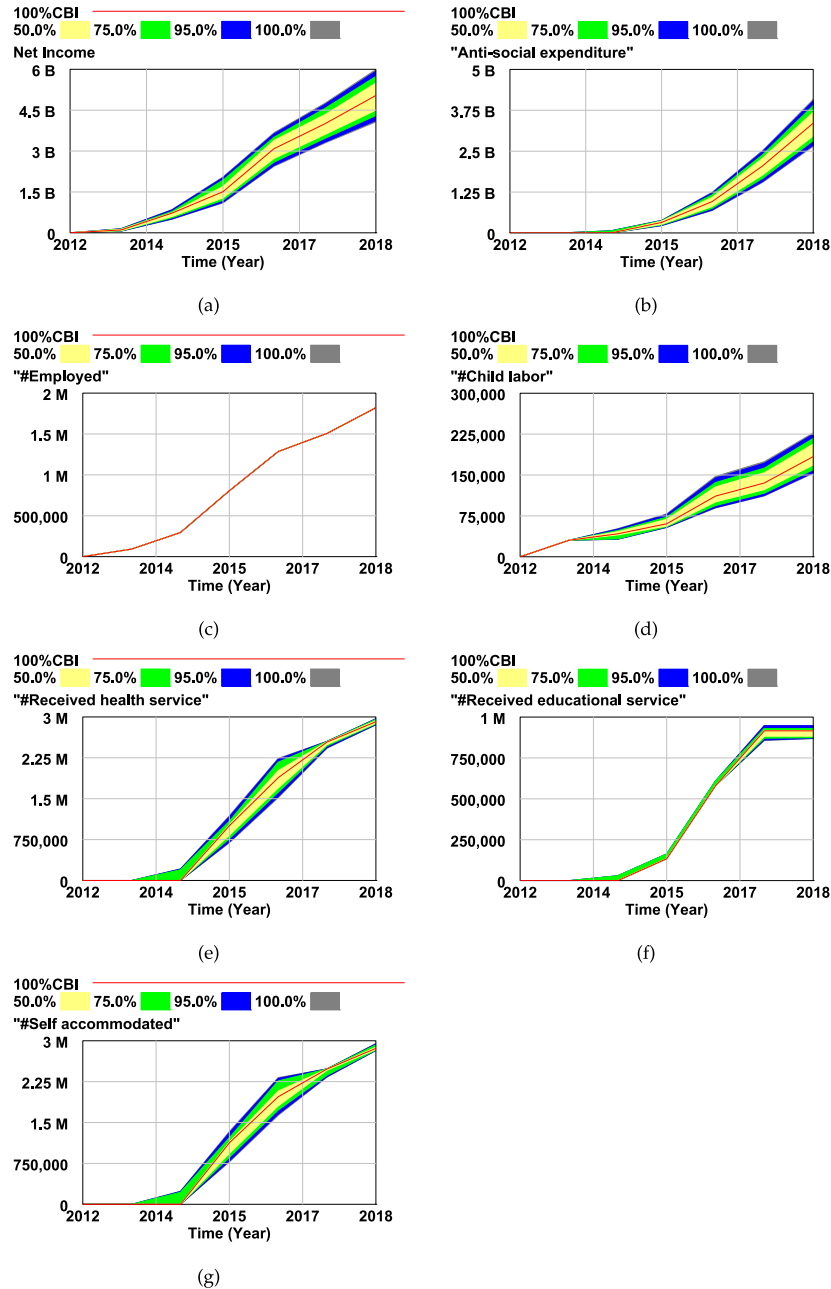


Fig. 8. A sensitivity analysis on CBIs amounts in the interval basis of  $[-100, +100\%]$  on the stock variables: (a) and (b) in terms of accumulated money over refugee's population, (c)–(g) in terms of number of Syrian refugees.

## APPENDIX B

See Fig. 8.

## ACKNOWLEDGMENT

The authors gratefully thank Prof. Roberto Revetria, Prof. Roberto Cianci and Prof. Sander de Leeuw for their valuable advice and support.

## REFERENCES

- [1] S. Belardo and J. Harrald, "A framework for the application of group decision support systems to the problem of planning for catastrophic events," *IEEE Trans. Eng. Manage.*, vol. 39 no. 4, pp. 400–411, Nov. 1992.
- [2] A. Petrillo, F. D. Felice, F. Longo, and A. Bruzzone, "Factors affecting the human error: Representations of mental models for emergency management," *Int. J. Simul. Process Model.*, vol. 12 no. 3, pp. 287–299, 2017.
- [3] S. Tufekci and W. A. Wallace, "The emerging area of emergency management and engineering," *IEEE Trans. Eng. Manage.*, vol. 45 no. 2, pp. 103–105, May 1998.
- [4] R. M. Tomasini and L. V. Wassenhove, "A framework to unravel, prioritize and coordinate vulnerability and complexity factors affecting a humanitarian response operation," *INSEAD, Faculty Res.*, Fontainebleau, France, Working Paper, 2004, pp. 1–15.
- [5] Y. Yan and K. Bissell, "The sky is falling: Predictors of news coverage of natural disasters worldwide," *Commun. Res.*, vol. 45 no. 6, pp. 862–886, 2018.
- [6] W. W. Hays, "Reduction of earthquake risk in the United States: Bridging the gap between research and practice," *IEEE Trans. Eng. Manage.*, vol. 45 no. 2, pp. 176–180, May 1998.

- [7] A. Asgari, A. Solis, F. Longo, J. Nosedal, M. C. Curinga, and L. E. Alessio, "An agent-based modeling and simulation tool for estimation of forced population displacement flows in Iraq," in *Proc. Int. Defense Homeland Secur. Simul. Workshop*, 2016, pp. 75–81.
- [8] Government of Turkey UNHCR, "Operational portal refugee situation," 2019. Accessed: Feb. 2019. [Online]. Available: <https://data2.unhcr.org/en/situations/syria/location/113>
- [9] *Global Trends: Forced Displacement in 2016*, United Nations High Commissioner for Refugees, Geneva, Switzerland, 2017.
- [10] R. Anderson, S. Gordon, and G. Mansingh, "An assessment of the potential impacts of knowledge-driven decision support in social welfare," in *Proc. IEEE Global Humanitarian Technol. Conf.*, 2014, pp. 499–505.
- [11] A. Naqvi and M. Rehm, "Simulating natural disasters, a complex systems framework," in *Proc. IEEE Conf. Comput. Intell. Financial Eng. Econ.*
- [12] F. Allahi *et al.*, "A review of system dynamics models applied in social and humanitarian researches," in *Proc. World Congr. Eng.*, 2018, pp. 4–6.
- [13] S. R. Taborn, "Assisting the poor with cash: Design and implementation of social transfer programs," in *Proc. World Bank Soc. Protection Discuss. Paper*, 2002, pp. 79–97.
- [14] *The Use of Cash and Vouchers in Humanitarian Crises*, Directorate-General for Humanitarian Aid & Civil Protection, Brussels, Belgium, 2009.
- [15] J. Hagen-Zanker, M. Ulrichs, and R. Holmes, *Cash Transfers for Refugees. An Opportunity to Bridge the Gap Between Humanitarian Assistance and Social Protection*. London, U.K.: Overseas Develop. Inst., 2017.
- [16] J. Cunha, "Testing paternalism: Cash versus in-kind transfers," *Amer. Econ. J.: Appl. Econ.*, vol. 6, pp. 195–230, 2014.
- [17] J. Currie and F. Gahvari, "Transfers in cash and in-kind: Theory meets the data," *J. Econ. Literature*, vol. 46 no. 2, pp. 333–383, 2008.
- [18] P. Harvey and S. Bailey, *Good Practice Review 11: Cash Transfer Programming in Emergencies*. London, U.K.: Overseas Develop. Inst., 2011.
- [19] S. Hall, "Cash programme review for IDPs in the Kabul Informal Settlements," Danish Refugee Council/Samuel Hall, Kabul, Afghanistan, 2013.
- [20] F. Schule *et al.*, "Food-restricted voucher or unrestricted cash? How to best support Syrian refugees in Jordan and Lebanon," Boston Consulting Group, Boston, MA, USA, 2017.
- [21] F. Bastagli *et al.*, "Cash transfers: What does the evidence say? A rigorous review of programme impact and the role of design and implementation features," Overseas Develop. Inst., London, U.K., 2016.
- [22] D. Peppiatt, J. Mitchell, and P. Holzmann, *Cash Transfers in Emergencies: Evaluating Benefits and Assessing Risks*. London, U.K.: Overseas Develop. Inst., Humanitarian Practice Netw., 2001.
- [23] A. De Janvry, F. Finan, and E. Sadoulet, "Can conditional cash transfers serve as safety nets to keep children at school and out of the labor market?" Dept. Agricultural Resour. Econ., Univ. California, Berkeley, Berkeley, CA, USA, CUDARE Working Papers 25075, 2004.
- [24] F. Allahi, R. Revetria, and R. Cianci, "Cash and voucher impact factor in humanitarian aid: A system dynamic analysis," in *Proc. Int. Conf. Model. Simul.*, 2018, pp. 17–19.
- [25] H. Khogali and P. Takhar, "Empowering women through cash relief in humanitarian contexts," *Gender Develop.*, vol. 9, no. 3, pp. 40–49, 2001.
- [26] S. Doocy, H. Tappis, and S. Doocy, "Cash-based approaches in humanitarian emergencies: A systematic review," *Campbell Systematic Rev.*, vol. 13, no. 1, pp. 1–20, 2017.
- [27] S. Bailey and P. Harvey, "State of evidence on humanitarian cash transfers," Overseas Development Institute Background Note, London, U.K., 2015.
- [28] P. Harvey, "Cash-based responses in emergencies," Humanitarian Policy Group, Overseas Development Institute, London, U.K., HPG Report 24, 2007.
- [29] S. Bailey, K. Savage, and S. Callaghan, "Cash transfers in emergencies: A synthesis of World Vision's experience and learning," Overseas Development Institute, London, U.K., 2008.
- [30] M. I. Berg, H. A. Mattinen, and G. Pattugaiian, "Examining protection and gender in cash and voucher transfers: Case studies of the world food programme (WFP) and the office of the united nations high commissioner for refugees (UNHCR) Assistance," World Food Programme, Sep. 2013, p. 142.
- [31] A. Anjomshoae, A. Hassan, N. Kunz, K. Y. Wong, and S. de Leeuw, "Toward a dynamic balanced scorecard model for humanitarian relief organization," *Performance Manage. J. Humanitarian Logistics Supply Chain Manage.*, vol. 7, no. 2, pp. 194–218, 2017.
- [32] S. Hall, "Cash-based assistance programmes for internally displaced persons in the Kabul informal settlements," 2014.
- [33] J. W. Forrester, "Industrial dynamics. A major breakthrough for decision makers," *Harvard Business Rev.*, vol. 36, no. 4, pp. 37–66, 1958.
- [34] R. Revetria, F. Oliva, and M. Mosca, "Modelling of Voltri terminal Europe in Genoa using system dynamic model simulation," in *Proc. 7th WSEAS Int. Conf. Syst. Sci. Simul. Eng.*, 2008, vol. 21, pp. 411–417.
- [35] A. G. Bruzzone *et al.*, "Human behavior simulation for smart decision making in emergency prevention and mitigation within urban and industrial environments," in *Proc. 27th EMSS Eur. Model. Simul. Symp.*, 2015.
- [36] W. K. Vaneman and K. Triantis, "Evaluating the productive efficiency of dynamical systems," *IEEE Trans. Eng. Manage.*, vol. 54, no. 3, pp. 600–612, Aug. 2007.
- [37] N. Khansari, A. Vesaghi, M. Mansouri, and A. Mostashari, "The multi-agent analysis of social progress in energy behavior: The system dynamics methodology," *IEEE Syst. J.*, vol. 11, no. 4, pp. 2062–2071, Dec. 2017.
- [38] A. Bruzzone *et al.*, "Disaster and emergency management simulation in industrial plants," in *Proc. 26th Eur. Model. Simul. Symp.*, EMSS, 2014, p. 649.
- [39] L. Cassettari, R. Mosca, A. Orfeo, R. Revetria, F. Rolando, and J. B. Morrison, "A system dynamics study of an emergency department impact on the management of hospital's surgery activities," in *Proc. Int. Conf. Simul. Model. Methodologies, Technol., Appl.*, 2013, pp. 597–604.
- [40] D. L. Cooke, "A system dynamics analysis of the Westray Mine disaster," *Syst. Dyn. Rev.: J. Syst. Dyn. Soc.*, vol. 19, no. 2, pp. 139–166, 2003.
- [41] S. P. Simonovic and S. Ahmad, "Computer-based model for flood evacuation emergency planning," *Natural Hazards*, vol. 34, no. 1, pp. 25–51, 2005.
- [42] M. Besiou, O. Stapleton, N. Van, and W. Luk, "System dynamics for humanitarian operations," *J. Humanitarian Logistics Supply Chain Manage.*, vol. 1, no. 1, pp. 78–103, 2011.
- [43] P. Gonçalves, "Balancing provision of relief and recovery with capacity building in humanitarian operations," *Oper. Manage. Res.*, vol. 4, no. 1/2, pp. 39–50, 2011.
- [44] Y. Cruz-Cantillo, "A system dynamics approach to humanitarian logistics and the transportation of relief supplies," *Int. J. Syst. Dyn. Appl.*, vol. 3, no. 3, pp. 96–126, 2014.
- [45] N. Kunz, G. Reiner, and S. Gold, "Investing in disaster management capabilities versus pre-positioning inventory: A new approach to disaster preparedness," *Int. J. Prod. Econ.*, vol. 157, pp. 261–272, 2014.
- [46] E. Briano, C. Caballini, P. Giribone, and R. Revetria, "Using a system dynamics approach for designing and simulation of short life-cycle products supply chain," in *Proc. 4th WSEAS Int. Conf. Comput. Eng. Appl.*, 2010, pp. 27–143.
- [47] B. Abu Hamad, N. Jones, F. Samuels, I. Gercama, E. Presler-Marshall, and G. Plank, "A promise of tomorrow: The effects of UNHCR and UNICEF cash assistance," Overseas Development Institute, London, U.K., 2017.
- [48] E. Sloane, "The impact of Oxfam's cash distributions on Syrian refugee households in host communities informal settlements Jordan," Oxfam, Jan. 2014, p. 29.
- [49] P. Pozarny and B. Davis, "The impact of social cash transfer programmes on community dynamics in Sub-Saharan Africa," Food and Agriculture Organization of the United Nations, Rome, Italy, 2015.
- [50] N. Giordano, K. Dunlop, D. Sardiwal, and T. Gabay, "Evaluation synthesis of UNHCR's cash based interventions in Jordan," United States Agency for International Development, Washington, DC, USA, 2017.
- [51] P. Harvey, "Cash and vouchers in emergencies," Humanitarian Policy Group Discussion Paper, Overseas Development Institute, London, U.K., 2005.
- [52] F. Battistin, "Lebanon cash consortium (LCC) impact evaluation of the multipurpose cash assistance programme," ACTED/CARE/International Rescue Committee/Save the Children/World Vision, Mar. 2016, p. 52.
- [53] I. L. O., "Child labour in the urban informal sector in three governorates of Jordan," International Labour Organisation, Geneva, Switzerland, 2014.
- [54] C. Lehmann and D. Masterson, "Emergency economies: The impact of cash assistance in Lebanon," International Rescue Committee, New York, NY, USA, 2014.
- [55] P. Harvey and S. Bailey, "Cash transfer programming in emergencies. Humanitarian practice network," Overseas Development Institute, London, U.K., 2011.

- [56] S. Doocy, M. Gabriel, S. Collins, C. Robinson, and P. Stevenson, "Implementing cash for work programmes in post-tsunami Aceh: Experiences and lessons learned," *Disasters*, vol. 30, no. 3, pp. 277–296, 2006.
- [57] R.L. Blumberg, "Gender, microenterprise, performance, and power: Case studies from the Dominican Republic, Ecuador, Guatemala, and, and Swaziland," in *Women in the Latin American Development Process*, C. E. Bose and E. Acosta-Belen, Eds. Philadelphia, PA, USA: Temple Univ. Press, 1995, pp. 194–226.
- [58] D. Evans and A. Popova, "Cash transfers and temptation goods: A review of global evidence," Policy Research Working Paper 6886, 2014.
- [59] G. B. Oxfam, "Cash-transfer programming in emergencies," Pantaleo Preti and Susanne Jaspars, Ed. Oxford, OX4 2JY, UK: Oxfam GB, Oxfam House, John Smith Drive, Cowley, 2006.
- [60] "Guidelines for cash transfer programming," International Committee of the Red Cross, Geneva, Switzerland, 2007.
- [61] S. Devereux and P. Jere, "Choice, dignity and empowerment? Cash and food transfers in Swaziland. An evaluation of save the children's emergency drought response, 2007/08," Department for International Development, London, U.K., 2008.
- [62] "Social transfers and chronic poverty: Emerging evidence and the challenge ahead," Department for International Development, London, U.K., 2005.
- [63] K. Jacobsen and S. Fratzke, *Building Livelihoods Opportunities for Refugees Populations*. Washington, DC, USA: Migration Policy Inst., 2016.
- [64] C. Cabot-Venton, S. Pongracz, and S. Bailey, "Value for money of cash transfers in emergencies," Department for International Development, London, U.K., 2015.
- [65] D. Gilligan, A. Margolies, E. Quiñones, and S. Roy, "Impact evaluation of cash and food transfers at early childhood development centers," International Food Policy Research Institute, Washington, DC, USA, Tech. Rep. WFP/UNICEF/IFPRI, May, 2016, p. 121, doi: [10.7910/DVN/3REX7R](https://doi.org/10.7910/DVN/3REX7R).
- [66] P. Creti, *The Impact of Cash Transfers on Local Markets (A Case Study of Unstructured Markets in Northern Uganda)*. Oxford, U.K.: Cash Learn. Partnership, 2010.
- [67] B. Boland and A. Gaffney, "Understanding the intersection between TANF and refugee cash assistance services: Findings from a survey of state refugee coordinator," Office Planning, Res., Eval., Washington, DC, USA, OPRE Report 2017-75, 2017.
- [68] H. G. Villasanti and K. M. Passino, "Feedback controllers as financial advisors for low-income individuals," *IEEE Trans. Control Syst. Technol.*, vol. 25 no. 6, pp. 2194–2201, Nov. 2017.
- [69] A. Acheampong, "Local integration of refugees: Reflections from Liberian refugees in Ghana," Master's Programme for Peace and Conflict Transformation, University of Norway, Faculty of Humanities, Social Science and Education Centre for Peace Studies, Jun. 2015. [Online]. Available: <https://hdl.handle.net/10037/9141>
- [70] C. P. Rees, S. Hawkesworth, S. E. Moore, B. L. Dondeh, and S. A. Unger, "Factors affecting access to healthcare: An observational study of children under 5 years of age presenting to a rural Gambian primary healthcare centre," *PLoS One*, vol. 11, no. 6, 2016, Art. no. e0157790.
- [71] F. Pega, S. Y. Liu, S. Walter, and S. K. Lhachimi, "Unconditional cash transfers for assistance in humanitarian disasters: Effect on use of health services and health outcomes in low- and middle-income countries," *Cochrane Database Systematic Rev.*, vol. 9, Sep. 2015.
- [72] S. Schira, *Emergency Livelihood Recovery Intervention (ELRI): Fafi District-Garissa County*, United States Agency for International Development, Washington, DC, USA, 2011.
- [73] A. M. Hadcroft, "Lessons learned: Humanitarian response in Haiti—Food security and sanitation component," Inter-Agency Standing Committee: Haiti Earthquake Response, 6-Month Report, Red Crescent, Jan. 2010, p. 44.
- [74] "Toolkit for practical cooperation on resettlement. Community outreach—Outreach to host communities: Definitions and FAQs," United Nations High Commissioner for Refugees, Geneva, Switzerland, 2011.
- [75] S. Dunn, M. Brewin, and A. Sceck, "Cash and voucher monitoring group final monitoring report of the Somalia cash and voucher transfer programme," Overseas Development Institute, London, U.K., 2012.
- [76] K. Macours, N. Schady, and R. Vakis, "Cash transfers, behavioral changes, and cognitive development in early childhood: Evidence from a randomized experiment," World Bank, Washington, DC, USA, Working Paper, 2008.
- [77] R. Attah, V. Barca, A. Kardan, I. MacAuslan, F. Merttens, and L. Pellerano, "Can social protection affect psychosocial wellbeing and why does this matter? Lessons from cash transfers in Sub-Saharan Africa," *J. Develop. Stud.*, vol. 52, pp. 1115–1131, 2016.
- [78] M. Hidrobo, J. Hoddinott, A. Peterman, A. Margolies, and V. Moreira, "Cash, food or vouchers? Evidence from a randomized experiment in northern Ecuador," *J. Develop. Econ.*, vol. 107, pp. 144–156, 2014.
- [79] J. Crisp, J. Janz, J. Riera, and S. Samy, "Surviving in the city: A review of UNHCR's operation for Iraqi refugees in urban areas of Jordan, Lebanon and Syria," United Nations High Commissioner for Refugees, Geneva, Switzerland, 2009.
- [80] Vensim<sup>®</sup> DSS for Windows Version 7.0 Copyright 1998-2017, Ventana Systems, Inc., Harvard, MA, USA, Registered to: Information systems, Nottingham Trent University, Nottingham, U.K., 2017.
- [81] "Vulnerability assessment of Syrian refugees in Lebanon 2015 report," UNHCR, WFP, and UNICEF: Beirut, Lebanon, 2015.
- [82] J. C. Kane and M. C. Greene, "Addressing alcohol and substance use disorders among refugees: A desk review of intervention approaches," United Nations High Commissioner for Refugees, Geneva, Switzerland, 2018.
- [83] K. Parvan, H. Rahmandad, and A. Haghani, "Inter-phase feedbacks in construction projects," *J. Oper. Manage.*, vol. 39, pp. 48–62, 2015.
- [84] J. D. Sterman, *Business Dynamics: Systems Thinking and Modeling for a Complex World*. New York, NY, USA: McGraw-Hill, 2000.
- [85] WFP, "Refugees in Turkey. Livelihood survey findings," Turkish Red Crescent, Ankara, Turkey, World Food Programme, Rome, Italy, 2019.
- [86] A. Saleh, S. Aydin, and O. Koçak, "A comparative study of Syrian refugees in Turkey, Lebanon, and Jordan: Healthcare access and delivery," *OPUS Uluslararası Toplum Araştırmaları Dergisi*, vol. 8 no. 14, pp. 448–464, 2018.
- [87] S. Doocy, E. Lyles, L. Akhu-Zaheya, A. Burton, and G. Burnham, "Health service access and utilization among Syrian refugees in Jordan," *Int. J. Equity Health*, vol. 15 no. 1, 2016, Art. no. 108.
- [88] S. Yalçın, "Syrian child workers in Turkey," *Turkish Policy Quart.*, vol. 15, no. 3, pp. 89–98, 2016.
- [89] "Child labour within the Syrian refugee response: A regional strategic framework for action," United States Agency for International Development, Washington, DC, USA, 2019.
- [90] C. Kizil, "Turkey's policy on employment of Syrian refugees and its impact on the Turkish labour market," in *Turkish Migration 2016 Selected Papers*. London, U.K.: Transnational Press London, 2016, p. 164.
- [91] T. Tören, "Syrian refugees in the Turkish labour market," International Center for Development and Decent Work, Kassel, Germany, Working Papers, 2018.
- [92] P. Armstrong and K. Jacobsen, "Addressing vulnerability? Cash transfer programming and protection outcomes for out-of-camp Syrian refugees: An analysis of the Danish Refugee Council's e-card programming in southern Turkey," Danish Refugee Council, Copenhagen, Denmark, 2015.
- [93] W. Carlier, "The widening educational gap for Syrian refugee children," KidsRights Foundation, Amsterdam, The Netherlands, Tech. Rep., Mar. 2018, p. 28.
- [94] UNHCR, "Turkey education sector achievements," United Nations High Commissioner for Refugees, Geneva, Switzerland, 2018.
- [95] R. Oliva, "Model calibration as a testing strategy for system dynamics models," *Eur. J. Oper. Res.*, vol. 151, no. 3, pp. 552–568, 2003.
- [96] M. J. D. Powell, "An efficient method for finding the minimum of a function of several variables without calculating derivatives," *Comput. J.*, vol. 7, no. 2, pp. 155–162, 1964.
- [97] R. Mohyidin, "The economic benefits of having an inclusive refugee policy," 2019. [Online]. Available: <https://www.trtworld.com/turkey/the-economic-benefits-of-having-an-inclusive>
- [98] S. Dadouch, "Despite talk of returns, Turkey quietly works to integrate Syrian refugees," 2019. [Online]. Available: <https://uk.reuters.com/article/uk-mideast-crisis-syria-turkey-insight/despite>
- [99] International Crisis Group *et al.*, "Turkey's Syrian refugees: Defusing metropolitan tensions," Rep. 241, 2018. [Online]. Available: <https://www.crisisgroup.org/europe-central-asia/western-europemediterranean/>
- [100] S. Starr, "Syrians in Turkey face anger and violence," 2018. [Online]. Available: <https://www.irishtimes.com/news/world/europe/syrians-in-turkey-face-anger-an>
- [101] K. F. McCarthy and M. Hanson, *Post-Katrina Recovery of the Housing Market Along the Mississippi Gulf Coast*. Santa Monica, CA, USA: Rand Corp., 2008.
- [102] I. Idris, "Economic impacts of humanitarian aid," *Diakses Dari*, 2016. [Online]. Available: <https://www.google.co.id/url>