



Kent Academic Repository

Villa, Cristiano, Leisen, Fabrizio and Rossini, Luca (2019) *Loss-based approach to two-piece location-scaled distributions with applications to dependent data*. *Statistical Methods & Applications* . ISSN 1618-2510.

Downloaded from

<https://kar.kent.ac.uk/74608/> The University of Kent's Academic Repository KAR

The version of record is available from

<https://doi.org/10.1007/s10260-019-00481-x>

This document version

Publisher pdf

DOI for this version

Licence for this version

CC BY (Attribution)

Additional information

Versions of research works

Versions of Record

If this version is the version of record, it is the same as the published version available on the publisher's web site. Cite as the published version.

Author Accepted Manuscripts

If this document is identified as the Author Accepted Manuscript it is the version after peer review but before type setting, copy editing or publisher branding. Cite as Surname, Initial. (Year) 'Title of article'. To be published in *Title of Journal* , Volume and issue numbers [peer-reviewed accepted version]. Available at: DOI or URL (Accessed: date).

Enquiries

If you have questions about this document contact ResearchSupport@kent.ac.uk. Please include the URL of the record in KAR. If you believe that your, or a third party's rights have been compromised through this document please see our [Take Down policy](https://www.kent.ac.uk/guides/kar-the-kent-academic-repository#policies) (available from <https://www.kent.ac.uk/guides/kar-the-kent-academic-repository#policies>).



Loss-based approach to two-piece location-scale distributions with applications to dependent data

Fabrizio Leisen¹ · Luca Rossini²  · Cristiano Villa¹

Accepted: 15 June 2019
© The Author(s) 2019

Abstract

Two-piece location-scale models are used for modeling data presenting departures from symmetry. In this paper, we propose an objective Bayesian methodology for the tail parameter of two particular distributions of the above family: the skewed exponential power distribution and the skewed generalised logistic distribution. We apply the proposed objective approach to time series models and linear regression models where the error terms follow the distributions object of study. The performance of the proposed approach is illustrated through simulation experiments and real data analysis. The methodology yields improvements in density forecasts, as shown by the analysis we carry out on the electricity prices in Nordpool markets.

Keywords Bayesian inference · Loss-based prior · Objective Bayes · Electricity prices

1 Introduction

Two-piece location-scale models have been mainly used for modeling data exhibiting departures from symmetry. Moreover, some specific two-piece location-scale distributions have been employed in finance to represent the errors in GARCH-type models, see Zhu and Zinde-Walsh (2009), Zhu and Galbraith (2011). Different mechanisms have been presented to obtain skewed distributions by modifying symmetric distri-

✉ Luca Rossini
luca.rossini87@gmail.com

Fabrizio Leisen
fabrizio.leisen@gmail.com

Cristiano Villa
C.Villa-88@kent.ac.uk

¹ University of Kent, Canterbury, UK

² Department of Econometrics and Operations Research, School of Business and Economics, Vrije Universiteit Amsterdam, De Boelelaan 1105, 1081 HV Amsterdam, The Netherlands

butions (Azzalini 1985; Fernandez and Steel 1998; Mudholkar and Hutson 2000). Recently, the objective Bayesian literature focused on this class of models. Firstly, Rubio and Steel (2014) derived the Jeffreys rule prior and the independence Jeffreys priors for different families of skewed distributions. They show that Jeffreys priors for some distributions, such as the skewed Student- t , lead to improper posterior distributions. Conversely, reference priors have shown to be more suitable for the above class of distributions, see Tu et al. (2016).

In this work, we introduce a novel objective prior for some distributions of the class of two-piece location-scale models, such as the skewed exponential power distribution (SEPD) and the skewed generalized logistic distribution (SGLD). Recently, SEPD has been introduced in regression and stochastic volatility models by Naranjo et al. (2015) and Kobayashi (2016). Moreover, SEPD has been used as working likelihood in the quantile regression analysis by Bernardi et al. (2018) and for Bayesian Conditional Autoregressive Risk Measures by Bernardi et al. (2019). Following Leisen et al. (2017), we introduce a Bayesian approach obtained by applying the loss-based prior discussed in Villa and Walker (2015). In particular, we derive the loss-based prior for the parameter that controls heaviness of the tails of the distribution.

In the literature, the asymmetric Laplace distribution (ALD) or the asymmetric Student- t distribution (AST) have gained importance in a wide range of disciplines, such as economics (Zhao et al. 2007; Leisen et al. 2017), financial analysis (Zhu and Galbraith 2010; Kozubowski and Podgorski 2001; Harvey and Lange 2016) and microbiology (Rubio and Steel 2011). However, the application of the SEPD and SGLD to represent the errors of time series and regression models, has received limited attention in the context of objective Bayesian analysis. The aim of this paper is to contribute to the above research area by introducing an information theoretical approach to address inference on the tail parameter of the two skewed distributions.

As currently there is a growing interest in electricity prices [see Weron (2014) and Nowotarski and Weron (2018) for a review], we will contribute to the analysis of monthly electricity prices in the Nordpool market, in particular for Denmark and Finland through an autoregressive model with errors distributed as a SEPD. Compared to the standard frequentist autoregressive approach, which is the benchmark in the literature (see Conejo et al. (2005), Misiorek et al. (2006) and Maciejowska and Weron (2015)), we can show that our methodology improves the density forecasting. In addition, we consider a linear regression model where the residuals are SGLD with a loss-based prior on the tail parameter. We illustrate the above model by studying the Small Cell Cancer data set in Ying et al. (1995) and in Rubio and Yu (2017).

The structure of this document is as follows. In Sect. 2 we introduce the general two-piece location-scale distribution and discuss special distributions further developed in the paper, such as the SEPD and the SGLD. Section 3 focuses on the derivation of the objective priors for the parameters of the models here considered. In Sect. 4 we analyse the frequentist properties of the proposed prior using data simulated from regression models and time series models. Section 5 deals with real data, in particular we model electricity prices and a cancer dataset. Final discussion points and conclusions are presented in Sect. 6.

2 Two-piece location-scale models

As described in Rubio and Steel (2014), in the simple univariate location-scale model it is possible to induce skewness by the use of different scales on both sides of the model and using three different scalar parameters. Firstly, we introduce a general definition of two-piece location-scale models and then we describe different distributions of this family. The general two-piece location-scale density has the following form:

$$g(y|\mu, \sigma_1, \sigma_2, \alpha) = \frac{1}{\sigma_1} f\left(\frac{y-\mu}{2\alpha\sigma_1}\right) \mathbb{1}_{(-\infty, \mu)}(y) + \frac{1}{\sigma_2} f\left(\frac{y-\mu}{2(1-\alpha)\sigma_2}\right) \mathbb{1}_{(\mu, \infty)}(y), \quad (1)$$

where f is an absolutely continuous distribution on \mathbb{R} , $\mu \in \mathbb{R}$ is the location parameter, $\sigma_1 \in \mathbb{R}^+$ and $\sigma_2 \in \mathbb{R}^+$ are the separate scale parameters and $\alpha \in (0, 1)$ is the skewness parameter. In this paper, we follow Rubio and Steel (2014) and assume f to be symmetric with a single mode at zero, which means that μ is the mode of the density in (1). Hereafter, we assume $\sigma_1 = \sigma_2 = \sigma$ and we focus on three particular two-piece location-scale models: the skewed Student- t distribution (SST), the skewed exponential power distribution (SEPD) and the skewed generalized logistic distribution (SGLD). These distributions depend on an additional parameter p which controls the behaviour of the tails. The SST is defined as follows.

Definition 2.1 (*Skewed Student- t distribution*) Assume $\mu \in \mathbb{R}$ the location parameter, $\sigma > 0$ the scale parameter, $\alpha \in (0, 1)$ the skewness parameter and $p > 0$ the tail parameter. We define the skewed Student- t distribution as

$$f_{\text{SST}}(y|\alpha, p, \mu, \sigma) = \begin{cases} \frac{K(p)}{\sigma} \left[1 + \frac{1}{p} \left(\frac{y-\mu}{2\alpha\sigma} \right)^2 \right]^{-\frac{p+1}{2}}, & y \leq \mu, \\ \frac{K(p)}{\sigma} \left[1 + \frac{1}{p} \left(\frac{y-\mu}{2(1-\alpha)\sigma} \right)^2 \right]^{-\frac{p+1}{2}}, & y > \mu, \end{cases} \quad (2)$$

where

$$K(p) = \frac{\Gamma[(p+1)/2]}{\sqrt{\pi p} \Gamma(p/2)}$$

is a function depending on the tail parameter p .

For a more detailed description of the properties of the SST distribution, see Fernandez and Steel (1998) and Zhu and Galbraith (2010). The SST has some special cases: if $\alpha = 1/2$, it is the usual Student- t with p degrees of freedom; if $p = 1$, is the skewed Cauchy, while for $p \rightarrow \infty$, it converges to the skewed normal distribution. Leisen et al. (2017) have proposed a loss-based prior for the tail parameter p of the SST distribution. Therefore, hereafter we will give limited attention to this distribution and we will focus on the remaining two distributions.

The first distribution of interest in our analysis accommodates heavy tails as well as skewness and is defined as follows.

Definition 2.2 (*Skewed exponential power distribution*) Let us define $\mu \in \mathbb{R}$, the location parameter, $\sigma > 0$, the scale parameter, $\alpha \in (0, 1)$ the skewness parameter and $p > 0$ the tail parameter. The skewed exponential power distribution has the form

$$f_{\text{SEPD}}(y|\alpha, p, \mu, \sigma) = \begin{cases} \frac{K(p)}{\sigma} \exp \left\{ -\frac{1}{p} \left| \frac{y-\mu}{2\alpha\sigma} \right|^p \right\}, & y \leq \mu, \\ \frac{K(p)}{\sigma} \exp \left\{ -\frac{1}{p} \left| \frac{y-\mu}{2(1-\alpha)\sigma} \right|^p \right\}, & y > \mu, \end{cases} \tag{3}$$

with normalizing constant

$$K(p) = \frac{1}{2p^{1/p}\Gamma\left(1 + \frac{1}{p}\right)}.$$

The SEPD has been studied in Fernandez and Steel (1998), Komunjer (2007) and Zhu and Zinde-Walsh (2009). In detail, for $p = 1$ the SEPD becomes a skewed Laplace distribution, and for $p = 2$ is a skewed normal distribution. For values of $p \rightarrow \infty$, we have that the SEPD reduces to an uniform distribution.

The second distribution we will study, is built on a Beta transformation of the logistic distribution [as described in Jones (2004)]:

$$f(x) = p[S(x)]s(x), \tag{4}$$

where $p(\cdot)$ is the probability density function of a Beta distribution with parameters (p, p) and $S(x)$ and $s(x)$ are, respectively, the cumulative distribution function and the probability density function of the logistic distribution

$$s(x) = \frac{\exp \left\{ -\frac{x-\mu}{\sigma} \right\}}{\sigma \left(1 + \exp \left\{ -\frac{x-\mu}{\sigma} \right\} \right)^2}, \quad x \in \mathbb{R}^*.$$

Note that, $f(x)$ in (4) is also known as the logistic distribution of the III type. Its skewed version is defined as follows.

Definition 2.3 (*Skewed generalized logistic distribution*) Assume $\mu \in \mathbb{R}$, the location parameter, $\sigma > 0$, the scale parameter, $\alpha \in (0, 1)$ the skewness parameter and $p > 0$ the tail parameter. We define the skewed generalized logistic distribution as

$$f_{\text{SGLD}}(y|\alpha, p, \mu, \sigma) = \begin{cases} \frac{1}{\sigma B(p,p)} \frac{\left(\exp \left\{ -\frac{y-\mu}{2\alpha\sigma} \right\} \right)^p}{\left(1 + \exp \left\{ -\frac{y-\mu}{2\alpha\sigma} \right\} \right)^{2p}}, & y \leq \mu, \\ \frac{1}{\sigma B(p,p)} \frac{\left(\exp \left\{ -\frac{y-\mu}{2(1-\alpha)\sigma} \right\} \right)^p}{\left(1 + \exp \left\{ -\frac{y-\mu}{2(1-\alpha)\sigma} \right\} \right)^{2p}}, & y > \mu, \end{cases} \tag{5}$$

where $B(p, p)$ is the beta function.

3 The objective prior distribution

Through Bayes theorem, we obtain the posterior, given data $\mathbf{x} = (x_1, \dots, x_n)$, by combining the likelihood function and the prior. That is

$$\pi(\alpha, p, \mu, \sigma | \mathbf{x}) \propto L(\mathbf{x} | \alpha, p, \mu, \sigma) \pi(\alpha, p, \mu, \sigma), \tag{6}$$

where $L(\mathbf{x} | \alpha, p, \mu, \sigma) = \prod_{i=1}^n f(x_i | \alpha, p, \mu, \sigma)$ is the likelihood function, and $\pi(\alpha, p, \mu, \sigma)$ is the prior distributions for all the parameters of the two-piece location-scale. Assuming some degree of independence of prior knowledge about the parameters, the prior distribution can be factorized as

$$\pi(\alpha, p, \mu, \sigma) \propto \pi(p | \alpha, \mu, \sigma) \pi(\mu, \sigma) \pi(\alpha). \tag{7}$$

In the next section we will show that for the models under consideration, the prior on the parameter p does not depend on α, μ and σ . As such, we can write $\pi(p | \alpha, \mu, \sigma) = \pi(p)$.

3.1 Loss-based prior for p

The main focus of this paper is to make inference on the parameter p . Without loss of generality, p is considered discrete taking values in \mathbb{N} . This is motivated by the fact that seldom the amount of information about p in the data is sufficient to discern between distributions that differ in p less than one. For instance, this is a well known fact for the Student- t distribution.

Villa and Walker (2015) introduced a method for specifying an objective prior for discrete parameters. Consider the general two-piece location scale distribution

$$f_p^{\alpha, \mu, \sigma}(y) = \begin{cases} \frac{1}{\sigma} f_p\left(\frac{y-\mu}{2\alpha\sigma}\right), & y \leq \mu, \\ \frac{1}{\sigma} f_p\left(\frac{y-\mu}{2(1-\alpha)\sigma}\right), & y > \mu, \end{cases} \tag{8}$$

which corresponds to the SEPD if f_p is the exponential power distribution and to the SGLD if f_p coincides with the distribution displayed in Eq. (4).

The density function $f_p^{\alpha, \mu, \sigma}(y)$ is characterised by the unknown discrete parameter p . The idea is to assign a *worth* to each parameter value by objectively measuring what is lost if the value is removed, and it is the true one. The loss is evaluated by applying the well known result in Berk (1966) stating that, if a model is misspecified, the posterior distribution asymptotically accumulates on the model which is the nearest to the true one, in terms of the Kullback–Leibler divergence. Therefore, the *worth* of the parameter value p is represented by the Kullback–Leibler divergence $D_{\text{KL}}\left(f_p^{\alpha, \mu, \sigma} \parallel f_{p'}^{\alpha, \mu, \sigma}\right)$, where $p' \neq p$ is the parameter value that minimizes the divergence. To link the *worth* of a parameter value to the prior mass, Villa and Walker (2015) use the self-information loss function. This particular type of loss function measures the loss in information contained in a probability statement (Merhav and Feder 1998). As we now have, for

each value of p , the loss in information measured in two different ways, we simply equate them obtaining the loss-based prior:

$$\pi(p) \propto \exp \left\{ \min_{p' \neq p} D_{\text{KL}} \left(f_p^{\alpha, \mu, \sigma} \parallel f_{p'}^{\alpha, \mu, \sigma} \right) \right\} - 1, \tag{9}$$

where

$$D_{\text{KL}} \left(f_p^{\alpha, \mu, \sigma} \parallel f_{p'}^{\alpha, \mu, \sigma} \right) = \int f_p^{\alpha, \mu, \sigma}(y) \log \left\{ \frac{f_p^{\alpha, \mu, \sigma}(y)}{f_{p'}^{\alpha, \mu, \sigma}(y)} \right\} dy$$

is the Kullback–Leibler divergence.

Following Leisen et al. (2017), we introduce a theorem (which proof is in “Appendix A”) to study the form of the Kullback–Leibler divergence and consequently of the loss-based prior for the tail parameter p .

Theorem 3.1 *Let $f_p^{\alpha, \mu, \sigma}$ be the density function displayed in Eq. (8) which could be either the SEPD or the SGLD. Then,*

$$D_{\text{KL}} \left(f_p^{\alpha, \mu, \sigma} \parallel f_{p'}^{\alpha, \mu, \sigma} \right) = D_{\text{KL}} \left(f_p^{\alpha=0.5, \mu=0, \sigma=1} \parallel f_{p'}^{\alpha=0.5, \mu=0, \sigma=1} \right)$$

for every $p \geq 1$.

In other words, Theorem 3.1 shows that the loss-based prior distribution for the tail parameter p does not depend from the skewness parameter α , the location μ and the scale σ . Hence, the prior can be written as $\pi(p|\alpha, \mu, \sigma) = \pi(p)$.

The following theorem derives the closed form of the Kullback–Leibler divergence for the SEPD. Its proofs, which can be found in “Appendix A”, leveraged on the result in Theorem 3.1.

Theorem 3.2 *Let $f_p^{\alpha, \mu, \sigma}$ be the SEPD, with skewness parameter $\alpha \in (0, 1)$, location parameter $\mu \in \mathbb{R}$, scale parameter $\sigma \in \mathbb{R}_+$ and tail parameter $p \in \{1, 2, \dots\}$ as described in Eq. (3). Then, the Kullback–Leibler divergence between two SEPDs that differ in the tail parameter only is:*

$$D_{\text{KL}} \left(f_p^{\alpha, \mu, \sigma} \parallel f_{p'}^{\alpha, \mu, \sigma} \right) = \log K(p) - \log K(p') - p^{-1} + \frac{p^{\frac{p'}{p}}}{p'} \frac{\Gamma \left(\frac{p'+1}{p} \right)}{\Gamma \left(\frac{1}{p} \right)}.$$

By applying the result of Theorem 3.2 into Eq. (9), we can then derive the loss-based prior for the SEPD. From Table 5 we see that the minimum Kullback–Leibler divergence is attained for $p' = p + 1$ when $p \leq 3$ and for $p' = p - 1$ for $p > 3$. As such, the prior on p is:

$$\pi(p) \propto \begin{cases} \exp \left[\log K(p) - \log K(p+1) - p^{-1} + \frac{p^{\frac{p+1}{p}}}{p+1} \frac{\Gamma\left(\frac{p+2}{p}\right)}{\Gamma\left(\frac{1}{p}\right)} \right] - 1, & \text{for } p \leq 3, \\ \exp \left[\log K(p) - \log K(p-1) - p^{-1} + \frac{p^{\frac{p-1}{p}}}{p-1} \frac{1}{\Gamma\left(\frac{1}{p}\right)} \right] - 1, & \text{for } p > 3. \end{cases}$$

We have numerically verified that the above prior for p is proper for $p = \{1, 2, 3, \dots, \infty\}$, therefore yielding a proper posterior.

To derive the loss-based prior for the parameter p of the SGLD, we consider the following Theorem 3.3 (which proof is in the ‘‘Appendix A’’), giving the expression of the Kullback–Leibler divergence between two SGLDs.

Theorem 3.3 *Let $f_p^{\alpha, \mu, \sigma}$ be the SGLD with skewness parameter $\alpha \in (0, 1)$, location parameter $\mu \in \mathbb{R}$, scale parameter $\sigma \in \mathbb{R}_+$ and tail parameter $p \in \{1, 2, \dots\}$, respectively as described in Eq. (5). Then, the Kullback–Leibler divergence between two SGLDs that differ in the tail parameter only is:*

$$D_{KL} \left(f_p^{\alpha, \mu, \sigma} \parallel f_{p'}^{\alpha, \mu, \sigma} \right) = \log \left[\frac{B(p', p')}{B(p, p)} \right] + 2(p - p')[\psi(p) - \psi(2p)], \quad (10)$$

where $\psi(p)$ is the digamma function.

From Table 6 we see that the Kullback–Leibler divergence between two SGLD is minimised for $p' = p + 1$, and thus the loss-based prior is as follows:

$$\pi(p) \propto \frac{p}{2(2p+1)} \exp \{2[\psi(2p) - \psi(p)]\} - 1, \quad (11)$$

which is proper, as we have numerically verified.

3.2 Non-informative prior for the parameters α, μ and σ .

In line with the minimally informative focus of the paper, we have selected objective priors for the other parameters of the considered distributions. That is, we have considered Jeffreys priors for α, μ and σ . As mentioned at the beginning of Sect. 3, we assume that the prior information on the true value of the parameters is independent. As such, we can consider, not only $\pi(\alpha)$ on its own, but we can also factorise the prior of the location and the scale parameters; that is $\pi(\mu, \sigma) = \pi(\mu)\pi(\sigma)$. The Jeffreys prior for μ and σ is then proportional to $1/\sigma$, which is obtained by considering the Jeffreys prior for a location parameter, $\pi(\mu) \propto 1$, and the Jeffreys prior for a scale parameter, $\pi(\sigma) \propto 1/\sigma$. Both these priors are extensively discussed in Jeffreys (1961). It is worthwhile to note that the above considerations recover the well-known reference prior for the pair (μ, σ) (Berger et al. 2009).

Finally, the Jeffreys prior for the skewness parameter α has been introduced in Rubio and Steel (2014), and it shows to be a Beta distribution with both parameters equal to $1/2$. That is $\pi(\alpha) \sim \text{Be}(1/2, 1/2)$.

4 Simulation studies

It is important to analyse the performances of objective priors by studying the frequentist properties of the posterior distributions they yield to. As such, the aim of this section is to present simulation studies concerning the objective priors for p , as defined in Sect. 3, for the considered two-piece location-scale models discussed in this work. In particular, we study time series where the residual error terms follow a SEPD and regression models with error terms that follow a SGLD.

4.1 SEPD simulation study

In this simulation exercise, we study an autoregressive (AR) model, where we assume the lag order equal to 1. Therefore, the AR model has the following form:

$$y_t = \phi_1 y_{t-1} + \varepsilon_t, \quad t = 1, \dots, T, \quad (12)$$

where we assume that the residual errors ε_t follow a $\text{SEPD}(\alpha, p, \mu, \sigma)$ with $p = 1, \dots, 20$, $\alpha \in \{0.3, 0.5, 0.8\}$, $\mu = 0$ and $\sigma = 1$. The parameter ϕ_1 is set equal to 0.5. Finally, we consider sample sizes of $T = 100$ and $T = 250$. The analysis has been carried by assuming the loss-based prior on p as defined in Sect. 3.1. The prior for the remaining three parameters of the SEPD, has been fixed as explained in Sect. 3.2. For the parameter ϕ_1 , we assume a Zellner prior (Zellner 1986) with $g = T$, that is $N(0, T(\sum_{i=1}^{T-1} y_i^2)^{-1})$. For each of the above scenarios, we have generated 250 random samples, as described in the ‘‘Appendix C’’, and computed the frequentist coverage of the 95% posterior credible interval for p , and the relative square root of the mean squared error $\sqrt{\text{MSE}(p)}/p$. The coverage measures the frequency of which the true parameter value for p is included in the 95% credible interval of the posterior distribution of the parameter. Ideally, this value should be close to 0.95. The MSE allows to have a measure of the accuracy of the estimate, intended as the posterior mean for p .

As the yielded posterior distribution for the parameters is not analytically tractable, it is necessary to adopt Markov Chain Monte Carlo (MCMC) methods. In particular, we have implemented a Metropolis within Gibbs sampler. For each of the above 250 samples, we have run 20,000 iterations of the MCMC algorithm and discarded the first 5000 iterations as burn-in period. The results of the frequentist analysis of the posterior of p are plotted in Fig. 1. Examining the coverage, we note that the samples with $T = 100$ have a frequency closer to the nominal value (i.e. 95%) compared to the samples with $T = 250$; this is more obvious for relatively large values of p . The MSE behaves in line with other frequentist studies for tail parameters (such as for the Student- t and the skewed Student- t), with a smaller index value for larger sample size

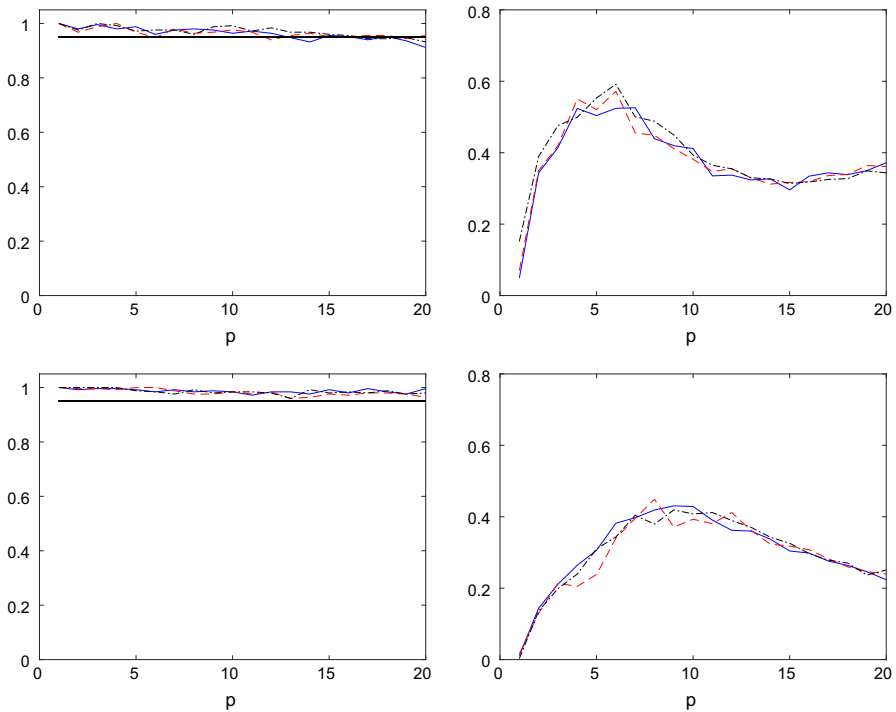


Fig. 1 Frequentist coverage of the 95% posterior credible interval for p (left) and square root of relative mean squared error of the estimator of p (right) for the SEPD. The simulations are for $\alpha = 0.2$ (blue continuous line), $\alpha = 0.5$ (red dashed line) and $\alpha = 0.8$ (black dotted line), and for $T = 100$ (top), $T = 250$ (bottom)

(as expected). Finally, we note that the effect of α on the frequentist performances is negligible.

To have a feeling of the complete inferential procedure, we show how all the parameters of a model are estimated. In particular, we consider an autoregressive model with one lag, $\phi_1 = -0.5$. The error terms are assumed to have an SEPD with $\sigma = 1$, $\alpha = 0.23$ and $p = 9$. We have drawn a sample of size $T = 300$ from the model and implemented the MCMC procedure described above. In Fig. 2 we show the posterior chain and histogram for parameters α , ϕ_1 , p and σ . The corresponding posterior mean, median and 95% HPD credible set are reported in Table 1. We note that the true parameter values are well contained in the corresponding posterior credible interval.

4.2 SGLD simulation study

To study the performance of the loss-based prior for the tail parameter p of the SGLD, as anticipated, we consider a linear regression model where the error terms have the above distribution. That is,

$$y_i = \beta_0 + \beta_1 x_i + \varepsilon_i, \quad i = 1, \dots, n, \tag{13}$$

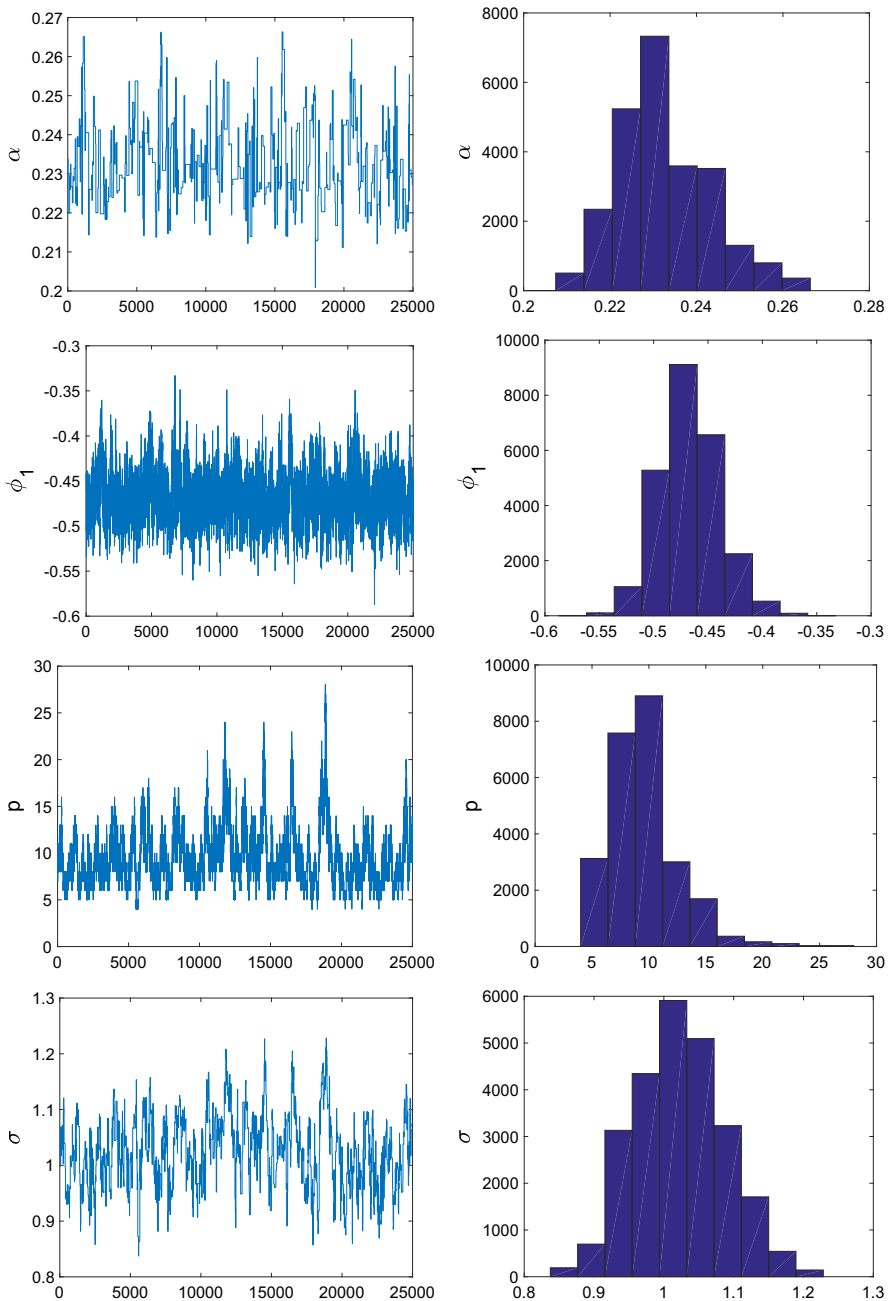


Fig. 2 Sample chains (left panels) and histograms of the posterior distributions (right panels) of the parameters for the simulated data from the SEPD with $\alpha = 0.23$, $\phi_1 = -0.5$, $p = 9$, $\sigma = 1$ and $T = 300$

Table 1 Summary statistics of the posterior distributions for the parameters of the simulated data from an SEPD with $\alpha = 0.23$, $\phi_1 = -0.5$, $p = 9$, $\sigma = 1$ and $T = 300$

Parameter	Mean	Median	95% HPD
α	0.2325	0.2310	(0.2144, 0.2542)
ϕ_1	-0.4672	-0.4684	(-0.5180, -0.4091)
p	9.5238	9	(5, 17)
σ	1.0231	1.0214	(0.9033, 1.1533)

where, for the purpose of this simulation, we have set $\beta_0 = 1.5$, $\beta_1 = -1$ and $\varepsilon_i \sim SGLD(\alpha, p, \mu, \sigma)$. We select 250 random samples from the above model (13) for each scenario determined by $p = 1, \dots, 20$, $\alpha = \{0.3, 0.5, 0.8\}$ and $n = 30, 100$. The scale parameter σ has been fixed to 1. The simulation study has been performed by considering a loss-based prior on p , the Jeffreys prior for the skewness parameter, $\pi(\alpha) \sim \text{Be}(1/2, 1/2)$, and for the scale parameter, $\pi(\sigma) \propto 1/\sigma$ (as discussed in Sect. 3.2). For β_0 and β_1 we have used the Zellner g-prior (Zellner 1986) with $g = n$, which is a bivariate normal with zero means and covariance matrix $\Sigma = n(X'X)^{-1}$, where $X = (1, x_{1i})$.

For this model as well the posterior distribution is analytically intractable. Therefore, we have implemented an MCMC procedure (Metropolis within Gibbs samples) with 10,000 iterations and a burn-in period of 5000 iterations. The frequentist analysis of the posterior for p is shown in Fig. 3. The coverage of the posterior 95% credible interval appears to be very similar whether we consider the different values of the skewness parameter α or the sample size. For what it concerns the MSE, we note some differences when the sample size is 30, although these are most certainly due to the relatively small amount of information about p contained in the sample. This difference vanishes for $n = 100$. Similarly to the study of the SEPD model, we report the complete inferential procedure for a single sample drawn from the model in (13), where we have set $\beta_0 = -2.5$, $\beta_1 = 3$, $\alpha = 0.23$, $p = 9$ and $\sigma = 1$. We run an MCMC procedure with 30.000 iterations and a burn-in period of 5.000 iterations. The posterior chains and histograms are plotted in Fig. 4, with the corresponding posterior statistics reported in Table 2. We note that the posterior means and medians give an excellent point representation of the true parameter values, and that the posterior credible intervals contain the above true values giving a high level accuracy of the estimates.

5 Real data analysis

In this section, we present two different examples with publicly available data to illustrate how the loss-based prior for the tail parameter p performs. In the first example we analyse the Nordpool Electricity prices by means of an autoregressive model with error terms distributed as a skewed exponential power, while in the second example we apply a linear regression model with error terms distributed as a skewed generalised logistic to Small Cell Cancer data.

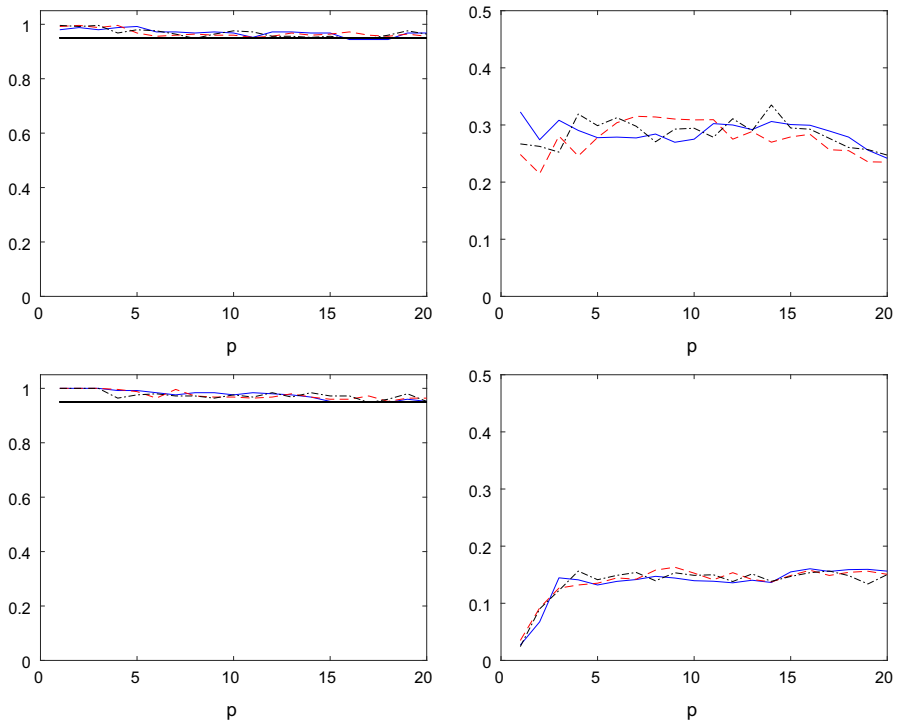


Fig. 3 Frequentist coverage of the 95% credible intervals for p (left) and square root of relative mean squared error of the estimator of p (right) for the SGLD. The simulations are for $\alpha = 0.2$ (blue continuous line), $\alpha = 0.5$ (red dashed line) and $\alpha = 0.8$ (black dotted line), and for $n = 30$ (top), $n = 100$ (bottom)

5.1 Nordpool electricity prices data

We use monthly prices (in level) to estimate models for electricity traded (Bottazzi and Secchi 2011; Trindade et al. 2010) in Nordpool countries: in particular, Finland and Denmark. The prices, which have been obtained directly from the corresponding power exchanges, are plotted in Fig. 5. Note that, for Denmark, we have averaged the two hourly zonal prices from Nordpool. The data is considered as the growth rate, meaning that we model the standardised first differences. Finally, of the $T = 180$ observation points, we use the first ten years as estimation sample and the last five years as forecast evaluation period.

The data is modelled with a univariate autoregressive model with one lag, where the error terms are SEPD. The results of the analysis are based on one-step-ahead forecasting process with a rolling window approach of 10 years for both the countries, and we have a forecast evaluation period of 60 observations (from January 2013 to December 2017). Following the results in Sect. 4, we run the estimation procedure through Gibbs sampling with a burn-in of 5.000 iterations and for the forecasting procedure we use the remaining 15.000 iterations.

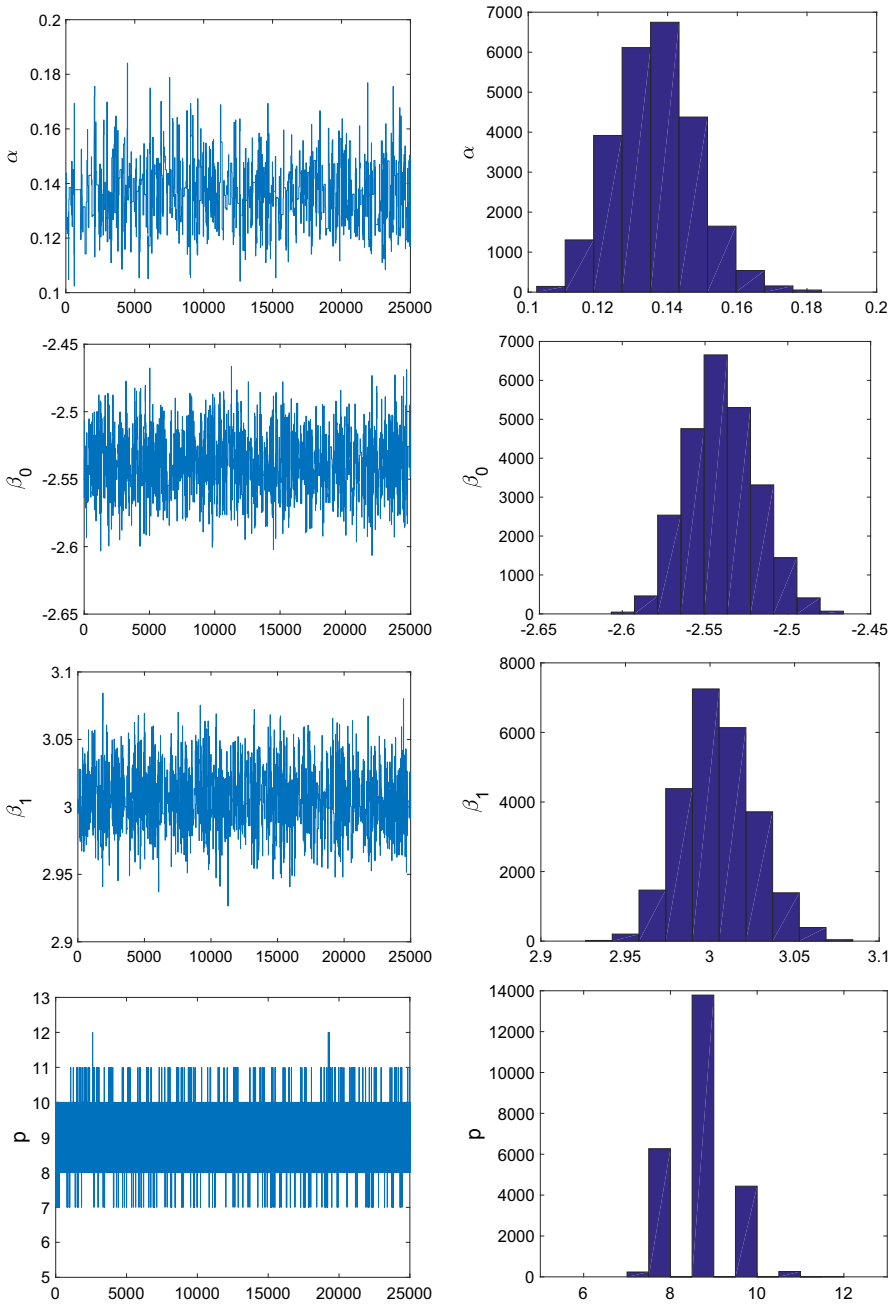


Fig. 4 Sample chains (left panels) and histograms of the posterior distributions (right panels) of the parameters for the simulated data from the SGLD with $\alpha = 0.13$, $\beta_0 = -2.5$, $\beta_1 = 3$, $p = 9$ and $n = 300$

Table 2 Summary statistics of the posterior distributions for the parameters of the simulated data from an SGLD with $\alpha = 0.13$, $\beta_0 = -2.5$, $\beta_1 = 3$, $p = 9$ and $n = 300$

Parameter	Mean	Median	95% HPD
α	0.1363	0.136	(0.1155, 0.1615)
β_0	-2.5396	-2.54	(-2.5775, -2.4964)
β_1	3.0048	3.0041	(2.9639, 3.0494)
p	8.9295	9	(8, 10)

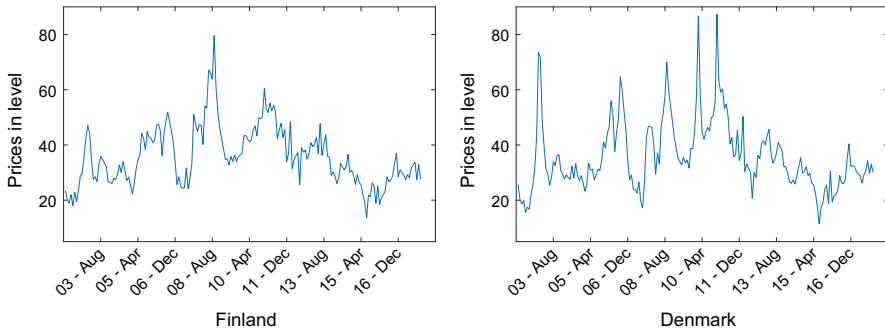


Fig. 5 Monthly electricity prices (in level) for Finland (left panel) and Denmark (right panel) from January 2003 to December 2017

We assess the goodness of our forecasts using different point and density metrics. For point forecasts, we use the root mean square errors (RMSEs) for the monthly prices as follows:

$$RMSE = \sqrt{\frac{1}{T - R} \sum_{t=R}^{T-1} (\hat{y}_{t+1|t} - y_{t+1|t})^2}, \tag{14}$$

where T is the number of observations, R is the length of the rolling window and $\hat{y}_{t+1|t}$ are the price forecasts.

To evaluate density forecasts, we use both the average log predictive score and the average continuous ranked probability score (CRPS). The log predictive score is computed as follows [see Geweke and Amisano (2010)]

$$s_t(y_{t+1}) = \log(f(y_{t+1}|I_t)),$$

where $f(y_{t+1}|I_t)$ is the predictive density for y_{t+1} constructed using information up to time t . In addition, following Gneiting and Raftery (2007) and Gneiting and Ranjan (2011), we also compute the continuous ranked probability score, which has some advantages with respect to the log-score. In fact, it is less sensitive to outliers. It can be computed as follows:

Table 3 Point (RMSE) and density forecast (average log predictive score and average CRPS) for Finland and Denmark

	Forecast	OLS	Bayesian Normal	SEPD error
<i>Finland</i>	RMSE	0.749	1.003	1.022
	log-score	-1.334	0.090	0.106
	CRPS	0.491	0.899	0.891
<i>Denmark</i>	RMSE	0.541	1.001	1.021
	log-score	-1.143	0.013	0.165
	CRPS	0.355	0.990	0.918

The first column (OLS) refers to the benchmark model and shows the values of the RMSE, average log predictive score and average CRPS. The second (Bayesian Normal) and third (SEPD error) columns refer to the RMSE ratios, score differences and CRPS ratios with respect to the benchmark model (OLS)

$$\begin{aligned} \text{CRPS}_t(y_{t+1}) &= \int_{-\infty}^{\infty} (F(z) - \mathbb{I}\{y_{t+1} \leq z\})^2 dz \\ &= E_f |Y_{t+1} - y_{t+1}| - 0.5 E_f |Y_{t+1} - Y'_{t+1}|, \end{aligned} \quad (15)$$

where F denotes the cumulative distribution function associated with the predictive density f , $\mathbb{I}\{y_{t+1} \leq z\}$ denotes an indicator function taking value 1 if $y_{t+1} \leq z$ and 0 otherwise, and Y_{t+1} and Y'_{t+1} are independent random draws from the posterior predictive density.

In Table 3, we report the RMSEs, average log-scores and average CRPS for the benchmark model, which is referred as the AR model with frequentist estimation. We compare the results from the Ordinary Least Squares (OLS) benchmark with the results obtained from the Bayesian AR with Normal error and our model based on SEPD errors. We also report the ratios of each model RMSE (average CRPS) to the baseline AR model, such that entries less than 1 indicate that the given model yields forecasts more accurate than those from the baseline. For the log-score, positive differences in score indicate that the given model outperforms the baseline.

For both Finland and Denmark the point forecast appears to be worse than the benchmark. This is more obvious for the AR model with SEPD errors, although the values are not far from one. There is a noticeable improvement, in using SEPD errors, when we focus on density forecast. In fact, considering the log-score, we have an improvement in considering SEPD (instead of normal) errors from 0.090 to 0.106 for Finland, and a more obvious improvement from 0.013 to 0.165 for Denmark.

5.2 Small cell cancer data

In this second example we illustrate the loss-based prior for the tail parameter p when we employ a linear regression model with SGLD errors. The data has been obtained from Ying et al. (1995), where a lung cancer study with two different types of treatment has been performed. In particular, the study contained $n = 121$ survival times (in log-days) of patients with small cell lung cancer (SCLC) to whom were administrated two different therapies. A treatment consisted of a combination of etoposide (E) and

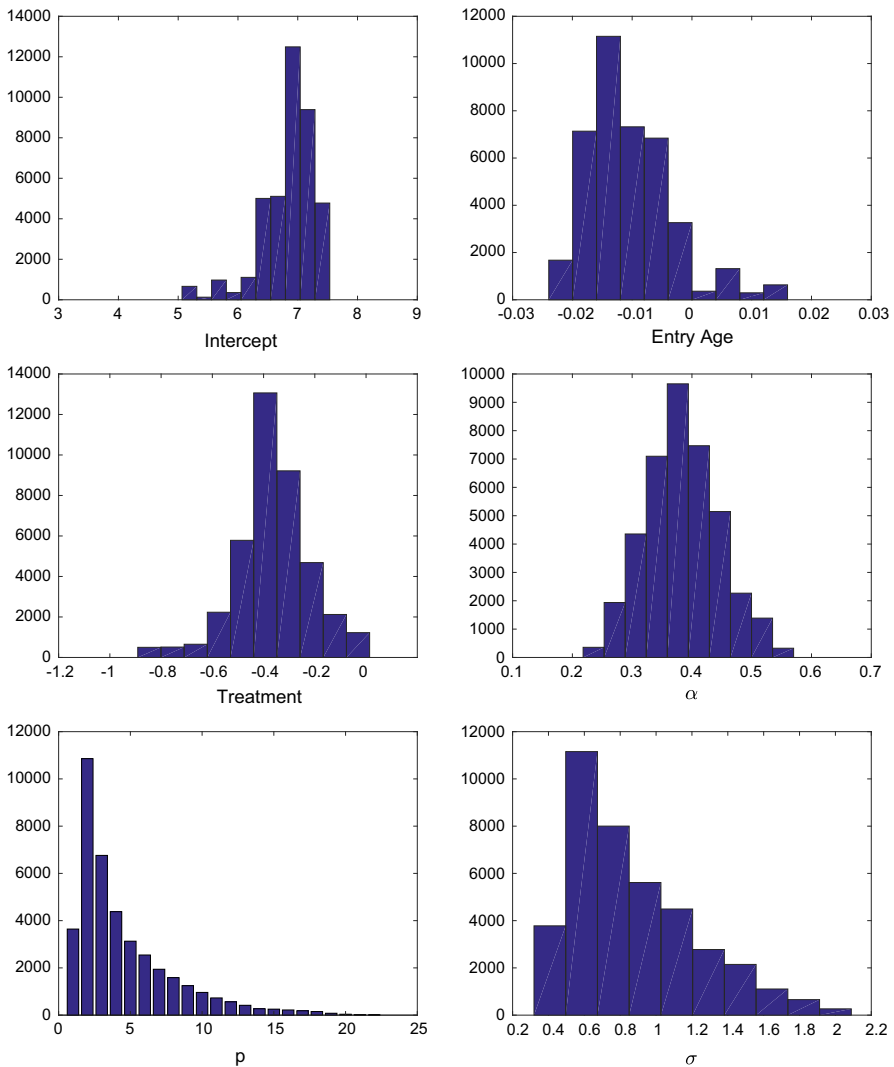


Fig. 6 Posterior histograms for the parameters of the regression model with SGLD errors for the SCLC study

cisplatin (P) in any order. The patients were split into two treatment groups: treatment A (62 patients), where the therapy consisted in administering P followed by E; treatment B (59 patients), where the therapy consisted in administering E followed by P. We regress the survival time on the following two covariates: the entry age (in years) and a dummy variable identifying the type of treatment (A or B).

The estimation of the parameters of the regression model has been done through Monte Carlo methods, as described in Sect. 4, with 50,000 iterations and a burn-in period of 10,000 iterations. Figure 6 shows the histograms of the posterior distributions for the parameters, while in Table 4 we have the corresponding posterior statistics.

Table 4 SCLC Lung Cancer data: Posterior mean, posterior median and 95% HPD credible set of the posterior for the regression model parameters

Parameter	Mean	Median	95% HPD	Rubio & Yu
Intercept	6.8438	6.9059	(5.6692, 7.4672)	6.690
Entry age	-0.0105	-0.0117	(-0.0216, 0.0079)	-0.009
Treatment	-0.3637	-0.3611	(-0.7161, -0.0552)	-0.446
α	0.3837	0.3814	(0.2717, 0.5116)	-0.395 (γ)
p	4.5349	3	(1, 14)	NA
σ	0.8630	0.7771	(0.3649, 1.7209)	0.650

The last column to the right reports the posterior means from Rubio and Yu (2017), where the skewness parameter is represented by $\gamma \in (-1, 1)$ expressing positive skewness for values smaller than 0

The estimated intercept of the regression model, represented by the posterior median, is similar to the result in Rubio and Yu (2017), that is 6.69. Similar considerations can be drawn for the coefficient of the entry age, which is very small and with a credible interval containing the zero; this last result supports the conclusion that the effect of the entry age on the survival time is negligible. However, the treatment appear to have a significant (negative) effect on the survival time, both under the estimated model and the results in Rubio and Yu (2017). For the scale parameter σ , we again see agreement between the SEPD regression and the results of the above authors, although our credible interval is larger. It is not possible to perform a direct comparison of the estimated asymmetry, but in both case the value shows a clear positive skewness. Finally, our inferential procedure suggests that the data exhibit heavy tails, as indicated by the posterior median of $p = 3$.

6 Discussion

We have illustrated an objective Bayesian approach in the estimation of the tail parameter in two particular distributions: the skewed exponential power distribution (SEPD) and the skewed generalised logistic distribution (SGLD). This represents a new application of the well-known loss-based prior (Villa and Walker 2015), where information theoretical considerations are used to derive minimally informative prior distributions. The SEPD and the SGLD are part of the wider family of two-piece location-scale distribution and allow to entangle skewness and tail fatness in one single probability distribution. Therefore, they represent an appealing modeling solution in scenarios where such behaviours are exhibited by the data, such as in financial applications and survival analysis.

We illustrate the properties of the loss-based prior for the tail parameter of the above distributions by performing a thorough simulation study and analysis two real data sets. Furthermore, we show how the SEPD and SGLD can be used to model error terms in complex modeling situations, such as the error terms of autoregressive process for time series and error terms for linear regression models.

We conclude the paper with the indication of some future research lines. Our approach can be extended to volatility models in order to model the tail behaviour

of the returns in electricity markets. Furthermore, a combination of our loss-based approach with quantile regression could be a possible extension.

Open Access This article is distributed under the terms of the Creative Commons Attribution 4.0 International License (<http://creativecommons.org/licenses/by/4.0/>), which permits unrestricted use, distribution, and reproduction in any medium, provided you give appropriate credit to the original author(s) and the source, provide a link to the Creative Commons license, and indicate if changes were made.

A Proofs

Proof of Theorem 3.1 Note that,

$$D_{\text{KL}}\left(f_p^{\alpha,\mu,\sigma} \parallel f_{p'}^{\alpha,\mu,\sigma}\right) = D_{\leq}\left(f_p^{\alpha,\mu,\sigma} \parallel f_{p'}^{\alpha,\mu,\sigma}\right) + D_{>}\left(f_p^{\alpha,\mu,\sigma} \parallel f_{p'}^{\alpha,\mu,\sigma}\right),$$

where the above Kullback–Leibler divergences are:

$$D_{\leq}\left(f_p^{\alpha,\mu,\sigma} \parallel f_{p'}^{\alpha,\mu,\sigma}\right) = \int_{-\infty}^{\mu} f_p^{\alpha,\mu,\sigma}(y) \log \left\{ \frac{f_p^{\alpha,\mu,\sigma}(y)}{f_{p'}^{\alpha,\mu,\sigma}(y)} \right\} dy$$

and

$$D_{>}\left(f_p^{\alpha,\mu,\sigma} \parallel f_{p'}^{\alpha,\mu,\sigma}\right) = \int_{\mu}^{\infty} f_p^{\alpha,\mu,\sigma}(y) \log \left\{ \frac{f_p^{\alpha,\mu,\sigma}(y)}{f_{p'}^{\alpha,\mu,\sigma}(y)} \right\} dy.$$

Focusing on the first term, we have that:

$$\begin{aligned} D_{\leq}\left(f_p^{\alpha,\mu,\sigma} \parallel f_{p'}^{\alpha,\mu,\sigma}\right) &= \int_{-\infty}^{\mu} f_p^{\alpha,\mu,\sigma}(y) \log \left\{ \frac{f_p^{\alpha,\mu,\sigma}(y)}{f_{p'}^{\alpha,\mu,\sigma}(y)} \right\} dy \\ &= \int_{-\infty}^{\mu} \frac{1}{\sigma} f_p\left(\frac{y-\mu}{2\alpha\sigma}\right) \log \left\{ \frac{f_p\left(\frac{y-\mu}{2\alpha\sigma}\right)}{f_{p'}\left(\frac{y-\mu}{2\alpha\sigma}\right)} \right\} dy, \end{aligned}$$

where the last equality follows from (8). By performing the change of variable $x = \frac{y-\mu}{2\alpha\sigma}$, we get

$$\begin{aligned} D_{\leq}\left(f_p^{\alpha,\mu,\sigma} \parallel f_{p'}^{\alpha,\mu,\sigma}\right) &= 2\alpha \int_{-\infty}^0 f_p(x) \log \left\{ \frac{f_p(x)}{f_{p'}(x)} \right\} dx \\ &= 2\alpha D_{\leq}(f_p \parallel f_{p'}). \end{aligned}$$

For the models under consideration, i.e. the SEPD and the SGLD, $f_p = f_p^{\alpha=0.5,\mu=0,\sigma=1}$ and $f_{p'} = f_{p'}^{\alpha=0.5,\mu=0,\sigma=1}$. Therefore,

$$D_{\leq}\left(f_p^{\alpha,\mu,\sigma} \parallel f_{p'}^{\alpha,\mu,\sigma}\right) = 2\alpha D_{\leq}\left(f_p^{\alpha=0.5,\mu=0,\sigma=1} \parallel f_{p'}^{\alpha=0.5,\mu=0,\sigma=1}\right).$$

Similarly,

$$D_{>} \left(f_p^{\alpha, \mu, \sigma} \parallel f_{p'}^{\alpha, \mu, \sigma} \right) = 2(1 - \alpha) D_{>} \left(f_p^{\alpha=0.5, \mu=0, \sigma=1} \parallel f_{p'}^{\alpha=0.5, \mu=0, \sigma=1} \right).$$

Note that,

$$D_{\leq} \left(f_p^{\alpha=0.5, \mu=0, \sigma=1} \parallel f_{p'}^{\alpha=0.5, \mu=0, \sigma=1} \right) = D_{>} \left(f_p^{\alpha=0.5, \mu=0, \sigma=1} \parallel f_{p'}^{\alpha=0.5, \mu=0, \sigma=1} \right).$$

As a consequence,

$$\begin{aligned} D_{KL} \left(f_p^{\alpha=0.5, \mu=0, \sigma=1} \parallel f_{p'}^{\alpha=0.5, \mu=0, \sigma=1} \right) &= 2D_{\leq} \left(f_p^{\alpha=0.5, \mu=0, \sigma=1} \parallel f_{p'}^{\alpha=0.5, \mu=0, \sigma=1} \right) \\ &= 2D_{>} \left(f_p^{\alpha=0.5, \mu=0, \sigma=1} \parallel f_{p'}^{\alpha=0.5, \mu=0, \sigma=1} \right). \end{aligned}$$

Therefore, by using the above identity, we can conclude the proof:

$$\begin{aligned} D_{KL} \left(f_p^{\alpha, \mu, \sigma} \parallel f_{p'}^{\alpha, \mu, \sigma} \right) &= D_{\leq} \left(f_p^{\alpha, \mu, \sigma} \parallel f_{p'}^{\alpha, \mu, \sigma} \right) + D_{>} \left(f_p^{\alpha, \mu, \sigma} \parallel f_{p'}^{\alpha, \mu, \sigma} \right) \\ &= 2\alpha D_{\leq} \left(f_p^{\alpha=0.5, \mu=0, \sigma=1} \parallel f_{p'}^{\alpha=0.5, \mu=0, \sigma=1} \right) \\ &\quad + 2(1 - \alpha) D_{>} \left(f_p^{\alpha=0.5, \mu=0, \sigma=1} \parallel f_{p'}^{\alpha=0.5, \mu=0, \sigma=1} \right) \\ &= \alpha D_{KL} \left(f_p^{\alpha=0.5, \mu=0, \sigma=1} \parallel f_{p'}^{\alpha=0.5, \mu=0, \sigma=1} \right) \\ &\quad + (1 - \alpha) D_{KL} \left(f_p^{\alpha=0.5, \mu=0, \sigma=1} \parallel f_{p'}^{\alpha=0.5, \mu=0, \sigma=1} \right) \\ &= D_{KL} \left(f_p^{\alpha=0.5, \mu=0, \sigma=1} \parallel f_{p'}^{\alpha=0.5, \mu=0, \sigma=1} \right). \end{aligned}$$

□

Proof of Theorem 3.2 Using the probability density function displayed in Eq. (3), we have that:

$$\begin{aligned}
 D_{KL} & \left(f_p^{\alpha=0.5, \mu=0, \sigma=1} \parallel f_{p'}^{\alpha=0.5, \mu=0, \sigma=1} \right) \\
 & = \int_{-\infty}^{\infty} K(p) e^{-\frac{1}{p}|z|^p} \log \left\{ \frac{K(p) e^{-\frac{1}{p}|z|^p}}{K(p') e^{-\frac{1}{p'}|z|^{p'}}} \right\} dz \\
 & = 2 \int_0^{\infty} K(p) e^{-\frac{1}{p}z^p} \log \left\{ \frac{K(p) e^{-\frac{1}{p}z^p}}{K(p') e^{-\frac{1}{p'}z^{p'}}} \right\} dz \\
 & = 2 [\log K(p) - \log K(p')] K(p) \int_0^{\infty} e^{-\frac{1}{p}z^p} dz \\
 & \quad - 2 \frac{K(p)}{p} \int_0^{\infty} e^{-\frac{1}{p}z^p} z^p dz + 2 \frac{K(p)}{p'} \int_0^{\infty} e^{-\frac{1}{p'}z^{p'}} z^{p'} dz. \tag{A.1}
 \end{aligned}$$

From 3.478.1 of Gradshteyn and Ryzhik (2007),

$$\int_0^{\infty} x^{v-1} e^{-\mu x^p} dx = \frac{1}{p} \mu^{-v/p} \Gamma\left(\frac{v}{p}\right),$$

we have that Eq. (A.1) becomes:

$$\begin{aligned}
 D_{KL} & \left(f_p^{\alpha=0.5, \mu=0, \sigma=1} \parallel f_{p'}^{\alpha=0.5, \mu=0, \sigma=1} \right) \\
 & = 2 \left[\log \frac{K(p)}{K(p')} \right] \frac{K(p)}{p} \left(\frac{1}{p}\right)^{-\frac{1}{p}} \Gamma\left(\frac{1}{p}\right) - 2 \frac{K(p)}{p^2} \left(\frac{1}{p}\right)^{-\frac{(p+1)}{p}} \Gamma\left(\frac{p+1}{p}\right) \\
 & \quad + 2 \frac{K(p)}{p'} \frac{1}{p} \left(\frac{1}{p}\right)^{-\frac{(p'+1)}{p}} \Gamma\left(\frac{p'+1}{p}\right) \\
 & = \log K(p) - \log K(p') - p^{-1} + \frac{p^{\frac{p'}{p}} \Gamma\left(\frac{p'+1}{p}\right)}{p' \Gamma\left(\frac{1}{p}\right)}.
 \end{aligned}$$

In conclusion, following Theorem 3.1, the Kullback–Leibler divergence has the form

$$D_{KL} \left(f_p^{\alpha, \mu, \sigma} \parallel f_{p'}^{\alpha, \mu, \sigma} \right) = \log K(p) - \log K(p') - p^{-1} + \frac{p^{\frac{p'}{p}} \Gamma\left(\frac{p'+1}{p}\right)}{p' \Gamma\left(\frac{1}{p}\right)}.$$

□

Proof of Theorem 3.3 Using the probability density function displayed in Eq. (5), we have that:

$$\begin{aligned}
 D_{KL} & \left(f_p^{\alpha=0.5, \mu=0, \sigma=1} \parallel f_{p'}^{\alpha=0.5, \mu=0, \sigma=1} \right) \\
 & = \int_{-\infty}^{\infty} \frac{e^{-px}}{B(p, p)(1 + e^{-x})^{2p}} \log \left[\frac{B(p', p')}{B(p, p)} \frac{e^{-p'x}/(1 + e^{-x})^{2p'}}{e^{-px}/(1 + e^{-x})^{2p}} \right] dx \\
 & = \int_0^1 \frac{1}{B(p, p)} t^{p-1} (1 - t)^{p-1} \log \left[\frac{B(p', p')}{B(p, p)} \frac{t^p (1 - t)^p}{t^{p'} (1 - t)^{p'}} \right] dt,
 \end{aligned}$$

where $t = S(x)$, $dt = s(x)dx$ and $S(x)$ and $s(x)$ are the cumulative distribution and the probability distribution function of the logistic distribution, respectively. Hence, we can extend the Kullback–Leibler divergence as

$$\begin{aligned}
 D_{KL} & \left(f_p^{\alpha=0.5, \mu=0, \sigma=1} \parallel f_{p'}^{\alpha=0.5, \mu=0, \sigma=1} \right) \\
 & = \log \left[\frac{B(p', p')}{B(p, p)} \right] + \frac{(p - p')}{B(p, p)} \int_0^1 t^{p-1} (1 - t)^{p-1} \log(t) dt \\
 & \quad + \frac{(p - p')}{B(p, p)} \int_0^1 t^{p-1} (1 - t)^{p-1} \log(1 - t) dt \\
 & = \log \left[\frac{B(p', p')}{B(p, p)} \right] + \frac{2(p - p')}{B(p, p)} \int_0^1 t^{p-1} (1 - t)^{p-1} \log(t) dt. \tag{A.2}
 \end{aligned}$$

In conclusion, from 4.253.1 of Gradshteyn and Ryzhik (2007)

$$\int_0^1 t^{p-1} (1 - t)^{p-1} \log(t) dt = B(p, p) [\psi(p) - \psi(2p)],$$

where $\psi(p)$ is the digamma function, the Kullback–Leibler divergence represented in Eq. (A.2) has the following form

$$\begin{aligned}
 D_{KL} & \left(f_p^{\alpha=0.5, \mu=0, \sigma=1} \parallel f_{p'}^{\alpha=0.5, \mu=0, \sigma=1} \right) \\
 & = \log \left[\frac{B(p', p')}{B(p, p)} \right] + 2(p - p') [\psi(p) - \psi(2p)].
 \end{aligned}$$

□

B Comparison of the Kullback–Leibler Divergence for different distributions

Table 5 Comparison of the Kullback–Leibler divergences $D_{KL} \left(f_p^{\alpha, \mu, \sigma} \parallel f_{p-1}^{\alpha, \mu, \sigma} \right)$ and $D_{KL} \left(f_p^{\alpha, \mu, \sigma} \parallel f_{p+1}^{\alpha, \mu, \sigma} \right)$ for $p = 2, \dots, 30$ for the SEPD

p	$D_{KL} \left(f_p^{\alpha, \mu, \sigma} \parallel f_{p-1}^{\alpha, \mu, \sigma} \right)$	$D_{KL} \left(f_p^{\alpha, \mu, \sigma} \parallel f_{p+1}^{\alpha, \mu, \sigma} \right)$	p	$D_{KL} \left(f_p^{\alpha, \mu, \sigma} \parallel f_{p-1}^{\alpha, \mu, \sigma} \right)$	$D_{KL} \left(f_p^{\alpha, \mu, \sigma} \parallel f_{p+1}^{\alpha, \mu, \sigma} \right)$
2	7.2093×10^{-02}	5.9144×10^{-02}	17	6.1438×10^{-04}	6.3413×10^{-04}
3	2.7675×10^{-02}	2.6462×10^{-02}	18	5.3875×10^{-04}	5.5578×10^{-04}
4	1.4752×10^{-02}	1.4759×10^{-02}	19	4.7558×10^{-04}	4.9036×10^{-04}
5	9.1321×10^{-03}	9.3019×10^{-03}	20	4.2233×10^{-04}	4.3523×10^{-04}
6	6.1732×10^{-03}	6.3402×10^{-03}	21	3.7707×10^{-04}	3.8840×10^{-04}
7	4.4262×10^{-03}	4.5646×10^{-03}	22	3.3833×10^{-04}	3.4833×10^{-04}
8	3.3117×10^{-03}	3.4223×10^{-03}	23	3.0494×10^{-04}	3.1381×10^{-04}
9	2.5594×10^{-03}	2.6474×10^{-03}	24	2.7599×10^{-04}	2.8388×10^{-04}
10	2.0292×10^{-03}	2.0997×10^{-03}	25	2.5074×10^{-04}	2.5780×10^{-04}
11	1.6426×10^{-03}	1.6996×10^{-03}	26	2.2861×10^{-04}	2.3494×10^{-04}
12	1.3527×10^{-03}	1.3994×10^{-03}	27	2.0911×10^{-04}	2.1481×10^{-04}
13	1.1302×10^{-03}	1.1688×10^{-03}	28	1.9186×10^{-04}	1.9701×10^{-04}
14	9.5616×10^{-04}	9.8838×10^{-04}	29	1.7653×10^{-04}	1.8120×10^{-04}
15	8.1765×10^{-04}	8.4480×10^{-04}	30	1.6285×10^{-04}	1.6710×10^{-04}
16	7.0582×10^{-04}	7.2889×10^{-04}			
30	1.6285×10^{-04}	1.6710×10^{-04}	120	5.3155×10^{-06}	5.3800×10^{-06}
60	3.0272×10^{-05}	3.0829×10^{-05}	150	3.0055×10^{-06}	3.0370×10^{-06}
90	1.1010×10^{-05}	1.1169×10^{-05}	180	1.8801×10^{-06}	1.8975×10^{-06}

Table 6 Comparison of the Kullback–Leibler divergences $D_{KL} \left(f_p^{\alpha, \mu, \sigma} \parallel f_{p-1}^{\alpha, \mu, \sigma} \right)$ and $D_{KL} \left(f_p^{\alpha, \mu, \sigma} \parallel f_{p+1}^{\alpha, \mu, \sigma} \right)$ for $p = 2, \dots, 30$ for the SGLD

p	$D_{KL} \left(f_p^{\alpha, \mu, \sigma} \parallel f_{p-1}^{\alpha, \mu, \sigma} \right)$	$D_{KL} \left(f_p^{\alpha, \mu, \sigma} \parallel f_{p+1}^{\alpha, \mu, \sigma} \right)$	p	$D_{KL} \left(f_p^{\alpha, \mu, \sigma} \parallel f_{p-1}^{\alpha, \mu, \sigma} \right)$	$D_{KL} \left(f_p^{\alpha, \mu, \sigma} \parallel f_{p+1}^{\alpha, \mu, \sigma} \right)$
2	0.1251	0.0572	17	9.2755×10^{-04}	8.5657×10^{-04}
3	0.0428	0.0262	18	8.2411×10^{-04}	7.6446×10^{-04}
4	0.0214	0.0150	19	7.3704×10^{-04}	6.8644×10^{-04}
5	0.0128	0.0097	20	6.6308×10^{-04}	6.1979×10^{-04}
6	0.0085	0.0068	21	5.9972×10^{-04}	5.6239×10^{-04}
7	0.0061	0.0050	22	5.4503×10^{-04}	5.1261×10^{-04}
8	0.0045	0.0038	23	4.9749×10^{-04}	4.6916×10^{-04}
9	0.0035	0.0030	24	4.5591×10^{-04}	4.3101×10^{-04}
10	0.0028	0.0025	25	4.1933×10^{-04}	3.9733×10^{-04}
11	0.0023	0.0020	26	3.8698×10^{-04}	3.6745×10^{-04}
12	0.0019	0.0017	27	3.5824×10^{-04}	3.4082×10^{-04}
13	0.0016	0.0015	28	3.3258×10^{-04}	3.1698×10^{-04}
14	0.0014	0.0013	29	3.0959×10^{-04}	2.9556×10^{-04}
15	0.0012	0.0011	30	2.8890×10^{-04}	2.7623×10^{-04}
16	0.0011	0.0010			
30	2.8890×10^{-04}	2.7623×10^{-04}	120	1.7531×10^{-05}	1.7337×10^{-05}
60	7.0814×10^{-05}	6.9252×10^{-05}	150	1.1198×10^{-05}	1.1099×10^{-05}
90	3.1268×10^{-05}	3.0807×10^{-05}	180	7.7663×10^{-06}	7.7089×10^{-06}

C Generate samples with the SEPD and the SGLD

As described by Komunjer (2007) and Zhu and Zinde-Walsh (2009), the SEPD could be simulated by using the standard skewed exponential power distribution. They highlighted the following procedure:

- Generate $U \sim U(0, 1)$, $W_1 \sim Ga(1/p, 1)$ and $W_2 \sim Ga(1/p, 1)$.
- Compute the following transformed variable,

$$Z = \alpha W_1^{1/p} \left[\frac{\text{sign}(U - \alpha) - 1}{2K(p)\Gamma(1 + 1/p)} \right] + (1 - \alpha) W_2^{1/p} \left[\frac{\text{sign}(U - \alpha) + 1}{2K(p)\Gamma(1 + 1/p)} \right], \quad (\text{C.1})$$

where $\text{sign}(x) = 1$ if $x > 0$, $\text{sign}(x) = -1$ if $x < 0$ and $\text{sign}(x) = 0$ if $x = 0$.

The above procedure generates an observation from the SEPD with $\mu = 0$, $\sigma = 1$. We can obtain a SEPD with different μ and σ by simply multiplying Z by the scale parameter and adding the location parameter.

Simulating from the SGLD follows a similar procedure. In particular,

- Generate $U \sim U(0, 1)$, W_1 and W_2 from the distribution displayed in (4).
- Compute the following transformed variable,

$$Z = \alpha |W_1| [\text{sign}(U - \alpha) - 1] + (1 - \alpha) |W_2| [\text{sign}(U - \alpha) + 1], \quad (\text{C.2})$$

where $\text{sign}(x) = 1$ if $x > 0$, $\text{sign}(x) = -1$ if $x < 0$ and $\text{sign}(x) = 0$ if $x = 0$.

The above procedure generates an observation from the SGLD with $\mu = 0$, $\sigma = 1$. We can obtain a SGLD with different μ and σ by simply multiplying Z by the scale parameter and adding the location parameter.

References

- Azzalini A (1985) A class of distributions which includes the normal ones. *Scand J Stat* 12:171–178
- Berger JO, Bernardo JM, Sun D (2009) The formal definition of reference priors. *Ann Stat* 37:905–938
- Berk R (1966) Limiting behaviour of posterior distributions when the model is incorrect. *Ann Math Stat* 37:51–58
- Bernardi M, Bottone M, Petrella L (2018) Bayesian quantile regression using the skew exponential power distribution. *Comput Stat Data Anal* 126:92–111
- Bernardi M, Bottone M, Petrella L (2019) Unified bayesian conditional autoregressive risk measures using the skew exponential power distribution. *arXiv1902.03982*
- Bottazzi G, Secchi A (2011) A new class of asymmetric exponential power densities with applications to economics and finance. *Ind Corp Change* 20:991–1030
- Conejo Contreras, Espínola, and Plazas, (2005) Forecasting electricity prices for a day-ahead poolbased electric energy market. *Int J Forecast* 21:435–462
- Fernandez C, Steel MFJ (1998) On Bayesian modeling of fat tails and skewness. *J Am Stat Assoc* 93:359–371
- Geweke J, Amisano G (2010) Comparing and evaluating Bayesian predictive distributions of asset returns. *Int J Forecast* 26:216–230
- Gneiting T, Raftery A (2007) Strictly proper scoring rules, prediction and estimation. *J Am Stat Assoc* 102:359–378
- Gneiting T, Ranjan R (2011) Comparing density forecasts using threshold and quantile weighted proper scoring rules. *J Bus Econ Stat* 29:411–422

- Gradshteyn I, Ryzhik I (2007) Table of integrals, series and products. Academic Press, Cambridge
- Harvey A, Lange R-J (2016) Volatility modeling with a generalized t distribution. *J Time Ser Anal* 38:175–190
- Jeffreys H (1961) Theory of probability. Oxford University Press, Oxford
- Jones MC (2004) Families of distributions arising from distribution of order statistics. *Test* 13:1–43
- Kobayashi G (2016) Skew exponential power stochastic volatility model for analysis of skewness, non-normal tails, quantiles and expectiles. *Comput Stat* 31:49–88
- Komunjer I (2007) Asymmetric power distribution: theory and applications to risk measurement. *J Appl Econ* 22:891–921
- Kozubowski TJ, Podgorski K (2001) Asymmetric Laplace laws and modeling financial data. *Math Comput Modell* 34:1003–1021
- Leisen F, Marin JM, Villa C (2017) Objective Bayesian modeling of insurance risks with the skew student-t distribution. *Appl Stoch Models Bus Ind* 33:136–151
- Maciejowska K, Weron R (2015) Forecasting of daily electricity prices with factor models: utilizing intra-day and inter-zone relationships. *Comput Stat* 30:805–819
- Merhav N, Feder M (1998) Universal prediction. *IEEE Trans Inf Theory* 44:2124–2147
- Misiorek A, Truock S, Weron R (2006) Point and interval forecasting of spot electricity prices: linear vs. non-linear time series models. *Stud Nonlinear Dyn Econ* 10
- Mudholkar GS, Hutson AD (2000) The epsilon-skew-normal distribution for analyzing near-normal data. *J Stat Plan Inference* 83:291–309
- Naranjo L, Pérez CJ, Martín J (2015) Bayesian analysis of some models that use the asymmetric exponential power distribution. *Stat Comput* 25:497–514
- Nowotarski J, Weron R (2018) Recent advances in electricity price forecasting: a review of probabilistic forecasting. *Renew Sustain Energy Rev* 81:1548–1568
- Rubio FJ, Steel MFJ (2011) Inference for grouped data with a truncated skew-Laplace distribution. *Comput Stat Data Anal* 55:3218–3231
- Rubio FJ, Steel MFJ (2014) Inference in Two-Piece Location-Scale models with Jeffreys priors. *Bayesian Anal* 9:1–22
- Rubio FJ, Yu K (2017) Flexible objective bayesian linear regression with applications in survival analysis. *J Appl Stat* 44:798–810
- Trindade AA, Zhu Y, Andrews B (2010) Time series models with asymmetric laplace innovations. *J Stat Comput Simul* 80:1317–1333
- Tu S, Wang M, Sun X (2016) Bayesian analysis of two-piece location-scale models under reference priors with partial information. *Comput Stat Data Anal* 96:133–144
- Villa C, Walker SG (2015) An objective approach to prior mass function for discrete parameter spaces. *J Am Stat Assoc* 110:1072–1082
- Weron R (2014) Electricity price forecasting: a review of the state-of-the-art with a look into the future. *Int J Forecast* 30:1030–1081
- Ying Z, Jung S, Wei L (1995) Survival analysis with median regression models. *J Am Stat Assoc* 90:178–184
- Zellner A (1986) On assessing prior distributions and Bayesian regression analysis with g-prior distributions. *Bayesian inference and Decision techniques: essays in Honor of Bruno De Finetti* vol 6, pp 233–243
- Zhao X, Zhang H, Lai KK, Wang S (2007) A method for evaluating mutual funds performance based on asymmetric Laplace distribution and DEA approach. *Syst Eng Theory Pract* 27:1–10
- Zhu D, Galbraith JW (2010) A generalized asymmetric student-t distribution with applications to financial econometrics. *J Appl Econ* 157:197–305
- Zhu D, Galbraith JW (2011) Modeling and forecasting expected shortfall with the generalized asymmetric student-t and asymmetric exponential power distributions. *J Empir Finance* 18:765–778
- Zhu D, Zinde-Walsh V (2009) Properties and estimation of asymmetric exponential power distribution. *J Econ* 148:86–99