

Kent Academic Repository

Full text document (pdf)

Citation for published version

Mikelyte, Rasa (2018) Changing Care Homes: the overlooked impact of marketization. In: Public Policy Exchange symposium on Raising the Standards of Care Homes, 7 June 2018, London, UK. (Unpublished)

DOI

Link to record in KAR

<https://kar.kent.ac.uk/70493/>

Document Version

Presentation

Copyright & reuse

Content in the Kent Academic Repository is made available for research purposes. Unless otherwise stated all content is protected by copyright and in the absence of an open licence (eg Creative Commons), permissions for further reuse of content should be sought from the publisher, author or other copyright holder.

Versions of research

The version in the Kent Academic Repository may differ from the final published version.

Users are advised to check <http://kar.kent.ac.uk> for the status of the paper. **Users should always cite the published version of record.**

Enquiries

For any further enquiries regarding the licence status of this document, please contact:

researchsupport@kent.ac.uk

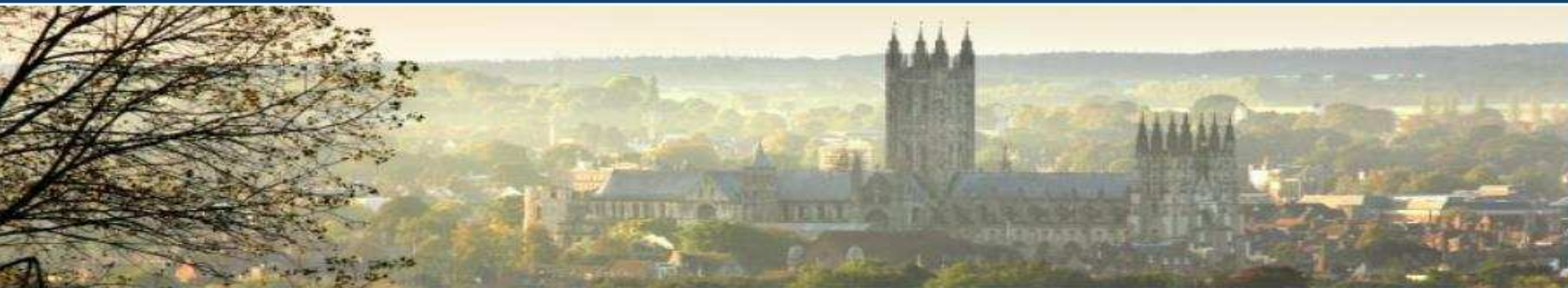
If you believe this document infringes copyright then please contact the KAR admin team with the take-down information provided at <http://kar.kent.ac.uk/contact.html>

Changing Care Homes: the overlooked impact of marketisation

Dr Rasa Mikelyte

Raising the Standards of Care Homes: Tackling Vulnerability and Addressing Priorities for Reform

CENTRE FOR HEALTH SERVICES STUDIES



EXCELLENCE
IN HEALTH
RESEARCH

“I’m drowning here and you’re describing the water”

We have a large body of evidence on:

- What older people and their carers needs and expectations are
- What issues care home staff experience
- What difficulties the care home ‘industry’ is facing
- What is going wrong (e.g. abuse, bankruptcy)
- What best practice looks like
- What outcomes are universally desired

SO.... How did we end up here?

- and what has the neo-liberal market got to do with it?





Care homes have changed in the last 30 years

- From a predominantly public sector activity to a **private sector** activity
- Increasing **consolidation** (largest 10 companies own ¼ of the market)
- Doubling in **size** of homes
- Increase in **number of beds** is lagging behind increase in population
- Trend towards re-registration to ‘care homes with **nursing**’
- Care home population is **getting older** & being admitted at a **later stage in illness** trajectory
- Improvement in **physical amenities**, much less evidence for improvement of care quality, social opportunities, meaningful activities, etc.
- Independent Care Home **closures** outweigh number of new places
- Price of housing, wage costs & income levels affect both overall availability & change over time



Impact on Residents: limited choice and limited power

- Marketisation (and the welfare reform) have resulted in a **transfer of responsibility** for managing choices (from trained professionals to users and carers; Clarke et al, 2006)
- **Who pays** has changed, too: self-funding increasing, cost of care going up, top-ups, What people can afford vs what they need (Ray & Sullivan, 2016)
- Fundamental tension in conceptualising a care home resident as:
 - A **consumer** making choices
 - A **frail and vulnerable person**
 - Empowered 'consumer model' does not fit
- **Risks of abuse** amplified in contexts where institutional & commercial imperatives take priority (e.g. Frances Enquiry, 2013)



How do care homes appreciate diversity?

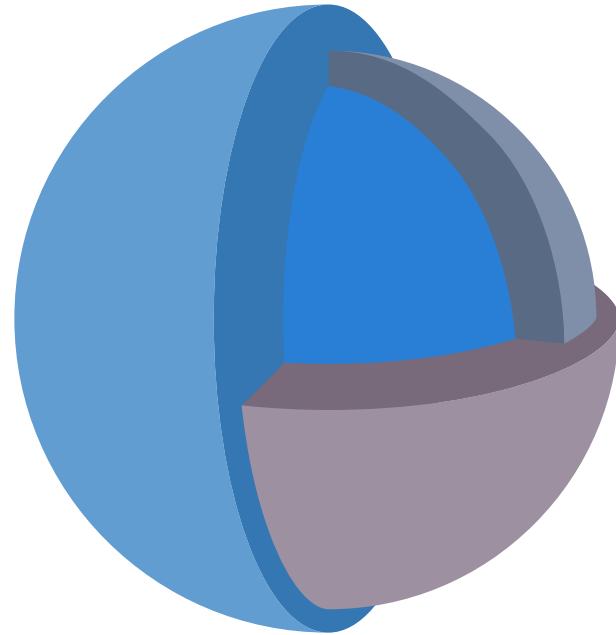




Tensions of need vs provision



The Impact of Marketisation



**Creating greater
resident
vulnerability**



Impact on Informal Carers

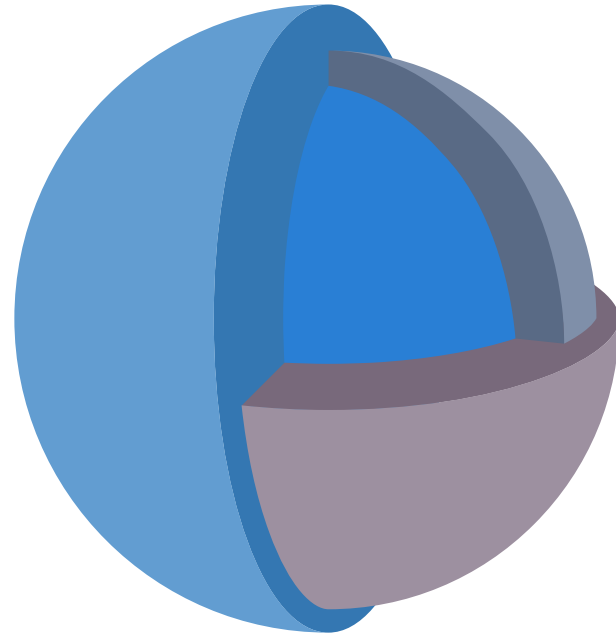
- Are informal (family) carers ‘the consumer’?
 - Over estimate families’ ability & willingness to engage in complex decisions
 - Care home admissions are most often crisis-driven (Harrison, 2017)
 - Choice? The not-so-voluntary Top Ups (Ray & Sullivan, 2016)
 - The devolution of ‘risk, responsibility and stress’ (Clarke et al, 2006)
 - ‘Individualistic notion of care that fails to acknowledge the centrality of the relationship’ (Lloyd, 2012)
- Fear of ‘rocking the boat’ (Welch, et al, 2017)
- Uncomfortable treating care as a consumer good (Ray, et al, 2015)
- **Consumer oriented model of care may actively disadvantage carers**



The Impact of Marketisation



**Superseding
Relatives**

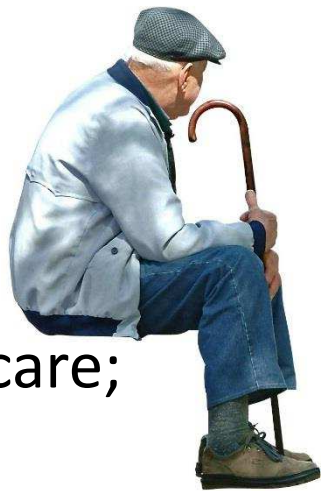


**Creating greater
resident
vulnerability**



Impact on Frontline Staff

- For-profit homes associated with significantly higher staff turnover than not-for profit homes and lower quality care (Comondore et al, 2009)
- Disparity in permanent contract pay and agency staff wages lead many to choose the latter (Skills for Care, 2016)
- Organisational cultures encouraging divisions (Mikelyte & Milne, 2014)
- Medicalisation of the profession & routes of career progression (Aronson, 2002)
- Moral tensions: service provision constraints often at odds with ethics of care; sense of failing the residents (Häggström, 2004)
- Representation of frontline staff (in local and national decision-making)
- 'Outsourcing' of responsibility for 'abuse' to disempowered underpaid frontline staff not located in wider organisational imperatives (e.g. profit)



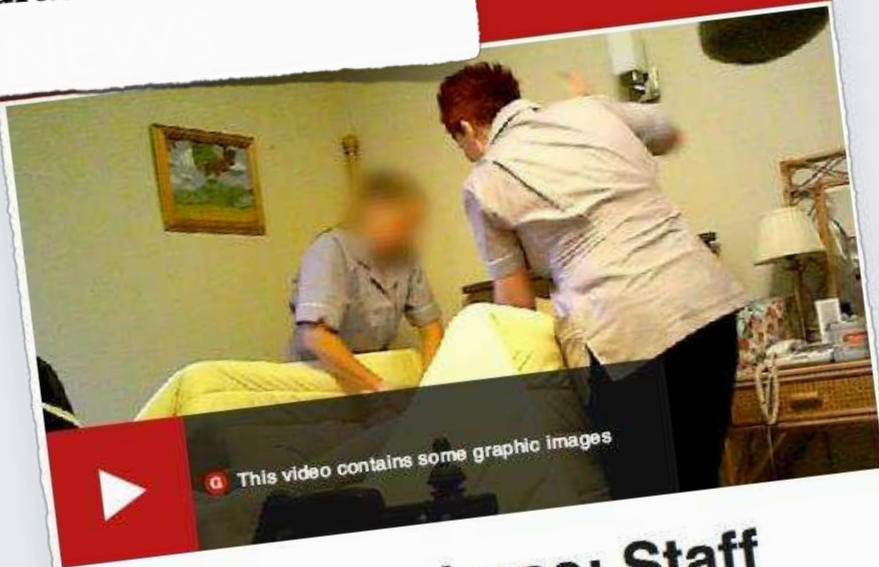


Which narratives are prominent?

THE TIMES Health News

News | Opinion | Business | Money | Sport | Life | Arts | Puzzles | Papers | Irish

Scandal of dehydration in care homes exposes neglect



This video contains some graphic images

Care home abuse: Staff sacked or suspended over poor care

BBC

Sign in

News

Sport

Weather

iPlayer

TV

Radio

NEWS

Orchid View care home scandal review 'not enough'



An inquest found all 19 people who died received "suboptimal" care and five cases involved neglect

'Catastrophic' care standards

An inquest last year found all 19 people whose deaths were unexplained had received "suboptimal" care.

Residents were left soiled and unattended, and one night shift saw staff make 28 drug errors.



Whose voices are prominent?

THE SUNDAY TIMES
NEWS | SPORT | BUSINESS | COMMENT | NEWS REVIEW | CULTURE | STYLE

Care homes warn of threat from living wage

Four Seasons boss says budget pledge will heap more pressure on cash-strapped councils

THE SUNDAY TIMES
NEWS | SPORT | BUSINESS | COMMENT | NEWS REVIEW | CULTURE | STYLE | TR

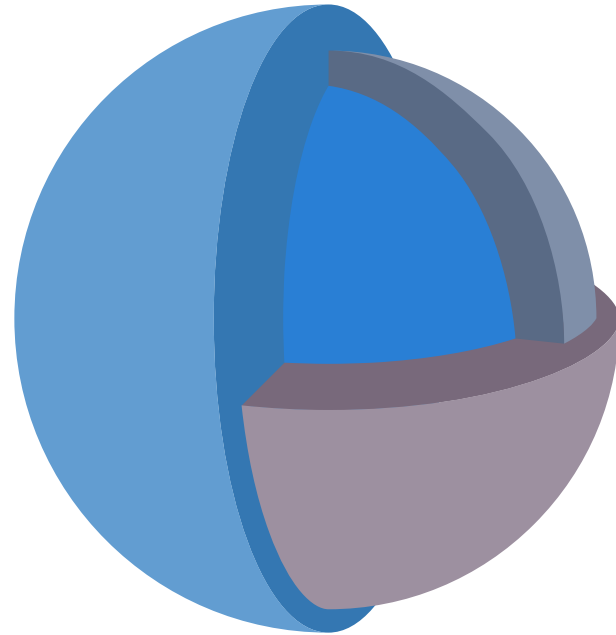
Big debts threaten ailing care home giant

Four Seasons pledges urgent action as profit is wiped out by interest bill

"The scary part is the living wage could have a £40m effect on profits over the next five years," one bondholder told the Sunday Times. "It is untenable."

The Impact of Marketisation

 **Superseding
Relatives**



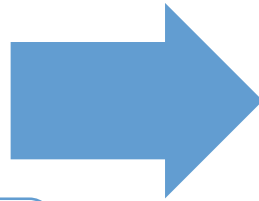
 **Creating greater
resident
vulnerability**

 **Perpetuating
Lack of
Staff Stability**

Impact on Regulating

CQC Essential Standards (2010)

- CHs should be '*meeting nutritional needs*' of the residents



CQC Fundamental Standards (2014)

- CH residents 'must have *enough to eat and drink* to keep [them] in good health'

CQC 'six-bed rule' for learning disability homes

VS.

No prescriptive bed rules or staff ratios for privately run care homes

- Non-for-profit homes perform better than for-profit ones (CQC, 2017)
- Within for-profit homes: independent ones perform better than group/large ones (Harrington et al, 2017)

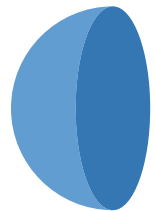
The Impact of Marketisation



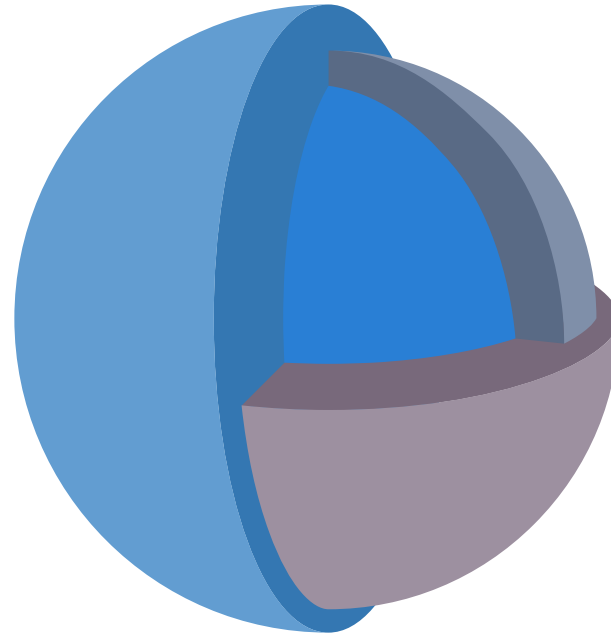
**Superseding
Relatives**



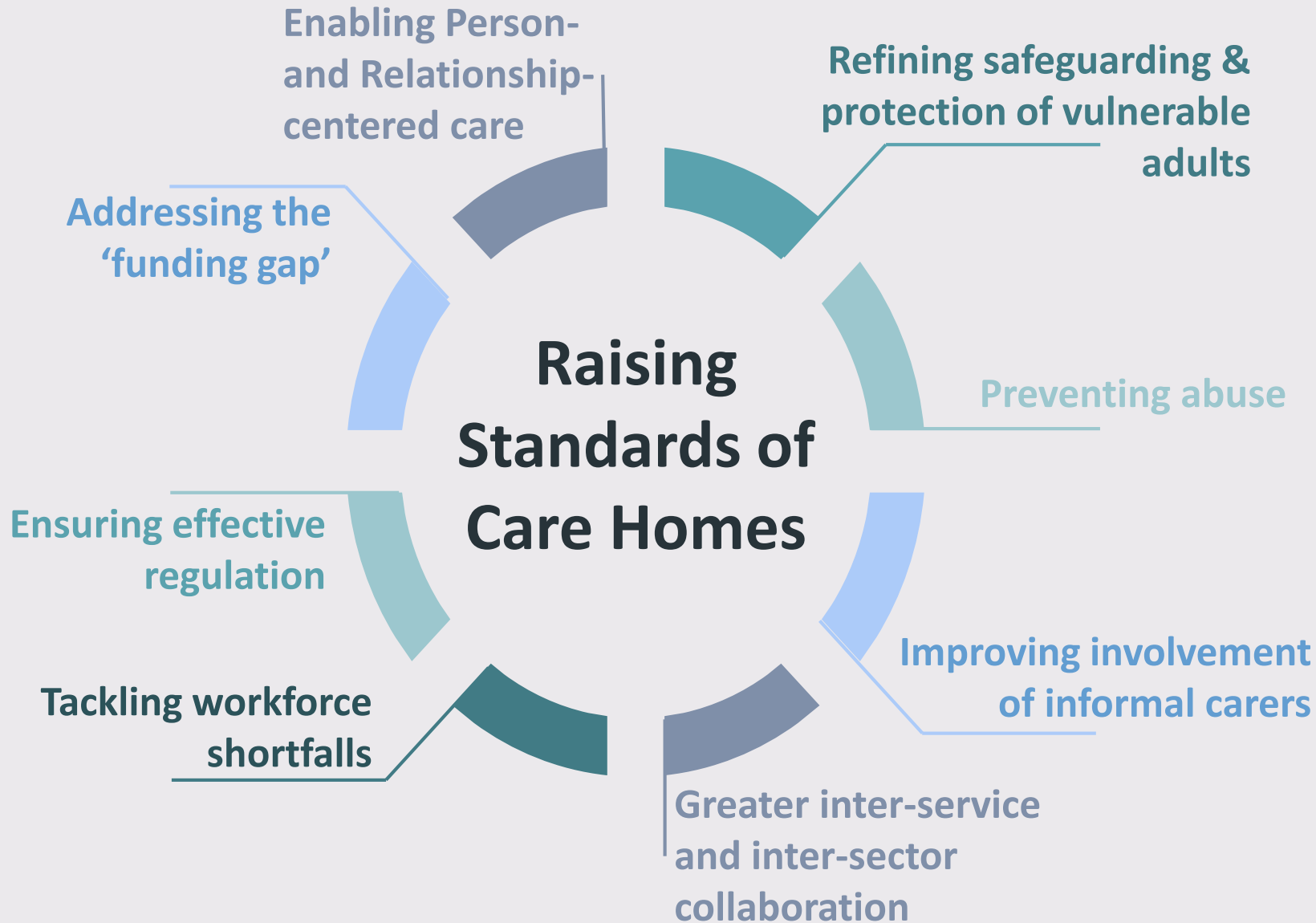
**Creating greater
resident
vulnerability**



**Impeding
Regulation &
Protection**



**Perpetuating
Lack of
Staff Stability**



Dominant Narrative:

- Care Home sector 'naturally' best placed in the hands of the market
 - Rejecting the narrative
 - Finding the way forward while acknowledging and addressing the impact of the market

References

- **Aronson, J.** (2002). Elderly people's accounts of home care rationing: missing voices in long-term care policy debates. *Ageing & Society*, 22(4), 399-418.
- **Care Quality Commission** (2017). *The State of Care 16/17*. CQC: Newcastle
- **Clarke, J., Smith, N. and Vidler, E.** (2006) 'The Indeterminacy of Choice: Political; Policy and Organisational Implications.' *Social Policy and Society*, 5(3): 327-336.
- **Comondore, V. R., Devereaux, P. J., Zhou, Q., Stone, S. B., Busse, J. W., Ravindran, N. C., ... & Walter, S. D.** (2009). Quality of care in for-profit and not-for-profit nursing homes: systematic review and meta-analysis. *Bmj*, 339, b2732.
- **Francis, R.** (2013). Report of the Mid Staffordshire NHS Foundation Trust Public Inquiry. The Stationary Office: London
- **Häggström, E., Skovdahl, K., Fläckman, B., Kihlgren, A. L., & Kihlgren, M.** (2004). To feel betrayed and to feel that you are betraying the older residents: caregivers' experiences at a newly opened nursing home. *Journal of Clinical Nursing*, 13(6), 687-696.
- **Harrington, C., Jacobsen, F. F., Panos, J., Pollock, A., Sutaria, S., & Szebehely, M.** (2017). Marketization in long-term care: a cross-country comparison of large for-profit nursing home chains. *Health services insights*, 10, 1178632917710533.
- **Harrison, J. K., Walesby, K. E., Hamilton, L., Armstrong, C., Starr, J. M., Reynish, E. L., ... & Shenkin, S. D.** (2017). Predicting discharge to institutional long-term care following acute hospitalisation: a systematic review and meta-analysis. *Age and ageing*, 46(4), 547-558.
- **Health and Social Care Information Centre** (2014). Personal Social Services: Expenditure and Unit Costs, England, 2013-14
- **Laing & Buisson** (2016). Care of elderly people: market survey 2014-15. Laing & Buisson: London
- **Lloyd, L.** (2012). *Health and care in ageing societies: a new international approach*. Policy Press.
- **Mikelyte, R., & Milne, A.** (2016). The role and influence of micro-cultures in long-term care on the mental health and wellbeing of older people: a scoping review of evidence. *Quality in Ageing and Older Adults*, 17(3), 198-214.
- **Ray, M., Milne, A., Beech, C., Phillips, J. E., Richards, S., Sullivan, M. P., ... & Lloyd, L.** (2014). Gerontological social work: Reflections on its role, purpose and value. *British Journal of Social Work*, 45(4), 1296-1312.
- **Skills for Care** (2016). The State of Adult Social Care Sector and Workforce in England. Skills for Care: Leeds
- **Welch, E., Palmer, S., Towers, A. M., & Smith, N.** (2017). Why are relatives of care home residents reluctant to “rock the boat”? Is there a culture of acceptance?. *Working with Older People*, 21(2), 124-132.