



# Kent Academic Repository

**Garcia Martinez, Marian, Zouaghi, Ferdaous, Garcia Marco, Teresa and Robinson, Catherine (2019) *What drives business failure? Exploring the role of internal and external knowledge capabilities during the global financial crisis.* Journal of Business Research, 98 . pp. 441-449. ISSN 0148-2963.**

## Downloaded from

<https://kar.kent.ac.uk/68491/> The University of Kent's Academic Repository KAR

## The version of record is available from

<https://doi.org/10.1016/j.jbusres.2018.07.032>

## This document version

Author's Accepted Manuscript

## DOI for this version

## Licence for this version

CC BY-NC-ND (Attribution-NonCommercial-NoDerivatives)

## Additional information

## Versions of research works

### Versions of Record

If this version is the version of record, it is the same as the published version available on the publisher's web site. Cite as the published version.

### Author Accepted Manuscripts

If this document is identified as the Author Accepted Manuscript it is the version after peer review but before type setting, copy editing or publisher branding. Cite as Surname, Initial. (Year) 'Title of article'. To be published in *Title of Journal*, Volume and issue numbers [peer-reviewed accepted version]. Available at: DOI or URL (Accessed: date).

## Enquiries

If you have questions about this document contact [ResearchSupport@kent.ac.uk](mailto:ResearchSupport@kent.ac.uk). Please include the URL of the record in KAR. If you believe that your, or a third party's rights have been compromised through this document please see our [Take Down policy](https://www.kent.ac.uk/guides/kar-the-kent-academic-repository#policies) (available from <https://www.kent.ac.uk/guides/kar-the-kent-academic-repository#policies>).

**What drives business failure? Exploring the role of internal and external knowledge capabilities during the global financial crisis**

**Marian Garcia Martinez<sup>1</sup>**

Kent Business School, University of Kent, UK

[m.garcia@kent.ac.uk](mailto:m.garcia@kent.ac.uk)

**Ferdaous Zouaghi**

Public University of Navarra, Pamplona, Spain

[ferdaous.zouaghi@unavarra.es](mailto:ferdaous.zouaghi@unavarra.es)

**Teresa Garcia Marco**

Public University of Navarra, Pamplona, Spain

[tgmarco@unavarra.es](mailto:tgmarco@unavarra.es)

**Catherine Robinson**

Kent Business School, University of Kent, UK

[C.Robinson-501@kent.ac.uk](mailto:C.Robinson-501@kent.ac.uk)

This is an Accepted Manuscript of an article to be published in *Journal of Business Research*.

---

<sup>1</sup> Corresponding author

# **What drives business failure? Exploring the role of internal and external knowledge capabilities during the global financial crisis**

## **Abstract**

This paper contributes to the debate on the determinants of business failure and helps to clarify the effect of internal innovation efforts and external knowledge sources in a hazard model of firm exit. Using panel data of manufacturing and service firms in Spain for the period 2009-2015, our findings show that the financial crisis increased the probability of business failure; however, firms with high levels of R&D human capital are better positioned to survive under uncertain financial conditions. In addition, we find evidence that cooperation with vertical partners reduces the effect of business failure in manufacturing sectors. This study provides new insight into the antecedents of business failure and how firms can match their business capabilities to prevailing economic conditions.

## **Keywords**

Business failure, financial crisis, internal knowledge capabilities, external knowledge assets, hazard model.

# **What drives business failure? Exploring the role of internal and external knowledge capabilities during the global financial crisis**

## **1. Introduction**

The risk of business failure is significant at any stage of business development (for a recent review of the literature on organisational survival and failure refer to Josefy et al. 2017). New ventures are particularly susceptible; according to Bhattacharjee et al. (2009) between 50% to 90% of new businesses fail as a result of micro and macroeconomic factors in the business environment. Failure by insolvency, liquidation or closure refers to the voluntary 'winding-down' of a business due to poor performance, which is viewed as an efficient reallocation of resources (Siepel et al. 2017). The decision to close down a business is jointly influenced by a variety of factors, including firm characteristics (Colombelli et al. 2013; Spaliara and Tsoukas 2013), firm-specific capabilities (Cefis and Marsili 2012), and macroeconomic conditions (Liu 2004). Bhattacharjee et al. (2009) state that firms' exits are deemed to be cyclical in nature. Bankruptcies in particular are often associated with adverse economic conditions, such as the recent financial crisis, and acquisitions are often associated with economic recoveries (Bachmann et al. 2013).

Despite increasing knowledge about the adverse effect of macro-economic instability on business survival, limited research has considered the role of knowledge in a firm's ability to avoid the risk of failure during an economic downturn (Thornhill and Amit 2003). Economic recessions present some of the most unpredictable events in the life of a business. Research from the resource-based view emphasises the importance of

knowledge in firm survival (e.g., Geroski et al. 2010). Further, the dynamic capabilities perspective posits that firms must continuously develop and extend their resources and capabilities to cope with environmental changes (Teece et al. 1997; Eisenhardt and Martin 2000; Teece 2007). We argue that internal innovation efforts and external knowledge assets are dynamic capabilities that provide firms with sources of competitive advantage (Zahra and George 2002) that might enable them to overcome adverse economic conditions. Firms with high levels of knowledge resources are found to have a lower hazard of exit (Aspelund et al. 2005). Additionally, we examine the impact of the financial crisis on business failure in manufacturing and service sectors separately. We contend that industry context can influence the effect of the economic downturn on business failure (Kim and Lee 2016).

This study makes two important contributions to the business failure literature. First, we investigate the impact of macroeconomic instabilities on firm survival in a hazard model of firm exit. Understanding the connection between business failure and fluctuations in the macro-economic factors offers new insights to theories relating to the environmental antecedents of firm survival. The life cycle hypothesis proposed by Bachmann et al. (2013) suggests that business exit rates often rise during economic downturns and the periods which follow them. Second, the paper examines how dynamic capabilities enable firms to avoid the risk of failure during economic downturns. These capabilities encompass activities through which managers continuously configure assets into viable resource combinations (Fainshmidt et al., 2017), and are likely to influence the incidence of business failure during the global financial crisis (Ahn et al. 2018; Zouaghi et al. 2018).

To test these hypotheses, we estimate a parametric hazard model assuming a Weibull distribution. Further, following the methodology proposed by Spaliara and Tsoukas (2013), we interact predictor variables with a variable that captures the financial crisis period (2009-2013). Our objective is to capture the sensitivity of business failure to internal and external knowledge capabilities 'in' and 'post' recession.

The paper is organised as follows. Section 2 provides an overview of the relevant literature and presents the research hypotheses. In Section 3, we discuss our data and estimation methodology. In Section 4, we estimate our model with a Weibull estimator selected using the Cox-Snell residuals and likelihood ratio (LR) test. We conclude by summarising the main findings and suggest directions for future research.

## **2. Theoretical background and hypotheses**

### *2.1. Internal innovation resources and business failure*

The dynamic capabilities view (Teece 2007) extends our understanding of how firms utilise their resources in volatile conditions (Wu 2010). Capabilities are often intangible resources that are acquired over time, for which there is no market and relate to a firm's own know-how in the way they combine market derived resources. As such, they offer an internal impediment to business failure, improving resilience in economic downturns (Grewal and Tansuhaj 2001). A firm's internal capabilities are manifold, ranging from organisational capabilities to innovation resources. These resources fundamentally revolve around knowledge and include investment in R&D and skilled

personnel but may also incorporate organisational capital and networking capabilities (Wu 2010).

### *2.1.1. R&D intensity*

Extant research suggests that investment in R&D improves a firm's learning capabilities, often referred to as absorptive capacity (Cohen and Levinthal 1990; Zahra and George 2002), and constitutes an important input to the development of intangible capital (Gu et al. 2016; Garcia Martinez et al. 2017). R&D capabilities enable firms to develop and maintain its broader capabilities to identify, assimilate and exploit knowledge from external sources.

Recent studies support the premise that investment in R&D reduces the risk of business failure (e.g., Cefis and Marsili 2012; Howell 2015), enhances firm survival and productivity gains (Ugur et al. 2016). Li et al. (2010) report that R&D intensity has long been regarded as a key driver of firm survival in the high-technology software industry. Similarly, Kim and Lee (2016) and Fontana and Nesta (2009) suggest that R&D intensity is a key firm-specific dynamic capability that significantly influences firm survival. In the case of service firms, internal R&D activities contribute to knowledge creation and foster combinations of new and old information necessary for the development of services and quick delivery (Amara et al. 2016). We therefore hypothesise that R&D intensity increases a firm's knowledge base and is negatively associated with business failure.

**H1.** R&D intensity is negatively associated with business failure.

### *2.1.2. R&D Human capital*

Ployhart and Moliterno (2011) define human capital as a “unit-level capability that is created from the emergence of individuals’ knowledge, skills, abilities, and other characteristics” (p. 127). Resource-based theorists argue that labour can be an important source of competitive advantage because tacit knowledge is uniquely firm-specific (Coff 1997). R&D human capital is responsible for transforming the idiosyncratic tacit and explicit knowledge, including learning abilities, experience, and abilities that are useful in carrying out firm’s activities (D’Este et al. 2014; Delgado-Verde et al. 2016). Goedhuys and Sleuwaegen (2016) state that human capital is a key driver of firm growth, reducing firm failure and the incidence of low growth. Research by Dahl and Klepper (2015) suggests that more productive firms hire more talented employees, which gives rise to enduring firm capabilities and survival over time.

Recent work by Siepel et al. (2017) highlights that both ‘general’ and ‘specific’ human capital skills in the workforce are crucial in shaping growth and survival prospects of manufacturing firms. This supports previous work by Cooper et al. (1994) showing that firms whose founders have lower levels of human capital are more likely to fail. Focussing on German start-ups, Rauch and Rijdsijk (2013) explore the relationship between growth, firm survival and human capital embedded in the entrepreneur and report that growth can hinder firm survival as resources are constrained in growing firms; however, both general and specific human capital can offset the risk of business failure. Thus, we argue that R&D human capital matters for the determination of a firm’s absorptive capacity and decreases hazard rates.



**H2.** R&D human capital is negatively associated with business failure.

### *2.2. External knowledge sources and firm survival*

Firms do not exist in isolation; the benefits of open innovation are increasingly recognised in the innovation management literature as the trend towards innovation collaboration across organisational boundaries intensifies (Schroll and Mild 2012; Podmetina et al. 2016). Extant literature shows that increasing openness is associated with the development of dynamic capabilities to cope with turbulent environments (Di Minin et al. 2010; Cruz-González et al. 2015; Zouaghi et al. 2018). During economic downturns, firms that actively engage in external collaboration exhibit a strong adaptive behaviour to ensure their survival while maintaining internal innovation capabilities for future growth (Chesbrough and Garman 2009).

Vertical alliances with suppliers and customers enable firms to learn different skills, pool complementary resources, update and modify learning routines, and access market information (Miotti and Sachwald 2003; Walsh et al. 2016), which are likely to make them stronger competitors (Silverman and Baum 2002). Supplier collaboration is found to enhance efficiency and complement the technological-base of the firm (Belderbos et al. 2004; Un and Asakawa 2015). Scholars have demonstrated the benefits of collaborating with consumers in value creation activities (Lusch and Vargo 2006; Grimpe and Sofka 2009; Garcia Martinez 2014). Cooperating with so-called lead users has been described as an important source of innovation for firms, especially in fast-paced or turbulent markets (von Hippel 2005) .

Universities, along with innovation intermediaries and consultants, government agencies and firms in other industries are all considered to be *horizontal* partners (Belderbos et al. 2004; Stefan and Bengtsson 2017). Collaboration with universities and research institutes can provide access to tailor-made, cutting-edge technologies (Tether and Tajar 2008; Tsai 2009); however, it may require firms to collaborate with other actors in order to implement the technology (Berg-Jensen et al. 2007). Also alliances with innovation intermediaries are often motivated by the need to achieve novelty goals and reduce development time (Chiaroni et al. 2008). Collaboration with competitors offers firms speedy market penetration (van Beers and Zand 2014) and access to technological abilities that can be difficult, time-consuming, and costly to develop alone (Chen et al. 2011). Therefore, we propose that external knowledge assets are more likely to reduce the risk of firm failure by enabling firms to tap into new and relevant knowledge bases and competencies.

**H3a.** Vertical collaboration is negatively associated with business failure.

**H3b.** Horizontal collaboration is negatively associated with business failure.

**H3c.** Competitor collaboration is negatively associated with business failure.

### *2.3. Moderating effects of the financial crisis*

Economic downturns are often associated with high levels of environmental uncertainty and significant downward shifts in demand levels (Cerrato et al., 2016). Investments in R&D and innovation activities become significantly riskier during periods of recession due to the uncertainties in the commercialisation of new products

and services and the generation of sufficiently high payoffs to recoup production costs (Cruz-Castro and Sanz-Menéndez 2016).

The recent financial crisis has forced many firms to postpone ongoing R&D and innovation projects (Filippetti and Archibugi 2011; Cincera et al. 2012; Paunov 2012). However, evidence show that firms are able to cope better during recession periods by having invested in R&D activities (Zouaghi et al. 2018). Archibugi et al. (2013), in their analysis of three waves of the UK Community Innovation Survey (CIS), find that the lack of internal financial resources hampered innovation during the economic crisis; however, highly innovative firms increased innovation efforts during the downturn, which helped them to overcome the challenges of operating in a slow economy.

Cruz-Castro and Sanz-Menéndez (2016) show that the Spanish public research sector was poorly equipped to resist the recent crisis, with public R&D budgets decreasing in times of recession. Similarly, Milić (2013) suggests that investment in innovation and future growth are at risk during an economic crisis, when most organizations cut their R&D budgets. Comin and Gertler (2006) provide evidence to support the pro-cyclical argument that R&D investment and the global financial crisis have reduced aggregate private investment in innovation. We therefore hypothesise that:

**H4:** The effect of R&D intensity on business failure diminishes in crisis periods.

The recent literature highlights the role of human capital during a time of crisis as a valuable resource to foster innovation and creativity. Filippetti and Archibugi (2011), for instance, show the crucial role played by qualified human resources in mitigating

the effects of the financial crisis, suggesting that the effects in terms of human capital investments are not the same across all European countries. The underlying argument is that the economic downturn has led to the migration of skilled workers, cuts in public R&D spending and education in some countries.

During periods of recession, innovation requires sufficient capabilities through investment in human capital to find ways to increase production and reduce costs, as well as sufficient financial capital either to bring in outside talent or to introduce new equipment (Bathelt et al. 2013). Goedhuys and Sleuwaegen (2016) find that human capital is a key driver of firm growth and reduces firm failure. Recent research by Dahl and Klepper (2015) suggest that more productive firms hire more talented employees, which gives rise to enduring firm capabilities and survival over time. These findings are supported by Day (2016) who predicts that R&D and human capital accumulation will continue to sustain economic growth under uncertain conditions. Thus, we hypothesise that:

**H5:** The effect of R&D human capital on business failure diminishes in crisis periods.

Cooperation with different partners has become more attractive for firms during uncertain economic conditions to access new knowledge, skills and capabilities leading to long-term survival (Chesbrough and Garman 2009; Di Minin et al. 2010). Abramovsky et al. (2005) concluded that firms favour cooperative strategies to overcome the perceived high risks of innovation and financial constraints. Cerrato et al. (2016) report a positive relationship between crossbreed acquisitions and long-term

firm performance during a crisis. Partnering with firms that possess complementary assets leads to superior performance and help firms to survive longer (Velu 2015).

Collaborative approaches, given their double aim of pooling knowledge and sharing costs and risks of R&D activities, should increase in periods of economic downturn in order to support firms' innovation capabilities (Laperche et al. 2011). Extant literature on open innovation argues that firms use external collaboration to boost innovative performance and meet new business challenges (Dahlander and Gann 2010; Huizingh 2011; Lichtenthaler 2011). Thus, we hypothesise that a mitigating effect of collaboration on business failure in times of economic crisis.

**H6a:** The effect of vertical collaboration on business failures diminishes in crisis periods

**H6b:** The effect of horizontal collaboration on business failures diminishes in crisis periods

**H6c:** The effect of competitor collaboration on business failures diminishes in crisis periods

### **3. Methodology**

#### *3.1. Data and sample*

Data for the quantitative analysis are drawn from the Spanish Technological Innovation Panel (PITEC); a statistical instrument for studying innovation activities of Spanish companies over time. The database is compiled by the Spanish National Statistics Institute (INE), in collaboration with the Spanish Science and Technology Foundation

(FECYT) and the Foundation for Technological Innovation (COTEC). The PITEC dataset contains panel data for more than 13,000 firms since 2003 and includes both manufacturing and service sector firms. Each firm in the sample has a unique identification code, which allows us to keep track of its entry date and current status. If a firm appears with a new identification code in the database, it is regarded as a new entry (Kim and Lee 2016). If a code for an existing company disappears from the database due to a business closure, it is regarded as an exit. If the code remains in a given year, the firm is considered to be a surviving firm. In this study, we include firm-level data for the period 2009-2015<sup>2</sup>, for both manufacturing and service firms since we contend that the industry context can influence the effects of the economic downturn on business failure.

### 3.2. Measures

*Dependent variable.* The dependent variable is business failure related to the firm time that it has taken the company to reach the risk to go out (situation of failure). We examine the exits of firms between 2009-2015. In our study, the failure analysis is based on firm exits due to closure (Howell 2015; Ugur et al. 2016). The data is left censored at 2009 since the entry date is unobserved (because the sample starts in 2009) and right censored at 2015 since we have not observed all potential exits for that year.

---

<sup>2</sup> The age of the company is available from 2009.

### *Independent variables*

*R&D intensity* is defined as a firm's R&D expenditure as a proportion of the firm's total sales (Kim and Lee, 2016). R&D intensity is extensively used in innovation research as an innovation input measure (Mairesse and Mohnen 2010). Ugur et al. (2016) report a strong relationship between R&D intensity and firm survival.

*R&D human capital* is measured as the percentage of highly skilled R&D workers (researchers and technicians) (Vogel 2013). Highly qualified employees are regarded as a significant factor in innovation performance (Teirlinck 2017).

*External knowledge sources:* In line with previous studies (e.g., Ciliberti et al. 2016; Stefan and Bengtsson 2017), we distinguish between three types of external collaborations: vertical collaboration (suppliers and consumers), horizontal collaboration (commercial research institutions and consultancy firms, private laboratories and consultants, universities and educational institutions, public and non-profit research institutions) and competitor collaboration. Following Laursen and Salter (2006), *collaboration depth* was defined as the intensity of collaboration with each partner type. In the survey, firms are asked to indicate using a four-point Likert scale the intensity of collaboration with each external knowledge source (ranging from 0 = "not used" to 4 = "highly used"). Each source is then coded as a binary variable in which 1 represents an external knowledge source used to a high degree (4) and 0 when a given source is not used, or only to a low or medium degree (0 to 3).

*Financial crisis:* we consider two time periods: recession (2009-2013) and post-recession<sup>3</sup> (2014-2015), to better understand the long-term effects of the financial crisis on the likelihood of business failure. We are interested in whether the impact of internal and external knowledge sources on business failure is significantly different between the two time periods. We specify a year dummy to take account of the financial crisis as an indicator of downswings (Ugur et al. 2016) that takes the value 1 in years 2009–2013, and 0 otherwise (2014-2015). Following the methodology proposed by Spaliara and Tsoukas (2013), we interact our independent variables with the financial crisis variable to capture the sensitivity of business failure to internal innovation resources and external knowledge sources ‘in’ and ‘post’ financial crisis.

*Control variables.* *Firm size* is measured as a dummy variable that takes the value 1 if the number of employees equals or is greater than 200, and 0 otherwise. Large firms are at less risk of failure compared to small firms as they have access to alternative sources of finance and are less informationally opaque (Spaliara and Tsoukas 2013).

*Labour productivity* is defined as the natural logarithm of firm sales divided by the total number of employees (Ugur et al., 2016). Finally, we test whether firms’ exit behaviour is closely linked to their industry affiliation (Kim and Lee, 2016) by controlling for *industry effects* following the OECD classification of industries in terms of technology and knowledge intensity (OECD 2005). We create four industry dummies to identify manufacturing firms belonging to high-tech, medium-high, medium-low and low-tech industries; and two dummy variables for service industries: knowledge-intensive

---

<sup>3</sup> When GDP started to be positive in Spain



business and low knowledge-intensive business services. We use the high-tech industry as the baseline for manufacturing models and the knowledge-intensive services for service models. Table A.1 in Appendix A describes the variables used in this study.

### *3.3. Hazard model*

We use survival analysis to examine the impact of internal and external knowledge capabilities on business failure. Hazard models are suitable for disentangling the determinants of firm failure since they account for both the probability of failure and the time-duration until failure (Nilsson 2016). Standard regression approaches, such as ordinary least square (OLS) are not appropriate for the analysis of survival data because they do not correct for the problem of right censored variables (Talay et al. 2014; Velu 2015). In this study, not all firms in the database have failed by the end of our period of analysis. Survival analysis can cope with right censored data which represents situations where a failure event has not yet occurred and with time-series data with different time horizons (Jenkins 1995).

The cumulative distribution function of the duration time  $T$  is denoted as  $F$  and defined as :

$$F(t) = P_r(T \leq t) \text{ with } t \geq 0 \quad (1)$$

This function gives the probability that the duration  $T$  is less than or equal to  $t$ .

The survival probability is given by:

$$P_r(T > t) = 1 - F(t) \equiv S(t) \quad (2)$$

which gives the probability of being alive just before period  $t$ , or more generally, the probability that the event of interest (in our case, closures) has not occurred by duration  $t$ . Then, the hazard function  $h(t)$  is the conditional failure rate defined as the probability of exit during a very small time interval assuming the firm has survived to the beginning of that interval. The hazard of exit, the dependent variable in this study, is defined as the instantaneous rate of occurrence of the event (exit) at time  $t$ . The hazard function is given by:

$$\lambda(t) = \lim_{dt \rightarrow 0} \frac{P_r\{t \leq t + dt | T \geq t\}}{dt} \quad (3)$$

where  $dt$  is a very small interval, the numerator of this expression is the conditional probability that the event will occur in the interval  $[t, t+dt]$  given that it has not occurred before, and the denominator is the width of the interval.

We rejected a Cox proportional hazard model because it failed the Schoenfeld (1982) residuals tests of the proportionality assumption (Ugur et al. 2016). As a result, we estimated five parametric survival models: exponential, lognormal, Weibull, Gompertz, and log-logistic, where survival can be estimated in proportional hazard (PH) or accelerated failure time (AFT) metrics. We selected the optimal model using the fit level in the Cox-Snell residuals plots and the likelihood ratio (LR) test. Both sets of criteria favoured the Weibull distribution.

Therefore, our hypotheses were tested using the Weibull model for the parametric hazard model not only to address the right-censuring problem, but also to analyse the effect of various covariates on a probability of failure model.

The survivor function is then  $S(t) = e^{-(\lambda t)^p}$ . The model used describes a proportional

hazard model which can be formally represented by the following equation:

$$h(t) = h_0(t) \exp(X \beta) \quad (4)$$

Where  $h(t)$  is the hazard rate at time  $t$  and  $h_0(t)$  is a baseline hazard rate, which is

$h_0(t) = p\lambda^p t^{p-1}$  and  $\beta$  corresponds to the estimate coefficients.

All results (descriptive and estimations) are based on weighted data in order to be representative of the population of Spanish firms. The data was weighted back to the total business population reported by the Spanish National Institute of Statistics (INE, DIRCE)<sup>4</sup>.

---

<sup>4</sup> The data is available at this link: [http://www.ine.es/dyngs/INEbase/es/operacion.htm?c=Estadistica\\_C&cid=1254736160707&menu=resultados&idp=1254735576550](http://www.ine.es/dyngs/INEbase/es/operacion.htm?c=Estadistica_C&cid=1254736160707&menu=resultados&idp=1254735576550)

#### **4. Results**

Table 1 reports means and standard deviations for the variables used in the empirical study: total sample (column 1), failed and surviving firms (columns 2 and 3) and firms during and after the crisis (columns 5 and 6). Further, the p-values of a test for the equality of means are presented in columns 4 and 7. Looking at columns 2 and 3 we observe that surviving firms are less engaged in R&D activities, although have more skilled workers, are more active in collaborative relationships, more profitable and more larger-sized compared to failing firms.

**Insert Table 1 here**

Table 2 reports the descriptive statistics and the correlation matrix for the variables used in the empirical study (with the exception of sectoral dummies). Correlation values among all variables are generally low to moderate, suggesting there is a low risk of facing collinearity issues with this set of variables.

**Insert Tables 2 here**

Figure 1 shows the plot of estimated hazard functions, for manufacturing and service separately. The hazard experienced by firms increases over time; low-tech manufacturing firms are more likely to fail compared to high-tech industries. Similarly, the hazard rate for low-knowledge intensive service firms is higher than for knowledge intensive firms.

**Insert Figure 1 here**

Tables 3 and 4 present the results using the Weibull hazard model with unobserved heterogeneity for manufacturing and service firms, respectively. When the coefficient of the hazard model is larger than 1, it implies that, as the covariate increases, so does the hazard rate (i.e., the time of exit of a firm is advanced). On the other hand, when the coefficient of the hazard model is less than 1, as the covariate increases, the hazard rate decreases (i.e., the time of exit of a firm is delayed). Robust standard errors are presented in parentheses (de Figueiredo and Kyle 2006; Velu 2015). For both sectors, we estimated six model specifications. Model 1 includes the explanatory variables and control variables. Models 2 to 6 include the interaction terms for the independent variables and the financial crisis covariate.

The coefficient for the direct relationship between the financial crisis and the hazard rate is significant and greater than 1, showing that the financial crisis is an important factor in explaining business failure (Table 3 and 4 – Model 1). Hypothesis 1 states that high R&D intensity will decrease the likelihood of firm failure. The coefficient for the direct relationship between R&D intensity and the hazard rate is significant and greater than 1 for both sectors (Tables 3 and 4 – Model 1), suggesting that R&D intensity reduces the probability of firm survival. Hence, Hypothesis 1 is not supported. Hypothesis 2 states that high levels of human capital will decrease the likelihood of firm failure. The coefficient for the direct relationship between R&D human capital and the hazard rate is significant and less than 1 (Tables 3 and 4 – Model 1), showing that R&D human capital is an important factor explaining firm survival in manufacturing and service sectors. Hence, Hypothesis 2 is supported.

Hypotheses 3a-3c state that external knowledge assets will decrease the likelihood of firm failure. Results show differential effects for manufacturing and service sectors, supporting our hypothesising that the determinants of business failure differ across sectors where firms face different technological opportunities. In the case of manufacturing firms, the coefficients for the direct relationship between vertical and horizontal collaboration and the hazard rate are significant and less than 1, suggesting the importance of vertical and horizontal collaboration in explaining manufacturing firms' survival. In contrast, the coefficient for the direct relationship between competitor collaboration and the hazard rate is significant but greater than 1. For service firms, the coefficients for the direct relationship between horizontal collaboration and the hazard rate are significant and less than 1, suggesting the importance of horizontal collaboration in explaining service firms survival. However, the coefficients of both vertical and competitor partners are not significant. Hence, Hypothesis 3 is partially supported.

Hypothesis 4 states that the relationship between R&D intensity and business failure diminishes due to the financial crisis. Model 2 (Tables 3 and 4) shows that the coefficient for the direct relationship between the financial crisis and the hazard rate is significant and greater than 1, suggesting that the financial crisis is an important factor in increasing the likelihood of business failure. However, the interaction between R&D intensity and the financial crisis is not significant; hence, H4 is not supported.

Hypothesis 5 states that the relationship between R&D human capital and business failure diminishes due to the financial crisis. Model 3 (Tables 2 and 3) shows that the

interaction term between R&D human capital and financial crisis is significant and less than 1 for service firms only. This suggests that R&D human capital reduces the effect of service firm failure in times of recession compared to a post recession period. In order to understand better how the financial crisis affects the relationship between R&D human capital and firm failure, we conduct an effect size interpretation of the interaction term using the non-exponentiated coefficients of the hazard model (Velu 2015).

Interpreting interaction coefficients in hazard models is perhaps less graph-friendly; however, the non-exponentiated coefficients provide rich information (Trevor 2001). Using the unstandardized coefficient of the model with the interaction term, we multiply the raw interaction coefficient by the high and low levels of the moderator (for instance, 1 and -1 to account for a one standard deviation increase or decrease in the variable of interest). Adding the interaction term to the raw main effect coefficient produces two coefficients that, at high and low levels of the moderator represent the total effects of a one-standard-deviation increase in the predictor of interest on the lagged hazard rate (Trevor 2001). Exponentiating these coefficients produces hazard rate multipliers that are associated with a one-standard-deviation increase in the predictor's effect at high and low levels of the moderator.

According to Table 4 (Model 3), the hazard ratios of R&D human capital and the interaction term between R&D human capital and financial crisis are 0.98 and 0.99, respectively. This gives non-exponentiated coefficients of -0.02 and -0.01, respectively. Therefore, a one standard-deviation increase in R&D human capital results in a 0.97

multiplier ( $\exp [-0.02-0.01]$ ) of the hazard rate, and a 3 per cent ((hazard rate multiplier-1) x 100) decrease in the failure rate for manufacturing firms at any time  $t$ , when in a recession period. The same increase in R&D human capital translates to a 0.99 multiplier and a 1 per cent decrease in the failure rate for manufacturing firms at any time  $t$  when in a post-recession period. Thus, at the height of recession, the effect of R&D human capital on firm survival is over 2 times larger than in the post-recession period. R&D human capital has a greater impact in reducing service firm failure during recession periods compared to post-recession periods.

Hypotheses 6a-6c state that the relationship between external collaboration and business failure will diminish in times of financial crisis. Model 4 (Tables 2 and 3) shows that the interaction term between vertical collaboration and financial crisis is significant and less than 1 for manufacturing firms only, suggesting that cooperation with vertical partners reduces the effect of manufacturing firm failure by 23% and service firm failure by 8 % in recession period compared to post-recession.

Finally, Model 6 (Tables 2 and 3) shows that the interaction term between competitor collaboration and financial crisis is significant and less than 1 for both service and manufacturing firms. Thus, the effect of competitor collaboration on firm failure during the recession is around 11 and 40 times larger compared to post-recession, for manufacturing and service firms, respectively.

**Insert Tables 3 and 4**



## 5. Discussion and conclusion

The main objective of this paper is to examine the effect of internal and external knowledge sources on business failure, distinguishing between recession and post-recession periods. Using a hazard model, this paper shows the differential effects of internal innovation capabilities and external knowledge sources on business failure. Our results support the view that the financial crisis increases the probability of business failure. During the economic downturn, firms are likely to face more turbulent and uncertain environments, and therefore are more exposed to failure (Colombelli et al. 2013). Bhattacharjee et al. (2009) find that a larger number of firms are more likely to go bankrupt during unstable years characterized by high inflation and unfavourable exchange rate changes. In line with our results, Martin-Rios and Parga-Dans (2016) conclude that the economic crisis resulted in a fall in firm survival. Financial crises are often associated with high levels of environment uncertainty and significant downward shifts in the demand level which result in declining revenues and declining profits (Cerrato et al. 2016). Ugur et al. (2016) report that the macroeconomic environment at times of financial crisis is likely to reduce survival time.

Consistent with the dynamic capability perspective (Teece et al. 1997), our results confirm that R&D human capital, as a dynamic capability, provides firms with sources of competitive advantage. We find that R&D human capital is a valuable internal capability for firm survival. These findings support the extant literature (Pennings et al.

1998; Siepel et al. 2017) by demonstrating that investments in human assets help shape the life prospects of a firm. Additionally, results highlight the key importance of human capital resources in mitigating the effects of the financial crisis on firm failure. This effect seems to be more important for service firms, where human capital has a strong and positive association with firm survival. Highly qualified staff play an important role in service firms to sustain long-standing relationship with their clients and to cope with external environment changes (Pennings et al. 1998; Thakur and Hale 2013; Martin-Rios and Parga-Dans 2016). Human capital is a source of sustainability and plays an important role in the success of firms. Investments in R&D human capital are essential for the service sector; this may be due to the survival of those firms under conditions of high competition requiring resources and capabilities to cope with turbulent market conditions. Fainshmidt et al. (2017) also note that a firm's human resources management helps hedge against economic downturns.

This study provides valuable insights into the importance of external knowledge assets in times of crisis for firm survival. Our empirical evidence confirms that manufacturing industries benefit from vertical collaboration which enhances their survival during the recessions. Consistent with our findings, George et al. (2001) showed that external relationships with clients reduce the risk of organisational failure. Furthermore, access to research and institutional sources from research or intermediary knowledge organizations can be important strategies for mitigating the risks of manufacturing firm failure. Our empirical analysis demonstrates that manufacturing firms that collaborate with horizontal partners are more likely to overcome economic downturns. However, the relationship with competitors can hinder firm survival especially in time of crisis.

### *5.1. Contributions and managerial implications*

Several managerial implications follow from this discussion and offer managers insights into the failure trap. First, firms that understand the factors associated with exit decision are more likely to build capabilities to mitigate the likelihood with failure. Second, policies aiming at promoting firm survival should differ across sectors, given that the degree of effectiveness of the factors influencing firm failure differs across sectors. Explaining the role of internal and external knowledge capabilities as sources of firm survival differentials among different sectors may help managers to take advantage of more efficient bundles of these resources to achieve firm long-term viability.

Manufacturing managers maintain their investment in R&D activities in order to build their internal resources base for enhancing its efficiency and survive longer. R&D activities as a dynamic capability can help manufacturing firms' survival prospects and better adapt to an economic crisis. Our empirical research has shown the crucial role played by human capital in decreasing the effects of the crisis particularly in service sector firms. Managers in service firms need to invest in building a broad skills base to mitigate firm failure during the crisis period and to ensure long-term survival. Intangible human capital inside a firm is an idiosyncratic resource and difficult to imitate. Third, the analysis of external sources of knowledge enables managers to identify the types of external partner that provide the right knowledge assets to reduce the likelihood of firm failure.

## *5.2. Limitations and future research*

This paper focuses on innovative firms due the particularity of the PITEC database which provides exclusively innovation indicators for innovative firms. A more diverse sample of firms may generate different results, but would not have as detailed information on firm specific capabilities. Second, our dataset is specific to firms in Spain so evidence from other countries on the factors influencing firm failure might help to develop more general empirical evidence in future research. Third, another limitation of our database is the anonymization of some variables in order to avoid disclosure. The anonymization process applied requires the following modifications: a) replacing the firm-level observations of five quantitative variables (Turnover, Investment, Number of employees, Innovation expenditures and Number of R&D employees) with data generated by means of a “hiding” process of the original observations; b) replacing the firm-level observations of the rest of the quantitative variables with the percentage value with respect to the aggregated value (for example, intramural R&D expenditure is replaced by the percentage of intramural R&D expenditure on total innovation expenditure).

## References

- Abramovsky, L., Kremp, E., Lopez, A., Schmidt, T. & Simpson, H. Understanding Cooperative R&D Activity: Evidence from Four European Countries
- Ahn, J. M., Mortara, L. & Minshall, T. (2018). Dynamic capabilities and economic crises: has openness enhanced a firm's performance in an economic downturn? *Industrial and Corporate Change*, 27, 49-63.
- Amara, N., D'Este, P., Landry, R. & Doloreux, D. (2016). Impacts of obstacles on innovation patterns in KIBS firms. *Journal of Business Research*, 69, 4065-4073.
- Archibugi, D., Filippetti, A. & Frenz, M. (2013). The impact of the economic crisis on innovation: evidence from Europe. *Technological Forecasting and Social Change*, 80, 1247-1260.
- Aspelund, A., Berg-Utby, T. & Skjevdal, R. (2005). Initial resources' influence on new venture survival: a longitudinal study of new technology-based firms. *Technovation*, 25, 1337-1347.
- Bachmann, R., Elstner, S. & Sims, E. R. (2013). Uncertainty and Economic Activity: Evidence from Business Survey Data. *American Economic Journal: Macroeconomics*, 5, 217-249.
- Bathelt, H., Munro, A. K. & Spigel, B. (2013). Challenges of transformation: innovation, re-bundling and traditional manufacturing in Canada's technology triangle. *Regional Studies*, 47, 1111-1130.

- Belderbos, R., Carree, M. & Lokshin, B. (2004). Cooperative R&D and firm performance. *Research Policy*, 33, 1477-1492.
- Berg-Jensen, M., Johnson, B., Lorenz, E. & Lundvall, B. A. (2007). Forms of knowledge and modes of innovation. *Research Policy*, 36, 680-693.
- Bhattacharjee, A., Higson, C., Holly, S. & Kattuman, P. (2009). Macroeconomic instability and business exit: Determinants of failures and acquisitions of UK firms. *Economica*, 76, 108-131.
- Cefis, E. & Marsili, O. (2012). Going, going, gone. Exit forms and the innovative capabilities of firms. *Research Policy*, 41.
- Cerrato, D., Alessandri, T. & Depperu, D. (2016). Economic crisis, acquisitions and firm performance. *Long Range Planning*, 49, 171-185.
- Chen, J., Chen, Y. & Vanhaverbeke, W. (2011). The influence of scope, depth, and orientation of external technology sources on the innovative performance of Chinese firms. *Technovation*, 31, 362-373.
- Chesbrough, H. & Garman, A. R. (2009). Use Open Innovation to Cope in a Downturn. *Harvard Business Review*, June, 1-9.
- Chiaroni, D., Chiesa, V., Massis, A. D. & Frattini, F. (2008). The knowledge-bridging role of Technical and Scientific Services in knowledge-intensive industries. *International Journal of Technology Management*, 41, 249-272.

- Ciliberti, S., Carraresi, L. & Bröring, S. (2016). External Knowledge Sources as Drivers for Cross-Industry Innovation in the Italian Food Sector: Does Company Size Matter? *International Food and Agribusiness Management Review*, 19, 77-98.
- Cincera, M., Cozza, C., Tübke, A. & Voigt, P. (2012). Doing R&D or not (in a crisis), that is the question. *European Planning Studies*, 20, 1525-1547.
- Coff, R. W. (1997). Human Assets and Management Dilemmas: Coping With Hazards On the Road to Resource-Based Theory. *Academic Management Review*, 22, 374-402
- Cohen, W. M. & Levinthal, D. A. (1990). Absorptive capacity: a new perspective on learning and innovation. *Administrative Science Quarterly*, 35, 128-152.
- Colombelli, A., Krafft, J. & Quattraro, F. (2013). Properties of knowledge base and firm survival: Evidence from a sample of French manufacturing firms. *Technological Forecasting and Social Change*, 80, 1469-1483.
- Comin, D. & Gertler, M. (2006). Medium-term business cycles. *The American Economic Review*, 96, 523-551.
- Cooper, A. C., Gimeno-Gascon, F. J. & Woo, C. Y. (1994). Initial human and financial capital as predictors of new venture performance. *Journal of Business Venturing*, 9, 371-395.

- Cruz-Castro, L. & Sanz-Menéndez, L. (2016). The effects of the economic crisis on public research: Spanish budgetary policies and research organizations. *Technological Forecasting and Social Change*, 133, 157-167.
- Cruz-González, J., López-Sáez, P., Navas-López, J. E. & Delgado-Verde, M. (2015). Open search strategies and firm performance: The different moderating role of technological environmental dynamism. *Technovation*, 35, 32-45.
- D'Este, P., Rentocchini, F. & Vega-Jurado, J. (2014). The role of human capital in lowering barriers to engage in innovation: Evidence from the Spanish Innovation Survey. *Industry and Innovation*, 21, 1-19.
- Dahl, M. S. & Klepper, S. (2015). Whom do new firms hire? *Industrial and Corporate Change*, 24, 819-836.
- Dahlander, L. & Gann, D. M. (2010). How open is innovation? *Research Policy*, 39, 699-709.
- Day, C. (2016). Non-Scale Endogenous Growth with R&D and Human Capital. *Scottish Journal of Political Economy*, 63, 443-467.
- de Figueiredo, J. M. & Kyle, M. K. (2006). Surviving the gales of creative destruction: the determinants of product turnover. *Strategic Management Journal*, 27, 241-264.



- Delgado-Verde, M., Martín-de Castro, G. & Amores-Salvadó, J. (2016). Intellectual capital and radical innovation: Exploring the quadratic effects in technology-based manufacturing firms. *Technovation*, 54, 35-47.
- Di Minin, A., Frattini, F. & Piccaluga, A. (2010). Fiat: open innovation in a downturn (1993–2003). *California Management Review*, 52, 132-159.
- Eisenhardt, K. M. & Martin, J. A. (2000). Dynamic Capabilities: What are They? *Strategic Management Journal*, 21, 1105-1111.
- Fainshmidt, S., Nair, A. & Mallon, M. R. (2017). MNE performance during a crisis: An evolutionary perspective on the role of dynamic managerial capabilities and industry context. *International Business Review*.
- Filippetti, A. & Archibugi, D. (2011). Innovation in times of crisis: National Systems of Innovation, structure, and demand. *Research Policy*, 40, 179-192.
- Fontana, R. & Nesta, L. (2009). Product innovation and survival in a high-tech industry. *Review of Industrial Organization*, 34, 287-306.
- Garcia Martinez, M. (2014). Co-creation of Value by Open Innovation: Unlocking New Sources of Competitive Advantage. *Agribusiness*, 30, 132-147.
- Garcia Martinez, M., Zouaghi, F. & Sanchez Garcia, M. (2017). Capturing value from alliance portfolio diversity: The mediating role of R&D human capital in high and low tech industries. *Technovation*, 59, 55-67.

- George, G., Zahra, S. A., Wheatley, K. K. & Khan, R. (2001). The effects of alliance portfolio characteristics and absorptive capacity on performance: A study of biotechnology firms. *The Journal of High Technology Management Research*, 12, 205-226.
- Geroski, P. A., Mata, J. & Portugal, P. (2010). Founding conditions and the survival of new firms. *Strategic Management Journal*, 31, 510-529.
- Goedhuys, M. & Sleuwaegen, L. (2016). High-growth versus declining firms: the differential impact of human capital and R&D. *Applied Economics Letters*, 23, 369-372.
- Grewal, R. & Tansuhaj, P. (2001). Building Organizational Capabilities for Managing Economic Crisis: The Role of Market Orientation and Strategic Flexibility. *Journal of Marketing*, 65, 67-80.
- Grimpe, C. & Sofka, W. (2009). Search partners and absorptive capacity: low- and high-technology sectors in European countries. *Research Policy*, 38, 495-506.
- Gu, Q., Jiang, W. & Wang, G. G. (2016). Effects of external and internal sources on innovation performance in Chinese high-tech SMEs: A resource-based perspective. *Journal of Engineering and Technology Management*, 40, 76-86.
- Howell, A. (2015). 'Indigenous' innovation with heterogeneous risk and new firm survival in a transitioning Chinese economy. *Research Policy*, 44, 1866-1876.

- Huizingh, E. K. R. E. (2011). Open innovation: State of the art and future perspectives. *Technovation*, 31, 2-9.
- Jenkins, S. P. (1995). Easy Ways To Estimate Discrete Time Duration Models. *Oxford Bulletin of Economics and Statistics*, 57, 129-138.
- Josefy, M. A., Harrison, J. S., Sirmon, D. G. & Carnes, C. (2017). Living and Dying: Synthesizing the Literature on Firm Survival and Failure across Stages of Development. *Academy of Management Annals*, 11, 770-799.
- Kim, J. & Lee, C. Y. (2016). Technological regimes and firm survival. *Research Policy*, 45, 232-243.
- Laperche, B., Lefebvre, G. & Langlet, D. (2011). Innovation strategies of industrial groups in the global crisis: Rationalization and new paths. *Technological Forecasting and Social Change*, 78, 1319-1331.
- Laursen, K. & Salter, A. (2006). Open for innovation: the roles of openness in explaining innovation performance among UK manufacturing firms. *Strategic Management Journal*, 27, 131-150.
- Li, S., Shang, J. & Slaughter, S. A. (2010). Why do software firms fail? Capabilities, competitive actions, and firm survival in the software industry from 1995 to 2007. *Information Systems Research*, 21, 631-654.
- Lichtenthaler, U. (2011). Open Innovation: Past Research, Current Debates, and Future Directions. *The Academy of Management Perspectives*, 25, 75-93.

- Liu, J. (2004). Macroeconomic determinants of corporate failures: evidence from the UK. *Applied Economics*, 36, 939-945.
- Lusch, R. P. & Vargo, S. L. (2006). *The service dominant logic of marketing: dialog, debate and directions*. Armonk, NY: M.I. Sharpe,
- Mairesse, J. & Mohnen, P. (2010). *Using innovation surveys for econometric analysis*. In: B. H. Hall, N. Rosenberg editors. *Handbook of the Economics of Innovation*.
- Martin-Rios, C. & Parga-Dans, E. (2016). Service response to economic decline: Innovation actions for achieving strategic renewal. *Journal of Business Research*, 69, 2890-2900.
- Milić, T. (2013). Innovation Management in Times of Economic Crisis. *Management Journal for Theory and Practice Management*, 81-88.
- Miotti, L. & Sachwald, F. (2003). Co-operative R&D: why and with whom?: An integrated framework of analysis. *Research Policy*, 32, 1481-1499.
- Nilsson, P. (2016). The influence of related and unrelated industry diversity on retail firm failure. *Journal of Retailing and Consumer Services*, 28, 219-227.
- OECD. (2005). *Oslo Manual. Guidelines for Collecting and Interpreting Innovation*. 3rd Edition. Paris: OECD Publications,
- Paunov, C. (2012). The global crisis and firms' investments in innovation. *Research Policy*, 41, 24-35.

- Pennings, J. M., Lee, K. & Van Witteloostuijn, A. (1998). Human capital, social capital, and firm dissolution. *Academy of Management Journal*, 41, 425-440.
- Ployhart, R. E. & Moliterno, T. P. (2011). Emergence of the Human Capital Resource: A Multilevel Model. *Academy of Management Review*, 36, 127-150.
- Podmetina, D., Teplov, R., Albats, E. & Dabrowska, J. (2016). Perception vs Reality: the Adoption of Open Innovation in European Companies. *Academy of Management Proceedings*, 2016, 17799.
- Rauch, A. & Rijdsdijk, S. A. (2013). The Effects of General and Specific Human Capital on Long-Term Growth and Failure of Newly Found Businesses. *Entrepreneurship Theory and Practice*, 37, 923-941.
- Schoenfeld, D. (1982). Partial residuals for the proportional hazards regression model. *Biometrika*, 69, 239-241.
- Schroll, A. & Mild, A. (2012). A critical review of empirical research on open innovation adoption. *Journal fur Betriebswirtschaft*, 62, 85-118.
- Siepel, J., Cowling, M. & Coad, A. (2017). Non-founder human capital and the long-run growth and survival of high-tech ventures. *Technovation*, 59, 34-43.
- Silverman, B. S. & Baum, J. A. C. (2002). Alliance-Based Competitive Dynamics. *Academy of Management Journal*, 45, 791-806.

- Spaliara, M. E. & Tsoukas, S. (2013). What matters for corporate failures in Asia? Exploring the role of firm-specific characteristics during the Asian crisis. *Structural Change and Economic Dynamics*, 26, 83-96.
- Stefan, I. & Bengtsson, L. (2017). Unravelling appropriability mechanisms and openness depth effects on firm performance across stages in the innovation process. *Technological Forecasting and Social Change*, 120, 252-260.
- Talay, M. B., Calantone, R. J. & Voorhees, C. M. (2014). Coevolutionary dynamics of automotive competition: Product innovation, change, and marketplace survival. *Journal of Product Innovation Management*, 31, 61-78.
- Teece, D. J. (2007). Explicating dynamic capabilities: the nature and microfoundations of (sustainable) enterprise performance. *Strategic Management Journal*, 28, 1319-1350.
- Teece, D. J., Pisano, G. & Shuen, A. (1997). Dynamic Capabilities and Strategic Management. *Strategic Management Journal*, 18, 509-533.
- Teirlinck, P. (2017). Configurations of strategic R&D decisions and financial performance in small-sized and medium-sized firms. *Journal of Business Research*, 74, 55-65.
- Tether, B. S. & Tajar, A. (2008). Beyond industry-university links: sourcing knowledge for innovation from consultants, private research organisations and the public science-base. *Research Policy*, 37, 1079-1095.

- Thakur, R. & Hale, D. (2013). Service innovation: A comparative study of US and Indian service firms. *Journal of Business Research*, 66, 1108-1128.
- Thornhill, S. & Amit, R. (2003). Learning about Failure: Bankruptcy, Firm Age and the Resource-based View. *Organization Science*, 14, 497-509.
- Trevor, C. O. (2001). Interactions among actual ease-of-movement determinants and job satisfaction in the prediction of voluntary turnover. *Academy of Management Journal*, 44, 621-638.
- Tsai, K.-H. (2009). Collaborative networks and product innovation performance: Toward a contingency perspective. *Research Policy*, 38, 765-778.
- Ugur, M., Trushin, E. & Solomon, E. (2016). Inverted-U relationship between R&D intensity and survival: evidence on scale and complementarity effects in UK data. *Research Policy*, 45, 1474-1492.
- Un, C. A. & Asakawa, K. (2015). Types of R&D Collaborations and Process Innovation: The Benefit of Collaborating Upstream in the Knowledge Chain. *Journal of Product Innovation Management*, 32, 138-153.
- van Beers, C. & Zand, F. (2014). R&D Cooperation, Partner Diversity, and Innovation Performance: An Empirical Analysis. *Journal of Product Innovation Management*, 31, 292-312.
- Velu, C. (2015). Business model innovation and third-party alliance on the survival of new firms. *Technovation*, 35, 1-11.

- Vogel, J. (2013). The two faces of R&D and Human Capital: Evidence from Western European Regions. *Papers in Regional Science*, 94, 525-551.
- von Hippel, E. (2005). *Democratizing innovation*. Cambridge, MA: MIT Press,
- Walsh, J. P., Lee, Y.-N. & Nagaoka, S. (2016). Openness and innovation in the US: Collaboration form, idea generation and implementation. *Research Policy*, 45, 1660-1671.
- Wu, L.-Y. (2010). Applicability of the resource-based and dynamic-capability views under environmental volatility. *Journal of Business Research*, 63, 27-31.
- Zahra, S. A. & George, G. (2002). Absorptive capacity: a review, re-conceptualization, and extension. *Academy of Management Review*, 27, 185-203.
- Zouaghi, F., Sánchez, M. & García Martínez, M. (2018). Did the global financial crisis impact firms' innovation performance? The role of internal and external knowledge capabilities in high and low tech industries. *Technological Forecasting and Social Change*, 132, 92-104.



**Table 1. Summary Statistics of the whole sample**

	All firms	Fail=1	Fail=0	<i>p-value</i>	Recesion=1	Recesion=0	<i>p-value</i>
R&D intensity	0.07 ( 0.31 )	0.10 (0.42)	0.07 (0.32)	0.000	0.07 (0.31)	0.06 (0.27)	0.000
R&D human capital	38.05 (44.53)	25.56 (40.79)	39.67 (44.74)	0.000	37.09 (44.32)	37.94 (44.63)	0.048
Vertical partners	0.75 ( 0.90 )	0.56 (0.83)	0.78 (0.91)	0.000	0.74 (0.90)	0.75 (0.93)	0.106
Horizontal partners	0.25 ( 0.69)	0.16 (0.55)	0.26 (0.70)	0.000	0.24 (0.69)	0.25 (0.71)	0.251
Competitors partners	0.09 (0.09)	0.07 (0.26)	0.09 (0.00)	0.012	0.08 (0.28)	0.09 (0.28)	0.474
Firm size	0.24 (0.43)	0.10 (0.30)	0.26 (0.00)	0.000	0.24 (0.43)	0.26 (0.43)	0.000
Productivity	11.71 (1.06)	11.26 (1.22)	11.74 (1.05)	0.000	11.69 (1.06)	11.76 (1.10)	0.000

Notes: The table presents sample means. Standard deviations are reported in parentheses. The p-value of a test of the equality of means is reported.

**Table 2. Descriptive statistics and correlation matrix**

	Mean	SD	Correlation Coefficients									
			1	2	3	4	5	6	7	8	9	
1. Business failure	0.06	0.23	1									
2. R&D intensity	0.07	0.31	0.02*	1								
3. R&D human capital	38.05	44.53	-0.05*	0.25*	1							
4. Vertical collaboration	0.75	0.90	-0.04*	0.14*	0.48*	1						
5. Horizontal collaboration	0.25	0.69	-0.02*	-0.19*	0.26*	0.26*	1					
6. Competitor collaboration	0.09	0.09	-0.01*	0.08*	0.21*	0.36*	0.19*	1				
7. Financial crisis	0.71	0.45	0.01	0.01*	-0.01*	-0.01	-0.01	-0.01	1			
8. Firm size	0.24	0.43	-0.08*	-0.10*	-0.05*	-0.04	-0.01*	-0.02*	-0.02*	1		
9. Productivity	11.71	1.06	-0.08*	-0.20*	0.11*	0.12*	0.38*	0.04*	-0.03*	0.04*	1	

\*p < 0.01; S.D = standard deviation

**Table 3. Hazard rate model for manufacturing firm (Weighted results)**

	M1	M2	M3	M4	M5	M6
	Haz.ratio	Haz.ratio	Haz.ratio	Haz.ratio	Haz.ratio	Haz.ratio
Financial crisis	3.06(0.47)***	3.11(0.48)***	3.41(0.62)***	3.65(0.66)***	2.99(0.46)***	3.25(0.53)***
R&D intensity	1.28(0.12)***	1.87(0.55)**	1.29(0.12)***	1.29(0.12)***	1.28(0.12)***	1.29(0.12)***
R&D human capital	0.99(0.00)***	0.99(0.00)***	0.99(0.00)***	0.99(0.00)***	0.99(0.00)***	0.99(0.00)***
Vertical collaboration	0.82(0.04)***	0.82(0.04)***	0.82(0.04)***	1.02(0.10)***	0.82(0.04)***	0.82(0.04)***
Horizontal collaboration	0.84(0.06)**	0.84(0.06)**	0.84(0.04)**	0.84(0.06)**	0.82(0.04)**	0.82(0.04)**
Competitor collaboration	1.38(0.18)**	1.38(0.18)**	1.38(0.19)**	1.38(0.19)**	1.38(0.19)**	2.24(0.65)**
Firm size	0.37(0.05)***	0.37(0.05)***	0.37(0.05)***	0.37(0.05)***	0.37(0.05)***	0.37(0.05)***
Labour productivity	0.54(0.02)***	0.54(0.02)***	0.54(0.02)***	0.54(0.02)***	0.54(0.02)***	0.54(0.02)***
Medium high-tech	1.30(0.17)*	1.30(0.17)*	1.30(0.17)*	1.30(0.17)*	1.30(0.17)*	1.30(0.17)*
Medium low-tech	1.31(0.16)**	1.31(0.16)**	1.31(0.16)**	1.31(0.16)**	1.31(0.16)**	1.31(0.16)**
Low-tech	1.74(0.23)***	1.74(0.24)***	1.74(0.24)***	1.74(0.24)***	1.74(0.24)***	1.74(0.24)***
<b>Interaction terms</b>						
R&D intensity*Financial crisis		0.68(0.21)				
R&D human capital*Financial crisis			0.99(0.02)			
Vertical collaboration*Financial crisis				0.76(0.08)**		
Horizontal collaboration*Financial crisis					1.20(0.24)	
Competitor collaboration*Financial crisis						0.56(0.18)*
Vif	1.55	2.10	2	1.94	1.81	1.84
Observations	27,404	27,404	27,404	27,404	27,404	27,404
Log likelihood	-3727.65	-3727.17	-3726.31	-3724.22	-3727.11	-3726.01

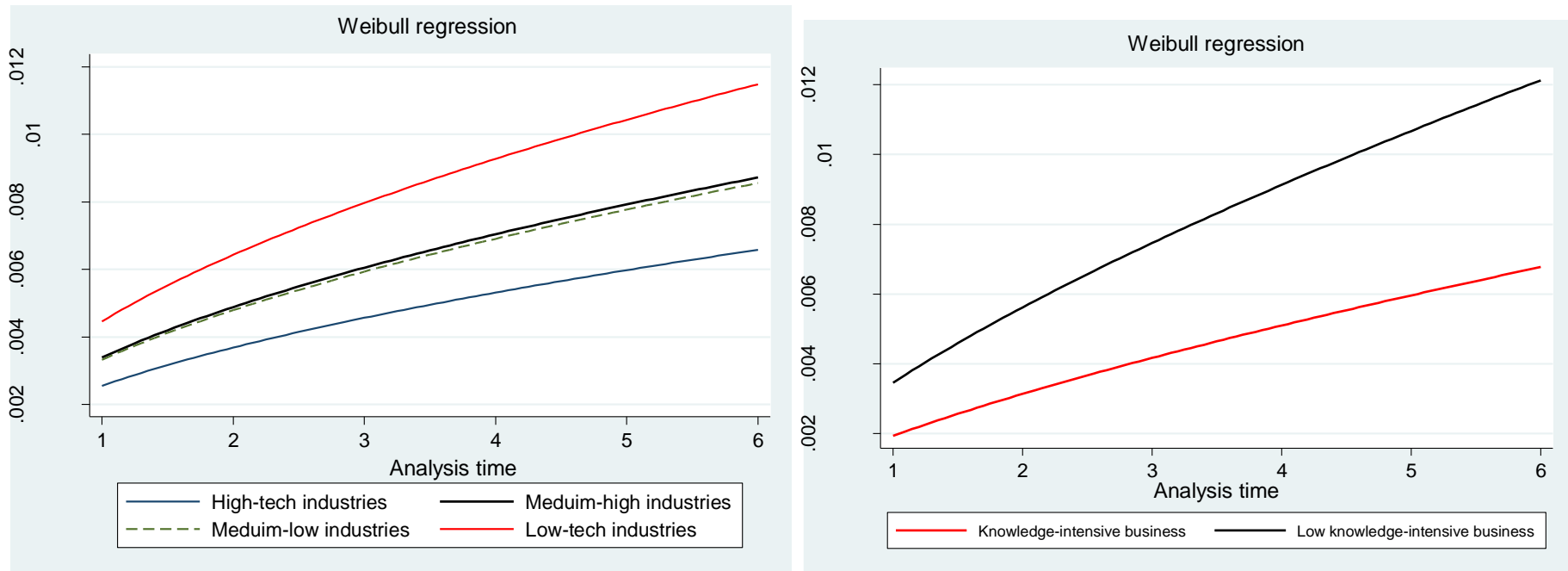
Note: Standard errors give inside parentheses; Vif= Variance Inflation Factor; \*Significance at 1%;\*\*significance at 5%;\*\*\*significance at 10%.

**Table 4. Hazard rate model for service firm failure (Weighted results)**

	M1	M2	M3	M4	M5	M6
	Haz.ratio	Haz.ratio	Haz.ratio	Haz.ratio	Haz.ratio	Haz.ratio
Financial crisis	1.81(0.31)***	1.86(0.33)***	2.07(0.41)***	2.21(0.47)***	1.79(0.32)***	1.91(0.33)***
R&D intensity	1.16(0.09)**	1.31(0.15)**	1.16(0.09)**	1.16(0.09)**	1.16(0.09)**	1.16(0.09)**
R&D human capital	0.98(0.00)***	0.98(0.00)***	0.98(0.00)***	0.98(0.00)***	0.98(0.00)***	0.98(0.00)***
Vertical collaboration	0.98(0.07)	0.98(0.07)	0.98(0.07)	1.24(0.13)**	0.98(0.07)**	0.98(0.07)**
Horizontal collaboration	0.88(0.06)*	0.88(0.06)*	0.88(0.06)*	0.88(0.06)*	0.88(0.06)*	0.88(0.06)*
Competitor collaboration	1.26(0.22)	1.26(0.22)	1.26(0.22)	1.24(0.22)	1.26(0.22)	2.02(0.58)
Firm size	0.27(0.3)***	0.27(0.3)***	0.27(0.3)***	0.27(0.3)***	0.27(0.3)***	0.27(0.02)***
Labour productivity	0.75(0.03)***	0.75(0.03)***	0.75(0.03)***	0.75(0.03)***	0.75(0.03)***	0.75(0.03)***
Low knowledge-intensive	1.79(0.29)***	1.79(0.29)***	1.79(0.29)***	1.79(0.29)***	1.79(0.29)***	1.79(0.29)***
<b>Interaction terms</b>						
R&D intensity*Financial crisis		0.85(0.12)				
R&D human capital*Financial crisis			0.99(0.00)**			
Vertical collaboration*Financial crisis				0.74(0.09)***		
Horizontal collaboration*Financial crisis					1.04(0.17)	
Competitor collaboration*Financial crisis						0.53(0.18)*
Vif	1.47	1.89	1.88	1.87	1.78	1.78
Observations	21,002	21,002	21,002	21,002	21,002	21,002
Log likelihood	-3499.15	-3498.47	-3496.53	-3494.41	-3499.11	-3497.05

Note: Standard errors give inside parentheses; Vif= Variance Inflation Factor; \*Significance at 1%; \*\*significance at 5%; \*\*\*significance at 10

Figure 1. Hazard functions: (a) manufacturing firms and (b) service firms, 2009-2015



**Appendix 1 - Table A.1. Variables Description**

<b>Variables</b>	<b>Definitions</b>
<b>Dependent Variables</b>	
Business Failure	Year of firm exit due to closure
<b>Predictor Variables</b>	
R&D intensity	R&D expenditure as a proportion of firm total sales
R&D Human capital	Percentage of R&D top skilled workers
Vertical collaboration	The intensity of external knowledge search with vertical partners (customers and suppliers)
Horizontal collaboration	The intensity of external knowledge search with horizontal partners (universities, intermediaries, government agencies and firms in other industries)
Competitor collaboration	The intensity of external knowledge search with competitors
Financial crisis	Takes the value 1 if the observation corresponds to the period of crisis 2009-2013; 0 if the period is 2014-15.
<b>Control variables</b>	
Firm size	Dummy variable that take value 1 if the number of employees equal to or greater than 200, and 0 otherwise
Labour productivity	Ln (ratio of firm sales to the total firm employees)
Sector dummy	Dummy variables indicating the sector where the firm operates