

Kent Academic Repository

Full text document (pdf)

Citation for published version

Wheeler, Brandon C. (2010) Community ecology of the Middle Miocene primates of La Venta, Colombia: the relationship between ecological diversity, divergence time, and phylogenetic richness. *Primates*, 51 (2). pp. 131-138. ISSN 0032-8332.

DOI

<https://doi.org/10.1007/s10329-009-0181-y>

Link to record in KAR

<http://kar.kent.ac.uk/54729/>

Document Version

Author's Accepted Manuscript

Copyright & reuse

Content in the Kent Academic Repository is made available for research purposes. Unless otherwise stated all content is protected by copyright and in the absence of an open licence (eg Creative Commons), permissions for further reuse of content should be sought from the publisher, author or other copyright holder.

Versions of research

The version in the Kent Academic Repository may differ from the final published version.

Users are advised to check <http://kar.kent.ac.uk> for the status of the paper. **Users should always cite the published version of record.**

Enquiries

For any further enquiries regarding the licence status of this document, please contact:

researchsupport@kent.ac.uk

If you believe this document infringes copyright then please contact the KAR admin team with the take-down information provided at <http://kar.kent.ac.uk/contact.html>

1 Community Ecology of the Middle Miocene Primates of La Venta,
2 Colombia: the Relationship between Ecological Diversity, Divergence
3 Time, and Phylogenetic Richness

4
5 The final publication is available at Springer via <http://dx.doi.org/10.1007/s10764-010-9419-1>
6
7

8 Brandon C. Wheeler

9 Interdepartmental Doctoral Program in Anthropological Sciences

10 Stony Brook University

11 Stony Brook, NY 11794-4364 USA

12 Phone: 1-631-675-6412

13 Fax: 1-631-632-9165

14 E-mail: bcwheeler43@gmail.com

15

16

17 Size of the manuscript:

18 Word count (whole file): 4,622

19 Word count abstract: 229

20 3 tables & 8 figures

21

22 Originally submitted to *Primates* on July 15, 2009

23 Revision submitted on November 26, 2009

24

25

26

27 **Abstract**

28 It has been suggested that the degree of ecological diversity that characterizes a primate
29 community correlates positively with both its phylogenetic richness
30 and the time since the members of that community diverged (Fleagle and Reed 1999). It is
31 therefore questionable whether or not a community with a relatively recent divergence time
32 but high phylogenetic richness would be as ecologically variable as a community with
33 similar phylogenetic richness but a more distant divergence time. To address this question,
34 the ecological diversity of a fossil primate community from La Venta, Colombia, a Middle
35 Miocene platyrrhine community with phylogenetic diversity comparable to extant
36 platyrrhine communities but a relatively short time since divergence, was compared with
37 that of modern neotropical primate communities. Shearing quotients and molar lengths,
38 which together are reliable indicators of diet, for both fossil and extant species were plotted
39 against each other to describe the dietary “ecospace” occupied by each community.
40 Community diversity was calculated as the area of the minimum convex polygon
41 encompassing all community members. The diversity of the fossil community was then
42 compared to that of extant communities to test if the fossil community was less diverse
43 than extant communities while taking phylogenetic richness into account. Results indicate
44 that the La Ventan community was not significantly less ecologically diverse than modern
45 communities, supporting the idea that ecological diversification occurred along with
46 phylogenetic diversification early in platyrrhine evolution.

47

48 Key words: New World monkeys; Ecospace; Primate communities; Dietary diversity;
49 Primate evolution

50

51 **Introduction**

52

53 Studies of primate communities over the past decade have used multivariate “ecospace”
54 to describe the ecological diversity that characterizes a given community (e.g., Fleagle and Reed
55 1996; Godfrey et al. 1997; Gilbert 2005; see also Novack-Gottshall 2007). A community’s
56 ecospace can be defined as the space it takes up on multivariate axes which represent a variety of
57 ecological variables (including diet, locomotor and positional behavior, activity pattern, and
58 body size) and describe the niche of each species present in the community (see Fleagle and
59 Reed 1996). Such analyses have demonstrated a positive relationship between the ecological
60 diversity of a primate community and the degree of phylogenetic richness in that community
61 (Fleagle and Reed 1999). Similarly, primate communities whose members share a more ancient
62 common ancestor tend to be more diverse than those communities whose members share a more
63 recent ancestor (Fleagle and Reed 1999). Specifically, Neotropical primate communities, whose
64 members diverged relatively recently (20 Ma) (Hodgson et al. 2009), are much less ecologically
65 diverse than Old World primate communities (Fleagle and Reed 1999), whose members share a
66 more ancient common ancestor (80-90 Ma for African and Asian communities: Eizirik et al.
67 2004; 40 to 65 Ma for the Malagasy communities: Yoder and Yang 2004).

68 To date, studies correlating ecological diversity in primate communities with either
69 phylogenetic diversity or time since divergence have not compared the ecological variation of
70 fossil primate communities with that of living communities. Such a comparison is especially apt
71 when examining the affect divergence time has on platyrrhine communities because there is little
72 variation in average time since divergence among most New World primate communities due to
73 the fact that most modern subfamilies appeared relatively early in platyrrhine evolution

74 (Rosenberger et al. 2009). The fossil community from La Venta, **Colombia** (see Fleagle et al.
75 1997) demonstrates a degree of phylogenetic richness (i.e., number of taxa) comparable to
76 modern communities (Rosenberger et al. 2009), with many taxa attributable to extant subfamilies
77 (Fig. 1), yet with a time since divergence roughly one third that of modern platyrrhines. The
78 positive relationship between ecological diversity and divergence time of primate communities
79 (Fleagle and Reed 1999) predicts that the fossil primate community at La Venta would be less
80 ecologically diverse than modern platyrrhine communities. However, because the phylogenetic
81 richness of the primate community from La Venta is comparable to many modern platyrrhine
82 communities, it is questionable whether the degree of diversity of the La Ventan primates would
83 be less than that of modern primate communities with a similar degree of phylogenetic diversity,
84 despite their shorter divergence time.

85 This study addresses this question by first examining how phylogenetic richness affects
86 ecological diversity (as determined by variation in dental measurements related to diet and body
87 size) in modern neotropical communities. The degree of ecological diversity of the La Ventan
88 fauna is then compared to that of the modern communities while taking the number of taxa
89 present in the community into account. It was predicted that modern communities with greater
90 phylogenetic richness would be more ecologically variable than less rich communities, and that
91 the La Ventan community would be less ecologically diverse than modern communities given its
92 degree of phylogenetic richness. This comparison of the La Ventan fossil community to modern
93 communities provides insight into whether ecological diversity has remained relatively static
94 since the divergence of the major extant platyrrhine clades, or if ecological diversity continued to
95 increase even after the initial adaptive radiation.

96

Methods

97

98

99

100

101

102

103

104

105

106

107

108

109

110

111

112

113

114

115

116

117

118

119

120

Diversity in the dietary ecology of the Middle Miocene fossil primate community at La Venta (see Kay and Madden 1997 for details regarding the paleoecology of La Venta) is here compared to that of nine modern neotropical primate communities (fig. 2, table 1). Extant communities were chosen such that a range of degrees phylogenetic diversity would be represented (see table 1 for a list of all species present at each site). The fossil community was limited to the **five primate** species associated with the La Ventan “Monkey Beds” sedimentary deposits (including ***Aotus dindensis***, *Cebupithecia sarmientoi*, *Mohanamico hershkovitzi*, *Neosaimiri fieldsi*, and *Stirtonia tatacoensis*) (Fleagle et al., 1997; Hartwig and Meldrum, 2002) **plus the one species found in deposits both above and below the Monkey Beds (*Patasola magdalenae*)**. *Micodon kiotensis* is also associated with the Monkey Beds but was not included as a member of the fossil community because the limited fossil remains of this genus do not allow for detailed analysis regarding its ecology (Rosenberger et al. 2009) and the specimens ascribed to this genus may actually be deciduous teeth of another La Ventan primate species such as *Neosaimiri* (Fleagle et al. 1997; Fleagle pers. comm.). The Monkey Beds date to slightly less than 13 Ma (Madden et al. 1997; **Flynn et al. 1997; but see Takemura et al. 1992 for slightly older dates for younger La Ventan deposits**) and are thought to represent a short enough period of time (approximately 15 ky; Kay and Madden 1997) that it is likely that the species found in this deposit co-existed.

Ecological diversity was determined through analysis of variation in shearing quotients (SQ) and length of the lower first molar (M_1), which respectively are indicative of diet (Kay 1975) and body size (Gingerich et al. 1982). Shearing quotients are a measure of the development of the molar shearing crests; low (negative) SQ values indicate rounded molar

121 cusps and are associated with largely frugivorous diets while high (positive) values indicate
122 high-crested molars and are associated with largely folivorous (at large body sizes) or
123 insectivorous (at small body sizes) diets (see Kay 1975; Ungar and Kay 1995). These
124 measurements have been published for both fossil and extant taxa (Anthony and Kay 1993;
125 Fleagle et al. 1997; Meldrum and Kay 1997; Currie Ketchum 2002) and are perhaps the only
126 diet-related variables that are measurable for all species concerned, given that some fossil taxa
127 are represented exclusively by dental remains. Measurements are species averages (see table 2
128 for values of all measurements used) and were not measured for the specific populations used in
129 this study.

130 The M₁ length and SQ for each species were plotted against each other on a bivariate plot
131 to determine the dietary “ecospace” occupied by each primate assemblage (fig. 3). Following
132 Fleagle and Reed (1996), ecological diversity for each community was calculated as the area of
133 the minimum convex polygon (MCP) that encompasses the position of all species of that
134 community on the bivariate plot. MCPs were made from bivariate scatter plots made in
135 Microsoft Excel. The scale of each plot was standardized (as in fig. 3) so that the MCP area for
136 each community was directly comparable to those of all other communities. MCP areas were
137 calculated by importing each plot into Adobe Illustrator 12.0, dividing each MCP into multiple
138 triangles, and summing the areas of all constituting triangles. One mm of M1 length was given a
139 value of 3.175 cm in Adobe Illustrator, while 10 SQ units were given a value of 2.25 cm

140 Phylogenetic diversity for each community was measured using three methods: 1) the
141 number of species, 2) the number of genera, and 3) the number of subfamilies which make up the
142 community. Traditional (conservative) species designations were used following Fleagle (1999).
143 Based on Schneider (in Schneider and Rosenberger 1996), the following five subfamilies of

144 extant platyrrhines were recognized for the current study: Callitrichinae, Aotinae, Cebinae,
145 Atelinae, and Pitheciinae. Some researchers break the Platyrrhini down into additional (smaller)
146 groups, but only these five subfamilies were used because they are now widely accepted as
147 natural groupings (reviewed in Rylands et al. 2000; Rylands and Mittermeier 2009). The **six**
148 **fossil taxa constituting the Miocene community** were considered to be stem or crown members
149 of these subfamilies (fig. 1). Based on Fleagle and Kay (1997), *Cebupithecia sarmientoi* is
150 placed within the Pitheciinae and *Patasola magdalenae* is placed with the Callitrichinae. Based
151 on Rosenberger et al. (2009), ***Aotus dindensis* is placed within the Aotinae**, *Neosaimiri fieldsi* is
152 placed within the Cebinae, *Stirtonia tatacoensis* is placed within the Atelinae, and *Mohanamico*
153 *hershkovitzi* is placed within the Callitrichinae. It should be noted that the status of *Mohanamico*
154 is disputed, with Kay (1990) arguing that it is likely a pithecine. However, whether one places
155 this species within the callitrichines or the pithecines does not affect the current analysis because
156 it does not change the number of species, genera, or subfamilies present in the Monkey Beds
157 community.

158

159 Statistical Analyses

160

161 To examine the relationship between phylogenetic and ecological diversity, a linear
162 regression was used to test if each of the three measures of phylogenetic richness (i.e., number of
163 species, genera, and subfamilies) was a significant predictor of ecological diversity in the extant
164 communities. The area of the MCP of the La Ventan community was then compared to that of
165 the extant communities, taking into account each measure of phylogenetic richness which was
166 significant in the regressions. This was tested by measuring the vertical distance to the regression

167 line (i.e., the residual) on the plot of MCP area against phylogenetic richness for each of the
168 extant communities (fig. 4); a positive value was given to those points above the regression line
169 and a negative value to those below. The La Ventan community was then superimposed on the
170 graph (based on its MCP area and phylogenetic richness) and its vertical distance from the
171 regression line was measured. A special case t-test for comparing a single specimen against a
172 sample (Sokal and Rohlf 1995) was then used to test if the residual of the La Ventan community
173 differed significantly from those of the extant communities. Such a method allows for a test of
174 whether or not the La Ventan community was less diverse while taking phylogenetic richness
175 into account. Linear regressions were conducted using SPSS 15.0. The special case t-tests were
176 conducted by hand.

177

178 **Results**

179

180 Among extant communities, ecological diversity (as measured by MCP area) varied
181 considerably (Table 3) and was positively associated with each measure of phylogenetic
182 richness. Each of the number of species ($n=9$, $R^2=0.537$, $p=0.025$; fig. 5), the number of genera
183 ($n=9$, $R^2=0.564$, $p=0.020$; fig. 6), and the number of subfamilies ($n=9$, $R^2=0.597$, $p=0.015$; fig. 7)
184 were significant predictors of the area of the MCPs. When the La Ventan community is
185 superimposed onto these plots, it consistently falls below the regression line (figs. 5-7).
186 However, the degree to which the La Ventan community falls below the regression line is not
187 significantly different from that of the extant communities, regardless of how phylogenetic
188 richness was measured (number of species: $t=-0.167$, $df=8$, $p>0.90$; number of genera: $t=-0.463$,
189 $df=8$, $p>0.90$; number of subfamilies: $t=-1.567$, $df=8$, $p>0.10$).

190

191 **Discussion**

192

193 As expected, the greatest diversity in dietary ecospace as measured by the area of the
194 MCP was found in communities with the greatest degree of phylogenetic richness. This
195 relationship held whether phylogenetic richness was defined as the number of species, number of
196 genera, or number of subfamilies present in a given community. Differences in ecological
197 diversity between the La Ventan fossil community and modern communities, however, were not
198 significant. It thus seems that much of the ecological diversity that characterizes extant
199 Neotropical primate communities occurred early in the adaptive radiation of modern platyrrhines
200 (i.e., from 20 to 13 Ma) and that phylogenetic richness explains the degree of ecological diversity
201 that characterizes platyrrhine communities to a greater extent than does the time elapsed since
202 the members of that community diverged (see Fleagle and Reed 1999).

203 Despite the lack of a significant difference, it appears that some expansion in dietary
204 ecospace has occurred among New World primates over the last 13 million years (fig. 8). This
205 increase is related to both greater diversity in M_1 lengths among extant platyrrhines and a slight
206 increase in SQs at both small and large body size, with the species of La Venta having lower SQs
207 than many of their extant relatives. This may be indicative of an increased reliance on insectivory
208 and folivory in some modern taxa relative to the species of the fossil community. However, Kay
209 and Ungar (1997) found that although SQs of some Miocene catarrhines were low relative to
210 their modern relatives, dental microwear indicated that the Miocene fauna were as folivorous as
211 modern catarrhines with relatively high SQs. The authors argued that this may be an example of
212 the “Red Queen effect” (see Van Valen 1973), in which these folivorous taxa became better
213 adapted to the niche they already occupied as a means to compete with other contemporaneous

214 folivores. It is possible that a similar phenomenon occurred in the course of platyrrhine
215 evolution; studies of microscopic dental wear in these fossil species would provide insight in this
216 regard. In addition to an increase in SQs, some of the expansion of ecospace that has taken place
217 over the last 13 million years is the result of a greater diversity of M₁ lengths among extant taxa
218 relative to the species of the La Ventan Monkey Beds. If relatively recent platyrrhine
219 communities, such as those which included *Protopithecus* and *Caipora*, were included among
220 modern communities, the dietary ecospace would be considerably larger, as these taxa are up to
221 twice the size of any modern New World primate (MacPhee and Horovitz 2002; Rosenberger et
222 al. 2009).

223 Finally, the lack of a significant difference between La Venta and the extant communities
224 may be due to a type II error. It is possible that if other fossil platyrrhine communities dating to
225 the Middle Miocene were available for examination, a significant difference in ecological
226 diversity between the extinct and extant communities could be found. However, because of the
227 dearth of known fossil platyrrhine communities, this is not possible to test. Results may also
228 change if additional discoveries increase the number of taxa known from the Monkey Beds or
229 what we know about the ecology of the taxa already described. Indeed, a number of additional
230 taxa, including *Lagonimico*, *Nuciraptor*, *Stirtonia victoriae* (Fleagle et al. 1997), and
231 *Miocallicebus* (Takai et al. 2001) have been found in other La Ventan deposits and may
232 eventually be known from the Monkey Beds, although their addition to the fossil community
233 would not necessarily change the results or conclusion of the current study. Among the species
234 known from other layers, lower dentition is available for three (*Lagonimico*, *Nuciraptor*,
235 *Stirtonia victoriae*; Fleagle et al., 1997; Meldrum & Kay 1997. While their addition would
236 indeed add somewhat to the fossil community's MCP area, this would also add to its

237 phylogenetic richness. Whether or not these species should be considered members of the fossil
238 community awaits further fossil discoveries.

239

240 **Acknowledgements**

241

242 Carolyn Currie Ketchum graciously sent me many of the dental measurements used in this study
243 prior to finishing her thesis, for which I am very much appreciative. Anthony Olejniczak
244 provided statistical advice. I also thank John Fleagle, Christopher Gilbert, Kristina Hogg, Bill
245 Jungers, and Biren Patel for helpful discussion. Pablo Stevenson provided sources for species
246 compositions of extant communities. John Fleagle and two anonymous reviewers provided
247 helpful comments on a previous version of this manuscript.

248

249 **References**

250

- 251 Anthony MRL, Kay RF (1993) Tooth form and diet in ateline and alouattine primates:
252 reflections on the comparative method. *Am J Sci* 293A:356-382.
- 253 Aquino R (1978) La fauna primatológica en áreas de Jenaro Herrera. Proyecto de Asentamiento
254 Rural Integral en Jenaro Herrera, Boletín Técnico 1:1-20
- 255 Currie Ketchum C (2002) Mandibular and dental measurements as predictors of diet in extant
256 and fossil platyrrhines. Master's Thesis, Arizona State University.
- 257 Eizirik E, Murphy WJ, Springer MS, O'Brien SJ (2004) Molecular phylogeny and dating of
258 early primate divergences. In: Ross CF, Kay RF (eds) *Anthropoid origins: new visions*.
259 Kluwer Academic, New York, pp 45-64

260 Fishkind AS, Sussman RW (1987) Preliminary survey of the primates of the Zona Protectora and
261 La Selva Biological Station, Northeast Costa Rica. *Primate Conserv* 8:63-66

262 Fleagle JG (1999) *Primate adaptation and evolution*. Academic Press, San Diego

263 Fleagle JG, Kay R (1997) Platyrrhines, catarrhines, and the fossil record. In: Kinzey WG (ed)
264 *New World primates: ecology, evolution and behavior*. Aldine de Gruyter, New York, pp
265 3–24

266 Fleagle JG, Kay RF, Anthony MRL (1997) Fossil New World monkeys. In: Kay RF, Madden
267 RH, Cifelli RL, Flynn JJ (eds) *Vertebrate paleontology in the Neotropics: the Miocene*
268 *fauna of La Venta, Colombia*. Smithsonian Institution Press, Washington, D.C., pp 473-
269 495

270 Fleagle JG, Reed KE (1996) Comparing primate communities: a multivariate approach. *J Hum*
271 *Evol* 30:489-510

272 Fleagle JG, Reed KE (1999) Phylogenetic and temporal perspectives on primate ecology. In:
273 Fleagle JG, Janson C, Reed KE (eds) *Primate communities*. Cambridge University Press,
274 New York, pp 92-115

275 Flynn J, Guerrero J, Swisher C (1997) Geochronology of the Honda Group. In: Kay RF, Madden
276 RH, Cifelli RL, Flynn JJ (eds) Vertebrate paleontology in the Neotropics: the Miocene
277 fauna of La Venta, Colombia. Smithsonian Institution Press, Washington, D.C., pp 44-59

278 Gilbert CC (2005) Dietary ecospace and the diversity of euprimates during the Early and Middle
279 Eocene. *Am J Phys Anth* 126:237-249

280 Gingerich PD, Smith BH, Rosenberg K (1982) Allometric scaling in the dentition of primates
281 and prediction of body weight from tooth size in fossils. *Am J Phys Anth* 58:81-100

282 Glanz WE (1990) Neotropical mammal densities: how unusual is the community on Barro

283 Colorado Island, Panama. In: Gentry AH (ed) Four Neotropical Rainforests. Yale
284 University Press, New York, pp 287-313

285 Godfrey LR, Jungers WL, Reed KE, Simons EL, Chatrath PS (1997) Subfossil lemurs:
286 inferences about past and present primate communities in Madagascar. In: Goodman SM,
287 Patterson BD (eds) Natural change and human impact in Madagascar. Smithsonian
288 Institution Press, Washington, pp 218-256

289 Green KM (1978) Primate censusing in northern Colombia: a comparison of two techniques.
290 *Primates* 19:537-550

291 Hartwig WC, Meldrum DJ (2002) Miocene platyrrhines of the northern Neotropics. In: Hartwig
292 WC (ed) The primate fossil record. Cambridge University Press, Cambridge, pp 175–188

293 Hodgson JA, Sterner KN, Matthews LJ, Burrell AS, Jani RA, Raaum RL, Stewart CB, Disotell
294 TR (2009) Successive radiations, not stasis, in the South American primate fauna. *Proc*
295 *Natl Acad Sci* 106:5534-5539

296 Johns AD (1986) Effects of habitat disturbance on rainforest wildlife in Brazilian Amazonia.
297 World Wildlife Fund, Washington

298 Kay RF (1975) The functional adaptations of primate molar teeth. *Am J Phys Anth* 42:195-215

299 Kay RF (1990) The phyletic relationships of extant and fossil Pitheciinae (Platyrrhini,
300 Anthropoidea). *J Hum Evol* 19:175-208

301 Kay RF, Madden RH (1997) Paleogeography and paleoecology. In: Kay RF, Madden RH, Cifelli
302 RL, Flynn JJ (eds) Vertebrate paleontology in the Neotropics: the Miocene fauna of La
303 Venta, Colombia. Smithsonian Institution Press, Washington, D.C., pp 520-550.

304 Kay RF, Ungar P (1997) Dental evidence for diet in some Miocene catarrhines with comments
305 on the effects of phylogeny on the interpretation of adaptation. In: Begun DR, Ward CV,

306 Rose MD (eds) Function, phylogeny, and fossils: Miocene hominoid evolution and
307 adaptations. Plenum Press, New York, pp 131-151

308 MacPhee RDE, Horovitz I (2002) Extinct Quaternary platyrrhines of the Greater Antilles and
309 Brazil. In: Hartwig WC (ed) The primate fossil record. Cambridge University Press,
310 Cambridge, pp 189-200

311 Madden R, Guerrero J, Kay R, Flynn J, Swisher C, Walton A (1997) The La Ventan stage and
312 age. In: Kay RF, Madden RH, Cifelli RL, Flynn JJ (eds) Vertebrate paleontology in the
313 Neotropics: the Miocene fauna of La Venta, Colombia. Smithsonian Institution Press,
314 Washington, D.C., pp 499-519

315 Meldrum D, Kay R (1997) Postcranial skeletons of La Ventan platyrrhines. In: Kay RF, Madden
316 RH, Cifelli RL, Flynn JJ (eds) Vertebrate paleontology in the Neotropics: the Miocene
317 fauna of La Venta, Colombia. Smithsonian Institution Press, Washington, D.C., pp 459-
318 472

319 Mendes Pontes AR (1999) Environmental determinants of primate abundance in Maracá island,
320 Roraima, Brazilian Amazonia. *J Zool* 247:189-199

321 Novack-Gottshall PM (2007) Using a theoretical ecospace to quantify the ecological diversity of
322 Paleozoic and modern marine biotas. *Paleobiology* 33:273-294

323 Rosenberger AL, Tejedor MF, Cooke SB, Pekar S (2009) Platyrrhine ecomorphology in space
324 and time. In: Garber PA, Estrada A, Bicca-Marques JC, Heymann EW, Strier KB (eds)
325 South American primates: comparative perspectives in the study of behavior, ecology,
326 and conservation. Springer, New York, pp 69-113

327 Rylands AB, Mittermeier RA (2009) The diversity of the New World primates (Platyrrhini): an
328 annotated taxonomy. In: Garber PA, Estrada A, Bicca-Marques JC, Heymann EW, Strier

329 KB (eds) South American primates: comparative perspectives in the study of behavior,
330 ecology, and conservation. Springer, New York, pp 23-54

331 Rylands AB, Schneider H, Langguth A, Mittermeier RA, Groves CP, Rodríguez-Luna E (2000)
332 An assessment of the diversity of New World primates. *Neotropical Primates* 8:61-93

333 Schneider H, Rosenberger AL (1996) Molecules, morphology, and platyrrhine systematics. In:
334 Norconk MA, Rosenberger AL, Garber PA (eds) Adaptive radiations of Neotropical
335 primates. Plenum Press, New York, pp 3-19

336 Sokal RR, Rohlf FJ (1995) Biometry: the principles and practice of statistics in biological
337 research. W. H. Freeman and Co, New York

338 Stevenson PR (1996) Censos diurnos de mamíferos y algunas aves de gran tamaño en el Parque
339 Nacional Tinigua, Colombia. *Universitas Scientiarum* 3:67-81

340 Takai M, Anaya F, Suzuki H, Shigehara N, Setoguchi T (2001) A new platyrrhine from the
341 middle Miocene of La Venta, Colombia, and the phyletic position of Callicebinae.
342 109:289-308

343 Takemura A, Takai M, Danhara T, Setoguchi T (1992) Fission-track ages of the Villavieja
344 Formation of the Miocene Honda Group in La Venta, Department of Huila, Colombia.
345 8:19-27

346 Ungar PS, Kay RF (1995) The dietary adaptations of European Miocene catarrhines. *Proc Natl*
347 *Acad Sci* 92:5479-5481

348 Van Valen L (1973) A new evolutionary law. *Evol Theory* 1:1-30

349 Yoder A, Yang Z (2004) Divergence dates for Malagasy lemurs estimated from multiple gene
350 loci: geological and evolutionary context. 13:757-773

351

352

353 Table 1. The species present in each of the extant communities examined in this study.

| subfamily | species | site | | | | | | | | |
|----------------|------------------------------|------|---|---|---|---|---|---|---|---|
| | | 1 | 2 | 3 | 4 | 5 | 6 | 7 | 8 | 9 |
| Pitheciinae | <i>Cacajao calvus</i> | | | | | | | | x | |
| | <i>Callicebus cupreus</i> | | | | | | | | | x |
| | <i>Callicebus moloch</i> | | | | | | | x | x | |
| | <i>Chiropotes satanas</i> | | | | x | | x | | | |
| | <i>Pithecia monachus</i> | | | | | | | | | x |
| | <i>Pithecia pithecia</i> | | | | x | | | | | |
| Atelinae | <i>Alouatta belzebul</i> | | | | | | | x | | |
| | <i>Alouatta palliata</i> | x | x | | | | | | | |
| | <i>Alouatta seniculus</i> | | | x | x | x | | x | | x |
| | <i>Ateles belzebuth</i> | | | x | | x | | | | x |
| | <i>Ateles geoffroyi</i> | x | x | | | | | | | |
| | <i>Ateles paniscus</i> | | | | x | | | x | | |
| | <i>Lagothrix lagothricha</i> | | | | | | | | x | x |
| Cebinae | <i>Cebus albifrons</i> | | | x | | | | x | x | |
| | <i>Cebus apella</i> | | | | x | x | x | x | | x |
| | <i>Cebus capucinus</i> | x | x | | | | | | | |
| | <i>Cebus olivaceus</i> | | | | | x | | | | |
| | <i>Saimiri sciureus</i> | | | | x | x | x | x | x | x |
| Aotinae | <i>Aotus azarae</i> | | | | | | | | | |
| | <i>Aotus trivirgatus</i> | | x | | | | | x | | x |
| Callitrichinae | <i>Cebuella pygmaea</i> | | | | | | | | x | |
| | <i>Saguinus fuscicollis</i> | | | | | | | x | x | |
| | <i>Saguinus geoffroyi</i> | | x | | | | | | | |
| | <i>Saguinus imperator</i> | | | | | | | x | | |
| | <i>Saguinus leucopus</i> | | | x | | | | | | |
| | <i>Saguinus midas</i> | | | | x | | x | | | |
| | <i>Saguinus mystax</i> | | | | | | | | x | |

354 1. La Selva, Costa Rica: Fishkind & Sussman 1987; 2. Barro Colorado Island, Panama: Glanz
355 1990; 3. Magdalena Valley, Colombia: Green 1978; 4. Raleighvallen, Suriname: Fleagle and
356 Reed 1996; 5. Maraca Island, Brazil: Mendes-Pontes 1999; 6. Pucurui River, Brazil: Johns 1986;
357 7. Cocha Cashu, Peru: Fleagle and Reed 1996; 8. Jenaro Herrera, Peru: Aquino 1978; 9. Tinigua,
358 Colombia: Stevenson 1996.

359

360 Table 2. Dental measurements used in this study.

| Species | M ₁ length (mm) | SQ* |
|---------------------------------------------|----------------------------------|-------|
| <i>Alouatta belzebul</i> ² | 7.3 | 11.5 |
| <i>Alouatta palliata</i> ¹ | 6.9 | 10.8 |
| <i>Alouatta seniculus</i> ² | 7.0 | 12.7 |
| <i>Aotus azarae</i> ² | 3.1 | 10.9 |
| <i>Aotus dindensis</i> | 3.2 | 4.7 |
| <i>Aotus trivirgatus</i> ¹ | 3.1 | 10.9 |
| <i>Ateles belzebuth</i> ² | 5.0 | -1.0 |
| <i>Ateles geoffroyi</i> ¹ | 5.3 | -2.5 |
| <i>Ateles paniscus</i> ² | 5.4 | -3.5 |
| <i>Cacajao calvus</i> ² | 4.3 | -17.2 |
| <i>Callicebus cupreus</i> ² | 3.2 | -4.9 |
| <i>Callicebus moloch</i> ¹ | 3.2 | -4.7 |
| <i>Cebuella pygmaea</i> ¹ | 1.8 | 0.9 |
| <i>Cebupithecia sarmientoi</i> ¹ | 3.5 | -19.4 |
| <i>Cebus albifrons</i> ² | 4.5 | -7.2 |
| <i>Cebus apella</i> ¹ | 4.8 | -11.3 |
| <i>Cebus capucinus</i> ² | 4.5 | -7.7 |
| <i>Cebus olivaceus</i> ² | 4.5 | -9.6 |
| <i>Chiropotes satanas</i> ¹ | 3.6 | -15.5 |
| <i>Lagothrix lagotricha</i> ¹ | 5.5 | 1.9 |
| <i>Mohanamico hershkovitzi</i> ¹ | 3.2 | -14.6 |
| <i>Neosaimiri fieldsi</i> ¹ | 2.9 | -10.3 |
| <i>Patasola magdalenae</i> ¹ | 2.5 | -7.0 |
| <i>Pithecia monachus</i> ¹ | 4.0 | -6.6 |
| <i>Pithecia pithecia</i> ² | 3.5 | -4.5 |
| <i>Saguinus fuscicollis</i> ² | 2.1 | -7.0 |
| <i>Saguinus geoffroyi</i> ¹ | 2.6 | -7.9 |
| <i>Saguinus imperator</i> ² | 2.5 | -11.0 |
| <i>Saguinus leucops</i> ² | 2.4 | -9.3 |
| <i>Saguinus midas</i> ² | 2.3 | -9.7 |
| <i>Saguinus mystax</i> ¹ | 2.5 | -11.9 |
| <i>Saimiri sciureus</i> ¹ | 2.9 | 6.4 |

361
 362 ¹ Data from Fleagle et al. (1997). ² Data from Currie Ketchum (2002). *Methods for calculating
 363 shearing quotients (SQs) described in Fleagle et al. (1997).

365 Table 3. Phylogenetic richness and minimum convex polygon (MCP) areas for each of the nine
 366 extant and one fossil community examined in this study.

| site | # species | # genera | # subfamilies | MCP area |
|----------------|-----------|----------|---------------|----------|
| La Selva | 3 | 3 | 2 | 0.54 |
| BCI* | 5 | 5 | 4 | 12.06 |
| Magdalena | 4 | 4 | 3 | 3.99 |
| Raleighvallen | 7 | 7 | 4 | 15.42 |
| Maraca Island | 5 | 4 | 2 | 9.34 |
| Pucurui River | 5 | 5 | 4 | 15.63 |
| Jenerro Herera | 9 | 8 | 5 | 12.02 |
| Cocha Cashu | 9 | 7 | 5 | 16.82 |
| Tiningua | 7 | 7 | 4 | 13.35 |
| La Venta | 6 | 6 | 5 | 10.36 |

367 * Barro Colorado Island

368 **Figure captions**

369

370 **Figure 1.** Cladistic relationships of the extant platyrrhine subfamilies (based on Hodgson et al.
371 2009) and the placement of La Ventan taxa within those subfamilies. **A= *Aotus dindensis***; C =
372 *Cebupithecia*; S = *Stirtonia*; N= *Neosaimiri*; M = *Mohanamico*; P = *Patasola*.

373

374 **Figure 2.** The location of La Venta and the nine extant communities examined in this study. 1.
375 La Selva, Costa Rica. 2. Barro Colorado Island, Panama. 3. Magdalena Valley, Colombia. 4.
376 Raleighvallen, Suriname. 5. Maraca Island, Brazil. 6. Pucurui River, Brazil. 7. Cocha Cashu,
377 Peru. 8. Jenaro Herrera, Peru. 9. Tinigua, Colombia.

378

379 **Figure 3.** An example of the method used to calculate ecological diversity for a given
380 community. This figure shows the shearing quotients (SQs) plotted against the lengths of the first
381 molars for the five species found in Barro Colorado, Panama. Ecological diversity was calculated
382 as the area of the minimum convex polygon encompassing all species of the community (see
383 Fleagle and Reed 1996).

384

385 **Figure 4.** An example of the method used to test for differences in ecological diversity between
386 the La Ventan fossil community and the extant communities. The diagonal line is the regression
387 line based on the equation that describes the relationship between the phylogenetic richness (i.e.,
388 the number of taxa) of the extant communities and the area their minimum convex polygons.
389 Vertical lines are the vertical distance (i.e., the residual) of each community from the regression

390 line. The fossil community is superimposed on the graph and is not included in the regression
391 equation.

392

393 **Figure 5.** The relationship between the number of species at a site and the area of the site's
394 minimum convex polygon. The La Ventan community is superimposed onto the graph.

395

396 **Figure 6.** The relationship between the number of genera at a site and the area of the site's
397 minimum convex polygon. The La Ventan community is superimposed onto the graph.

398

399 **Figure 7.** The relationship between the number of subfamilies at a site and the area of the site's
400 minimum convex polygon. The La Ventan community is superimposed onto the graph.

401

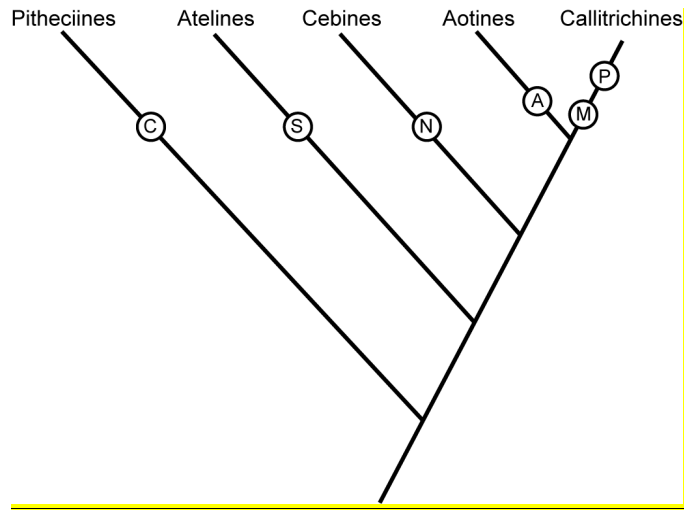
402 **Figure 8.** Scatter plot of shearing quotients (SQs) and M₁ lengths (a proxy for body size) for all
403 extant and fossil taxa included in the current study. Extant taxa show a greater degree of
404 variation in SQs at both small and large body size and slightly more variation in M₁ lengths. **A=**

405 ***Aotus dindensis***; C = *Cebupithecia*; S = *Stirtonia*; N= *Neosaimiri*; M = *Mohanamico*; P =
406 *Patasola*.

407

408

409 **Figure 1**



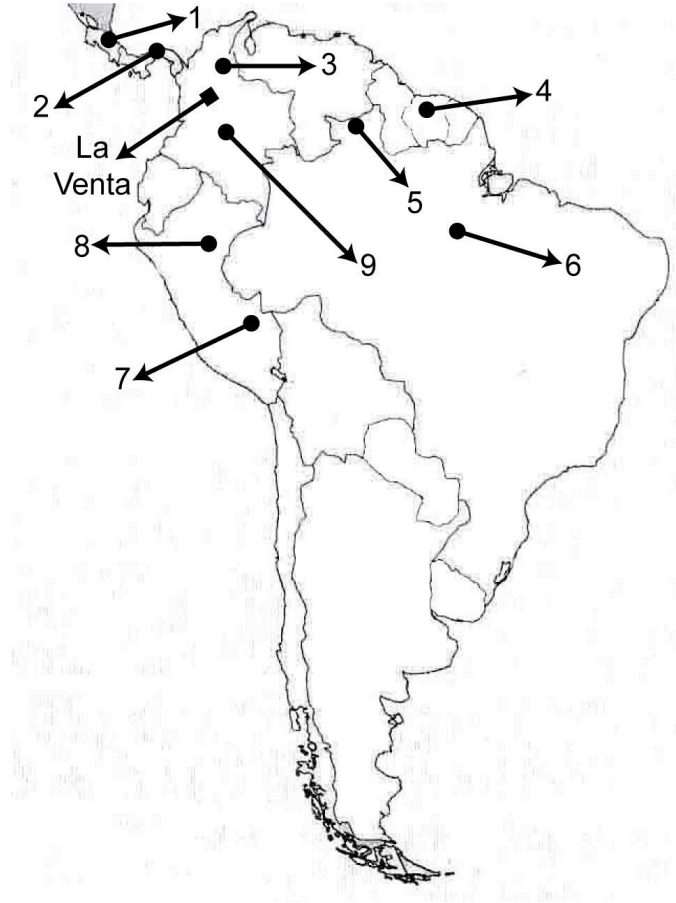
410

411

412

413

414 **Figure 2**



415

416

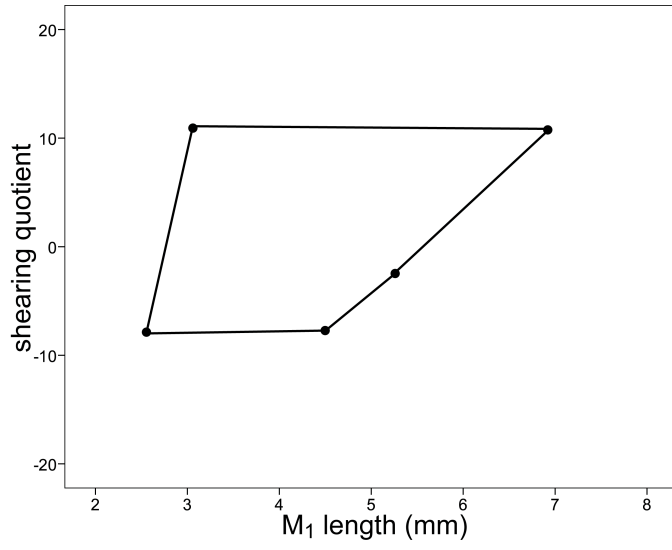
417

418

419

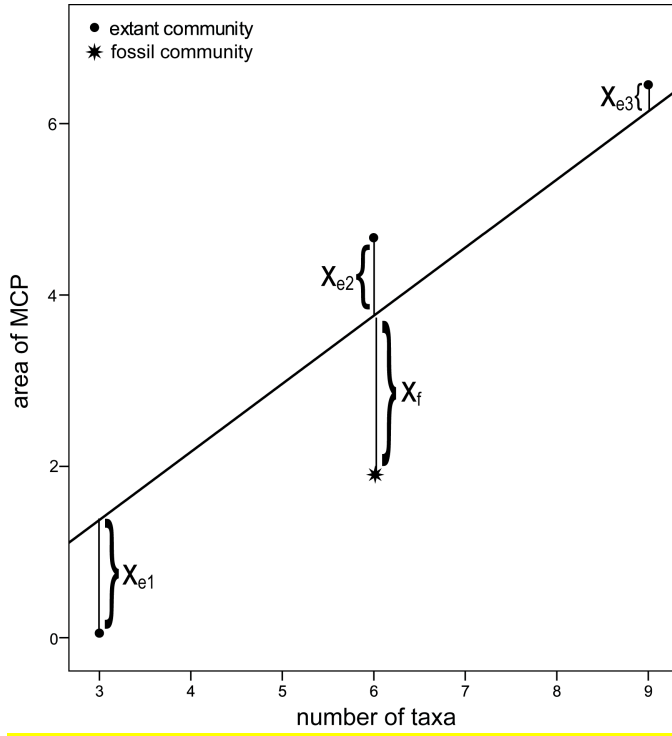
420

421 **Figure 3**



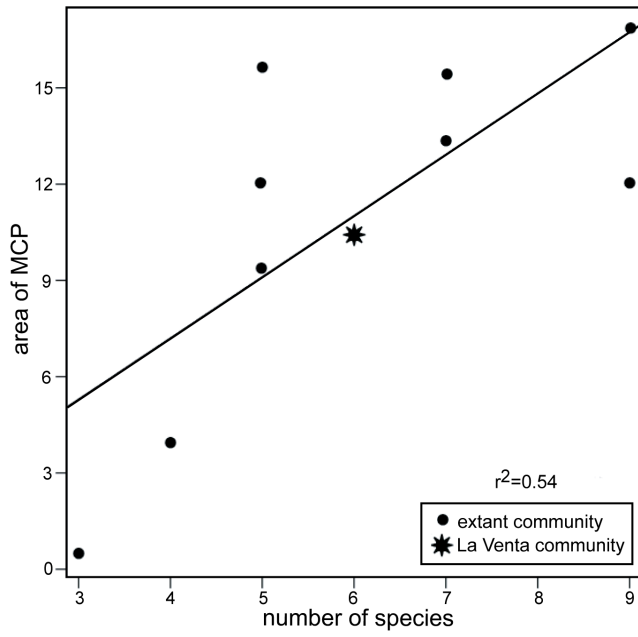
422
423

424 **Figure 4**
425



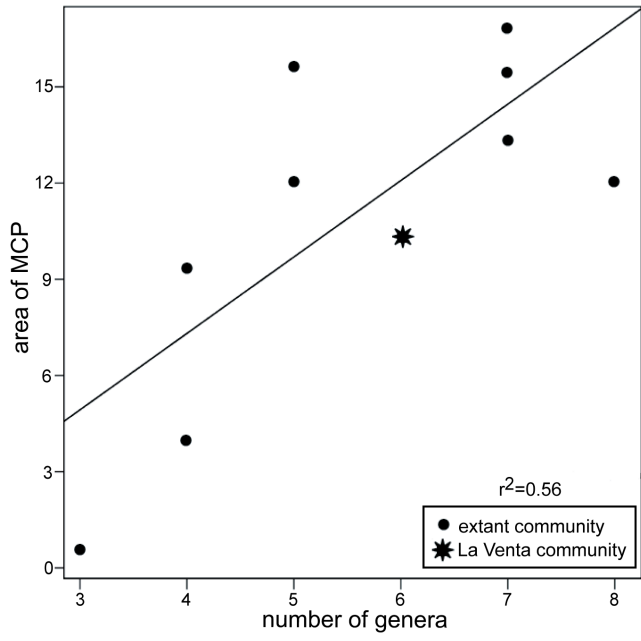
426
427
428

429 **Figure 5**
430



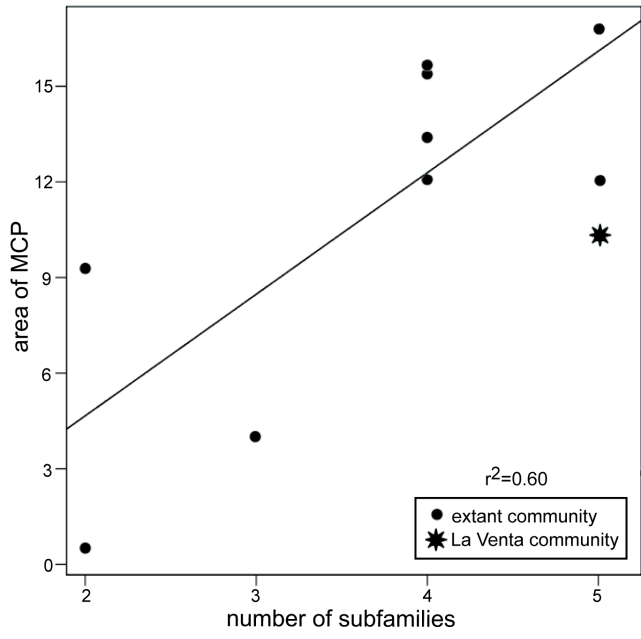
431
432
433
434
435
436

437 **Figure 6**
438



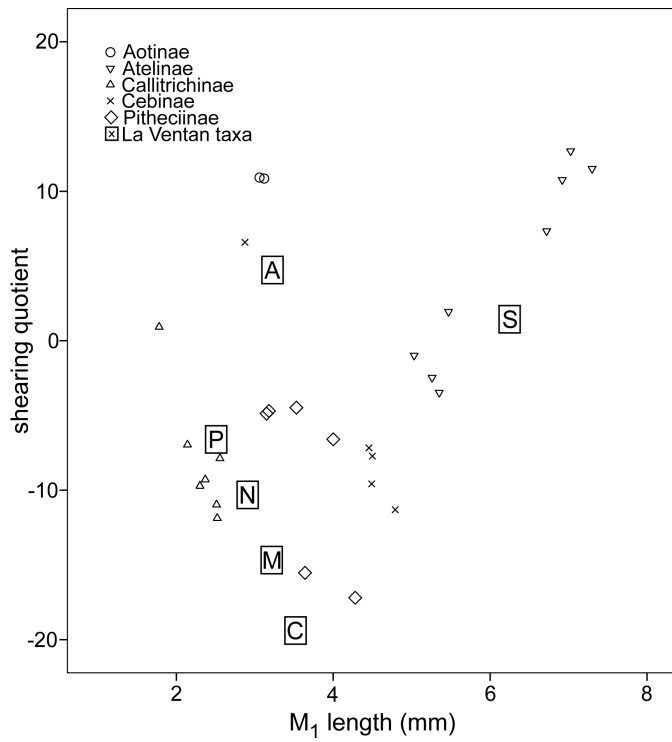
439
440
441
442
443
444

445 **Figure 7**
446



447
448
449
450

451 **Figure 8**
452



453
454
