

Kent Academic Repository

Full text document (pdf)

Citation for published version

Cane, James E. and O'Connor, Denise and Michie, Susan (2012) Validation of the theoretical domains framework for use in behaviour change and implementation research. *Implementation Science*, 7 (37). ISSN 1748-5908.

DOI

<https://doi.org/10.1186/1748-5908-7-37>

Link to record in KAR

<http://kar.kent.ac.uk/29458/>

Document Version

Author's Accepted Manuscript

Copyright & reuse

Content in the Kent Academic Repository is made available for research purposes. Unless otherwise stated all content is protected by copyright and in the absence of an open licence (eg Creative Commons), permissions for further reuse of content should be sought from the publisher, author or other copyright holder.

Versions of research

The version in the Kent Academic Repository may differ from the final published version.

Users are advised to check <http://kar.kent.ac.uk> for the status of the paper. **Users should always cite the published version of record.**

Enquiries

For any further enquiries regarding the licence status of this document, please contact:

researchsupport@kent.ac.uk

If you believe this document infringes copyright then please contact the KAR admin team with the take-down information provided at <http://kar.kent.ac.uk/contact.html>

This Provisional PDF corresponds to the article as it appeared upon acceptance. Fully formatted PDF and full text (HTML) versions will be made available soon.

Validation of the theoretical domains framework for use in behaviour change and implementation research

Implementation Science 2012, **7**:37 doi:10.1186/1748-5908-7-37

James Cane (j.e.cane@kent.ac.uk)
Denise O'Connor (denise.oconnor@monash.edu)
Susan Michie (s.michie@ucl.ac.uk)

ISSN 1748-5908

Article type Research

Submission date 1 September 2011

Acceptance date 24 April 2012

Publication date 24 April 2012

Article URL <http://www.implementationscience.com/content/7/1/37>

This peer-reviewed article was published immediately upon acceptance. It can be downloaded, printed and distributed freely for any purposes (see copyright notice below).

Articles in *Implementation Science* are listed in PubMed and archived at PubMed Central.

For information about publishing your research in *Implementation Science* or any BioMed Central journal, go to

<http://www.implementationscience.com/authors/instructions/>

For information about other BioMed Central publications go to

<http://www.biomedcentral.com/>

Validation of the theoretical domains framework for use in behaviour change and implementation research

James Cane¹

Email: j.e.cane@kent.ac.uk

Denise O'Connor²

Email: denise.oconnor@monash.edu

Susan Michie^{3*}

*Corresponding author

Email: s.michie@ucl.ac.uk

¹ School of Psychology, Keynes College, University of Kent, Canterbury, Kent CT2 7NP, UK

² School of Public Health and Preventive Medicine, Faculty of Medicine, Nursing and Health Sciences, Monash University, The Alfred Centre, 99 Commercial Road, Melbourne, VIC 3004, Australia

³ Research Department of Clinical, Centre for Outcomes Research and Effectiveness (CORE), Education and Health Psychology, University College London, 1-19 Torrington Place, London WC1E 7HB, UK

Abstract

Background

An integrative theoretical framework, developed for cross-disciplinary implementation and other behaviour change research, has been applied across a wide range of clinical situations. This study tests the validity of this framework.

Methods

Validity was investigated by behavioural experts sorting 112 unique theoretical constructs using closed and open sort tasks. The extent of replication was tested by Discriminant Content Validation and Fuzzy Cluster Analysis.

Results

There was good support for a refinement of the framework comprising 14 domains of theoretical constructs (average silhouette value 0.29): 'Knowledge', 'Skills', 'Social/Professional Role and Identity', 'Beliefs about Capabilities', 'Optimism', 'Beliefs about Consequences', 'Reinforcement', 'Intentions', 'Goals', 'Memory, Attention and

Decision Processes', 'Environmental Context and Resources', 'Social Influences', 'Emotions', and 'Behavioural Regulation'.

Conclusions

The refined Theoretical Domains Framework has a strengthened empirical base and provides a method for theoretically assessing implementation problems, as well as professional and other health-related behaviours as a basis for intervention development.

Keywords

Theoretical domains framework, Behaviour, Change, Implementation, Validation, Theory

Background

Behaviour change is key to improving healthcare and health outcomes. Behaviours may be those of healthcare workers, such as implementation of evidence-based practice, of patients, such as medication adherence, or of the general population, such as smoking cessation and increasing physical activity. Despite high-level recommendations to improve implementation of evidence-based practice [1,2] and a rapidly developing field of implementation science, implementation remains variable, with numerous organisational and individual factors influencing healthcare workers' behaviour. These factors include the availability of evidence, its relevance to practice, the dissemination of evidence and guidelines, individual motivation, the ability to keep up with current changes, clarity of roles and practice, and the culture of specific healthcare practices [3,4].

Improving implementation of evidence-based practice by healthcare workers depends on changing multiple behaviours of multiple types of people (*e.g.*, health professionals, managers, administrators) [5]. Changing behaviour is not easy, but is more effective if interventions are based on evidence-based principles of behaviour change [6]. These principles form part of many theories of behaviour change, but are seldom drawn on in designing and evaluating implementation interventions. There is some evidence that behaviour change interventions informed by theory are more effective than those that are not [7,8]. Designing interventions on the basis of practitioner or researcher intuition rather than theory precludes the possibility of understanding the behaviour change processes that underlie effective interventions and of applying this knowledge to inform the design of future interventions. This is also the case where theory is cited but poorly applied to intervention development [9].

In a review of 235 guideline development and implementation studies, only 22.5% were judged to have used theories of behaviour change, and 16.6% of studies using a single theory [10]. A further 4.3% used only selected constructs from theories; across the majority of studies there was no clear rationale for theory use. While use of a single theory may be appropriate and lends itself to theory testing, in many cases the selection has not been justified and the theory is not tested [9]. If theory selection is not informed by a comprehensive theoretical assessment of the implementation or other behavioural problem, there is a risk of missing relevant theoretical constructs or including irrelevant ones. A second problem in applying theory to intervention design stems from basing interventions on several

theories with overlapping theoretical constructs [11,12]. This makes it difficult to identify the specific processes underlying successful behaviour change.

To overcome such problems, an integrative framework of theories of behaviour change was developed by 18 psychological theorists in collaboration with 16 health service researchers and 30 health psychologists [13]. The aim of the Theoretical Domains Framework (TDF) was to simplify and integrate a plethora of behaviour change theories and make theory more accessible to, and usable by, other disciplines. The group identified 33 theories and 128 key theoretical constructs related to behaviour change and synthesised them into a single framework to assess implementation and other behavioural problems and inform intervention design. They used a six stage consensus approach: identifying theories and theoretical constructs relevant to behaviour change, where a theoretical construct was defined as ‘a concept specially devised to be part of a theory’ [13]; simplifying these resulting constructs into overarching theoretical domains, where a theoretical domain was defined as ‘a group of related theoretical constructs’ [13]; evaluating the importance of the theoretical domains; conducting an interdisciplinary evaluation and synthesis of the domains and constructs; validating the domain list; and piloting interview questions relevant to the constructs and domains. This resulted in 12 theoretical domains and exemplar questions for each to use in interviews or focus groups to provide a comprehensive theoretical assessment of implementation problems.

This framework has been used by research teams across several healthcare systems to explain implementation problems and inform implementation interventions. For example, in Australia it has been used to identify the barriers and enablers to the implementation of evidence-based guidelines for acute low back pain [14,15] and develop theory-informed behaviour change interventions [16]. In the UK, examples include studies of the barriers and levers related to hand hygiene [17]; the assessment of theoretical domains relevant to blood transfusion practice across different contexts including neonatal and adult intensive care units [18,19]; and identifying difficulties in implementing guidelines relating to schizophrenia [20]. In Denmark, it has been used to understand behaviour in the implementation of tobacco use prevention and counselling guidelines amongst dental providers [21]. Most of this research has used interviews and focus groups that are resource intensive; a questionnaire measure is currently being developed by the authors. This will facilitate research investigating prediction of implementation and other types of behaviour change.

This article is one in a series of articles documenting the development and use of the TDF to advance the science of implementation research. To inform future use of the TDF, we conducted the current study to provide a more thorough test of the validity of the framework than was carried out in the original research. The overall objective of the study was to examine the content validity of the TDF. Specifically, we wanted to confirm the optimal domain structure (number of domains), domain content (component constructs in each domain), and domain labels (most appropriate names that best reflected the content of the validated domain structure). Card sorting methodology was used to conduct the validation of the TDF in this study. By building on the validation process undertaken by Michie *et al.* [13] the present study aimed to improve the empirical basis of this framework.

Method

Design

The study used a cross-sectional design.

Participants

Eligible participants possessed a good understanding of behaviour change theory and were unaware of the original framework reported in Michie *et al.* [13]. Potentially eligible participants were identified by systematically searching five online electronic journal databases (Web of Science, PsychInfo, CINAHL Plus, Ingenta Connect, JStor) using terms 'behaviour change' AND 'theory' from 1990 to 2011, by sending email invitations through membership mailing lists for the European Health Psychology Society, the American Psychological Association Division of Health Psychology, the USA's National Institute of Health's Behaviour Change Consortium, the Midlands Health Psychology Network in the UK, and by searching through delegate lists from the 2008 to 2010 annual conferences of the UK Society for Behavioural Medicine and British Psychological Society's Division of Health Psychology. The contact details of all individuals identified as authors on papers identified through the electronic database searches were located via publically available sources (*e.g.*, searches of university and other organisation websites).

Of 101 individuals who asked for full information about the study, 61 expressed an interest in taking part and were sent links to one of the online tasks; 37 of these (61%) completed their assigned task. The majority were from the UK (16), with the remaining participants being from the Netherlands (8), USA (2), Ireland (2), Australia (2), Italy (2), Portugal (1), South Africa (1), Greece (1), Germany (1), and Switzerland (1). The 27 women and 10 men had a mean age of 36.54 years (range 22 to 62).

The sample size for the tasks was based on estimates of between six and 36 participants shown as sufficient for sort and cluster analysis tasks [22-28]. For content-validation tasks, such as those proposed in the closed sort task, two to 24 participants have been shown to be sufficient [29-32], with more than five participants reducing the influence of rater outliers [33].

Evaluating the framework

To evaluate the original framework, a three step method was used:

Step one: Identify the optimal number of domains by sort task methods.

Step two: Establish domain content by identifying the most suitable construct allocation to each of the domains.

Step three: Finalise domain labels by identifying the most appropriate labels for new domains (labels for domains that replicated the original ones were retained).

Sort task methodology

Two types of sort task were used: an open sort task and a closed sort task (see Figure 1). In the open sort task, participants were asked to sort constructs into groups of their choice and label these groups according to their content. The optimal grouping of constructs into domains was identified using Fuzzy Cluster analysis [34], whereby sorting patterns across individual participants could be aggregated into clusters. This cluster technique has the benefit over the more commonly used k-means and k-medoid cluster analysis, and other grouping methods, in that it allocates a membership value (in the form of a probability value) for each possible construct-cluster pairing rather than simply assigning a construct to a single cluster, thereby the membership of items to more than one group could be assessed. The results obtained from the open sort task and Fuzzy Cluster analysis were used to identify the optimal domain structure (step one), the content of new domains (step two), and the most appropriate domain labels, based on the group names given by participants (step three). In the closed sort task, participants were asked to sort constructs into the domains defined in the original framework and rate their confidence in their allocation of each construct to a domain. The extent to which participants believed each construct belonged to the original 12 domains was assessed by Discriminant Content Validation (DCV) methods. DCV methods are able to examine the confidence of relationship between a single item and a particular domain [35]. The results from the closed sort task were used to identify any domains containing constructs with high confidence ratings and good agreement between participants (step one), and the constructs allocated to these domains (step two). Both types of sort task informed step one because it was considered important to include domains that developed naturally from the construct groupings (as informed by the open sort task), and to include domains to which there was good agreement across participants in the confidence of construct allocation to these domains (as informed by the closed sort task). To achieve this, the open sort task results were used to identify the domains based on the clusters formed in the open sort task; the closed sort results were then used to identify any additional domains for which there was good agreement and confidence in assigning constructs to these domains.

Figure 1 Steps taken to validate the Theoretical Domains Framework

Materials

There were 112 unique constructs (see Additional file 1), after 12 duplicates from the original framework were removed (participants had the opportunity to sort each construct to multiple domains). Definitions for the domains and constructs were selected or constructed from dictionaries, (*e.g.*, American Psychological Association Dictionary of Psychology [36]), and internet sources (*e.g.*, www.oed.com). Each definition was evaluated by the authors of the original framework and definitions were agreed by consensus. The sort tasks were delivered via an online computer program with constructs displayed at the top of the computer screen. For the open sort task, 24 unlabelled boxes were displayed below the construct item window into which the participants could sort the constructs. Above each box a space was given so that labels and descriptions for each group created could be given. For the closed sort task, 12 labeled boxes were displayed, each described by a single domain label from the original framework. In both tasks, individual constructs could be assigned to multiple boxes and for every allocation a confidence rating was requested using a drop-down menu (from 1 – ‘not at all confident’ to 10 – ‘extremely confident’). Constructs were presented in random order that was determined by the online program for each participant. Definitions for each construct

(open and closed sort tasks) and domain (for closed sort task only) were available when the participant hovered over the word with their mouse. Participants were asked, through open-ended questions, to record the length of time they had been involved in using behaviour change theories, the context in which they used them (*e.g.*, teaching, research, etc.) and their expertise in behaviour change theory and in using behaviour change interventions (1 – ‘A great deal’, 2 – ‘quite a lot’, 3 – ‘some’, 4 – ‘a little’, 5 – ‘none’).

Procedure

Invitations were emailed to potentially eligible participants giving a brief overview of the study and inquiring as to their expertise. If they considered themselves to have expertise in behaviour change theory and reported not knowing about the original framework, they were invited to participate and emailed the relevant web link to the task they were allocated to. Eligible participants were alternately allocated to an open or closed sort task based on the order in which they contacted the researchers. To avoid contamination of results across tasks, each participant was allocated to, and completed, only the closed sort task or the open sort task. For both tasks, an information screen gave a brief background to the study and asked for consent to take part. Participants were given detailed instructions on how to complete their task (see Additional file 2) before completing the sort task they were assigned to. There was no time limit. In both tasks, participants were asked to familiarise themselves with the construct definitions and, in the closed sort task only, the domain definitions. In the open sort task, participants were asked to sort the constructs into groups based on their semantic similarity using as many groups as they wanted to (up to 24) and were asked to provide a label for each group created. Participants could also provide a description for each group if they felt it was necessary. In the closed sort task, participants were asked to assign each construct to one or more of the 12 labelled domain boxes that they thought were most appropriate. Across both tasks, participants were asked to give confidence ratings for each assignment; if an item was not allocated to a domain it automatically received a confidence rating of 0. For both tasks, participants were made aware that they could allocate each construct to multiple groups. After assigning all constructs, participants were asked to review their construct allocations and to change any allocations if they wished to. On completion, participants were given further information about the project.

Data analysis

Data were collected using MySQL databases. For the open sort task, data were the construct-group allocations, confidence ratings, and group labels allocated by the participant. For the closed sort task data were the construct-group allocations and confidence ratings.

Open sort

To examine the optimal clustering of constructs (step one: identify domains), the open sort data were first organised into a dissimilarity matrix for each participant. Construct pairs, consisting of all possible construct-by-construct combinations, were assigned 0 if they were placed in the same group and 1 if they were placed in a different group. Agreement across these individual matrices was assessed using Mantel Correlations and Kendall's Coefficient of Concordance, W [37] using `CADM.global` and `CADM.post` from the ‘ape’ package [38] in the R statistics program [39]. Mantel Correlations determine the extent to which an individual participants’ matrix correlates with other participants’ matrices and were used to identify any potential outlying sort patterns that should be excluded from subsequent analysis. An

individual's matrix is considered to be an outlier when it negatively correlates with the other participants' matrices [40]. Kendall's Coefficient of Concordance provides an indication of the overall concordance across all participants' sort patterns, Kendall's W ranges from 1 to 0 [37], where 1 equals complete agreement in sorting patterns and 0 equals no agreement across sorting patterns. To identify the clusters formed through these sorting patterns, means were calculated for each construct pairing across individual matrices to form a single, aggregated dissimilarity matrix. Fuzzy Cluster analysis of this matrix, using the FANNY algorithm [34,41] in the R statistics program, led to a membership value assigned to each construct-cluster pairing. These membership values, converted into percentages, serve as an indication of the extent to which a construct belongs to a particular cluster. Values near 100% indicate a high probability of association with a cluster and values near 0% indicate a low probability of association. Using these values, construct membership to multiple domains can be assessed (*e.g.*, construct x might have 53% membership to cluster y and 47% membership to cluster z).

Constructs were then allocated to the cluster with which it has the highest membership value (known as a 'hard' cluster solution and comparable to outputs of the k-means and k-medoid cluster methods). The fit of constructs within the clusters was calculated by silhouette values ($s(i)$) [42]. Silhouette values are calculated for each construct and range from +1, indicating strong association with a cluster and distance from neighboring clusters, through 0, indicating no distinct association with clusters, to -1, indicating that a construct is probably assigned to the wrong cluster and should be considered as belonging to the neighbouring cluster [42]. The average silhouette values (ave $s(i)$) across construct items within a cluster indicates how well a cluster is defined, and the overall average of silhouette values across clusters can be used to compare cluster solutions of different sizes.

The optimal outcome of the cluster analysis is to achieve the highest average silhouette value with the fewest clusters. It has been argued that average cluster silhouette values greater than 0.70 indicate a strong structure, whilst average silhouette values below 0.50 indicate weak structures and silhouette values <0.25 indicate that there is little evidence for any reliable structure [34]. Informed by these cutoff values, we considered that a construct with a silhouette value <0.25 in relation to a cluster did not belong to that cluster.

In addition to identifying the optimal domain structure, the open sort results were used to identify the extent to which the clusters replicated the construct allocation in the original framework when domain labels were not provided (step two: establish domain content). Congruence was quantified as the percentage of constructs from the original framework domain remaining in a cluster solution (*e.g.*, if domain m contained constructs x , y , and z and the cluster contained only x and z , then congruence was 67%). If the structure of the domains identified in the Fuzzy Cluster Analysis was considerably different from that of the original framework, confidence ratings would be used for secondary analysis to infer construct allocation to the new domains formed.

The group labels given by participants in the open sort task were organised according to their similarity and the frequency that they occurred across participants noted. Those labels that occurred frequently and were related to the content of the newly-formed domains were used to inform newly-formed domain labels (step three: finalise domain labels).

Closed sort

To identify pre-existing domains that might also be considered for inclusion in the framework (step one: identify domains), the strength and agreement of construct allocations to pre-existing domains from the closed sort task were examined. Confidence ratings for each construct x domain pairing, excluding those that had no confidence ratings, were applied to a table. To examine the agreement of these construct x domain ratings and construct assignment across participants, two-way intraclass correlation coefficient (ICC) measures of consistency were used within each domain [43]. In line with previous research we classified ICC values <0.21 as indicating poor agreement, values between 0.21 to 0.40 as fair agreement, values between 0.41 to 0.60 as moderate agreement, and values of ≥ 0.61 as good to excellent agreement [44]. ICC values were used as an indication of the agreement in assignments and ratings across participants, but were not used to influence the final domain content.

To identify the strength of construct assignment to particular domains, DCV methods were used with one-sample t-tests on the participants' confidence ratings against the value zero. A construct was considered as belonging to a domain if its mean confidence rating across participants was significantly greater than zero ($p < 0.05$) following the adoption of Hochberg's correction [45] (see [29,35] for similar methods). Hochberg's correction was used to control for the family-wise error rate given the number of tests used. Whilst this approach may not be considered a conventional use of one-sample t-tests, it provides a suitable criterion for inclusion and exclusion of constructs to a particular domain over and above the use of a subjective cut-off value. To ensure that domains with highly-rated, relevant constructs assigned to them were considered for inclusion in the framework, domains containing two or more constructs with ratings significantly greater than zero were considered. These constructs were also used to inform construct allocation to pre-existing domains (step two: establish domain content). The allocation of constructs to domains in the closed sort task was compared with construct allocation in the original framework to identify the extent of congruence between assigned constructs when domain labels were available. Here congruence was quantified as the percentage of constructs from the original framework domain that were also in that domain within this study.

Ethical approval

The study was approved by University College London's Psychology Department Ethics Committee [STF/2007/003], and each participant gave full informed consent prior to participating.

Results

Eighteen participants completed the closed sort task and 19 the open sort task. All participants indicated that they had experience of behaviour change theory through either research, clinical practice, or teaching (or a combination of these). Participants reported working with behaviour change theory for a mean of 9.74 (SD = 9.14) years and rated both their expertise in behaviour change theory and in delivering behaviour change interventions as 1.97 (SD = 0.64) and 2.46 (SD = 0.90), respectively, as measured on five-point scales (lower score indicates more expertise).

Sample size suitability and open sort pattern concordance

Post-hoc power analysis for the closed sort task revealed that there was sufficient power (82%) with the final sample size of 18 to detect a mean rating of 1.53 (SD = 2.42, $d = 0.63$) as significant within a one-tailed one-sample t-test with $\alpha = 0.05$. The mean rating used in the power analysis was based on the mean of confidence ratings across all variables included in the closed sort analyses.

For the open sort task, Mantel Correlation analysis indicated that all participants' matrices were positively correlated, with aggregated Mantel correlation values for each participant ranging from 0.14 to 0.25 (see Additional file 3). Therefore none of the participants' sort patterns were considered as outliers, and matrices from all 19 participants were included in the final analysis. The overall concordance of sorting patterns was $W = 0.22$, $p = 0.01$, reflecting the unconstrained nature of this task and its high number of variables.

Step one: identify domains

In the open sort task, participants created on average 13.59 (SD = 3.61) groups. To identify the optimal fit for the cluster patterns based on the groups created by the participants, silhouette values for solutions of minimum two and maximum 18 clusters were examined. Analysis revealed the 13-cluster solution to be the most appropriate fit, achieving the highest overall average silhouette value of 0.29 (Figure 2 shows the relative overall silhouette values plotted for each cluster solution). The construct allocation within the 'hard' version of the 13-cluster solution, whereby each construct is allocated to only one domain, is presented in Table 1 next to the domains they most closely represent (see 'Open sort task construct clusters' and see Additional file 4 for related silhouette values).

Figure 2 Comparison of fit across 2–18 cluster solutions

Table 1 Comparison of the refined framework, closed sort task, and open sort task groupings

Refined framework domain name and constructs (* = new domain)	Closed Sort Task construct groups (constructs achieving $p < .05^a$; in order of confidence rating high – low)	Open Sort Task construct clusters (constructs in order of $s(i)$ values decreasing; <i>italics</i> = constructs with silhouette value $< .25$)
1. Knowledge		
Knowledge (including knowledge of condition /scientific rationale)	Knowledge (including knowledge of condition /scientific rationale)	-No cluster representing Knowledge-
Procedural knowledge	Procedural knowledge	
Knowledge of task environment	Knowledge of task environment	
2. Skills		
Skills	Skills	Competence
Skills development	Skills development	Skills
Competence	Competence	Skill assessment
Ability	Ability	Ability
Interpersonal skills	Interpersonal skills	Interpersonal skills
Practice	Practice	Skills development
Skill assessment	Skill assessment	Procedural knowledge

3. Social/ Professional Role and Identity

Professional identity	Professional identity	Organisational development
Professional role	Professional role	Organisational culture / climate
Social identity	Social identity	Management commitment
Identity	Identity	Professional role
Professional boundaries	Professional boundaries	Crew resource management
Professional confidence	Professional confidence	Leadership
Group identity	Leadership	Change management
Leadership	Group identity	Professional boundaries
Organisational commitment	Organisational commitment	Organisational commitment
		Supervision
		Professional identity
		Project management
		<i>Champions / To champion</i>
		<i>Team working</i>
		<i>Power</i>
		<i>Hierarchy</i>

4. Beliefs about Capabilities

Self-confidence	Self-confidence	Self-efficacy
Perceived competence	Perceived competence	Perceived competence
Self-efficacy	Self-efficacy	Self-confidence
Perceived behavioural control	Perceived behavioural control	Perceived behavioural control
Beliefs	Self-esteem	Professional confidence
Self-esteem	Beliefs	<i>Self-esteem</i>
Empowerment	Empowerment	
Professional confidence	Professional confidence	

5. Optimism*

Optimism		Optimism
Pessimism		Pessimism
Unrealistic optimism		Unrealistic optimism
Identity		Identity
		<i>Mindsets</i>

6. Beliefs about Consequences

Outcome expectancies	Outcome expectancies	Beliefs
Chars. of outcome expectancies ^b	Chars. of outcome expectancies ^b	Attitudes
Beliefs	Beliefs	Outcome expectancies
Anticipated regret	Anticipated regret	Chars. of outcome expectancies ^b
Consequents	Consequents	<i>Illness representations</i>

7. Reinforcement *

Rewards (proximal/distal, valued/not valued, probable/improbable)		Rewards (proximal/distal, valued/not valued, probable/improbable)
Incentives		Incentives
Punishment		Punishment
Consequents		Sanctions
Reinforcement		Contingencies

Contingencies Sanctions		Reinforcement Consequents
8. Intentions*		
Stability of intentions	Goals (autonomous, controlled)	Stability of intentions
Stages of change model	Intrinsic motivation	Stages of change model
Trans. model/stages of change ^b	Goal target /setting	Trans. model/stages of change ^b
	Distal and proximal goals	<i>Certainty of intentions</i>
	Goal priority	<i>Intention</i>
	Intention	<i>Commitment</i>
	Stability of intentions	<i>Intrinsic motivation</i>
	Certainty of intentions	<i>Mods. of the intention-behaviour gap^b</i>
9. Goals*		
Goals (distal / proximal)		Goal target/ setting
Goal priority		Goals (distal / proximal)
Goal / target setting		Goal priority
Goals (autonomous / controlled)		Goals (autonomous / controlled)
Action planning		Action planning
Implementation intention		Implementation intention
		<i>Representation of tasks</i>
10. Memory, Attention and Decision Processes		
Memory	Memory	Memory
Attention	Attention	<i>Attention control</i>
Attention control	Attention control	<i>Attention</i>
Decision making	Decision making	<i>Decision making</i>
Cognitive overload / tiredness	Cognitive overload / tiredness	<i>Appraisal</i>
		<i>Schemas</i>
		<i>Cognitive overload / tiredness</i>
11. Environmental Context and Resources		
Environmental stressors	Environmental stressors	<i>Conflict-comp. demands, conf. roles^b</i>
Resources / material resources	Resources / material resources	<i>Barriers and facilitators</i>
Barriers and facilitators	Barriers and facilitators	<i>Environmental stressors</i>
Organisational culture /climate	Organisational culture climate	<i>Knowledge of task environment</i>
Person x environment interaction	Person x environment interaction	<i>Person x environment interaction</i>
Salient events / critical incidents	Salient events / critical incidents	<i>Control of behaviour, material and social environment</i>
		<i>Knowledge</i>
		<i>Empowerment</i>
		<i>Negotiation</i>
		<i>Anticipated regret</i>
		<i>Threat</i>
		<i>Past behaviour</i>

12. Social Influences

Social pressure	Social pressure	Group norms
Social norms	Social norms	Group conformity
Group conformity	Group conformity	Group identity
Social comparisons	Social comparisons	Social pressure
Group norms	Group norms	Social norms
Social support	Social support	Social support
Intergroup conflict	Intergroup conflict	Alienation
Power	Power	Social comparisons
Group identity	Group identity	Intergroup conflict
Alienation	Alienation	Social identity
Modelling	Modelling	

13. Emotion

Anxiety	Anxiety	Anxiety
Fear	Fear	Depression
Affect	Affect	Positive / negative affect
Stress	Stress	Stress
Depression	Depression	Fear
Positive / negative affect	Positive / negative affect	Affect
Burn-out	Burn-out	Burn-out

14. Behavioural Regulation

Self-monitoring	Self monitoring	<i>Learning</i>
Breaking habit	Breaking habit	<i>Review</i>
Action planning	Action planning	<i>Breaking habit</i>
		<i>Direct experience</i>
		<i>Self-monitoring</i>
		<i>Evaluation</i>

Key: ^a = after applying Hochberg's correction for multiple comparisons within each domain, ^b - Chars. of outcome expect. = Characteristics of outcome expectancies; Conflict-comp. demands, conf. roles = Conflict - competing demands, conflicting roles; Mods. of the intention-behaviour gap = Moderators of the intention-behaviour gap; Trans. model/stages of change = Transtheoretical model and stages of change

Within the 13 cluster solution, three of the original domains, 'Beliefs about Capabilities', 'Beliefs about Consequences', and 'Motivation and Goals', formed two clusters each. Four of the 13 clusters showed low average silhouette values (<0.25), one of the clusters arising from the 'Motivation and Goals' domain, also 'Memory, Attention, and Decision Processes', 'Environmental Context and Resources', and 'Behavioural Regulation'. This was due to the inclusion of a number of constructs that had low (or negative) silhouette values, indicating that these constructs were not closely grouped with the other constructs within these clusters. To examine the impact of these low value constructs, they were removed and the average silhouette values of the clusters were recalculated. After removal, 10 clusters had average silhouette values greater than 0.25 (see Additional file 4, column 7) with the average silhouette value across these 10 domains equal to 0.47 and the concordance across sorting patterns increasing to $W = 0.34$ ($p = 0.01$). Three clusters remained with silhouettes below 0.25, 'Environmental Context and Resources', 'Memory, Attention, and Decision Processes', and 'Behavioural Regulation'. Whilst these clusters showed relatively weak cluster formations in the open sort, the confidence ratings in the closed sort indicated that when the domain labels were apparent the confidence ratings of allocated constructs were sufficient to

form domains. Therefore, these three domains were considered important to retain in the framework. Also, there was no cluster indicative of the domain of 'Knowledge' in the 13 cluster solution, with all constructs from the original 'Knowledge' domain allocated to alternative clusters; the constructs 'Knowledge' and 'Knowledge of task environment' were allocated to the 'Environmental Context and Resources' cluster, 'Mindsets' was allocated to one of the clusters arising from the 'Beliefs about Capabilities' domain, 'Schemas' was allocated to the 'Memory, Attention and Decision Processes' cluster and 'Procedural knowledge' was allocated to the 'Skills' cluster. However, within these construct reassignments only 'Procedural Knowledge' attained a silhouette value equal to or greater than 0.25 (all other knowledge-related constructs <0.23). In contrast, within the closed sort task the confidence ratings of three knowledge-related constructs, 'Knowledge', 'Knowledge of Task Environment' and 'Procedural Knowledge' indicated that knowledge might form a separate domain if the label 'Knowledge' was available (confidence ratings >6.32 across these three constructs). Therefore, it was considered that the 'Knowledge' should be included when it was thought to be important in the specific context.

Based on the results across both tasks, 14 domains were specified through this first step. Eight domains were similar to the original framework domains: 'Knowledge', 'Skills', 'Social/Professional Role and Identity', 'Memory, Attention and Decision Processes', 'Environmental Context and Resources', 'Social Influences', 'Emotion', and 'Behavioural Regulation'. The domains 'Beliefs about Capabilities', 'Beliefs about Consequences', and 'Motivation and Goals' were retained but were divided into six new clusters. The domain of 'Nature of the Behaviours' was removed because it was not represented in the open sort by any single cluster solution and only had one construct assigned to it in the closed sort task.

Step two: establish domain content

The mean confidence ratings and ICCs for the construct allocation to domains given in the closed sort task are shown in Additional file 4. In the closed sort task, the content of domains for 'Emotion', 'Skills', 'Motivation and Goals', 'Social/Professional Role and Identity', 'Beliefs about Capabilities', and 'Memory, Attention and Decision Processes' all showed good congruence with the constructs listed in the domains of the original framework (>69%) and fair ICCs (0.31 to 0.40). The domains of 'Knowledge', 'Environmental Context and Resources' and 'Social Influences' showed lower congruence with the constructs listed in the original domains (27% to 50%) and fair ICCs (0.26 to 0.39). The domains of 'Behavioural Regulation', 'Nature of the Behaviours', and 'Beliefs about Consequences' showed both low congruence between the original constructs and those assigned to these domains (<27%) and low ICCs (0.07 to 0.25). This was due in part to the low number of constructs assigned to these domains. 'Behavioural Regulation' only had two constructs out of the original ten (Self-monitoring, and Action planning) that were rated as belonging to the domain. 'Nature of the Behaviours' only had one construct (Routine/automatic/habit) included from the original six constructs. 'Beliefs about Consequences' only had five of the constructs included from the original framework. Only constructs that achieved significance in the closed sort after Hochberg correction were allocated to these pre-existing domains from the original framework.

For the newly formed clusters arising from 'Motivation and Goals' (two clusters), 'Beliefs about Capabilities' (one cluster), and 'Beliefs about Consequences' (one cluster), construct allocation was informed by the constructs assigned to these clusters in the open sort task that achieved individual construct silhouette values greater than 0.25.

To identify if any constructs should be considered for multiple allocation to domains the membership values from the Fuzzy Cluster Analysis were examined. This revealed that the majority of constructs (74/112) were strongly associated with only one cluster (*i.e.*, showed membership values over 80% to one specific cluster, see Additional file 5). A further 32 constructs showed moderately high associations with one cluster (memberships values between 28% to 79%), with the remaining proportion of memberships for these constructs spread over other clusters. Only eight constructs had the greatest proportion of their membership values split across at least two clusters, indicating possible multiple domain memberships, these were ‘Knowledge’, ‘Coping strategies’, ‘Empowerment’, ‘Anticipated regret’, ‘Negotiation’, ‘Moderators of the intention-behaviour gap’, ‘Routine/automatic/habit’, and ‘Past behaviour’. However, none of the multiple memberships indicated in the open sort results were replicated in the closed sort task where three different constructs, ‘Professional confidence’, ‘Beliefs’, and ‘Group identity’, were allocated to multiple domains. Given lack of agreement across the two tasks, only the multiple allocations shown in the closed sort or multiple allocations that occurred through the construct selection process (*i.e.*, using the closed sort for predefined domains and using the open sort for new domains) were used in the final framework. Using this approach, six constructs were allocated to more than one domain: (the domains that constructs are allocated to are shown in parenthesis) ‘Action planning’ (Goals and Behavioural Regulation), ‘Beliefs’ (Beliefs about Consequences and Beliefs about Capabilities), ‘Consequents’ (Beliefs about Consequences and Reinforcement), ‘Group identity’ (Social/Professional Role and Identity and Social Influences), ‘Identity’ (Social/Professional Role and Identity and Optimism), and ‘Professional confidence’ (Social/Professional Role and Identity and Beliefs about Capabilities).

Step three: finalise domain labels

Fifteen of the 19 open sort participants provided labels for the groups they created. The majority of labels were similar to those in the original framework: (number of participants giving that label shown in parenthesis): Knowledge (4), Skills (5), Intentions (7), Goals (6), Emotion (9), Cognitive-related (8), Beliefs (5), Beliefs about Capabilities (7), Outcomes (6), Environment-related (6), Organisational (7), Models / Theories (8), Learning / Reinforcement (7), Self-Regulation (3), Consequences (3), Social / Group (14), and Planning (2). Examples of other labels that could not be categorized (*i.e.*, labels given by only one participant) included ‘Techniques’, ‘Barriers’, ‘Awareness’, ‘Reviewing’, and ‘Persistence’. Given the similarity between the labels provided in the open sort task and the labels used in the original framework, those domains that were retained with only minor modification were allocated their respective label used in the original framework. The labels for the newly developed domains were based on the frequency of labels and the domain content: these were Intentions, Goals, Reinforcement, and Optimism. The domain label of ‘Emotion’ was pluralised to ‘Emotions’ to bring in line with the other domain labels and to ensure that it clearly represented the range of emotions that were included as component constructs. Therefore, the final labels chosen to represent the 14 domains were: ‘Knowledge’, ‘Skills’, ‘Social/Professional Role and Identity’, ‘Beliefs about Capabilities’, ‘Optimism’, ‘Beliefs about Consequences’, ‘Reinforcement’, ‘Intentions’, ‘Goals’, ‘Memory, Attention and Decision Processes’, ‘Environmental Context and Resources’, ‘Social Influences’, ‘Emotions’, and ‘Behavioural Regulation’.

The refined framework

The refined framework contains 14 domains and 84 component constructs (the number of component constructs in each domain is defined in brackets): ‘Knowledge’ (3), ‘Skills’ (7), ‘Social/Professional Role and Identity’ (9), ‘Beliefs about Capabilities’ (8), ‘Optimism’ (4), ‘Beliefs about Consequences’ (5), ‘Reinforcement’ (7), ‘Intentions’ (3), ‘Goals’ (6), ‘Memory, Attention and Decision Processes’ (5), ‘Environmental Context and Resources’ (6), ‘Social Influences’ (11), ‘Emotions’ (7), and ‘Behavioural Regulation’ (3). The full version of the new framework is shown in Table 2.

Table 2 The refined framework based on results of the open and closed sort tasks

Domain (definition¹)	Constructs
1. Knowledge (An awareness of the existence of something)	Knowledge (including knowledge of condition /scientific rationale) Procedural knowledge Knowledge of task environment
2. Skills (An ability or proficiency acquired through practice)	Skills Skills development Competence Ability Interpersonal skills Practice Skill assessment
3. Social/Professional Role and Identity (A coherent set of behaviours and displayed personal qualities of an individual in a social or work setting)	Professional identity Professional role Social identity Identity Professional boundaries Professional confidence Group identity Leadership Organisational commitment
4. Beliefs about Capabilities (Acceptance of the truth, reality, or validity about an ability, talent, or facility that a person can put to constructive use)	Self-confidence Perceived competence Self-efficacy Perceived behavioural control Beliefs Self-esteem Empowerment Professional confidence
5. Optimism (The confidence that things will happen for the best or that desired goals will be attained)	Optimism Pessimism Unrealistic optimism Identity

<p>6. Beliefs about Consequences (Acceptance of the truth, reality, or validity about outcomes of a behaviour in a given situation)</p>	<p>Beliefs Outcome expectancies Characteristics of outcome expectancies Anticipated regret Consequents</p>
<p>7. Reinforcement (Increasing the probability of a response by arranging a dependent relationship, or contingency, between the response and a given stimulus)</p>	<p>Rewards (proximal / distal, valued / not valued, probable / improbable) Incentives Punishment Consequents Reinforcement Contingencies Sanctions</p>
<p>8. Intentions (A conscious decision to perform a behaviour or a resolve to act in a certain way)</p>	<p>Stability of intentions Stages of change model Transtheoretical model and stages of change</p>
<p>9. Goals (Mental representations of outcomes or end states that an individual wants to achieve)</p>	<p>Goals (distal / proximal) Goal priority Goal / target setting Goals (autonomous / controlled) Action planning Implementation intention</p>
<p>10. Memory, Attention and Decision Processes (The ability to retain information, focus selectively on aspects of the environment and choose between two or more alternatives)</p>	<p>Memory Attention Attention control Decision making Cognitive overload / tiredness</p>
<p>11. Environmental Context and Resources (Any circumstance of a person's situation or environment that discourages or encourages the development of skills and abilities, independence, social competence, and adaptive behaviour)</p>	<p>Environmental stressors Resources / material resources Organisational culture /climate Salient events / critical incidents Person x environment interaction Barriers and facilitators</p>

12. Social influences (Those interpersonal processes that can cause individuals to change their thoughts, feelings, or behaviours)	Social pressure Social norms Group conformity Social comparisons Group norms Social support Power Intergroup conflict Alienation Group identity Modelling
13. Emotion (A complex reaction pattern, involving experiential, behavioural, and physiological elements, by which the individual attempts to deal with a personally significant matter or event)	Fear Anxiety Affect Stress Depression Positive / negative affect Burn-out
14. Behavioural Regulation (Anything aimed at managing or changing objectively observed or measured actions)	Self-monitoring Breaking habit Action planning

¹All definitions are based on definitions from the American Psychological Associations' Dictionary of Psychology [36]

Discussion

This validation study, using open and closed sort tasks, has shown good support for the basic structure of the TDF and led to refinements producing 14 domains: 'Knowledge', 'Skills', 'Social/Professional Role and Identity', 'Beliefs about Capabilities', 'Optimism', 'Beliefs about Consequences', 'Reinforcement', 'Intentions', 'Goals', 'Memory, Attention and Decision Processes', 'Environmental Context and Resources', 'Social Influences', 'Emotions', and 'Behavioural Regulation'. There are three key advantages of this framework. First, there is comprehensive coverage of possible influences on behavior. Second, there is clarity about each kind of influence, as a result of each domain being specified by component constructs. Third, the framework makes links between theories of behaviour change and techniques of behaviour change to address implementation problems. The framework can be applied by gathering either qualitative data (interviews or focus groups) or quantitative data (*e.g.*, by questionnaires). The findings have strengthened the evidence for the structure and content of the domains, increasing confidence in the usefulness of the TDF as an approach to assessing implementation and other behaviour problems, and laying the foundation for theoretically informed interventions.

To the authors' knowledge, Fuzzy Cluster Analysis and Discriminant Content Validity have not been used in combination to determine the validity of a framework structure. By combining these methods, we have investigated the validity of the original framework both when the original domain labels were, and were not, presented. The results from both the open and closed sort tasks generally replicated the original framework, which adds confidence to the validity of the framework's structure.

The study findings pointed to some changes in the framework, which had good face validity. First, there was a separation and clarification of a number of existing domains. The separation of 'Motivation and Goals' into two domains of 'Intentions' and 'Goals' was indicated by both the closed and open sort task results and was particularly apparent in the labels provided by the participants, with labels relating to 'intentions' and 'goals' amongst the most frequently used. The APA dictionary of psychology defines a goal as 'the end state toward which a human or non-human animal is striving: the purpose of an activity or endeavour.' [36] and defines intention as 'a conscious decision to perform a behaviour; a resolve to act in a certain way or an impulse for purposeful action. In experiments, intention is often equated with goals defined by the task instructions.' [36]. Therefore 'Goals' tends to refer to an end state that can be seen as a preferred outcome, whereas 'Intentions' is concerned with the resolve to initiate or terminate a behaviour. The separation of 'Beliefs about Consequences' into two domains, one retaining the original name and one termed 'Reinforcement', made psychological sense. The former refers to beliefs whereas the latter refers to constructs of associative learning. There was also a separation within the 'Beliefs about Capabilities' domain with a separate 'Optimism' domain being formed. This separation makes psychological sense in that the constructs in the optimism cluster concern general disposition rather than specific capabilities required to achieve an outcome. The domain 'Behavioural Regulation' is clearer in the refined framework where it refers to self-regulatory processes rather than including a mixture of self-regulation and goal-related constructs, as was the case in the original TDF.

Second, the 'Nature of the Behaviours' domain was dropped in the new framework, because its original component constructs were not assigned to the domain in the closed sort, and there was no cluster representing the 'Nature of the Behaviours' in the open sort. This strengthens the coherence of the new TDF because the domain did not sit easily in the original TDF. It was defined as the 'Essential characteristics of the behaviour', had constructs relating to habit and experiences/past behaviours, and constituted an outcome, or dependent variable, rather than an independent variable. Whilst understanding the nature of behaviours is absolutely key to analyzing implementation and other behavioural problems, analysing the nature of behaviour is a different task than analysing influences on behaviour. A complementary theoretical approach to analyzing behaviour as a basis for intervention design has been recently developed, as part of the 'Behaviour Change Wheel' [46]. Previous studies that have adopted the TDF framework have seldom used the 'Nature of the Behaviours' domain [17]. Furthermore, where the domain has been used, in relation to changing transfusion practice, it was noted that when participants were asked questions relating to the 'Nature of the Behaviours' domain they often repeated answers that were previously given in response to questions relating to the 'Behavioural Regulation' domain [19], therefore making responses in respect to 'Nature of the Behaviours' redundant. This along with empirical evidence shown in the present study shows a clear indication that the 'Nature of the Behaviours' domain should be considered differently to the components of the TDF.

In designing interventions, the TDF fits well with the Behaviour Change Wheel (BCW) [46] referred to above. The BCW characterises the target behavior in terms of Capability, Opportunity and Motivation (the COM-B system in the Behaviour Change Wheel), with Capability divided into psychological and physical capability, Opportunity divided into social and physical opportunity and Motivation divided into reflective and automatic motivation. The domains from the refined framework have been independently mapped onto the COM-B segments by three experts in behavior change, with 100% agreement (Table 3). Use of the COM-B may help identify the TDF domains that are likely to be important in changing

behaviour. By starting with a behavioural analysis such as this, intervention designers can be selective about the domains they investigate to inform the nature of the intervention.

Table 3 Mapping of the Behaviour Change Wheel’s COM-B system to the TDF Domains

COM-B component		TDF Domain
Capability	Psychological	Knowledge Skills Memory, Attention and Decision Processes Behavioural Regulation
	Physical	Skills
Opportunity	Social	Social Influences
	Physical	Environmental Context and Resources
Motivation	Reflective	Social/Professional Role & Identity Beliefs about Capabilities Optimism Beliefs about Consequences Intentions Goals
	Automatic	Social/Professional Role & Identity Optimism Reinforcement Emotion

Research using the TDF has identified lack of knowledge as a potential barrier to a number of professional health behaviours, including hand hygiene [17], changing transfusion practice [19], and the adoption of tobacco use cessation counseling in dental practices [21]. However, for most health-related behaviours that are the target of theoretically-based behaviour change interventions (*e.g.*, smoking, healthy eating, physical activity), knowledge is not an important source of variance [47-52]. This may be why participants did not identify a separate domain for knowledge, but that it has been identified as an important influence on some health professional behaviours. We therefore recommend that knowledge be assessed along with the other TDF domains.

Of the original 112 unique constructs in the TDF, 34 have been removed. They appear to be a mixture of rather vague constructs (*e.g.*, Mindsets), very general constructs (*e.g.*, Review), ambiguous constructs (*e.g.*, Commitment), and infrequently used constructs in behaviour change theory (*e.g.*, Generating alternatives). Because constructs that are ‘poorly defined’, ‘undifferentiated’, and ‘imprecisely partitioned’ have previously been found to influence the content validity of assessment instruments [53], their exclusion from the refined framework seems warranted. The remaining constructs stand as a more defined, focused set of constructs that are more relevant to behaviour change theory and more precisely partitioned into domains. Within these remaining constructs, there are also a number of constructs that appear in more than one domain. Such allocations indicate the relevance of constructs across different domain contexts. For example, ‘Action Planning’ appears in both the ‘Goals’ domain and the ‘Behavioural Regulation’ domain and can be considered as being influential in achieving a particular goal (*e.g.* I plan to achieve goal x through specific actions) and also in regulating behaviour (*e.g.* in a certain situation I plan to behave in a particular way).

Two domains showed weak clustering: ‘Environmental Context and Resources’ and ‘Behavioural Regulation’. However, these domains, alongside the domain of ‘Knowledge’, were comprised of constructs consistently assigned to them when the original domain labels were presented in the closed sort task. This suggests that people are clear about the constructs within these domains when the domain labels are present. A second limitation is that the refined framework is limited to the constructs identified in the original framework. Whilst the current range of component constructs is quite extensive, it does not cover all theories of behaviour change [54], and future research is likely to identify others that are important to behaviour change. Just as the current framework is an advance on the 2005 version, so future work is likely to improve it further. The issue of how to evaluate appropriateness and quality of theories in given contexts is an under-researched area, but one that is beginning to be addressed [54].

Conclusions

Through a three-step validation process, the present research has identified a refined version of the original TDF. This refined framework contains 14 domains and 84 component constructs. The strength of the framework validation stems from the methods used. Both the closed and open sort task methods alongside DCV and Fuzzy Cluster analysis have provided complementary methods for examining the structure of the original framework. DCV methods assessed the confidence of allocation of constructs to the described domains, and the Fuzzy Cluster Analysis led to a refinement of the structure of the framework. The TDF has proved useful across a number of healthcare systems and this empirically-based refinement lays the basis for stronger explanatory and predictive power, and therefore increased usefulness in informing interventions to improve implementation and bring about other behaviour change.

Competing interests

SM and DOC are both Associate Editors of Implementation Science.

Authors’ contributions

JC conducted preparation of materials, data collection, data analysis, and drafted the manuscript. DOC and SM commented on and aided in the drafting of the manuscript. All authors read and approved the final manuscript.

Acknowledgements

We would like to thank the MRC Population Health Sciences Research Network for funding this work, Daniel and Matthew West (www.britishwebsites.net) for website design, Henry Potts (University College London) for statistical advice and Jill Francis (University of Aberdeen) and Lou Atkins (University College London) for helpful comments on an earlier draft. DOC is supported by an Australian National Health and Medical Research Council Public Health Fellowship.

References

1. Clinical Effectiveness Research Agenda Group (CERAG): *An Implementation Research Agenda: A report prepared for the High Level Group on Clinical Effectiveness*. London: CERAG; 2008.
2. World Health Authority (WHA): **World Health Assembly Resolution 51.12: Health Promotion**. 2010, Accessed from [<http://www.who.int/healthpromotion/wha51-12/en/>], 27th July 2010.
3. Newman M, Papadopoulous L, Sigsworth J: **Barriers to evidence-based practice**. *Clin Eff Nurs* 1998, **2**:11–18.
4. McKenna H, Ashton S, Keeney S: **Barriers to evidence based practice in primary care: a review of the literature**. *Int J Nurs Stud* 2004, **41**:369–378.
5. Grol R, Grimshaw J: **From evidence to best practice: effective implementation of change in patients' care**. *Lancet* 2003, **362**:1225–1230.
6. Abraham C, Kelly MP, West R, Michie S: **The UK national institute for health and clinical excellence public health guidance on behavior change: A brief introduction**. *Psychology Health Med* 2009, **14**:1–8.
7. Albarracin D, Gillette JG, Earl AN, Glasman LR, Durantini MR, Ho MH: **A test of major assumptions about behavior change: A comprehensive look at the effects of passive and active HIV-prevention interventions since the beginning of the epidemic**. *Psychol Bull* 2005, **131**:856–897.
8. Noar SM, Zimmerman RS: **Health behavior theory and cumulative knowledge regarding health behaviours: are we moving in the right direction?** *Health Ed Res: Theory Pract* 2005, **20**:275–290.
9. Michie S, Prestwich A: **Are interventions theory-based? Development of a theory coding scheme**. *Heal Psychol* 2010, **29**:1–8.
10. Davies P, Walker AE, Grimshaw J: **A systematic review of the use of theory in the design and implementation strategies and interpretation of the results of rigorous evaluations**. *Implement Sci* 2010, **5**:1–6.
11. Weinstein N: **Testing four competing theories of health-protective behaviour**. *Heal Psychol* 1993, **12**:324–333.
12. Nigg CR, Allegrante JP, Ory M: **Theory-comparison and multiple-behaviour research: common themes advancing health behaviour research**. *Health Ed Res: Theory Prac* 2002, **17**:670–679.
13. Michie S, Johnston M, Abraham C, Lawton R, Parker D, Walker A, on behalf of the 'Psychological Theory' Group: **Making psychological theory useful for implementing evidence based practice: a consensus approach**. *Qual Saf Health Care* 2005, **14**:26–33.

14. McKenzie JE, French SD, O'Connor DA, Grimshaw J, Mortimer D, Michie S, Francis J, Spike N, Schattner P, Kent PM, *et al*: **Implementing a clinical practice guideline for acute low back pain evidence-based management in general practice (IMPLEMENT): cluster randomised controlled trial study protocol.** *Implement Sci* 2008, **3**:11.
15. McKenzie JE, O'Connor DA, Page MJ, Mortimer D, French SD, Walker BF, Keating JL, Grimshaw JM, Michie S, Francis JJ, Green SE: **Improving the care for people with acute low-back pain by allied health professionals (the ALIGN trial): A cluster randomised trial protocol.** *Implement Sci* 2010, **5**:86.
16. French SD, Green SE, O'Connor D, McKenzie JE, Francis JJ, Michie S, Buchbinder R, Schattner P, Spike N, Grimshaw JM: **Developing theory-informed behaviour change interventions to implement evidence into practice: a systematic approach using the Theoretical Domains Framework.** *For submission to Implementation Science in this series* 2011.
17. Dyson J, Lawton R, Jackson C, Cheater F: **Does the use of a theoretical approach tell us more about hand hygiene behaviour? The barriers and levers to hand hygiene.** *J Infection Prev* 2010, **12**:17.
18. Francis J, Stockton C, Eccles MP, Johnston M, Cuthbertson BH, Grimshaw JM, Hyde C, Tinmouth A, Stanworth SJ: **Evidence-based selection of theories for designing behaviour change interventions: Using methods based on theoretical construct domains to understand clinicians' blood transfusion behaviour.** *Br J Heal Psychol* 2009, **14**:625–646.
19. Francis J, Tinmouth A, Stanworth SJ: **Using theories of behaviour change to understand transfusion prescribing three clinical contexts in two countries: Development work for and implementation trial.** *Implement Sci* 2009, **4**:70.
20. Michie S, Pilling S, Garety P, Whitty P, Eccles MP, Johnston M, Simmons J: **Difficulties implementing a mental health guideline: an exploratory investigation using psychological theory.** *Implement Sci* 2007, **2**:8.
21. Amemori M, Korhonen T, Kinnunen T, Michie S, Murtomaa H: **Enhancing implementation of tobacco use prevention and cessation counselling guideline among dental providers: a cluster randomised controlled trial.** *Implement Sci* 2011, **6**:13.
22. Paul CL: **A modified approach to a new card sorting methodology.** *J Usability Stud* 2008, **4**:7–30.
23. Whaley AL, Longoria RA: **Preparing card sort data for Multidimensional Scaling Analysis in Social Psychological Research: A methodological approach.** *J Soc Psychol* 2009, **149**:105–115.
24. Trochim WMK, Cook JA, Setze RJ: **Using concept mapping to develop a conceptual framework of staff's views of a supported employment program for individuals with severe mental illness.** *J Consult Clin Psychol* 1994, **62**:766–775.
25. Morrow D, Leirer V, Altieri P, Tanke E: **Elders' schema for taking medication: implications for instruction design.** *J Gerontol* 1991, **46**:378–385.

26. Niven K, Totterdell P, Holman D: **A classification of controlled interpersonal affect regulation strategies.** *Emotion* 2009, **9**:498–509.
27. Chollet S, Lelièvre M, Abdi H, Valentin D: **Sort and Beer: Everything you wanted to know about the sorting task but did not dare to ask.** *Food Quality and Preference* 2011, **22**:507-520.
28. Reed CL, McGoldrick JE, Shackelford R, Fidopiastis CM: **Are human bodies represented differently from other objects? Experience shapes object representations.** *Vis Cogn* 2004, **11**:523–550.
29. Dixon D, Pollard B, Johnston M: **What does the chronic pain grade questionnaire measure?** *Pain* 2007, **130**:249–253.
30. Lynn MR: **Determination and quantification of content validity.** *Nurs Res* 1986, **35**:382.
31. Waltz CW, Strickland OL, Lenz ER: *Measurement in nursing research.* Philadelphia, PA: F.A. Davis Co; 1991.
32. Dixon D, Johnston M, McQueen M, Court-Brown C: **The Disabilities of the Arm, Shoulder and Hand Questionnaire (DASH) can measure the impairment, activity limitations and participation restriction constructs from the International Classification of Functioning, Disability, and Health (ICF).** *BMC Musculoskelet Disord* 2008, **9**:114.
33. Carmines EG, Zeller RA: *Reliability and Validity Assessment.* Newbury Park, CA: Sage Publications; 1979.
34. Kaufman L: *Rousseuw PJ: Finding groups in data: An introduction to data analysis.* New York: Wiley; 1990.
35. Pollard B, Johnston M, Dieppe P: **What do osteoarthritis health outcome instruments measure? Impairment, activity limitation or participation restriction?** *J Rheumatol* 2006, **33**:757–63.
36. American Psychological Association (APA): *APA Dictionary of Psychology.* Washington, DC: American Psychological Association; 2007.
37. Kendall MG, Babington Smith B: **The Problem of m Rankings.** *Ann Math Stat* 2009, **10**:275–287.
38. Paradis E, Bolker B, Claude J, Sien Cuong H, Desper R, Durand B, Dutheil J, Gascuel O, Heilbl C, Lawson D, Lefort V, Legrande, Lemon J, Noel Y, Nylander J, Ongen-Rhein R, Popescu A A, Schliep K, Strimmer K, de Vienne D: **Package ‘ape’: Analysis of Phylogenetics and Evolution.** URL [<http://cran.r-project.org/web/packages/ape/ape.pdf>]. 2011, 1-222.
39. R Development Core Team: *R: A language and environment for statistical computing.* Vienna, Austria: R Foundation for Statistical Computing; ISBN 3-900051-07-0; URL [<http://www.R-project.org/>]; 2011.

40. Legendre P: **CADM.global: Congruence among distance matrices.** In Paradis E, Bolker B, Claude J, Sien Cuong H, Desper R, Durand B, Dutheil J, Gascuel O, Heilbl C, Lawson D, Lefort V, Legrande, Lemon J, Noel Y, Nylander J, Opgen-Rhein R, Popescu A A, Schliep K, Strimmer K, de Vienne D: **Package ‘ape’: Analysis of Phylogenetics and Evolution.** URL [<http://cran.r-project.org/web/packages/ape/ape.pdf>]. 2011, 1-222.
41. Maechler M: **Package ‘cluster’: Cluster Analysis Extended Rousseeuw *et al.* Version 1.14.0.** URL [<http://cran.r-project.org/web/packages/cluster/cluster.pdf>]. 2011.
42. Rousseeuw PJ: **Silhouettes: a graphical aid to the interpretation and validation of cluster analysis.** *J Comput Appl Math* 1987, **20**:53–65.
43. McGraw K, Wong SP: **Forming inferences about some intraclass correlation coefficients.** *Psychological Methods* 1996, **1**:30–46.
44. Landis JR, Koch GG: **The measurement of observer agreement for categorical data.** *Biometrics* 1977, **33**:159–174.
45. Hochberg Y: **A sharper Bonferroni procedure for multiple tests of significance.** *Biometrika* 1988, **75**: 800-802.
46. Michie S, van Stralen M, West R: **The Behaviour Change Wheel: a new method for characterising and designing behaviour change interventions.** *Implement Sci* 2011, **6**:42.
47. Kenkel DS: **Health behaviour, health knowledge, and schooling.** *J Polit Econ* 1991, **99**:287–305.
48. Klesges RC, Somes G, Pascale RW, Klesges LM, Murphy M, Brown K, Williams E: **Knowledge and beliefs regarding the consequences of cigarette smoking and their relationships to smoking status in a biracial sample.** *Heal Psychol* 1988, **7**:387–401.
49. Eckhardt L, Woodruff SI, Elder JP: **A longitudinal analysis of adolescent smoking and its correlates.** *J Sch Heal* 1994, **64**:67–72.
50. Dishman RK, Sallis JF, Orenstein DR: **The determinants of physical activity and exercise.** *Public health reports* 1985, **100**:158–171.
51. Baranowski T, Cullen KW, Baranowski J: **Psychosocial correlates of dietary intake: advancing dietary intervention.** *Annu Rev Nutr* 1999, **19**:17–40.
52. Shapiro J, Radecki S, Charchian AS, Josephson V: **Sexual behavior and AIDS-related knowledge among community college students in Orange County, California.** *J Community Health* 1999, **24**:29–43.
53. Haynes SN, Richard DCS, Kubany ES: **Content validity in psychological assessment: a functional approach to concepts and methods.** *Psychol Assess* 1995, **7**:238–247.
54. Hobbs L, Campbell R, Hildon Z and Michie S. **Behaviour change theories across Psychology, Sociology, Anthropology and Economics: A Systematic Review.** *Psychology and Health* 2011, **26**:Supplement 1.

55. Taylor SE: Health Psychology (5th Edition). Boston: MacGraw-Hill; 2003
56. Sutherland S: The Macmillan Dictionary of Psychology (2nd Edition). London: Palgrave Macmillan; 1995.
57. **WordNet** [www.wordnet.princeton.edu/perl/webwn]
58. **Oxford English Dictionary Online** [www.oed.com]
59. **Wikipedia** [www.en.wikipedia.org/wiki]
60. Ajzen I: **The Theory of Planned Behavior**. *Organizational Behavior and Human Decision Processes* 1991, **50**: 179-211.
61. Ogden J: Health Psychology: a textbook (2nd Edition). Buckingham: Open University Press; 2000.
62. **World Health Organization (WHO)**
[www.who.int/mental_health/management/depression/definition/en/]
63. **Dictionary.com** [<http://dictionary.reference.com/>]
64. Forsyth DR: Group Dynamics (5th Edition). Wadsworth: Cengage Learning; 2006.
65. Alicke MD: **Evaluating social comparison targets**. In Handbook of Social Comparison: Theory and Research. Edited by Suls JM, Wheeler L. New York: Plenum Publishing; 2000: 271-293.
66. **YourDictionary.com** [www.yourdictionary.com/]
67. **The Free Dictionary** [www.thefreedictionary.com/]
68. Prochaska JO, DiClemente CC: The Transtheoretical Approach: Crossing Traditional Boundaries of Change. Homewood IL: J.Irwin.

Additional files

Additional_file_1 as PDF

Additional file 1: Constructs from the original Theoretical Domains Framework and associated definitions [55-68].

Additional_file_2 as PDF

Additional file 2: Instructions and additional questions given to participants. Instructions, consent information and additional questions given to participants.

Additional_file_3 as PDF

Additional file 3: Mantel correlation values by participant. Mantel correlation coefficients for each participant.

Additional_file_4 as PDF

Additional file 4: Comparison of the refined framework, closed sort task, and open sort task groupings with related mean confidence ratings, Intra-Class Correlation (ICC) values and silhouette values.

Additional_file_5 as PDF

Additional file 5: Membership values (%) for each construct to each domain cluster defined in the cluster analysis.

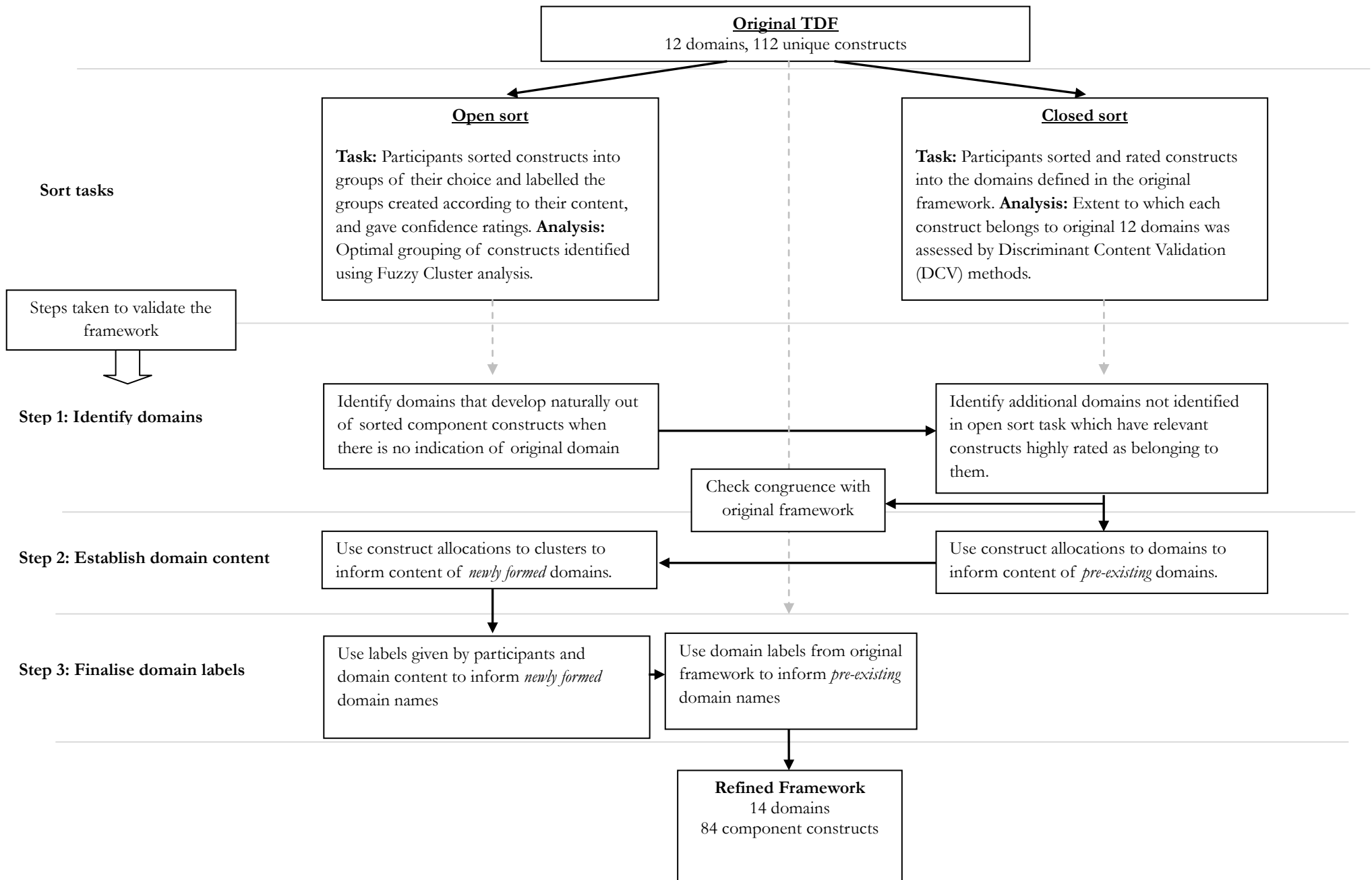


Figure 1

Mean silhouette width

0.15

0.20

0.25

5

10

15

Number of clusters

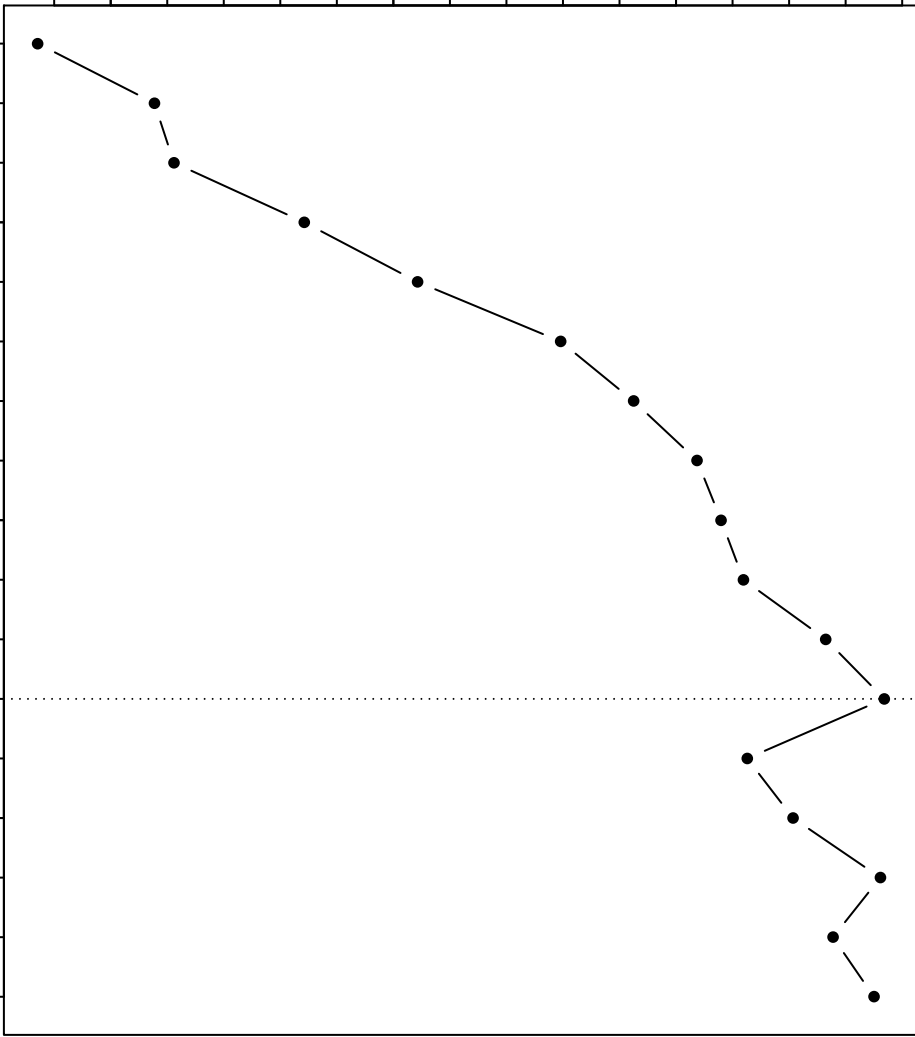


Figure 2

Additional files provided with this submission:

Additional file 1: 1065929942589982_add1.pdf, 934K

<http://www.implementationscience.com/imedia/7437383027049547/supp1.pdf>

Additional file 2: Additional File 2.pdf, 1034K

<http://www.implementationscience.com/imedia/2083969992684066/supp2.pdf>

Additional file 3: Additional File 3.pdf, 46K

<http://www.implementationscience.com/imedia/1219248056840667/supp3.pdf>

Additional file 4: 1065929942589982_add4.pdf, 180K

<http://www.implementationscience.com/imedia/1093747701713073/supp4.pdf>

Additional file 5: Additional File 5.pdf, 295K

<http://www.implementationscience.com/imedia/1112485054684066/supp5.pdf>